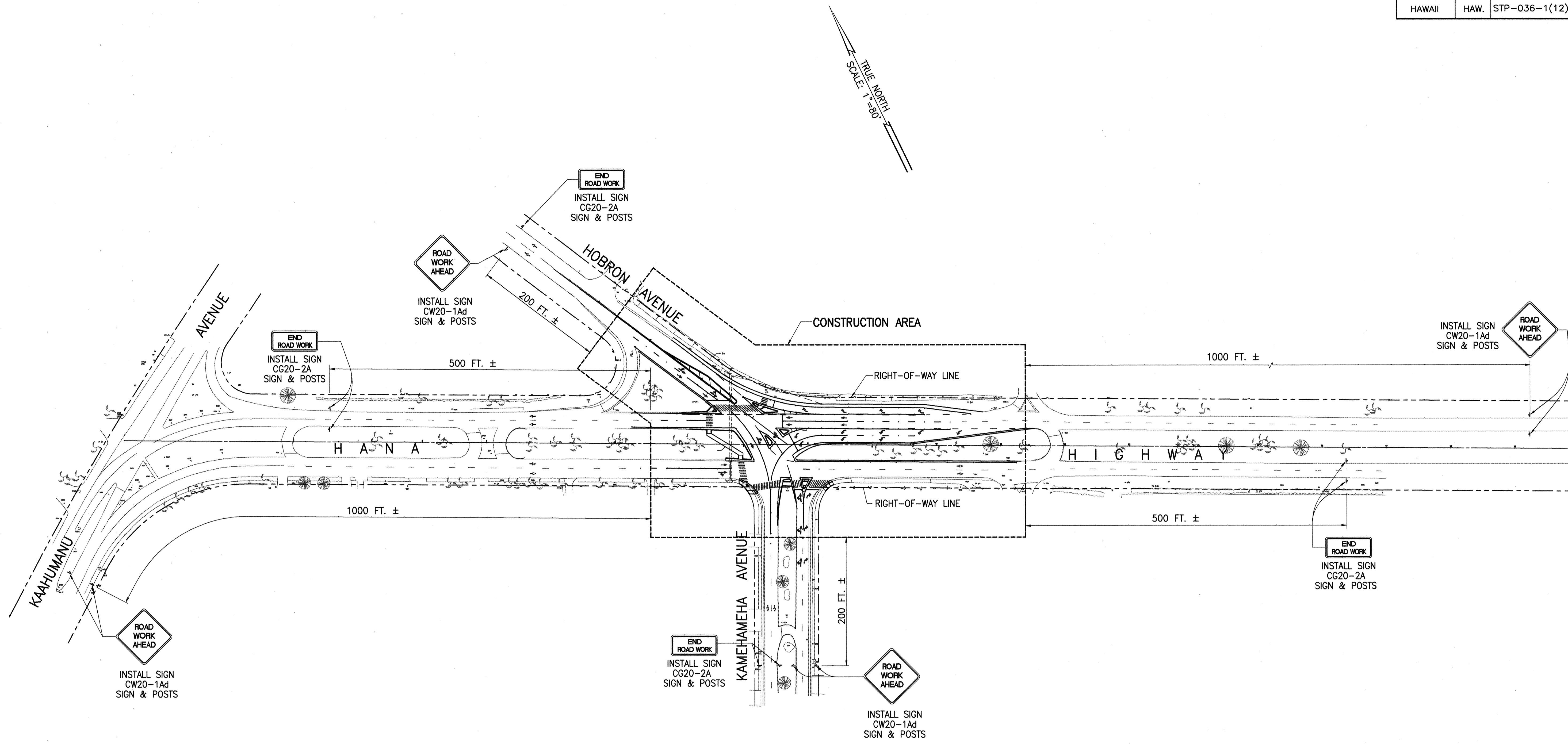


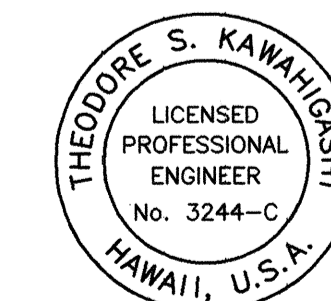
FED. ROAD DIST. NO.	STATE	FED. AID PROJ. NO.	FISCAL YEAR	SHEET NO.	TOTAL SHEETS
HAWAII	HAW.	STP-036-1(12)	2000	13	30



CONSTRUCTION WARNING SIGNING PLAN

SCALE: 1"=80'

NOTE:
CONSTRUCTION WARNING SIGNS AND POSTS
SHALL BE REMOVED AT END OF PROJECT.



THIS WORK WAS PREPARED BY ME
OR UNDER MY SUPERVISION
Theodore S. Kawahigashi
Signature

STATE OF HAWAII
DEPARTMENT OF TRANSPORTATION
HIGHWAYS DIVISION

CONSTRUCTION WARNING SIGNING PLAN

HANA HIGHWAY
INTERSECTION IMPROVEMENTS
AT HOBRON AVENUE
FAP NO. STP-036-1(12)

SCALE: AS NOTED DATE: MAR. 1999

SHEET No. 1 OF 1 SHEETS