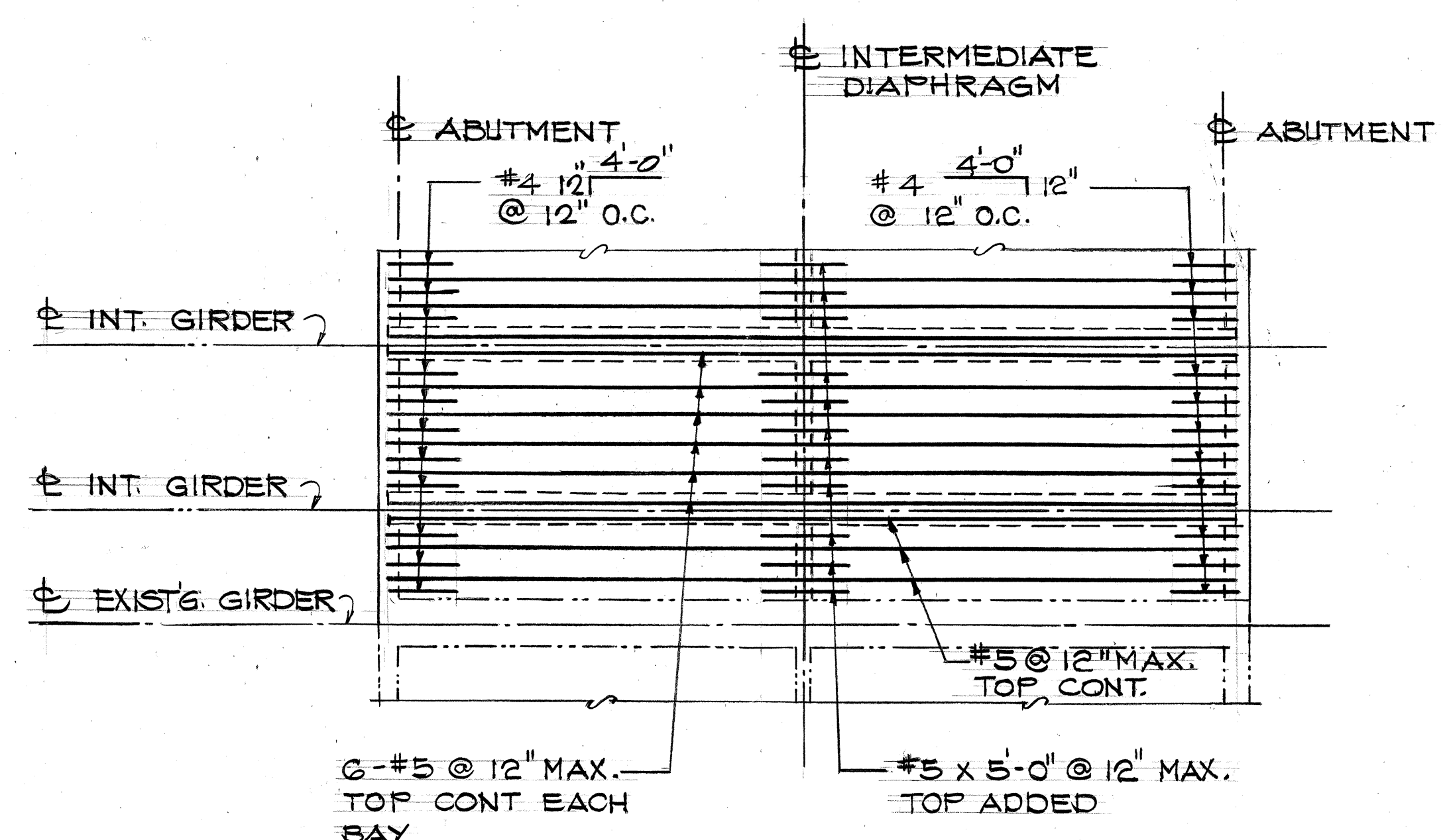


EXTERIOR SPAN

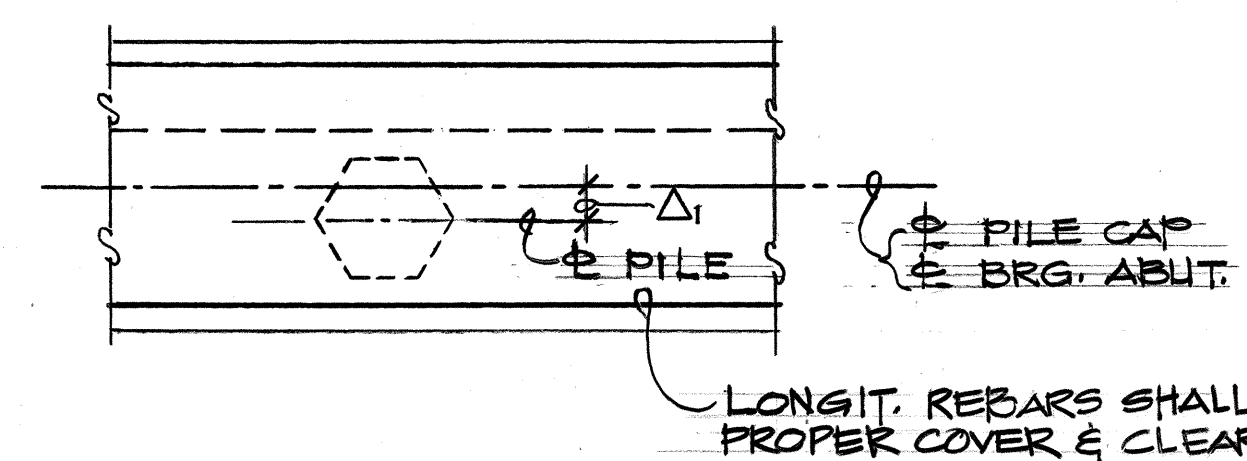


INTERIOR SPAN

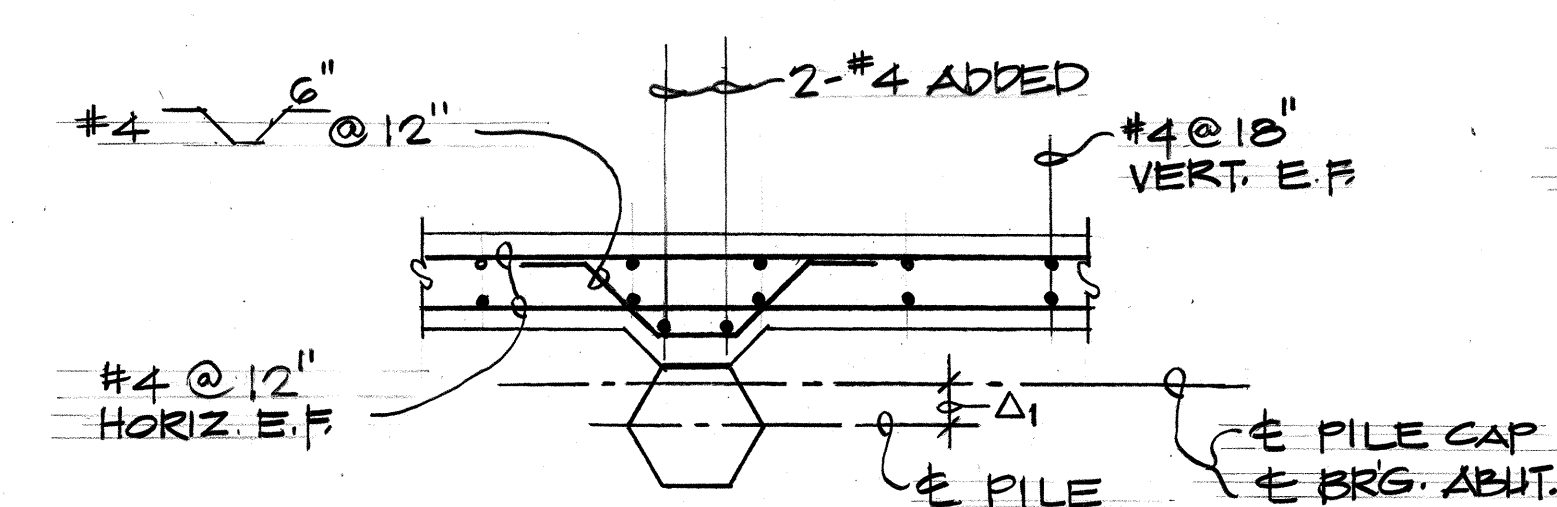
TYPICAL ARRANGEMENT OF TOP REINF.

SCALE: HORIZ. 1/4" = 1'-0"  
VERT. 1/8" = 1'-0"

NOTE:  
REINFORCEMENT NOT SHOWN  
FOR CLARITY

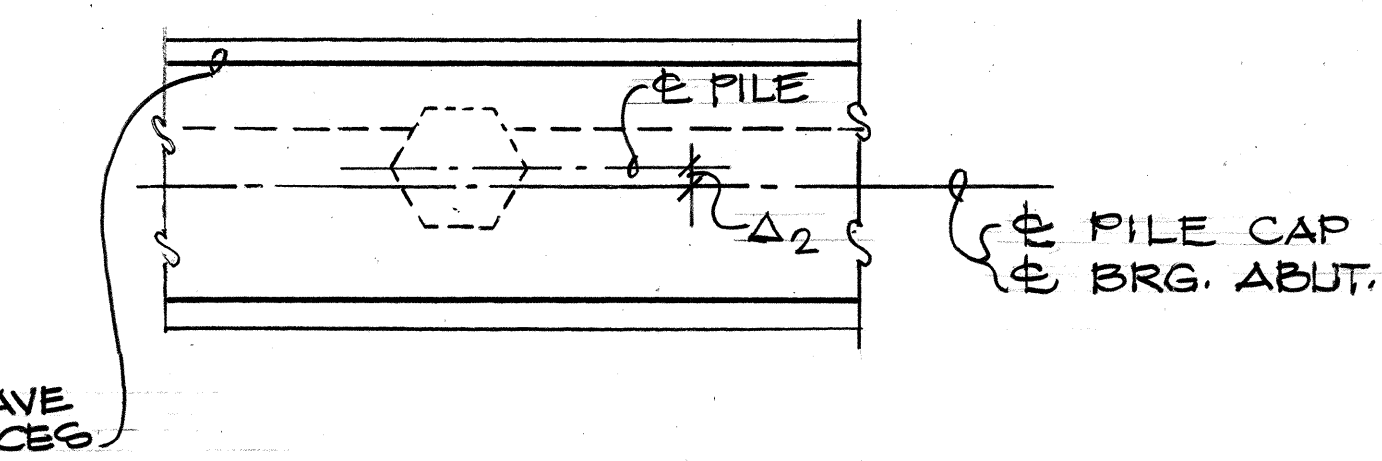


PLAN-SECTION THRU PILE CAP

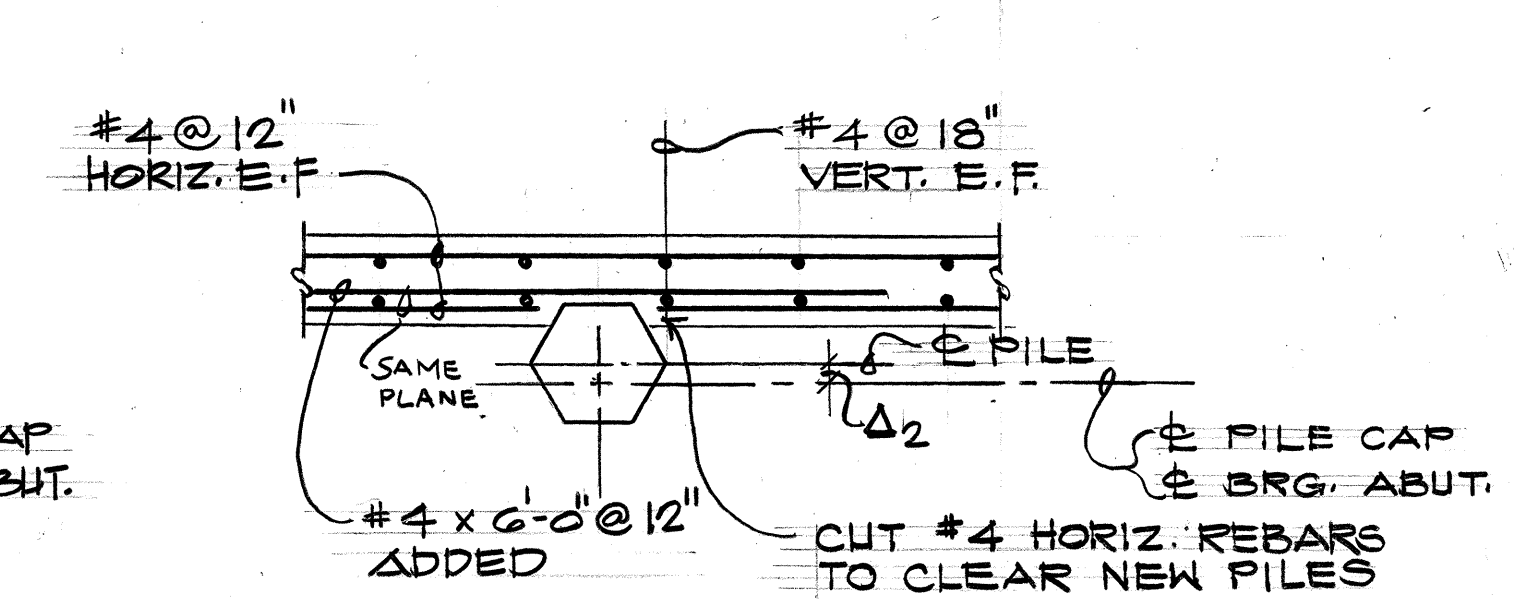


PLAN-SECTION THRU WALL

PILE PLACEMENT ERROR CONDITION ( $\Delta_1 = 5\frac{1}{2}"$  MAX.)  
AT ABUTMENT No. 1  
PILES NO. 6, 8, 9, 10



PLAN-SECTION THRU PILE CAP

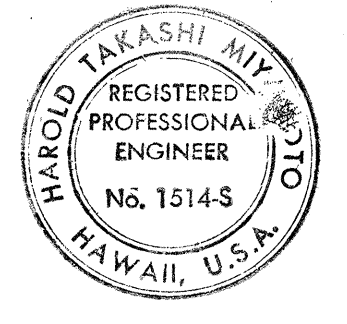


PLAN-SECTION THRU WALL

PILE PLACEMENT ERROR CONDITION ( $\Delta_2 = 2"$  MAX.)  
AT ABUTMENT No. 2  
PILES NO. 11, 12, 13, 14, 15



Airports Division  
DEPARTMENT OF TRANSPORTATION  
STATE OF HAWAII



THIS WORK WAS PREPARED BY A/E  
OR UNDER MY SUPERVISION  
*Harold Miyajima*

DSGN.	DRWN.	CHKD.	APPD.
L.S.	F.G.	Y.C.	HTM.

KEY PLAN / NOTES :

NO.	DATE	REVISIONS
RECORD DRAWINGS		
This record drawing has been prepared, in part, based upon information furnished by others. The Engineer is thus not responsible for the accuracy of this record drawing or for any errors or omissions which may have been incorporated into it as a result.		
Date: July 12, 1991		

PROJECT TITLE :

HANA HIGHWAY  
IMPROVEMENTS

PROJECT NO. :

STATE PROJ. NO. AM-1061-12  
AIP PROJ. NO. 3-15-0006-11

SHEET TITLE :

TYP. ARRANGEMENT  
OF TOP REINF.,  
PILE PLACEMENT  
AT ABUTMENT.

DATE :  
OCT. 18, 1990  
DWG. NO. :

5-10