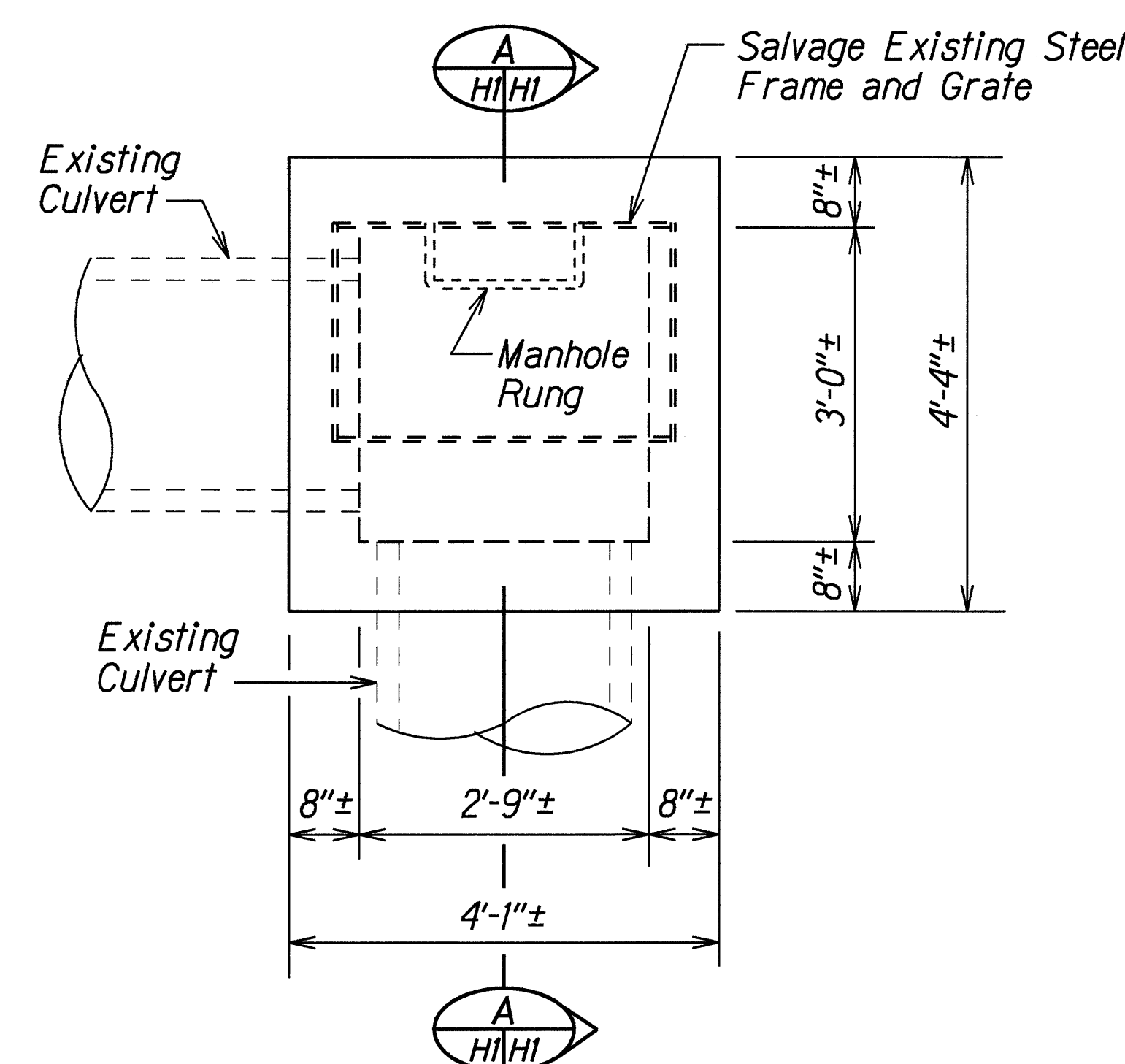


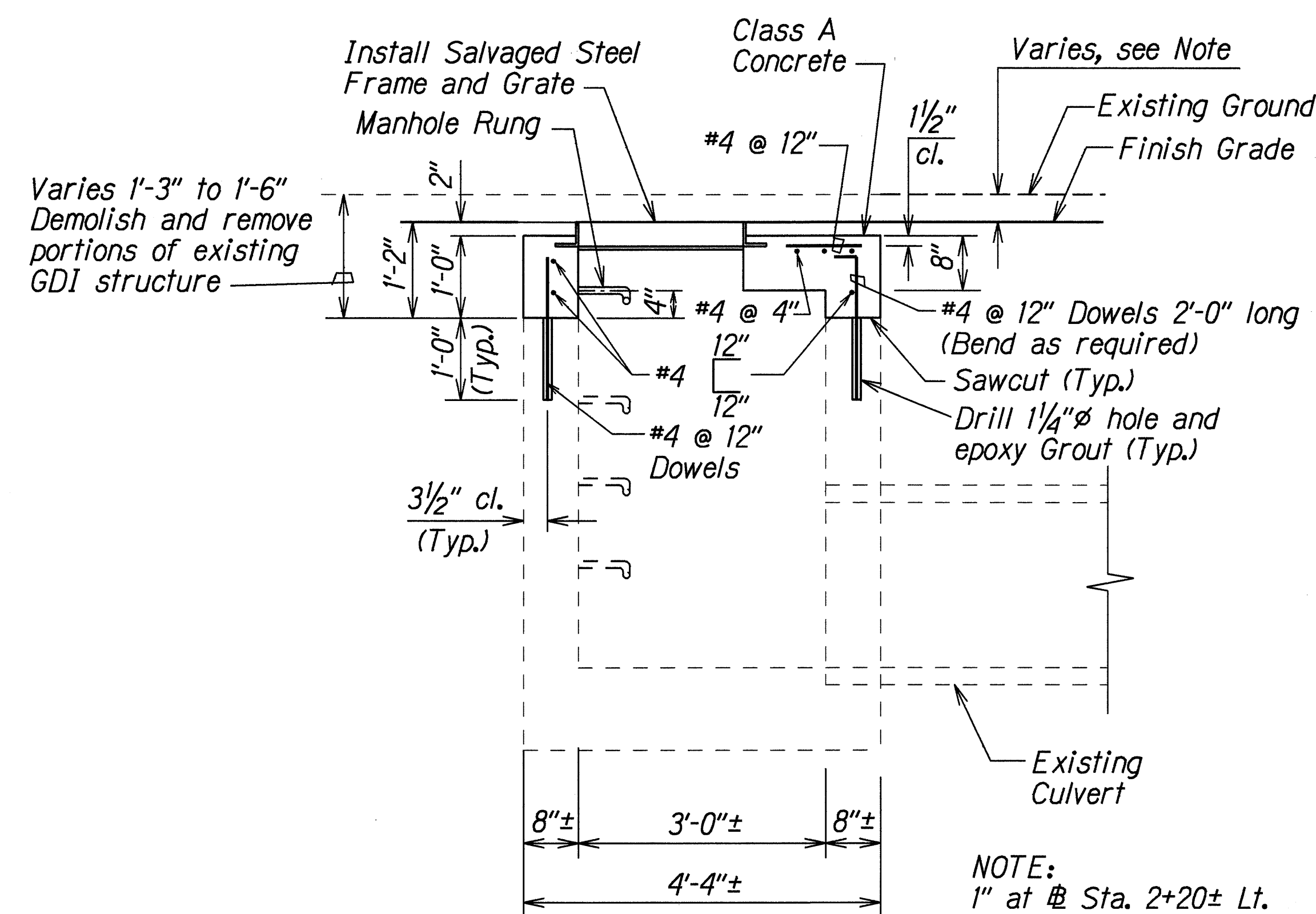
FED. ROAD DIST. NO.	STATE	PROJ. NO.	FISCAL YEAR	SHEET NO.	TOTAL SHEETS
HAWAII	HAW.	36AB-01-95M	1995	7	11

DRAINAGE NOTES:

1. The dimensions of the existing GDI's shown on the Plans are only an estimate. Contractors bidding on this project shall verify the dimensions and condition in the field at his own discretion prior to submitting a bid.
2. Existing drainage systems will be functional at all times during construction. The Contractor is to furnish materials, equipment, labor, tools and incidentals necessary to accomplish maintenance of flow. The cost shall be incidental to the various Contract Items.
3. The Contractor shall verify the locations of existing utilities in the field. Any existing utilities damaged during construction shall be repaired or replaced by the Contractor at his own expense.
4. Only non-pneumatic type of drill as approved by the Engineer will be permitted for drilling holes in concrete. Where indicated on Plans, the approximate diameter of drilled holes for installation of dowels shall be $1\frac{1}{4}$ ", and voids after installing dowels shall be filled with epoxy grout as directed by the Engineer.
5. The Engineer will not pay for excavating and backfilling; demolishing and removing portions of existing GDI structure; installing reinforcing steel and manhole rung; placing concrete; and reinstalling existing frame and grate separately. The Engineer will pay for the work per each under Item No. 604.4231-Adjust GDI Frame and Grate.



PLAN



SECTION A

TYPICAL DETAILS OF GRATED DROP INLET RECONSTRUCTION

NOTE:
1" at Sta. 2+20± Lt.
2" at Sta. 2+90± Rt.
4" at Sta. 3+62± Lt./Rt.

STATE OF HAWAII
DEPARTMENT OF TRANSPORTATION
HIGHWAYS DIVISION

DRAINAGE DETAILS

HANA HIGHWAY RESURFACING

Paia Town Section

Project No. 36AB-01-95M

Scale: $\frac{3}{4}$ "=1'-0"

Date: May 1995

SHEET No. HI OF 1 SHEETS