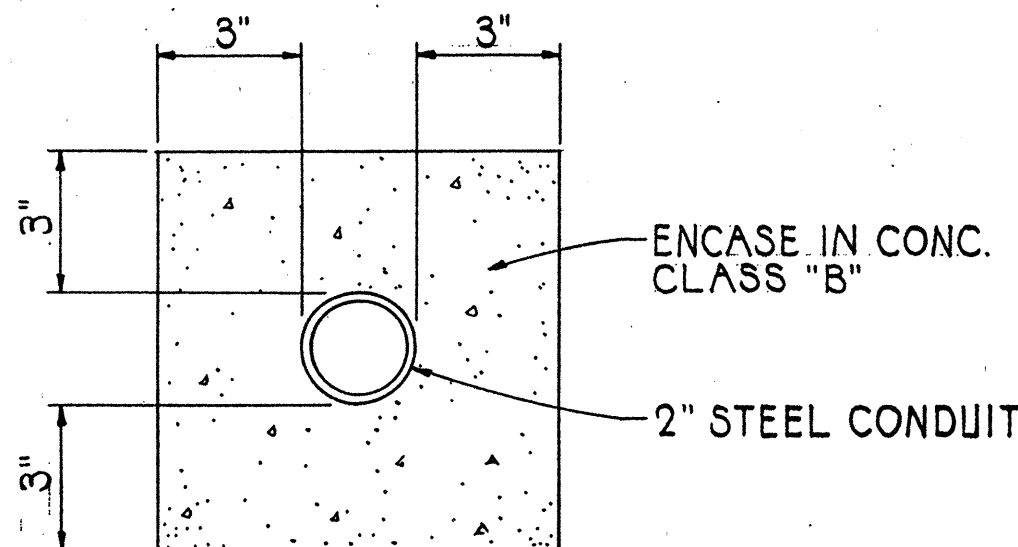


FED. ROAD DIST. NO.	STATE	PROJ. NO.	FISCAL YEAR	SHEET NO.	TOTAL SHEETS
HAWAII	HAW.	36A-01-90	1990	3	5

### LEGEND

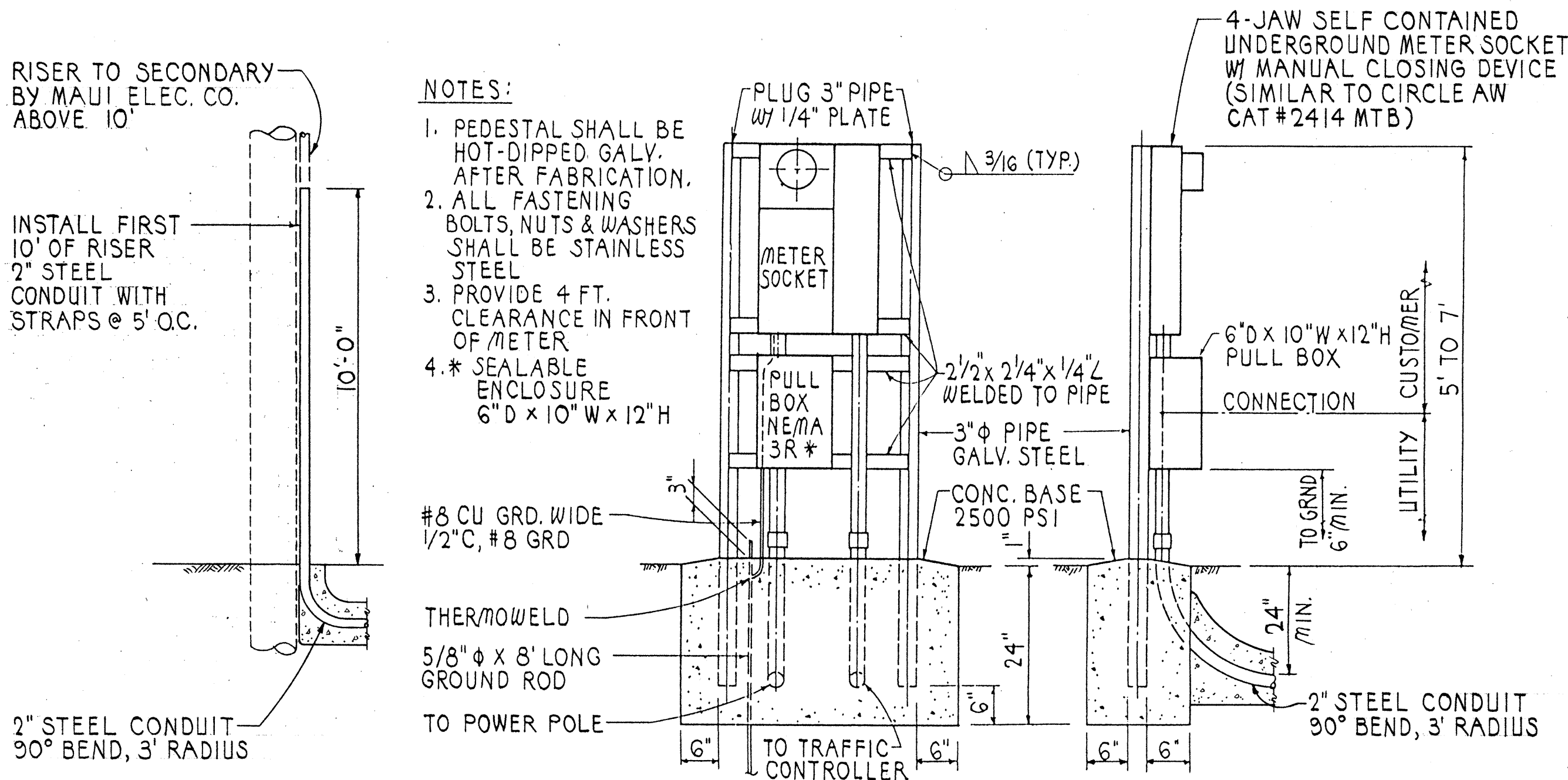
- TRAFFIC SIGNAL HEADS MOUNTED ON TYPE II SIGNAL STANDARD, ARM SPREAD SHOWN IS 28' AND DISTANCE BETWEEN SIGNAL HEADS SHOWN IS 10'
- 12" RYG STANDARD TRAFFIC SIGNAL HEAD
- STANDARD TRAFFIC AND PEDESTRIAN SIGNAL HEADS MOUNTED ON TYPE I SIGNAL STANDARD, HEIGHT = 10'
- 12" RYG 4-SECTION DUAL INDICATION TRAFFIC SIGNAL HEAD
- CONTROLLER
- TYPE "A" PULLBOX
- TYPE "B" PULLBOX
- TYPE "B" PULLBOX WITH MODIFIED COVER
- LOOP DETECTOR, SERIES-PARALLEL CONNECTED
- LOOP DETECTOR, SERIES CONNECTED
- PP POWER POLE
- WV WATER VALVE
- SMH SEWER MANHOLE
- EXISTING STRIPING
- EXISTING PAVEMENT MARKING TO BE REMOVED
- NEW STRIPING
- NEW PAVEMENT ARROW
- NEW CROSSWALK MARKINGS
- ONLY NEW PAVEMENT WORD
- WG EXISTING UTILITY LINES AS SHOWN
- W = WATER  
D = DRAIN  
S = SEWER



**MECO CONDUIT DETAIL**  
NOT TO SCALE

### CONSTRUCTION NOTES

- LOCATIONS OF EXISTING UNDERGROUND STRUCTURES AND UTILITIES, SUCH AS PIPELINES, CONDUITS, CABLES, ETC., SHOWN ON PLANS ARE APPROXIMATE ONLY. IT IS NOT THE INTENT OF THESE PLANS TO SHOW THE EXACT LOCATION OF ALL UNDERGROUND UTILITIES AND STRUCTURES. IT IS THE RESPONSIBILITY OF THE CONTRACTOR TO VERIFY THE LOCATIONS OF ALL EXISTING UTILITIES WITH THE RESPECTIVE OWNERS. EXISTING UTILITIES DAMAGED BY THE CONTRACTOR SHALL BE REPAIRED BY THE CONTRACTOR AT HIS OWN COST.
- THE LOCATIONS OF THE TRAFFIC SIGNAL STANDARDS, TRAFFIC SIGNAL STANDARDS WITH MAST-ARM, PEDESTRIAN PUSH BUTTONS, TRAFFIC CONTROLLERS, PULLBOXES, CONDUITS AND LOOP DETECTORS SHALL BE STAKED OUT IN THE FIELD BY THE CONTRACTOR AND APPROVAL OF THE LOCATIONS SHALL BE OBTAINED FROM THE ENGINEER PRIOR TO CONSTRUCTION AND INSTALLATION.
- ALL TRAFFIC SIGNAL WORK SHALL CONFORM TO THE REQUIREMENTS OF THE "MANUAL ON UNIFORM TRAFFIC CONTROL DEVICES FOR STREETS AND HIGHWAYS", FEDERAL HIGHWAY ADMINISTRATION (1988) AND AMENDMENTS.
- LOCATIONS OF PAVEMENT STRIPING, MARKERS, AND MARKINGS (PAVEMENT ARROWS, STOP LINES, CROSSWALK, ETC.) SHOWN ON THE PLANS SHALL BE VERIFIED WITH THE ENGINEER PRIOR TO THE INSTALLATION OF THE TRAFFIC SIGNAL SYSTEM.
- MAINTENANCE OF TRAFFIC THROUGH THE CONSTRUCTION AREA SHALL BE IN ACCORDANCE WITH PART VI OF THE "MANUAL ON UNIFORM TRAFFIC CONTROL DEVICES FOR STREETS AND HIGHWAYS", FEDERAL HIGHWAY ADMINISTRATION (1988) AND AS SPECIFIED IN THE SPECIAL PROVISIONS. THE CONTRACTOR SHALL FURNISH AND MAINTAIN ADEQUATE BARRICADES, BLINKERS, CONSTRUCTION SIGNS, ETC. FOR THE SAFETY OF THE MOTORING PUBLIC.



### NOTES

- MAUI ELECTRIC CO. SHALL FURNISH AND INSTALL CABLE BETWEEN SECONDARY AND METER SOCKET.
- CONTRACTOR SHALL MAKE ALL ELECTRICAL CONNECTIONS TO CONTROLLER, PROVIDE BREAKER, GROUND AND CONCRETE-ENCASED 2" STEEL CONDUIT.
- CONTRACTOR SHALL PROVIDE MAUI ELECTRIC CO. ONE WEEK ADVANCE NOTICE FOR ANY WORK BY MAUI ELECTRIC CO.

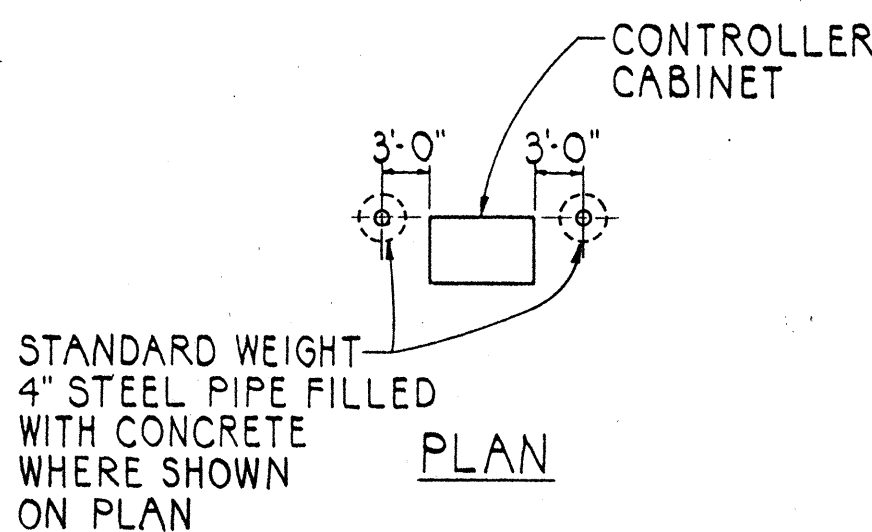
**ELECTRICAL SERVICE DETAIL**  
NOT TO SCALE

### TRAFFIC SIGNAL NOTES

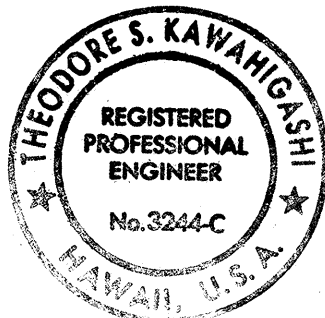
- ALL TRAFFIC SIGNAL CONTROLLER EQUIPMENT SHALL BE COMPLETELY WIRED IN THE CABINET AND SHALL CONTROL THE TRAFFIC SIGNALS AS CALLED FOR ON THE PLANS.
- SIGNAL INDICATIONS DURING CLEARANCE INTERVAL:
  - IF A SIGNAL IS G OR +G AND WILL REMAIN G OR +G DURING THE NEXT PHASE, IT SHALL BE G OR +G DURING THE CLEARANCE INTERVAL.
  - IF A SIGNAL IS G OR +G AND WILL BECOME R OR EXTINGUISHED DURING THE NEXT PHASE, IT SHALL BE Y OR +Y DURING THE CLEARANCE INTERVAL.
  - IF A SIGNAL IS R AND WILL REMAIN R OR BECOMES G DURING THE NEXT PHASE, IT SHALL REMAIN R DURING THE CLEARANCE INTERVAL.
- THE LOOP AMPLIFIER UNITS FURNISHED FOR THIS PROJECT SHALL BE CAPABLE OF OPERATING THE LOOP DETECTOR CONFIGURATIONS SHOWN ON THE PLANS.
- DETECTOR ASSIGNMENT SHALL BE PER CALIFORNIA DEPARTMENT OF TRANSPORTATION "TRAFFIC SIGNAL CONTROL LOCAL INTERSECTION PROGRAM", JULY, 1978.
- CONTRACTOR SHALL FURNISH 50-AMP. CIRCUIT BREAKERS.
- A SOLID #8 BARE COPPER WIRE SHALL BE PULLED WITH THE TRAFFIC CONTROL CABLE FOR EQUIPMENT GROUND. COST SHALL BE INCIDENTAL TO THE INSTALLATION OF THE CONTROL CABLE.
- SHOULD ANY DEFECT BE ENCOUNTERED DURING THE WARRANTY PERIOD, THE MANUFACTURER WILL BE NOTIFIED AND HE SHALL PROMPTLY CORRECT SUCH DEFECT. SERVICE CALL (BY FACTORY QUALIFIED REPRESENTATIVE) DURING THE WARRANTY PERIOD FOR REPAIRS OR OTHER MAINTENANCE SHALL BE ANSWERED WITHIN 24 HOURS AND SHALL BE DONE AT NO EXPENSE WHATSOEVER TO THE STATE. ALL REPAIRS SHALL BE DONE AS SOON AS POSSIBLE.

### NOTE:

COST OF CONC. FILLED GALVANIZED POSTS SHALL BE INCIDENTAL TO OTHER ITEMS OF WORK.



**PIPE GUARD DETAIL**  
NOT TO SCALE



THIS WORK WAS PREPARED BY ME  
OR UNDER MY SUPERVISION

*Theodore S. Kawahigashi*

STATE OF HAWAII  
DEPARTMENT OF TRANSPORTATION  
HIGHWAYS DIVISION

### LEGEND AND NOTES

HANA HIGHWAY  
TRAFFIC SIGNALS AT  
BALDWIN AVENUE  
PROJECT NO. 36A-01-90

SCALE: AS NOTED DATE: FEB. 8, 1991  
SHEET No. 1 OF 1 SHEETS