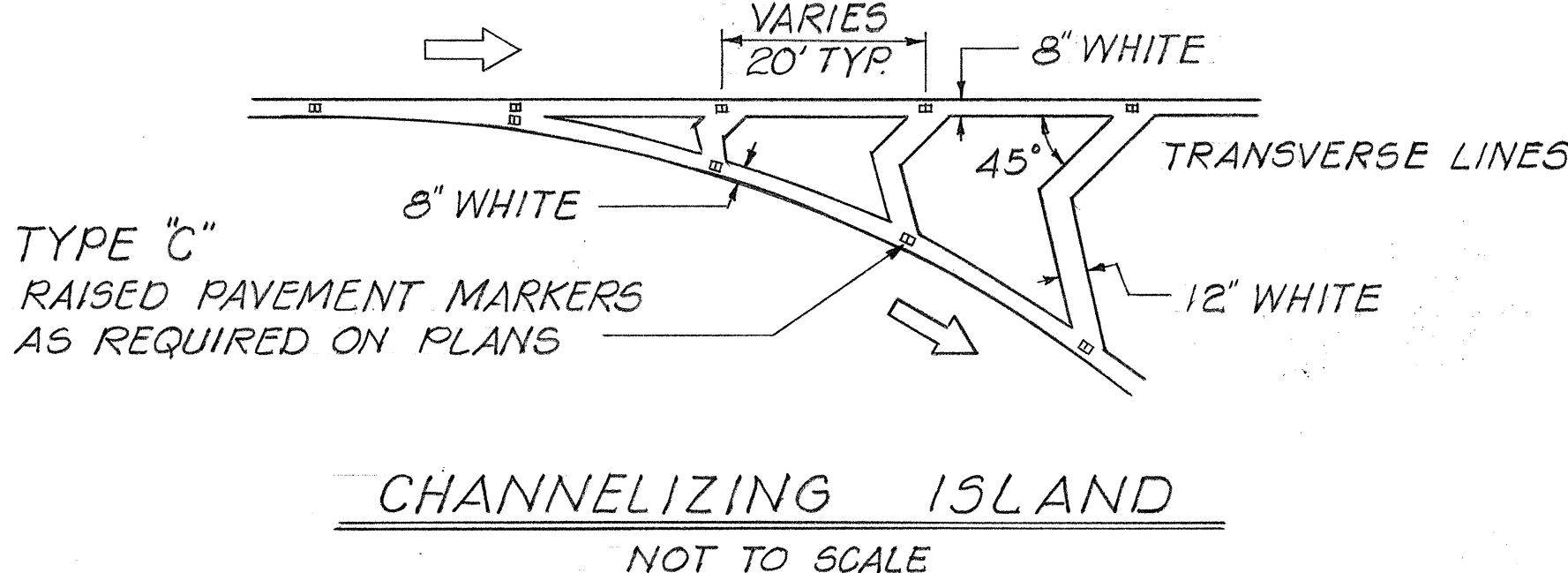
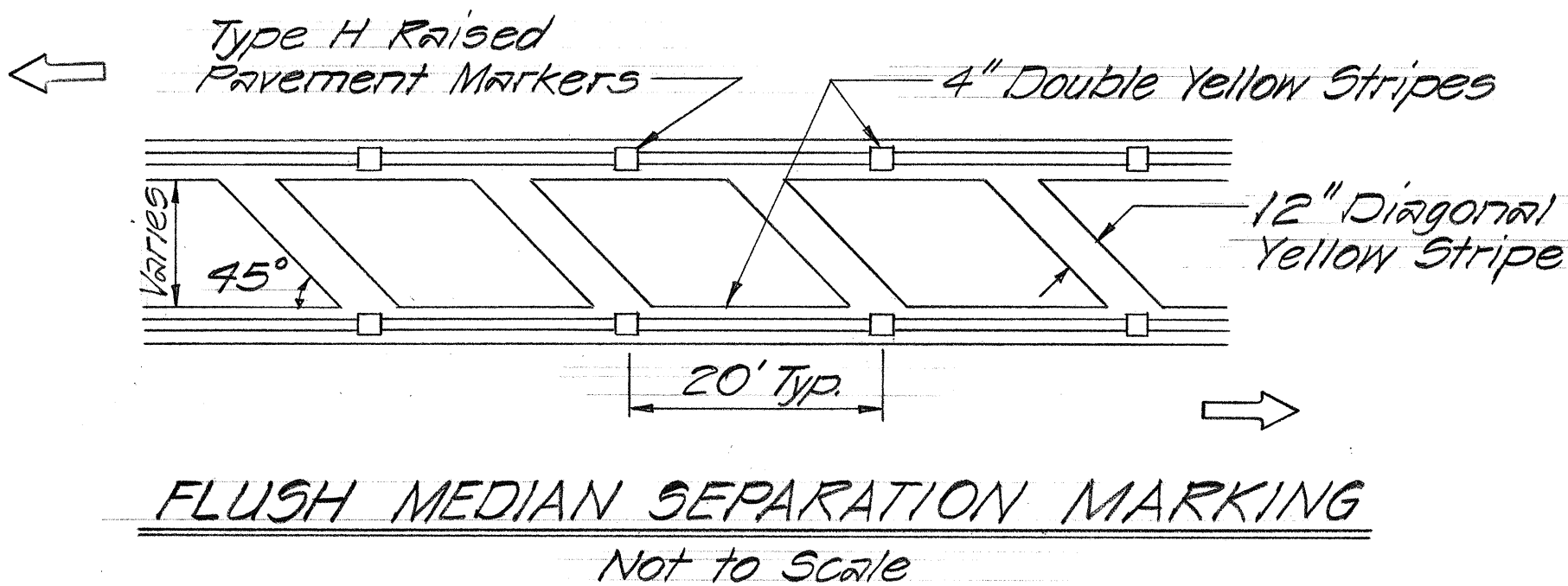
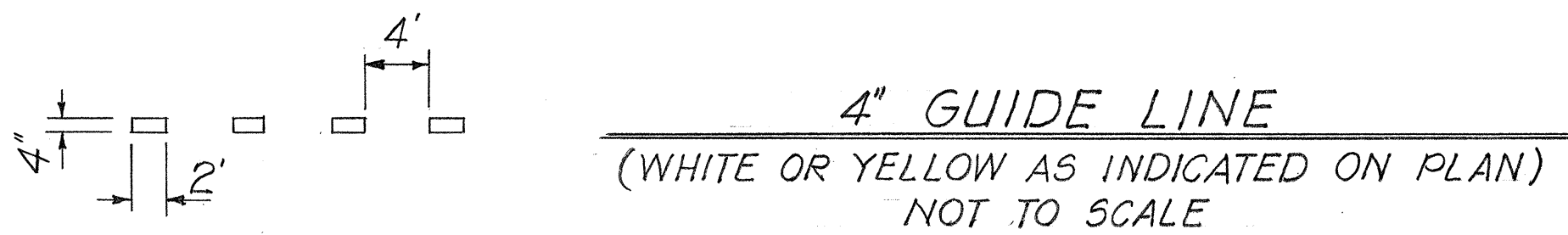


FED. ROAD DIST. NO.	STATE	PROJ. NO.	FISCAL YEAR	SHEET NO.	TOTAL SHEETS
HAWAII	HAW.	HWY-M-02-76M	1976	4	5

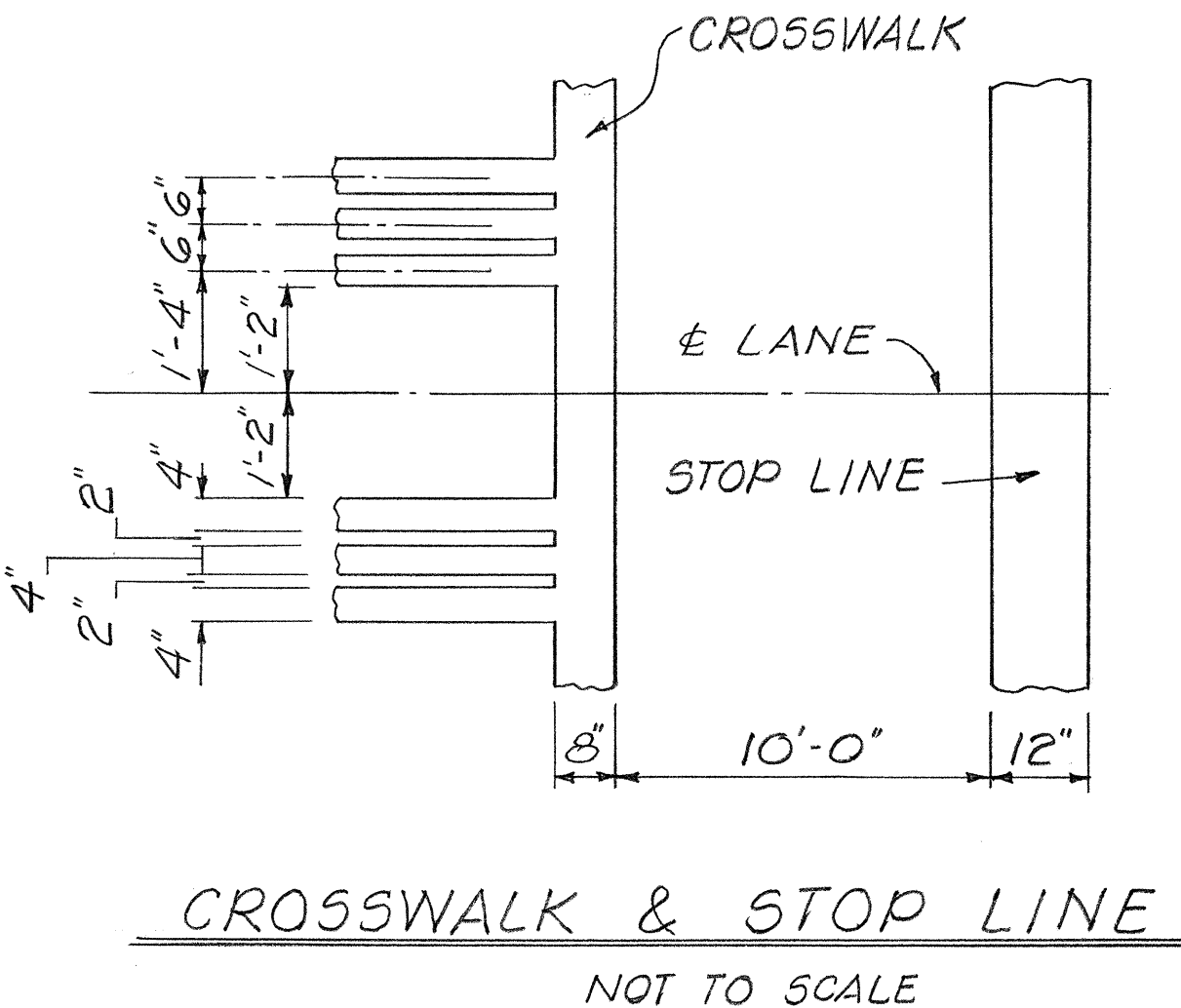
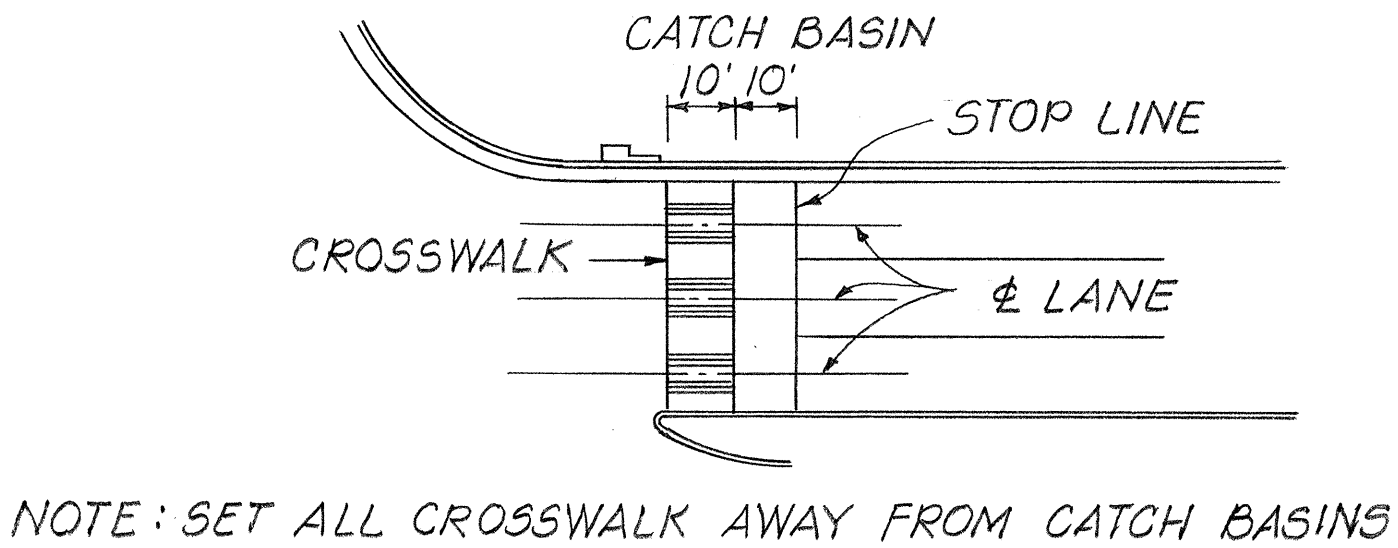
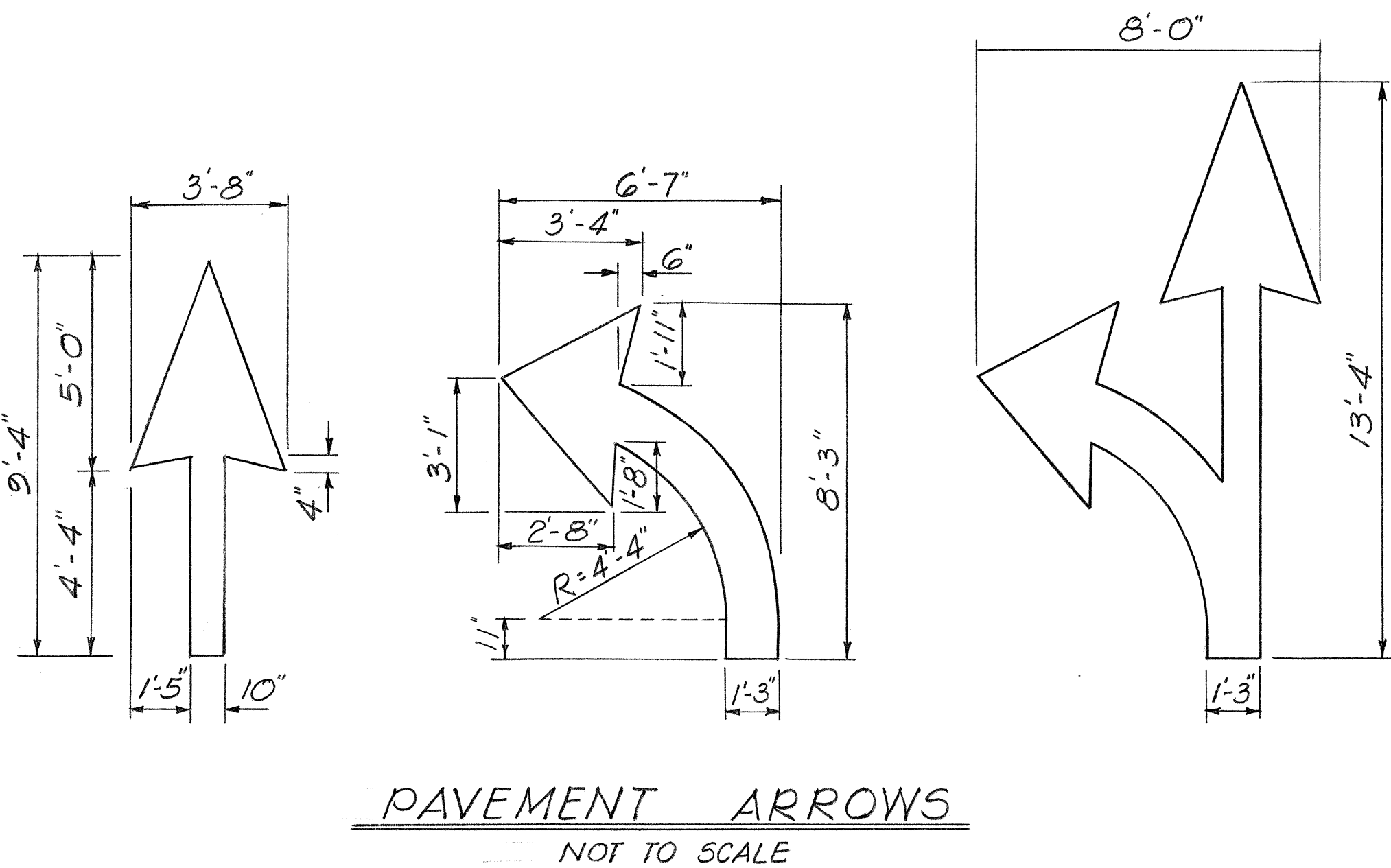


### GENERAL NOTES - PAVEMENT MARKINGS

- Pavement Markings shall conform to the Manual on Uniform Traffic Control Devices for Streets and Highways, 1971, and as shown on the plans.
- Layout of pavement markings and striping shall be done by the State. Contractor shall check layout of markers and striping with the Engineer prior to performing work.
- For additional pavement marking details see plan sht. #DT 300

STATE OF HAWAII  
DEPARTMENT OF TRANSPORTATION  
HIGHWAYS DIVISION

TYPICAL DETAILS OF  
PAVEMENT MARKINGS  
31A - KIHAI ROAD  
36A - HANA HIGHWAY  
PROJ. NO HWY-M-02-76M  
SCALE: AS NOTED  
MAR. 1976  
SHEET NO. 1 OF 1 SHEETS



SUMMARY OF PAVEMENT MARKING & STRIPING			
PAVEMENT DELINEATOR	QUANTITY		
	EACH	LANE	LINEAR FOOT
TYPE "A" RAISED PAVEMENT MARKER	—		
TYPE "C" RAISED PAVEMENT MARKER	—		
TYPE "D" RAISED PAVEMENT MARKER	417		
TYPE "H" RAISED PAVEMENT MARKER	65		
TYPE "J" RAISED PAVEMENT MARKER	2,124		
PAVEMENT STRIPING			34,930
CROSSWALK MARKING	—		
PAVEMENT ARROWS	—		

ORIGINAL PLAN	DATE
SURVEY PLOTTED BY	"
DRAWN BY	"
DESIGNED BY	"
NOTED BY	"
CHECKED BY	"
NO.	