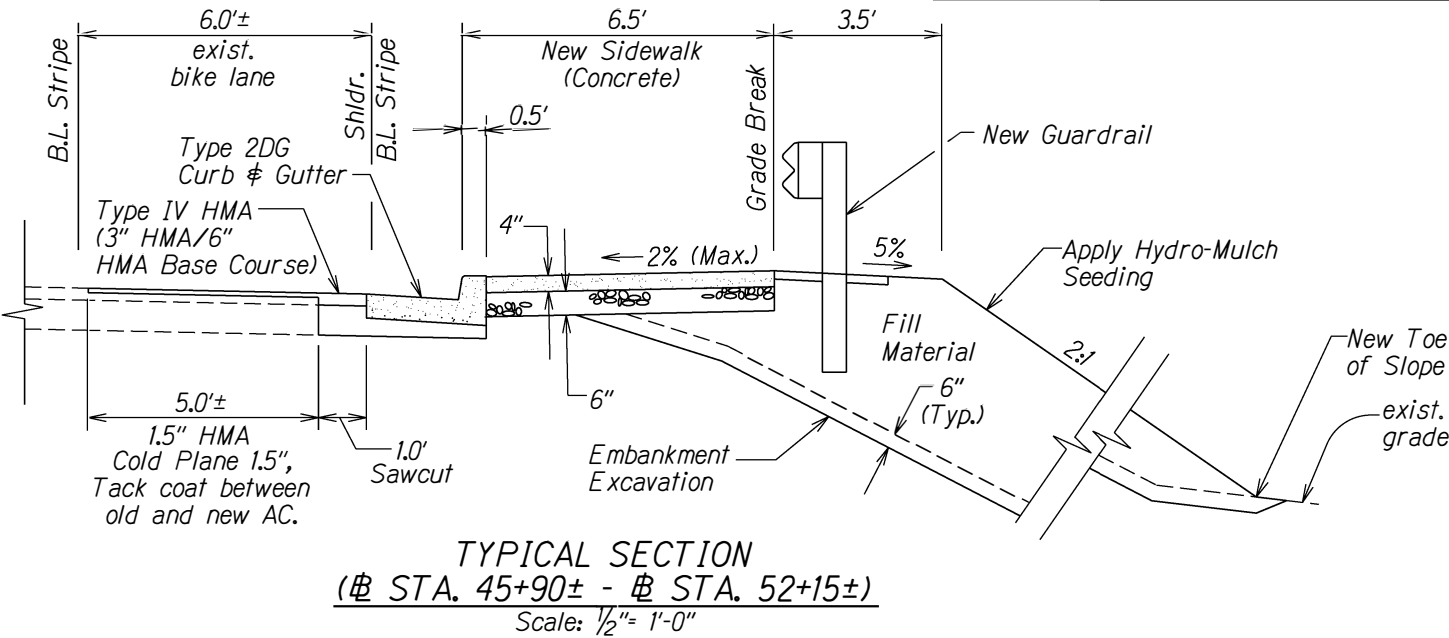
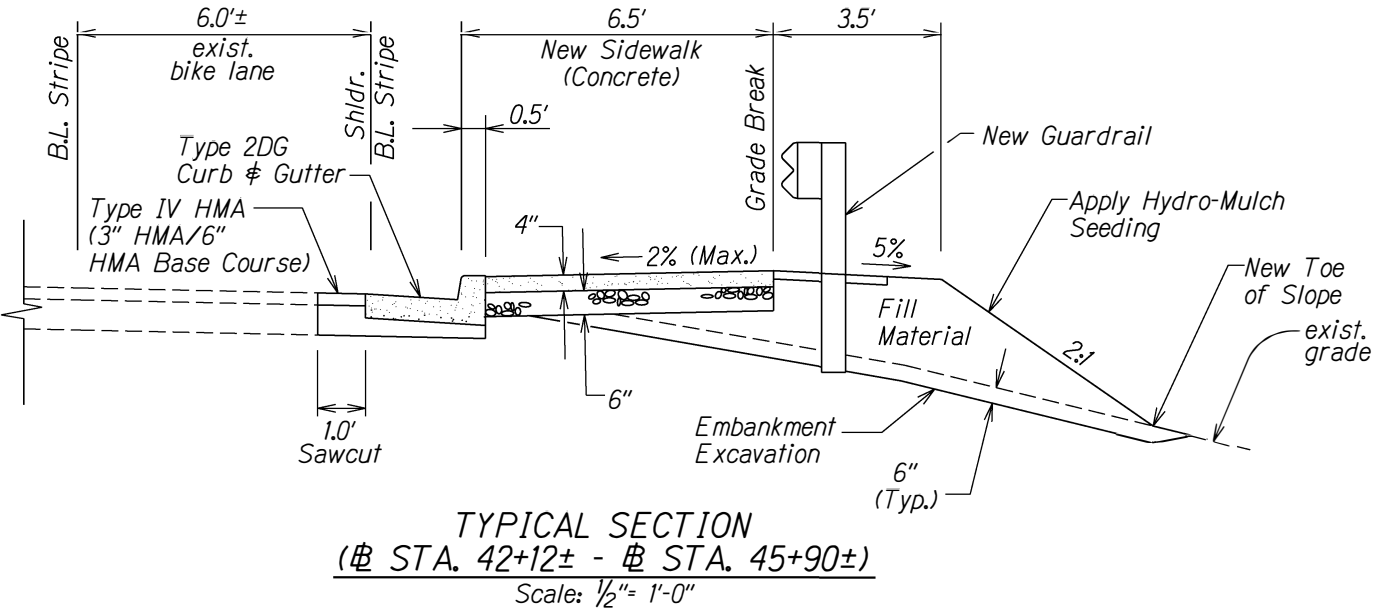
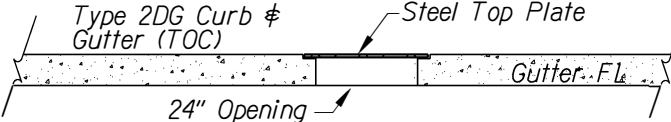
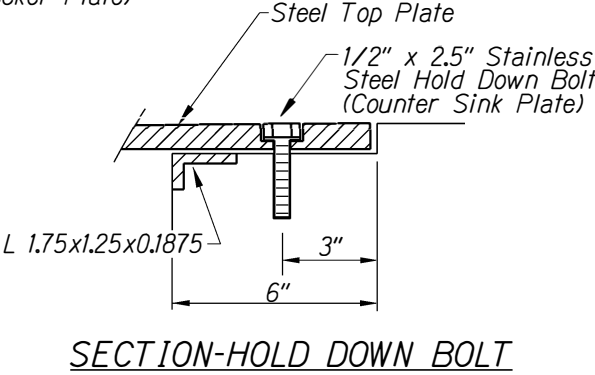
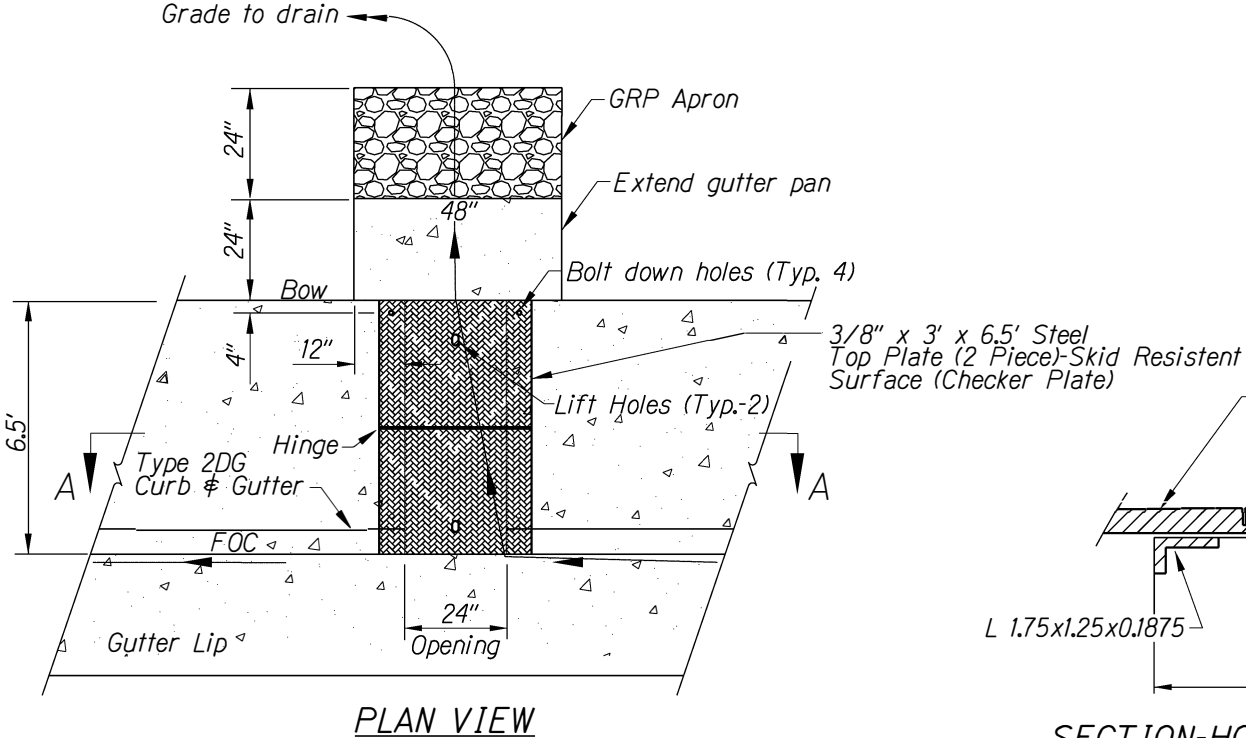


FED. ROAD DIST. NO.	STATE	FED. AID PROJ. NO.	FISCAL YEAR	SHEET NO.	TOTAL SHEETS
HAWAII	HAW.	NH-032-1(011)	2025	12	19



SIDEWALK NOTES

1. A 2% maximum cross slope shall be maintained in the direction of pedestrian traffic.
2. Sidewalks shall be constructed to eliminate ponding to the maximum extent feasible.
3. Construction joints are required to join new and existing sidewalks per State Standard Plan D-15.
4. Surface of sidewalks shall be firm, stable, and slip-resistant. This includes the surfaces of pullboxes, valve covers, manhole covers, etc.
5. Bed course material is required for curb ramps, sidewalks, and gutters.
6. Depth of Type 2DG Curb & Gutter shall be 10 inches (Min). 6 inch Gutter over 4 inch Base Course. Refer to State Standard Plan D-05.
7. All sidewalks shall provide a minimum clear width of 3'-0" (excluding curb) for pedestrian circulation. If this cannot be met, a minimum 32-inch clear width is allowed for a distance of 24-inches.
8. Passing spaces along new sidewalks with 5' clear width or less shall be provided at maximum 200' intervals as required by ADA guidelines. The passing area shall be a minimum 5' wide by 5' long as feasible.
9. Fill material shall be Import Borrow. Each horizontal layer shall be keyed into the existing slope. Fill shall be compacted to a minimum of 90 percent relative compaction.



DETAIL - CURB OPENING DRAIN (# STA. 45+50±)
Not to Scale

STATE OF HAWAII
DEPARTMENT OF TRANSPORTATION
HIGHWAYS DIVISION

TYPICAL SECTIONS & DETAILS

KAAHUMANU AVENUE SIDEWALK GAP
Maui Lani Parkway to Mahalani Street
Federal-Aid Project No. NH-032-1(011)

Scale: As Shown Date: November, 2023

SHEET No. 1 OF 1 SHEETS