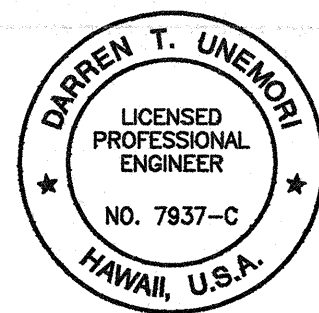
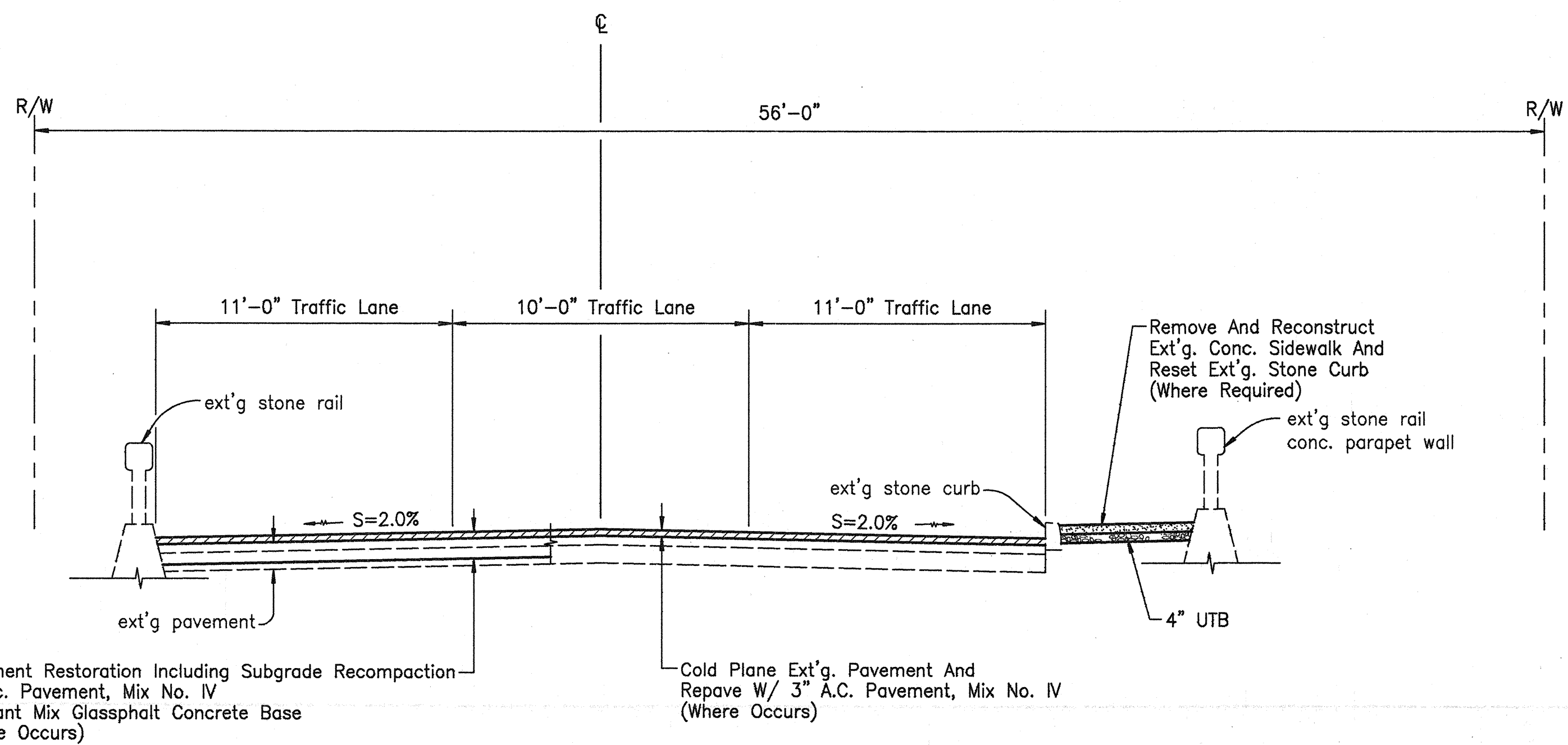
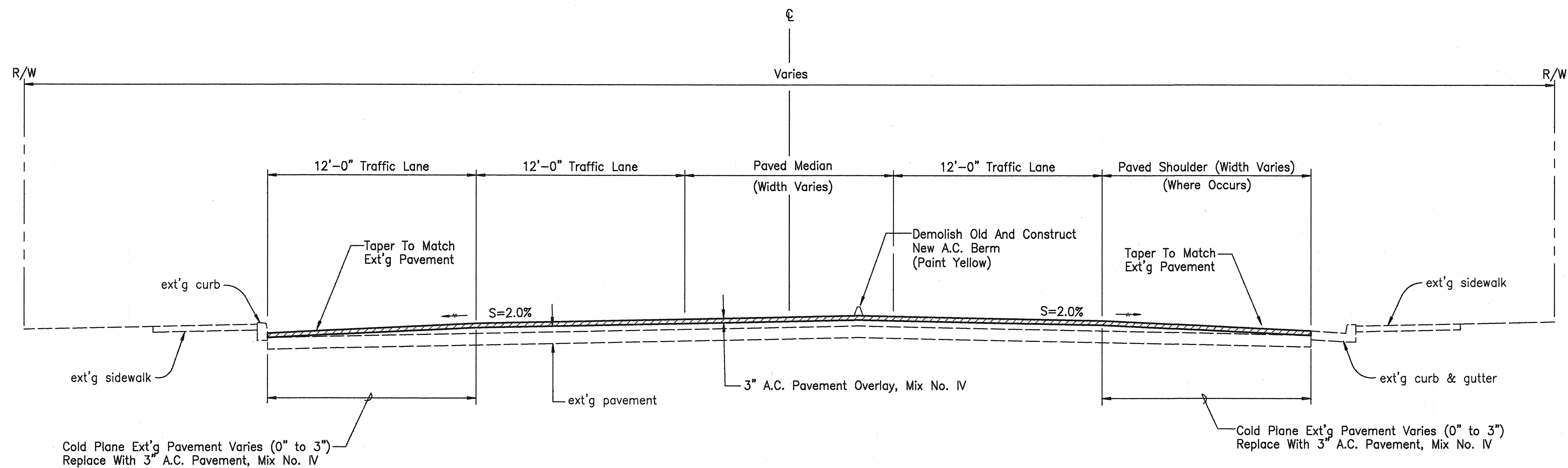


FED. ROAD DIST. NO.	STATE	FED. AID PROJ. NO.	FISCAL YEAR	SHEET NO.	TOTAL SHEETS
HAWAII	HAW.	NH-032-1(8)	2000	5	111



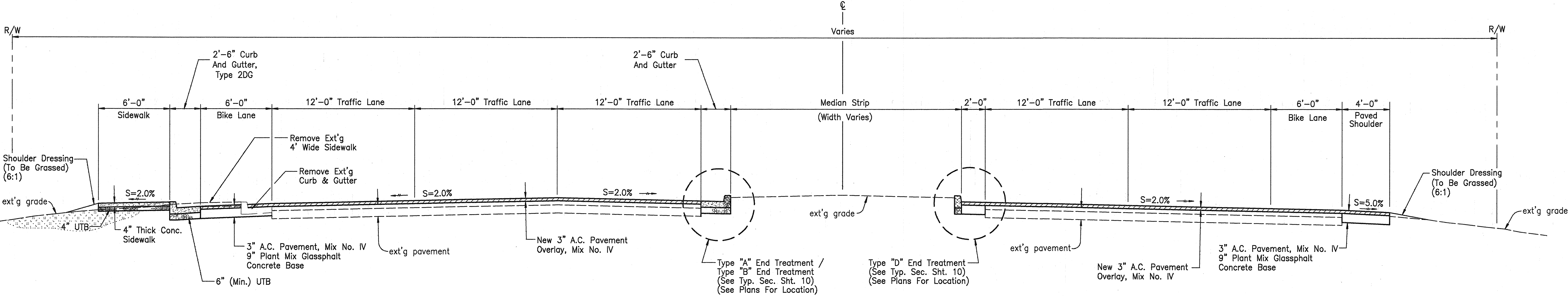
THIS WORK WAS PREPARED BY ME  
OR UNDER MY SUPERVISION  
Signature 4/18/00

STATE OF HAWAII  
DEPARTMENT OF TRANSPORTATION  
HIGHWAYS DIVISION  
**TYPICAL ROAD SECTIONS**  
MAIN STREET RESURFACING  
CENTRAL AVENUE TO KAAHUMANU AVENUE  
AND  
KAAHUMANU AVENUE RESURFACING  
MAIN STREET TO HOBSON AVENUE  
Fed. Aid Project No. NH-032-1(8)

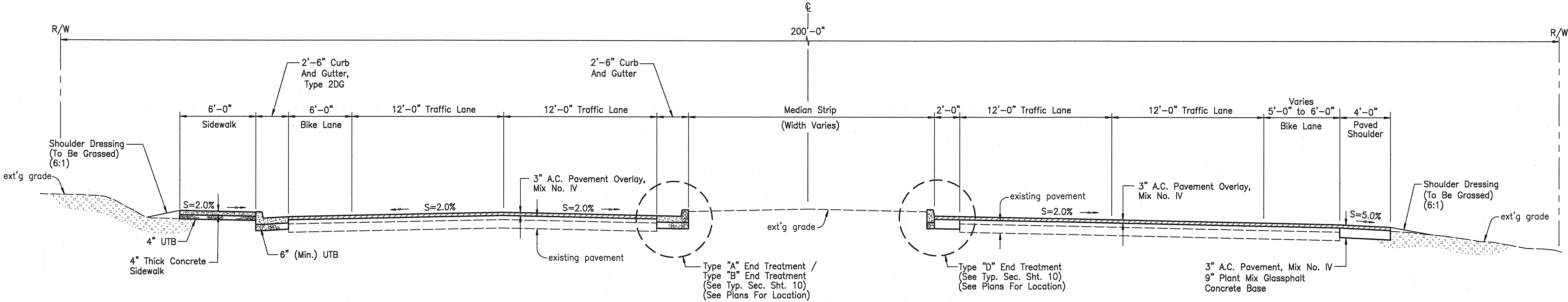
SCALE: AS NOTED

SHEET No. 1 OF 7 SHEETS

FED. ROAD DIST. NO.	STATE	FED. AID PROJ. NO.	FISCAL YEAR	SHEET NO.	TOTAL SHEETS
HAWAII	HAW.	NH-032-1(8)	2000	6	111

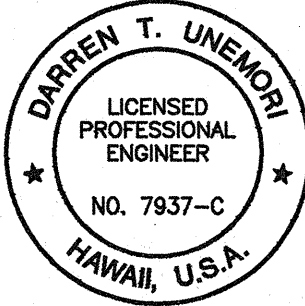


**TYPICAL SECTION – NANIHOA DRIVE TO LUNALILO STREET**  
 SCALE: 1/4 IN. = 1 FT.



**TYPICAL SECTION – LUNALILO STREET TO MAUI LANI PARKWAY**  
 SCALE: 1/4 IN. = 1 FT.

DATE	DATE	DATE	DATE	DATE
DESIGNED BY	DESIGNED BY	DESIGNED BY	DESIGNED BY	DESIGNED BY
CHECKED BY	CHECKED BY	CHECKED BY	CHECKED BY	CHECKED BY
NO.	NO.	NO.	NO.	NO.

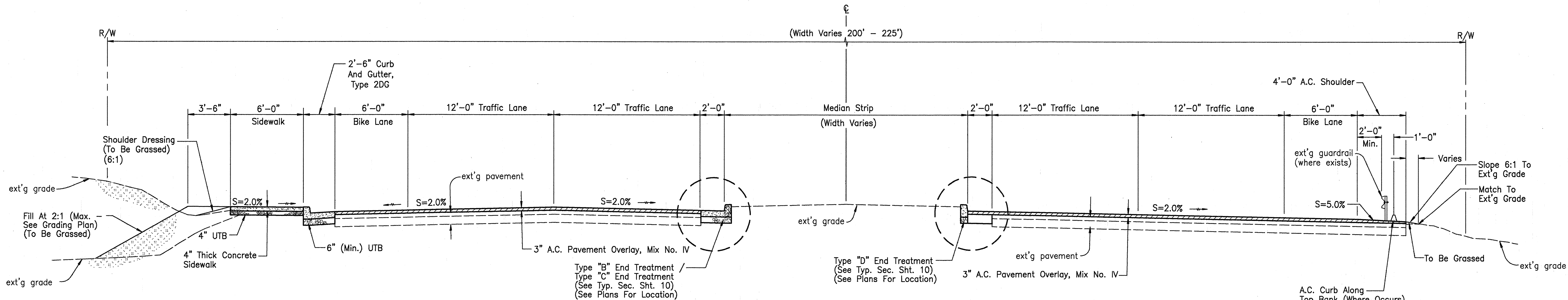


THIS WORK WAS PREPARED BY ME  
 OR UNDER MY SUPERVISION  
 Signature: *[Signature]* 4/18/00

STATE OF HAWAII  
 DEPARTMENT OF TRANSPORTATION  
 HIGHWAYS DIVISION  
**TYPICAL ROAD SECTIONS**  
 MAIN STREET RESURFACING  
 CENTRAL AVENUE TO KAAHUMANU AVENUE  
 AND  
 KAAHUMANU AVENUE RESURFACING  
 MAIN STREET TO HOBSON AVENUE  
 Fed. Aid Project No. NH-032-1(8)  
 SCALE: AS NOTED  
**SHEET No. 2 OF 7 SHEETS**

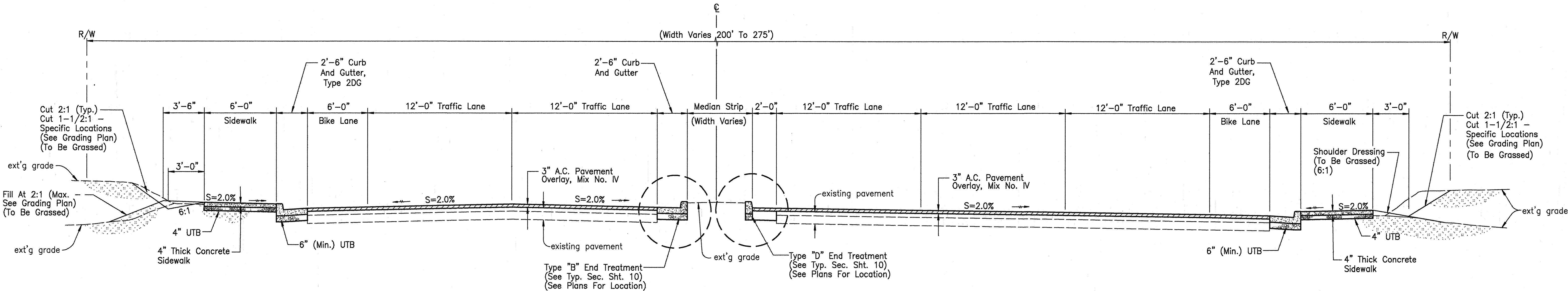


FED. ROAD DIST. NO.	STATE	FED. AID PROJ. NO.	FISCAL YEAR	SHEET NO.	TOTAL SHEETS
HAWAII	HAW.	NH-032-1(8)	2000	7	111



TYPICAL SECTION - MAUI LANI PARKWAY TO KANALOA AVE.

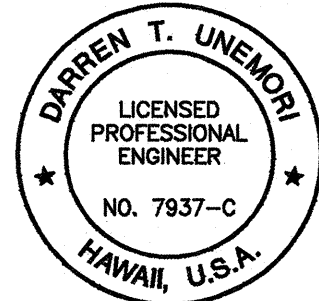
SCALE: 1/4 IN. = 1 FT.




TYPICAL SECTION – KANALOA AVENUE TO PAPA AVENUE

SCALE: 1/4 IN. = 1 FT.

ORIGINAL PLAN	SURVEY PLOTTED BY	DATE
	DRAWN BY	DATE
NOTE BOOK	TRACED BY	DATE
	DESIGNED BY	DATE
	QUANTITIES BY	DATE
	CHECKED BY	DATE
No.		



THIS WORK WAS PREPARED BY ME  
OR UNDER MY SUPERVISION

  
Signature

STATE OF HAWAII  
DEPARTMENT OF TRANSPORTATION  
HIGHWAYS DIVISION

## TYPICAL ROAD SECTIONS

## MAIN STREET RESURFACING

### CENTRAL AVENUE TO KAAHUMANU AVENUE

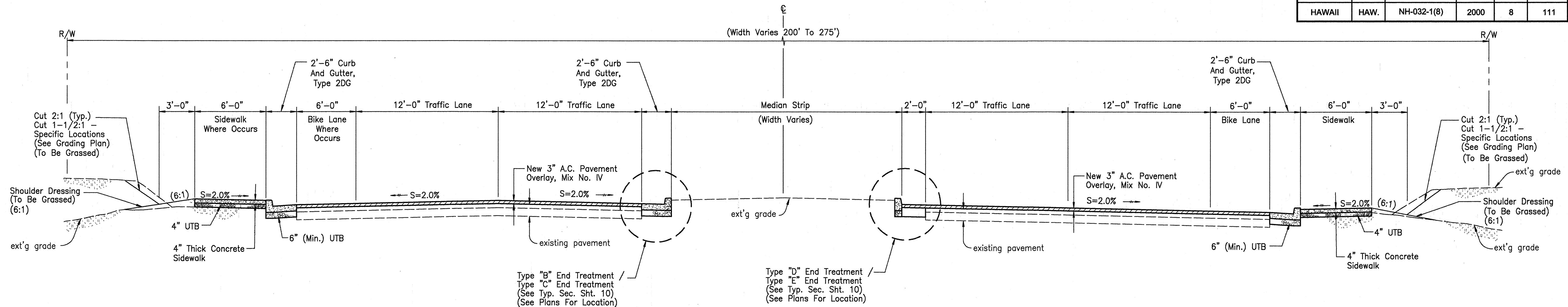
AND  
**KAAHUMANU AVENUE RESURFACING**

MAIN STREET TO HOBSON AVENUE  
Fed. Aid Project No. NH-032-1(8)

**SCALE: AS NOTE**

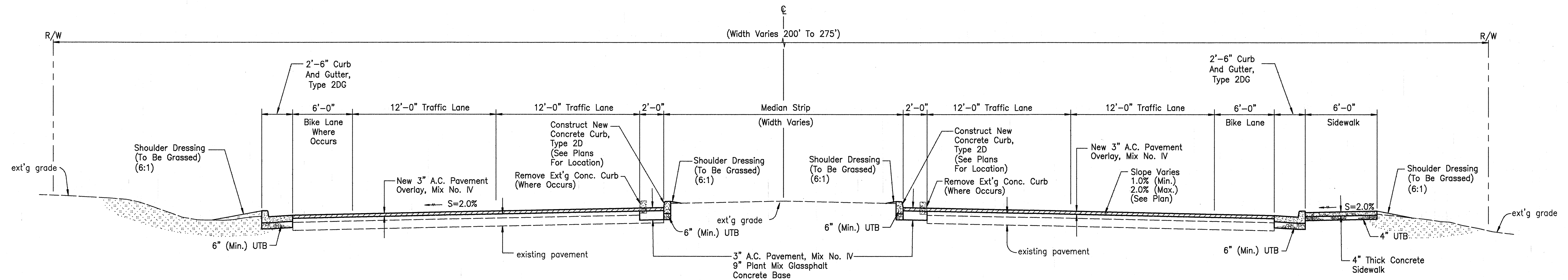
**SHEET No. 3 OF 7 SHEET**

FED. ROAD DIST. NO.	STATE	FED. AID PROJ. NO.	FISCAL YEAR	SHEET NO.	TOTAL SHEETS
HAWAII	HAW.	NH-032-1(8)	2000	8	111



**TYPICAL SECTION – PAPA AVENUE TO WAKEA AVENUE AND  
WAKEA AVENUE TO KAAHUMANU SHOPPING CENTER ENTRANCE**

SCALE: 1/4 IN. = 1 FT.

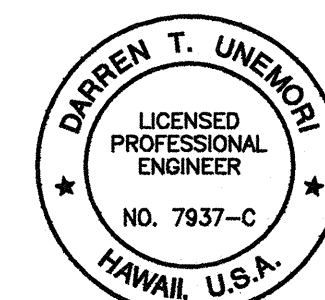


**TYPICAL SECTION – KAAHUMANU SHOPPING CENTER ENTRANCE TO KANE STREET**

SCALE: 1/4 IN. = 1 FT.

DATE	DATE	DATE	DATE	DATE	DATE
DESIGNED BY	DESIGNED BY	DESIGNED BY	DESIGNED BY	DESIGNED BY	DESIGNED BY
CHECKED BY	CHECKED BY	CHECKED BY	CHECKED BY	CHECKED BY	CHECKED BY
NO.	NO.	NO.	NO.	NO.	NO.

98901/08049/comp/plan/typsec04.dwg



THIS WORK WAS PREPARED BY ME  
OR UNDER MY SUPERVISION  
*[Signature]*  
Signature

STATE OF HAWAII  
DEPARTMENT OF TRANSPORTATION  
HIGHWAYS DIVISION

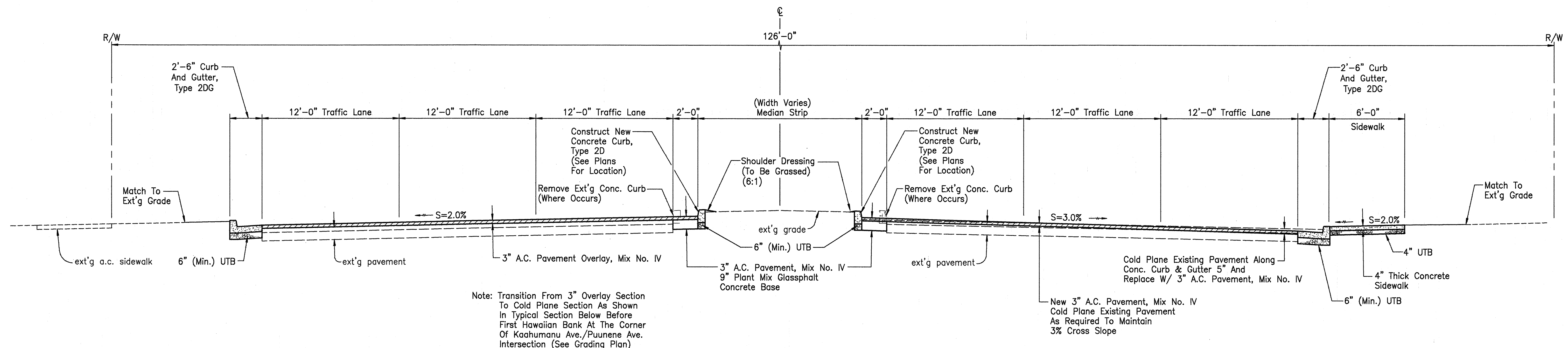
**TYPICAL ROAD SECTIONS**

**MAIN STREET RESURFACING**  
CENTRAL AVENUE TO KAAHUMANU AVENUE  
AND  
**KAAHUMANU AVENUE RESURFACING**  
MAIN STREET TO HOBSON AVENUE  
Fed. Aid Project No. NH-032-1(8)

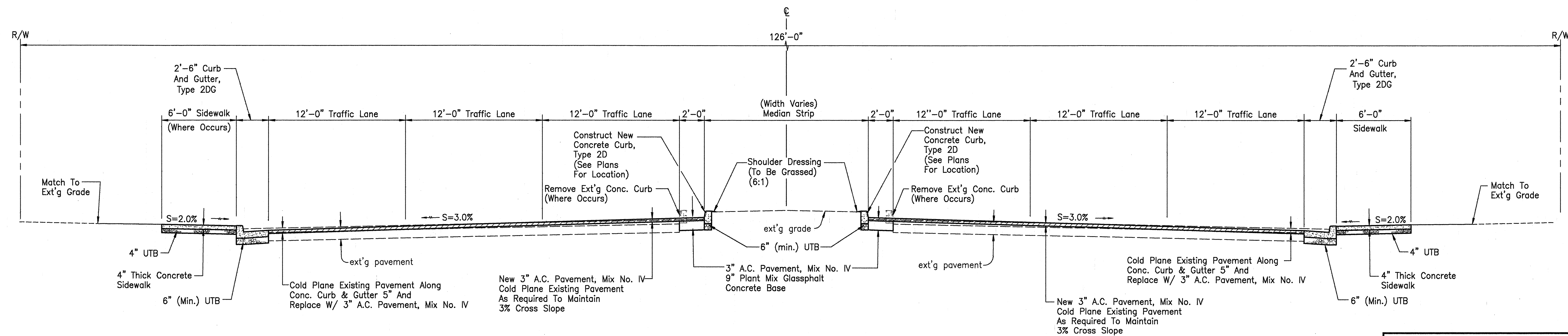
SCALE: AS NOTED



FED. ROAD DIST. NO.	STATE	FED. AID PROJ. NO.	FISCAL YEAR	SHEET NO.	TOTAL SHEETS
HAWAII	HAW.	NH-032-1(8)	2000	9	111

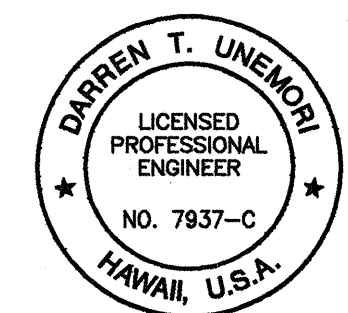


**TYPICAL SECTION – KANE STREET TO PUUNENE AVE.**  
SCALE: 1/4 IN. = 1 FT.



**TYPICAL SECTION – PUUNENE AVE. TO HANA HWY.**  
SCALE: 1/4 IN. = 1 FT.

DATE	DATE	DATE	DATE	DATE
DESIGNED BY	DESIGNED BY	DESIGNED BY	DESIGNED BY	DESIGNED BY
CHECKED BY	CHECKED BY	CHECKED BY	CHECKED BY	CHECKED BY
NO.	NO.	NO.	NO.	NO.



THIS WORK WAS PREPARED BY ME OR UNDER MY SUPERVISION

*[Signature]*

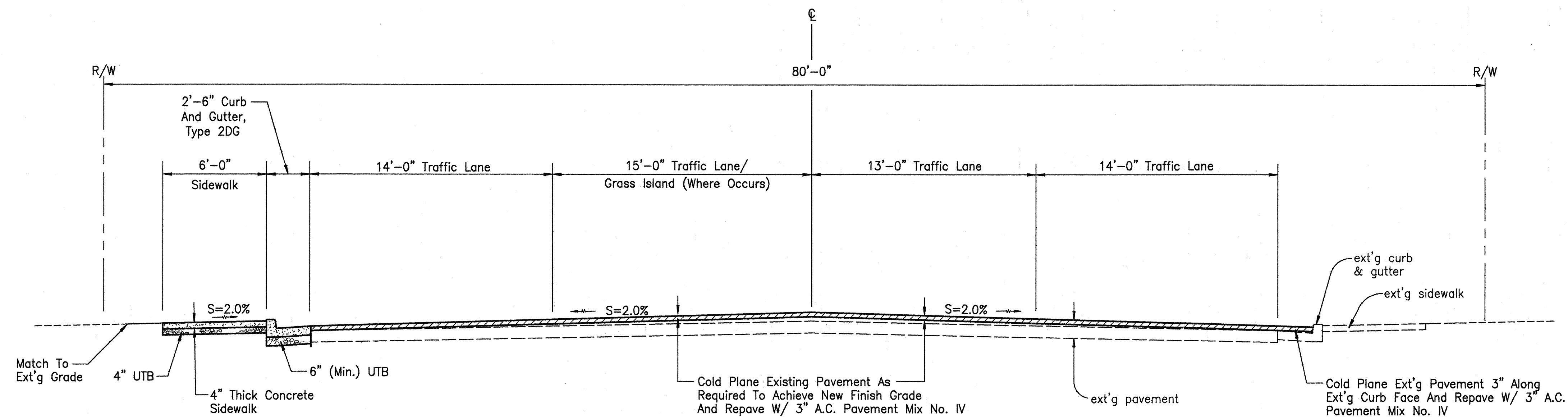
STATE OF HAWAII  
DEPARTMENT OF TRANSPORTATION  
HIGHWAYS DIVISION

**TYPICAL ROAD SECTIONS**

**MAIN STREET RESURFACING**  
CENTRAL AVENUE TO KAAHUMANU AVENUE  
AND  
**KAAHUMANU AVENUE RESURFACING**  
MAIN STREET TO HOBSON AVENUE  
Fed. Aid Project No. NH-032-1(8)

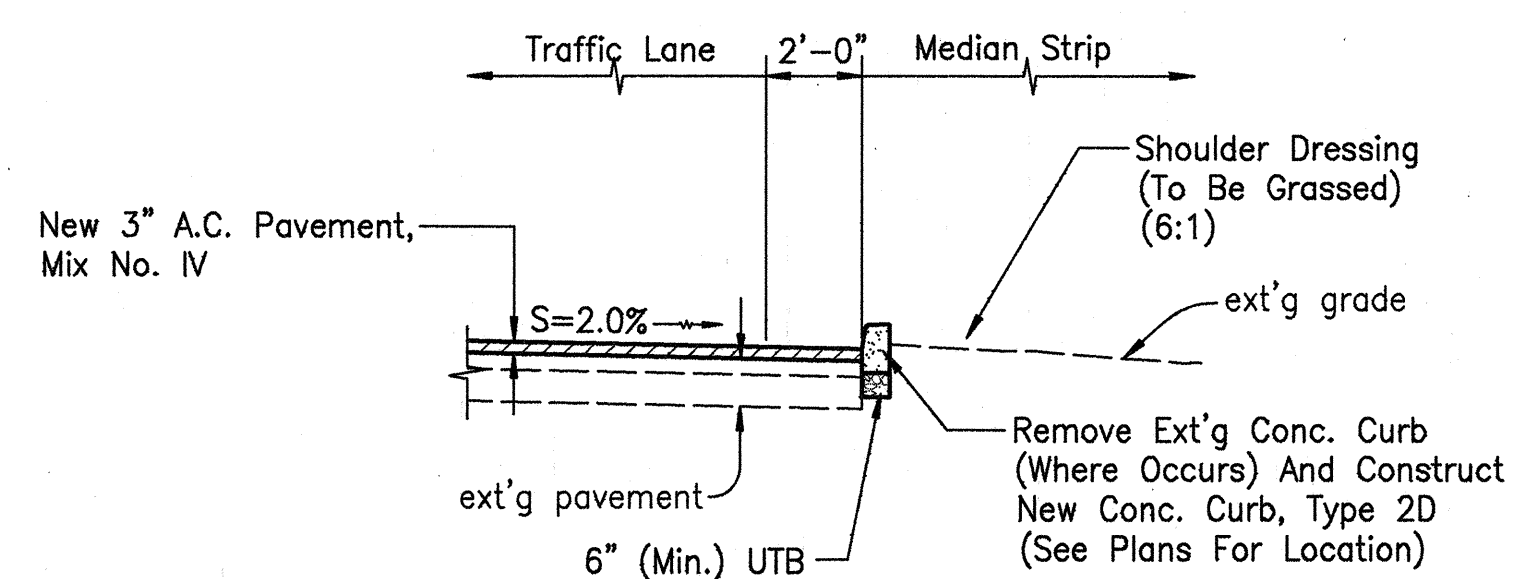
SCALE: AS NOTED

FED. ROAD DIST. NO.	STATE	FED. AID PROJ. NO.	FISCAL YEAR	SHEET NO.	TOTAL SHEETS
HAWAII	HAW.	NH-032-1(8)	2000	10	111



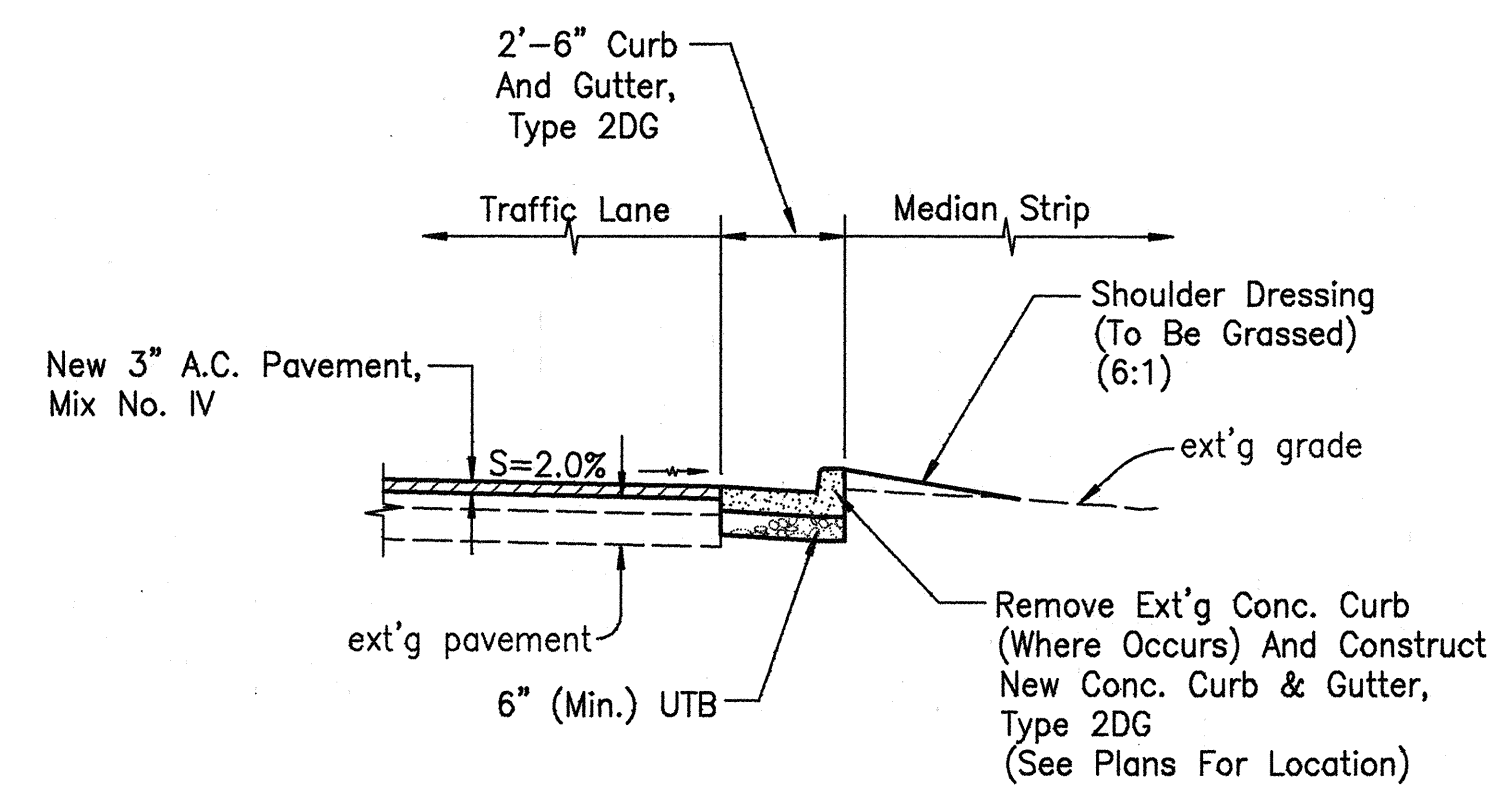
TYPICAL SECTION - HANA HWY. TO HOBRON AVE.

SCALE: 1/4 IN. = 1 FT.



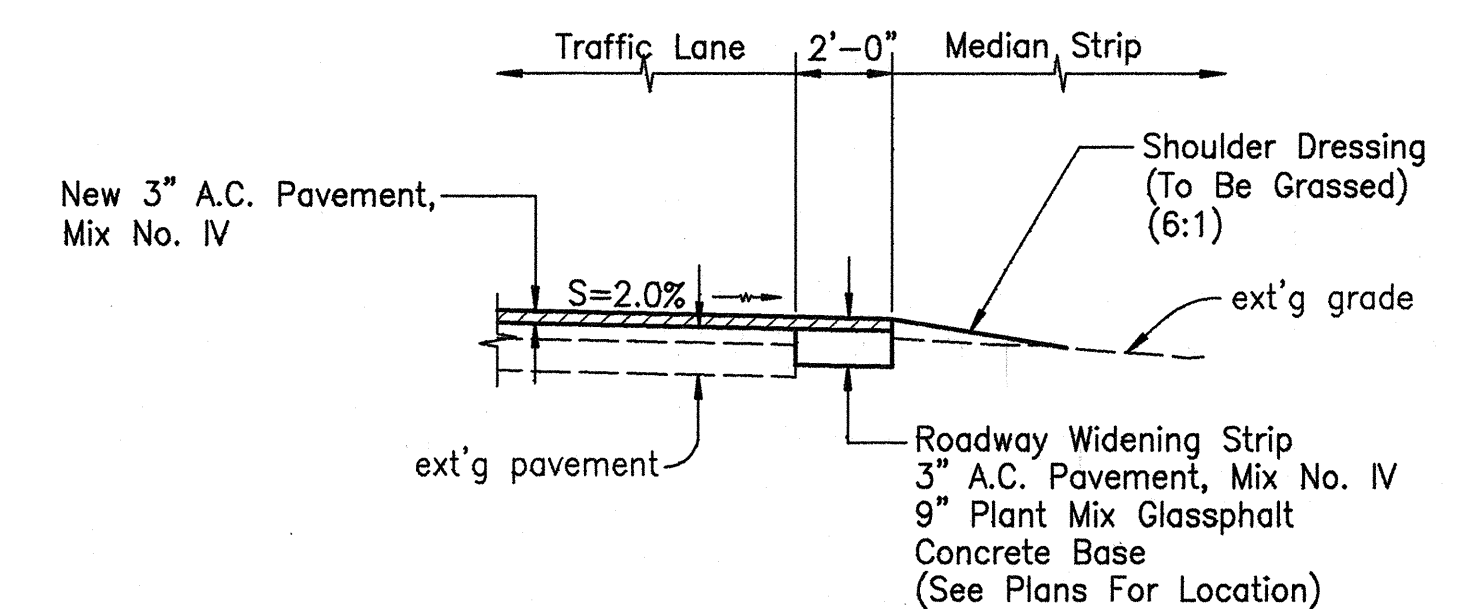
TYPICAL MEDIAN END TREATMENT TYPE "A"  
CONCRETE CURB (LEFT)

SCALE: 1/4 IN. = 1 FT.



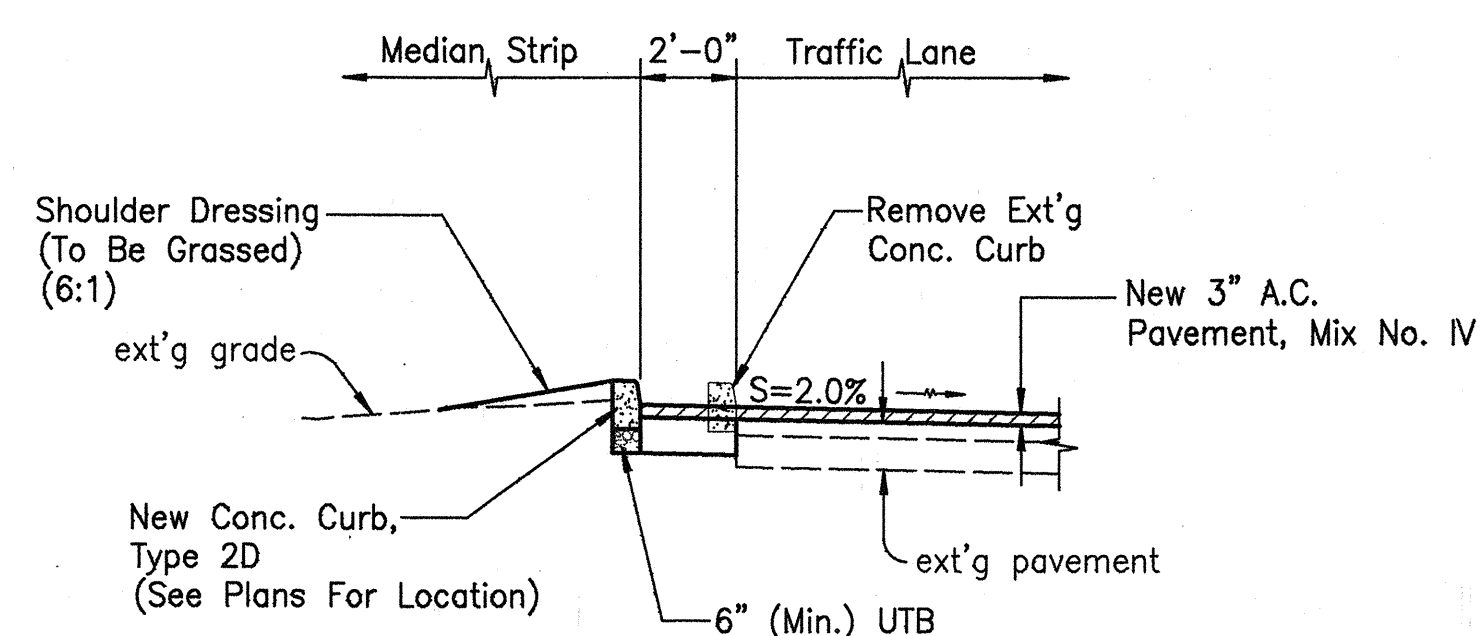
TYPICAL MEDIAN END TREATMENT TYPE "B"  
CONCRETE CURB & GUTTER (LEFT)

SCALE: 1/4 IN. = 1 FT.



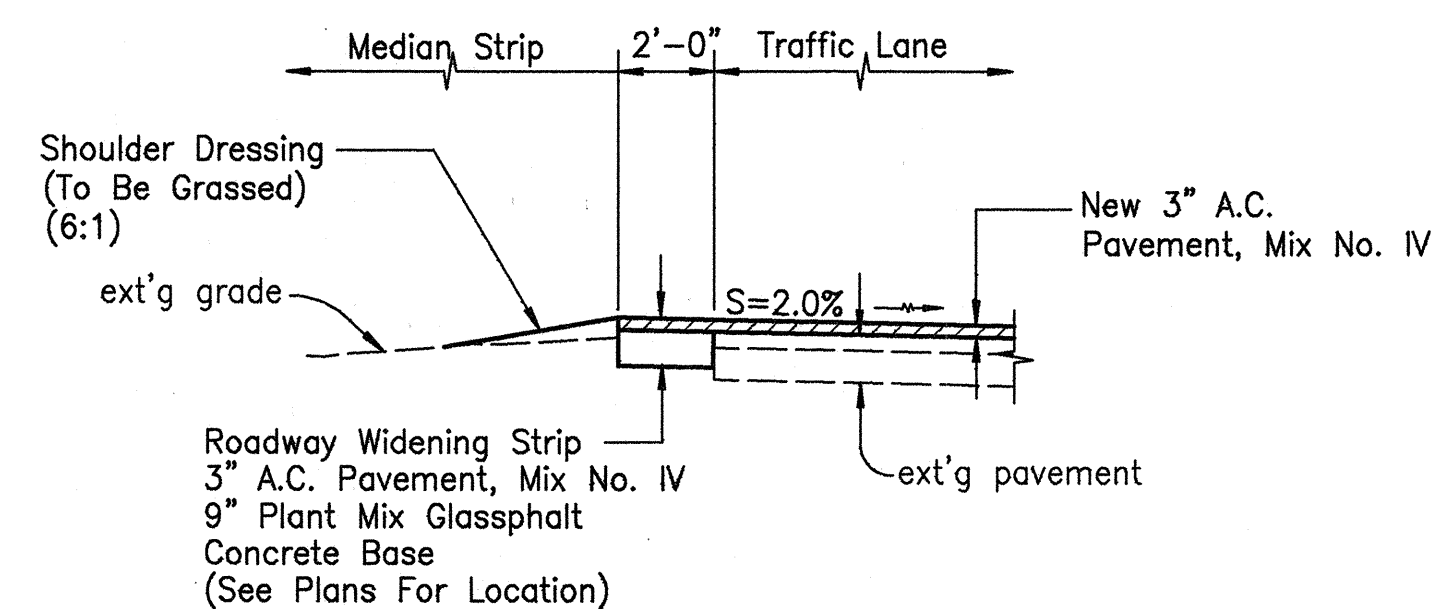
TYPICAL MEDIAN END TREATMENT TYPE "C"  
ROADWAY WIDENING STRIP (LEFT)

SCALE: 1/4 IN. = 1 FT.



TYPICAL MEDIAN END TREATMENT TYPE "D"  
CONCRETE CURB (RIGHT)

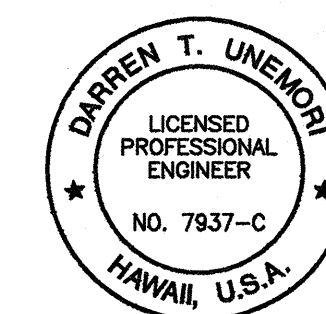
SCALE: 1/4 IN. = 1 FT.



TYPICAL MEDIAN END TREATMENT TYPE "E"  
ROADWAY WIDENING STRIP (RIGHT)

SCALE: 1/4 IN. = 1 FT.

ORIGINAL PLAN	SURVEY PLOTTED BY _____ DATE _____
	DRAWN BY _____ DATE _____
NOTE BOOK	TRACED BY _____ DATE _____
	DESIGNED BY _____ DATE _____
	QUANTITIES BY _____ DATE _____
	CHECKED BY _____ DATE _____
No. _____	



THIS WORK WAS PREPARED BY  
OR UNDER MY SUPERVISION

[Signature]

STATE OF HAWAII  
DEPARTMENT OF TRANSPORTATION  
HIGHWAYS DIVISION

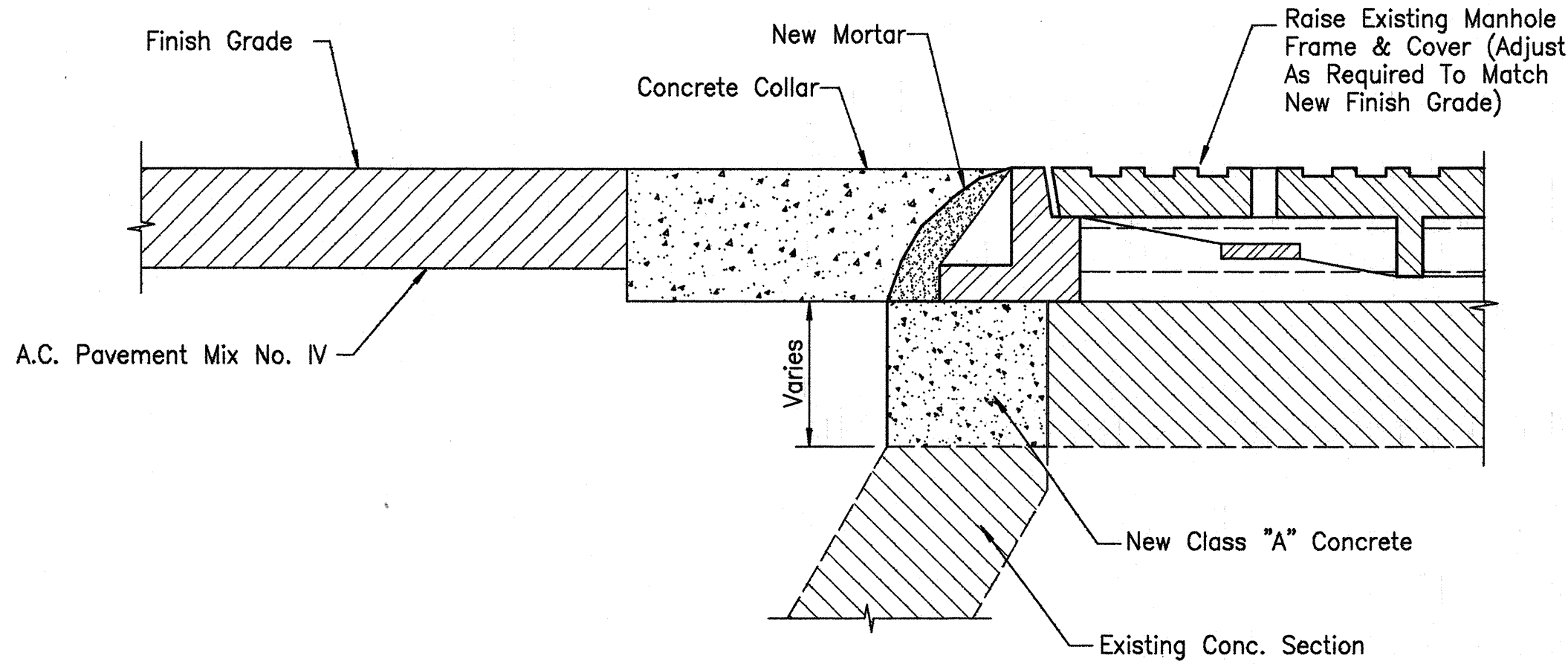
## TYPICAL ROAD SECTIONS

**MAIN STREET RESURFACING**  
**CENTRAL AVENUE TO KAAHUMANU AVENUE**  
**AND**  
**KAAHUMANU AVENUE RESURFACING**  
**MAIN STREET TO HOBRON AVENUE**  
Fed. Aid Project No. NH-032-1(8)

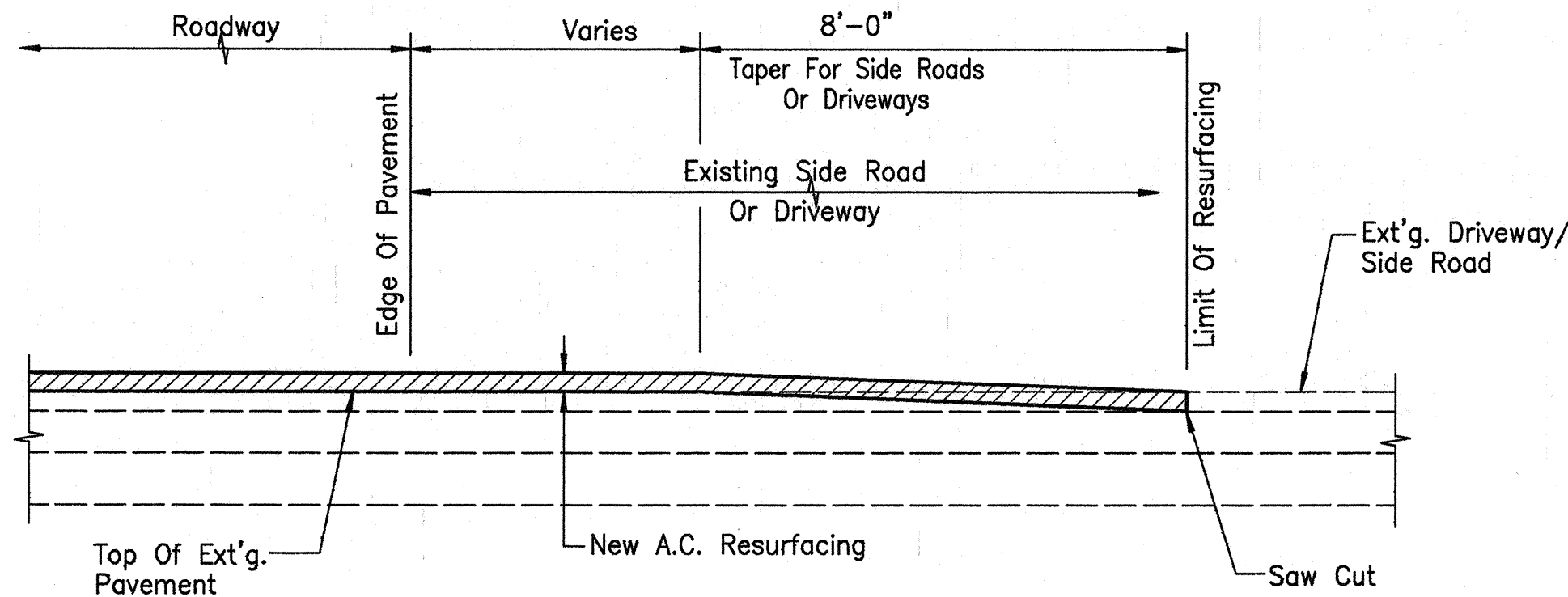
SCALE: AS NOTED

**SHEET No. 6 OF 7 SHEETS**

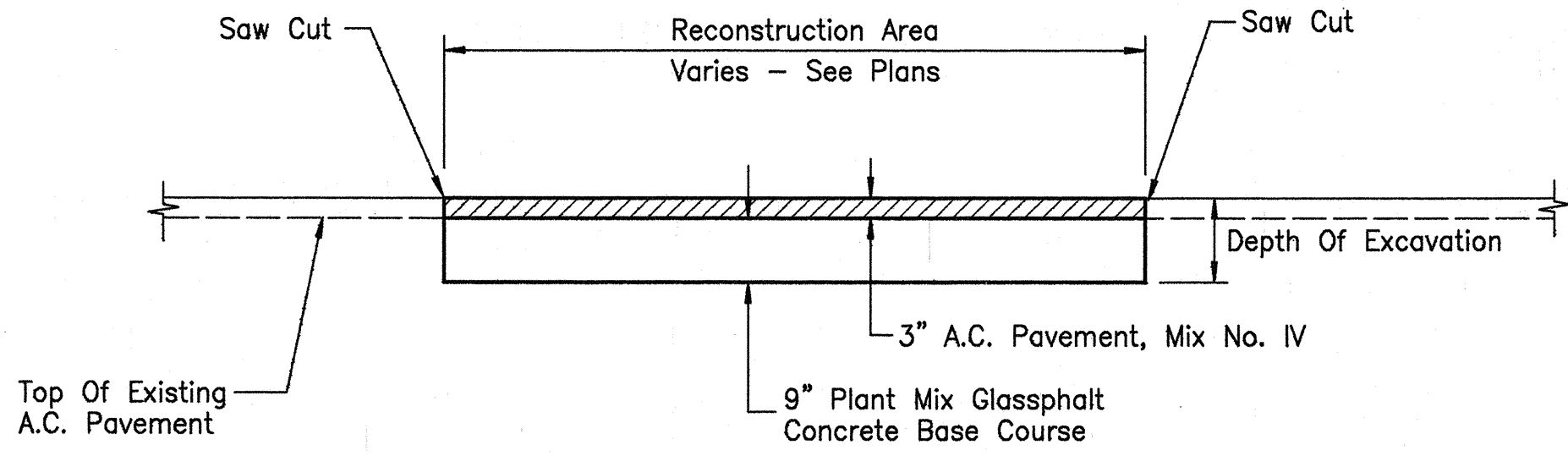
FED. ROAD DIST. NO.	STATE	FED. AID PROJ. NO.	FISCAL YEAR	SHEET NO.	TOTAL SHEETS
HAWAII	HAW.	NH-032-1(8)	2000	11	111



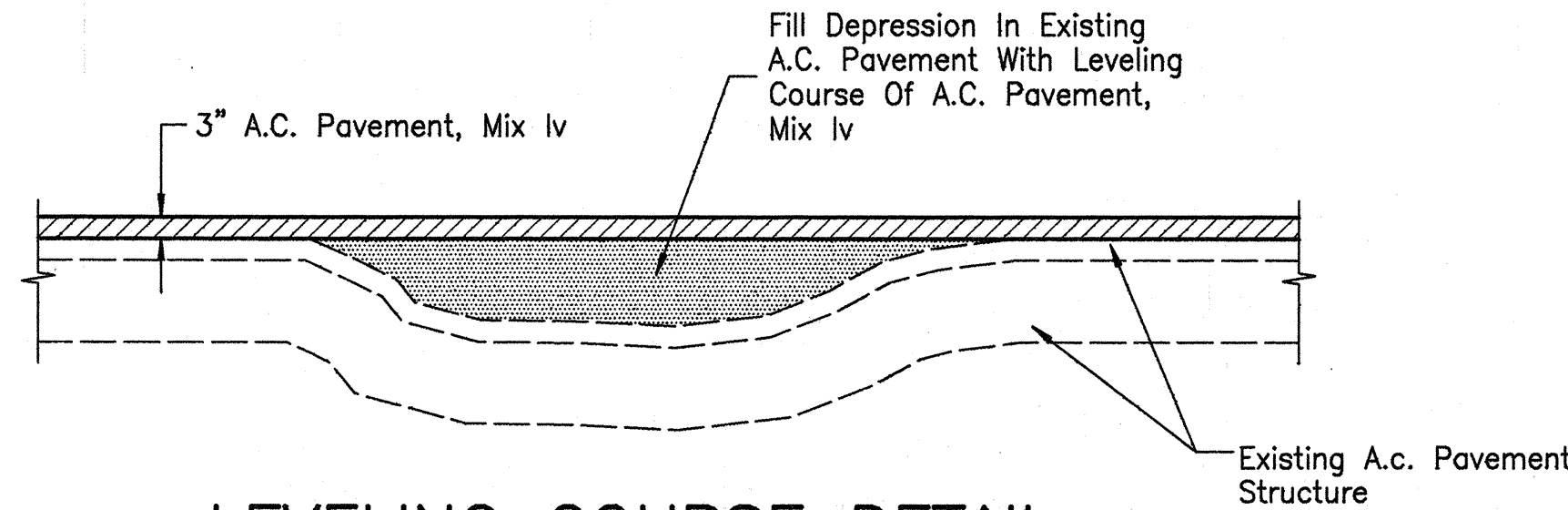
TYPICAL ADJUSTED MANHOLE  
NOT TO SCALE



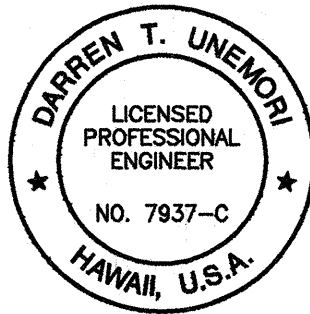
TYPICAL SECTION OF SIDE ROAD  
AND DRIVEWAY CONNECTION  
NOT TO SCALE



A.C. PAVEMENT RECONSTRUCTION DETAIL  
NOT TO SCALE



LEVELING COURSE DETAIL  
NOT TO SCALE



THIS WORK WAS PREPARED BY ME  
OR UNDER MY SUPERVISION  
*[Signature]*  
Signature

STATE OF HAWAII  
DEPARTMENT OF TRANSPORTATION  
HIGHWAYS DIVISION  
**TYPICAL ROAD SECTIONS**  
**MAIN STREET RESURFACING**  
CENTRAL AVENUE TO KAAHUMANU AVENUE  
AND  
**KAAHUMANU AVENUE RESURFACING**  
MAIN STREET TO HOBSON AVENUE  
Fed. Aid Project No. NH-032-1(8)

SCALE: AS NOTED  
SHEET No. 7 OF 7 SHEETS

DESIGNED BY	DATE
CHECKED BY	DATE
NOTED BY	DATE
QUANTITIES BY	DATE
TRACED BY	DATE
SURVEY PLOTTED BY	DATE
ORIGINAL PLAN	No.

98pwtj/88pwtj/complans/typsec00.dwg