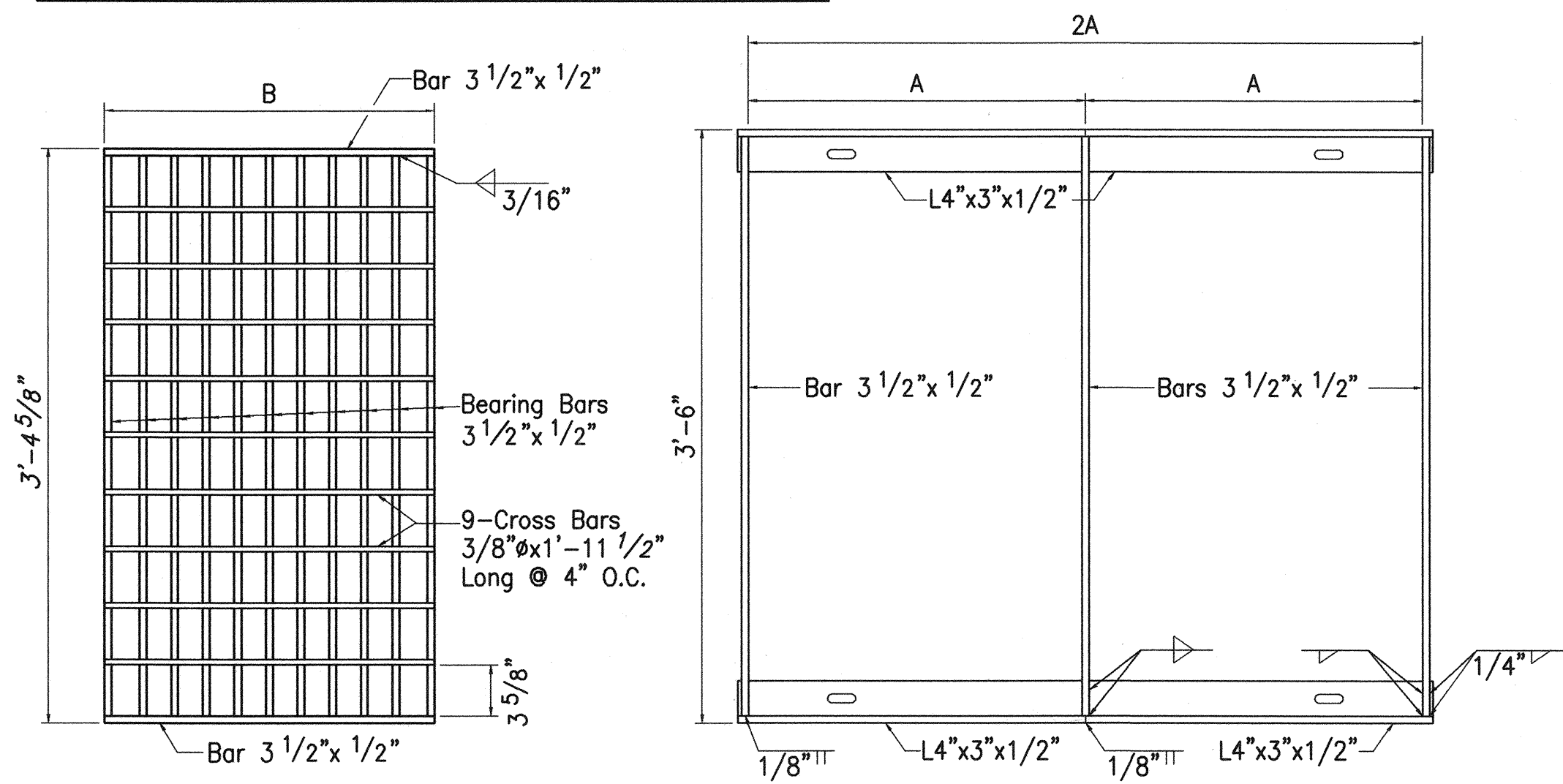
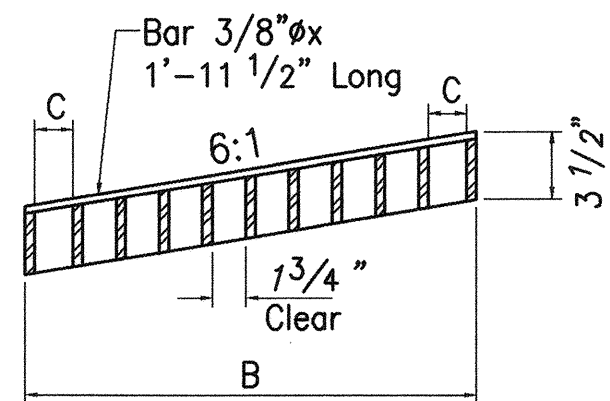


FED. ROAD DIST. NO.	STATE	FED. AID PROJ. NO.	FISCAL YEAR	SHEET NO.	TOTAL SHEETS
HAWAII	HAW.	NH-STP-032-1(6)	2000	26	53

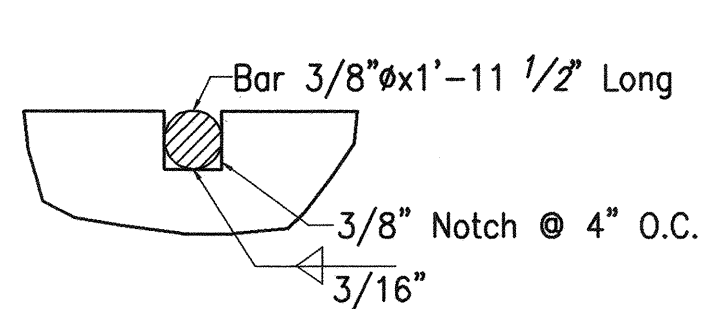
DIMENSIONS					
Type	No. Bars	A	B	C	D
61614P	11	2'-0"	1'-11 1/2"	2"	1'-6"
61616P	17	3'-0"	2'-11 3/8"	1 3/16"	2'-0"



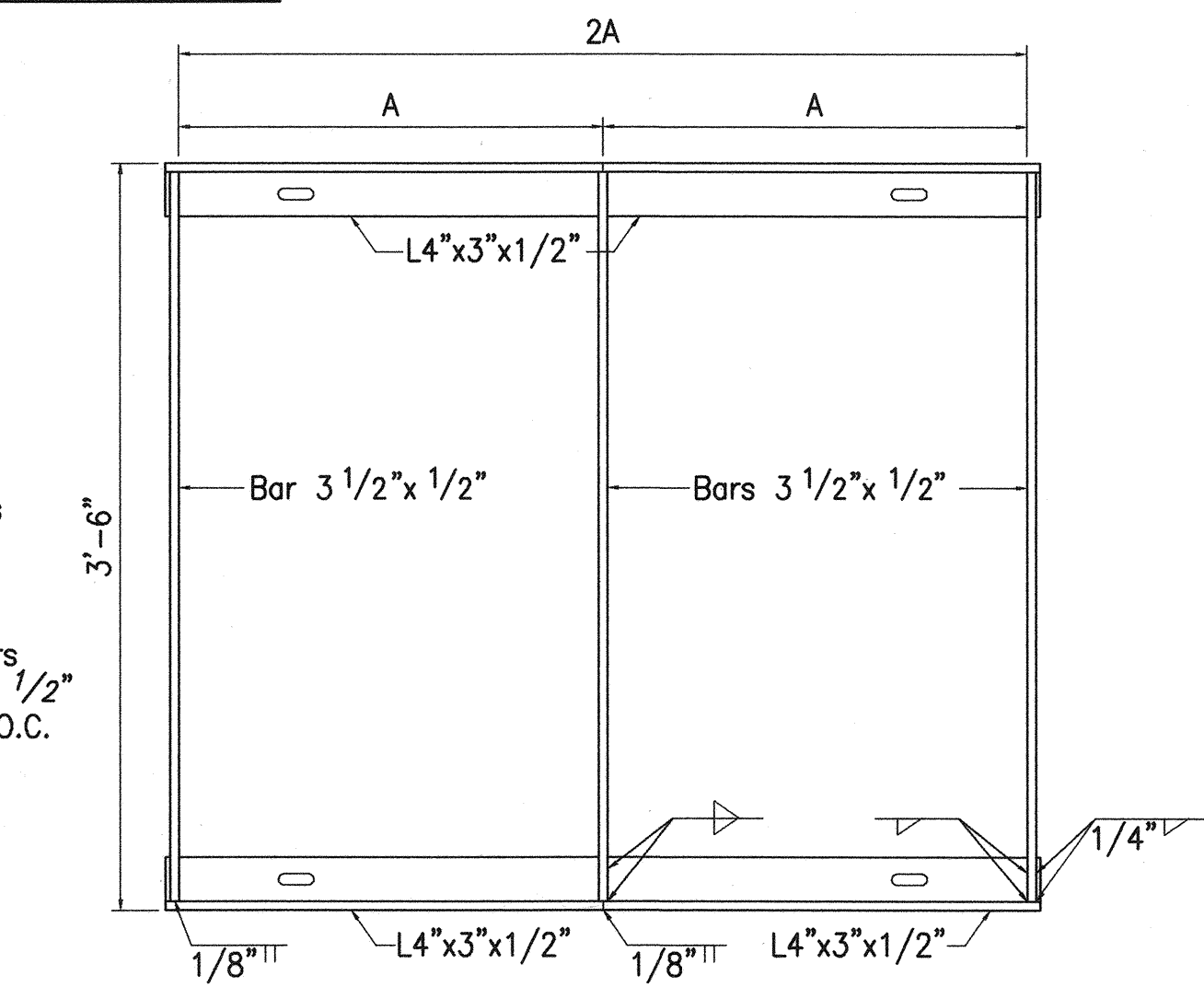
Plan - Grate



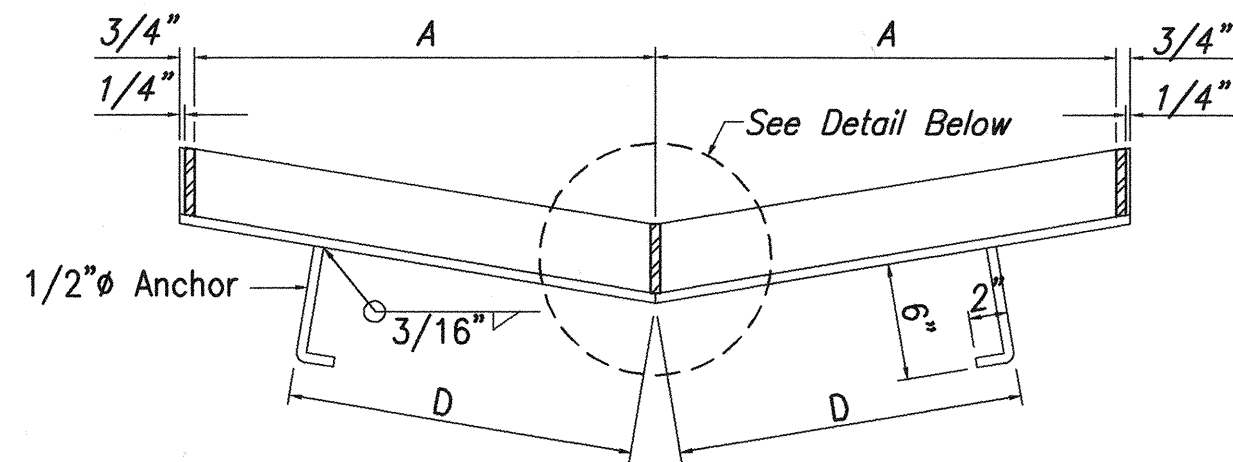
Cross Section - Grate



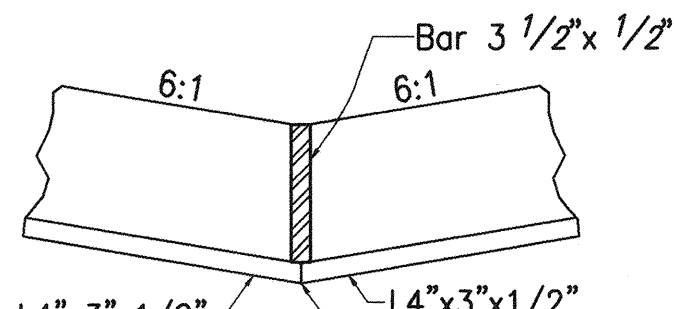
Notch Detail  
Not To Scale



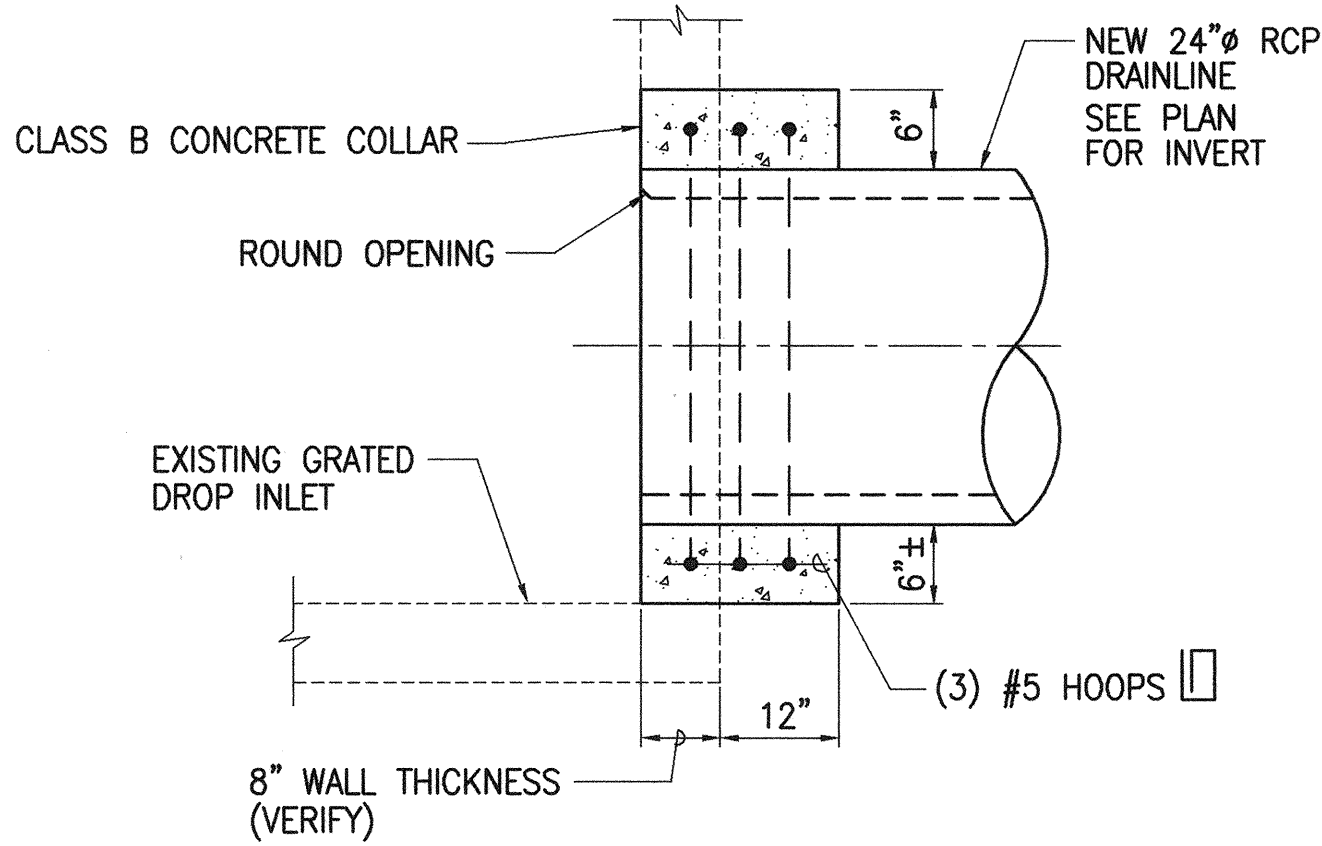
Plan - Frame



Cross Section - Frame



Detail  
Not To Scale



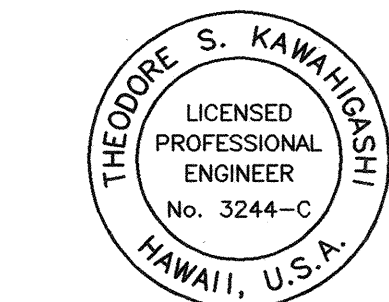
NOTE:  
BREAK NEAT HOLE IN EXISTING STRUCTURE, CUT AND BEND EXISTING REINFORCING AROUND NEW DRAINLINE AS REQUIRED. ROUGHEN AND CLEAN WALL OPENING, COAT SURFACE WITH CONCRETE EPOXY ALL AROUND JUST PRIOR TO POURING CONCRETE COLLAR. ALL WORK WILL BE CONSIDERED AS INCIDENTAL TO VARIOUS DRAINAGE ITEMS.

RCP CONNECTION TO EXIST. DRAINAGE STRUCTURE  
NOT TO SCALE

### TYPICAL FRAME AND GRATE DETAIL FOR TYPE 61614P AND 61616P GRATED DROP INLET

Scale: 1 1/2"=1'-0"

- Note:
1. Frames and Grates shall be Considered as Incidental to Type 61614 and 61616 Grated Drop Inlet, Item Nos. 604.6020, 604.6021 and 604.6030 and also Reconstruct G.D.I., Item No. 604.6040.
  2. For Typical Type 61614 and 61616 Grated Drop Inlet Detail, See State Standard Plan H-11 and H-12.
  3. All Welds 3/8" Unless Otherwise Noted.



THIS WORK WAS PREPARED BY ME  
OR UNDER MY SUPERVISION  
*Theodore S. Kawahigashi*  
Signature

STATE OF HAWAII  
DEPARTMENT OF TRANSPORTATION  
HIGHWAYS DIVISION

DRAINAGE DETAILS  
KAAHUMANU AVENUE  
TRAFFIC SIGNAL MODERNIZATION  
HIGH STREET TO WHARF STREET  
FEDERAL AID PROJECT NO. NH-STP-032-1(6)

SCALE: AS NOTED

DATE: AUG. 1999