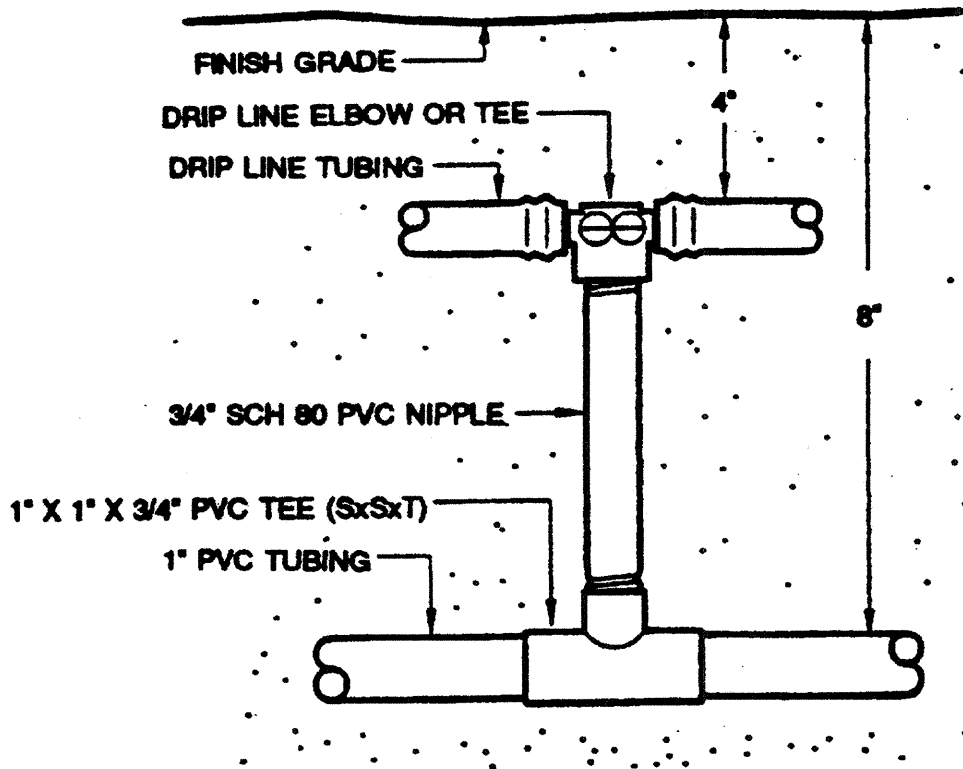
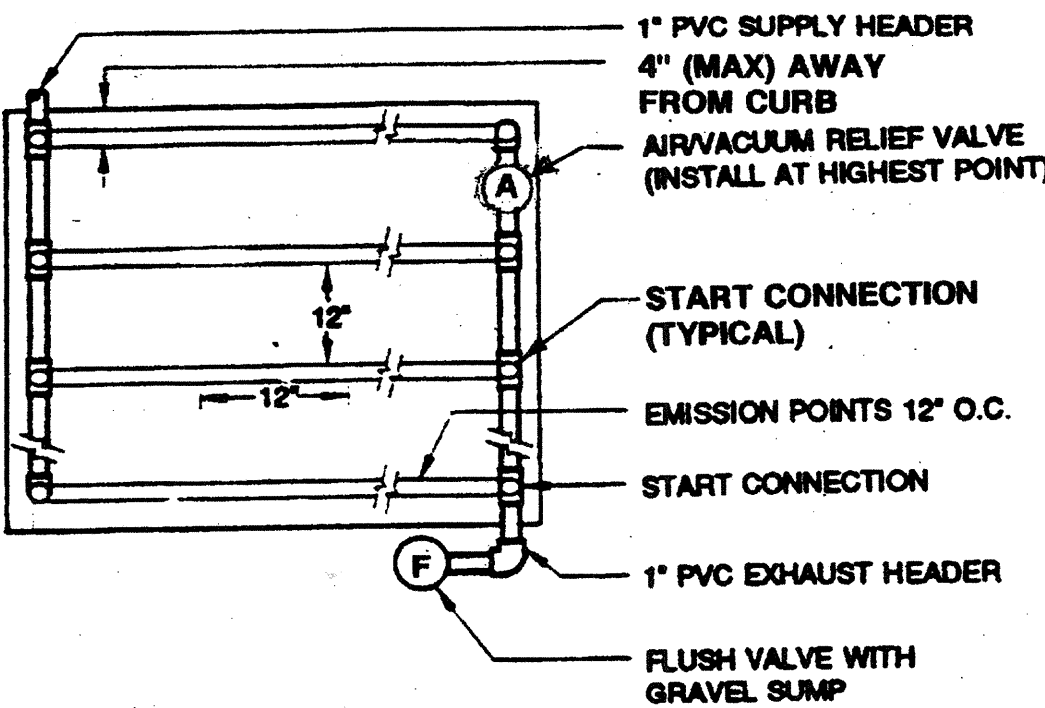


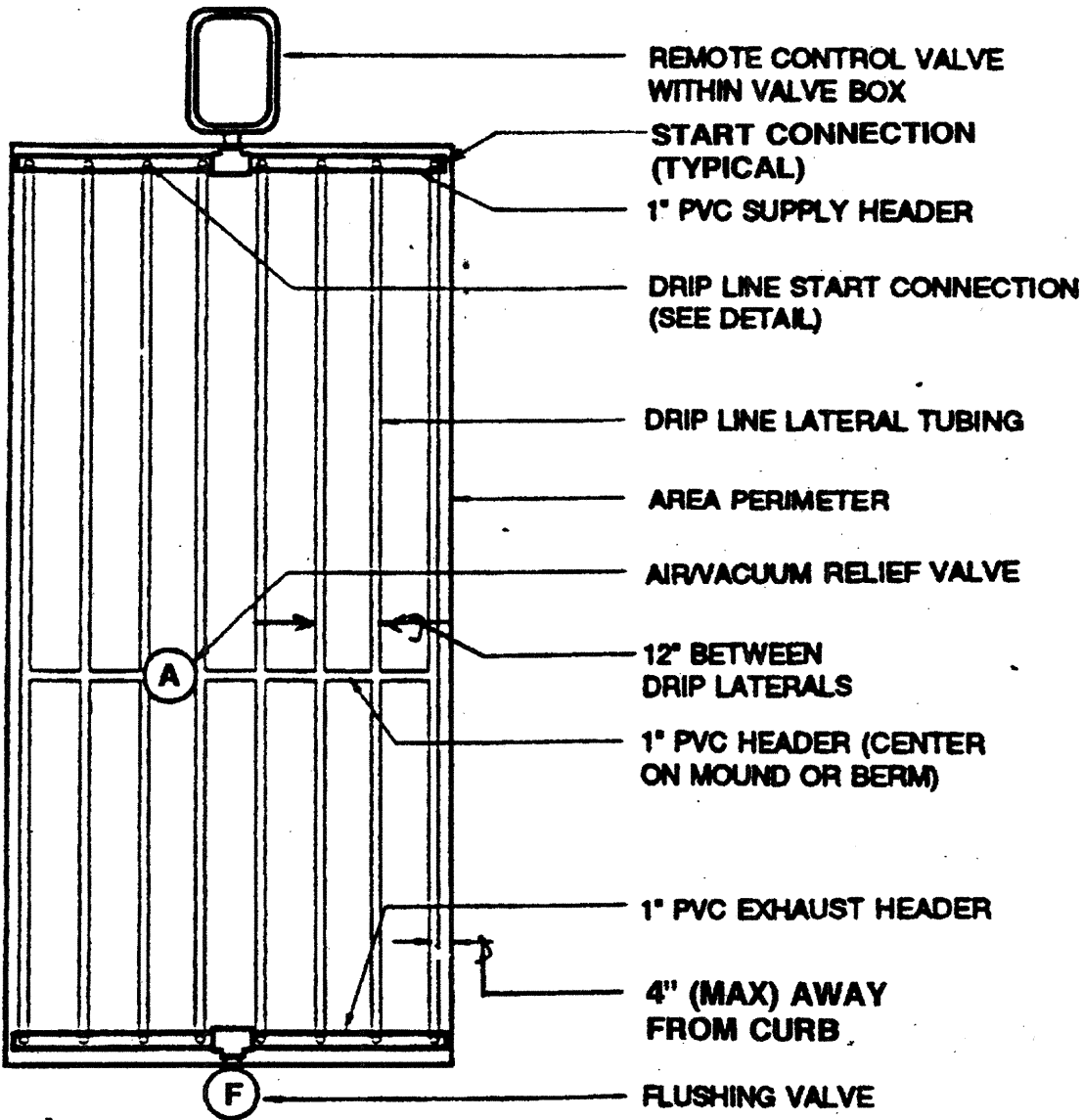
FED. ROAD DIST. NO.	STATE	FED. AID PROJ. NO.	FISCAL YEAR	SHEET NO.	TOTAL SHEETS
HAWAII	HI.	STP- 032-I (7)	2001	9	11



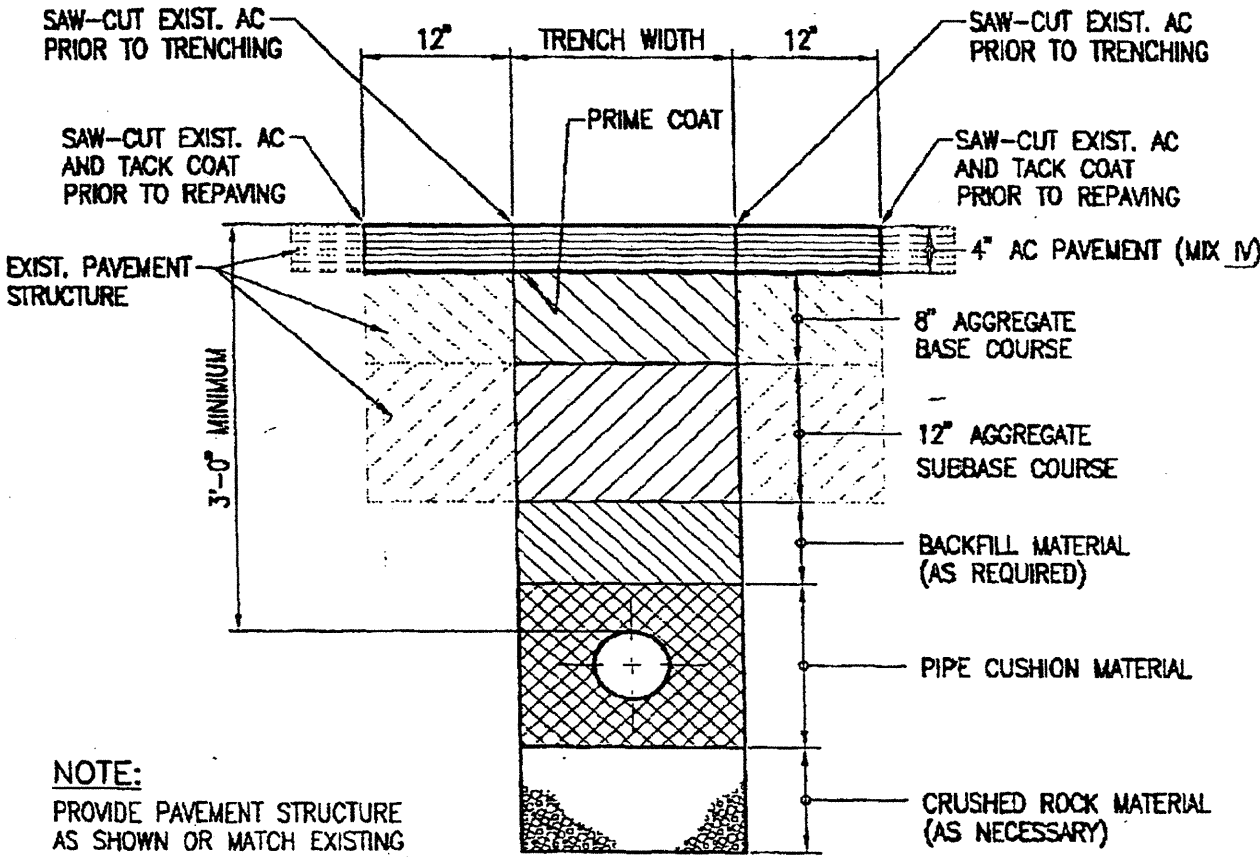
START CONNECTION DETAIL
N.T.S.



DRIP TUBING AND ACCESSORIES DETAIL
N.T.S.

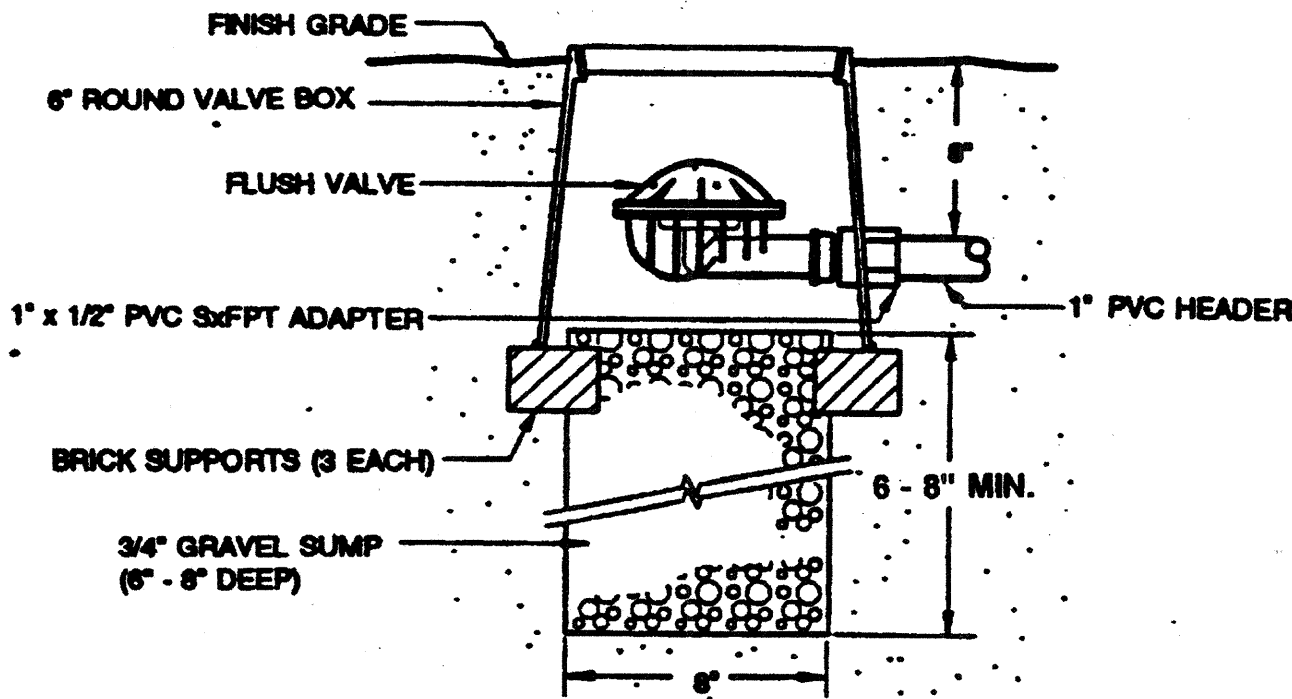


TYPICAL DRIP LAYOUT DETAIL
(END FEED SYSTEM) N.T.S.

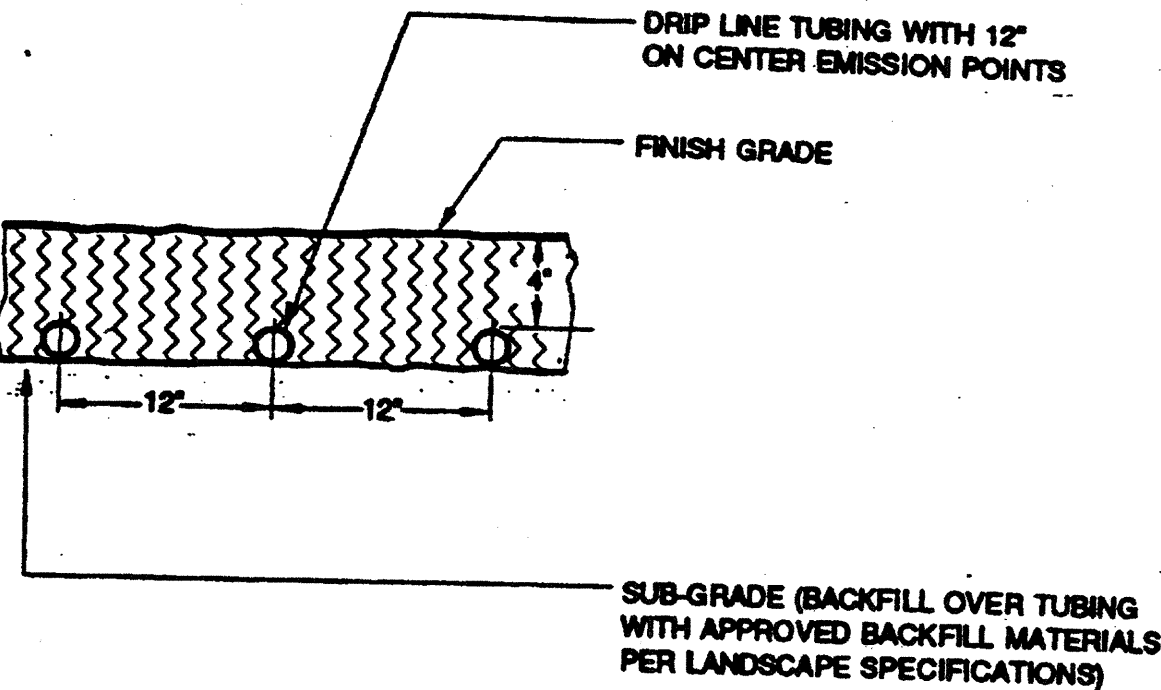


NOTE:
PROVIDE PAVEMENT STRUCTURE
AS SHOWN OR MATCH EXISTING
WHICHEVER IS GREATER.

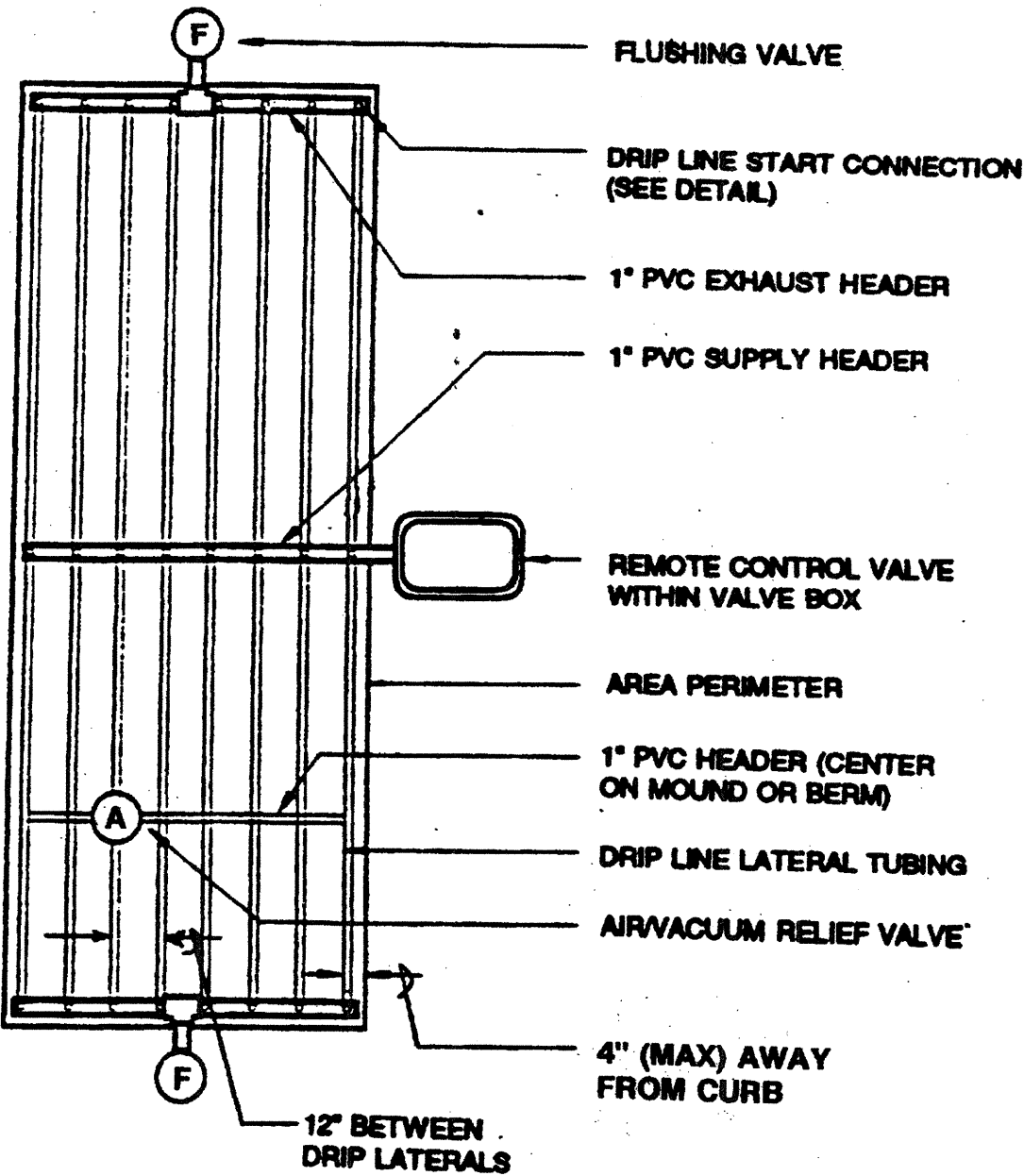
TYPICAL TRENCH SECTION
(IN ROADWAY)
NOT TO SCALE



FLUSHING VALVE DETAIL
N.T.S.

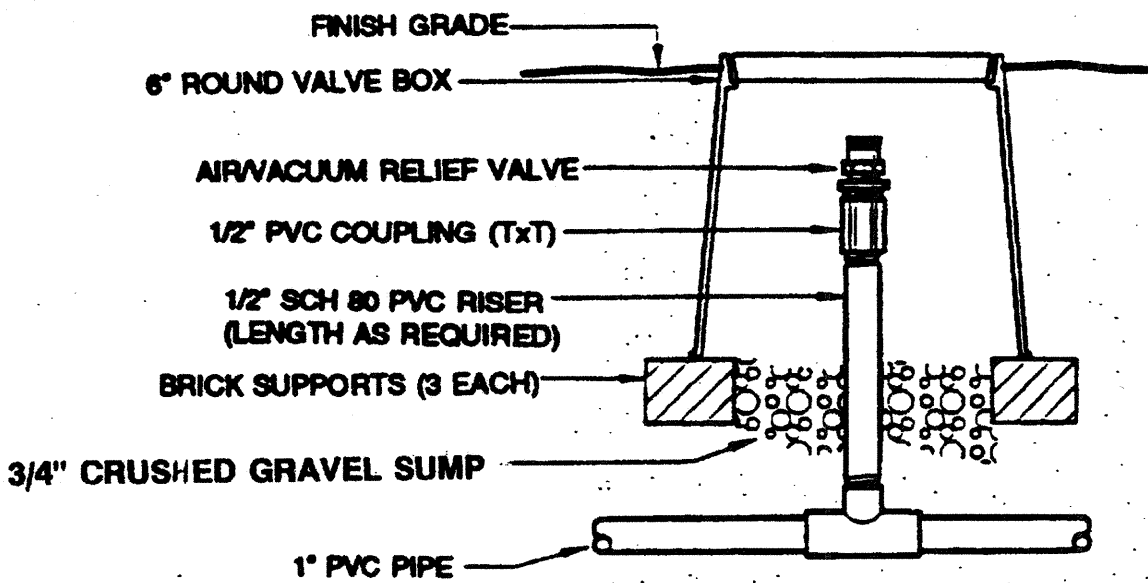


SUB-GRADE INSTALLATION DETAIL
N.T.S.



TYPICAL DRIP LAYOUT DETAIL
(CENTER FEED SYSTEM) N.T.S.

NOTE:
SEE PLANTING PLANS FOR LOCATION OF
START CONNECTION HEADERS.



AIR/VACUUM RELIEF DETAIL
N.T.S.



This work was prepared by me or under
my direct supervision and construction of
this project will be under my supervision.

REVISION	DATE	DESCRIPTION	MADE BY	APPROVED
STATE OF HAWAII DEPARTMENT OF TRANSPORTATION HIGHWAYS DIVISION				
IRRIGATION DETAILS				
KAAHUMANU AVENUE LANDSCAPE IMPROVEMENTS PHASE 1 FROM LOND AVENUE TO HANA HIGHWAY				
KAHULUI, MAUI, HAWAII				