

FED. ROAD DIST. NO.	STATE	FED. AID PROJ. NO.	FISCAL YEAR	SHEET NO.	TOTAL SHEETS
HAWAII	HI.	STP- 032-I (7)	2001	5	11

WATER SYSTEM:

1. The Contractor shall notify the Department of Water Supply (DWS), in writing, one (1) week prior to commencement of work.
2. All materials used and method of construction of water system facilities shall be in accordance with the latest revisions of DWS Standards. Contractor shall obtain the latest revisions of the DWS Standard Details before commencing construction.
3. The Contractor shall submit a materials list to DWS for approval prior to construction.
4. The Contractor shall submit two sets of Record Drawings via a consultant prior to acceptance of the water system.

NOTE:
ALL IRRIGATION EQUIPMENT IS SHOWN
DIAGRAMMATICALLY. ADJUST AS REQUIRED
TO ACCOMMODATE EXISTING FIELD CONDITIONS
AND LANDSCAPE PLANTINGS.

CONTROLLER SHOWN DIAGRAMMATICALLY
SEE SLAB DETAIL (SHT. 10)
FOR EXACT LOCATION.

TO TREE BUBBLER SYSTEM
(SEE SHT. 7)

FLUSH VALVE
(TYP.)

AIR/VACUUM RELIEF VALVE
(TYP.)

EXISTING 2" COPPER PIPE UNDER ROADWAY

REMOVE EXISTING PIPE AND APERTURES
INSTALL NEW 2" SCH 40 PVC PIPE
BETWEEN METER AND EXISTING COPPER
PIPING UNDER ROADWAY.
RESTORE GRADE AND LANDSCAPE TO
MATCH EXISTING CONDITIONS.

BACKFLOW PREVENTION DATA

Project Name Kaahumanu Avenue Landscape Improvements
Service Address Kaahumanu Avenue
Type of Device Reduced Pressure Principle Backflow Preventers
Size/Make/Model 2"/Buckner/24000
Remarks: Or Approved Equal

2" WM #5932181

NOTE:
SEE PLANTING PLANS FOR LOCATION OF
IRRIGATION EQUIPMENT SLABS AND DRIP
IRRIGATION START CONNECTION HEADERS.

MEDIAN 4

NOTE:
ALL IRRIGATION EQUIPMENT IS SHOWN
DIAGRAMMATICALLY. ADJUST AS REQUIRED
TO ACCOMMODATE EXISTING FIELD CONDITIONS
AND LANDSCAPE PLANTINGS.

TO TREE BUBBLER SYSTEM
(SEE SHT. 7)

CONTROLLER SHOWN DIAGRAMMATICALLY
SEE SLAB DETAIL (SHT. 10)
FOR EXACT LOCATION.

FLUSH VALVE
(TYP.)

AIR/VACUUM RELIEF VALVE
(TYP.)
PAIA

EXISTING 2" COPPER PIPE UNDER ROADWAY

REMOVE EXISTING PIPE AND APERTURES
INSTALL NEW 2" SCH 40 PVC PIPE
BETWEEN METER AND EXISTING COPPER
PIPING UNDER ROADWAY.
RESTORE GRADE AND LANDSCAPE TO
MATCH EXISTING CONDITIONS.

BACKFLOW PREVENTION DATA

Project Name Kaahumanu Avenue Landscape Improvements
Service Address Kaahumanu Avenue
Type of Device Reduced Pressure Principle Backflow Preventers
Size/Make/Model 2"/Buckner/24000
Remarks: Or Approved Equal

2" WM #31933053

MEDIAN 3

REVISION	DATE	DESCRIPTION	MADE BY	APPROVED
----------	------	-------------	---------	----------

STATE OF HAWAII
DEPARTMENT OF TRANSPORTATION
HIGHWAYS DIVISION

DRIP IRRIGATION PLAN 1

KAAHUMANU AVENUE
LANDSCAPE IMPROVEMENTS

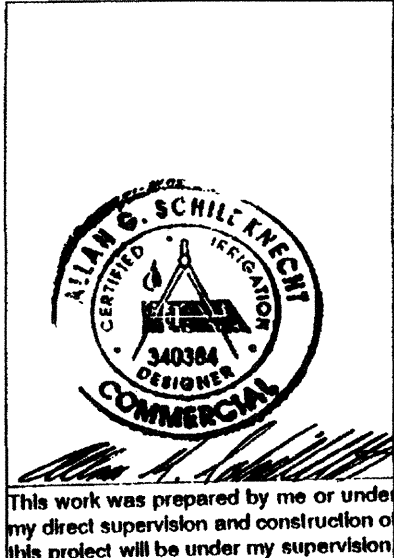
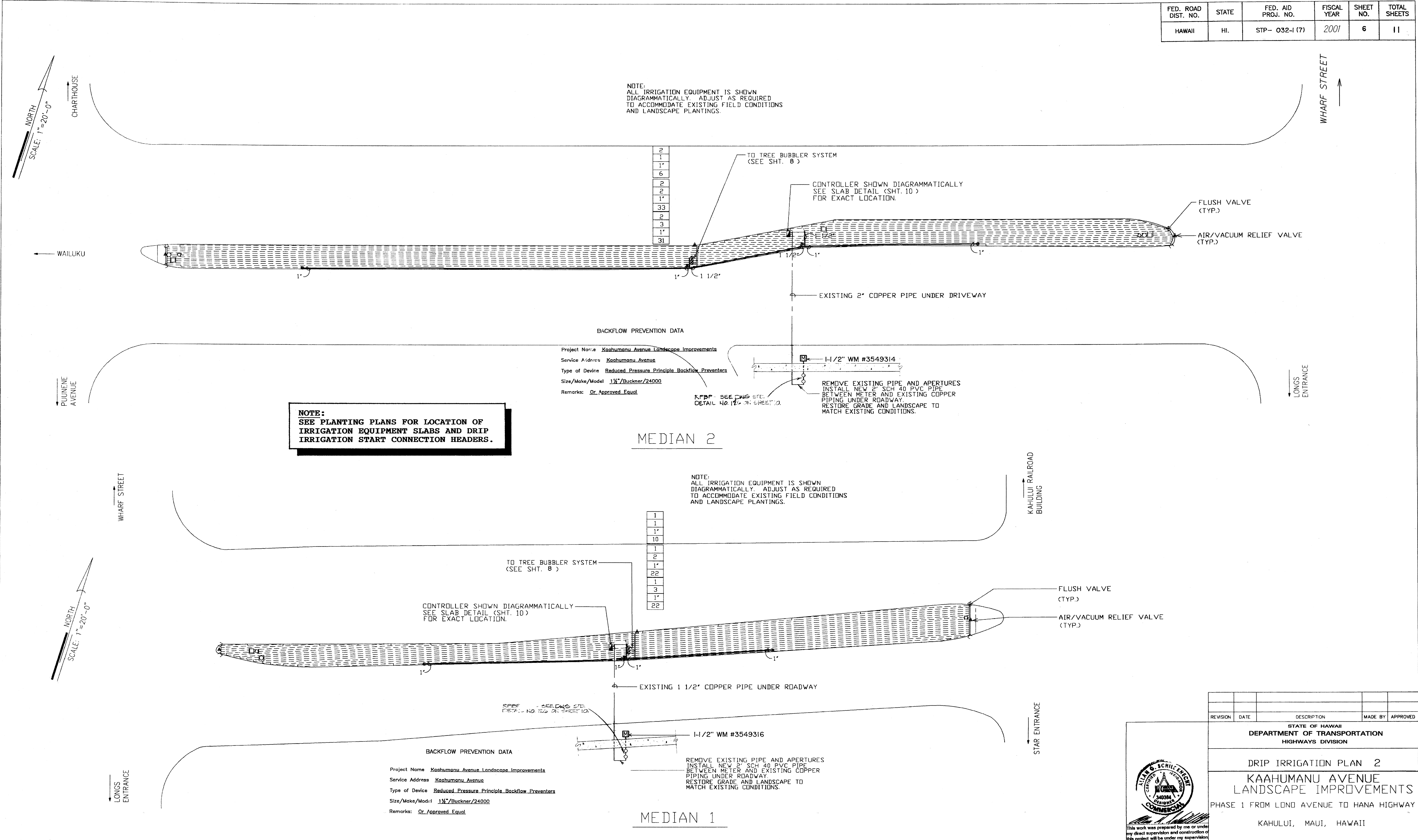
PHASE 1 FROM LONO AVENUE TO HANA HIGHWAY

KAHULUI, MAUI, HAWAII



This work was prepared by me or under
my direct supervision and construction of
this project will be under my supervision.

FED. ROAD DIST. NO.	STATE	FED. AID PROJ. NO.	FISCAL YEAR	SHEET NO.	TOTAL SHEETS
HAWAII	HI.	STP- 032-I (7)	2001	6	11



REVISION	DATE	DESCRIPTION	MADE BY	APPROVED
STATE OF HAWAII DEPARTMENT OF TRANSPORTATION HIGHWAYS DIVISION				
DRIP IRRIGATION PLAN 2				
KAAHUMANU AVENUE LANDSCAPE IMPROVEMENTS				
PHASE 1 FROM LOND AVENUE TO HANA HIGHWAY				
KAHULUI, MAUI, HAWAII				