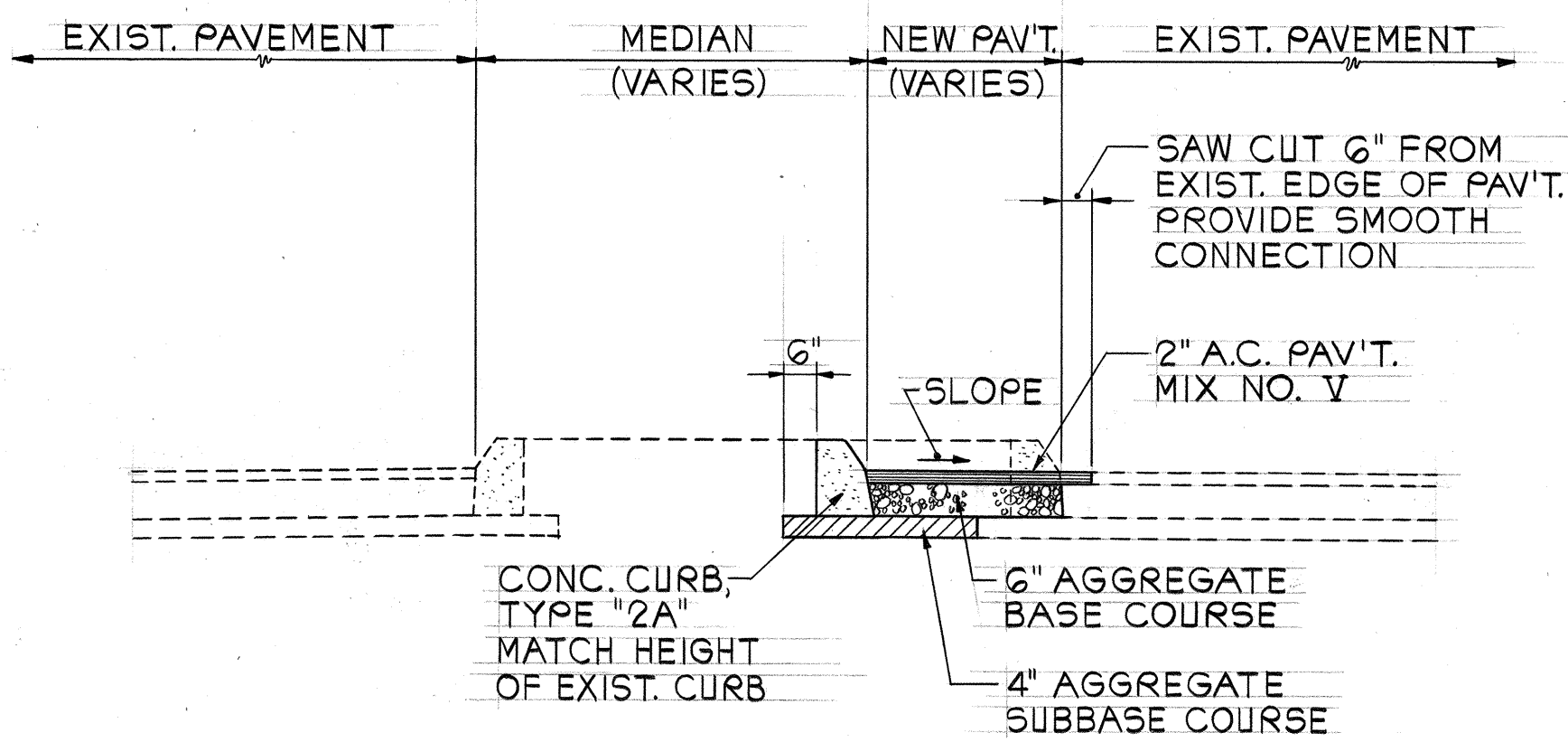
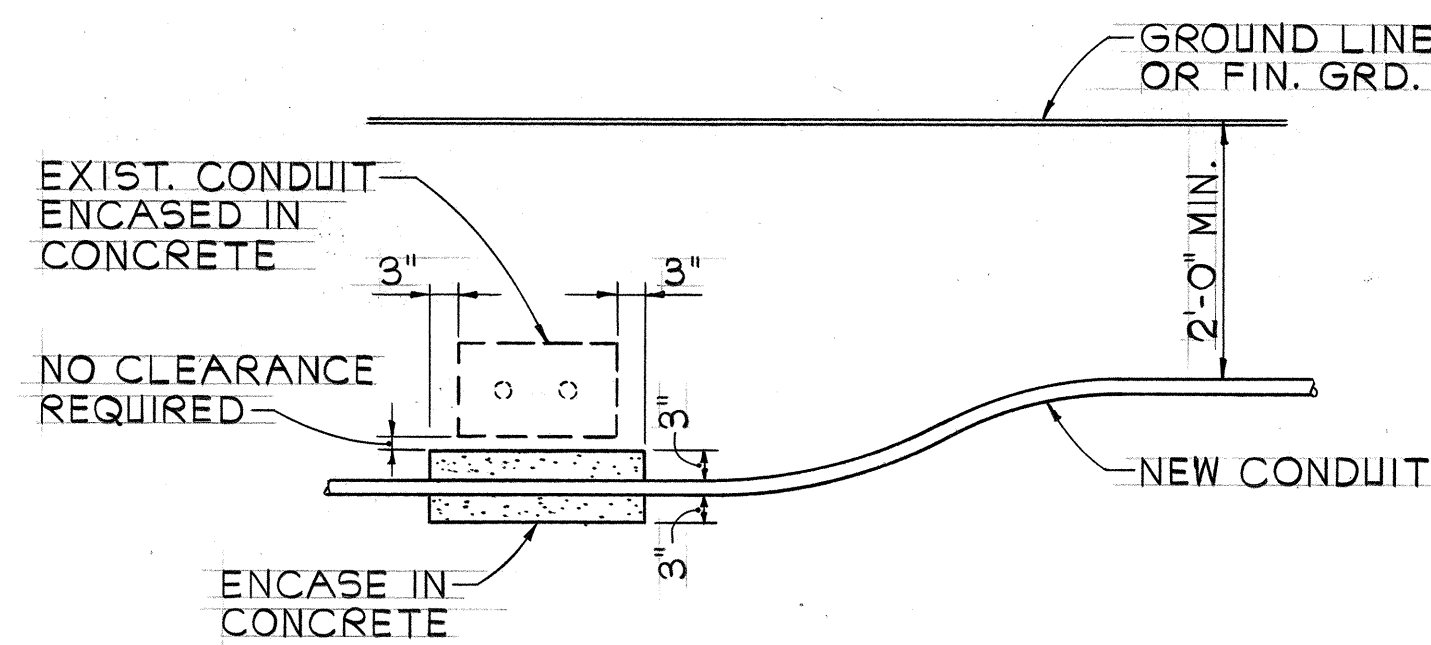


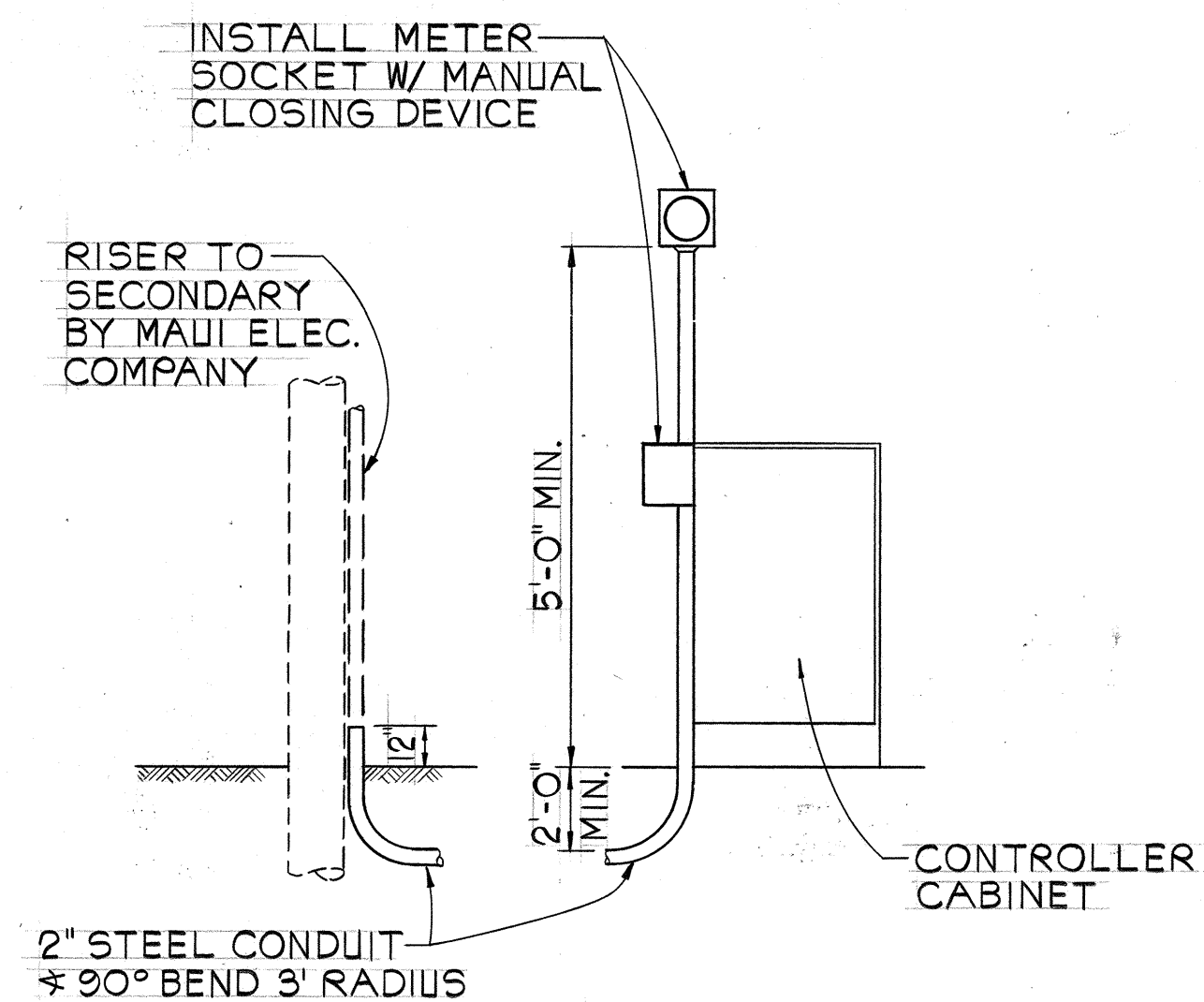
FED. ROAD DIST. NO.	STATE	FED. AID PROJ. NO.	FISCAL YEAR	SHEET NO.	TOTAL SHEETS
HAWAII	HAW.	FAU MG-0900(16)	1982	15	32



TYPICAL PAVEMENT SECTION
SCALE: 3/8" = 1'-0"



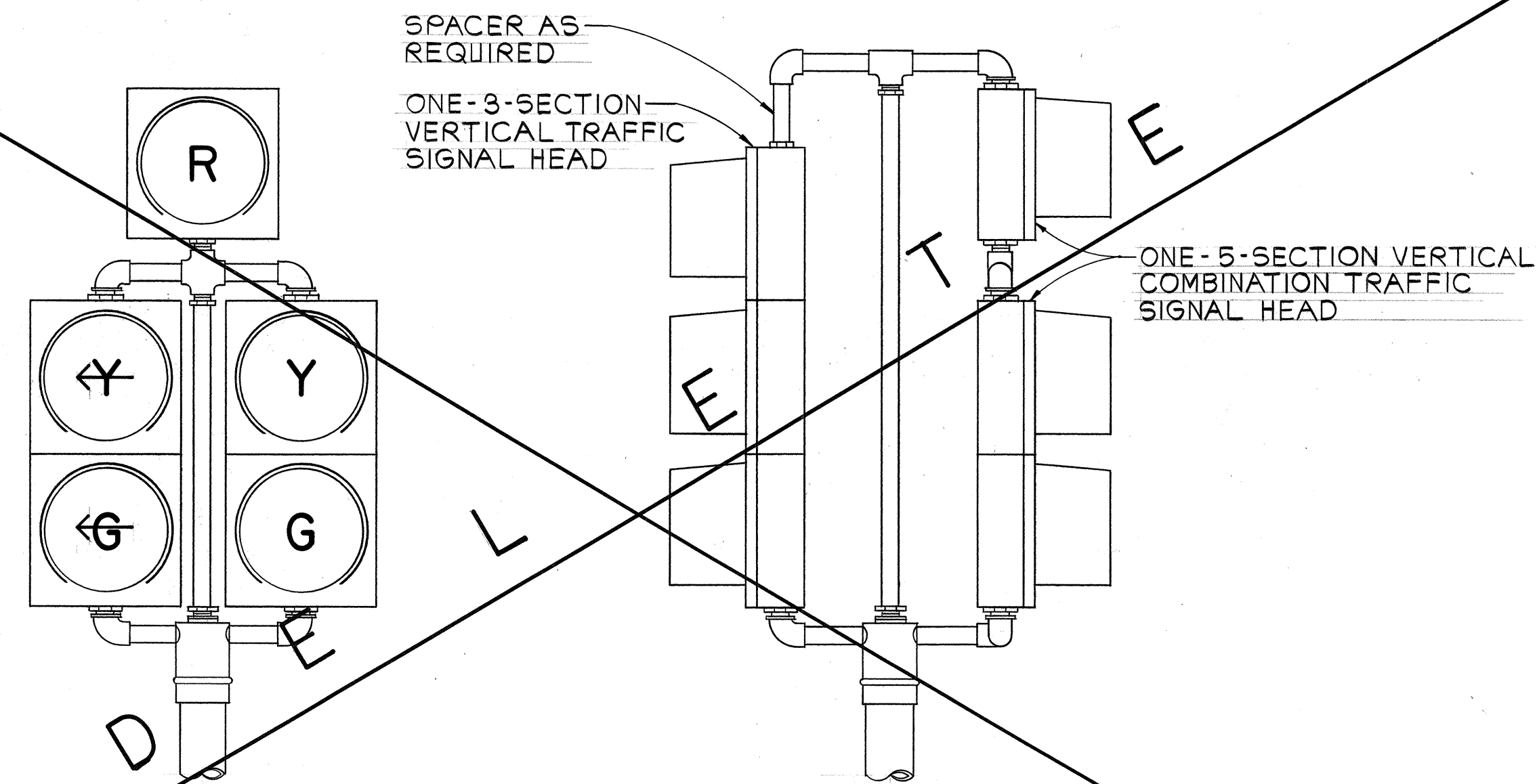
CONDUIT BY-PASS DETAIL
NOT TO SCALE



NOTES:

1. MAUI ELECTRIC CO. SHALL FURNISH AND INSTALL CABLE BETWEEN SECONDARY AND METER SOCKET.
2. CONTRACTOR SHALL MAKE ALL ELECTRICAL CONNECTIONS TO CONTROLLER, PROVIDE BREAKER AND GROUND.
3. CONTRACTOR SHALL PROVIDE MAUI ELECTRIC CO. ONE WEEK ADVANCE NOTICE FOR ANY WORK BY MAUI ELECTRIC CO.

ELECTRICAL SERVICE DETAIL
NOT TO SCALE



5-SECTION VERTICAL COMBINATION TRAFFIC SIGNAL ASSEMBLY DETAILS
NOT TO SCALE

ORIGINAL PLAN	DATE
SURVEY PLOTTED BY	
DESIGNED BY	
NOTE BOOK	
QUANTITIES BY	
CHECKED BY	
No.	



THIS WORK WAS PREPARED BY ME
OR UNDER MY SUPERVISION
Theodore S. Kawahara
Signature

STATE OF HAWAII
DEPARTMENT OF TRANSPORTATION
HIGHWAYS DIVISION

MISCELLANEOUS DETAILS

KAAHUMANU AVENUE
TRAFFIC SIGNAL
IMPROVEMENTS
FAU PROJECT NO. MG-0900(16)

SCALE: AS SHOWN
DATE: 4-27-82
SHEET NO. 1 OF 1 SHEETS