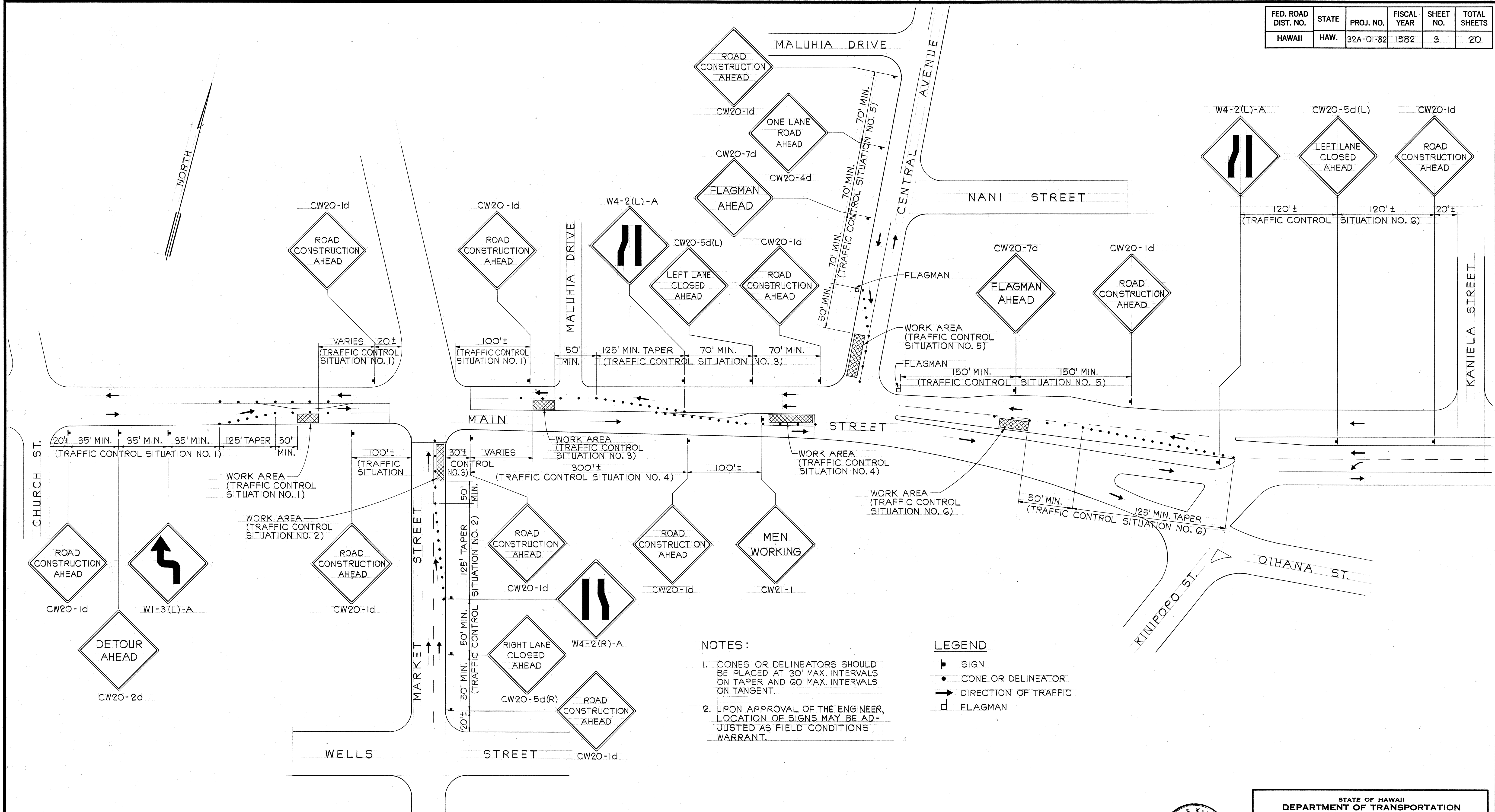
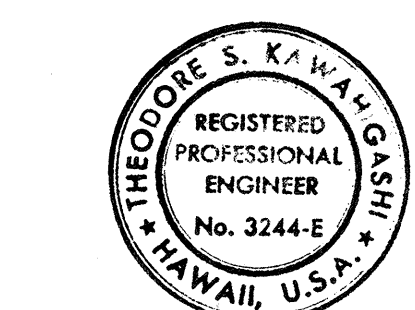


FED. ROAD DIST. NO.	STATE	PROJ. NO.	FISCAL YEAR	SHEET NO.	TOTAL SHEETS
HAWAII	HAW.	32A-01-82	1982	3	20

ORIGINAL PLAN	DATE
DESIGNED BY	
TRACED BY	
NOTE BOOK	
QUANTITIES BY	
CHECKED BY	



TRAFFIC CONTROL PLAN
NOT TO SCALE



THIS WORK WAS PREPARED BY ME
OR UNDER MY SUPERVISION
Theodore S. Kawahigashi
Signature

STATE OF HAWAII
DEPARTMENT OF TRANSPORTATION
HIGHWAYS DIVISION

TRAFFIC CONTROL PLAN

MAIN STREET
TRAFFIC SIGNALS AT
CENTRAL AVE. AND AT MARKET ST.
PROJECT NO. 32A-01-82
NOT TO SCALE
DATE: 11-20-81

SHEET NO. 1 OF 1 SHEETS