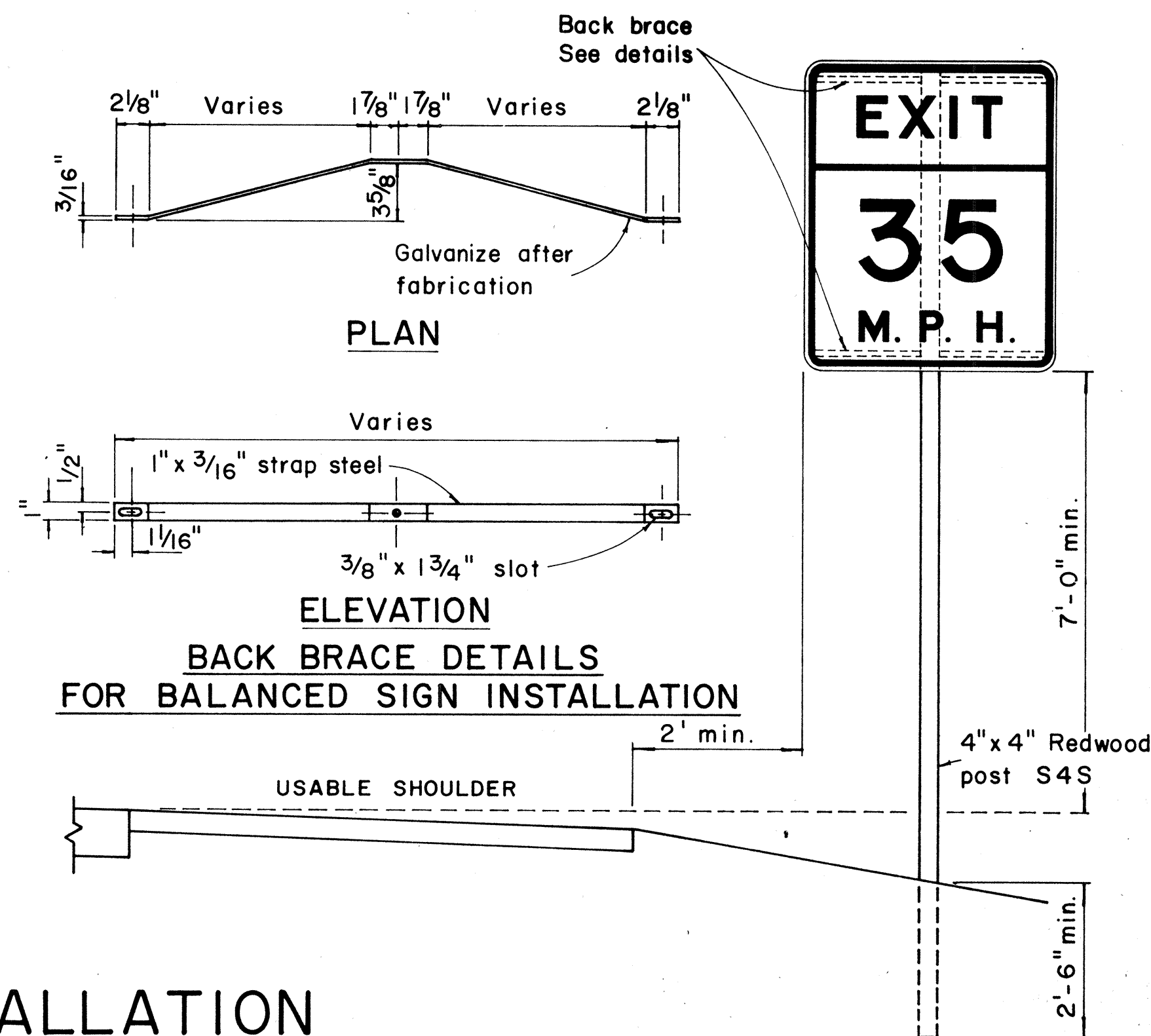
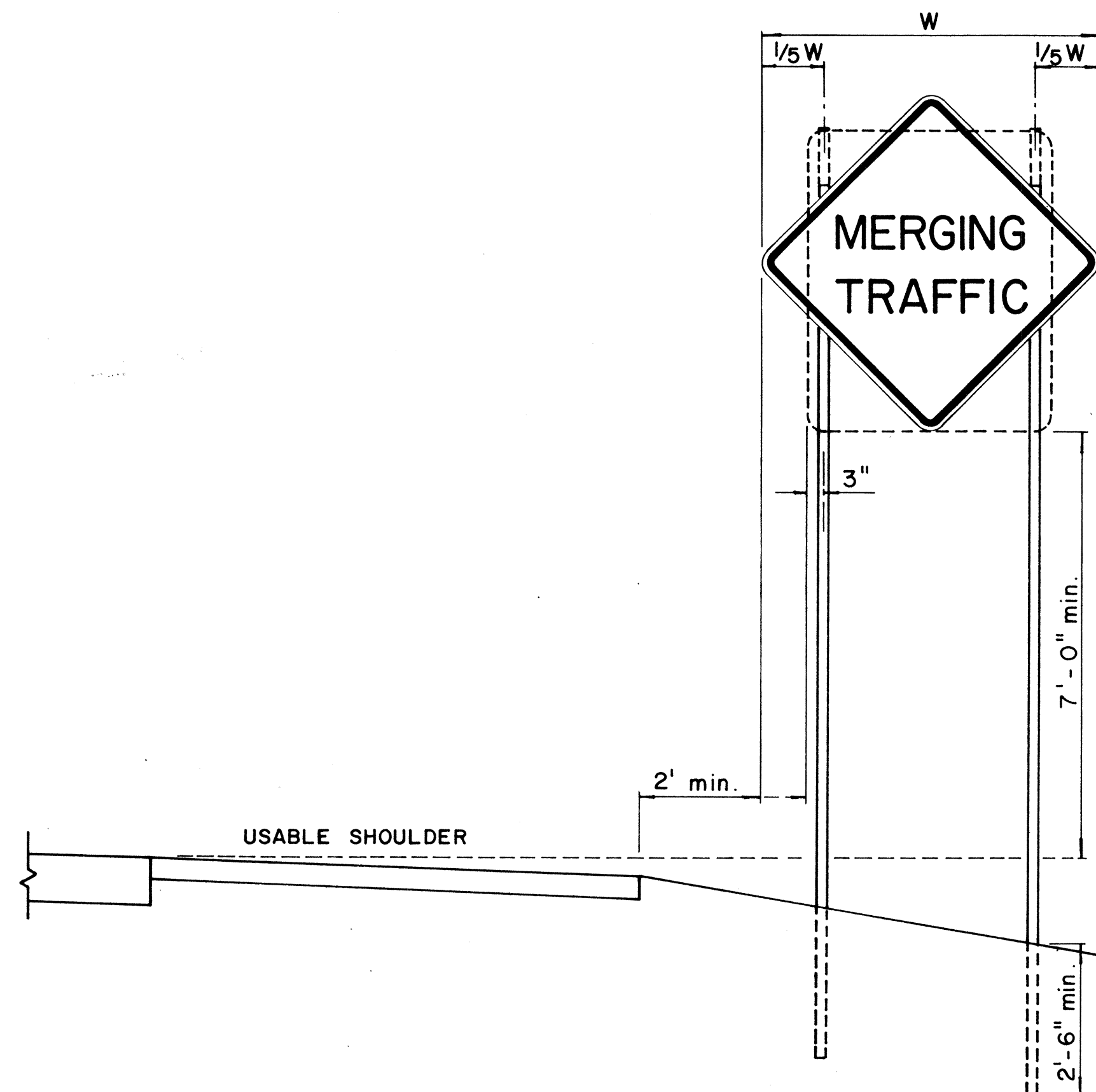
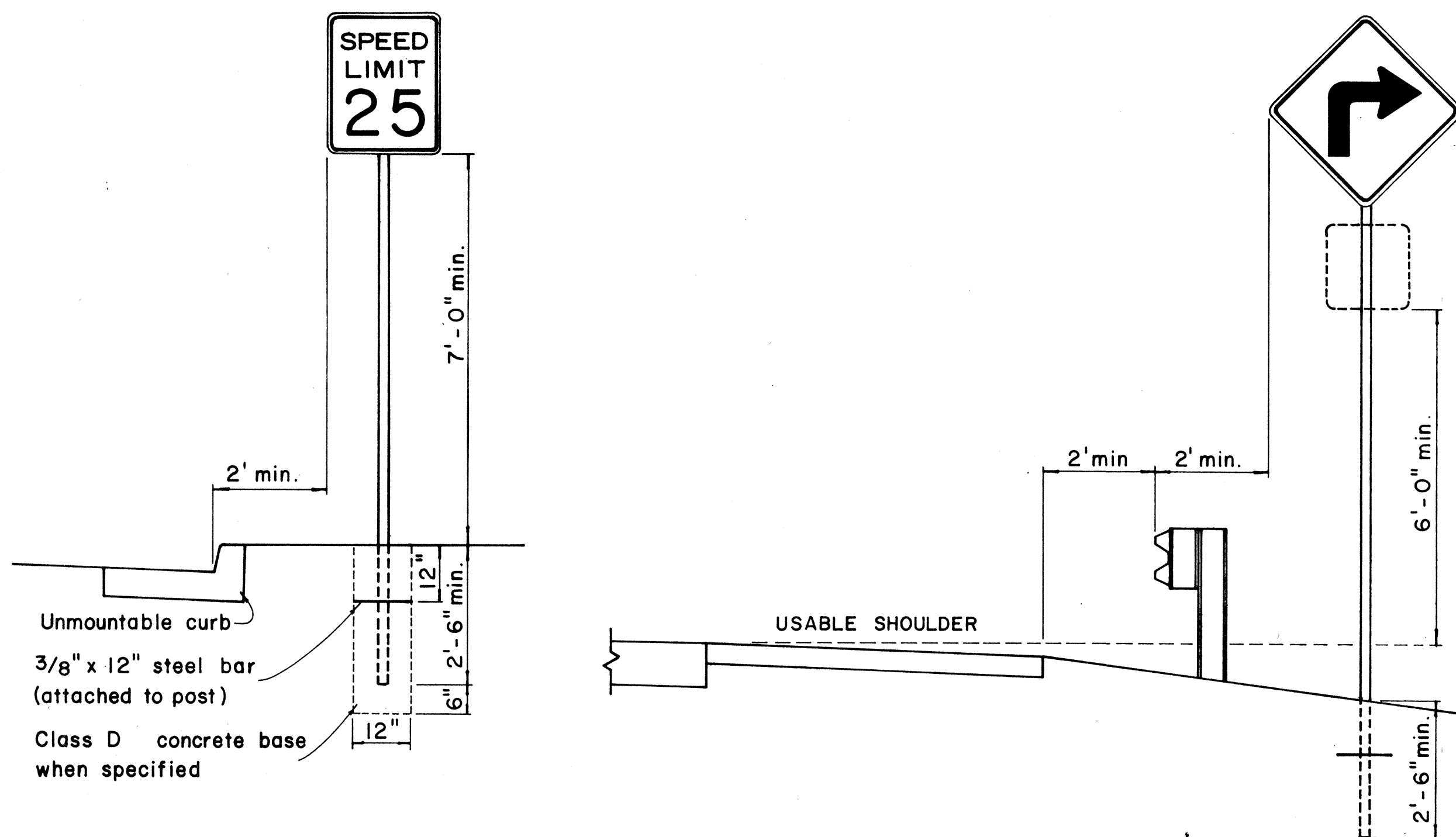
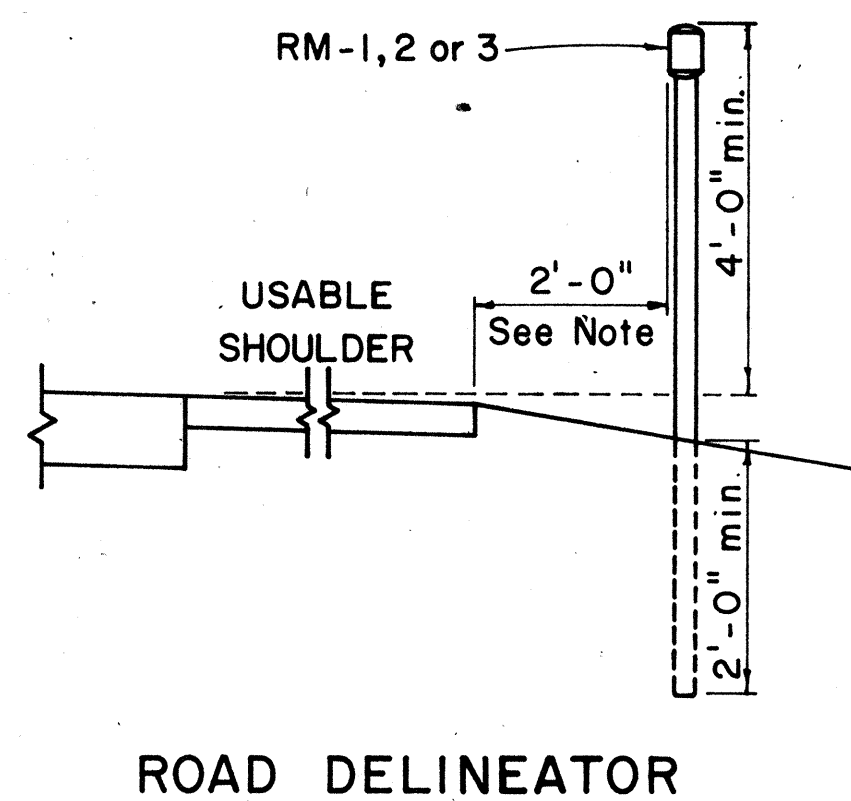


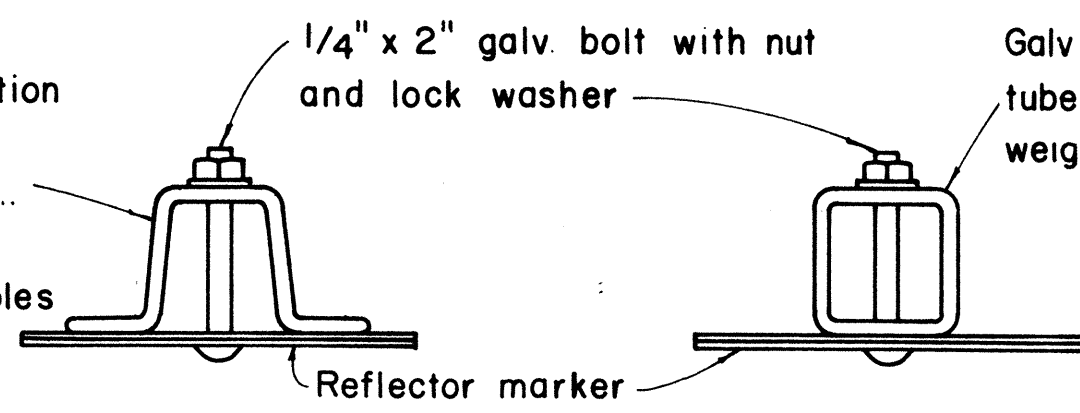
FED. ROAD DIST. NO.	STATE	PROJ. NO.	FISCAL YEAR	SHEET NO.	TOTAL SHEETS
HAWAII	HAW.	32A-01-70	1975	7	7



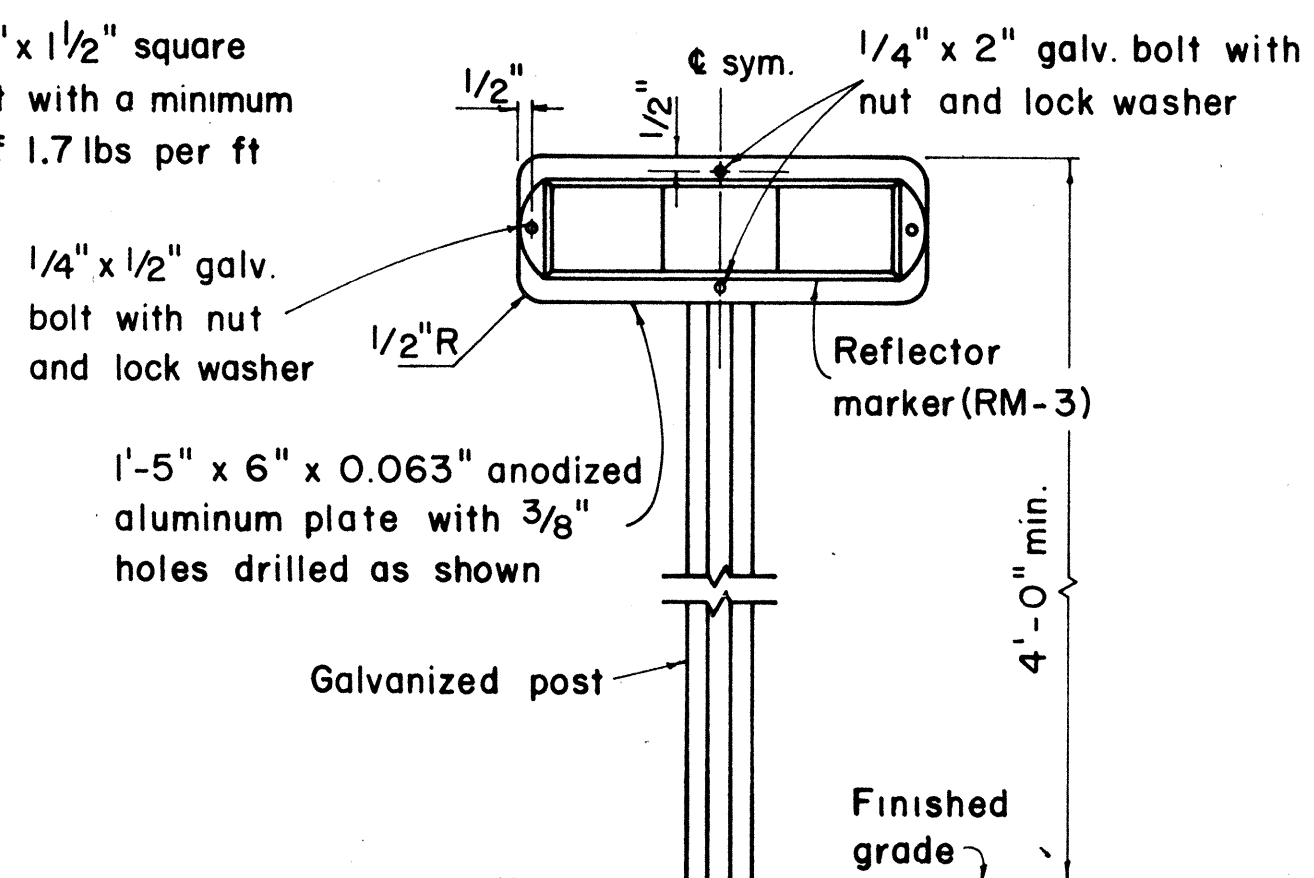
HEIGHT AND LATERAL LOCATION OF SIGNS - TYPICAL INSTALLATION



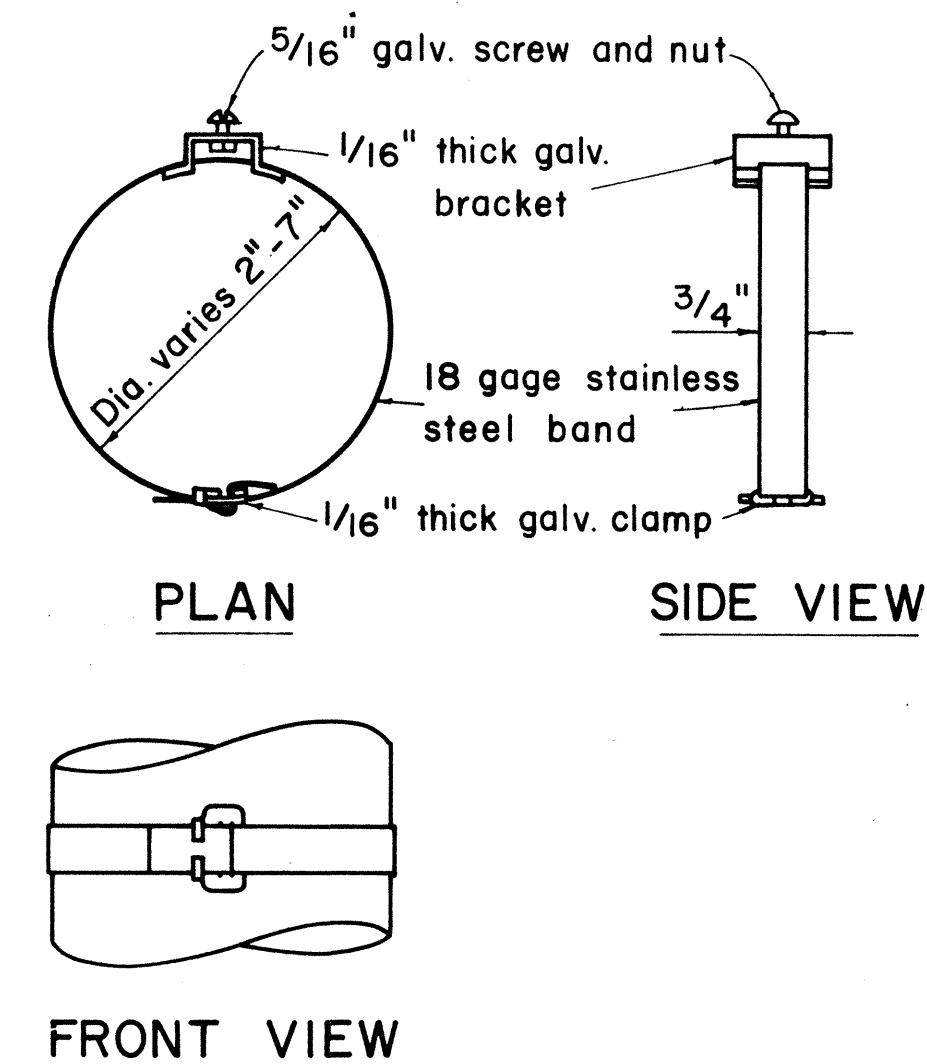
Galv. flanged channel
1/8" x 3 1/16" rolled section
post with a minimum
weight of 2 lbs. per ft.
Upper 2 ft. shall have
a single row of 3/8" holes
centered in the web at
1" o.c.



TYPICAL SECTION OF ROAD DELINEATOR



TYPICAL DETAIL
HORIZONTAL REFLECTOR MARKER
RM-3H



TYPICAL BAND BRACKET FOR
MOUNTING TRAFFIC SIGNS

GENERAL NOTES:

- Sign posts shall be 2" galv. standard pipe or 2" x 2" galv. sq. tube post.
- Signs 48" and wider or larger than 10 sq. ft. in area shall be mounted on two 2" galv. standard pipe or two 2" x 2" galv. sq. tube post or 4" x 4" redwood post S4S.
- Signs shall be attached to post with 5/16" galv. bolts with nuts and 7/8" x 0.06 stainless steel washers with neoprene rubber gasket.
- Sign posts shall extend 3 1/2" above sign where required for City and County street name signs.
- Reflector markers RM-1, 2, 3 shall be glass sphere reflector markers with 4" x 5" reflector units (as shown) or plastic prismatic reflector markers with 3" diameter reflector units.
- Clearance markers (RM-3, RM-4) shall be installed with the edge of the marker in line with the inner edge of the obstruction.
- (R) or (L) indicates right or left and shall be as shown on the plans.

APPROVAL RECOMMENDED:
E. J. Tanaka
TRAFFIC ENGINEER

12/22/69
DATE

APPROVED:
[Signature]
ASSISTANT CHIEF, ENGINEERING

12-20-69
DATE

NO.	REVISION	APPROVED BY	DATE

STATE OF HAWAII
DEPARTMENT OF TRANSPORTATION
HIGHWAYS DIVISION

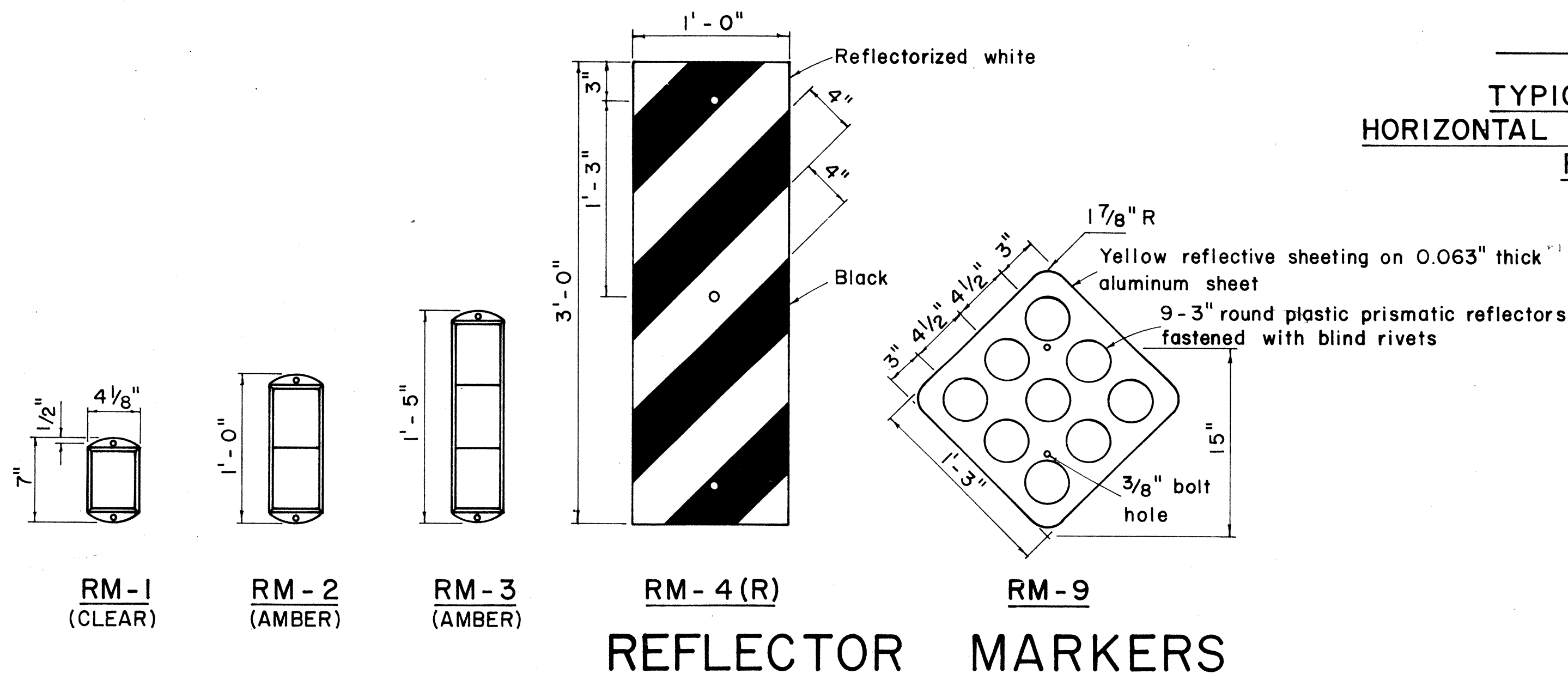
STANDARD DETAILS
MISCELLANEOUS SIGN DETAILS

Not to scale

March, 1968

SHEET No. 7 OF 7 SHEETS DT 100

DATE	DESIGNED BY	CHECKED BY
DATE	DESIGNED BY	CHECKED BY
DATE	DESIGNED BY	CHECKED BY



REFLECTOR MARKERS