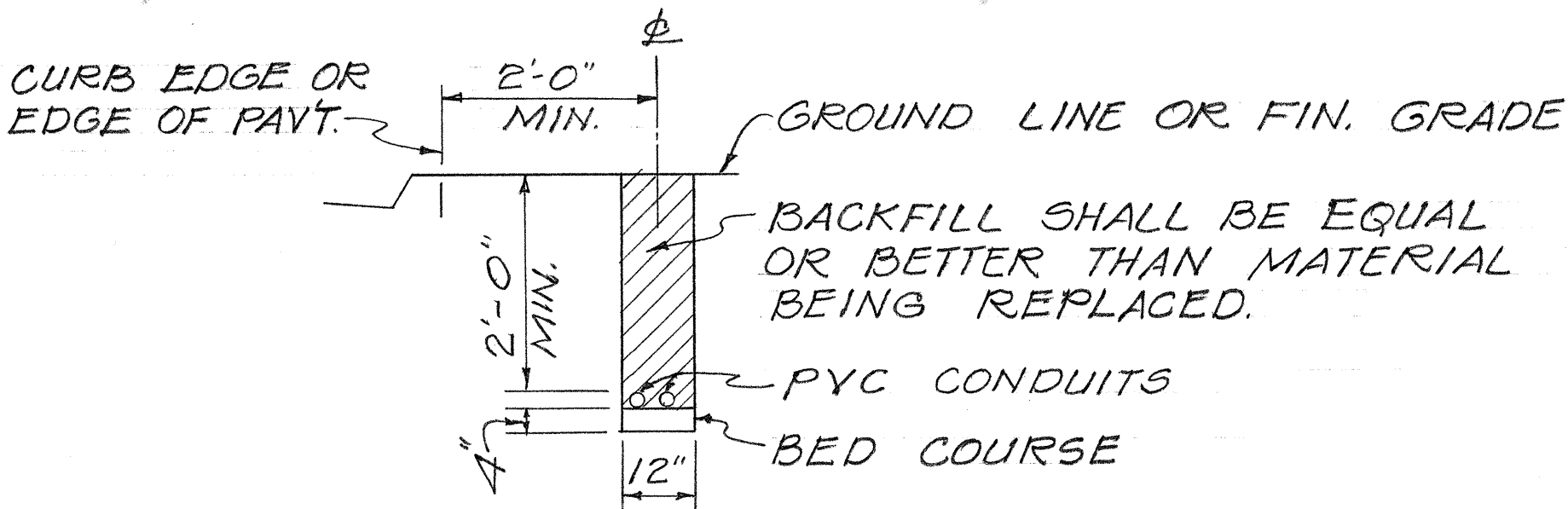


FED. ROAD DIST. NO.	STATE	PROJ. NO.	FISCAL YEAR	SHEET NO.	TOTAL SHEETS
HAWAII	HAW.	32A-01-76M	1976	0	11

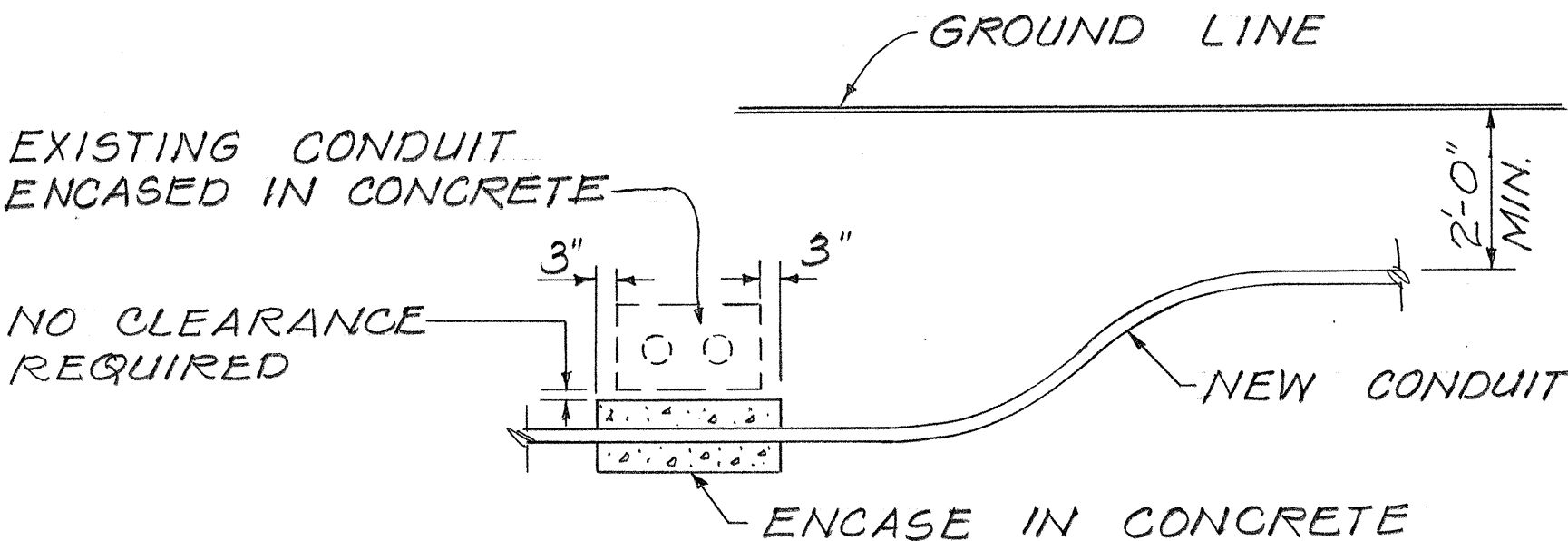
GENERAL NOTES

1. THE EXACT LOCATION OF TRAFFIC SIGNAL STANDARDS MAST ARMS, PULLBOXES, CONTROLLER BASE, CONDUITS AND LOOP DETECTORS SHALL BE DETERMINED IN THE FIELD BY THE ENGINEER.
2. ALL NEW CONDUITS UNDER ROADWAY (INCLUDING DRIVEWAYS) SHALL BE PVC SCHEDULE 80. CONTRACTOR SHALL HAVE THE OPTION OF USING PVC SCHEDULE 40 FOR NEW CONDUITS NOT UNDER ROADWAY.
3. LOCATION OF EXISTING UNDERGROUND STRUCTURES SUCH AS CULVERTS, PIPELINES, CONDUITS, CABLES, ETC., AS SHOWN ON THE PLANS ARE APPROXIMATE ONLY. OTHER EXISTING UTILITIES MAY NOT BE SHOWN. THE CONTRACTOR SHALL CHECK & VERIFY THE LOCATION OF SAME.
4. ALL CONDUITS & PULLBOXES SHALL BE INSTALLED PRIOR TO ROADWAY RESURFACING.



CONDUIT DETAIL

NOT TO SCALE



CONDUIT BY-PASS DETAIL

NOT TO SCALE

STATE OF HAWAII DEPARTMENT OF TRANSPORTATION HIGHWAYS DIVISION	
MISCELLANEOUS DETAILS	
KAAHUMANU AVE. RESURFACING	
WAILUKU TO KAHULUI	
PROJECT NO. 32A-01-76M	
SCALE : AS NOTED	AUG. 1975
SHEET No. 1 OF 1 SHEETS	

ORIGINAL PLAN	SURVEY PLOTTED BY	DATE
NOTE BOOK	DRAWN BY	
	TRACED BY	
	CHECKED BY	
	QUANTITIES BY	
	CHECKED BY	