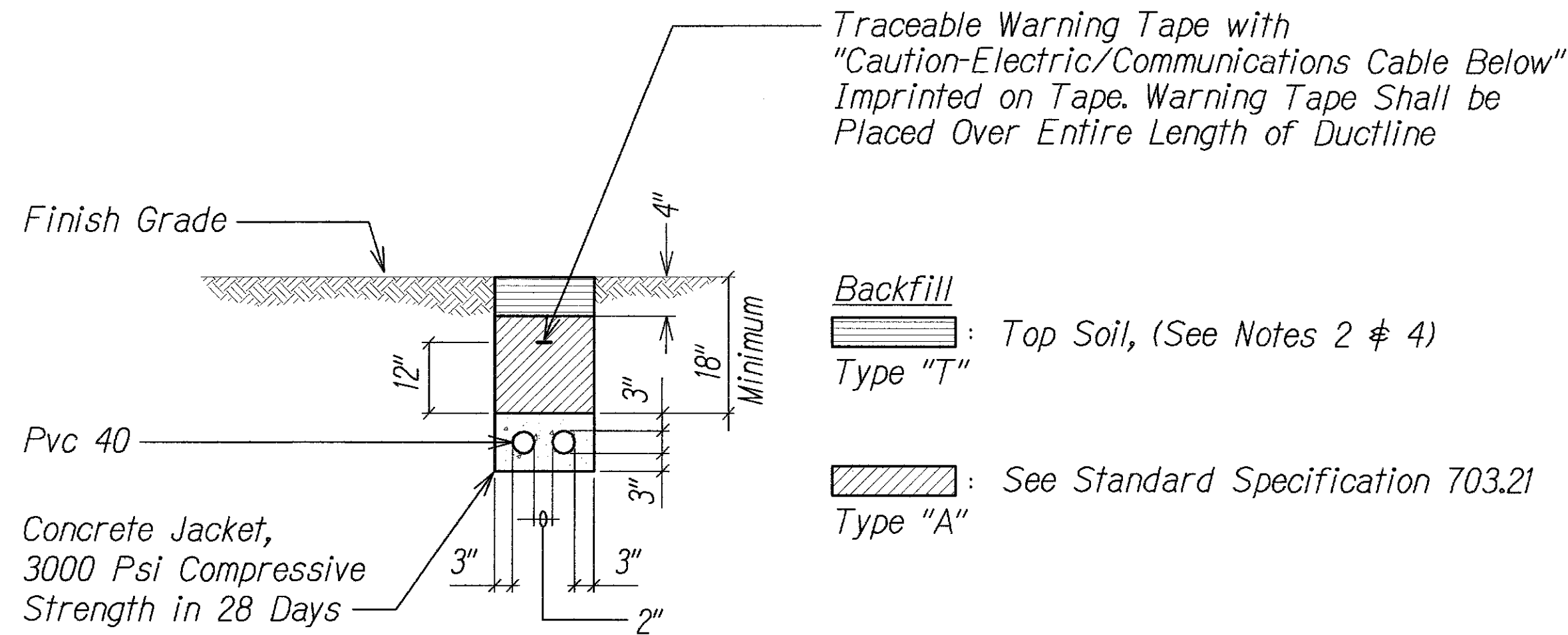


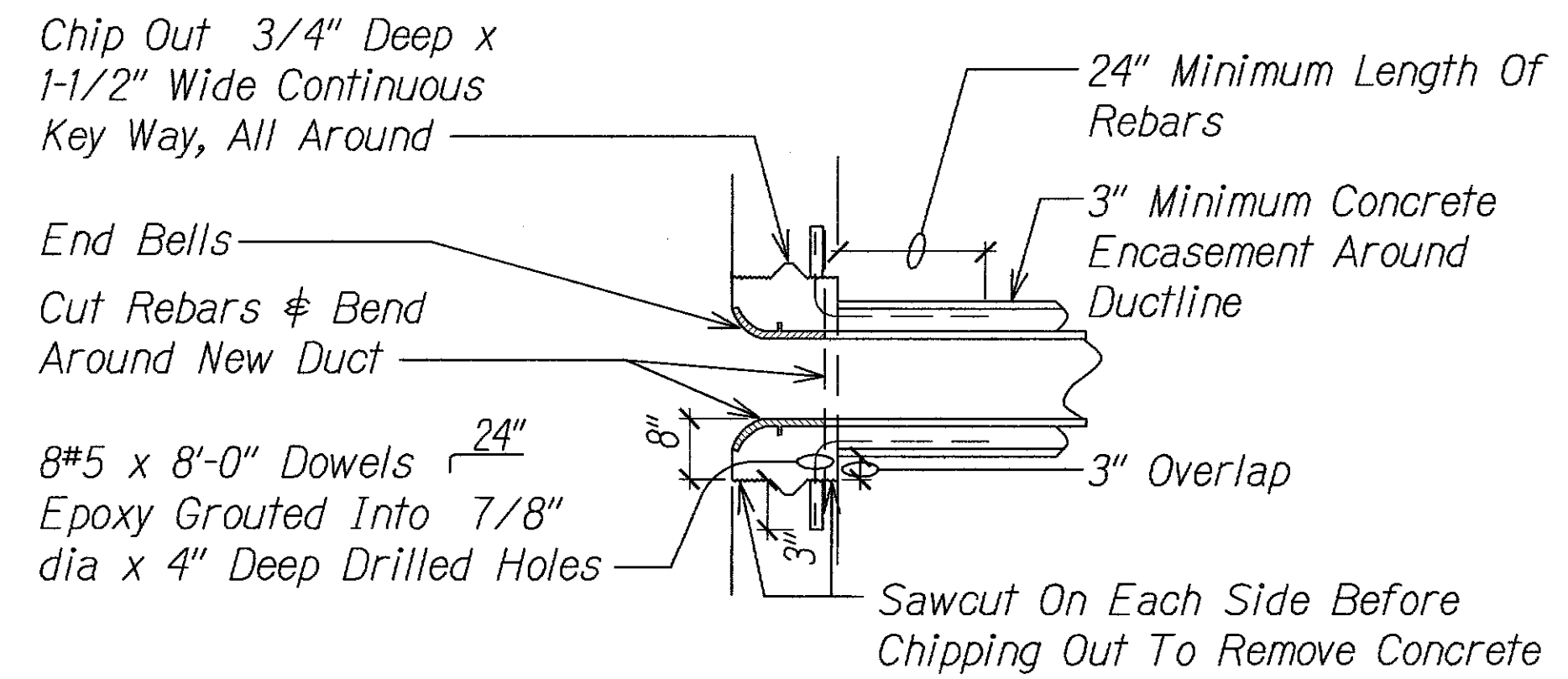
FED. ROAD DIST. NO.	STATE	PROJ. NO.	FISCAL YEAR	SHEET NO.	TOTAL SHEETS
HAWAII	HAW.	31A-02-17	2018	28	29



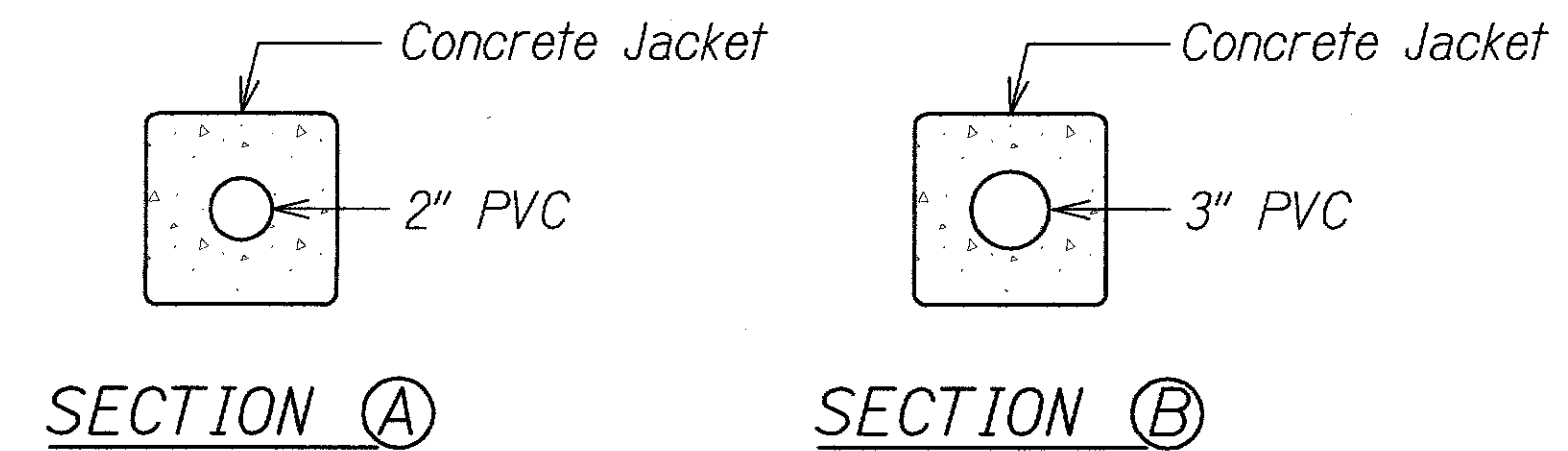
A
E-003 E-003 NTS
TYPICAL DUCT SECTION FOR UNPAVED AREA

NOTES:

1. Provide 2" Separation Between Ducts of Same System and 3" Between Ducts of Different Systems.
2. Where Trench Encounters Grass or Landscaping, Provide 4" Top Soil After Trench is Backfilled, and Restore Landscaping to Match Existing Adjacent Areas.
3. See Duct Section Details for Conduit Arrangement.
4. Where Trench Encounters Existing Concrete Sidewalk, Sidewalk Shall be Demolished. Backfill, Compact and Replace Sidewalk to Match Existing. Omit Top Soil in Trench Restoration and Provide Minimum 4" Thick Concrete Sidewalk to Match Original Finish. Replace Entire Width of Sidewalk so that there is No Evidence that a Duct was Installed Below the Sidewalk.
5. See State Highway Standard Plan D-15 for Concrete Sidewalk Details.

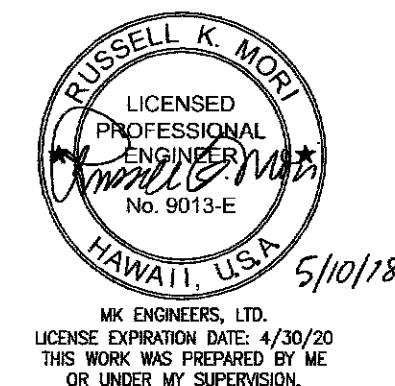


B
E-003 E-003 NTS
DETAIL OF TYPICAL DUCT ENTRY INTO MANHOLE/HANDHOLE



DUCT SECTION DETAILS
NTS

ORIGINAL PLAN	SURVEY PLOTTED BY	DATE
NOTE BOOK	DRAWN BY	
	DESIGNED BY	
	QUANTITIES BY	
	CHECKED BY	



STATE OF HAWAII
DEPARTMENT OF TRANSPORTATION
HIGHWAYS DIVISION

DUCT SECTION DETAILS

*Piilani Highway Improvements
Vicinity of Kulanihakai Street
Project No. 31A-02-17*

Scale: No Scale Date: Mar 2018

SHEET No. E-003 OF 04 SHEETS