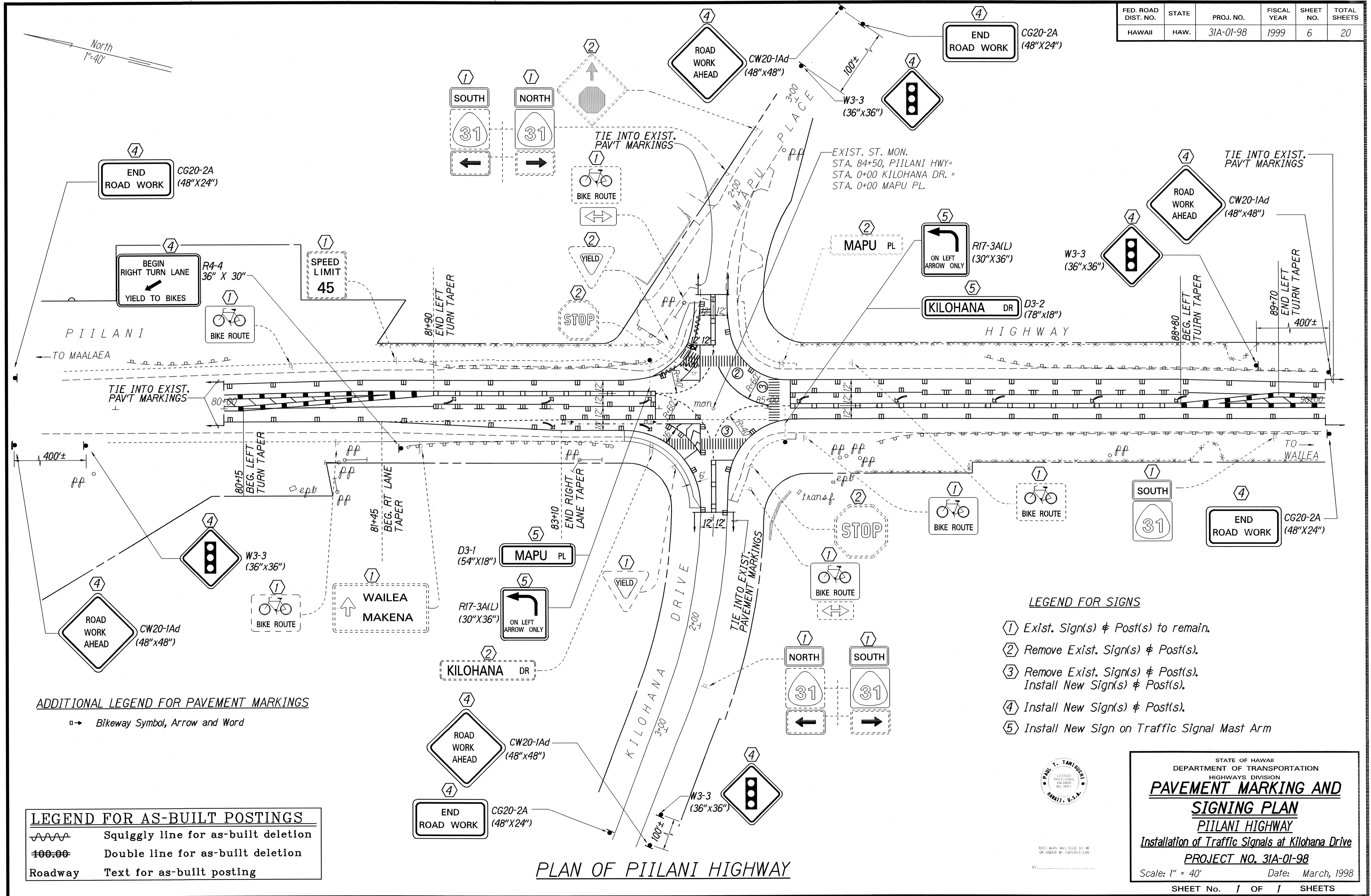


FED. ROAD DIST. NO.	STATE	PROJ. NO.	FISCAL YEAR	SHEET NO.	TOTAL SHEETS
HAWAII	HAW.	31A-01-98	1999	6	20



ADDITIONAL LEGEND FOR PAVEMENT MARKINGS

□ → Bikeway Symbol, Arrow and Word

LEGEND FOR AS-BUILT POSTINGS

- ~~~~~ Squiggly line for as-built deletion
- == Double line for as-built deletion
- Roadway Text for as-built posting

LEGEND FOR SIGNS

- ① Exist. Sign(s) & Post(s) to remain.
- ② Remove Exist. Sign(s) & Post(s).
- ③ Remove Exist. Sign(s) & Post(s). Install New Sign(s) & Post(s).
- ④ Install New Sign(s) & Post(s).
- ⑤ Install New Sign on Traffic Signal Mast Arm

SURVEY PROVIDED BY: DATE: 02/98
 DRAWN BY: DATE: 02/98
 DESIGNED BY: DATE: 02/98
 QUANTITIES BY: DATE: 02/98
 CHECKED BY: DATE: 02/98

STATE OF HAWAII
 DEPARTMENT OF TRANSPORTATION
 HIGHWAYS DIVISION
PAVEMENT MARKING AND SIGNING PLAN
PIILANI HIGHWAY
 Installation of Traffic Signals at Kilohana Drive
 PROJECT NO. 31A-01-98
 Scale: 1" = 40' Date: March, 1998
 SHEET No. 1 OF 1 SHEETS

PLAN OF PIILANI HIGHWAY