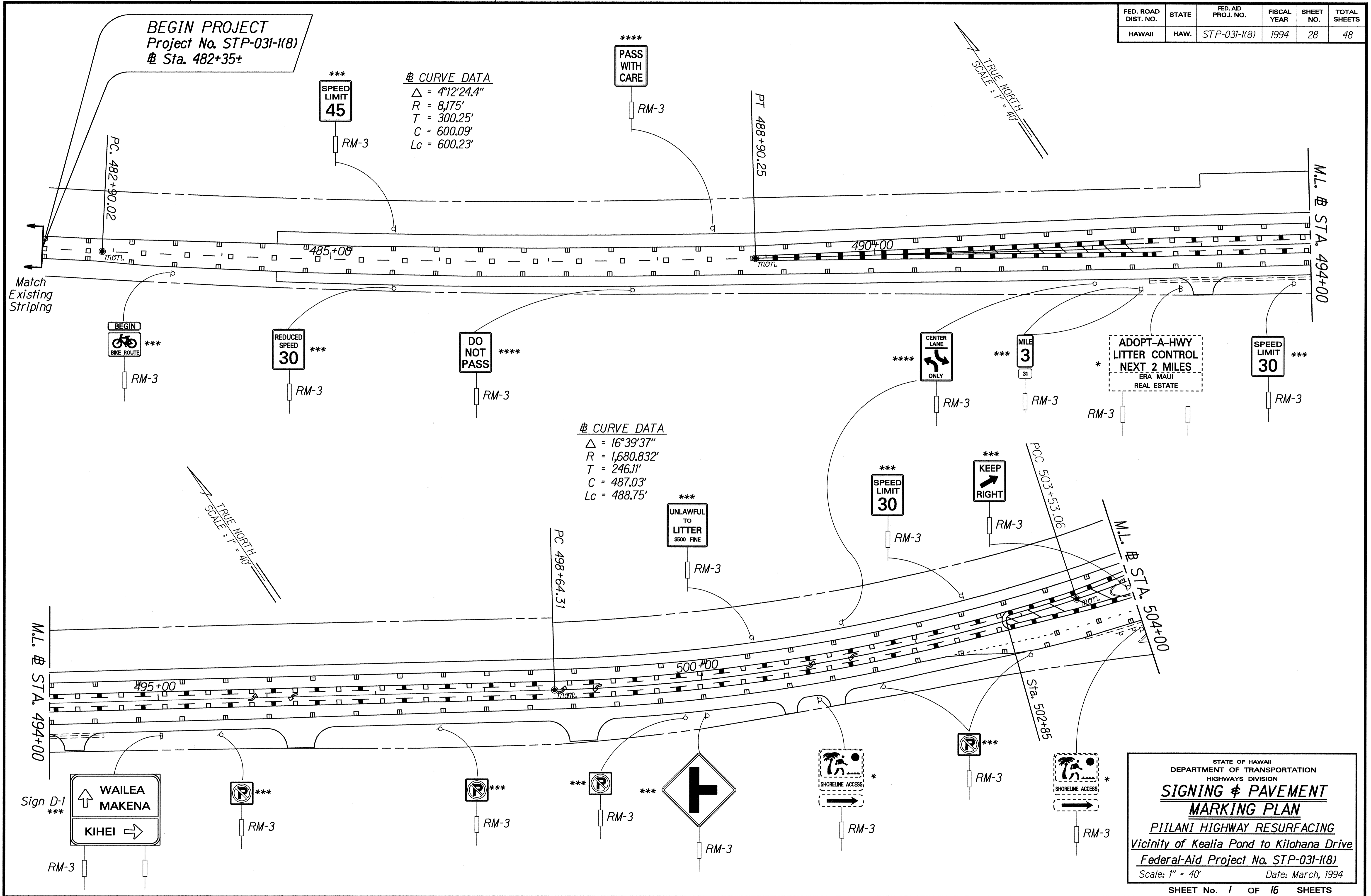


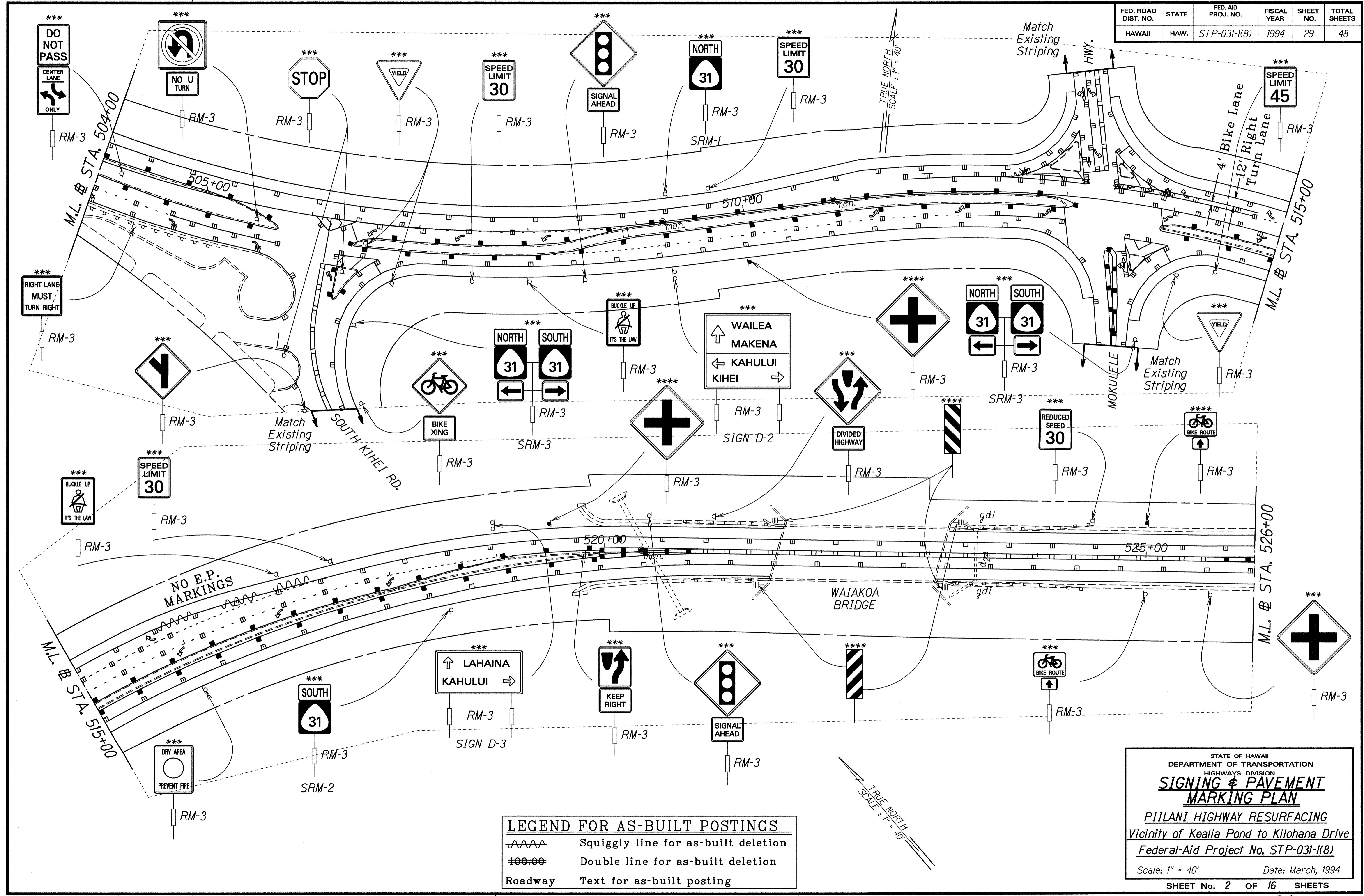
FED. ROAD DIST. NO.	STATE	FED. AID PROJ. NO.	FISCAL YEAR	SHEET NO.	TOTAL SHEETS
HAWAII	HAW.	STP-031-1(8)	1994	28	48



DATE: 11-28-94
 SURVEY PLOTTED BY: [blank]
 DRAWN BY: J. GARCIA
 CHECKED BY: C. ROBERTS
 ORIGINAL PLAN: [blank]
 NOTE BOOK: [blank]
 QUANTITIES BY: [blank]
 CHECKED BY: [blank]

STATE OF HAWAII
 DEPARTMENT OF TRANSPORTATION
 HIGHWAYS DIVISION
SIGNING & PAVEMENT MARKING PLAN
 PIILANI HIGHWAY RESURFACING
 Vicinity of Kealia Pond to Kilohana Drive
 Federal-Aid Project No. STP-031-1(8)
 Scale: 1" = 40' Date: March, 1994

FED. ROAD DIST. NO.	STATE	FED. AID PROJ. NO.	FISCAL YEAR	SHEET NO.	TOTAL SHEETS
HAWAII	HAW.	STP-031-1(8)	1994	29	48

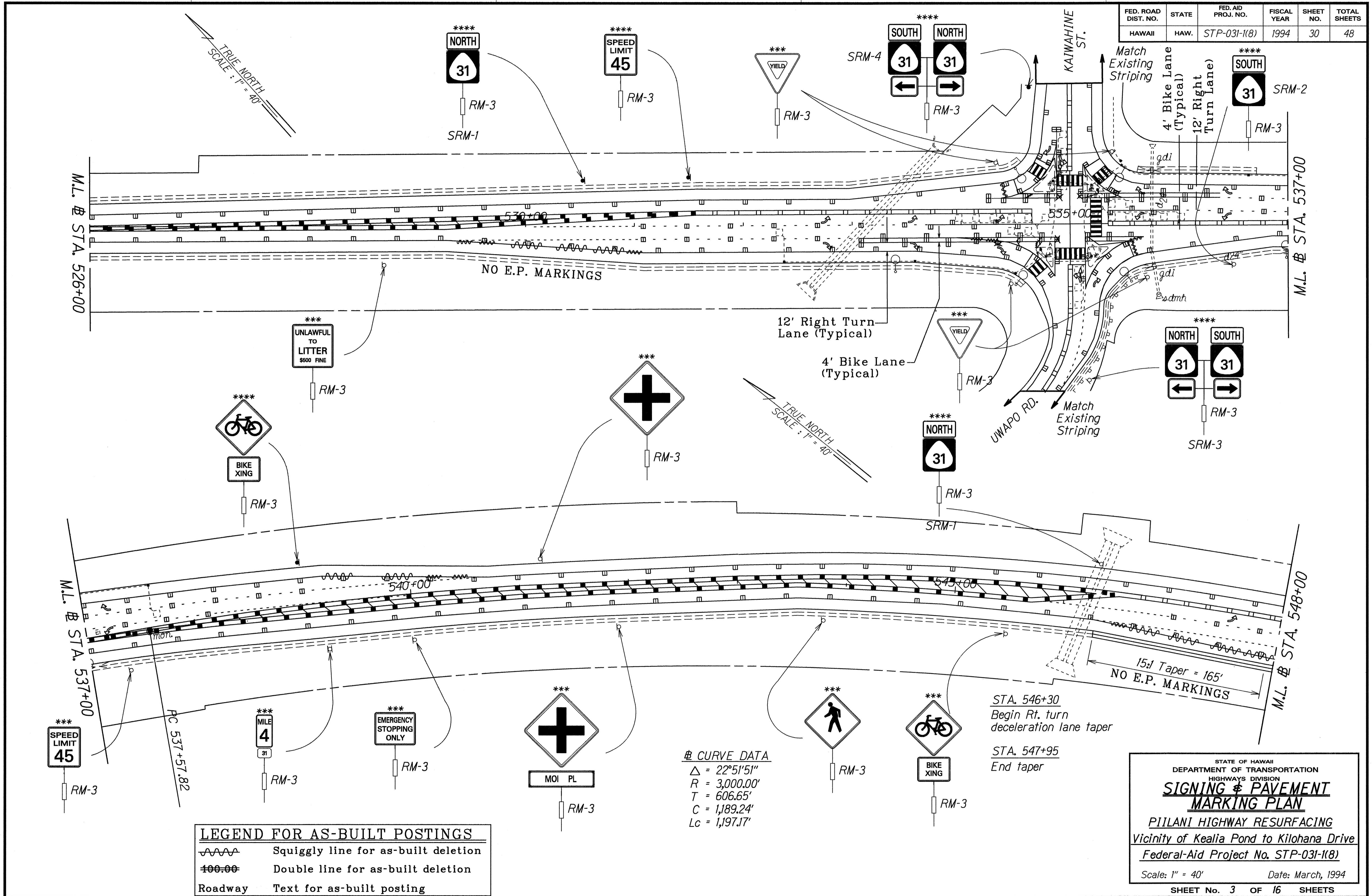


SURVEY PROVIDED BY DATE: 12-27-94
 DRAWN BY: G. Uehara
 TRACED BY:
 DESIGNED BY: C. DeGross
 QUANTITIES BY:
 CHECKED BY:

	Squiggly line for as-built deletion
	Double line for as-built deletion
Roadway	Text for as-built posting

STATE OF HAWAII
 DEPARTMENT OF TRANSPORTATION
 HIGHWAYS DIVISION
SIGNING & PAVEMENT MARKING PLAN
 PIILANI HIGHWAY RESURFACING
 Vicinity of Kealia Pond to Kilohana Drive
 Federal-Aid Project No. STP-031-1(8)
 Scale: 1" = 40' Date: March, 1994
 SHEET No. 2 OF 16 SHEETS

FED. ROAD DIST. NO.	STATE	FED. AID PROJ. NO.	FISCAL YEAR	SHEET NO.	TOTAL SHEETS
HAWAII	HAW.	STP-031-1(8)	1994	30	48



LEGEND FOR AS-BUILT POSTINGS

	Squiggly line for as-built deletion
	Double line for as-built deletion
Roadway	Text for as-built posting

CURVE DATA
 $\Delta = 22^{\circ}51'51''$
 $R = 3,000.00'$
 $T = 606.65'$
 $C = 1,189.24'$
 $Lc = 1,197.17'$

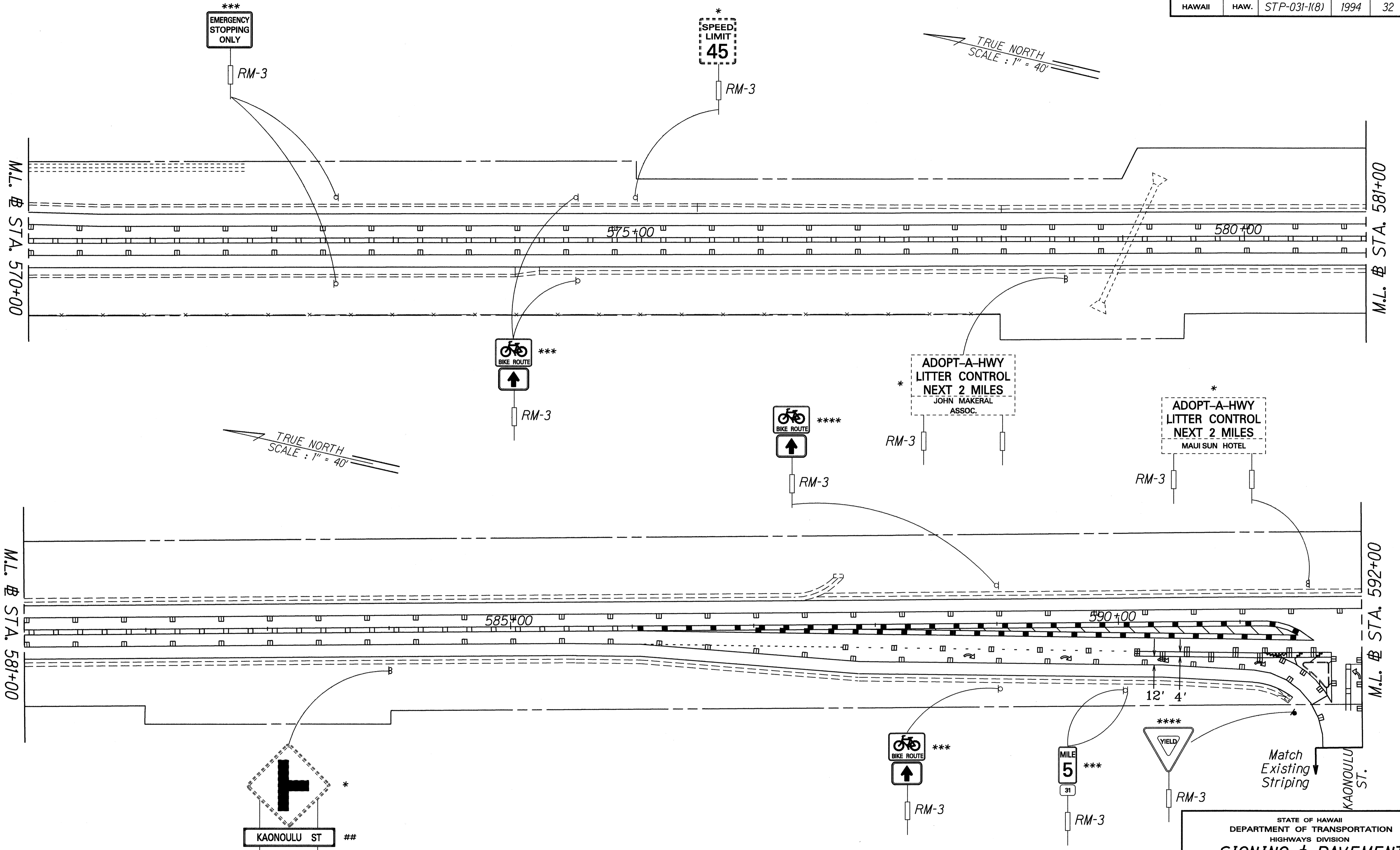
STA. 546+30
Begin Rt. turn deceleration lane taper

 STA. 547+95
End taper

STATE OF HAWAII
 DEPARTMENT OF TRANSPORTATION
 HIGHWAYS DIVISION
SIGNING & PAVEMENT MARKING PLAN
 PIILANI HIGHWAY RESURFACING
 Vicinity of Kealia Pond to Kilohana Drive
 Federal-Aid Project No. STP-031-1(8)
 Scale: 1" = 40' Date: March, 1994
 SHEET No. 3 OF 16 SHEETS

ORIGINAL PLAN DATE: 12-21-92
 SURVEY PLATTED BY: G. Linahala
 DRAWN BY: G. Linahala
 CHECKED BY: C. Berger
 QUANTITIES BY: G. Linahala
 DESIGNED BY: G. Linahala

FED. ROAD DIST. NO.	STATE	FED. AID PROJ. NO.	FISCAL YEAR	SHEET NO.	TOTAL SHEETS
HAWAII	HAW.	STP-031-1(8)	1994	32	48

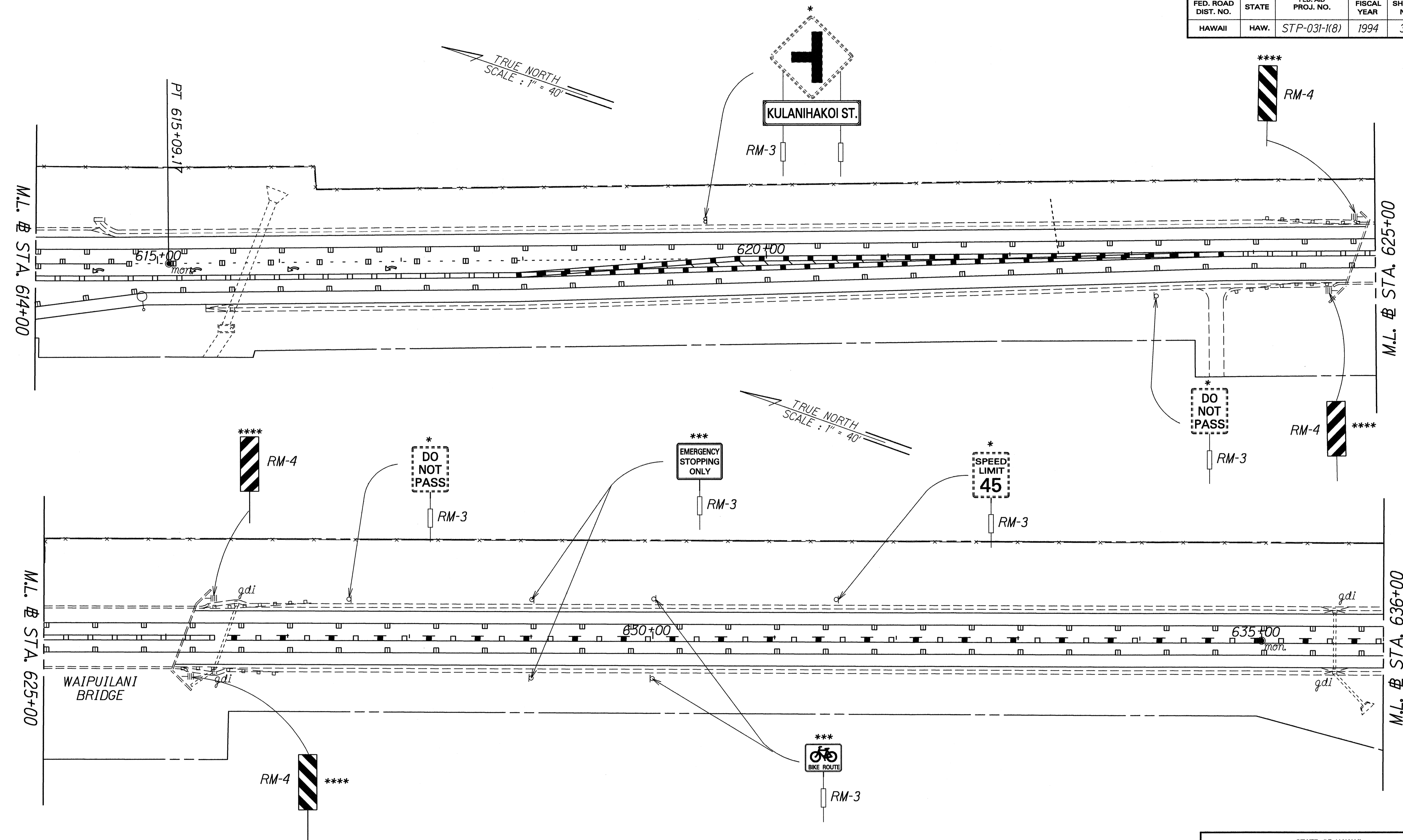


SURVEY PLOTTED BY: DATE: 12-21-94
 DRAWN BY: J. G. GILFILLAN
 CHECKED BY: C. F. B. B. B. B.
 ORIGINAL PLAN: 2/11/95
 NOTE BOOK: 2/11/95
 QUANTITIES BY: 2/11/95
 CHECKED BY: 2/11/95

LEGEND FOR AS-BUILT POSTINGS	
	Squiggly line for as-built deletion
	Double line for as-built deletion
Roadway	Text for as-built posting

STATE OF HAWAII
 DEPARTMENT OF TRANSPORTATION
 HIGHWAYS DIVISION
SIGNING & PAVEMENT MARKING PLAN
 PIILANI HIGHWAY RESURFACING
 Vicinity of Kealia Pond to Kilohana Drive
 Federal-Aid Project No. STP-031-1(8)
 Scale: 1" = 40' Date: March, 1994
 SHEET No. 5 OF 16 SHEETS

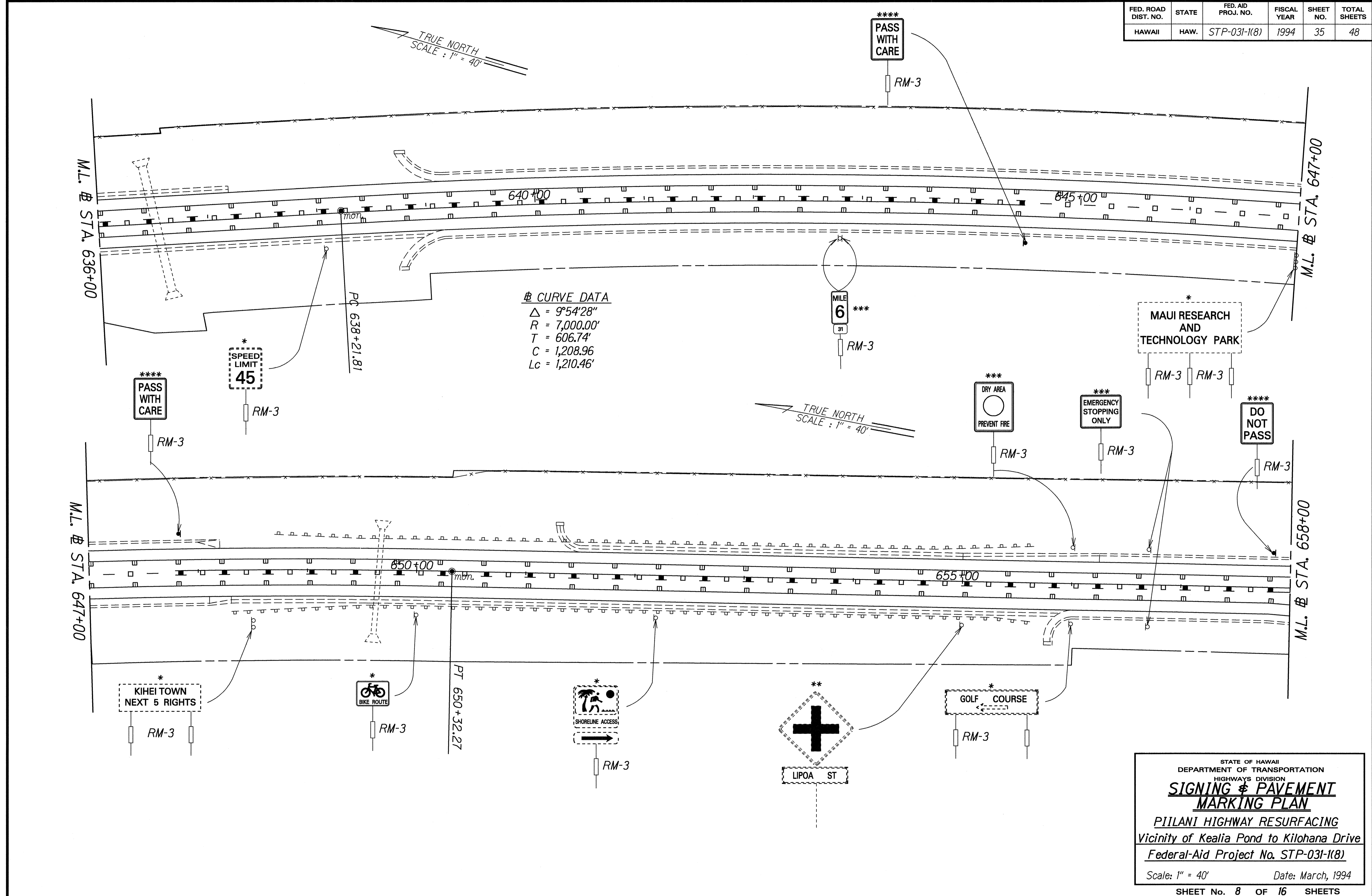
FED. ROAD DIST. NO.	STATE	FED. AID PROJ. NO.	FISCAL YEAR	SHEET NO.	TOTAL SHEETS
HAWAII	HAW.	STP-031-1(8)	1994	34	48



SURVEY PLOTTED BY	DATE
DRAWN BY G. Landa	12-21-94
TRACED BY C. Ragusa	
QUANTITIES BY	
CHECKED BY	
ORIGINAL PLAN	
NOTE BOOK	
201imp7.dwg	
No.	

STATE OF HAWAII
 DEPARTMENT OF TRANSPORTATION
 HIGHWAYS DIVISION
SIGNING & PAVEMENT MARKING PLAN
 PIILANI HIGHWAY RESURFACING
 Vicinity of Kealia Pond to Kilohana Drive
 Federal-Aid Project No. STP-031-1(8)
 Scale: 1" = 40' Date: March, 1994
 SHEET No. 7 OF 16 SHEETS

FED. ROAD DIST. NO.	STATE	FED. AID PROJ. NO.	FISCAL YEAR	SHEET NO.	TOTAL SHEETS
HAWAII	HAW.	STP-031-1(8)	1994	35	48

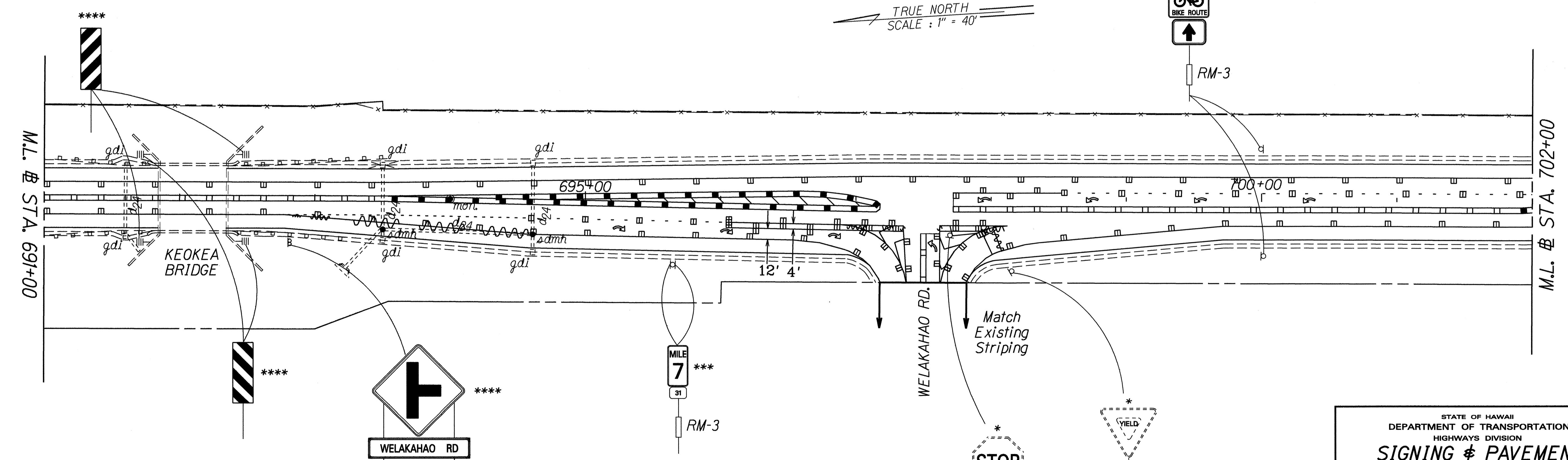
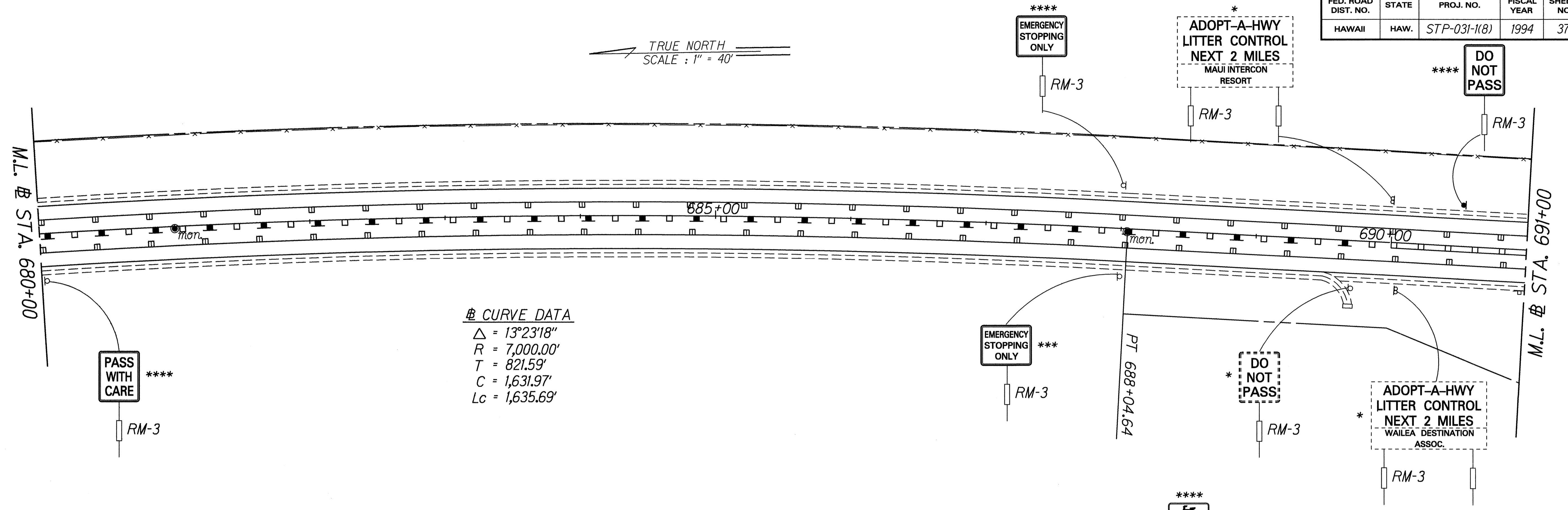


CURVE DATA
 $\Delta = 9^{\circ}54'28''$
 $R = 7,000.00'$
 $T = 606.74'$
 $C = 1,208.96'$
 $Lc = 1,210.46'$

DATE: 12-21-94
 SURVEY PLOTTED BY: [blank]
 DRAWN BY: G. Urubla
 CHECKED BY: C. Barasa
 QUANTITIES BY: [blank]
 ORIGINAL PLAN: [blank]
 NOTE BOOK: [blank]
 2/11/98/8/94

STATE OF HAWAII
 DEPARTMENT OF TRANSPORTATION
 HIGHWAYS DIVISION
SIGNING & PAVEMENT MARKING PLAN
 PIILANI HIGHWAY RESURFACING
 Vicinity of Kealia Pond to Kilohana Drive
 Federal-Aid Project No. STP-031-1(8)
 Scale: 1" = 40' Date: March, 1994
 SHEET No. 8 OF 16 SHEETS

FED. ROAD DIST. NO.	STATE	FED. AID PROJ. NO.	FISCAL YEAR	SHEET NO.	TOTAL SHEETS
HAWAII	HAW.	STP-031-1(8)	1994	37	48



ORIGINAL PLAN
 SURVEY PLOTTED BY DATE
 DRAWN BY
 NOTE BOOK
 DESIGNED BY
 CHECKED BY

LEGEND FOR AS-BUILT POSTINGS

	Squiggly line for as-built deletion
	Double line for as-built deletion
Roadway	Text for as-built posting

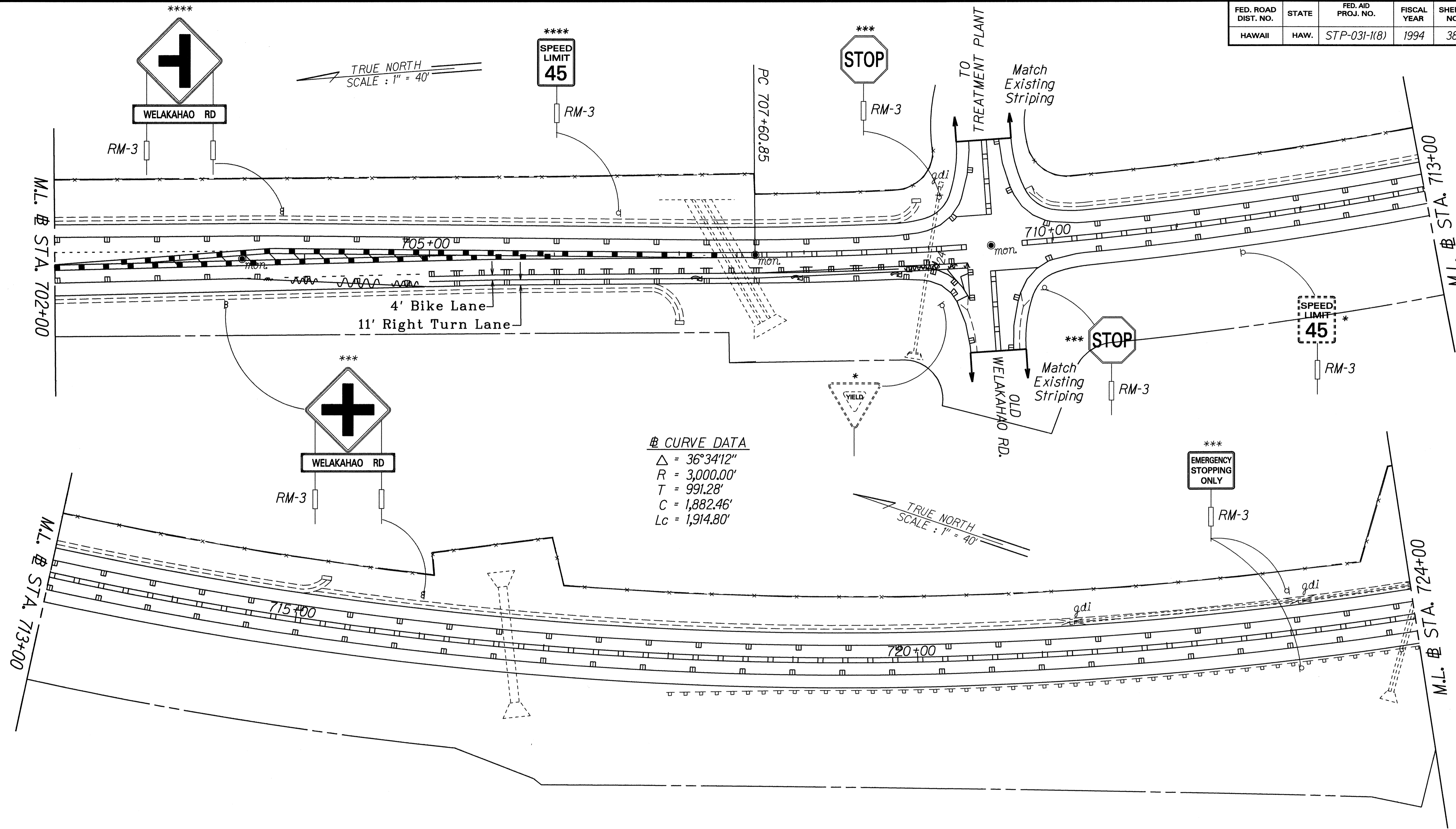
STATE OF HAWAII
 DEPARTMENT OF TRANSPORTATION
 HIGHWAYS DIVISION

**SIGNING & PAVEMENT
 MARKING PLAN**

PIILANI HIGHWAY RESURFACING
 Vicinity of Kealia Pond to Kilohana Drive
 Federal-Aid Project No. STP-031-1(8)
 Scale: 1" = 40' Date: March, 1994

SHEET No. 10 OF 16 SHEETS

FED. ROAD DIST. NO.	STATE	FED. AID PROJ. NO.	FISCAL YEAR	SHEET NO.	TOTAL SHEETS
HAWAII	HAW.	STP-031-1(8)	1994	38	48

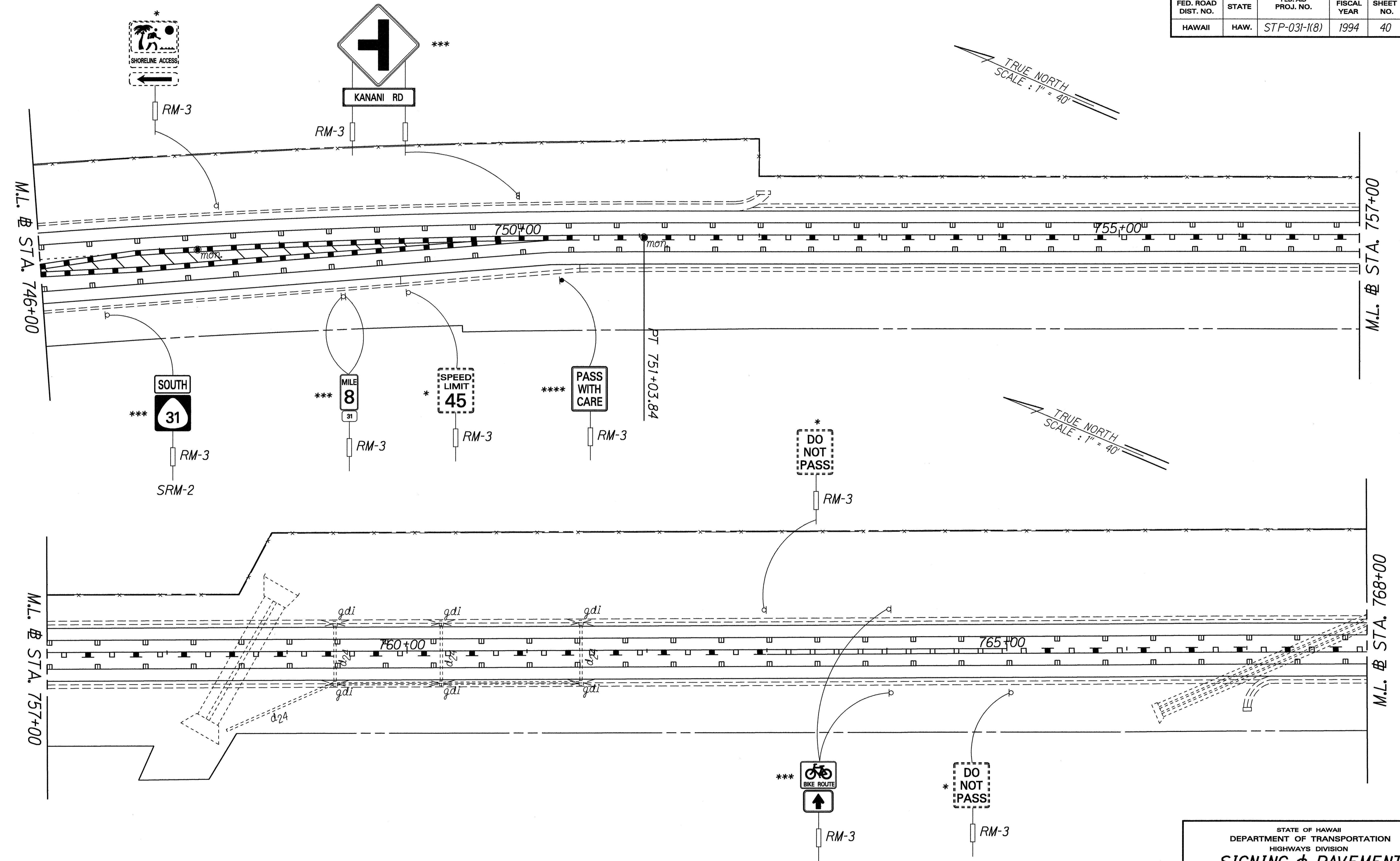


ORIGINAL PLAN	DATE	MAR. 1994
SURVEY PLOTTED BY		
DRAWN BY		
DESIGNED BY		
CHECKED BY		

LEGEND FOR AS-BUILT POSTINGS	
	Squiggly line for as-built deletion
	Double line for as-built deletion
Roadway	Text for as-built posting

STATE OF HAWAII
 DEPARTMENT OF TRANSPORTATION
 HIGHWAYS DIVISION
SIGNING & PAVEMENT MARKING PLAN
 PIILANI HIGHWAY RESURFACING
 Vicinity of Kealia Pond to Kiloana Drive
 Federal-Aid Project No. STP-031-1(8)
 Scale: 1" = 40' Date: March, 1994
 SHEET No. 11 OF 16 SHEETS

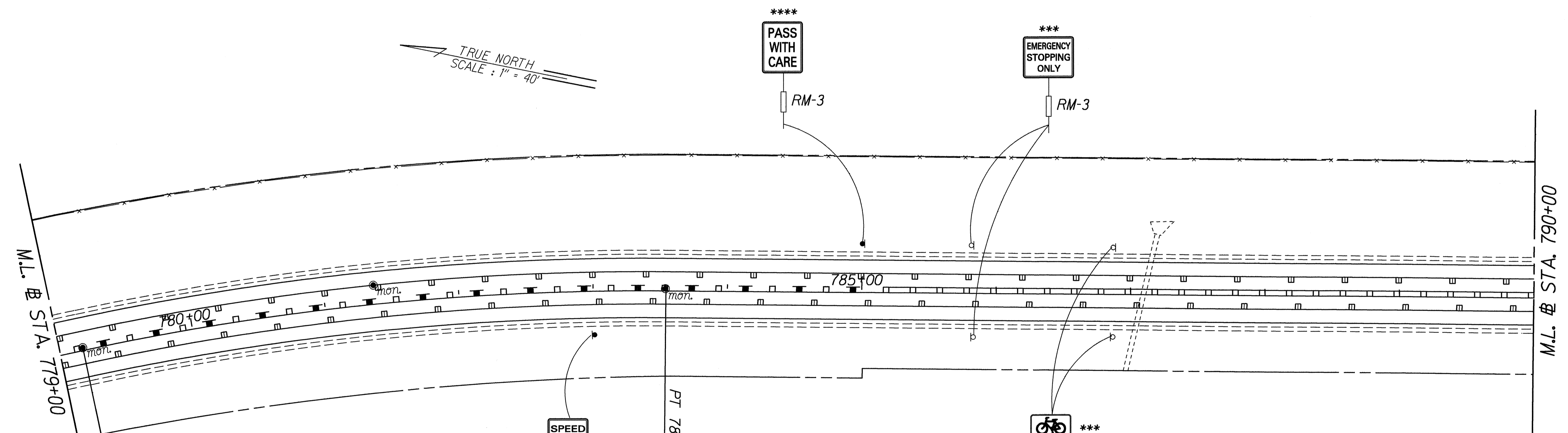
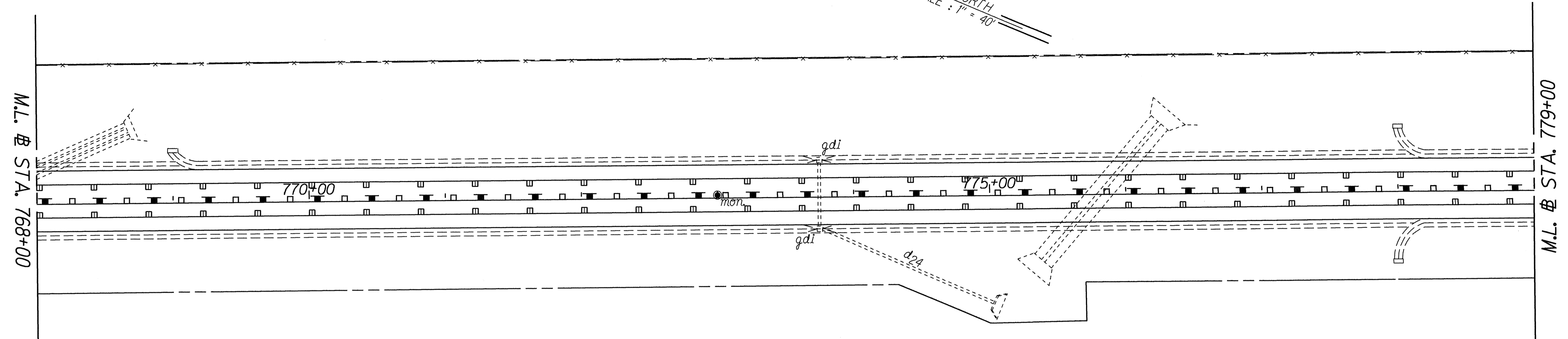
FED. ROAD DIST. NO.	STATE	FED. AID PROJ. NO.	FISCAL YEAR	SHEET NO.	TOTAL SHEETS
HAWAII	HAW.	STP-031-1(8)	1994	40	48



SURVEY PLOTTED BY: DATE: 11-23-94
 DRAWN BY: J. GALLAGHER
 NOTE BOOK: C. F. FARRER
 QUANTITIES BY: 2/11/94
 CHECKED BY:

STATE OF HAWAII
 DEPARTMENT OF TRANSPORTATION
 HIGHWAYS DIVISION
SIGNING & PAVEMENT MARKING PLAN
 PIILANI HIGHWAY RESURFACING
 Vicinity of Kealia Pond to Kilohana Drive
 Federal-Aid Project No. STP-031-1(8)
 Scale: 1" = 40' Date: March, 1994
 SHEET No. 13 OF 16 SHEETS

FED. ROAD DIST. NO.	STATE	FED. AID PROJ. NO.	FISCAL YEAR	SHEET NO.	TOTAL SHEETS
HAWAII	HAW.	STP-031-1(8)	1994	41	48



☯ CURVE DATA
 $\Delta = 12^\circ 30' 59''$
 $R = 2,000.00'$
 $T = 219.33'$
 $C = 436.04'$
 $Lc = 436.90'$

SPEED LIMIT 45 ****
 RM-3

PASS WITH CARE
 RM-3

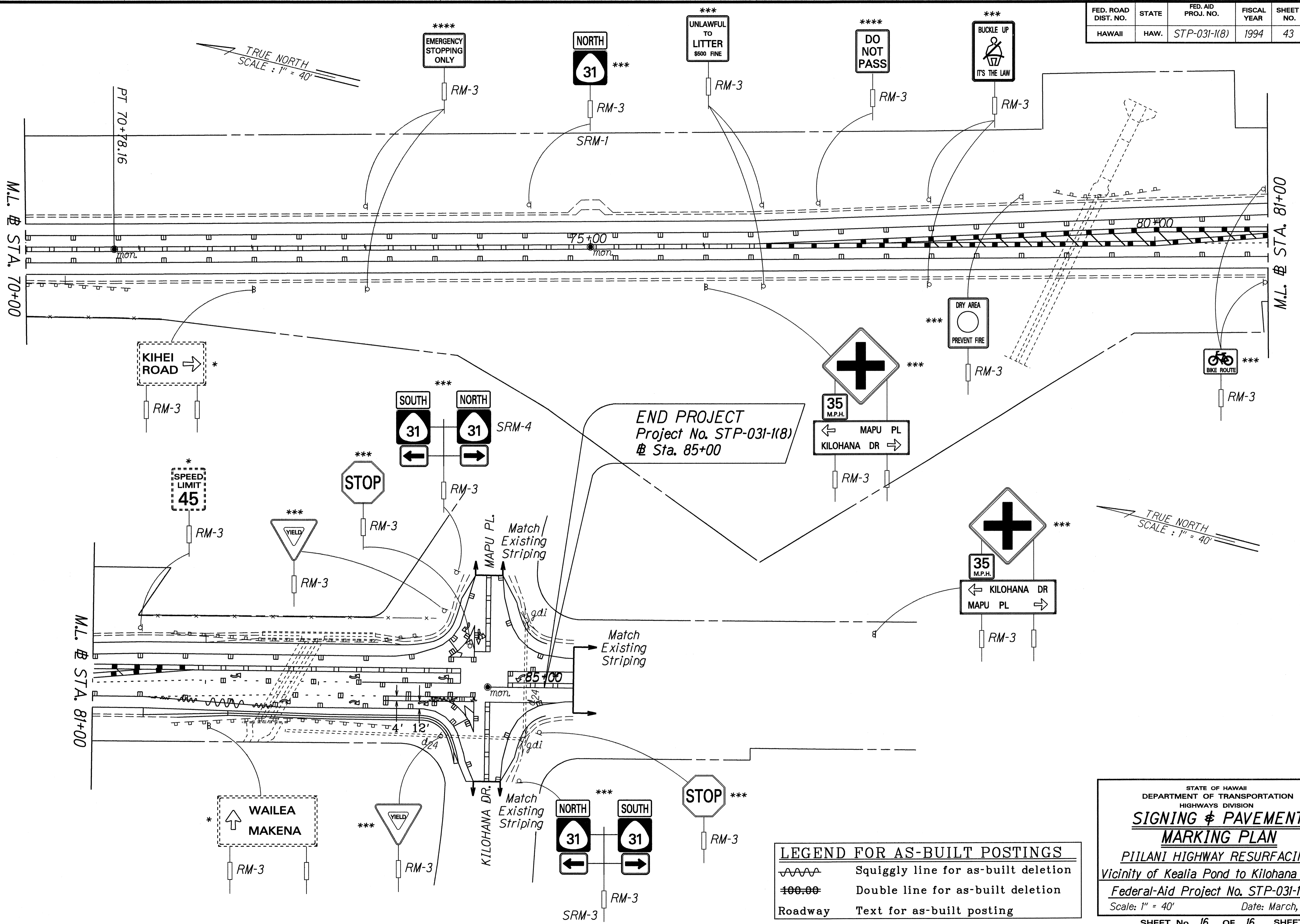
EMERGENCY STOPPING ONLY
 RM-3

BIKE ROUTE
 RM-3

DATE: 11-23-94
 SURVEY PLOTTED BY: J. G. GIBSON
 DRAWN BY: J. G. GIBSON
 NOTE BOOK: 2011mp14.dgn
 QUANTITIES BY: J. G. GIBSON
 CHECKED BY: J. G. GIBSON

STATE OF HAWAII
 DEPARTMENT OF TRANSPORTATION
 HIGHWAYS DIVISION
SIGNING & PAVEMENT MARKING PLAN
 PIILANI HIGHWAY RESURFACING
 Vicinity of Kealia Pond to Kilohana Drive
 Federal-Aid Project No. STP-031-1(8)
 Scale: 1" = 40' Date: March, 1994
 SHEET No. 14 OF 16 SHEETS

FED. ROAD DIST. NO.	STATE	FED. AID PROJ. NO.	FISCAL YEAR	SHEET NO.	TOTAL SHEETS
HAWAII	HAW.	STP-031-1(8)	1994	43	48



ORIGINAL PLAN	DATE
SURVEY PLOTTED BY	15-23-92
DRAWN BY	J. GIBBON
NOTES BOOK	
DESIGNED BY	C. BERGEB
REVISIONS BY	
CHECKED BY	

LEGEND FOR AS-BUILT POSTINGS	
	Squiggly line for as-built deletion
	Double line for as-built deletion
Roadway	Text for as-built posting

STATE OF HAWAII
DEPARTMENT OF TRANSPORTATION
HIGHWAYS DIVISION

**SIGNING & PAVEMENT
MARKING PLAN**

PIILANI HIGHWAY RESURFACING
Vicinity of Kealia Pond to Kilohana Drive
Federal-Aid Project No. STP-031-1(8)
Scale: 1" = 40' Date: March, 1994

SHEET No. 16 OF 16 SHEETS