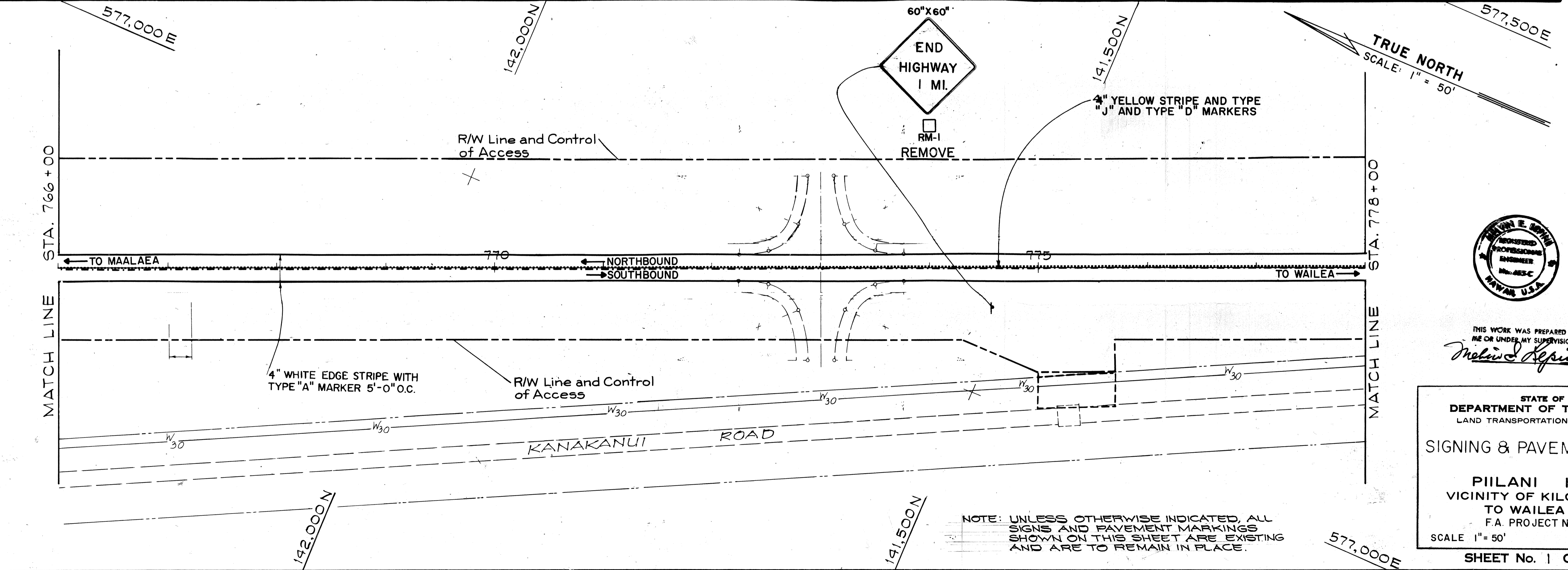
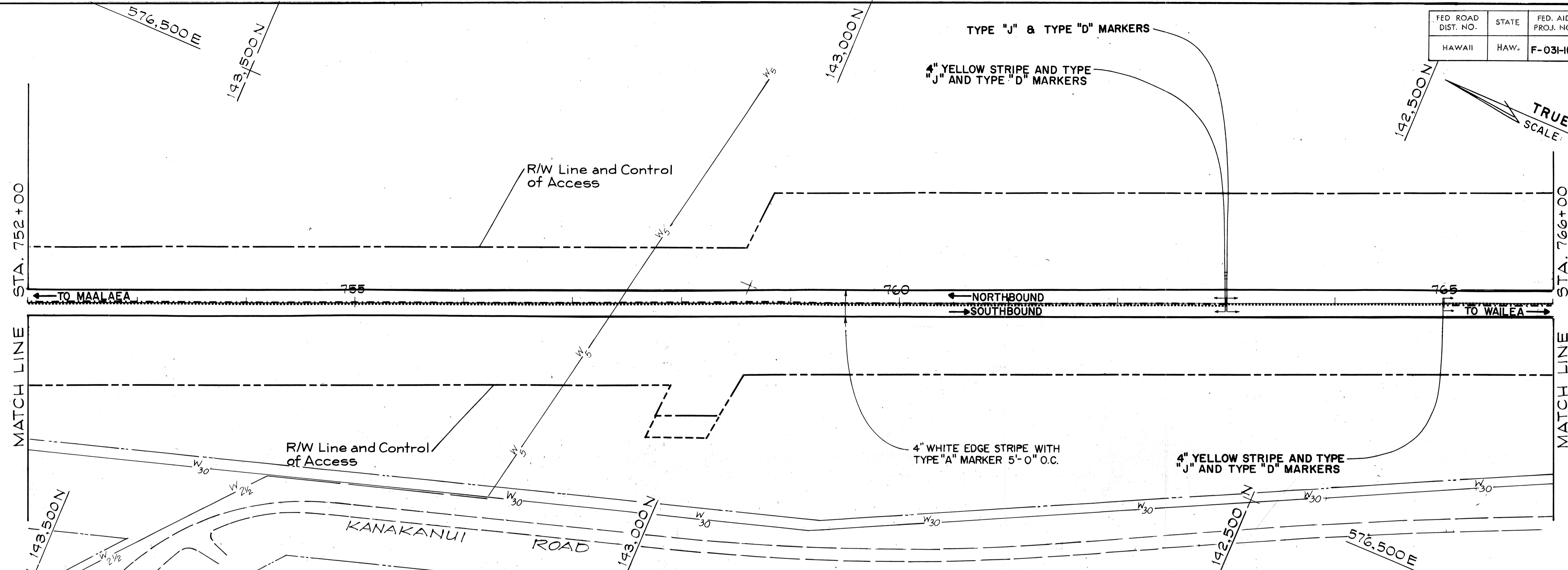
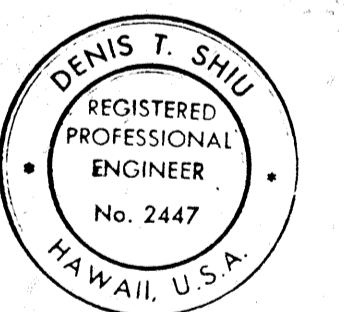
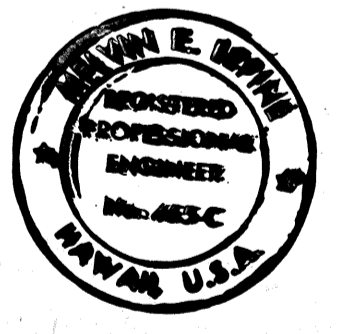


FED. ROAD DIST. NO.	STATE	FED. AID PROJ. NO.	FISCAL YEAR	SHEET NO.	TOTAL SHEETS
HAWAII	HAW.	F-031-1(3)	1987	40	69

TRUE NORTH
SCALE: 1" = 50'



TRUE NORTH
SCALE: 1" = 50'



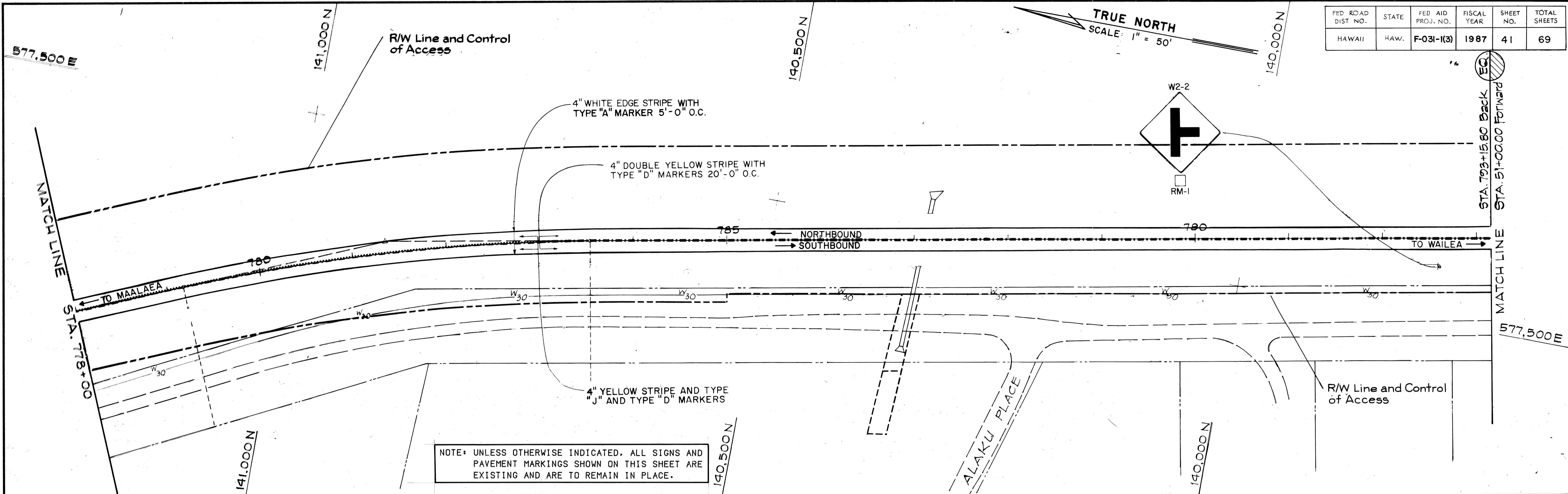
THIS WORK WAS PREPARED BY ME OR UNDER MY SUPERVISION.
Melvin E. Kepine
THIS WORK WAS PREPARED BY ME OR UNDER MY SUPERVISION.
Denis T. Shiu

STATE OF HAWAII
DEPARTMENT OF TRANSPORTATION
LAND TRANSPORTATION FACILITIES DIVISION
SIGNING & PAVEMENT MARKINGS
PIILANI HIGHWAY
VICINITY OF KILOHANA STREET
TO WAILEA IKE DRIVE
F.A. PROJECT NO. F-031-1(3)
SCALE 1" = 50' DATE DEC. 1987
SHEET No. 1 OF 7 SHEETS

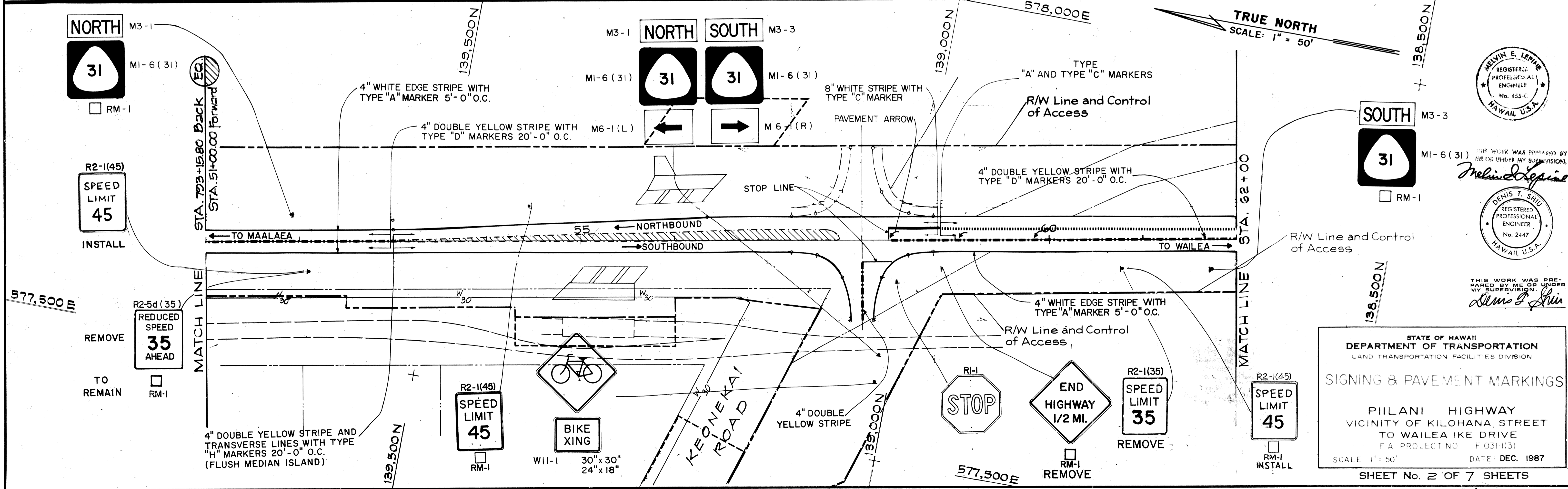
NOTE: UNLESS OTHERWISE INDICATED, ALL SIGNS AND PAVEMENT MARKINGS SHOWN ON THIS SHEET ARE EXISTING AND ARE TO REMAIN IN PLACE.

DATE	
SURVEY PLOTTED BY	
DRAWN BY	
DESIGNED BY	
QUANTITIES BY	
CHECKED BY	
ORIGINAL PLAN	
NOTE BOOK	
No.	

FED. ROAD DIST. NO.	STATE	FED. AID PROJ. NO.	FISCAL YEAR	SHEET NO.	TOTAL SHEETS
HAWAII	HAW.	F-031-1(3)	1987	41	69



NOTE: UNLESS OTHERWISE INDICATED, ALL SIGNS AND PAVEMENT MARKINGS SHOWN ON THIS SHEET ARE EXISTING AND ARE TO REMAIN IN PLACE.



MELVIN E. LEVINE
REGISTERED PROFESSIONAL ENGINEER
No. 455-C
HAWAII, U.S.A.

THIS WORK WAS PREPARED BY ME OR UNDER MY SUPERVISION,
Melvin E. Levine

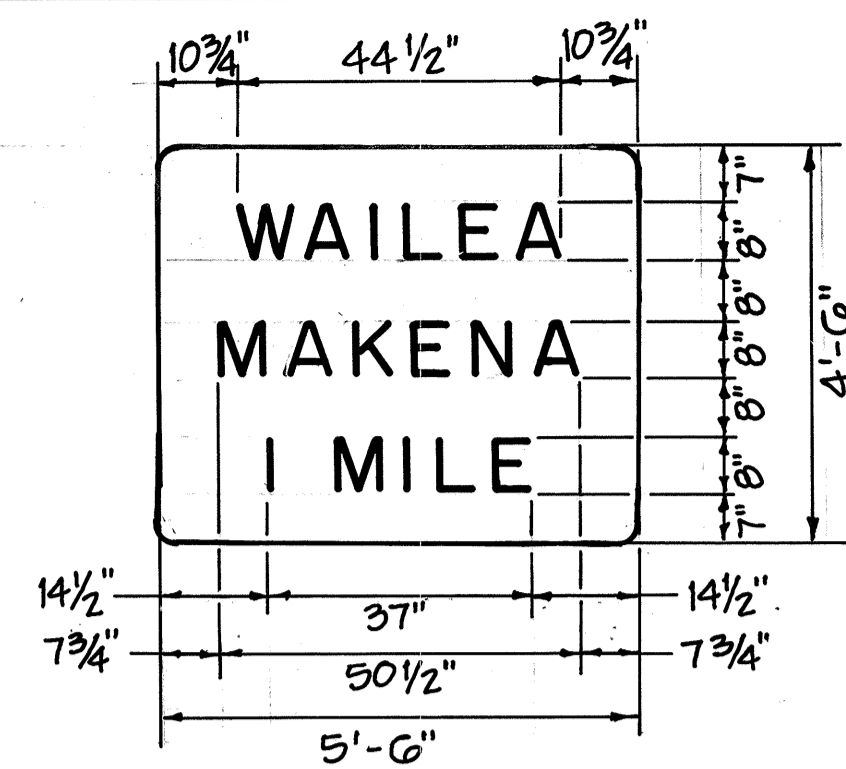
DENIS T. SHUI
REGISTERED PROFESSIONAL ENGINEER
No. 2447
HAWAII, U.S.A.

THIS WORK WAS PREPARED BY ME OR UNDER MY SUPERVISION,
Denis T. Shui

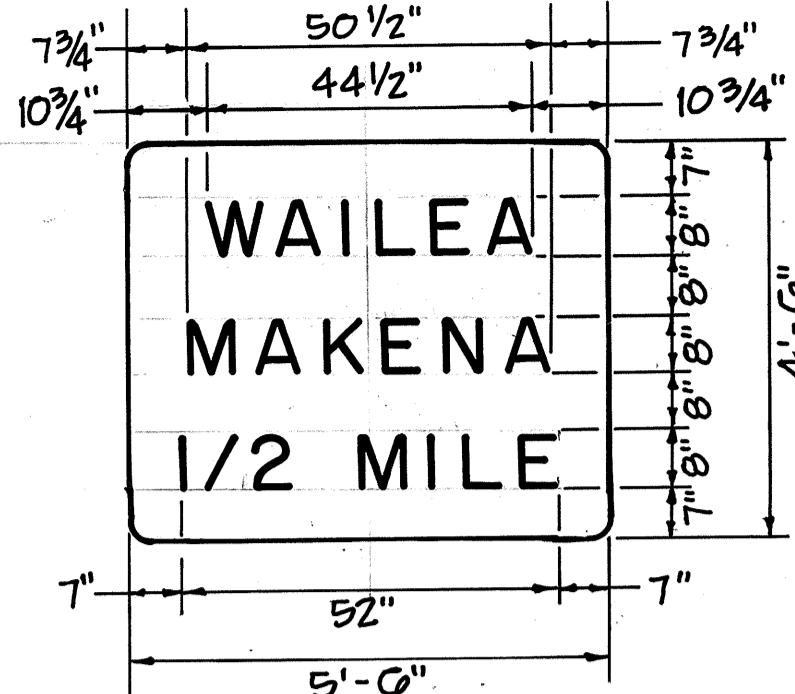
STATE OF HAWAII
DEPARTMENT OF TRANSPORTATION
LAND TRANSPORTATION FACILITIES DIVISION
SIGNING & PAVEMENT MARKINGS
PILANI HIGHWAY
VICINITY OF KILOHANA STREET
TO WAILEA IKE DRIVE
FA PROJECT NO. F 031-1(3)
SCALE: 1" = 50' DATE: DEC. 1987
SHEET No. 2 OF 7 SHEETS

DATE	
SURVEY PLOTTED BY	
DRAWN BY	
TRACED BY	
QUANTITIES BY	
CHECKED BY	
NO.	

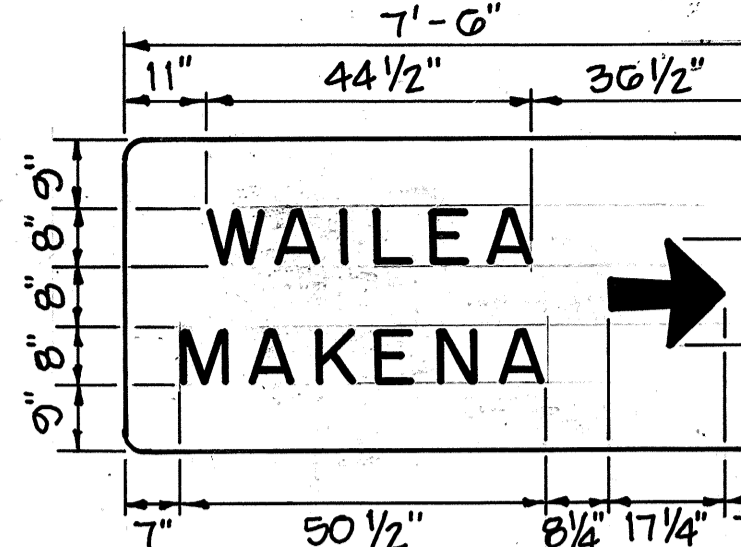
FED. ROAD DIST. NO.	STATE	FED. AID PROJ. NO.	FISCAL YEAR	SHEET NO.	TOTAL SHEETS
HAWAII	HAW.	F-031-1(3)	1987	42	69



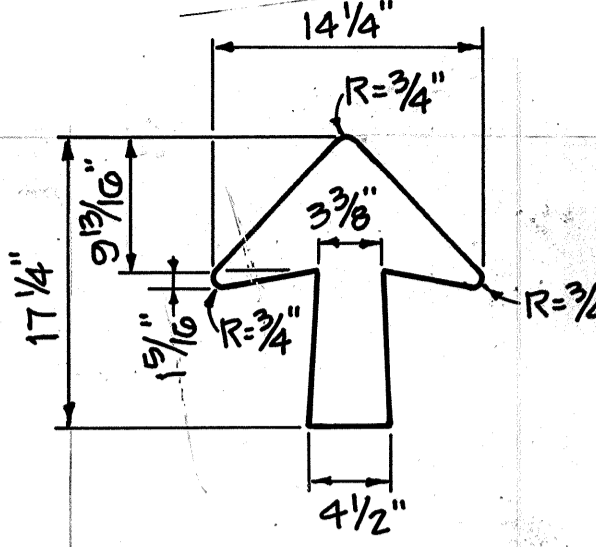
SIGN DIR-3
NOT TO SCALE



SIGN DIR-2
NOT TO SCALE



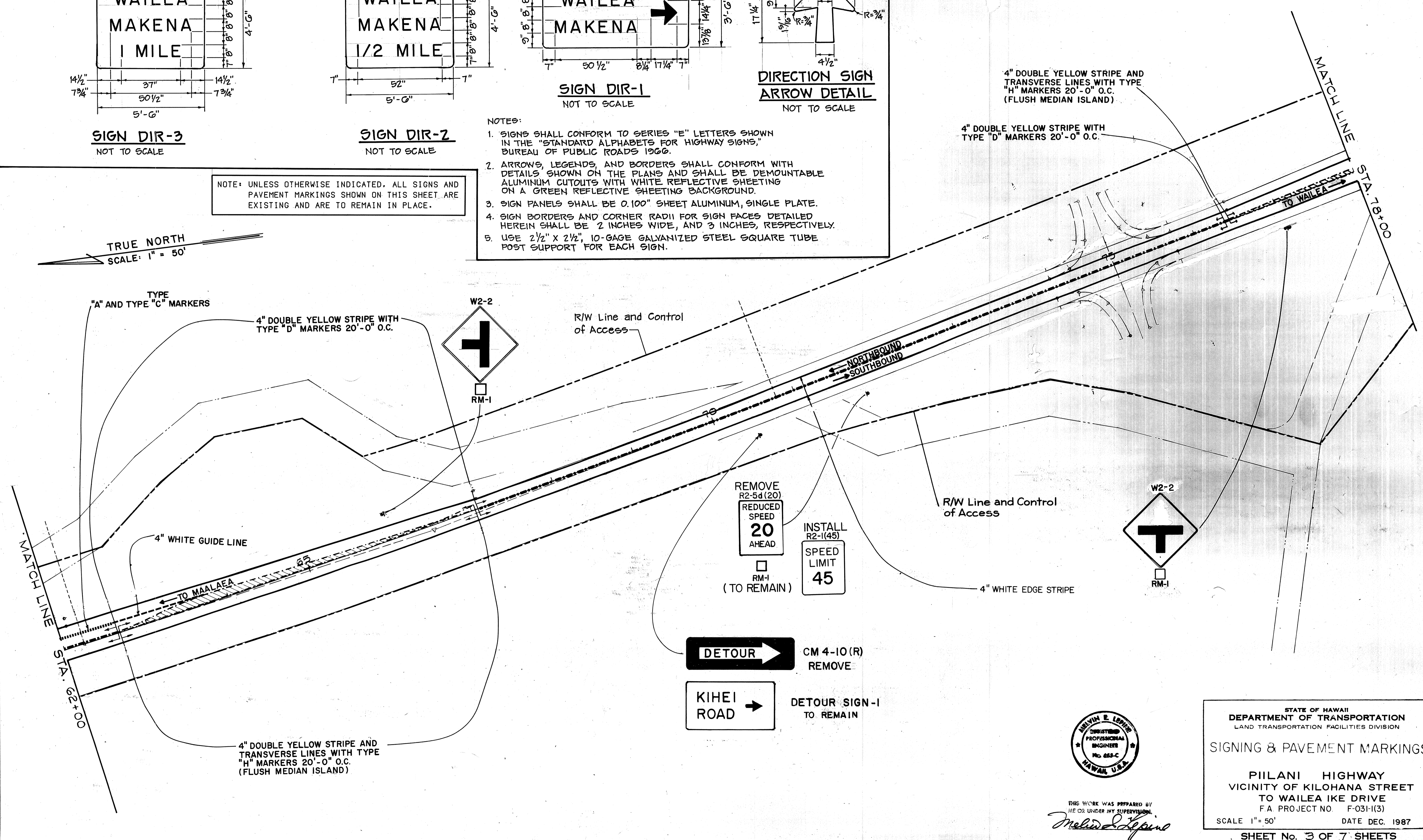
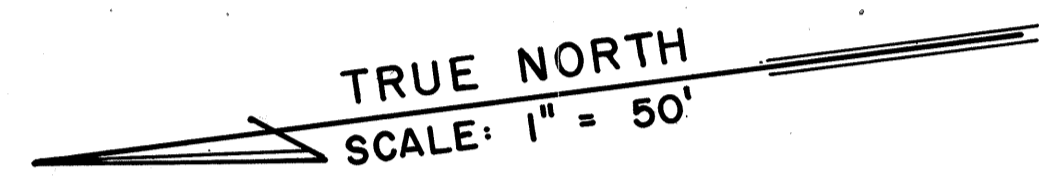
SIGN DIR-1
NOT TO SCALE



**DIRECTION SIGN
ARROW DETAIL**
NOT TO SCALE

NOTE: UNLESS OTHERWISE INDICATED, ALL SIGNS AND PAVEMENT MARKINGS SHOWN ON THIS SHEET ARE EXISTING AND ARE TO REMAIN IN PLACE.

- NOTES:
- SIGNS SHALL CONFORM TO SERIES "E" LETTERS SHOWN IN THE "STANDARD ALPHABETS FOR HIGHWAY SIGNS," BUREAU OF PUBLIC ROADS 1966.
 - ARROWS, LEGENDS, AND BORDERS SHALL CONFORM WITH DETAILS SHOWN ON THE PLANS AND SHALL BE DEMOUNTABLE ALUMINUM CUTOUTS WITH WHITE REFLECTIVE SHEETING ON A GREEN REFLECTIVE SHEETING BACKGROUND.
 - SIGN PANELS SHALL BE 0.100" SHEET ALUMINUM, SINGLE PLATE.
 - SIGN BORDERS AND CORNER RADIUS FOR SIGN FACES DETAILED HEREIN SHALL BE 2 INCHES WIDE, AND 3 INCHES, RESPECTIVELY.
 - USE 2 1/2" X 2 1/2", 10-GAGE GALVANIZED STEEL SQUARE TUBE POST SUPPORT FOR EACH SIGN.



DATE	_____
SURVEY PLOTTED BY	_____
DRAWN BY	_____
DESIGNED BY	_____
QUANTITIES BY	_____
CHECKED BY	_____
NO.	_____



THIS WORK WAS PREPARED BY ME OR UNDER MY SUPERVISION.
Melvin E. Levine

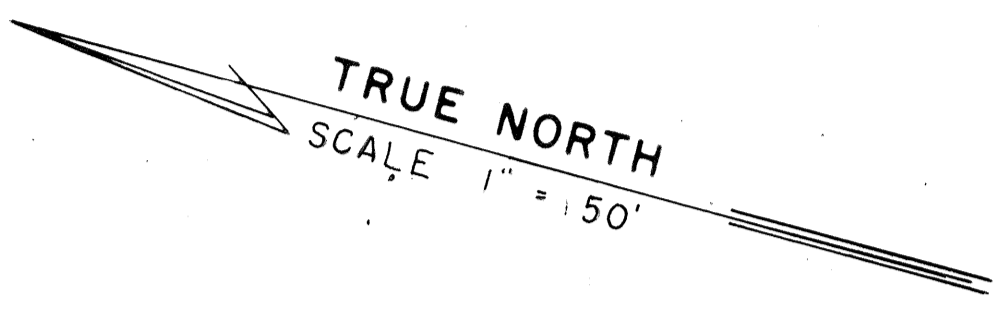
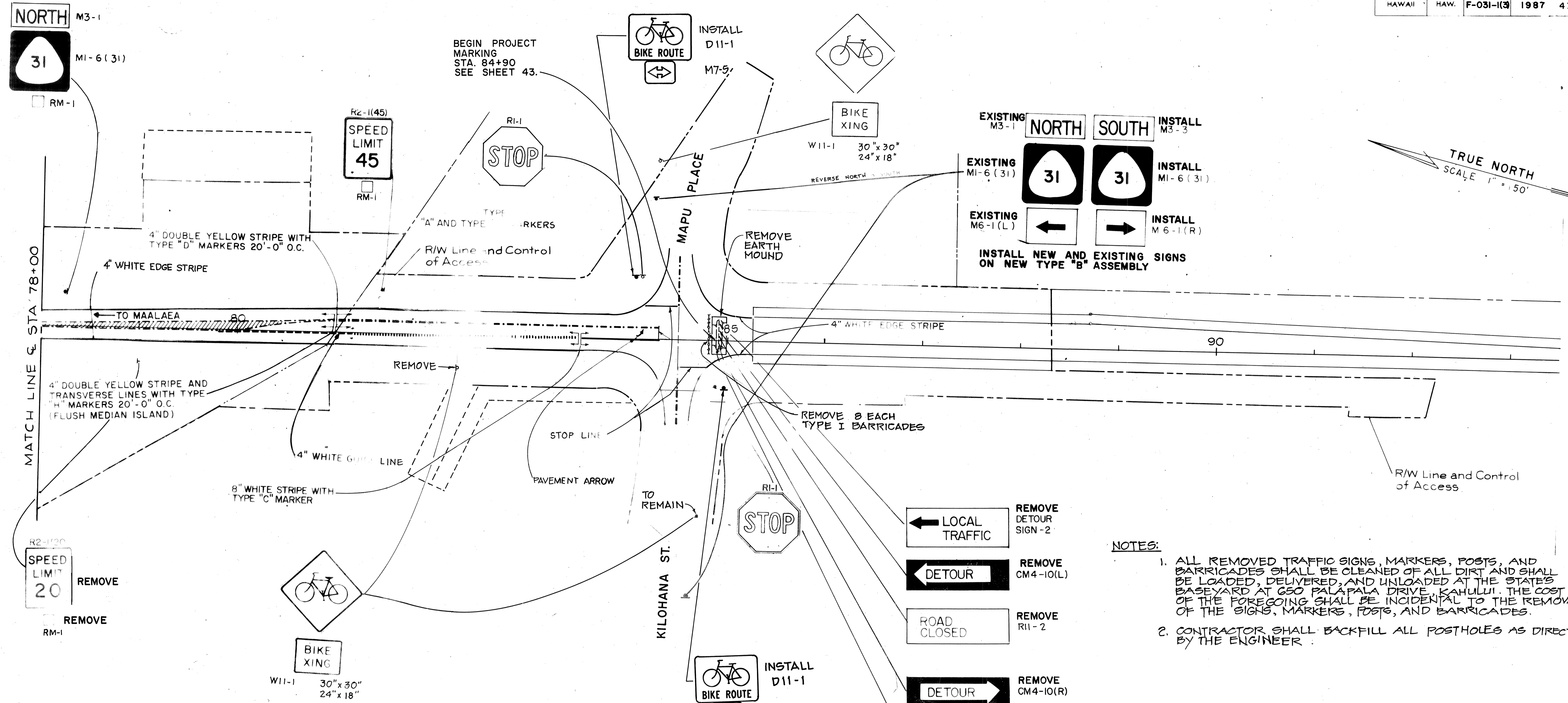
STATE OF HAWAII
DEPARTMENT OF TRANSPORTATION
LAND TRANSPORTATION FACILITIES DIVISION

SIGNING & PAVEMENT MARKINGS

PILANI HIGHWAY
VICINITY OF KILOHANA STREET
TO WAILEA IKE DRIVE
F.A. PROJECT NO. F-031-1(3)
SCALE 1" = 50' DATE DEC. 1987

SHEET No. 3 OF 7 SHEETS

FED. ROAD DIST. NO.	STATE	FED. AID PROJ. NO.	FISCAL YEAR	SHEET NO.	TOTAL SHEETS
HAWAII	HAW.	F-031-1(3)	1987	43	69

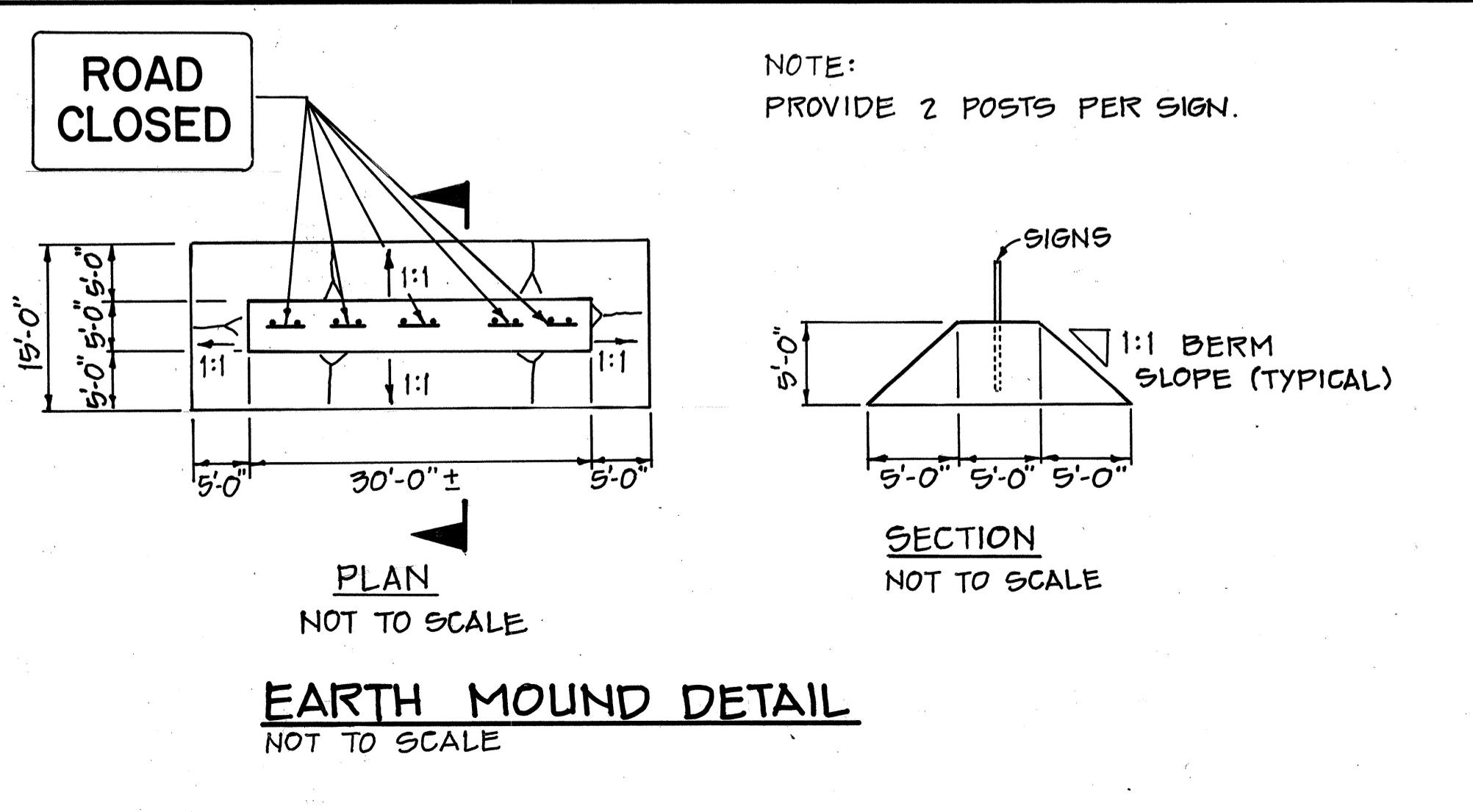


- NOTES:**
1. ALL REMOVED TRAFFIC SIGNS, MARKERS, POSTS, AND BARRICADES SHALL BE CLEANED OF ALL DIRT AND SHALL BE LOADED, DELIVERED, AND UNLOADED AT THE STATE'S BASEYARD AT 650 PALAPALA DRIVE, KAHULUI. THE COST OF THE FOREGOING SHALL BE INCIDENTAL TO THE REMOVAL OF THE SIGNS, MARKERS, POSTS, AND BARRICADES.
 2. CONTRACTOR SHALL BACKFILL ALL POSTHOLES AS DIRECTED BY THE ENGINEER.

- ← LOCAL TRAFFIC REMOVE DETOUR SIGN - 2
- ← DETOUR REMOVE CM 4-10(L)
- ROAD CLOSED REMOVE R11-2
- DETOUR REMOVE CM 4-10(R)
- KIHEI ROAD REMOVE DETOUR SIGN - 1

DETOUR SIGNS AND ROAD CLOSED SIGN ON POSTS ON EARTH MOUND.

NOTE: UNLESS OTHERWISE INDICATED, ALL SIGNS AND PAVEMENT MARKINGS SHOWN ON THIS SHEET ARE EXISTING AND ARE TO REMAIN IN PLACE.



TRANS - MERIDIAN
ENGINEERS & SURVEYORS
164 S. BERTANHA STREET
HONOLULU, HAWAII 96813

MELVIN E. LEFNE
REGISTERED PROFESSIONAL ENGINEER
No. 455-C
HAWAII, U.S.A.

STATE OF HAWAII
DEPARTMENT OF TRANSPORTATION
LAND TRANSPORTATION FACILITIES DIVISION

SIGNING & PAVEMENT MARKINGS

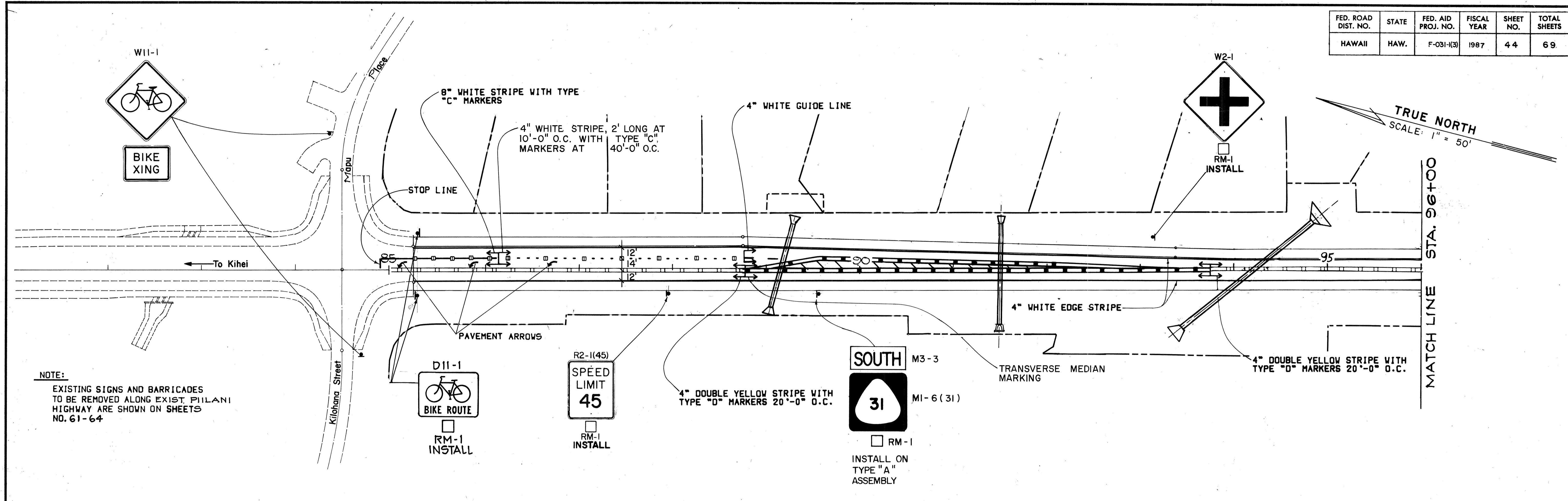
PIILANI HIGHWAY
VICINITY OF KILOHANA STREET
TO WAILEA IKE DRIVE
FA PROJECT NO. F-031(13)

SCALE 1" = 50' DATE

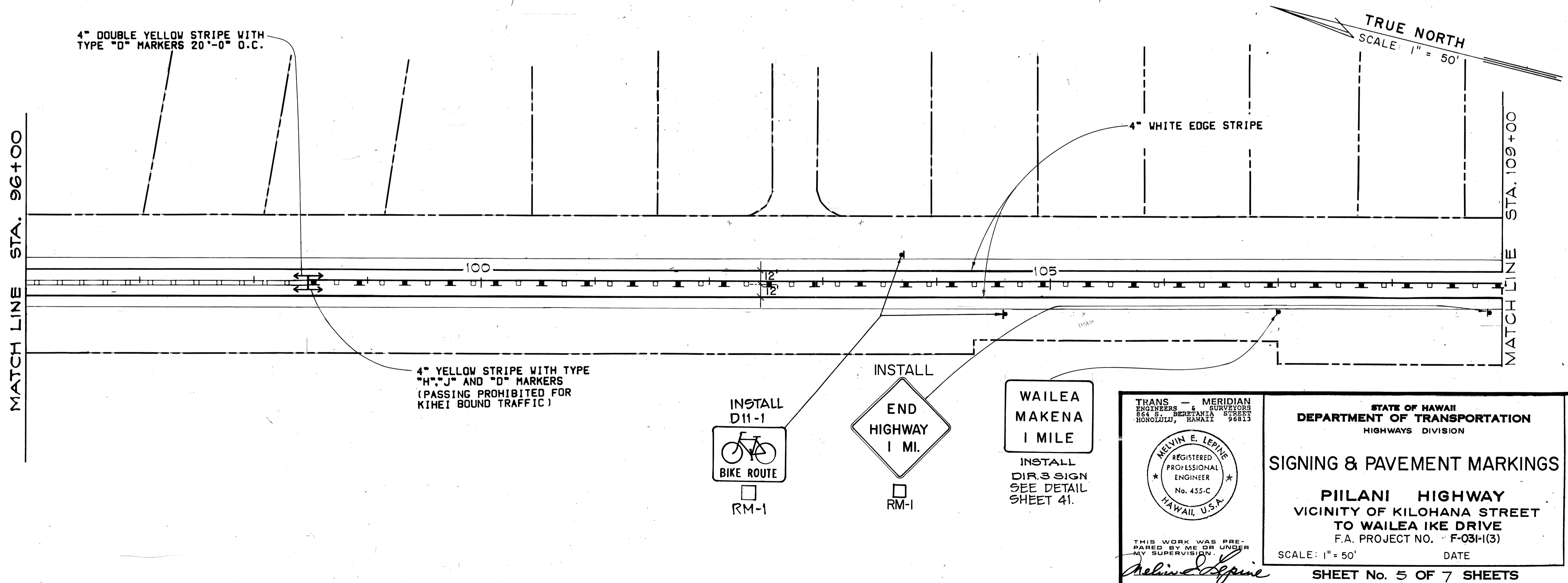
SHEET No. 4 OF 7 SHEETS

DATE: _____
SURVEY PLOTTED BY: _____
DRAWN BY: _____
TRACED BY: _____
DESIGNED BY: _____
CHECKED BY: _____
No. _____

FED. ROAD DIST. NO.	STATE	FED. AID PROJ. NO.	FISCAL YEAR	SHEET NO.	TOTAL SHEETS
HAWAII	HAW.	F-031-(3)	1987	44	69



NOTE:
EXISTING SIGNS AND BARRICADES TO BE REMOVED ALONG EXIST. PIILANI HIGHWAY ARE SHOWN ON SHEETS NO. 61-64



- LEGEND**
- 4" WHITE EDGE STRIPE
 - 8" WHITE STRIPE WITH TYPE "C" MARKERS
 - 4" YELLOW STRIPE WITH TYPE "H", "J" & "D" MARKERS
 - 4" DOUBLE YELLOW STRIPE WITH TYPE "D" MARKERS 20'-0" O.C.
 - TYPE "J" & "D" MARKERS
 - TYPE "A" & "C" MARKERS
 - WHITE GUIDE LINE
 - 4" DOUBLE YELLOW STRIPE WITH TYPE "H" MARKERS 20'-0" O.C. & 12" TRANSVERSE LINES

ALL PAVEMENT STRIPING TO BE PAINT.

DATE	_____
SURVEY PLOTTED BY	_____
TRACED BY	_____
DESIGNED BY	_____
QUANTITIES BY	_____
CHECKED BY	_____
ORIGINAL PLAN	_____
NOTE BOOK	_____
No.	_____

TRANS — MERIDIAN
ENGINEERS & SURVEYORS
864 S. BERSTANIA STREET
HONOLULU, HAWAII 96813

MELVIN E. LEPIKE
REGISTERED PROFESSIONAL ENGINEER
No. 455-C
HAWAII, U.S.A.

THIS WORK WAS PREPARED BY ME OR UNDER MY SUPERVISION.
Melvin E. Lepike

STATE OF HAWAII
DEPARTMENT OF TRANSPORTATION
HIGHWAYS DIVISION

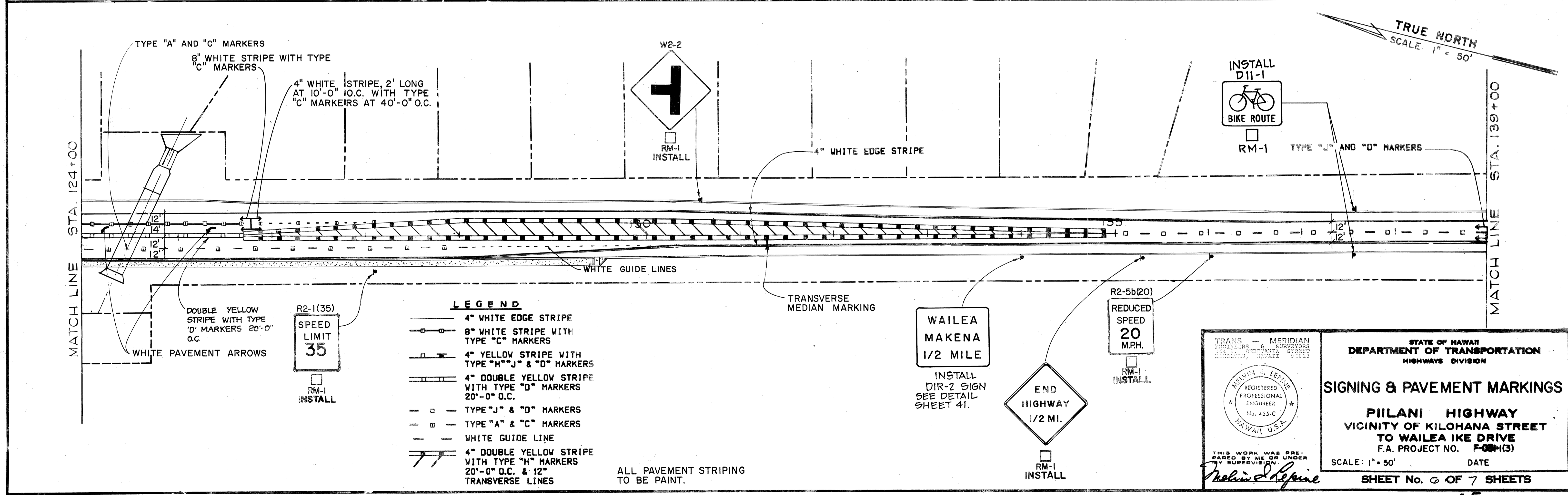
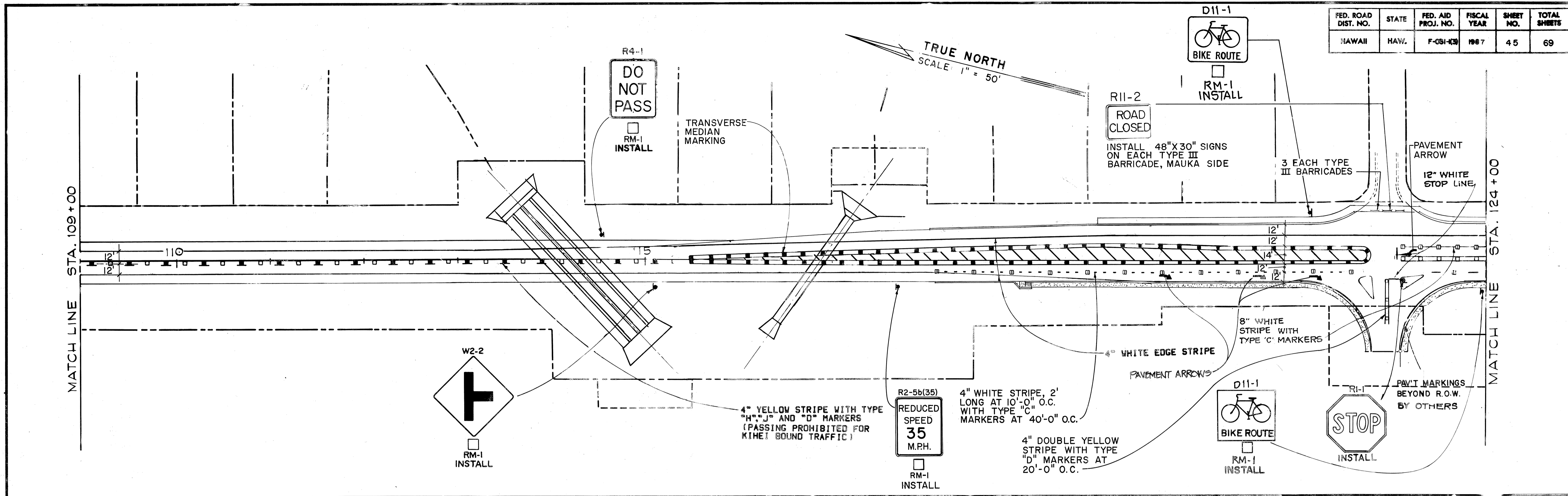
SIGNING & PAVEMENT MARKINGS

PIILANI HIGHWAY
VICINITY OF KILOHANA STREET
TO WAILEA IKE DRIVE
F.A. PROJECT NO. F-031-(3)

SCALE: 1" = 50' DATE _____

SHEET No. 5 OF 7 SHEETS

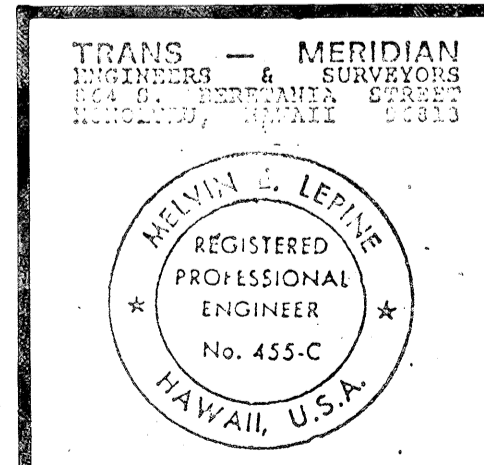
FED. ROAD DIST. NO.	STATE	FED. AID PROJ. NO.	FISCAL YEAR	SHEET NO.	TOTAL SHEETS
HAWAII	HAW.	F-051-433	1987	45	69



- LEGEND**
- 4" WHITE EDGE STRIPE
 - 8" WHITE STRIPE WITH TYPE "C" MARKERS
 - 4" YELLOW STRIPE WITH TYPE "H", "J" & "D" MARKERS
 - 4" DOUBLE YELLOW STRIPE WITH TYPE "D" MARKERS 20'-0" O.C.
 - TYPE "J" & "D" MARKERS
 - TYPE "A" & "C" MARKERS
 - WHITE GUIDE LINE
 - 4" DOUBLE YELLOW STRIPE WITH TYPE "H" MARKERS 20'-0" O.C. & 12" TRANSVERSE LINES

ALL PAVEMENT STRIPING TO BE PAINT.

DATE	
DESIGNED BY	
DRAWN BY	
CHECKED BY	
QUANTITIES BY	
NOTED BY	
ORIGINAL PLAN	
NO.	



STATE OF HAWAII
DEPARTMENT OF TRANSPORTATION
HIGHWAYS DIVISION

SIGNING & PAVEMENT MARKINGS

PIILANI HIGHWAY
VICINITY OF KILOHANA STREET
TO WAILEA IKE DRIVE
F.A. PROJECT NO. F-051-433

SCALE: 1" = 50' DATE

SHEET No. 6 OF 7 SHEETS

