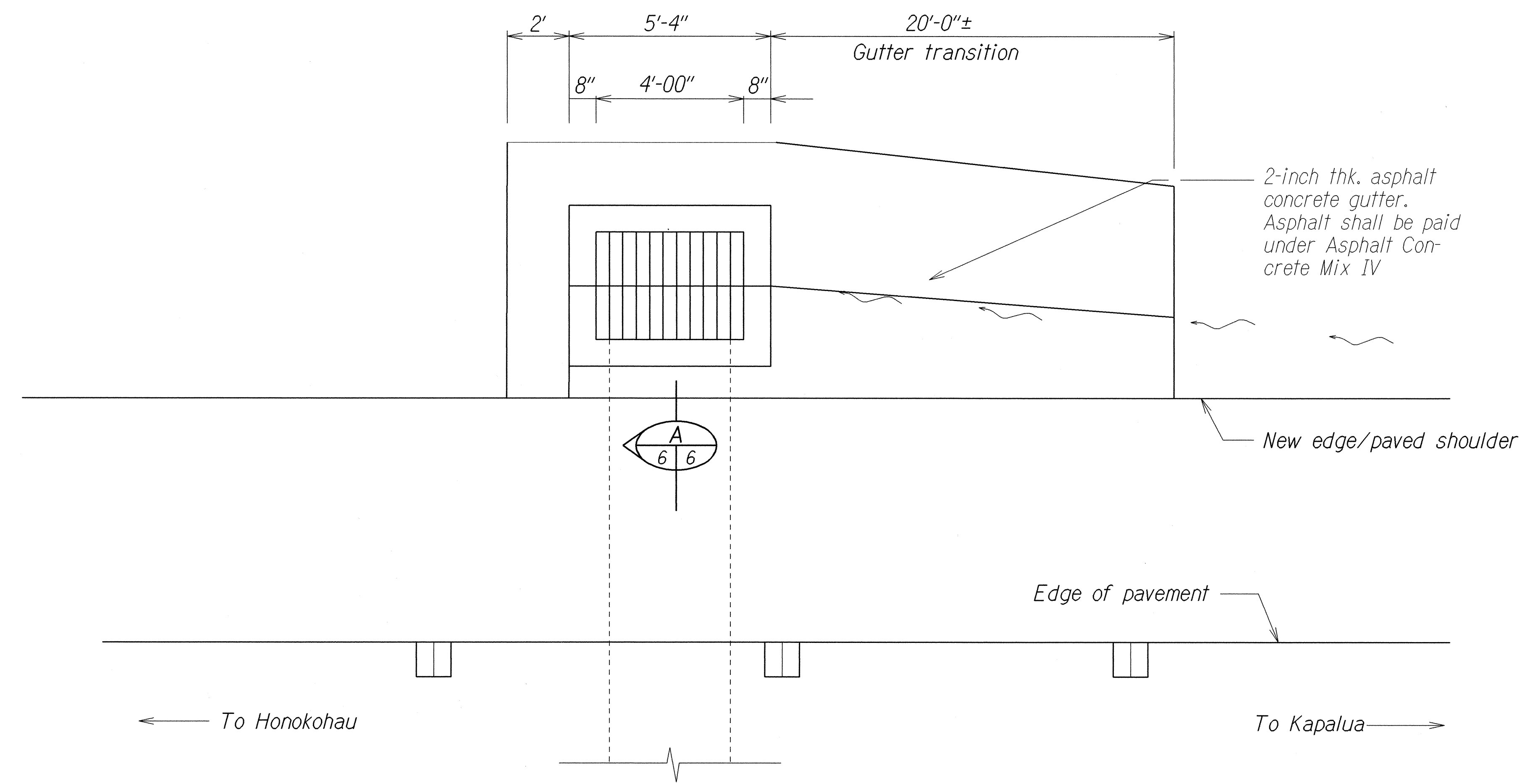


FED. ROAD DIST. NO.	STATE	PROJ. NO.	FISCAL YEAR	SHEET NO.	TOTAL SHEETS
HAWAII	HAW.	30A-01-03M	2003	28	42



#### DRAINAGE SUMMARY

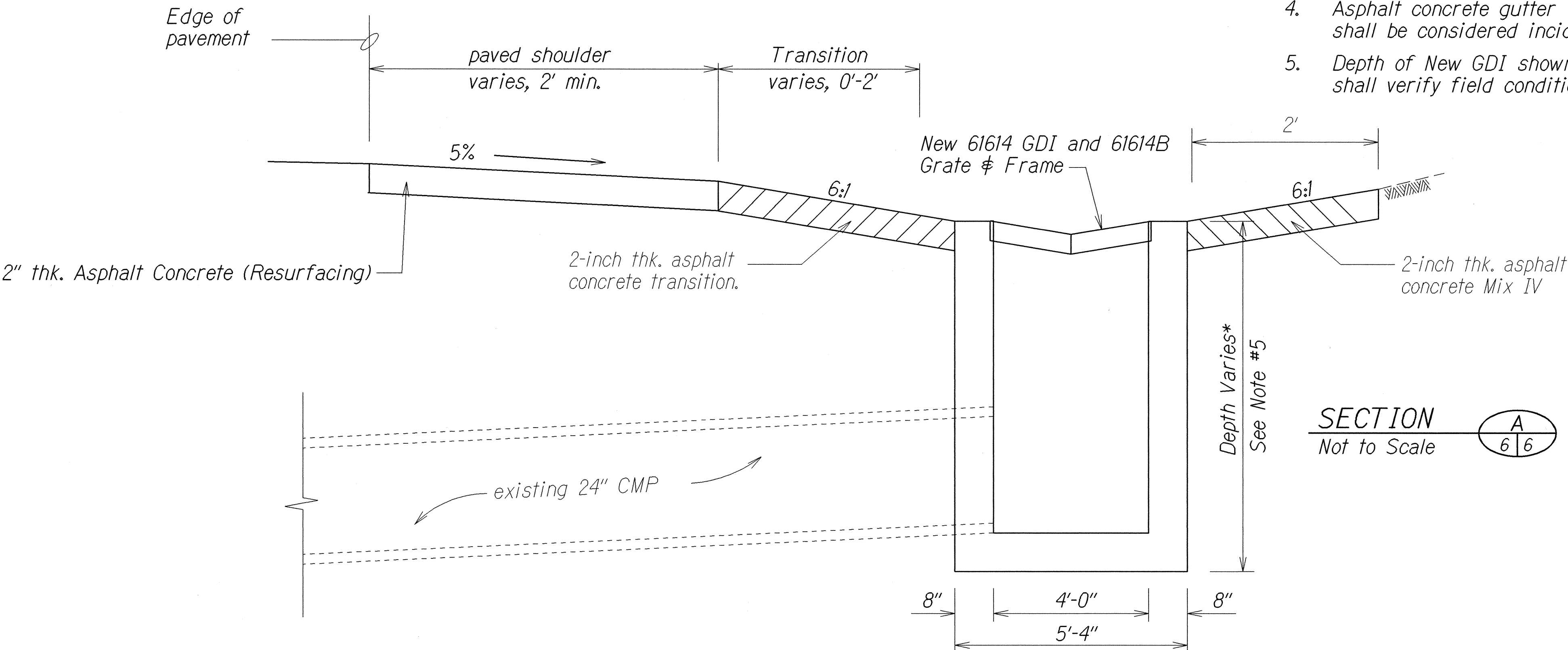
ITEM NO.	604.		
	2400		
UNIT USED	Each		
Baseline Station	Type 61614 Grated Drop Inlet		
200+71± Rt.	1		
218+35± Rt.	1		
226+72 Rt.	1		
TOTAL	3		

#### GENERAL DRAINAGE NOTES:

- Contractor shall verify inverts of existing inlet structures.
- Drainage system will be functional at all times during construction. The Contractor is to furnish materials, equipment, labor, tools and incidentals necessary to accomplish maintenance of flow. The cost shall be incidental to various contract items.
- The Contractor shall clean existing culverts after installing the Grated Drop Inlet. This item shall not be paid for separately but shall be considered incidental to various contract items.
- Asphalt concrete gutter shall not be paid for separately but shall be considered incidental to Asphalt Concrete Mix IV.
- Depth of New GDI shown are approximate. The Contractor shall verify field conditions prior to fabrication of GDI.

#### DETAIL OF INLET STRUCTURE

Not To Scale



#### SECTION

Not to Scale

STATE OF HAWAII  
DEPARTMENT OF TRANSPORTATION  
HIGHWAYS DIVISION

### DRAINAGE DETAILS

HONOAPIILANI HIGHWAY RESURFACING

Honokahua to Honokohau

Project No. 30A-01-03M

Scale: As Shown      Date: December, 2002

SHEET No. 1 OF 1 SHEETS

DESIGNED BY	DATE
DRAWN BY	12/02
CHECKED BY	
NOTED BY	
QUANTITIES BY	
CHECKED BY	