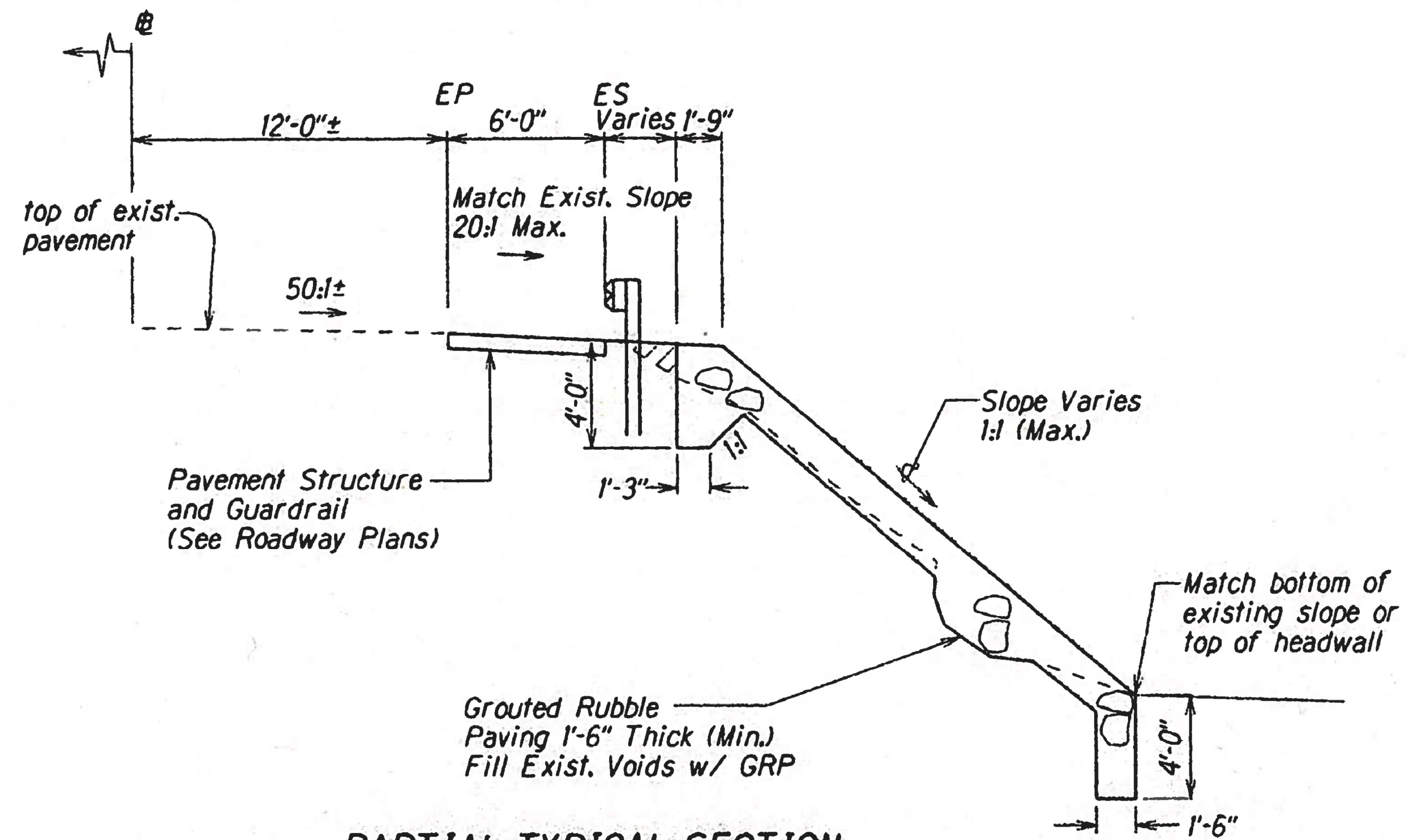


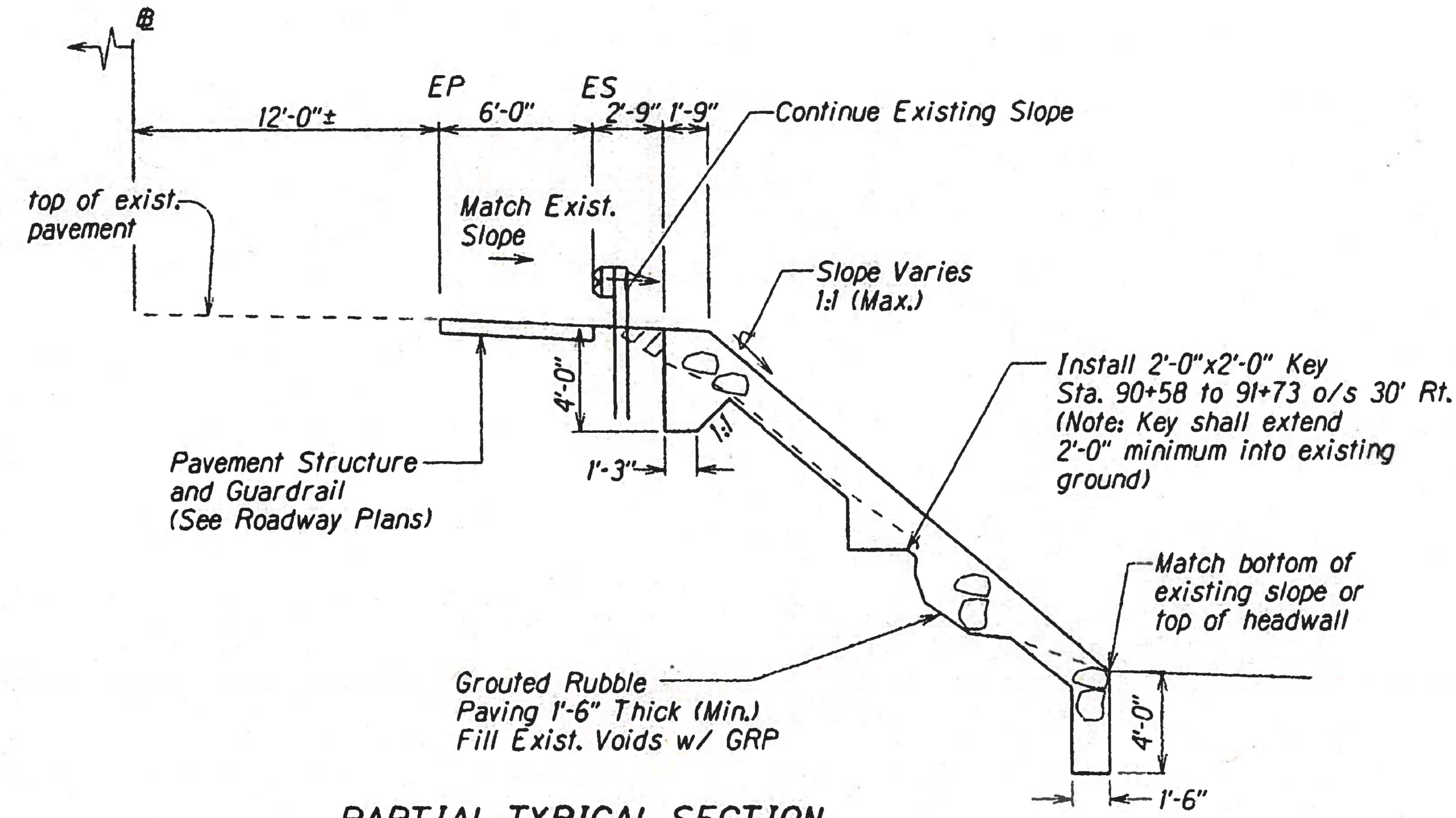
FED. ROAD DIST. NO.	STATE	PROJ. NO.	FISCAL YEAR	SHEET NO.	TOTAL SHEETS
HAWAII	HAW.	30C-02-20M	2022	9	15

"REF. AS-BUILT PLANS" HSIP-030-1(45) 2019 28 48

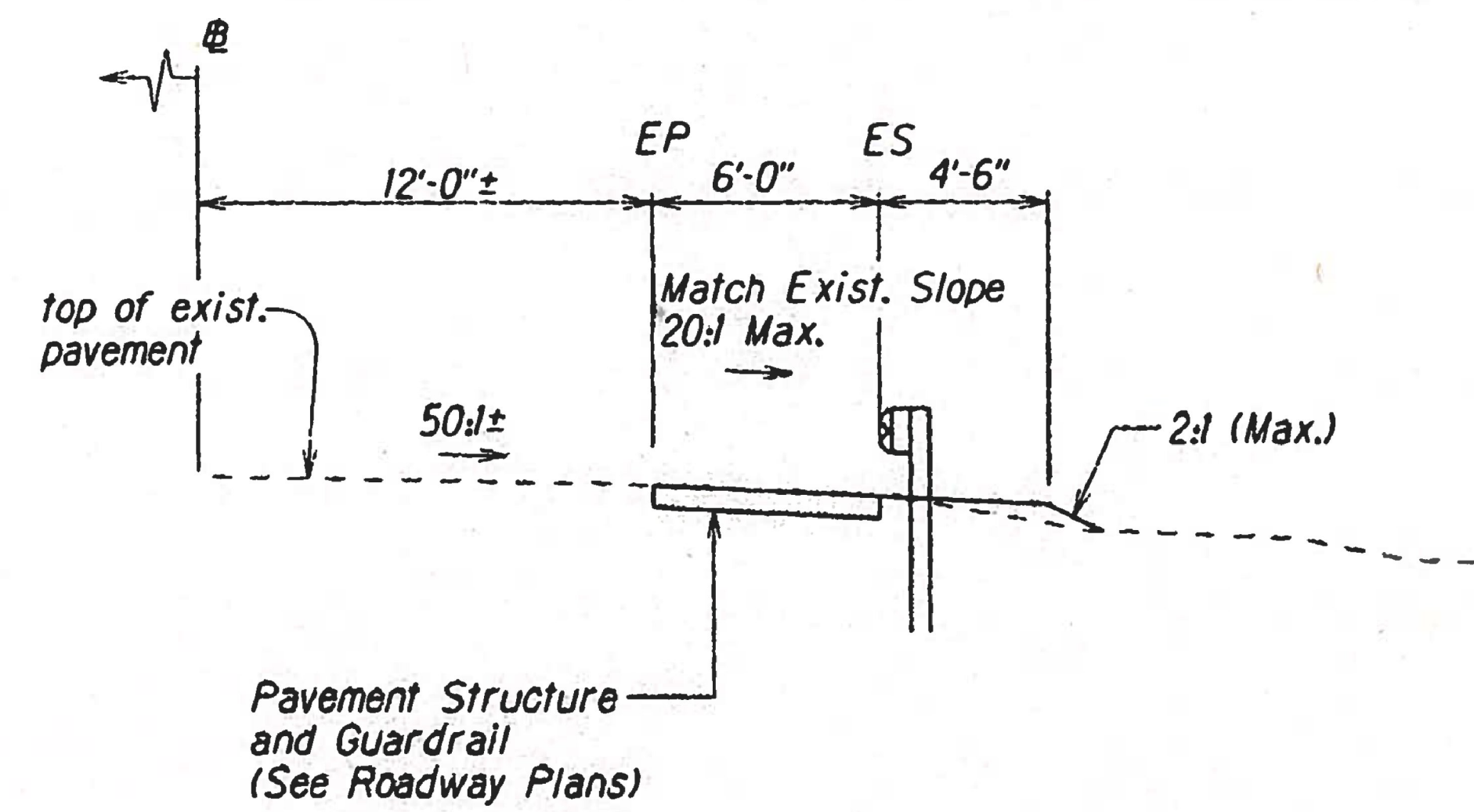
"FOR INFORMATION ONLY"
"AS-BUILT PLAN"



PARTIAL TYPICAL SECTION
STA. 88+40± RT. TO STA. 88+57± RT.
88+50 +/-



PARTIAL TYPICAL SECTION
STA. 89+68± RT. TO STA. 93+03± RT.
89+15 +/- 93+00 +/-



PARTIAL TYPICAL SECTION
STA. 88+57± RT. TO STA. 89+72± RT.
88+50 +/- 89+15 +/-

TYPICAL SECTIONS
Scale: 1/4"=1'-0"

LEGEND FOR AS-BUILT POSTINGS	
	Squiggly line for as-built deletion
	Double line for as-built deletion
Roadway	Text for as-built posting

STATE OF HAWAII
DEPARTMENT OF TRANSPORTATION
HIGHWAYS DIVISION

TYPICAL SECTION

HONOAPIILANI HIGHWAY CULVERT INLET REPAIR
Vicinity of Kaheawa Wind Farm Access Road
Project No. 30C-02-20M

Date: November, 2021

SHEET No. 1 OF 1 SHEETS

DATE	
DESIGNED BY	
TRACED BY	
NOTE BOOK	
QUANTITIES BY	
CHECKED BY	
No.	