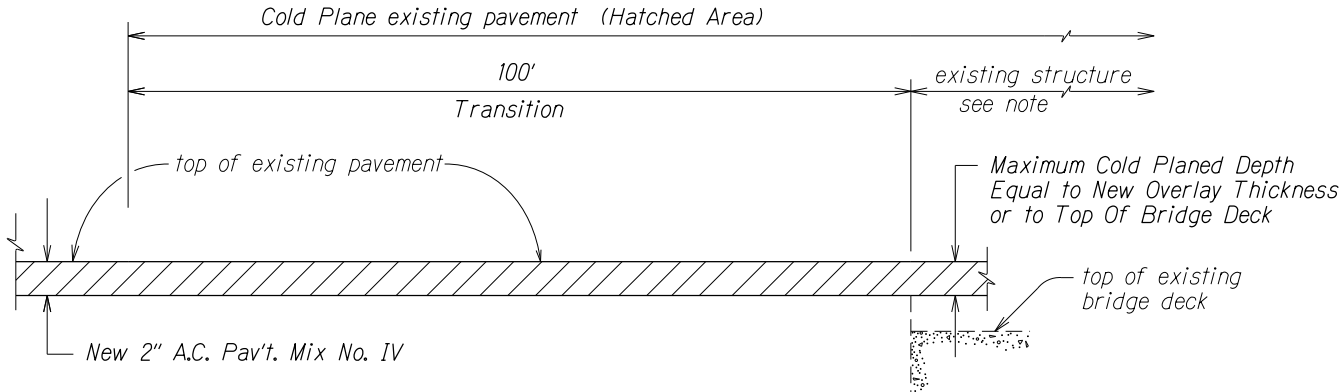
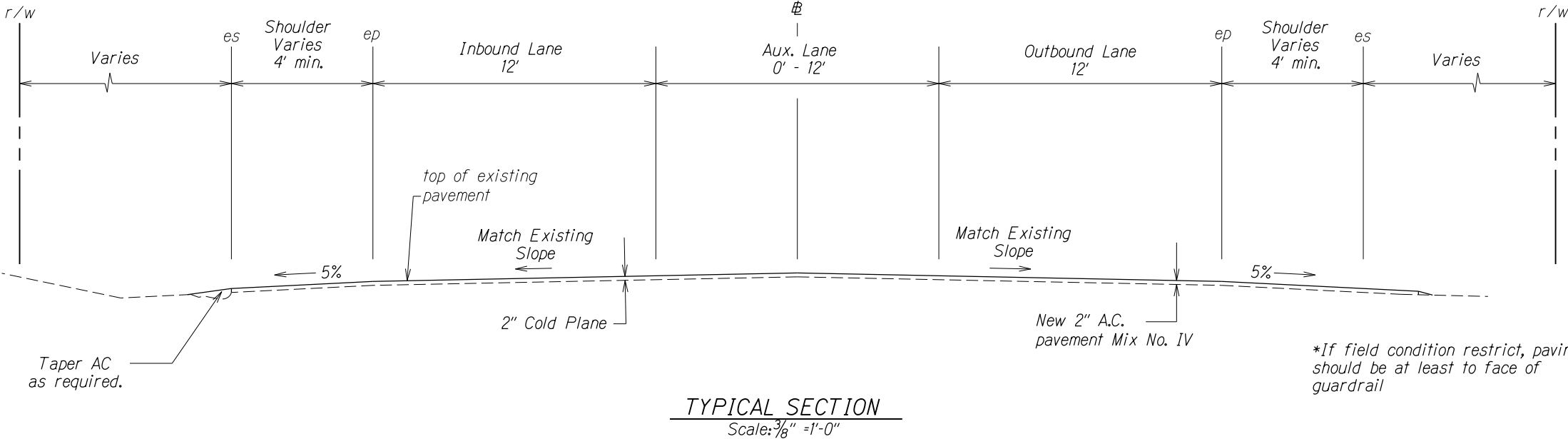


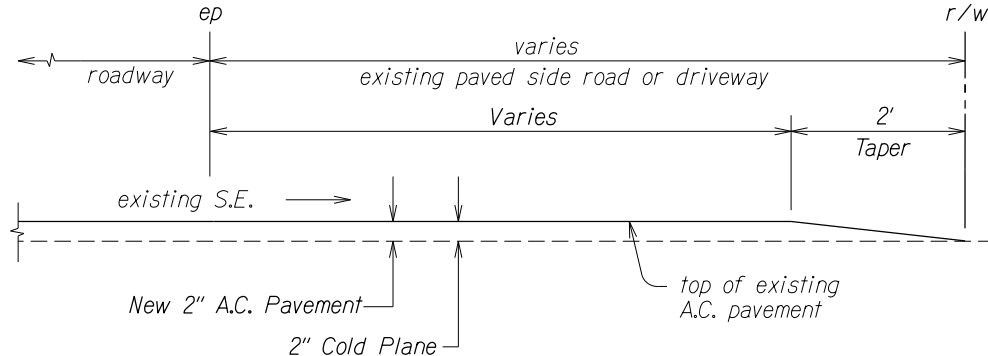
FED. ROAD DIST. NO.	STATE	FED. AID PROJ. NO.	FISCAL YEAR	SHEET NO.	TOTAL SHEETS
HAWAII	HAW.	NH-030-1(057)	2019	7	22



Note: In cold planing the pavement over the structure, the Contractor shall exercise care not to damage any portion of the structure, especially the slab, joints, drainage pipes or reinforcement. Any damage to the structure during the cold planing operations shall be repaired by the Contractor at his expense. Repair work shall be directed by the Engineer. The Contractor shall verify the thickness of the pavement by taking several measurements throughout the structure.

COLD PLANED TRANSITION AND RESURFACING OVER EXISTING STRUCTURE

Not to Scale



A. C. RESURFACING AT PAVED SIDEROAD
OR PAVED DRIVEWAY DETAIL

Not To Scale

ORIGINAL PLAN	SURVEY PLOTTED BY _____	DATE <u>2/18</u>
NOTE BOOK me3,addy	TRACED BY _____	
4110nmis1.dgn	DESIGNED BY <u>AR</u>	
	QUANTITIES BY _____	
	CHECKED BY _____	

STATE OF HAWAII
DEPARTMENT OF TRANSPORTATION
HIGHWAYS DIVISION

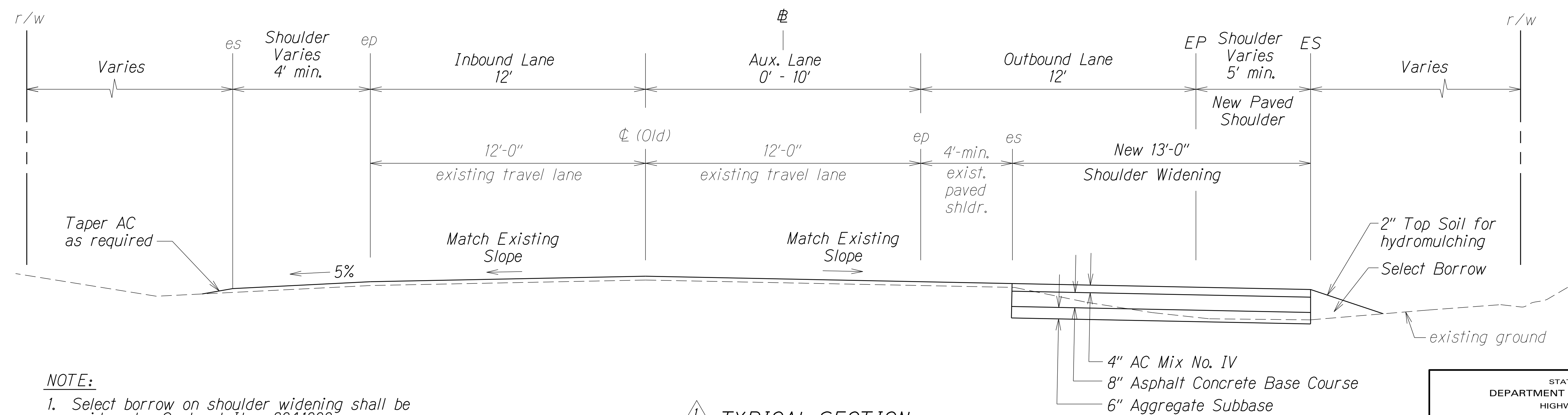
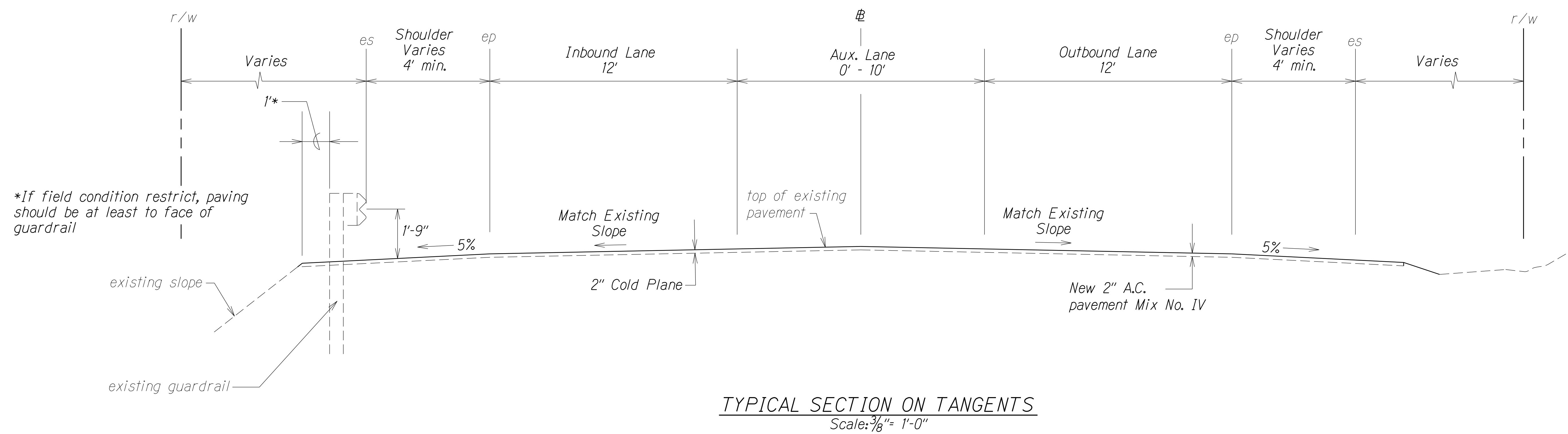
TYPICAL SECTIONS & DETAILS

HONOAPIILANI HIGHWAY RESURFACING
Vicinity of Puamana Beach Park to Aholo Road
Federal-Aid Project No. NH-030-K(057)

Scale: As Shown *Date: October, 2017*

SHEET No. 1 OF 3 SHEETS

FED. ROAD DIST. NO.	STATE	FED. AID PROJ. NO.	FISCAL YEAR	SHEET NO.	TOTAL SHEETS
HAWAII	HAW.	NH-030-1(057)	2019	ADD.8	22



NOTE:

1. Select borrow on shoulder widening shall be paid under Contract Item 204.1000.

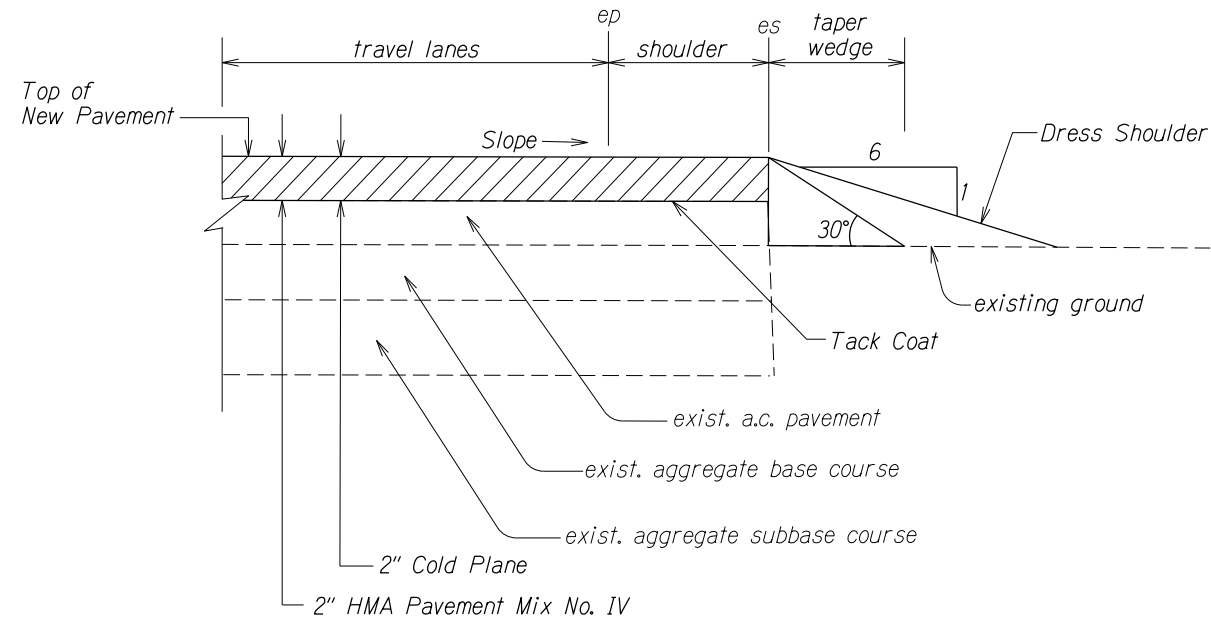
TYPICAL SECTION
STA. 166+00 TO # STA. 163+00
Scale: $\frac{3}{8}" = 1'-0"$

DATE	REVISION
9/25/19	Delete Typical Section Sta. 166+00 to Sta. 163+00.

STATE OF HAWAII DEPARTMENT OF TRANSPORTATION HIGHWAYS DIVISION
TYPICAL SECTIONS & DETAILS
HONOAPIILANI HIGHWAY RESURFACING Vicinity of Puamana Beach Park to Aholo Road Federal-Aid Project No. NH-030-1(057)
Scale: As Shown Date: October, 2017
SHEET No. 2 OF 3 SHEETS

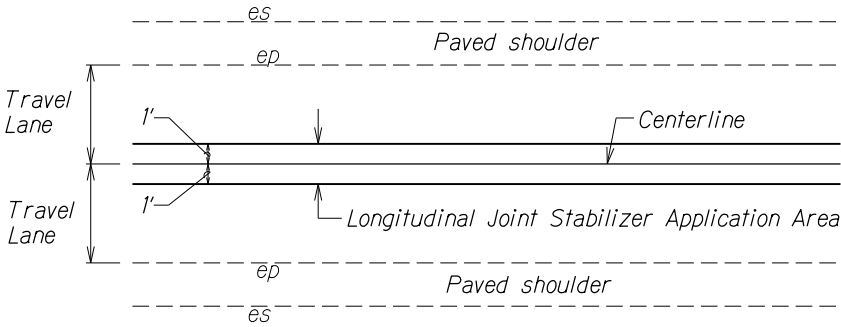
DATE	2/18
SURVEY PLOTTED BY	AE
DRAWN BY	AE
DESIGNED BY	AE
CHECKED BY	AE
NOTE BOOK	me316604
PROJECT NO.	2000152.dgn

FED. ROAD DIST. NO.	STATE	FED. AID PROJ. NO.	FISCAL YEAR	SHEET NO.	TOTAL SHEETS
HAWAII	HAW.	NH-030-1(057)	2019	9	22

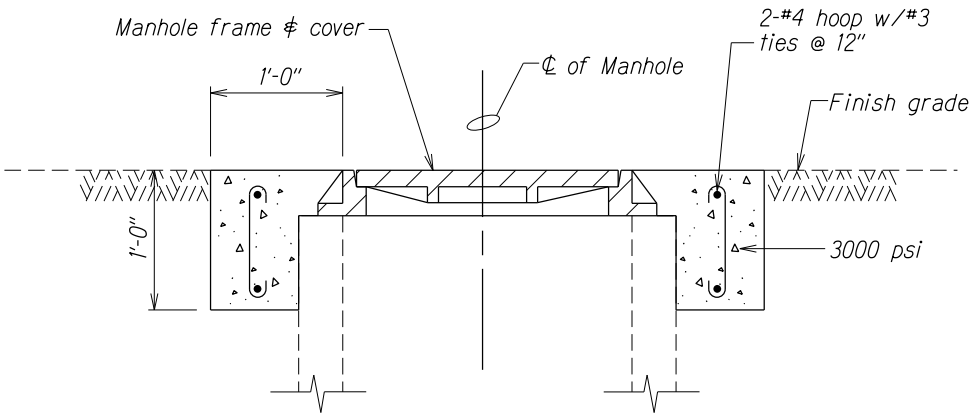


Note: Contractor shall mount a device directly on the paver screed extension to provide a 30° beveled shoulder edge.

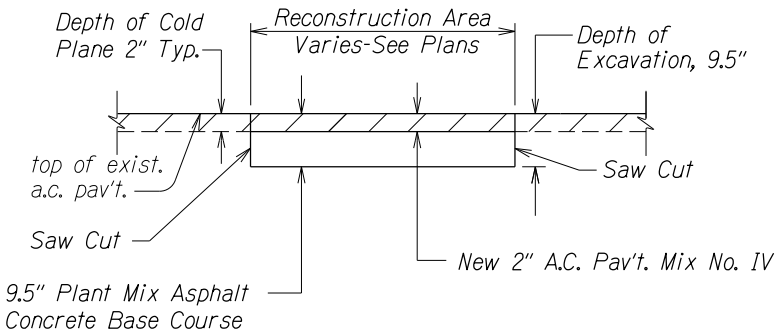
TYPICAL PAVEMENT EDGE DETAIL
Not To Scale



TYPICAL SECTION FOR LONGITUDINAL JOINT STABILIZER
Not To Scale



DETAIL - CONCRETE COLLAR FOR AJUSTMENTS OF MANHOLES AND VALVE BOX
Not To Scale



A.C. PAVEMENT RECONSTRUCTION DETAIL
Not To Scale

Notes for Reconstruction Areas:

1. Reconstruct weakened pavement areas prior to cold plane.
2. The exposed remaining base course or subbase materials should be properly recompact to dense and unyielding conditions prior to placement of the asphalt base layer.

ORIGINAL PLAN	DATE	2/18
NOTE BOOK	DESIGNED BY	AR
QUANTITIES BY	CHECKED BY	AR
IN	DATE	2/18

STATE OF HAWAII
DEPARTMENT OF TRANSPORTATION
HIGHWAYS DIVISION

TYPICAL SECTIONS & DETAILS

HONOAPIILANI HIGHWAY RESURFACING
Vicinity of Puamana Beach Park to Aholo Road
Federal-Aid Project No. NH-030-1(057)

Scale: As Shown Date: October, 2017

SHEET No. 3 OF 3 SHEETS