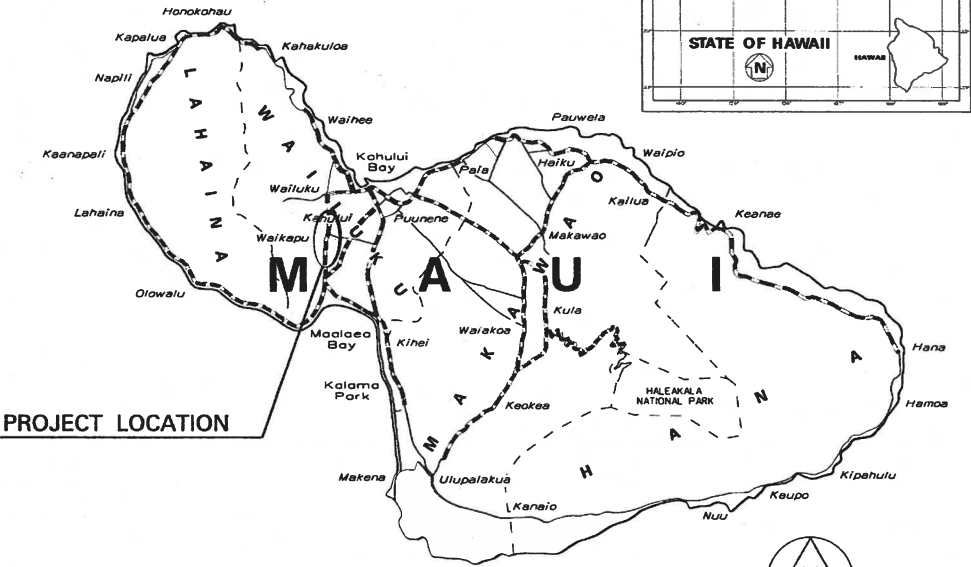
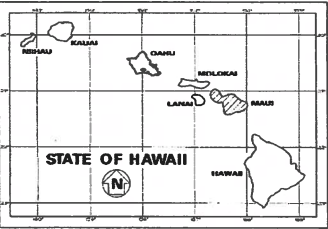


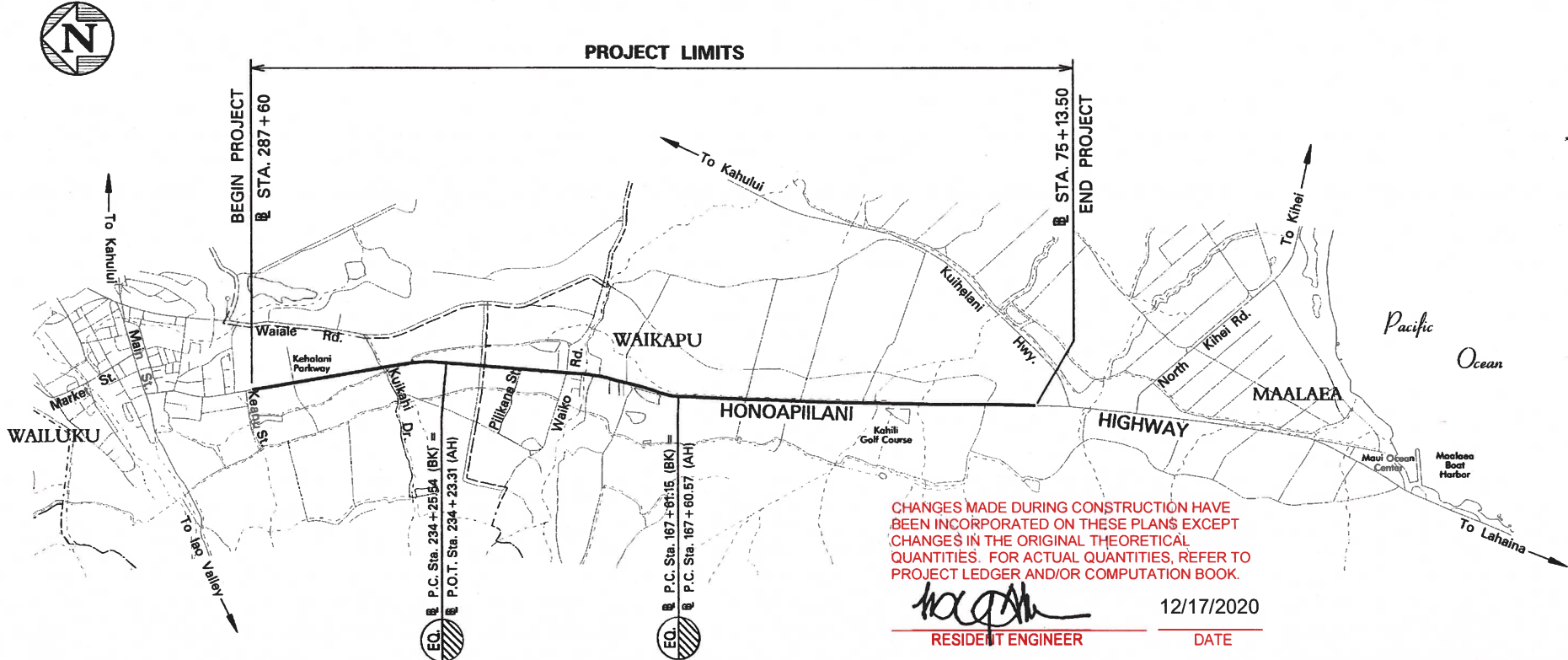
INDEX TO DRAWINGS	
SHEET NO.	DESCRIPTION
1	TITLE SHEET
2	STANDARD PLANS SUMMARY
3	GENERAL NOTES & LEGEND
4 - 6	WATER POLLUTION & EROSION CONTROL NOTES
7 - 10	TYPICAL SECTIONS & DETAILS
11 - 14	GUARDRAIL DETAILS & NOTES
15 - 24	ROADWAY PLANS
25	PAVEMENT MARKING LEGEND, DETAILS & NOTES
26 - 27	RUMBLE STRIP DETAILS & NOTES
28 - 30	TRAFFIC COUNTING STATION DETAILS
31	WORK ZONE SIGNING PLAN, NOTES & DETAILS
32 - 41	SIGNING & PAVEMENT MARKING PLANS

STATE OF HAWAII
DEPARTMENT OF TRANSPORTATION
HIGHWAYS DIVISION
HONOLULU, HAWAII
"AS-BUILT"
PLANS FOR
HONOAPIILANI HIGHWAY RESURFACING
KEANU STREET TO KUIHELANI HIGHWAY
FEDERAL-AID PROJECT NO. NH-030-1(056)
DISTRICT OF WAILUKU
ISLAND OF MAUI

FED. ROAD DIST. NO.	STATE	FED. AID PROJ. NO.	FISCAL YEAR	SHEET NO.	TOTAL SHEETS
HAWAII	HAW.	NH-030-1(056)	2019	1	41



SCALE IN MILES
0 5 10



FEDERAL AID PROJECTS PREVIOUSLY CONSTRUCTED OR UNDER CONSTRUCTION

MILE POST 0.55 TO MILE POST 4.90

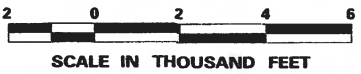
DESIGN DESIGNATION	
TRAFFIC DATA	KEANU STREET TO KUIHELANI HIGHWAY Route 30 (0.53 MP to 4.88 MP)
ADT (2017)	15,500
ADT (2027)	17,600
DHV	1,410
DESIGN K	8.0
DESIGN D	55/45
DESIGN T	3.0
T24	3.5

CHANGES MADE DURING CONSTRUCTION HAVE BEEN INCORPORATED ON THESE PLANS EXCEPT CHANGES IN THE ORIGINAL THEORETICAL QUANTITIES. FOR ACTUAL QUANTITIES, REFER TO PROJECT LEDGER AND/OR COMPUTATION BOOK.

RESIDENT ENGINEER
12/17/2020
DATE

LAYOUT PLAN

GROSS LENGTH OF PROJECT.....4.35 MILES
NET LENGTH OF PROJECT.....4.35 MILES



As-Built Drawings

Signature

DEPARTMENT OF TRANSPORTATION
STATE OF HAWAII
APPROVED:

DIR. OF TRANSPORTATION
7/1/19
DATE

DESIGNED BY
HWY-M
MANAGED BY
HWY-ME
873-3535
PHONE
MAR. 2018
DATE