

FED. ROAD DIST. NO.	STATE	FED. AID PROJ. NO.	FISCAL YEAR	SHEET NO.	TOTAL SHEETS
HAWAII	HAW.	NH-030-1(053)	2015	8	28

GENERAL NOTES

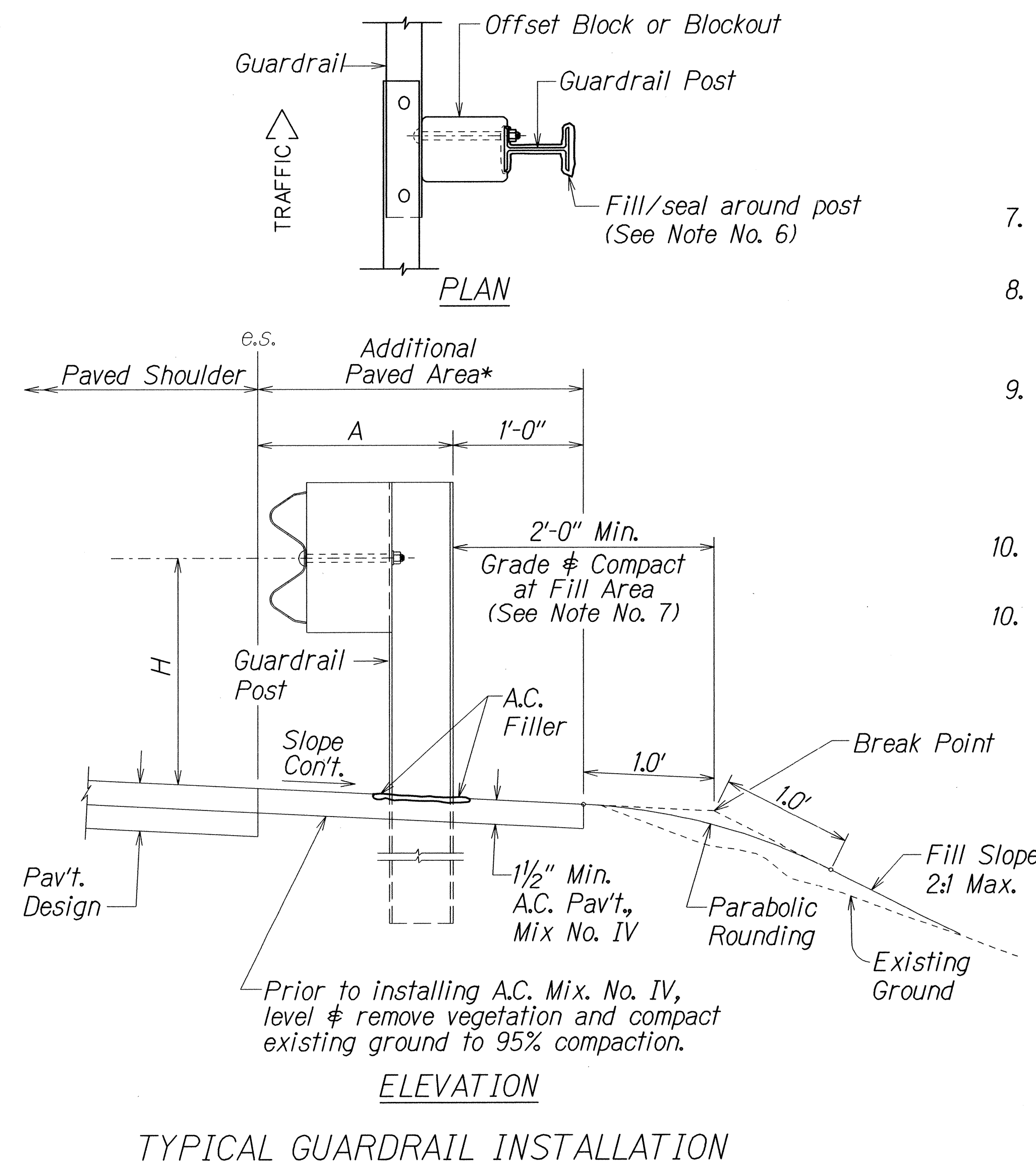
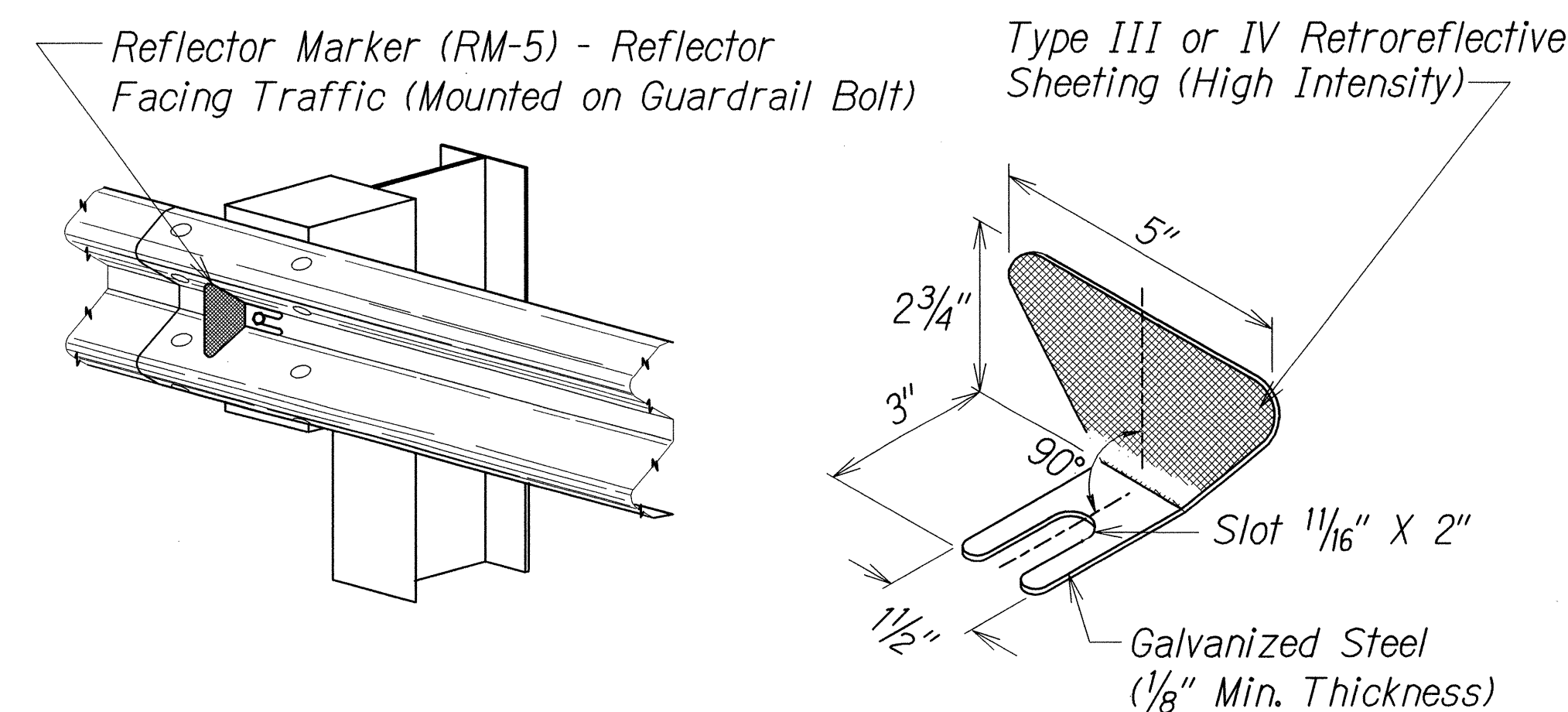
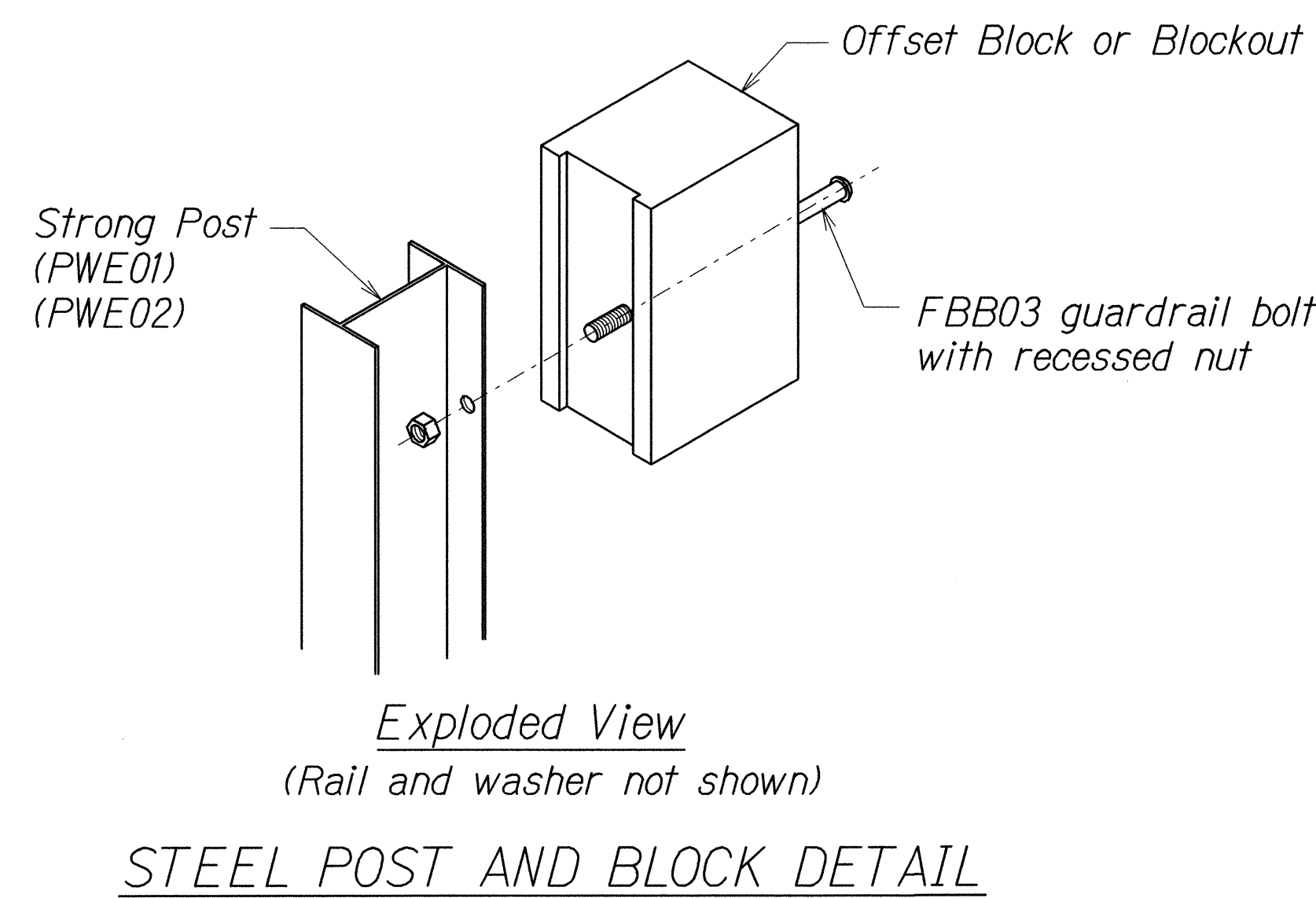
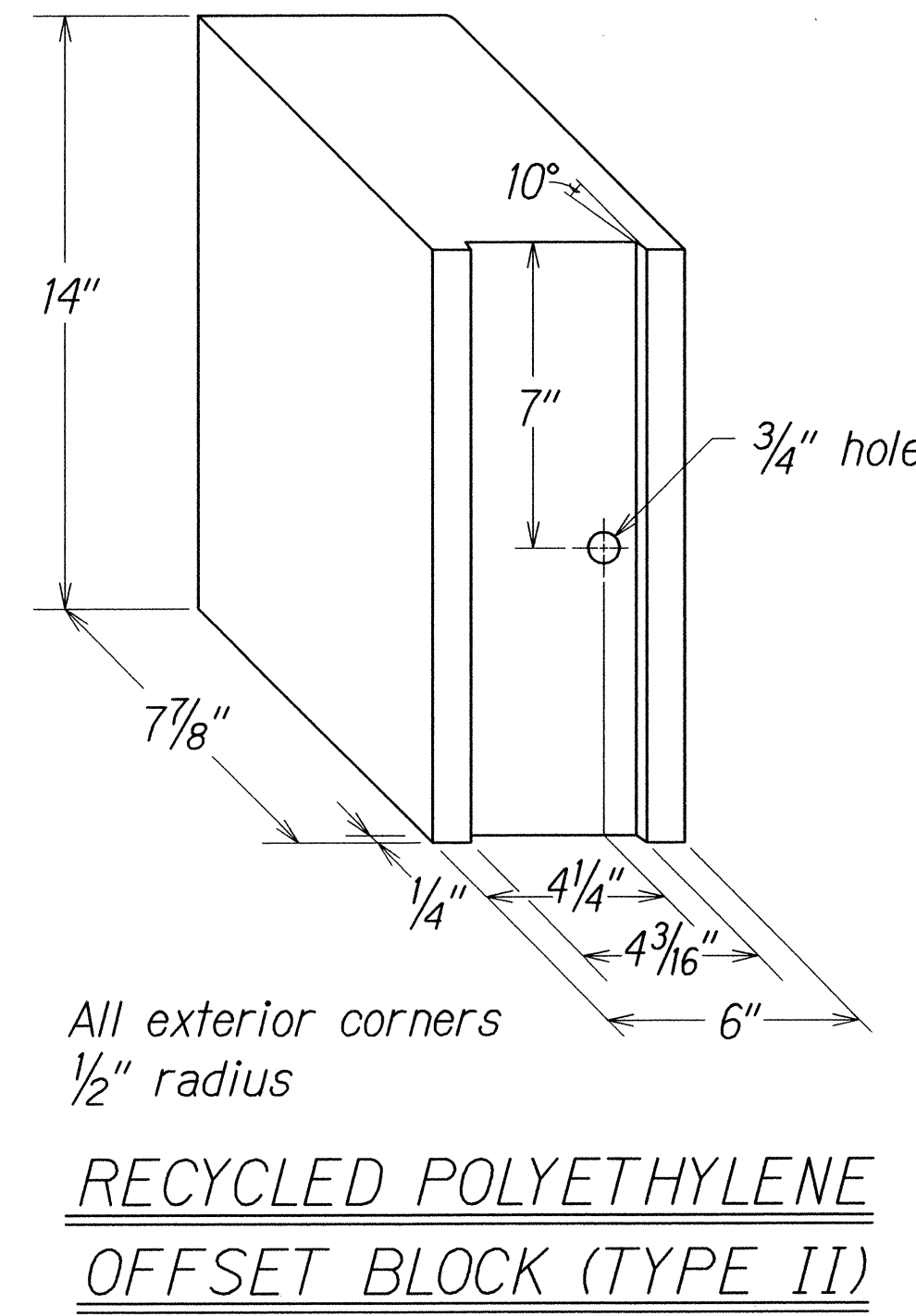
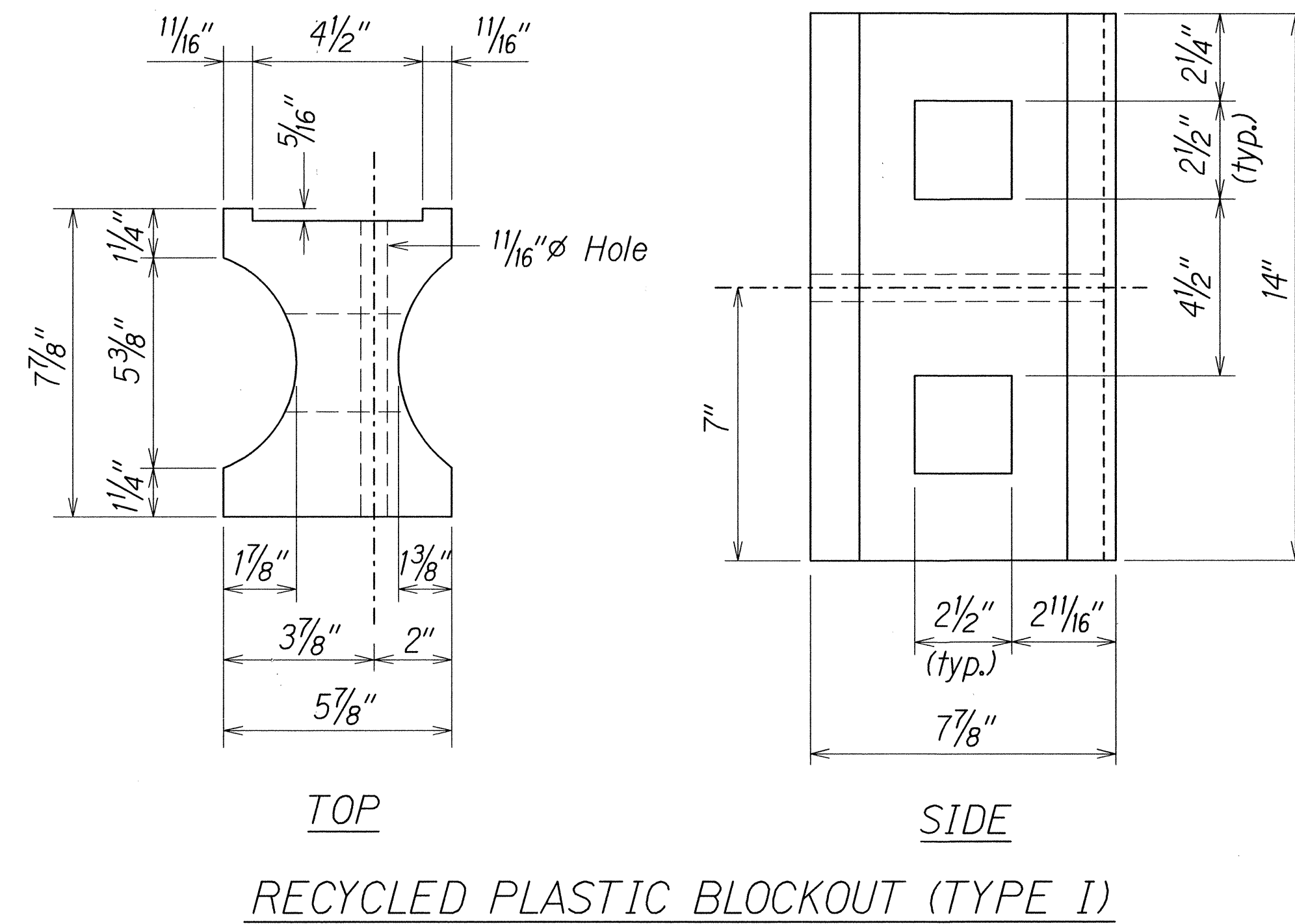
- All hardware, posts and fasteners shall be hot-dip zinc coated galvanized after fabrication. No punching, drilling or cutting will be permitted after galvanizing.
- Where conditions require, special post lengths in increments of 6 inches may be specified.
- All fasteners, posts, and rail elements (i.e. FBB03, PWE01, RWM02b, etc.) shall conform to the latest edition and amendments of "A Guide to Standardized Highway Barrier Rail Hardware", a report prepared and approved by the AASHTO-AGC-ARTBA Joint Cooperative Committee, Subcommittee On New Highway Materials, Task Force 13 Report. Dimensions of fastners, posts and rail elements have been converted from metric units into their present form.
- The Recycled Plastic Block or Offset Block shall be approved by the State.
- All new guardrail areas, shoulder shall be grubbed, graded and paved as shown on the plan. Paved shoulder width shall be determined in the field and approved by the Engineer. This work will not be paid separately but shall be made under Item 401.0100 A.C. Pavement, Mix IV.
- After the guardrail posts are installed in the paved area, the Contractor shall fill/seal around each guardrail post and all cracks in the paved area caused during the guardrail post installation. If required by the inspector/engineer, the Contractor shall tamper the paved area around the guardrail post prior to filling/sealing. All costs associated with this work shall not be paid for separately, but shall be considered incidental to the various guardrail items.
- When standards for the fill slope area cannot be met, a site specific, engineer approved design may be used.
- New A.C. pavement at guardrails shall extend 6 feet longitudinally beyond terminal ends. This work will not be paid separately but shall be made under Item No. 401.0100 A.C. Pavement, Mix IV.
- Reflector Markers (RM-5) mounted on guardrails shall be spaced every 25 feet. Spacing of RM-5's on Horizontal Curves shall comply with Table III-1 of the MUTCD. RM-5's shall not be installed on Terminal Sections. RM-5 on new guardrail shall be incidental to guardrail pay item.
- Type G end terminals shall be paid for under Strong Post W-Beam Guardrail.
- Removed guardrails and post shall be delivered to State Highways baseyard, Kahului. This work shall not be paid separately but shall be considered incidental to guardrail pay items.

GUARDRAIL TYPE	DIMENSION	
	H	A
Strong Post W-Beam	1'-9 ⁵ / ₈ "	1'-6"
Strong Post Rubrail (W-Beam)	2'-0"	1'-6"
Modified or Strong Post Thrie Beam	2'-0"	2'-0"

STATE OF HAWAII
DEPARTMENT OF TRANSPORTATION
HIGHWAYS DIVISION

GUARDRAIL DETAILS & NOTES
HONOAPIILANI HIGHWAY GUARDRAIL
& SHOULDER IMPROVEMENTS
Vicinity of Ukumehame M.P. 13.2 to M.P. 13.3
Federal-Aid Project No. NH-030-1(053)
Scale: NTS Date: August, 2014

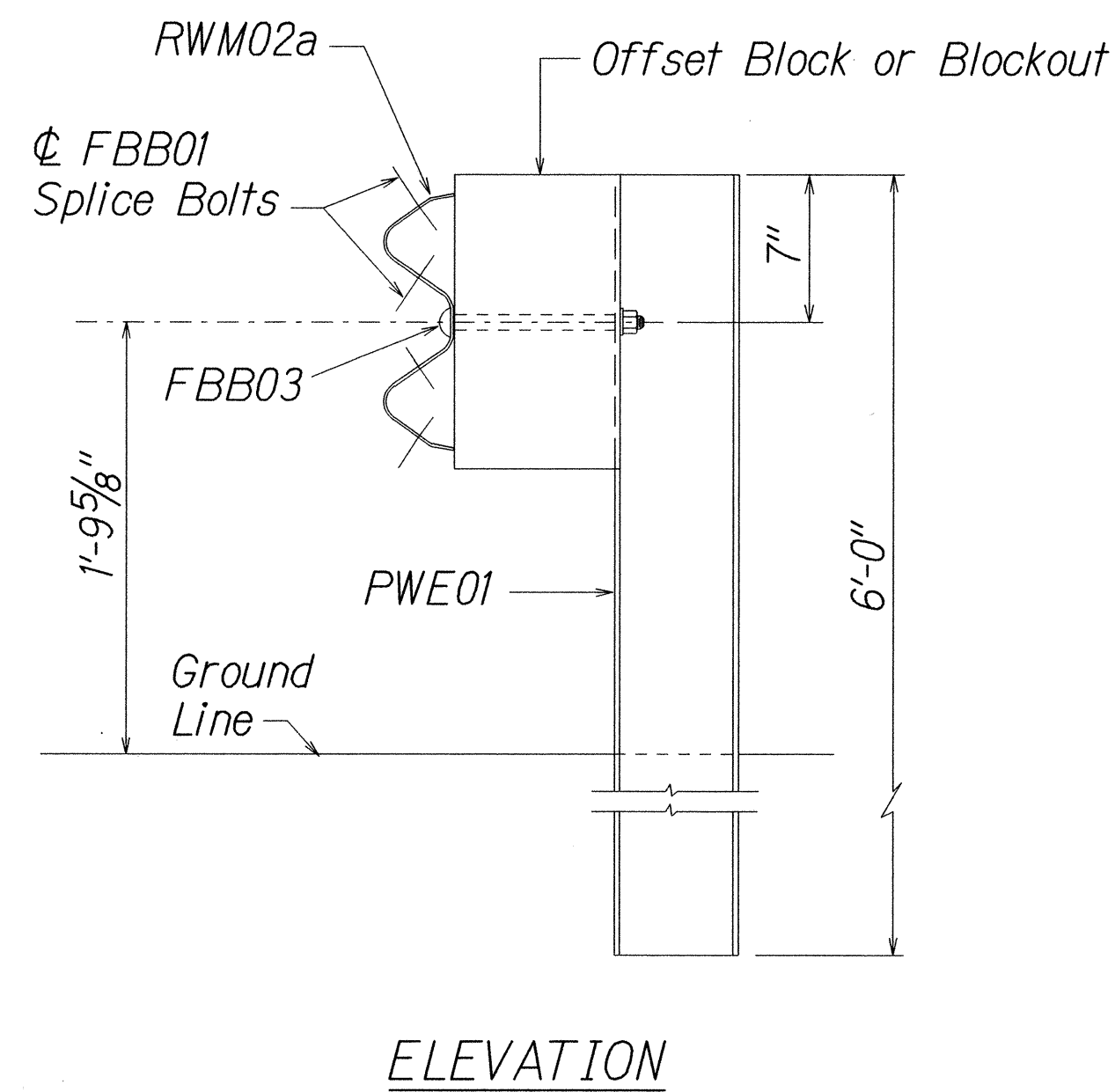
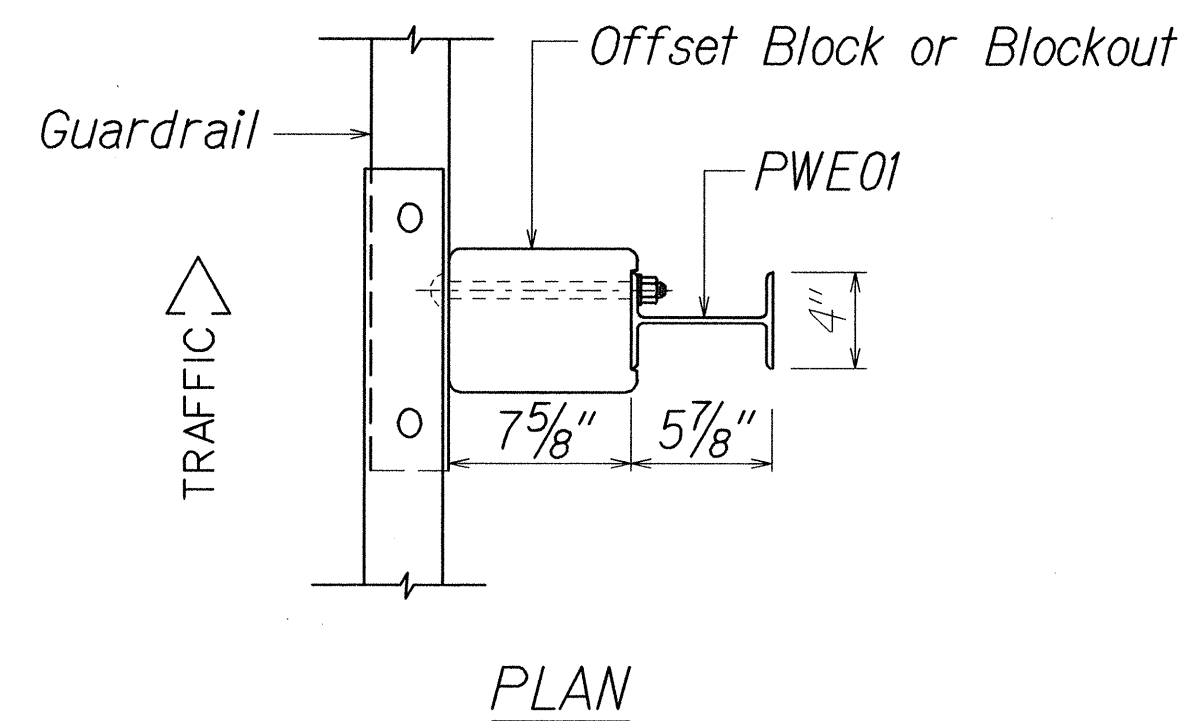
SHEET No. 1 OF 5 SHEETS



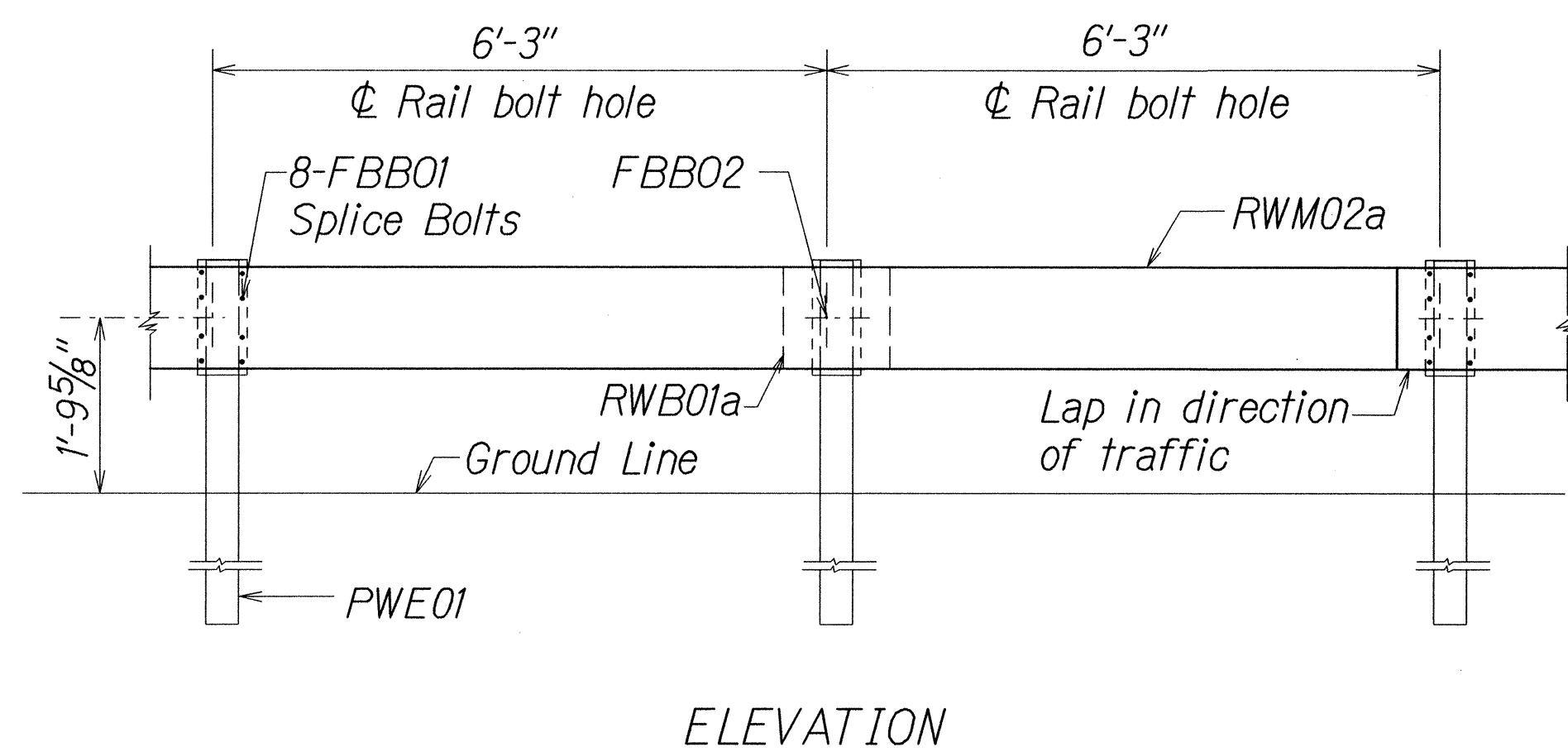
SURVEY PLOTTED BY	DATE
DRAWN BY	
DESIGNED BY	
CHECKED BY	
NOTED BY	
NO.	

Standard plan TE-50 r09/01/00
1d1rubi/guardrail/1650rev.dgn
r8/21/01

FED. ROAD DIST. NO.	STATE	FED. AID PROJ. NO.	FISCAL YEAR	SHEET NO.	TOTAL SHEETS
HAWAII	HAW.	NH-030-1(053)	2015	9	28

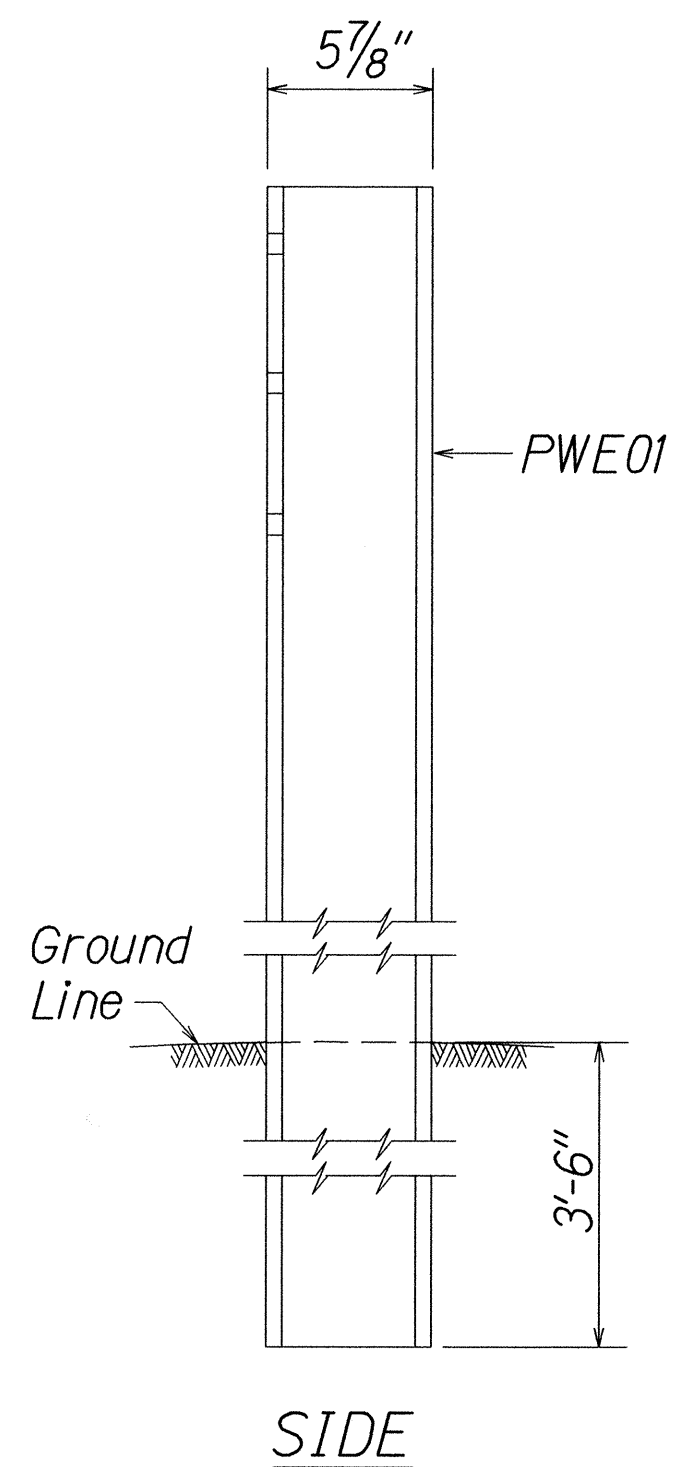


STRONG POST W-BEAM GUARDRAIL
(SGR04a)

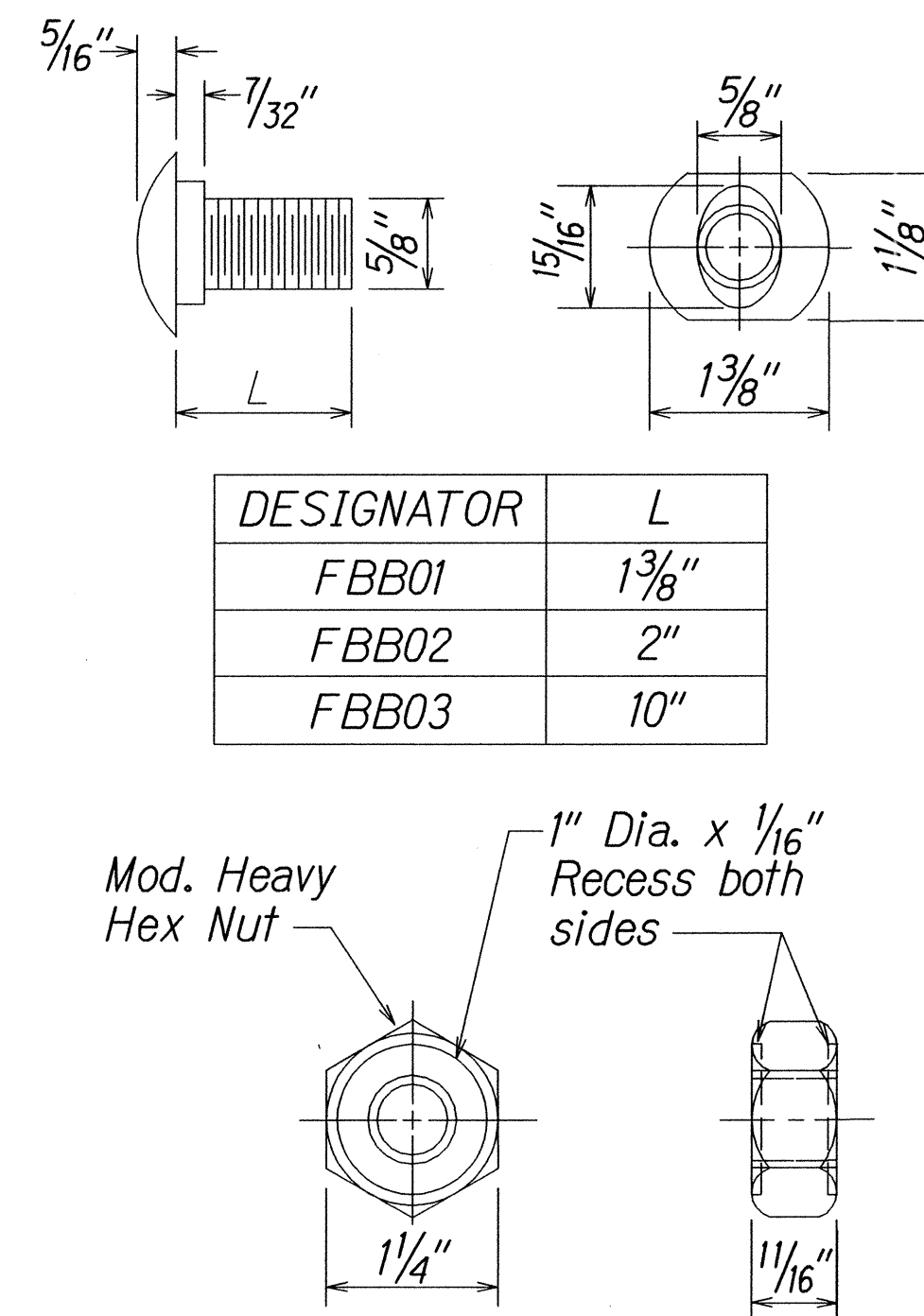
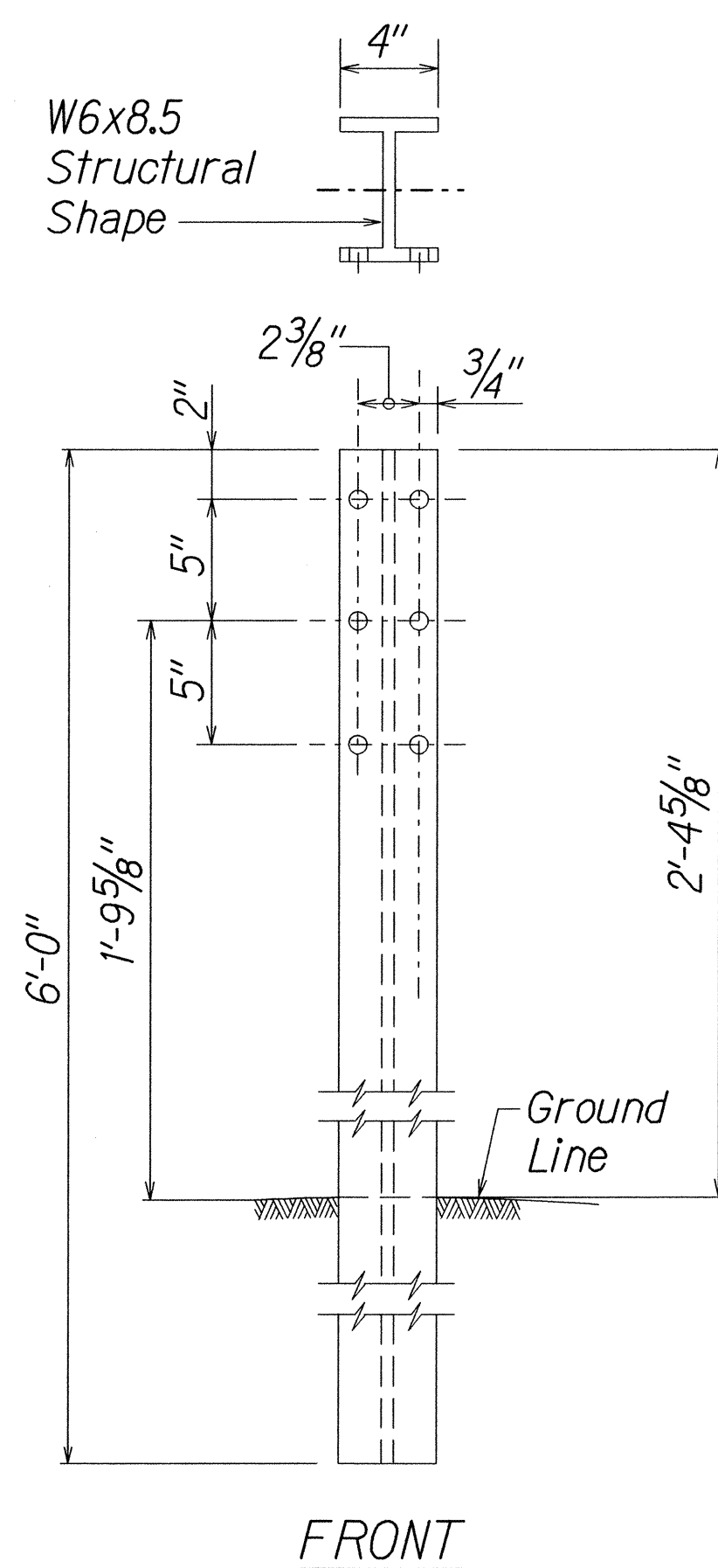


STRONG POST W-BEAM GUARDRAIL WITH
RECYCLED OFFSET BLOCK OR PLASTIC BLOCKOUT

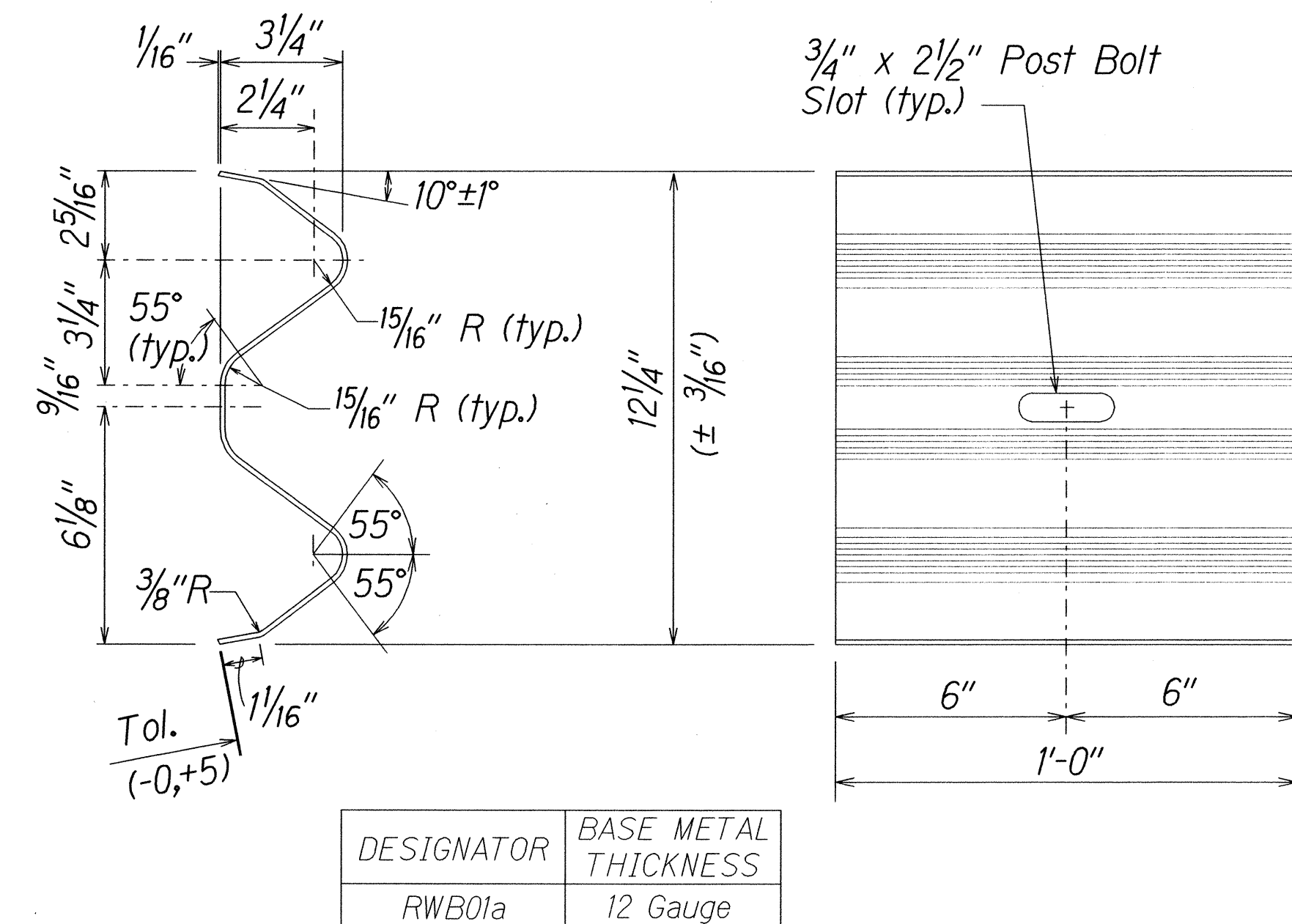
NOTE:
All Holes are
3/4" Dia.



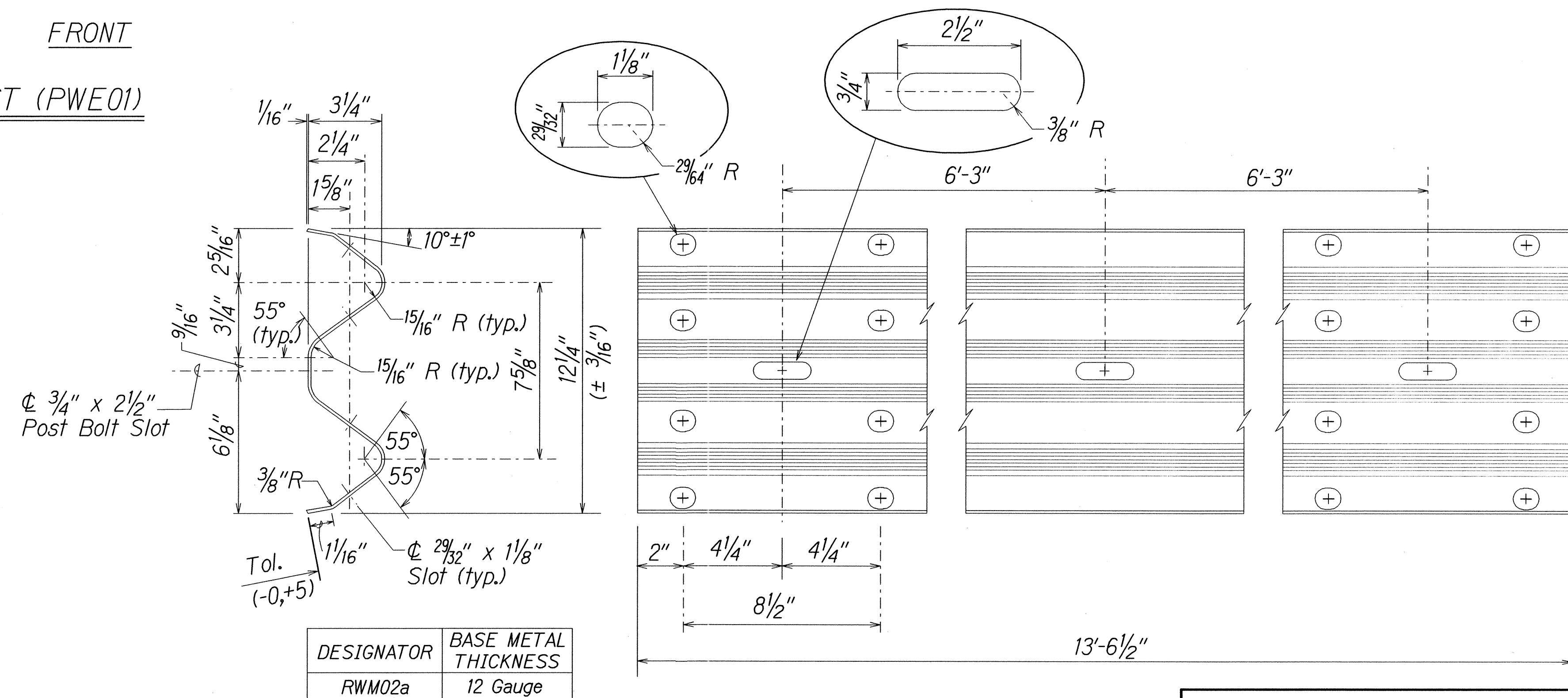
W-BEAM STRONG POST (PWE01)



GUARDRAIL BOLTS AND
RECESSED NUT



W-BEAM BACK-UP-PLATE (RWB01a)



2 SPACE W-BEAM GUARDRAIL (RWM02a)

STATE OF HAWAII
DEPARTMENT OF TRANSPORTATION
HIGHWAYS DIVISION

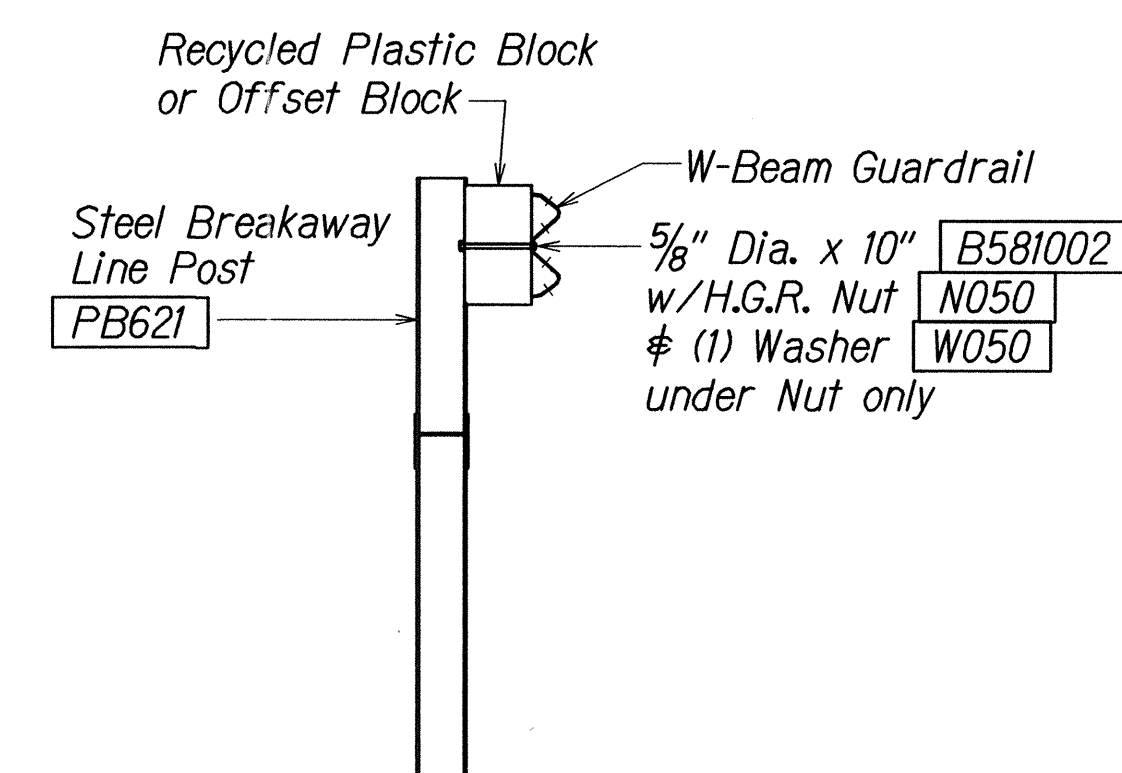
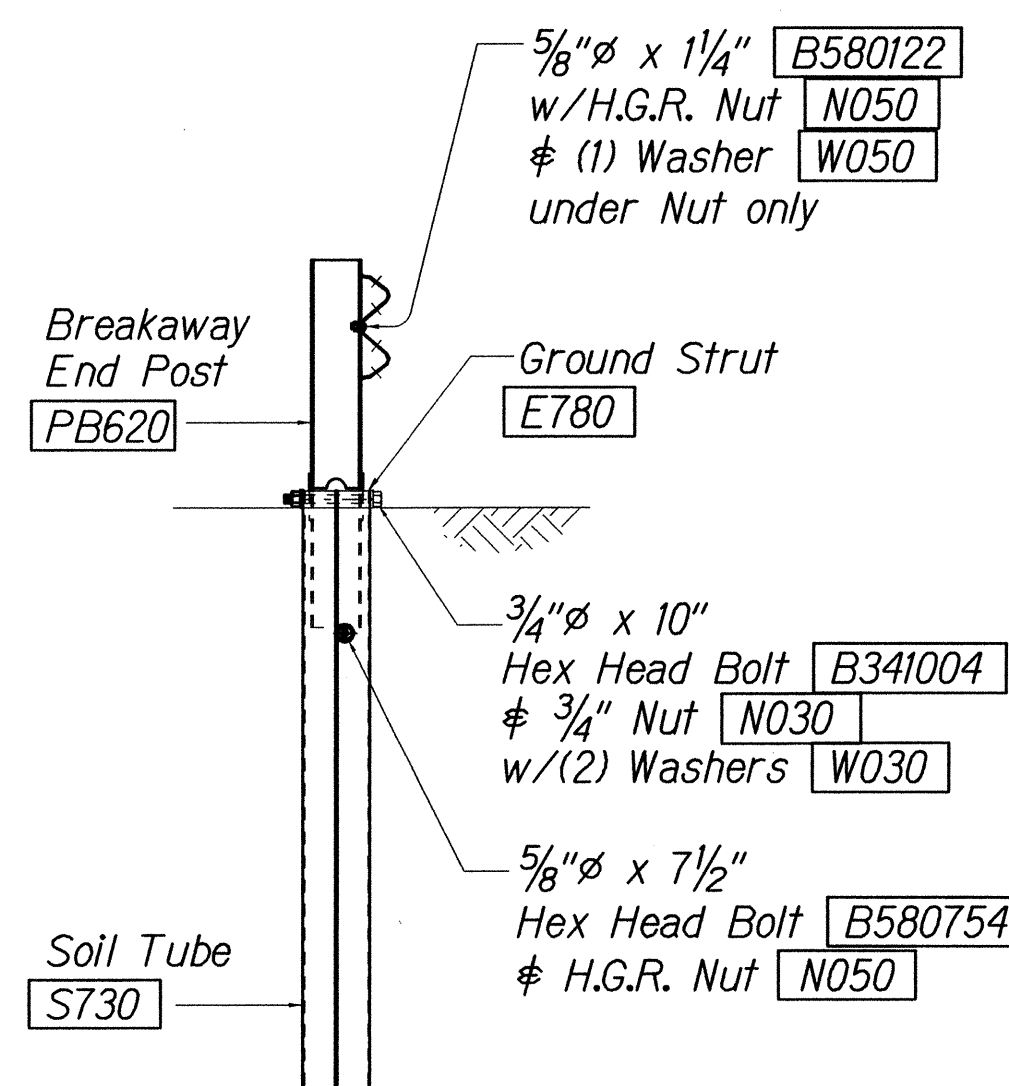
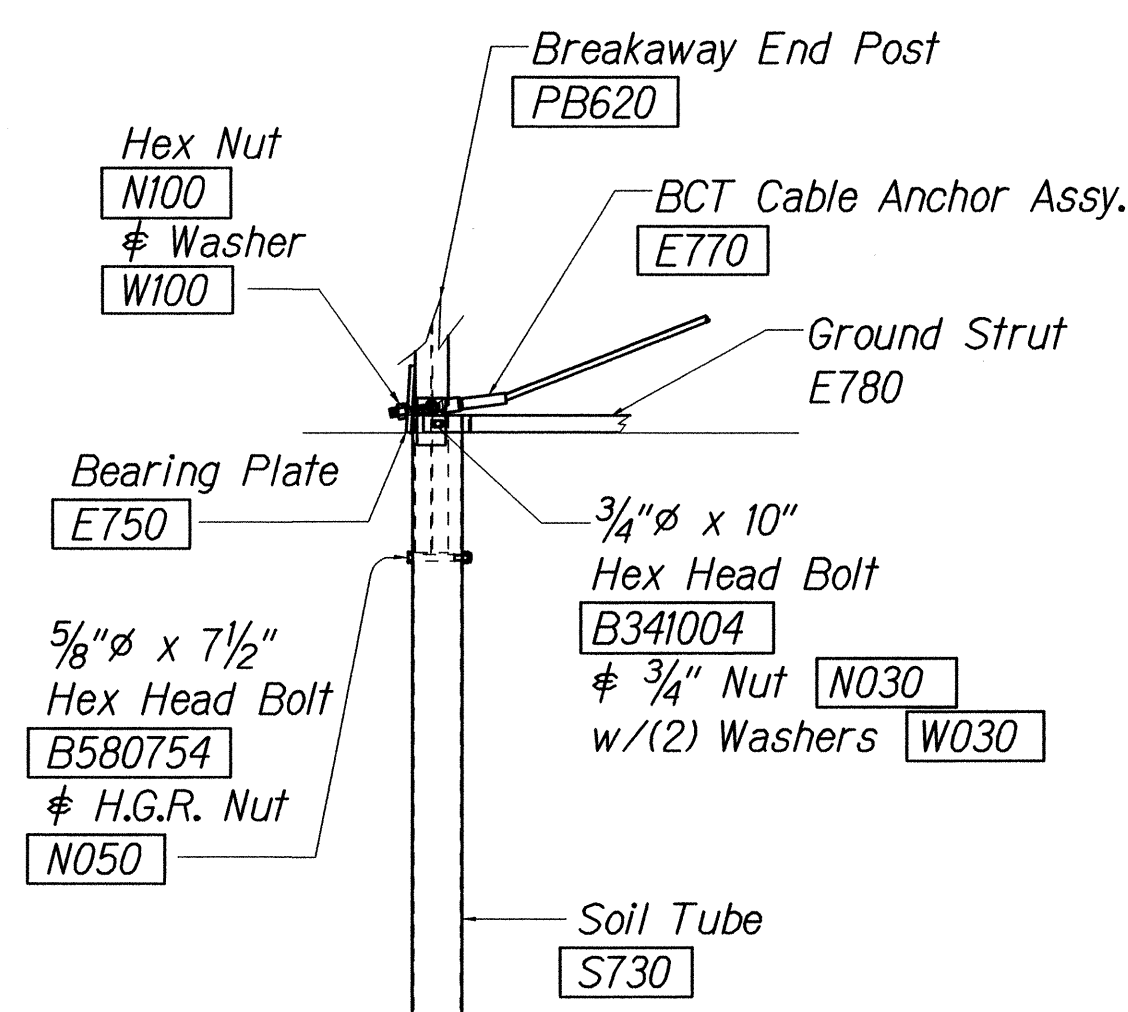
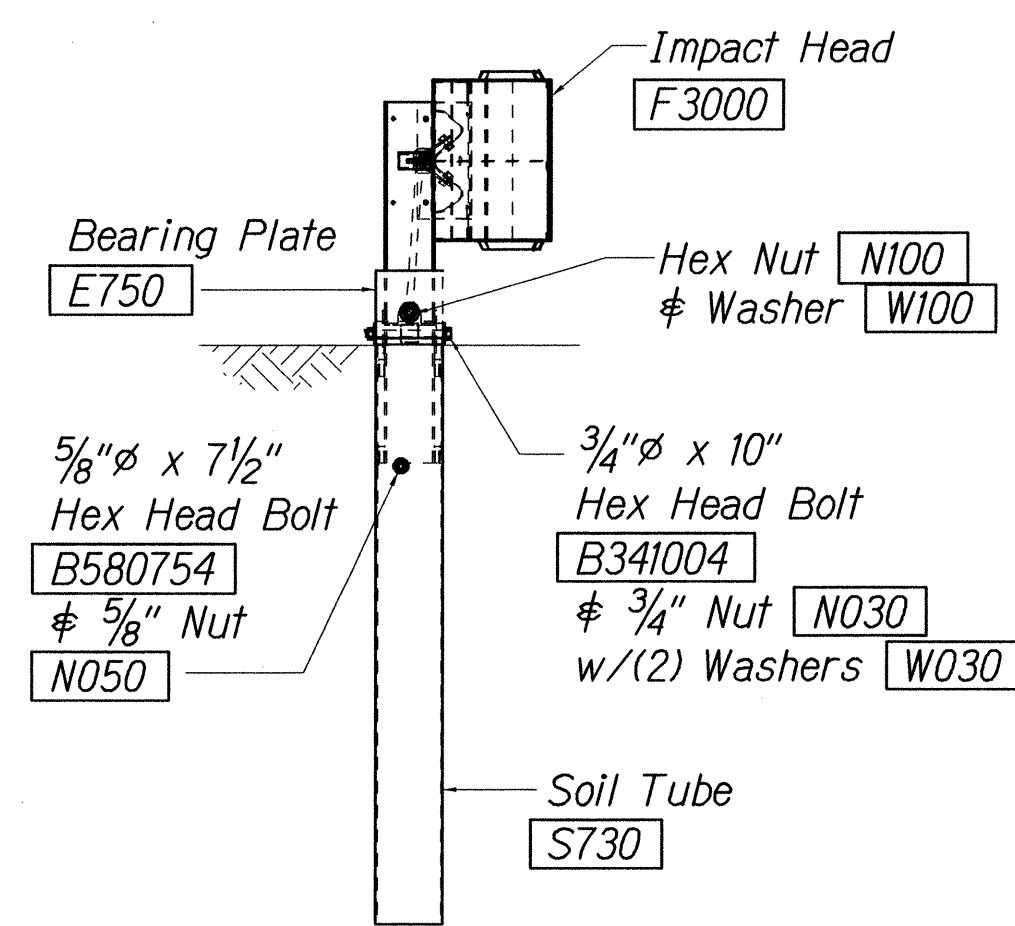
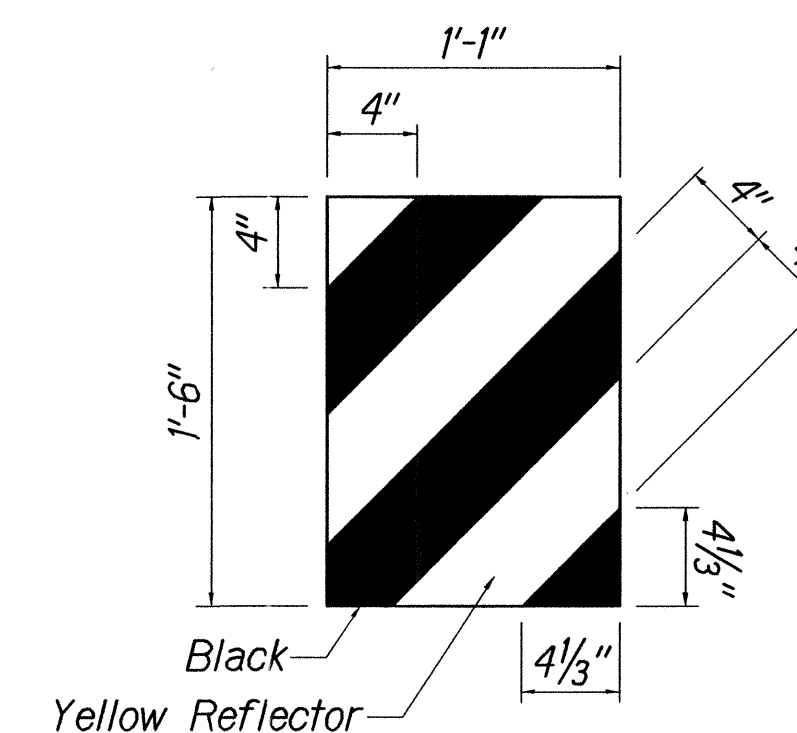
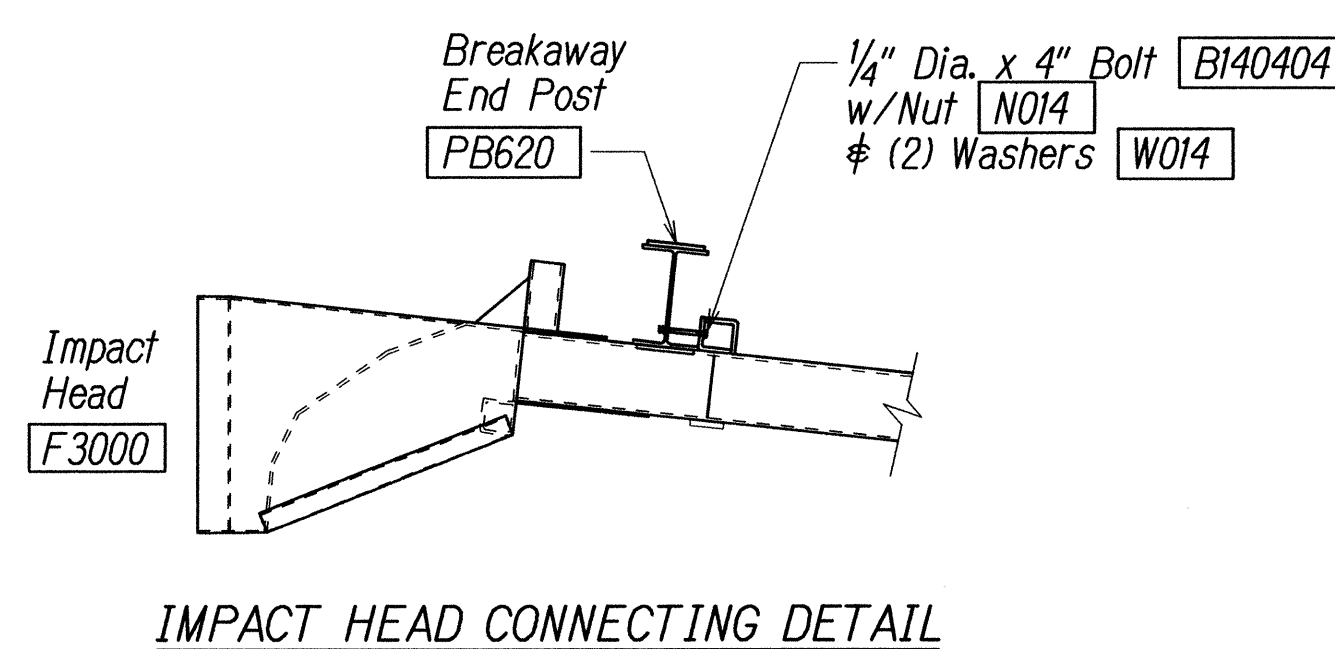
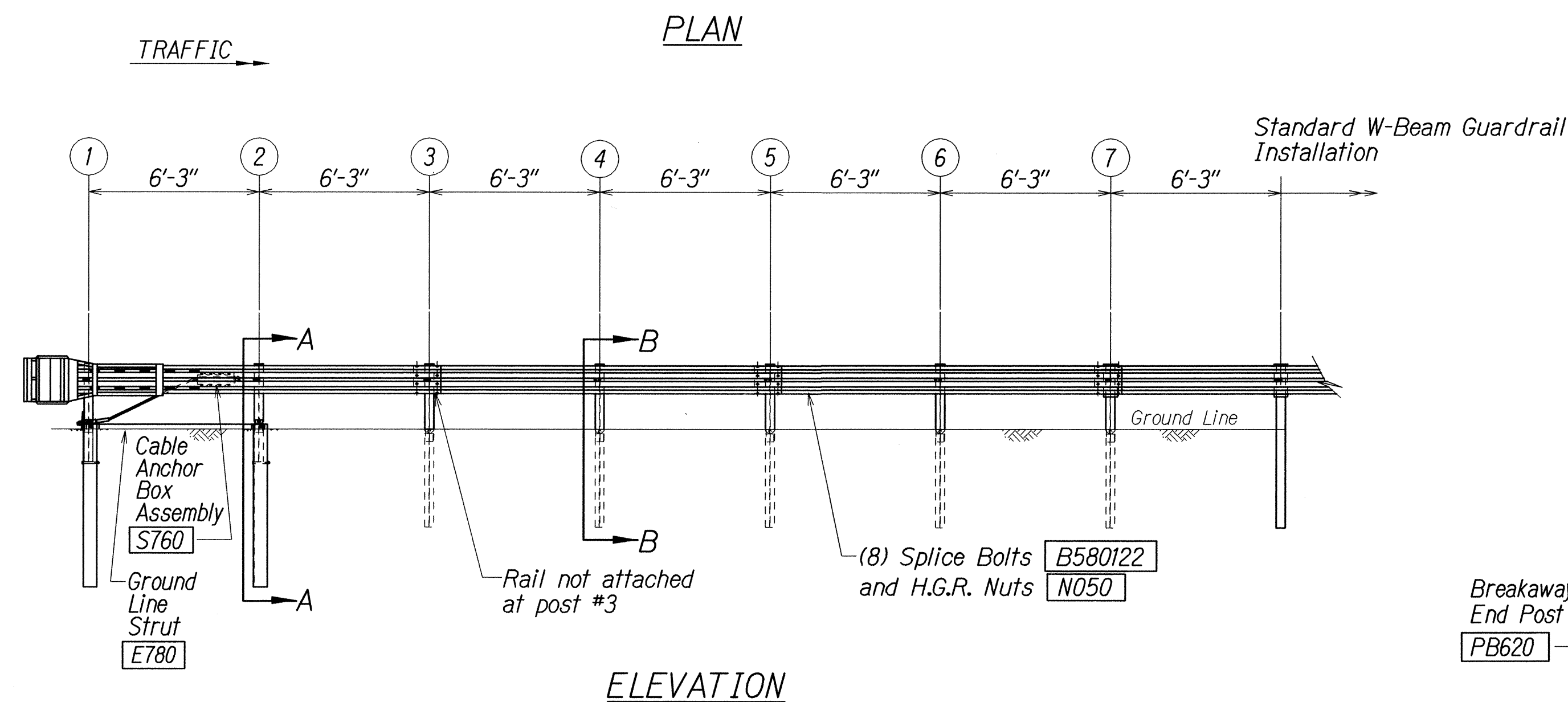
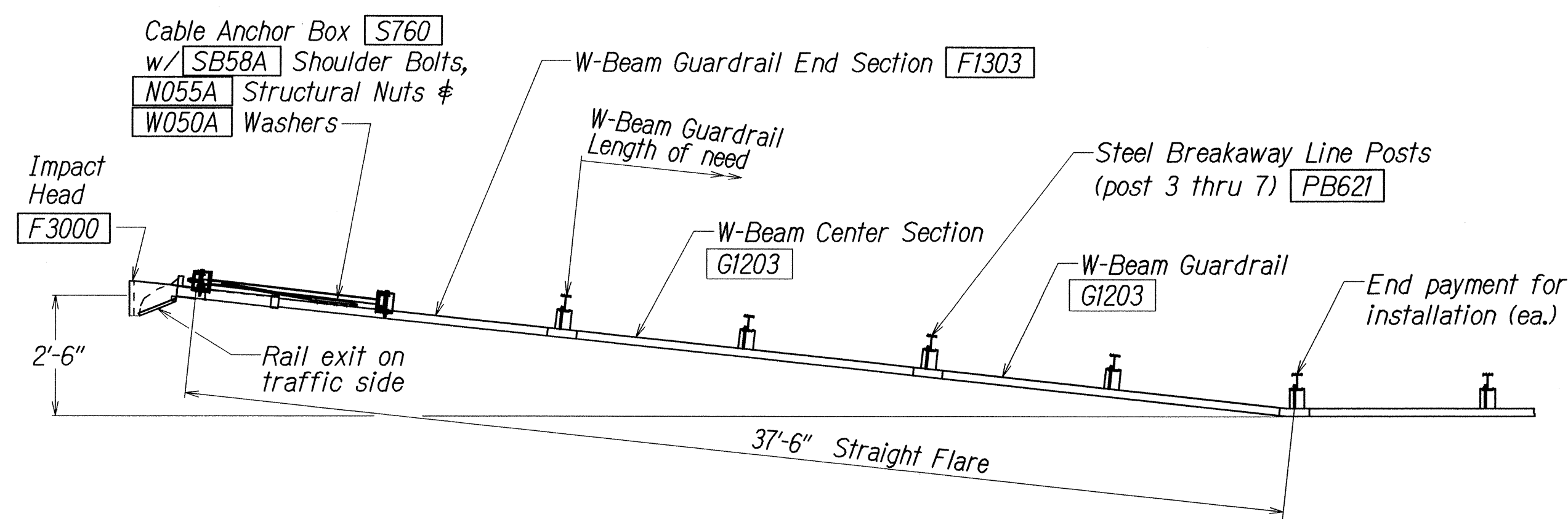
STRONG POST W-BEAM GUARDRAIL
HONOAPIILANI HIGHWAY GUARDRAIL
& SHOULDER IMPROVEMENTS
Vicinity of Ukumehame M.P. 13.2 to M.P. 13.3
Federal-Aid Project No. NH-030-1(053)

Scale: NTS Date: August, 2014

SHEET No. 2 OF 5 SHEETS

ORIGINAL PLAN	SURVEY PLOTTED BY	DATE
NOTE BOOK	DRAWN BY	
	DESIGNED BY	
	CHECKED BY	
	IN CHARGE	

16/13/01 1d/crub/ guardrail/wbeamsdgn (Standard Plan TE-50 r03/06/87)



- ## GENERAL NOTES

1. Breakaway steel posts are required with the FLEAT Terminal.
2. All bolts, nuts, cable assemblies, cable anchors and bearing plates shall be galvanized.
3. The soil tubes shall not protrude more than 4" above ground (measured along a 5' cord). Site grading may be necessary to meet this requirement.
4. The soil tubes may be driven with an approved driving head. Soil tubes shall not be driven with the post in the tube. If the tubes are placed in drilled holes, the backfill material must be satisfactorily compacted to prevent settlement.
5. When rock is encountered during excavation, a 12" Dia. post hole, 20" deep may be used if approved by the engineer. Granular material will be placed in the bottom of the hole approx. 2 1/2" deep to provide drainage. The soil tubes will be field cut to length, placed in the hole and backfilled with adequately compacted material excavated from the hole.
6. The breakaway cable assembly must be taut. A locking device, (vice grips or channel lock pliers) should be used to prevent the cable from twisting when tightening nuts.
7. (R) or (L) indicates right or left Impact Head Reflector Marker (IHRM). Providing and installing of IHRM shall be considered incidental to end treatment.
8. The stripes for IHRM shall slope downward at an angle of 45° towards the side of the end treatment that traffic is to pass.

FED. ROAD DIST. NO.	STATE	FED. AID PROJ. NO.	FISCAL YEAR	SHEET NO.	TOTAL SHEETS
HAWAII	HAW.	NH-030-1(053)	2015	10	28

ITEM NO.	QTY.	BILL OF MATERIALS
F3000	1	IMPACT HEAD
F1303	1	W-BEAM GUARDRAIL END SECTION, 12 GA.
G1203	2	W-BEAM GUARDRAIL, 12 GA.
S730	2	*FOUNDATION SOIL TUBE, 6" x 8" x 72"
E750	1	BEARING PLATE
S760	1	CABLE ANCHOR BOX
E770	1	BCT CABLE ANCHOR ASSEMBLY
E780	1	GROUND STRUT
PB620	2	STEEL BREAKAWAY END POST
PB621	5	STEEL BREAKAWAY LINE POST
	5	RECYCLED PLASTIC BLOCKOUT OR OFFSET BLOCK
	1	IMPACT HEAD REFLECTOR MARKER - IHRM(R) OR (L)
		HARDWARE
B580122	25	5/8" Dia. x 1 1/4" SPLICE BOLT, POST #2
B580754	2	5/8" Dia. x 7 1/2" HEX BOLT
B341004	2	3/4" Dia. x 10" HEX BOLT
B581002	5	5/8" Dia. x 10" H.G.R. BOLT (POST 3 THRU 7)
N050	32	3/8" Dia. H.G.R. NUT (SPICE 24, SOIL TUBES 2, POST 2 THRU 7, 6)
N030	2	3/4" Dia. HEX NUT
W050	6	H.G.R. WASHER
W030	4	3/4" ID WASHER
N100	2	1" ANCHOR CABLE HEX NUT
W100	2	1" ANCHOR CABLE WASHER
B140404	2	1/4" x 4" HEX BOLT
N014	2	1/4" HEX NUT
W014	4	1/4" WASHER
SB58A	8	CABLE ANCHOR BOX SHOULDER BOLT
N055A	8	1/2" A325 STRUCTURAL NUT
W050A	16	1 1/2" OD x 3/8" ID A325 STR. WASHER

Foundation Tube Options For Posts 1 & 2

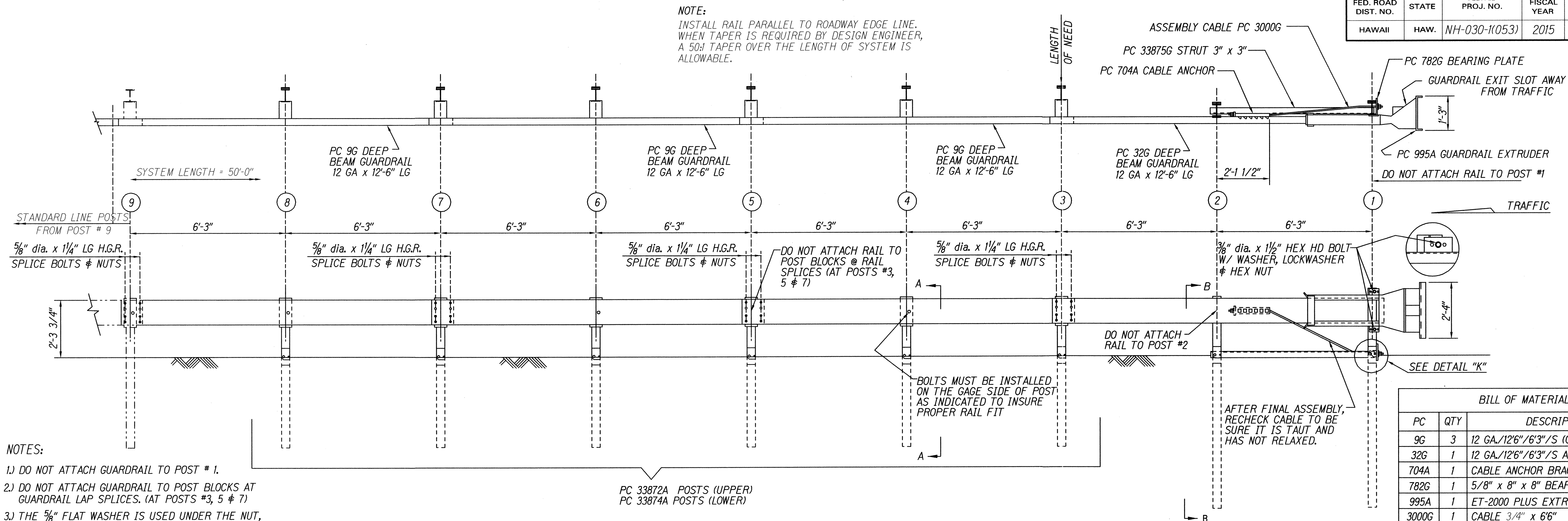
- *6'-0" Split Foundation Tubes S730*
- *6'-0" Solid Foundation Tubes E731*
- *5'-0" Foundation Tubes S735 W/Soil Plates SP600*
- *4'-6" Foundation Tubes E735 W/Soil Plates SP600*

ORIGINAL PLAN	SURVEY PLOTTED BY _____ DATE _____
NOTE BOOK	DRAWN BY <u>χ</u> _____ DATE <u>χ</u> _____
	TRACED BY _____
	DESIGNED BY <u>χ</u> _____
	QUANTITIES BY _____
	CHECKED BY _____
S _n _____	

8/12/02	ttd1.ruby/guardrail/fleaf350.dgn	(standard plan TE-61 r11/03/89 & TE-62 r09/01/87)
---------	----------------------------------	---

STATE OF HAWAII
DEPARTMENT OF TRANSPORTATION
HIGHWAYS DIVISION
FL EAT-350
FLARED ENERGY ABSORBING TERMINAL
HONOAPIILANI HIGHWAY GUARDRAIL
& SHOULDER IMPROVEMENTS
Vicinity of Ukumehame M.P. 13.2 to M.P. 13.3
Federal-Aid Project No. NH-030-1(053)
Not to Scale Date: August, 2014

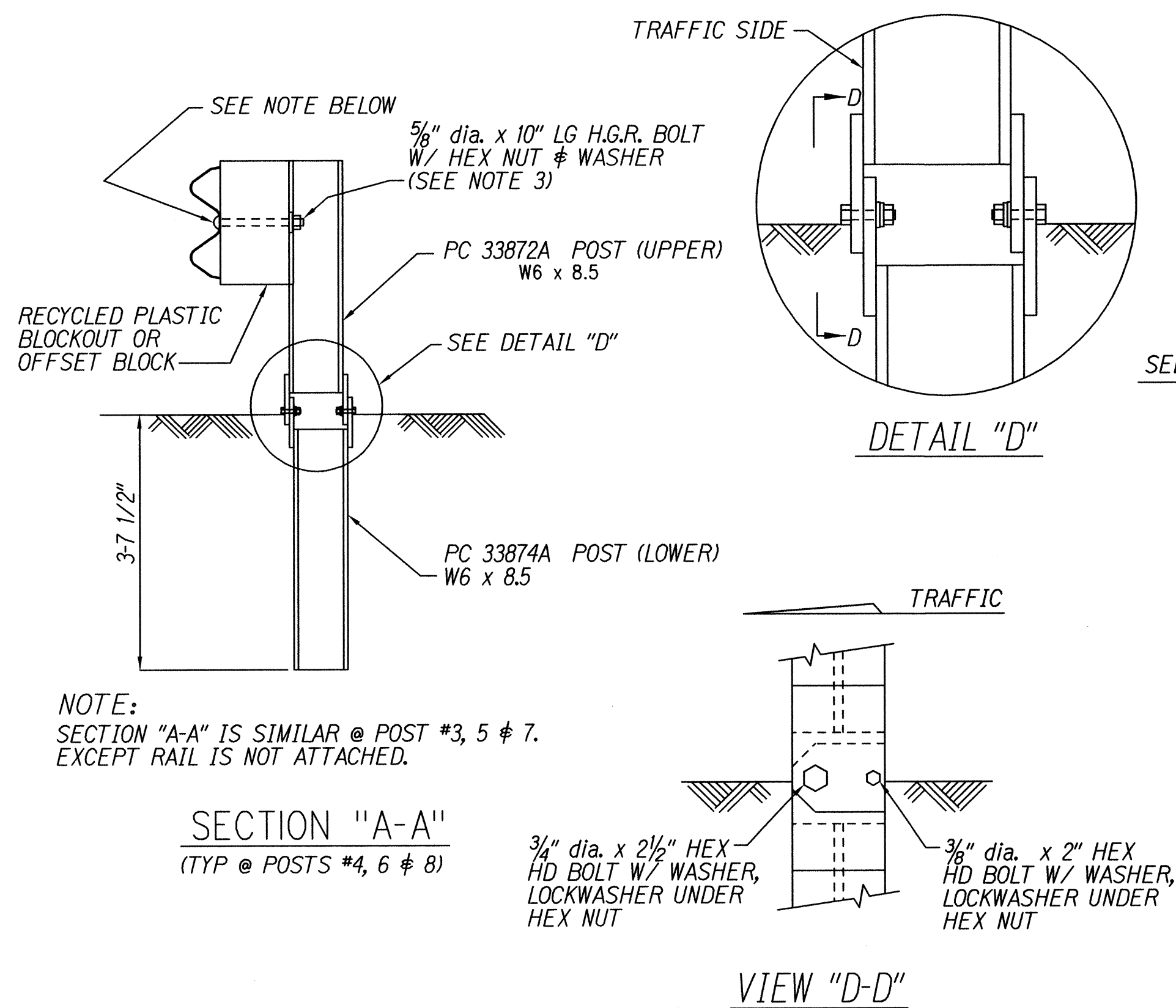
FED. ROAD DIST. NO.	STATE	FED. AID PROJ. NO.	FISCAL YEAR	SHEET NO.	TOTAL SHEETS
HAWAII	HAW.	NH-030-1(053)	2015	11	28



NOTES:

- DO NOT ATTACH GUARDRAIL TO POST # 1.
- DO NOT ATTACH GUARDRAIL TO POST BLOCKS AT GUARDRAIL LAP SPLICES. (AT POSTS #3, 5 & 7)
- THE 5/8" FLAT WASHER IS USED UNDER THE NUT, BEHIND THE POST ONLY. NO WASHER IS USED AT THE RAIL.
- MANUFACTURER SUGGESTS CUSTOMER TO PROVIDE REFLECTORIZATION OF TERMINAL.

BILL OF MATERIAL		
PC	QTY	DESCRIPTION
9G	3	12 GA./12'6"/6'3"/S (GUARDRAIL)
32G	1	12 GA./12'6"/6'3"/S ANC (GUARDRAIL)
704A	1	CABLE ANCHOR BRACKET
782G	1	5/8" x 8" x 8" BEARING PLATE
995A	1	ET-2000 PLUS EXTRUDER
3000G	1	CABLE 3/4" x 6'6"
3300G	6	5/8" WASHER
3340G	38	5/8" HEX NUT
3360G	32	5/8" dia. x 1 1/4" SPLICE BOLT
3500G	6	5/8" dia. x 10" POST BOLT
3701G	19	3/4" WASHER
3704G	16	3/4" HEX NUT
3717G	15	3/4" dia. x 2 1/2" HEX HD BOLT
3718G	1	3/4" dia. x 3" HEX HD BOLT
3900G	2	1" WASHER
3910G	2	1" HEX NUT
5326B	6	RECYCLED PLASTIC BLOCKOUT OR OFFSET BLOCK
4254G	18	3/8" WASHER
4255G	2	3/8" FENDER WASHERS
4258G	16	3/8" LOCKWASHER
4261G	2	3/8" dia. x 1 1/2" HEX HD BOLT
4699G	16	3/4" LOCKWASHER
6321G	16	3/8" dia. x 2" HEX HD BOLT
6405G	18	3/8" HEX NUT
33871A	1	ET2000 HBA POST #1 TOP
33872A	7	ET2000 HBA POST #2-#8 TOP
33873A	2	ET2000 HBA POST #1-#2 BOTTOM
33874A	6	ET2000 HBA POST #3-#8 BOTTOM
33875G	1	6'-6" ANGLE STRUT ET HBA

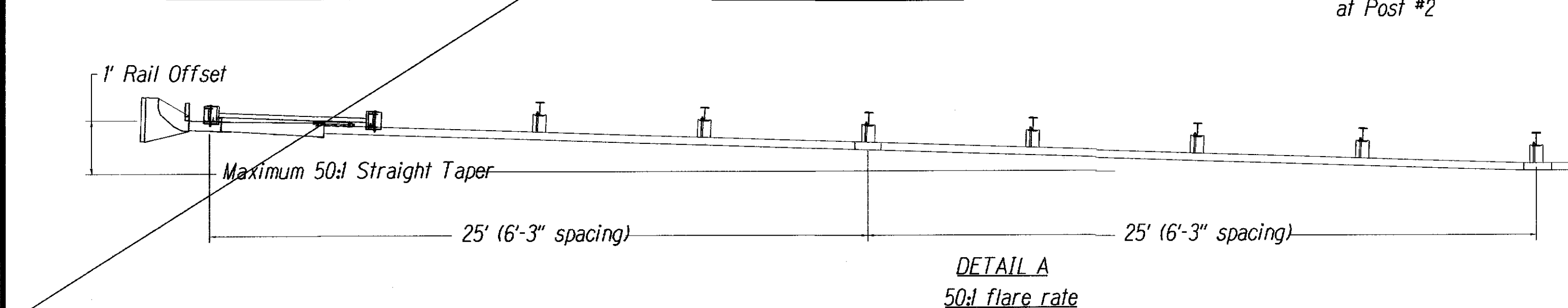
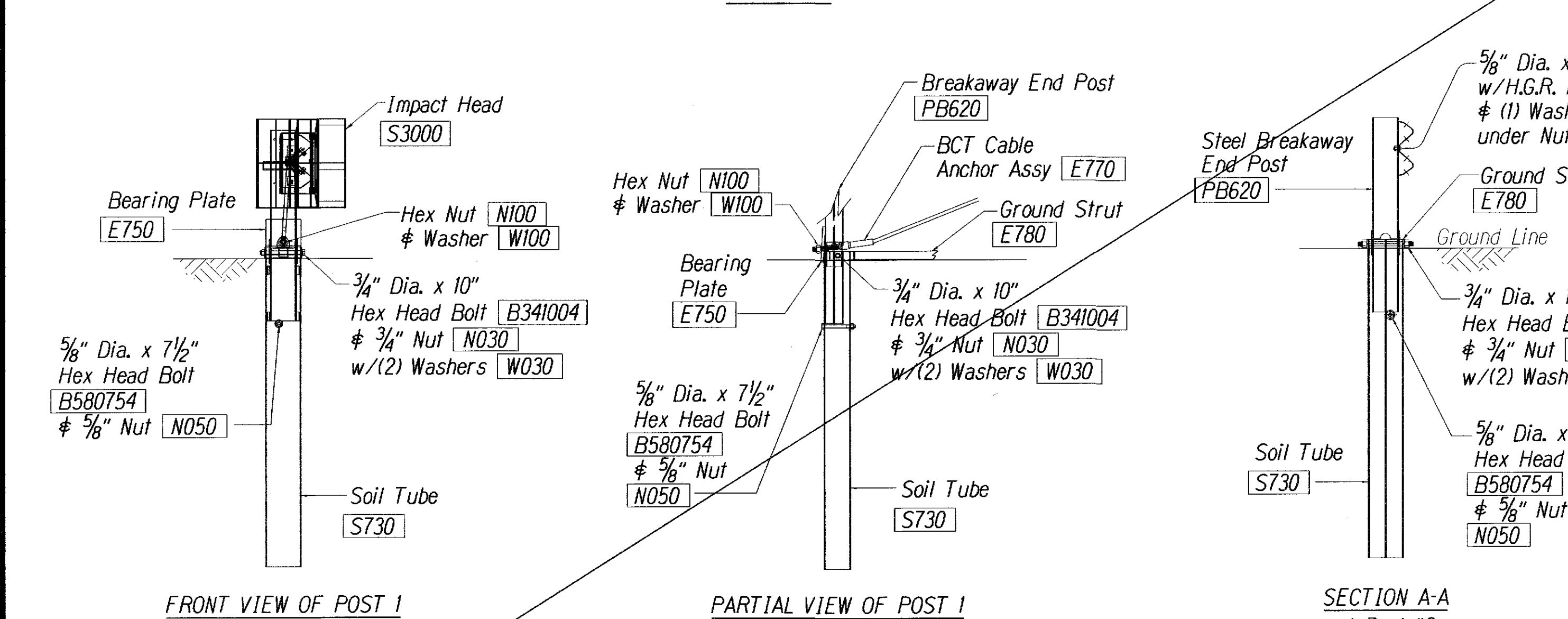
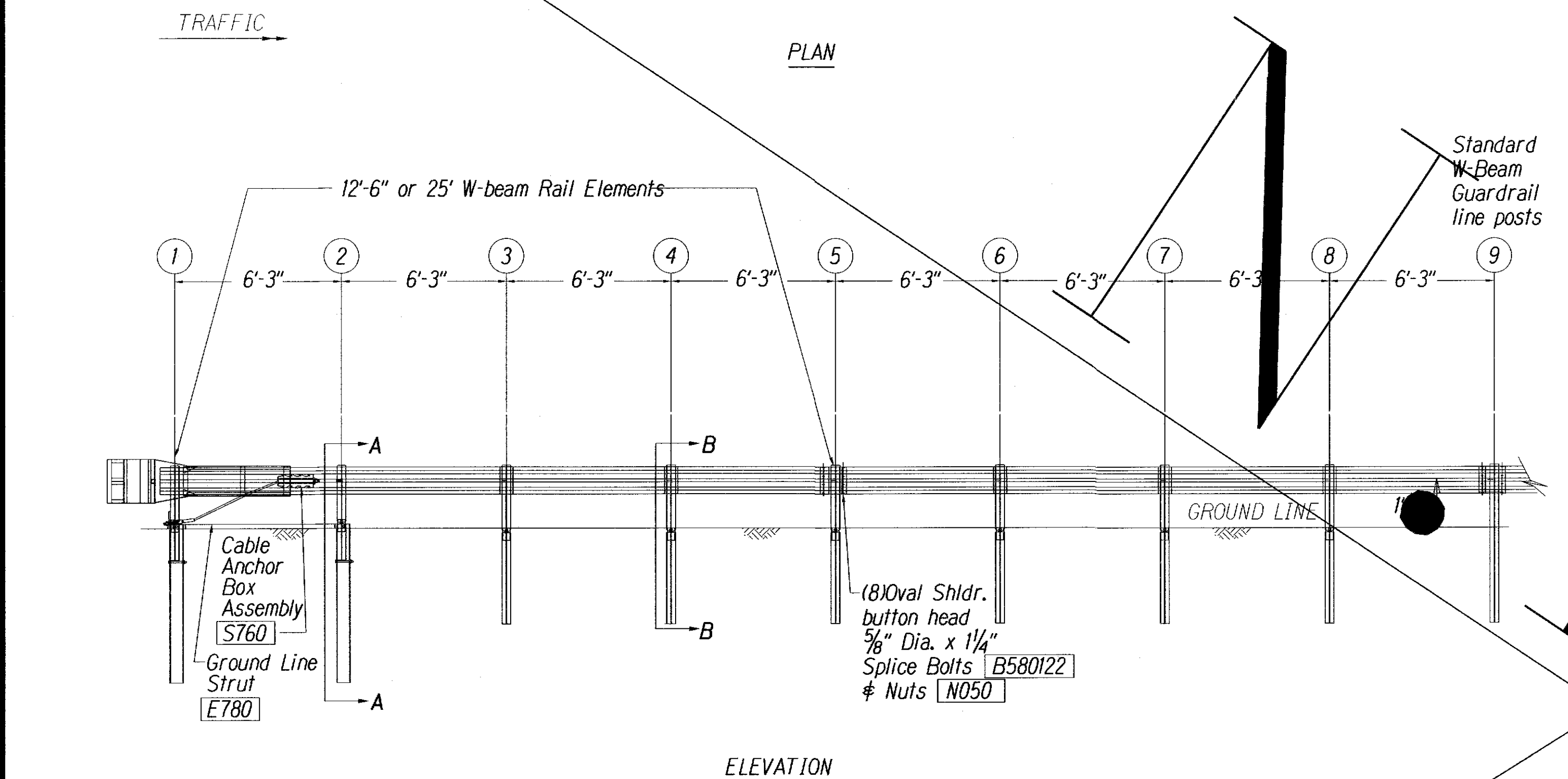
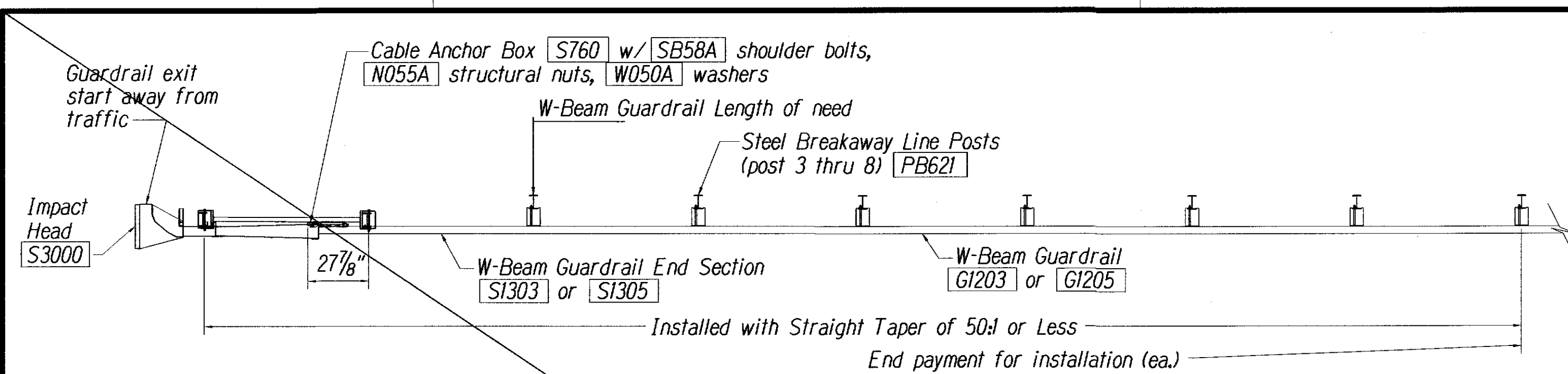


STATE OF HAWAII
DEPARTMENT OF TRANSPORTATION
HIGHWAYS DIVISION

ET-2000 PLUS
HONOAPIILANI HIGHWAY GUARDRAIL
& SHOULDER IMPROVEMENTS
Vicinity of Ukumehame M.P. 13.2 to M.P. 13.3
Federal-Aid Project No. NH-030-1(053)

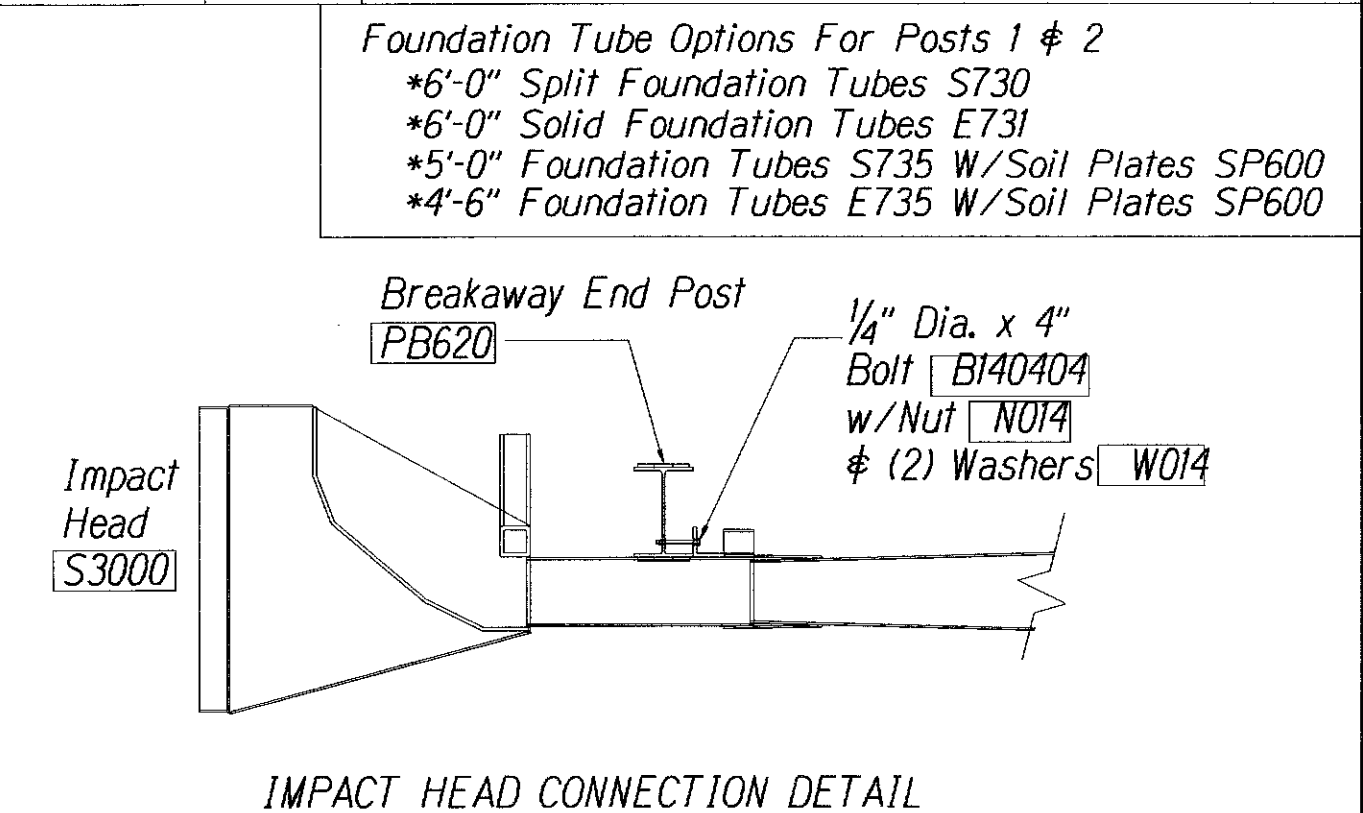
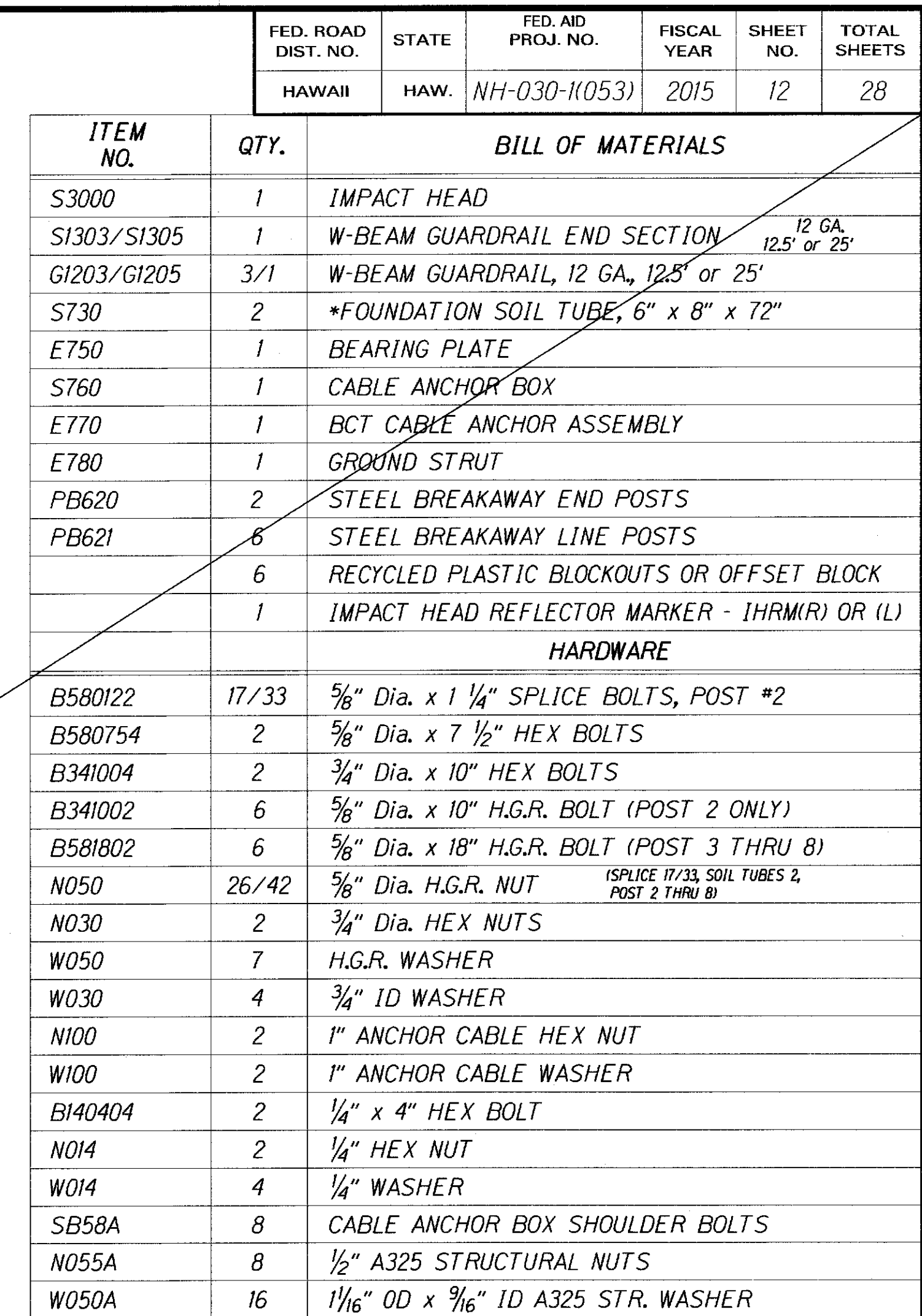
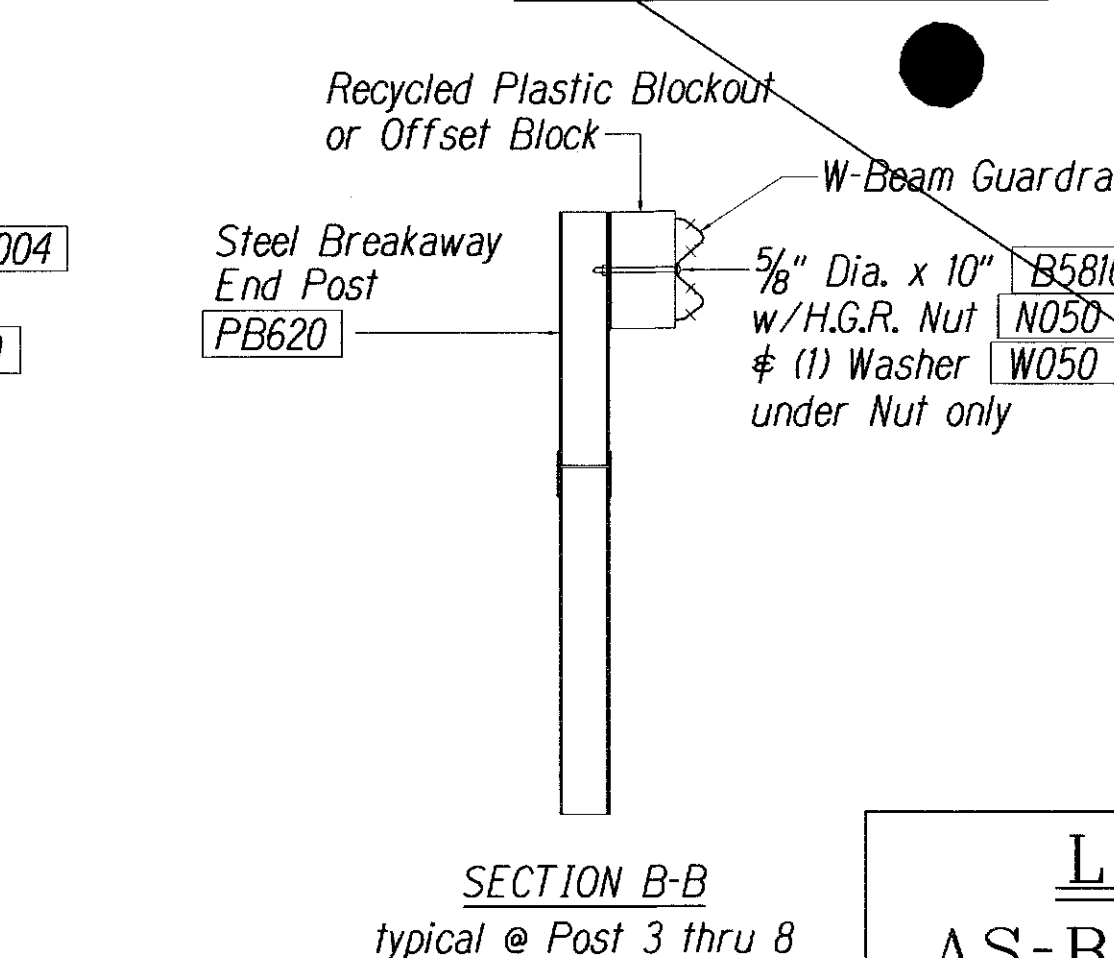
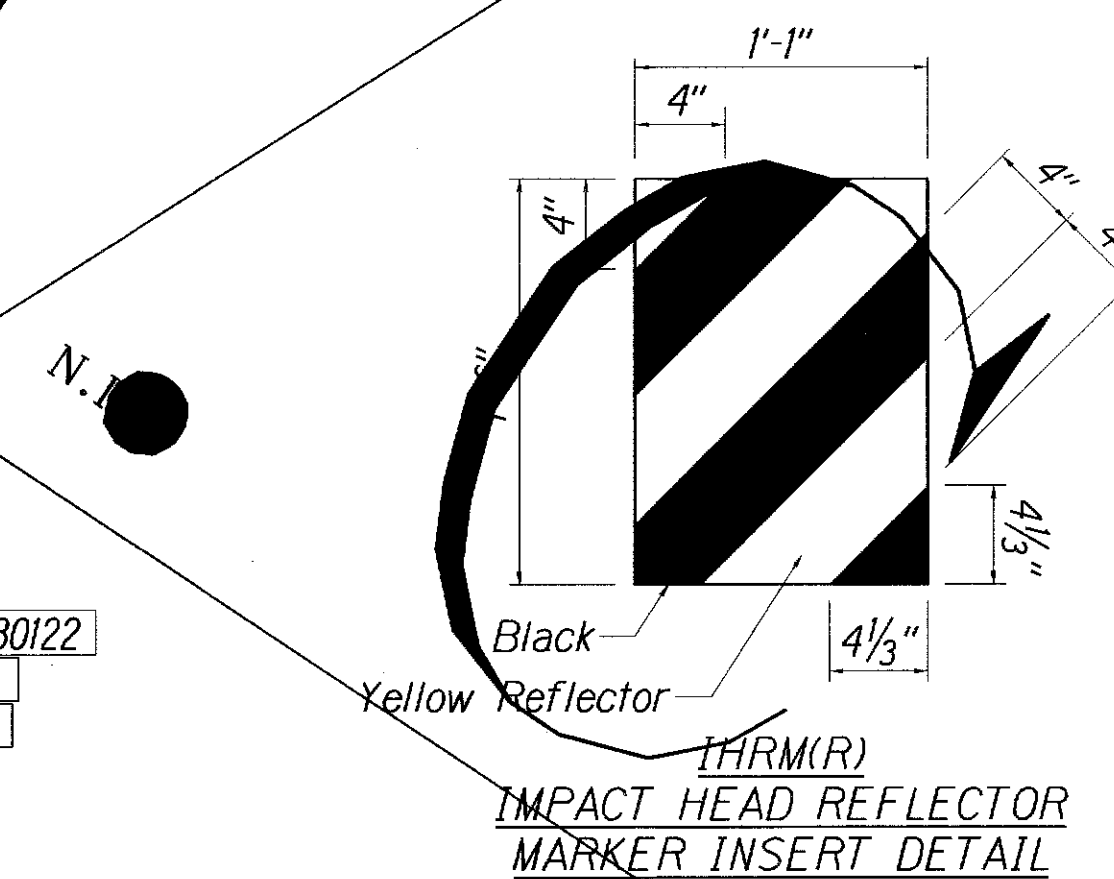
Scale: NTS Date: September, 2014



SHEET No. 4 OF 5 SHEETS



GENERAL NOTES:

1. Breakaway steel posts are required with the Sequential Kinking Terminal.
2. All bolts, nuts, cable assemblies, cable anchors and bearing plates shall be galvanized.
3. When the Sequential Kinking Terminal is selected as the end treatment for W-Beam Guardrail installation, the W-Beam Guardrail will be flared at a rate of 50:1 to prevent the impact head from encroaching on the shoulder. The flare is not required and may be decreased or eliminated for specific installations.
4. The soil tube shall not protrude more than 4" above ground (measured) along a 5' cord). Site grading may be necessary to meet this requirement.
5. The soil tubes may be driven with an approved driving head. They shall not be driven with the post in the tube. If the soil tubes are placed in drilled holes, the backfill material must be satisfactorily compacted to prevent settlement.
6. When rock is encountered during excavation, a 12" dia. post hole, 20" deep may be used if approved by the Engineer. Granular material will be placed in the bottom of the hole approx. 2 1/2" deep to provide drainage. The soil tubes will be field cut to length, placed in the hole and backfilled with adequately compacted material excavated from the hole.
7. The breakaway cable assembly must be taut. A locking device, (vice grips or channel lock pliers) should be used to prevent the cable from twisting when tightening nuts.
8. A special site evaluation should be considered prior to using the Sequential Kinking Terminal where there is less than 25' between the outlet side of the Sequential Kinking Terminal and any adjacent driving line.
9. (R) or (L) indicates right or left Impact Head Reflector Marker (IHRM). Providing and installing of IHRM shall be considered incidental to end treatment.
10. The stripes for IHRM shall slope downward at an angle of 45° towards the side of the end treatment that traffic is to pass.



LEGEND FOR AS-BUILT POSTINGS	
	Squiggly line for as-built deletion
	Double line for as-built deletion
Roadway	Text for as-built posting

STATE OF HAWAII
DEPARTMENT OF TRANSPORTATION
HIGHWAYS DIVISION
SKT-350
SEQUENTIAL KINKING TERMINAL
HONOAPIILANI HIGHWAY GUARDRAIL
& SHOULDER IMPROVEMENTS
Vicinity of Ukumehame M.P. 13.2 to M.P. 13.3
Federal-Aid Project No. NH-030-K0531
Not to Scale Date: September, 1974