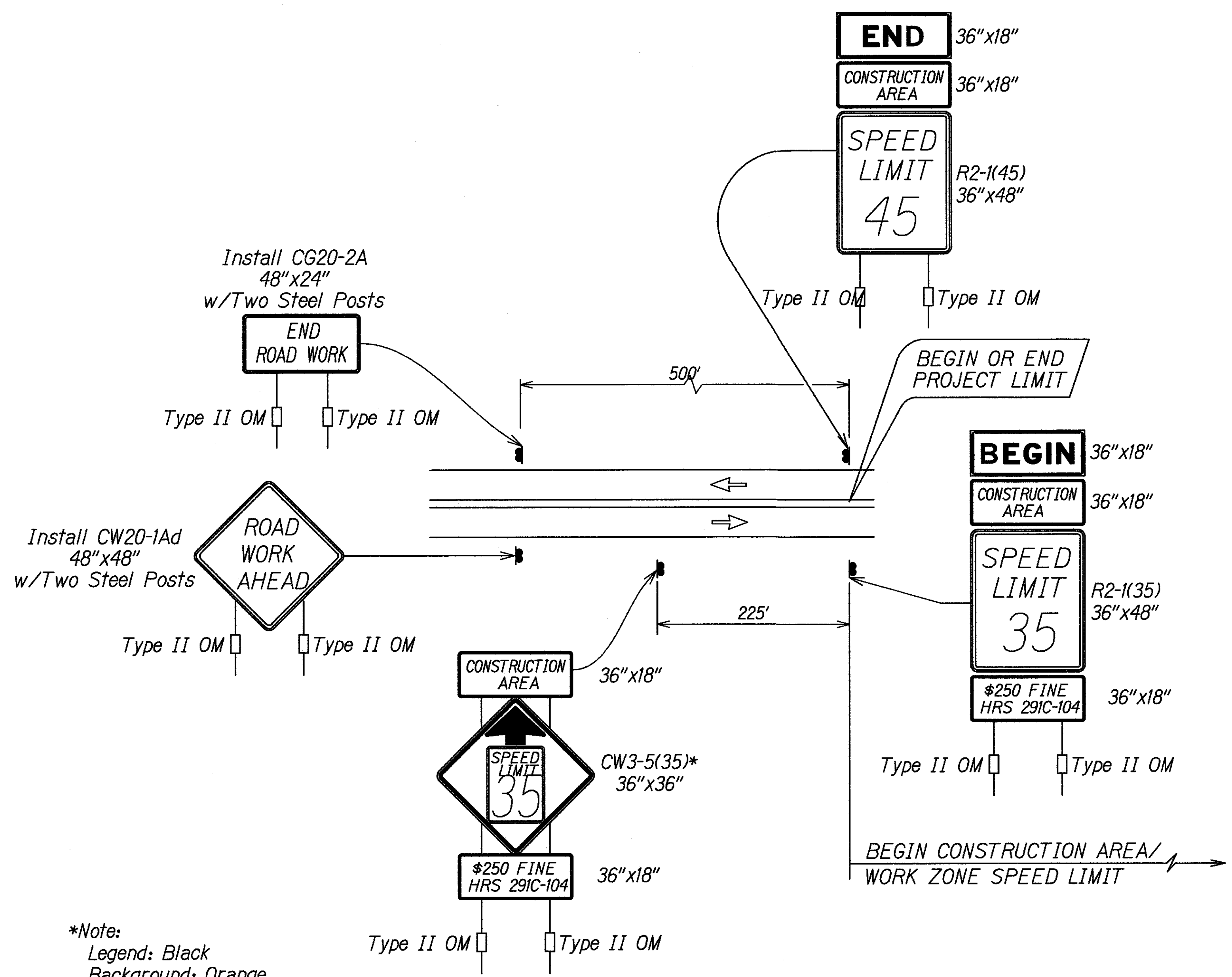


FED. ROAD DIST. NO.	STATE	FED. AID PROJ. NO.	FISCAL YEAR	SHEET NO.	TOTAL SHEETS
HAWAII	HAW.	HSIP-030-1(055)	2018	24	25

FILE: G:\DOT\1501 HONOAPILANI HIGHWAY SAFETY IMPROVEMENTS\300 DSG\310 PLANS\STANDARD TRAFFIC CONTROL NOTES.DWG
 Last Save by: JSK
 Last Saved: 2/7/2019
 Plotted on: 2/7/2019



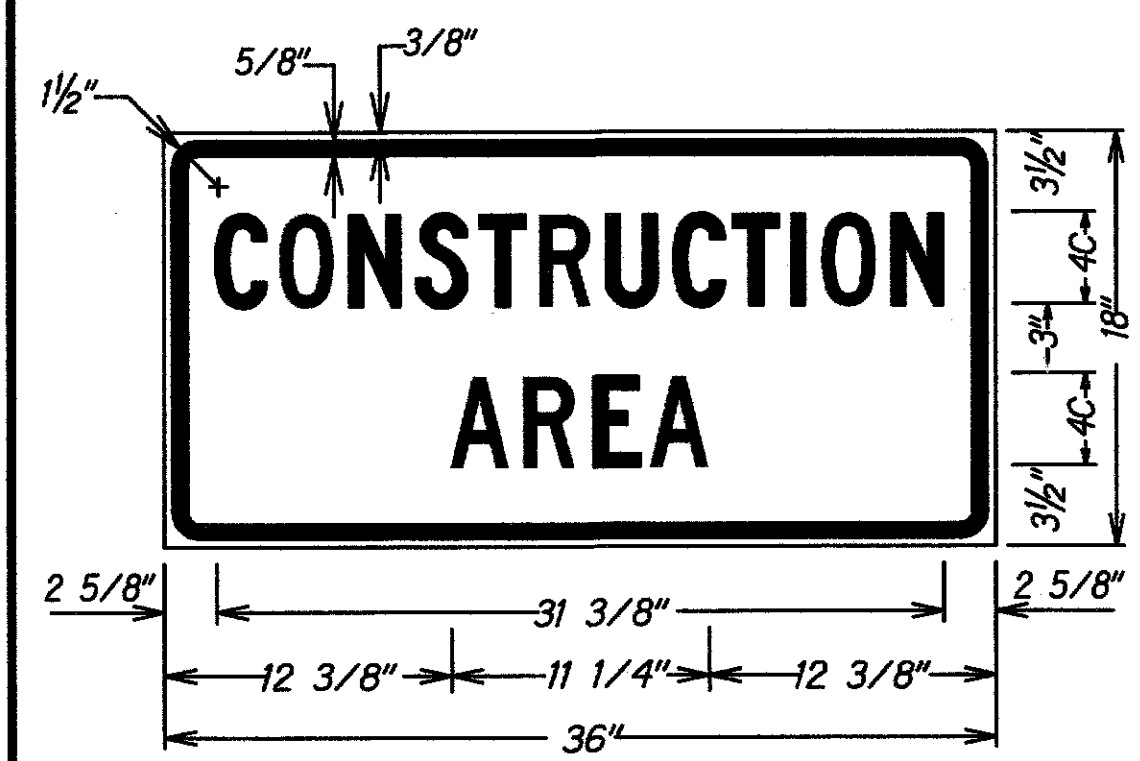
*Note:
 Legend: Black
 Background: Orange
 Speed Limit: Black on White

TYPICAL DETAIL FOR CONSTRUCTION SIGNS
 ON TWO LANE OR MULTILANE UNDIVIDED HIGH SPEED HIGHWAY

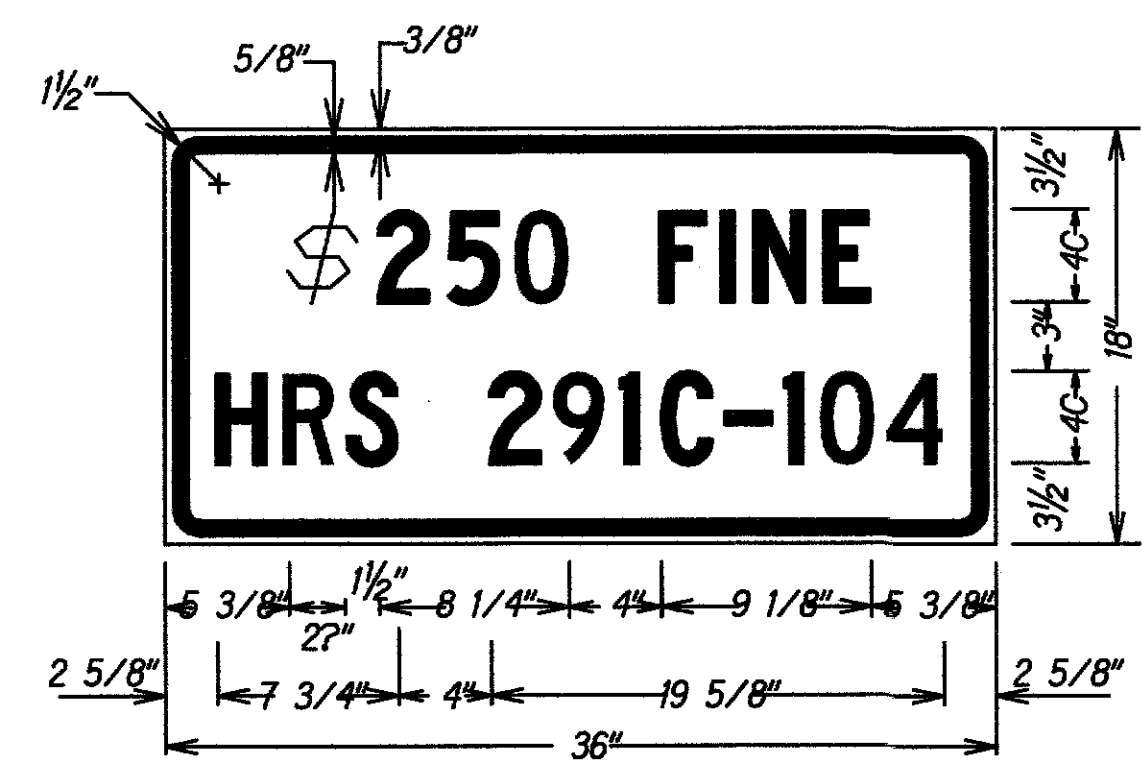
Work Zone Notes:

1. This Work Zone Sign Plan is intended for use on long-term stationary work zones/construction phases (3 days or more). All work zones or construction phases less than 3 days duration will use Traffic Control Plans shown in Section 645 of the Special Provisions.
2. All existing regulatory speed limit signs with posts within the work zone/project limits shall be removed and replaced with work zone speed limit sign assemblies (R2-1(35) and CW3-5(35) with "CONSTRUCTION AREA" and "\$250 FINE HRS 291C-104" Supplemental Signs).
3. Construction sign assemblies shall be installed on both the approaching and trailing ends of each work zone as shown on this plan.
4. Each construction warning sign and work zone speed limit assembly shall have a minimum of two (2) Type II OM. Installation of each Type II OM shall be considered incidental to Item No. 621.7100, Construction Sign with Posts.
5. Upon the completion of all physical work or as directed by the Engineer, all construction signs and work zone speed limit assemblies shall be removed. All speed limit signs and posts that were existing at the start of the project within the work zone/project limits shall be restored back to their original locations and configurations.
6. Placement of construction signs shall not obstruct the path of pedestrians and bicyclists.
7. The removal and restoration of existing regulatory speed limit signs with new posts along with the installation, maintenance and removal of work zone speed limit sign assemblies shall be considered incidental to Item No. 621.7100, Construction Sign with Posts.

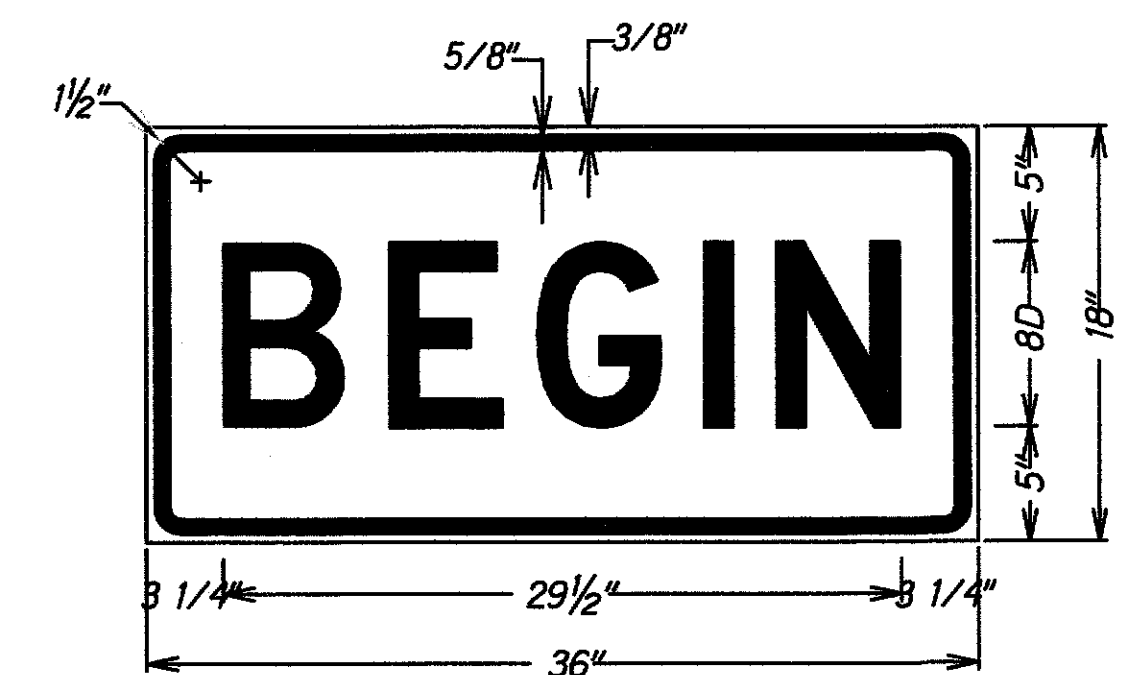
DESIGNED BY	DATE
DRAWN BY	
CHECKED BY	
IN CHARGE BY	
NO.	



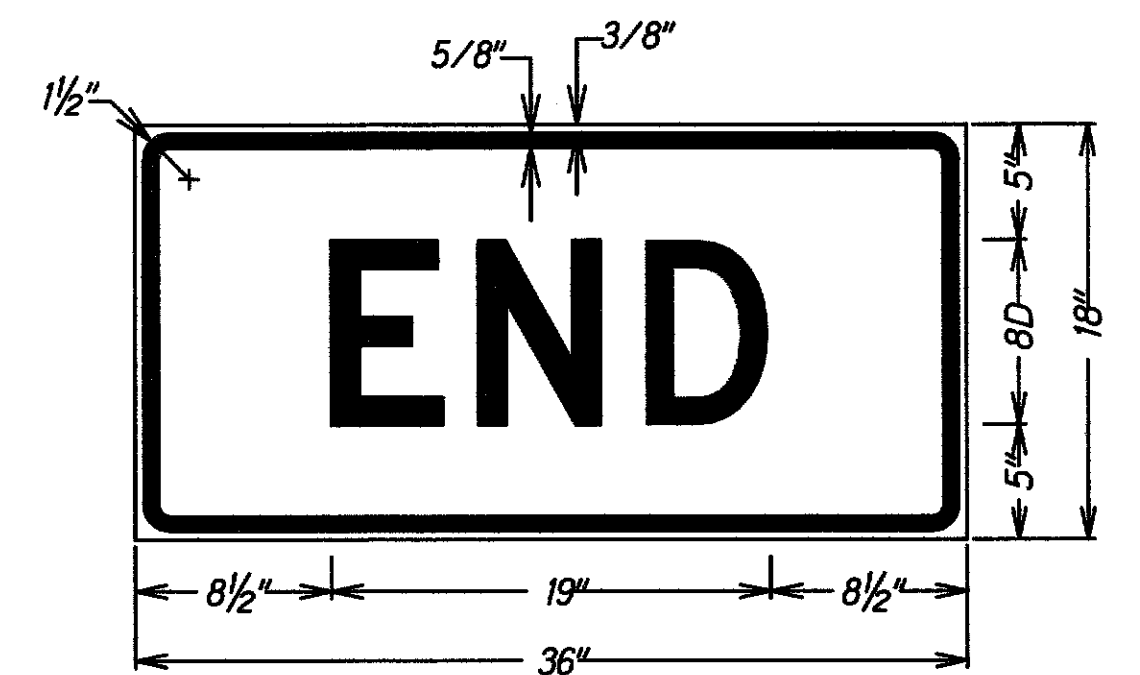
LEGEND: BLACK
 BACKGROUND: ORANGE



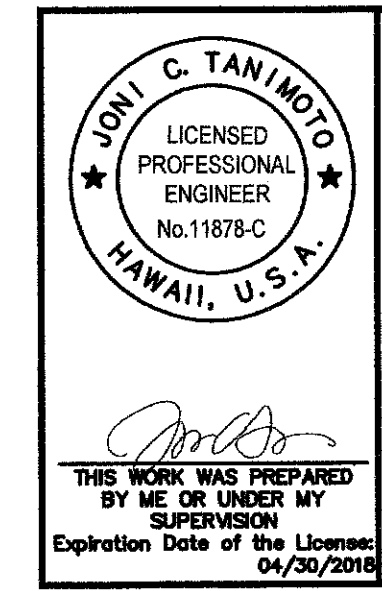
LEGEND: BLACK
 BACKGROUND: WHITE



LEGEND: BLACK
 BACKGROUND: ORANGE



LEGEND: BLACK
 BACKGROUND: ORANGE



STATE OF HAWAII
 DEPARTMENT OF TRANSPORTATION
 HIGHWAYS DIVISION
HIGH SPEED UNDIVIDED HIGHWAY
WORK ZONE SIGNING PLAN, NOTES&DETAILS
HONOAPILANI HIGHWAY
SAFETY IMPROVEMENTS
 Vicinity of Ukumehame to Olowalu
 Federal Aid Project No. HSIP-030-1(055)
 Scale: As Shown Date: September 2017