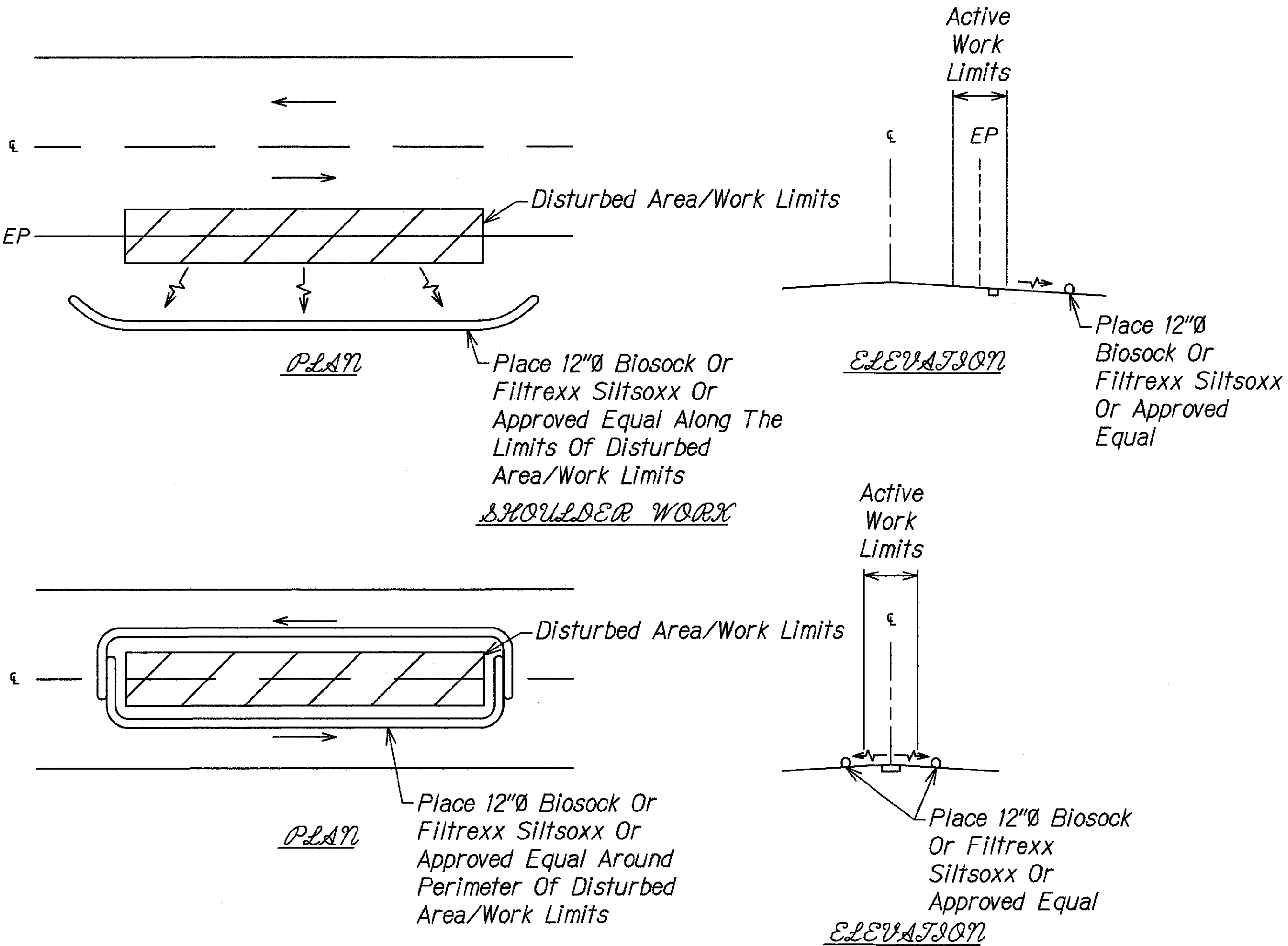


FILE: G:\DOT\1501 HONOAPIILANI HIGHWAY SAFETY IMPROVEMENTS\300 DSG\310 PLANS\EROSION CONTROL PLAN.DWG
Last Save by: JSK
Last Saved: 2/7/2019
Plotted on: 2/7/2019

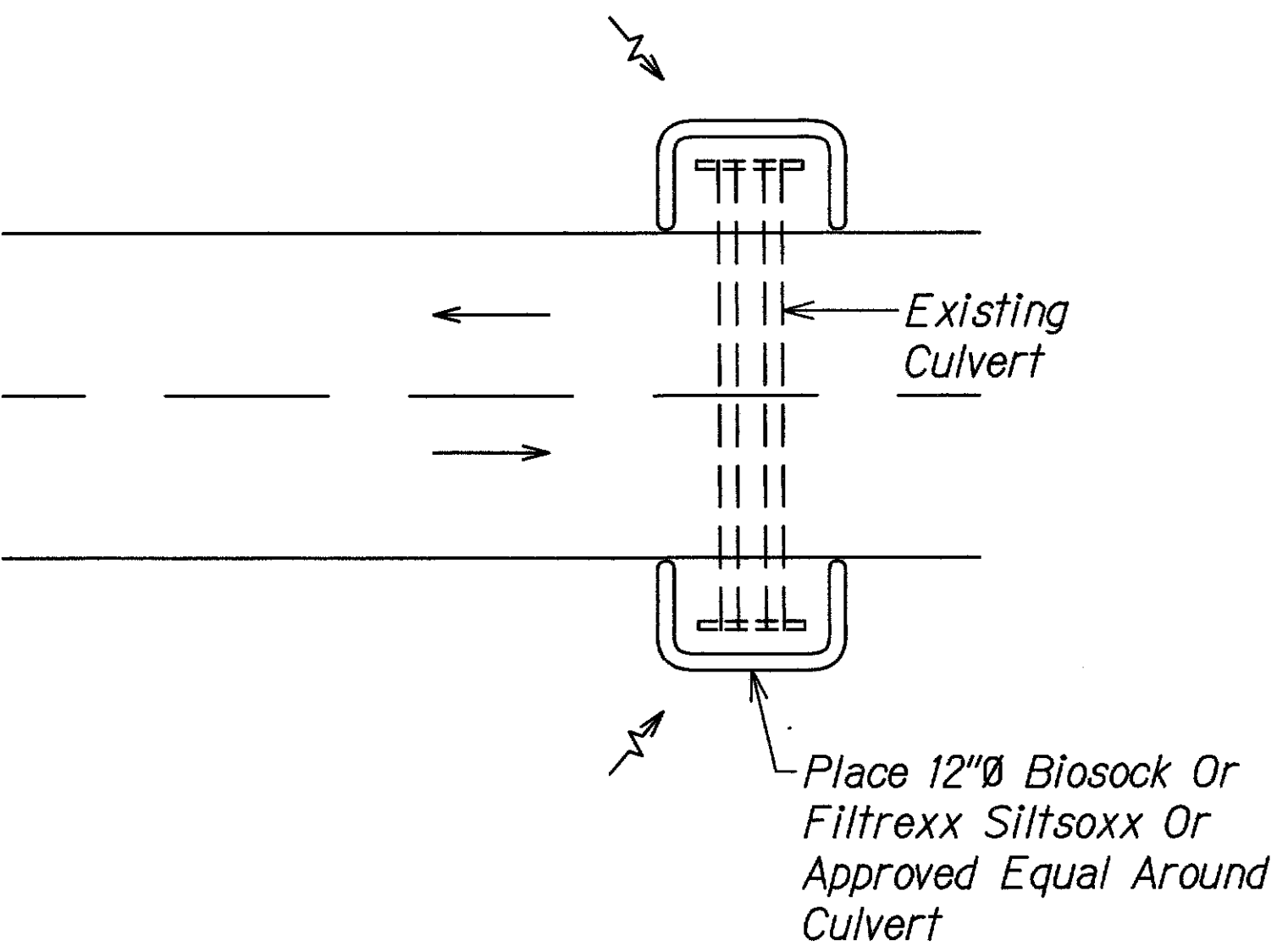
DESIGNED BY	DATE
DRAWN BY	
CHECKED BY	
IN CHARGE	
APPROVED BY	

FED. ROAD DIST. NO.	STATE	FED. AID PROJ. NO.	FISCAL YEAR	SHEET NO.	TOTAL SHEETS
HAWAII	HAW.	HSIP-030-1(055)	2018	7	25



- NOTES:**
- Contractor Shall Maintain Filter Socks And BMPs For Culvert Protection Within 100 Feet Of Active Work Area.
 - Compost For Filter Sock Shall Not Contain Biosolids, And Shall Be Consistent With EPA Guidelines.
 - Install Biosock Or Filtrexx Siltsoxx Or Approved Equal Per Manufacturer's Recommendations.

1 **FILTER SOCK DETAIL**
Not to Scale



Note: Contractor Shall Maintain BMPs For Culverts Within 100 Feet Of The Work Area.

2 **CULVERT PROTECTION DETAIL**
Not to Scale

STATE OF HAWAII
DEPARTMENT OF TRANSPORTATION
HIGHWAYS DIVISION

EROSION CONTROL DETAILS

**HONOAPIILANI HIGHWAY
SAFETY IMPROVEMENTS**

Vicinity of Ukumehame to Olowalu
Federal Aid Project No. HSIP-030-1(055)

Scale: As Shown Date: September 2017

JOHN C. TANIMOTO
LICENSED PROFESSIONAL ENGINEER
No. 11878-C
HAWAII, U.S.A.

THIS WORK WAS PREPARED
BY ME OR UNDER MY
SUPERVISION
Expiration Date of the License: 04/30/2019