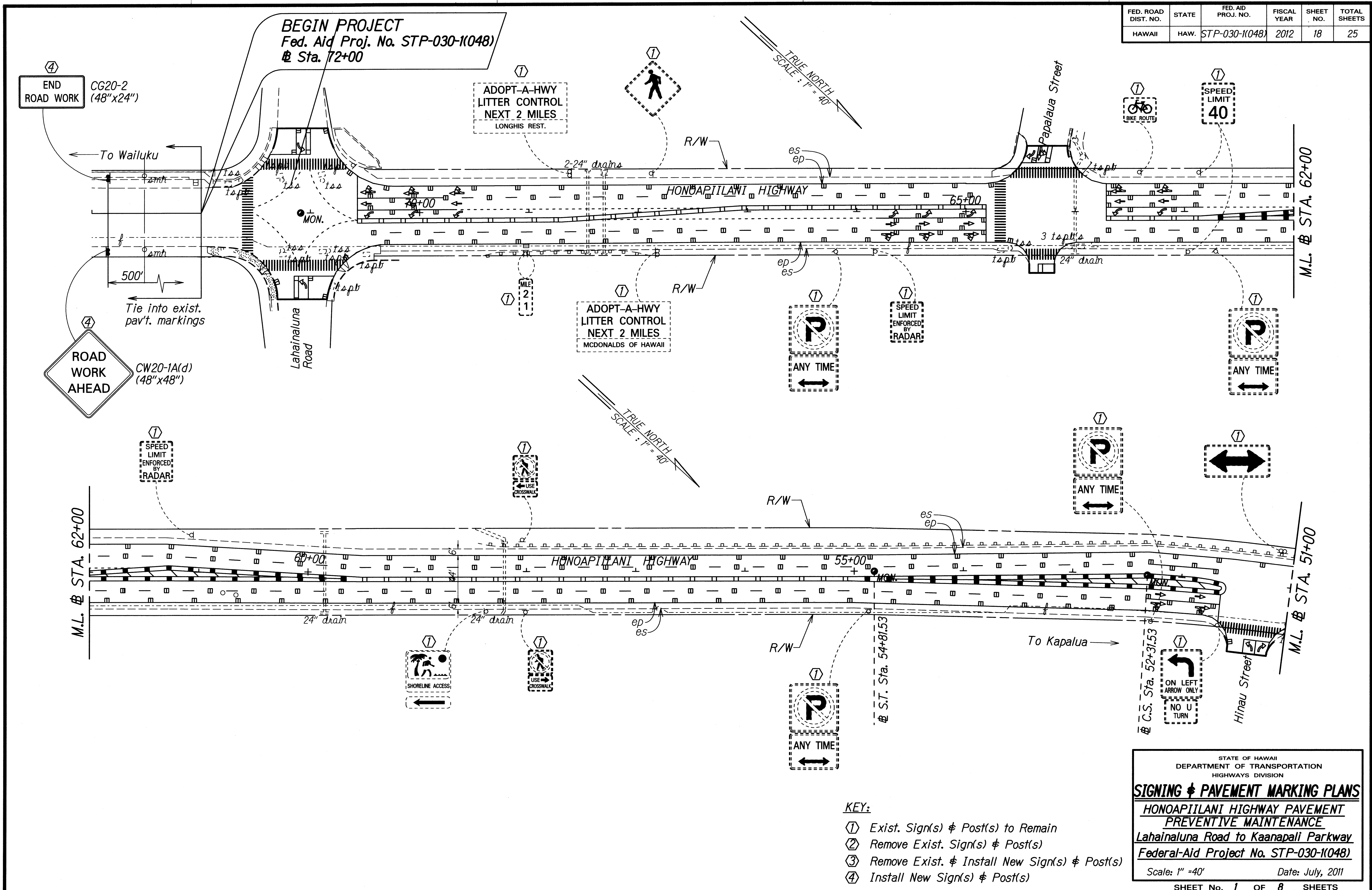


| FED. ROAD DIST. NO. | STATE | FED. AID PROJ. NO. | FISCAL YEAR | SHEET NO. | TOTAL SHEETS |
|---------------------|-------|--------------------|-------------|-----------|--------------|
| HAWAII | HAW. | STP-030-1(048) | 2012 | 18 | 25 |



| | |
|-------------------|------|
| SURVEY PLOTTED BY | DATE |
| DRAWN BY | |
| NOTED BY | |
| CHECKED BY | |
| ORIGINAL PLAN | |
| NOTE BOOK | |
| N. | |

- KEY:**
- ① Exist. Sign(s) & Post(s) to Remain
 - ② Remove Exist. Sign(s) & Post(s)
 - ③ Remove Exist. & Install New Sign(s) & Post(s)
 - ④ Install New Sign(s) & Post(s)

STATE OF HAWAII
DEPARTMENT OF TRANSPORTATION
HIGHWAYS DIVISION

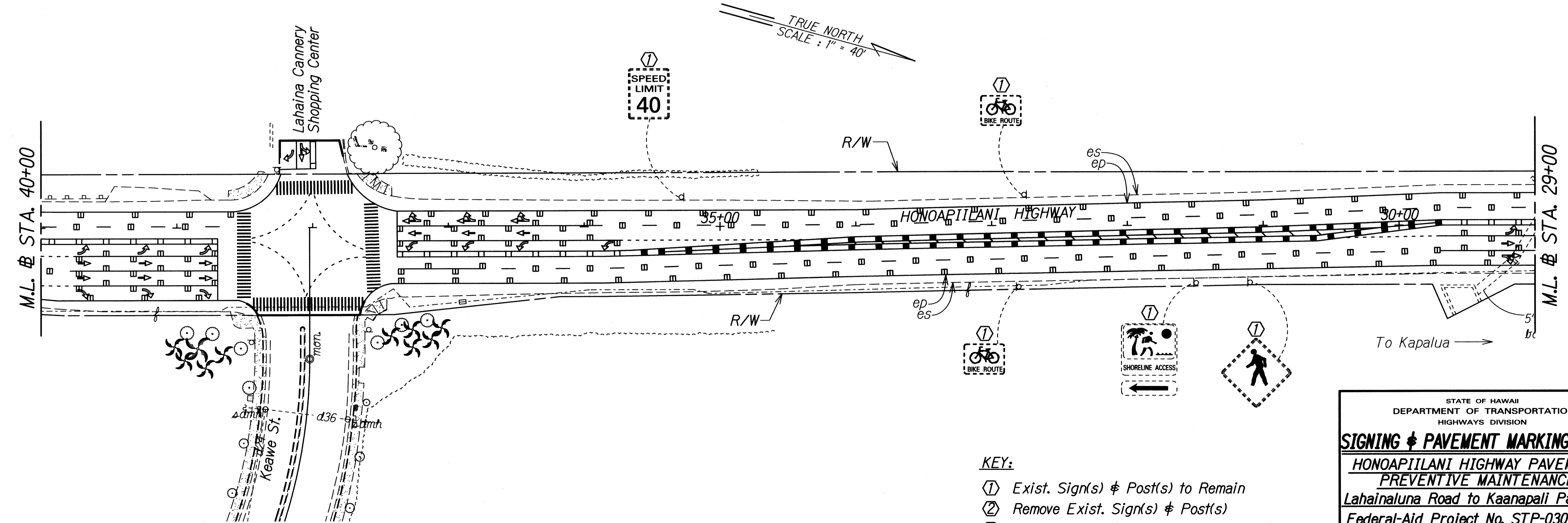
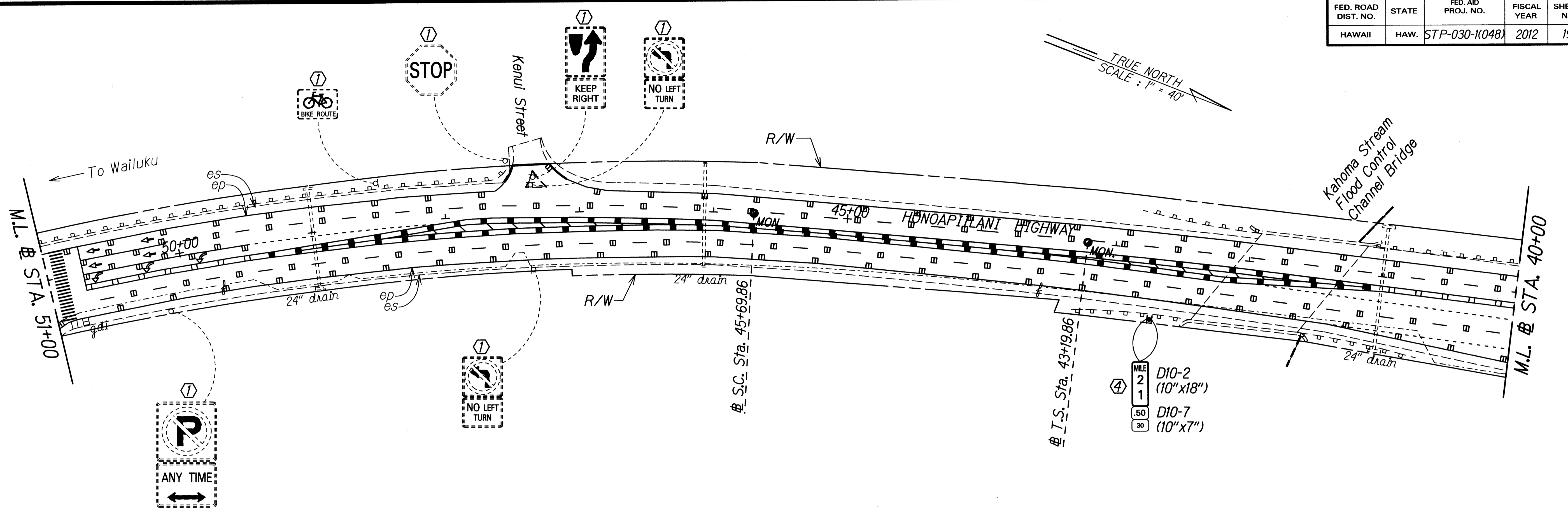
SIGNING & PAVEMENT MARKING PLANS

HONOAPIILANI HIGHWAY PAVEMENT PREVENTIVE MAINTENANCE
Lahainaluna Road to Kaaanapali Parkway
Federal-Aid Project No. STP-030-1(048)

Scale: 1" = 40' Date: July, 2011

SHEET No. 1 OF 8 SHEETS

| | | | | | |
|---------------------|-------|--------------------|-------------|-----------|--------------|
| FED. ROAD DIST. NO. | STATE | FED. AID PROJ. NO. | FISCAL YEAR | SHEET NO. | TOTAL SHEETS |
| HAWAII | HAW. | STP-030-1(048) | 2012 | 19 | 25 |



| | |
|-------------------|------|
| SURVEY PLOTTED BY | DATE |
| DRAWN BY | |
| CHECKED BY | |
| NOTES BOOK | |
| CHECKED BY | |

- KEY:**
- ① Exist. Sign(s) & Post(s) to Remain
 - ② Remove Exist. Sign(s) & Post(s)
 - ③ Remove Exist. & Install New Sign(s) & Post(s)
 - ④ Install New Sign(s) & Post(s)

STATE OF HAWAII
DEPARTMENT OF TRANSPORTATION
HIGHWAYS DIVISION

SIGNING & PAVEMENT MARKING PLANS

HONOAPIILANI HIGHWAY PAVEMENT PREVENTIVE MAINTENANCE

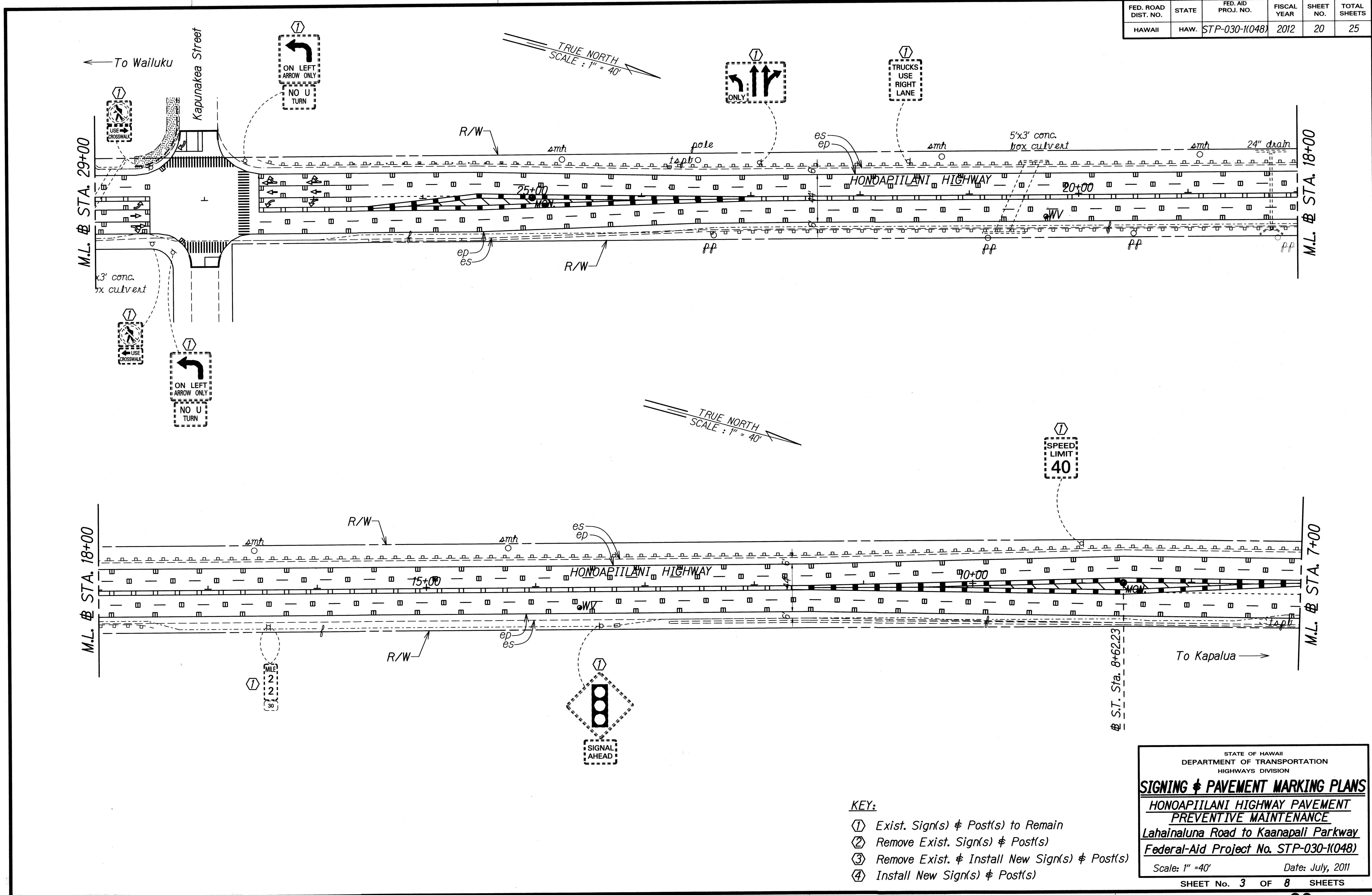
Lahainaluna Road to Kaaanapali Parkway

Federal-Aid Project No. STP-030-1(048)

Scale: 1" = 40' Date: July, 2011

SHEET No. 2 OF 8 SHEETS

| | | | | | |
|---------------------|-------|--------------------|-------------|-----------|--------------|
| FED. ROAD DIST. NO. | STATE | FED. AID PROJ. NO. | FISCAL YEAR | SHEET NO. | TOTAL SHEETS |
| HAWAII | HAW. | STP-030-1(048) | 2012 | 20 | 25 |



| | |
|-------------------|------|
| ORIGINAL PLAN | DATE |
| SURVEY PLOTTED BY | |
| DRAWN BY | |
| DESIGNED BY | |
| QUANTITIES BY | |
| CHECKED BY | |
| NO. | |

- KEY:**
- ① Exist. Sign(s) & Post(s) to Remain
 - ② Remove Exist. Sign(s) & Post(s)
 - ③ Remove Exist. & Install New Sign(s) & Post(s)
 - ④ Install New Sign(s) & Post(s)

STATE OF HAWAII
DEPARTMENT OF TRANSPORTATION
HIGHWAYS DIVISION

SIGNING & PAVEMENT MARKING PLANS

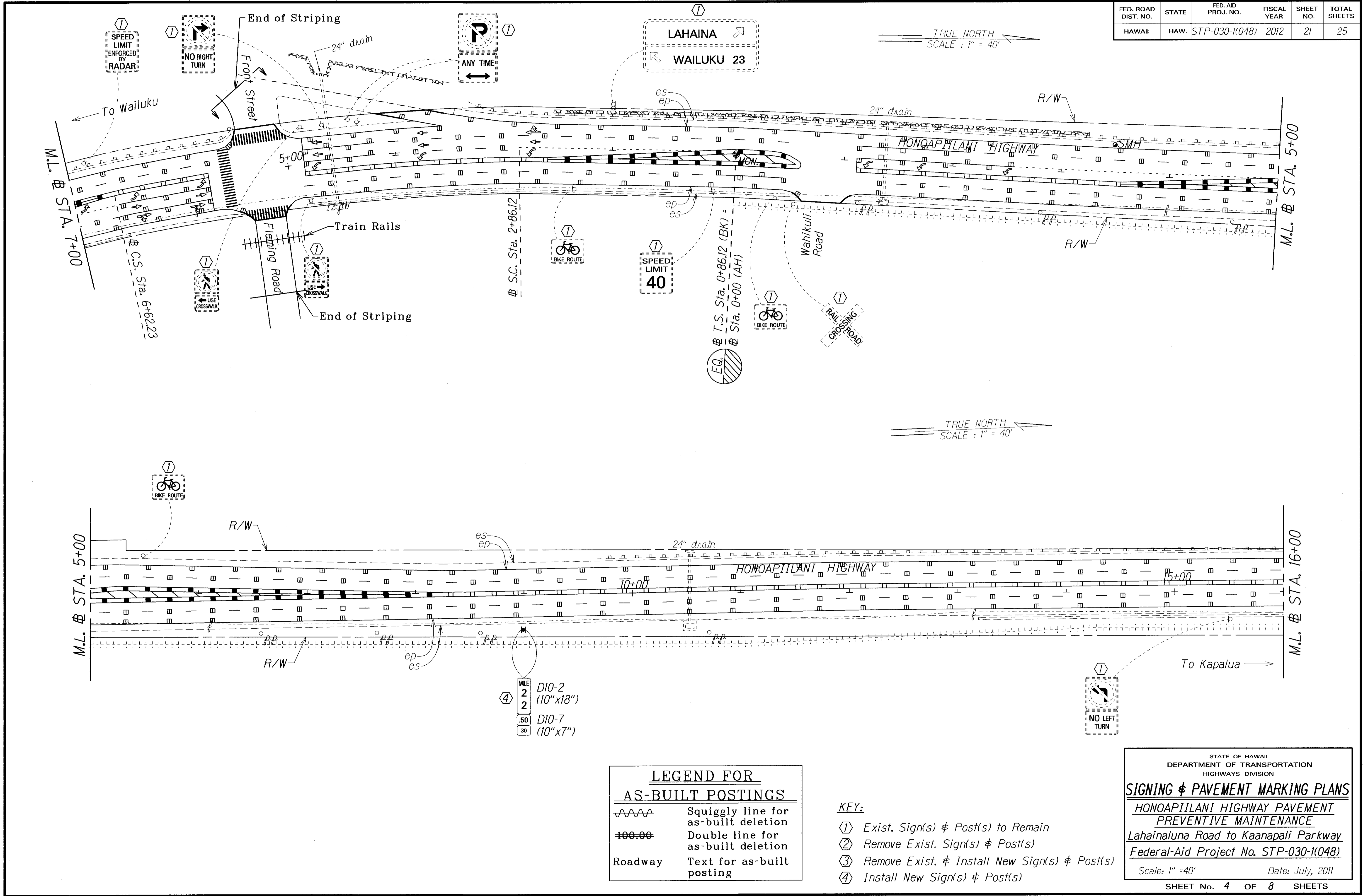
HONOAPIILANI HIGHWAY PAVEMENT PREVENTIVE MAINTENANCE

Lahainaluna Road to Kaanapali Parkway
Federal-Aid Project No. STP-030-1(048)

Scale: 1" = 40' Date: July, 2011

SHEET No. 3 OF 8 SHEETS

| | | | | | |
|---------------------|-------|--------------------|-------------|-----------|--------------|
| FED. ROAD DIST. NO. | STATE | FED. AID PROJ. NO. | FISCAL YEAR | SHEET NO. | TOTAL SHEETS |
| HAWAII | HAW. | STP-030-1(048) | 2012 | 21 | 25 |



| | |
|-------------------|------|
| SURVEY PLOTTED BY | DATE |
| DESIGNED BY | |
| TRACED BY | |
| NOTE BOOK | |
| QUANTITIES BY | |
| CHECKED BY | |

| LEGEND FOR AS-BUILT POSTINGS | |
|------------------------------|-------------------------------------|
| | Squiggly line for as-built deletion |
| | Double line for as-built deletion |
| Roadway | Text for as-built posting |

- KEY:
- ① Exist. Sign(s) & Post(s) to Remain
 - ② Remove Exist. Sign(s) & Post(s)
 - ③ Remove Exist. & Install New Sign(s) & Post(s)
 - ④ Install New Sign(s) & Post(s)

STATE OF HAWAII
DEPARTMENT OF TRANSPORTATION
HIGHWAYS DIVISION

SIGNING & PAVEMENT MARKING PLANS

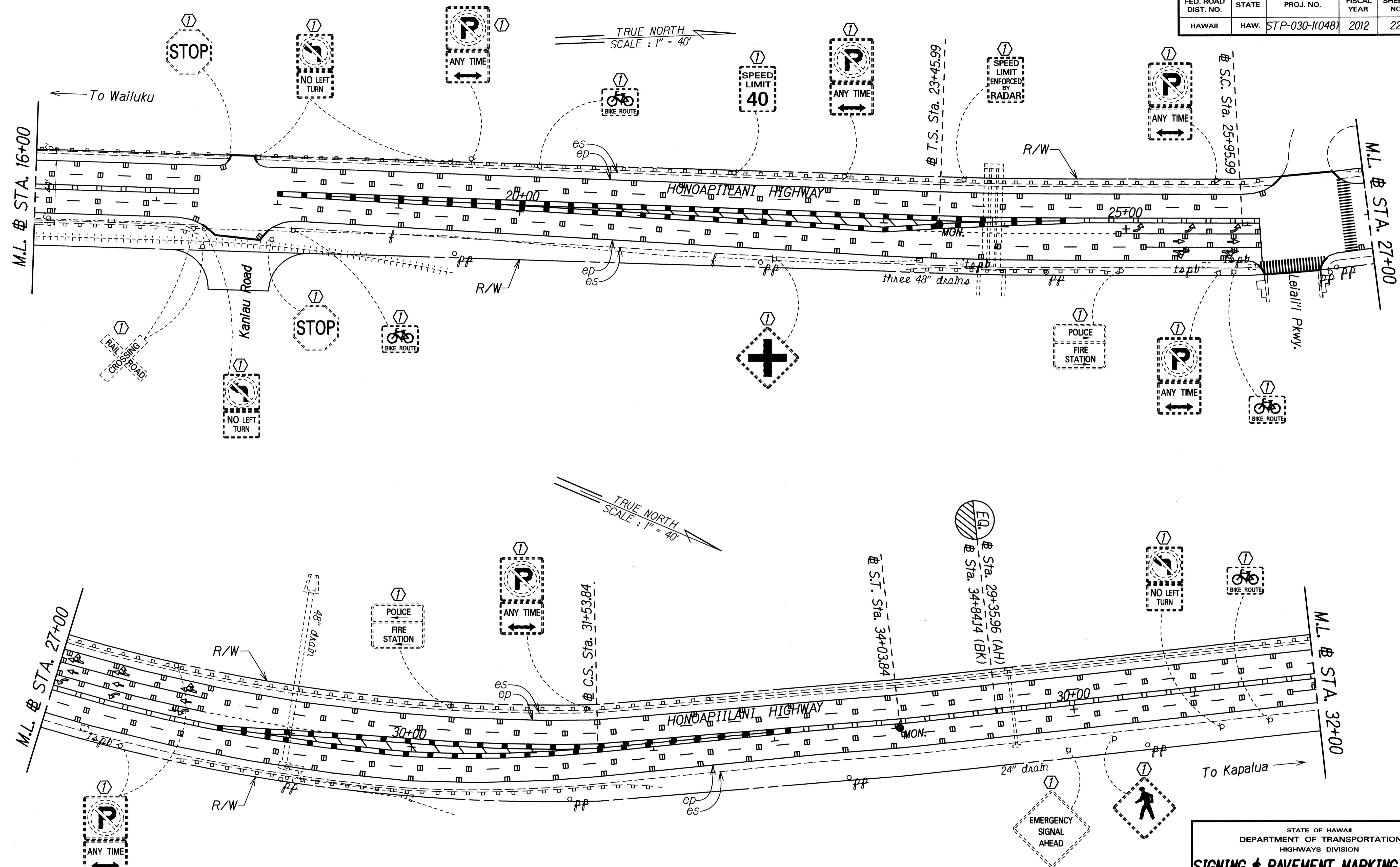
HONOAPIILANI HIGHWAY PAVEMENT PREVENTIVE MAINTENANCE
Lahainaluna Road to Kaaanapali Parkway
Federal-Aid Project No. STP-030-1(048)

Scale: 1" = 40' Date: July, 2011

SHEET No. 4 OF 8 SHEETS

"AS-BUILT"

| FED. ROAD DIST. NO. | STATE | FED. AID PROJ. NO. | FISCAL YEAR | SHEET NO. | TOTAL SHEETS |
|---------------------|-------|--------------------|-------------|-----------|--------------|
| HAWAII | HAW. | STP-030-1(048) | 2012 | 22 | 25 |



| | |
|-------------------|------|
| SURVEY PLOTTED BY | DATE |
| DESIGNED BY | |
| TRACED BY | |
| DESIGNED BY | |
| QUANTITIES BY | |
| CHECKED BY | |
| ORIGINAL PLAN | |
| NOTE BOOK | |
| N. | |

- KEY:**
- ① Exist. Sign(s) & Post(s) to Remain
 - ② Remove Exist. Sign(s) & Post(s)
 - ③ Remove Exist. & Install New Sign(s) & Post(s)
 - ④ Install New Sign(s) & Post(s)

STATE OF HAWAII
DEPARTMENT OF TRANSPORTATION
HIGHWAYS DIVISION

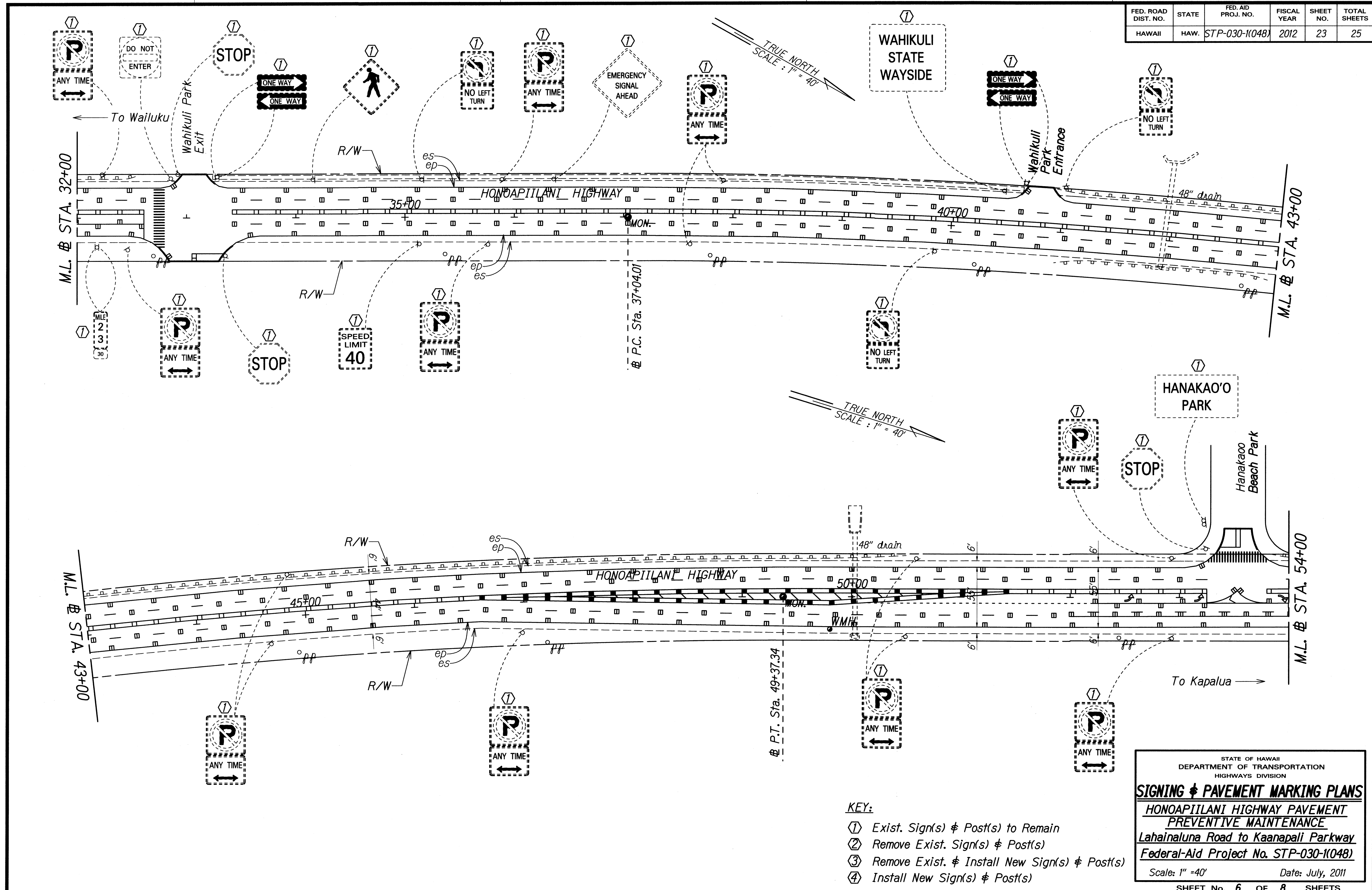
SIGNING & PAVEMENT MARKING PLANS

HONOAPIILANI HIGHWAY PAVEMENT PREVENTIVE MAINTENANCE
Lahainaluna Road to Kaanapali Parkway
Federal-Aid Project No. STP-030-1(048)

Scale: 1" = 40' Date: July, 2011

SHEET No. 5 OF 8 SHEETS

| FED. ROAD DIST. NO. | STATE | FED. AID PROJ. NO. | FISCAL YEAR | SHEET NO. | TOTAL SHEETS |
|---------------------|-------|--------------------|-------------|-----------|--------------|
| HAWAII | HAW. | STP-030-1(048) | 2012 | 23 | 25 |



| | |
|-------------|-------|
| DATE | _____ |
| DESIGNED BY | _____ |
| DRAWN BY | _____ |
| CHECKED BY | _____ |
| IN CHARGE | _____ |
| DATE | _____ |
| DESIGNED BY | _____ |
| DRAWN BY | _____ |
| CHECKED BY | _____ |
| IN CHARGE | _____ |

- KEY:**
- ① Exist. Sign(s) & Post(s) to Remain
 - ② Remove Exist. Sign(s) & Post(s)
 - ③ Remove Exist. & Install New Sign(s) & Post(s)
 - ④ Install New Sign(s) & Post(s)

STATE OF HAWAII
DEPARTMENT OF TRANSPORTATION
HIGHWAYS DIVISION

SIGNING & PAVEMENT MARKING PLANS

**HONOAPIILANI HIGHWAY PAVEMENT
PREVENTIVE MAINTENANCE**

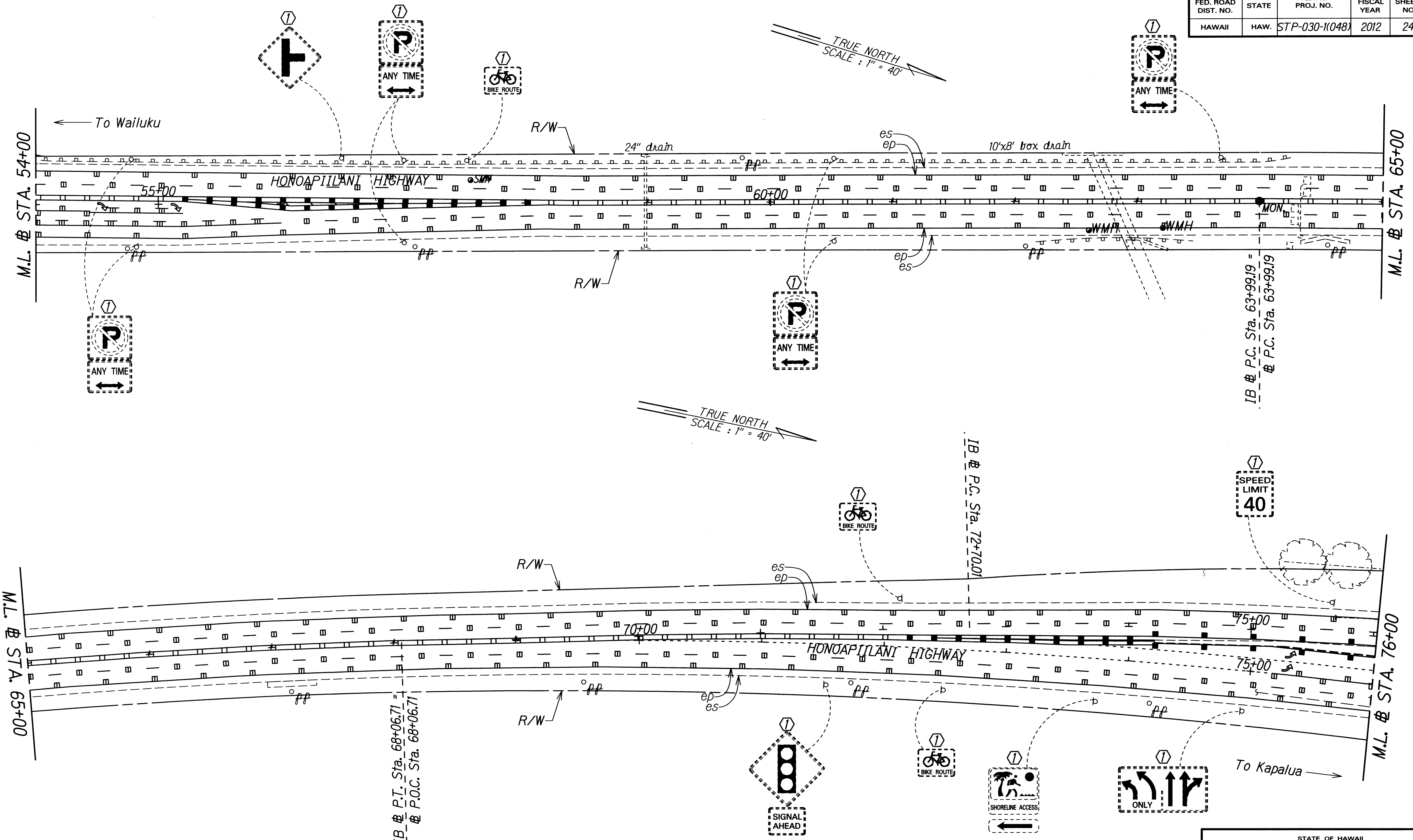
Lahainaluna Road to Kaanapali Parkway

Federal-Aid Project No. STP-030-1(048)

Scale: 1" = 40' Date: July, 2011

SHEET No. 6 OF 8 SHEETS

| FED. ROAD DIST. NO. | STATE | FED. AID PROJ. NO. | FISCAL YEAR | SHEET NO. | TOTAL SHEETS |
|---------------------|-------|--------------------|-------------|-----------|--------------|
| HAWAII | HAW. | STP-030-1(048) | 2012 | 24 | 25 |



| | |
|---------------|------|
| ORIGINAL PLAN | DATE |
| DRAWN BY | |
| DESIGNED BY | |
| QUANTITIES BY | |
| CHECKED BY | |

- KEY:**
- ① Exist. Sign(s) & Post(s) to Remain
 - ② Remove Exist. Sign(s) & Post(s)
 - ③ Remove Exist. & Install New Sign(s) & Post(s)
 - ④ Install New Sign(s) & Post(s)

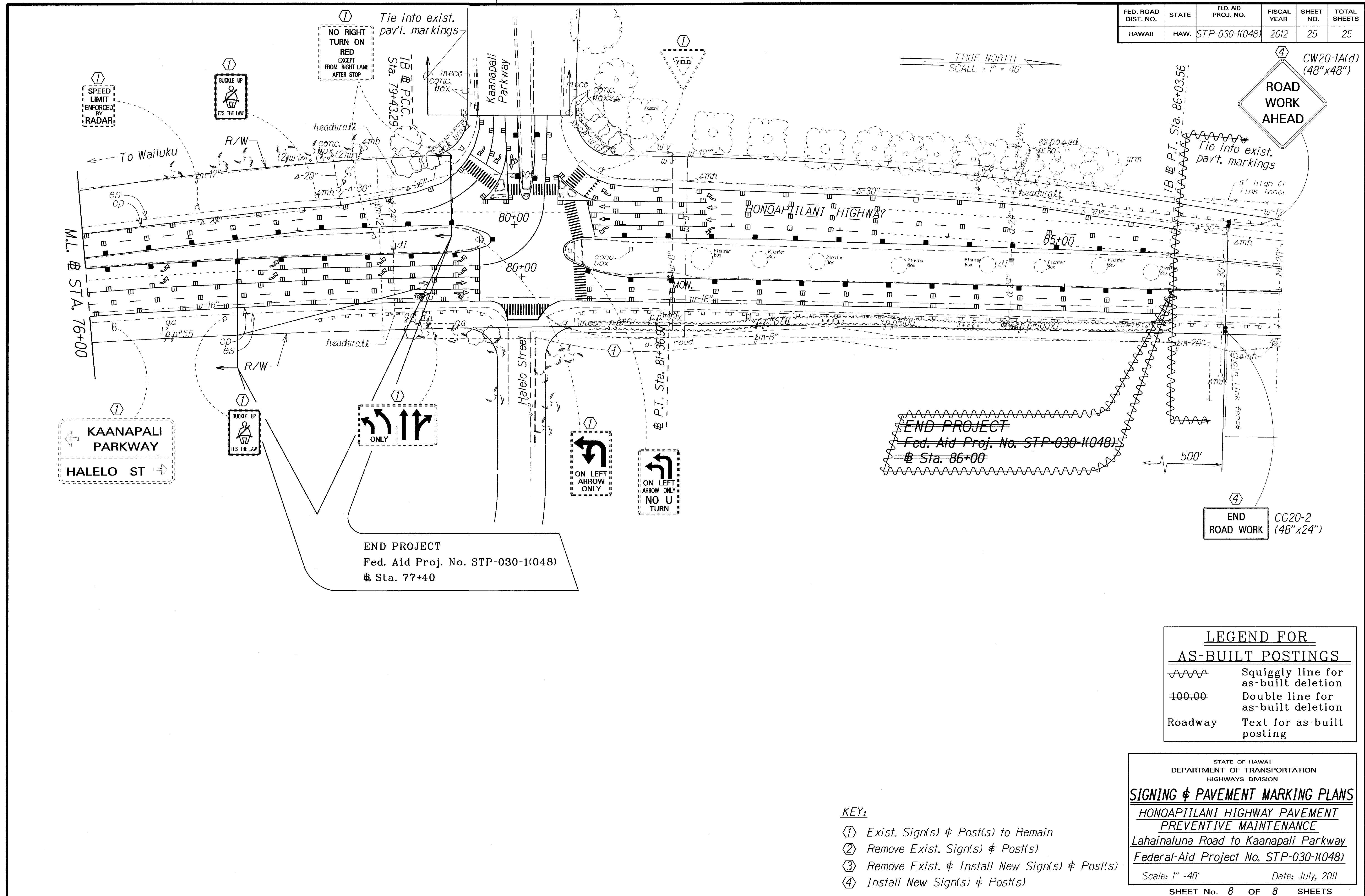
STATE OF HAWAII
DEPARTMENT OF TRANSPORTATION
HIGHWAYS DIVISION

SIGNING & PAVEMENT MARKING PLANS
HONOAPIILANI HIGHWAY PAVEMENT PREVENTIVE MAINTENANCE
Lahainaluna Road to Kaanapali Parkway
Federal-Aid Project No. STP-030-1(048)

Scale: 1" = 40' Date: July, 2011

SHEET No. 7 OF 8 SHEETS

| FED. ROAD DIST. NO. | STATE | FED. AID PROJ. NO. | FISCAL YEAR | SHEET NO. | TOTAL SHEETS |
|---------------------|-------|--------------------|-------------|-----------|--------------|
| HAWAII | HAW. | STP-030-1(048) | 2012 | 25 | 25 |



KAANAPALI PARKWAY
HALELO ST

ONLY

ON LEFT ARROW ONLY

ON LEFT ARROW ONLY
NO U TURN

END PROJECT
Fed. Aid Proj. No. STP-030-1(048)
Sta. 86+00

END PROJECT
Fed. Aid Proj. No. STP-030-1(048)
Sta. 77+40

END ROAD WORK
CG20-2 (48"x24")

ROAD WORK AHEAD
CW20-1A(d) (48"x48")

| | |
|-------------------|------|
| SURVEY PLOTTED BY | DATE |
| DRAWN BY | |
| TRACED BY | |
| DESIGNED BY | |
| QUANTITIES BY | |
| CHECKED BY | |
| ORIGINAL PLAN | |
| NOTE BOOK | |
| No. | |

LEGEND FOR AS-BUILT POSTINGS

| | |
|---------|-------------------------------------|
| | Squiggly line for as-built deletion |
| | Double line for as-built deletion |
| Roadway | Text for as-built posting |

- KEY:**
- ① Exist. Sign(s) & Post(s) to Remain
 - ② Remove Exist. Sign(s) & Post(s)
 - ③ Remove Exist. & Install New Sign(s) & Post(s)
 - ④ Install New Sign(s) & Post(s)

STATE OF HAWAII
DEPARTMENT OF TRANSPORTATION
HIGHWAYS DIVISION

SIGNING & PAVEMENT MARKING PLANS

HONOAPIILANI HIGHWAY PAVEMENT PREVENTIVE MAINTENANCE
Lahainaluna Road to Kaanapali Parkway
Federal-Aid Project No. STP-030-1(048)

Scale: 1" = 40' Date: July, 2011

SHEET No. 8 OF 8 SHEETS

"AS-BUILT"