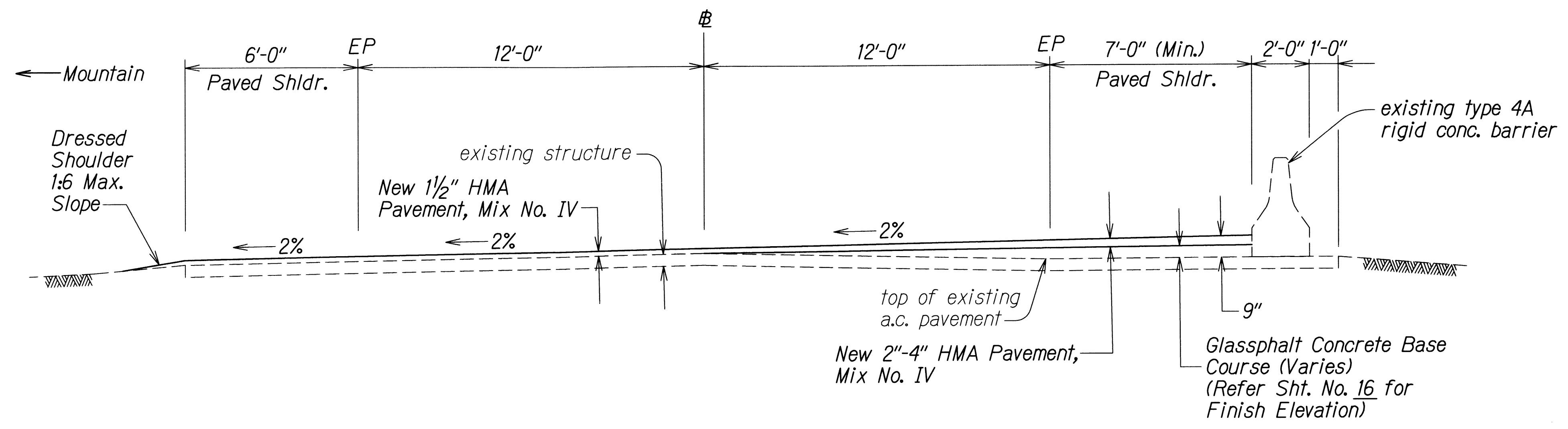
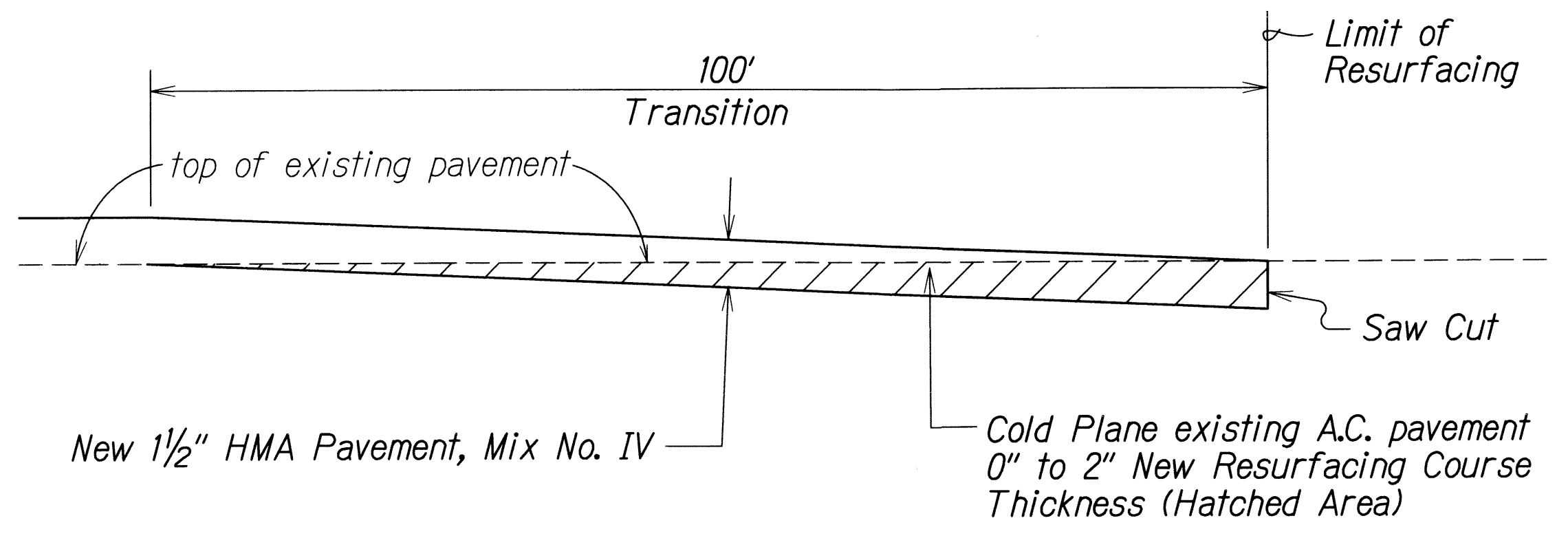


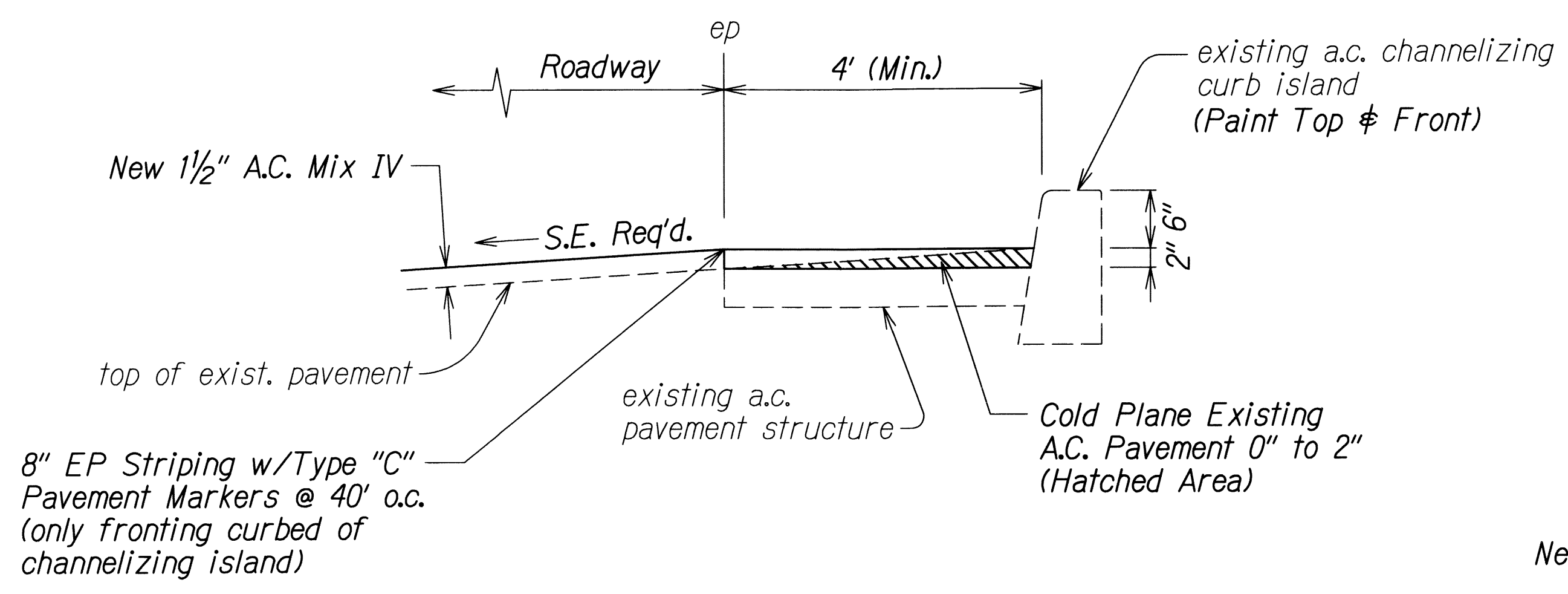
FED. ROAD DIST. NO.	STATE	FED. AID PROJ. NO.	FISCAL YEAR	SHEET NO.	TOTAL SHEETS
HAWAII	HAW.	NH-030-1(047)	2012	6	45



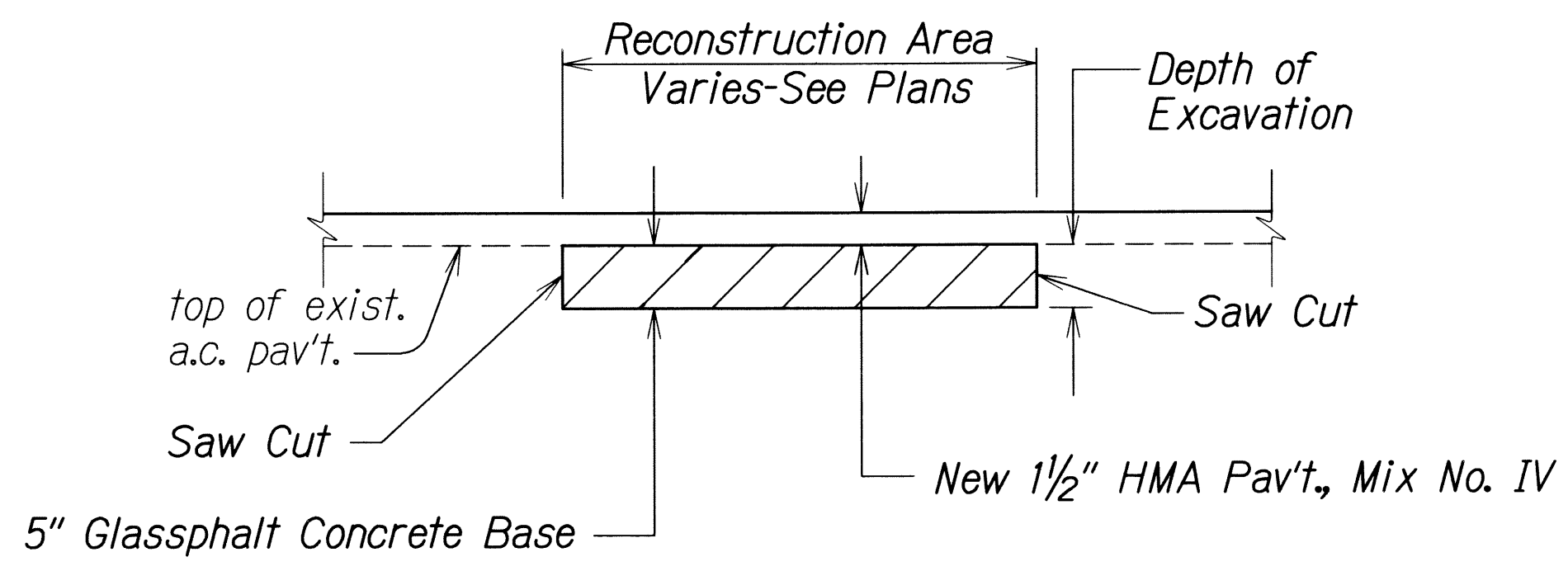
TYPICAL SECTION (STA. 187+00 - STA. 177+00)
Scale: $\frac{3}{8}$ " = 1'-0"



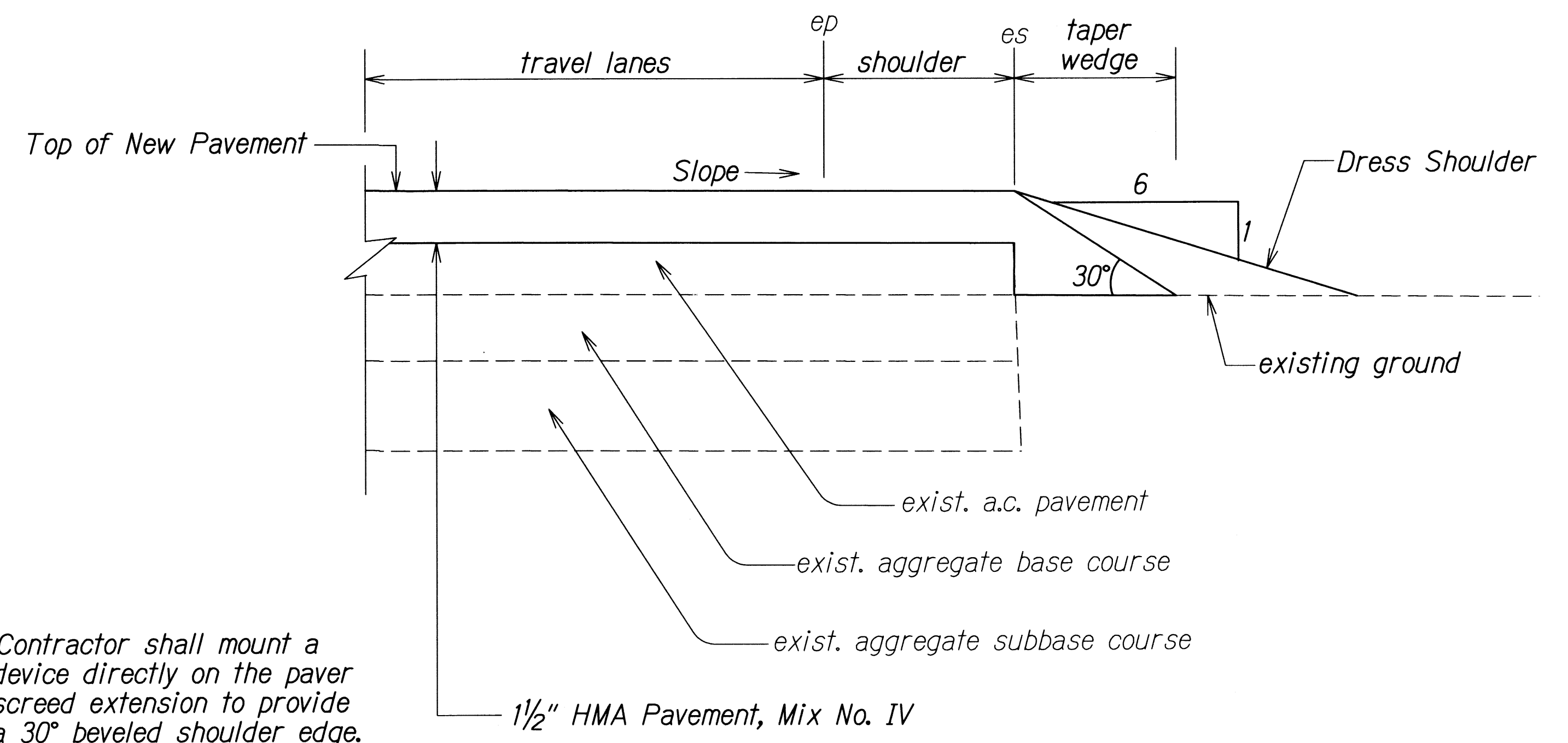
COLD PLANED TRANSITION TO EXISTING A.C. PAVEMENT
Not To Scale



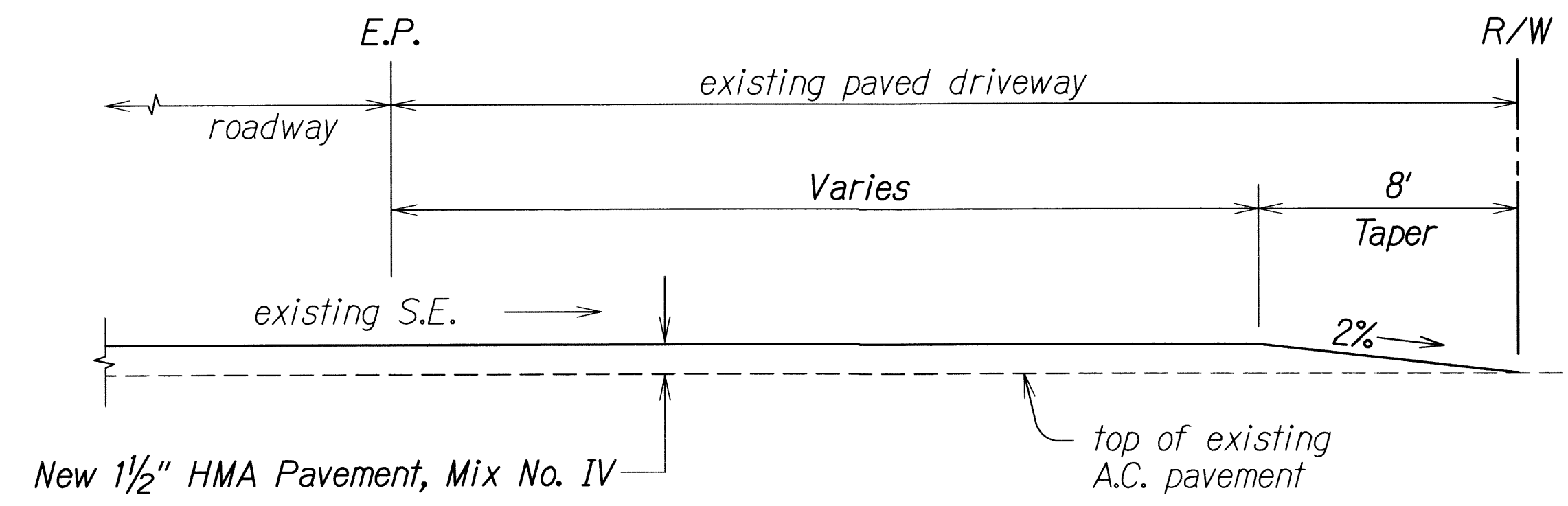
TYPICAL SECTION (STA. 345+40± RT. - STA. 346+20± RT.)
Scale: 1" = 1'-0"



A.C. PAVEMENT RECONSTRUCTION DETAIL
Not To Scale



TYPICAL PAVEMENT EDGE DETAIL
Not To Scale



PAVED DRIVEWAY DETAIL
Not To Scale

STATE OF HAWAII

DEPARTMENT OF TRANSPORTATION

HIGHWAYS DIVISION

TYPICAL SECTIONS & DETAILS

HONOAPIILANI HIGHWAY PAVEMENT PREVENTIVE MAINTENANCE

Vicinity of Wind Farm Access Road to Olowalu

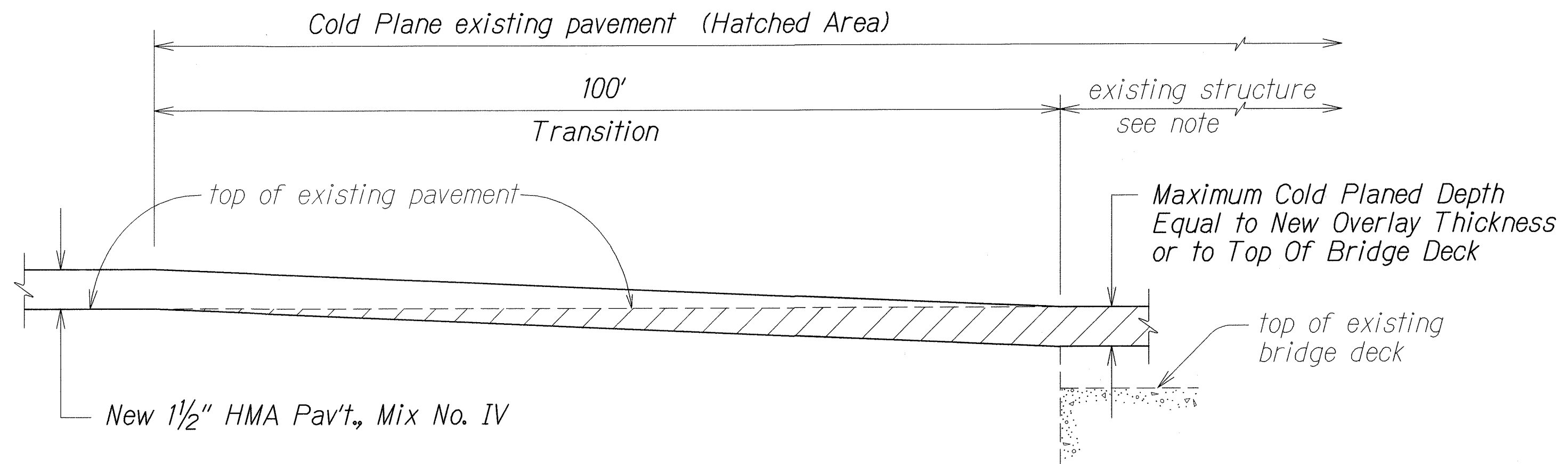
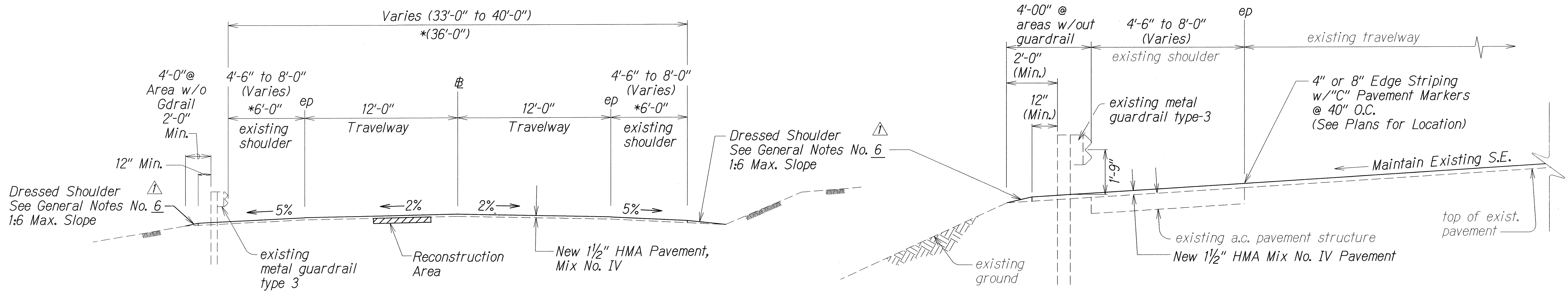
Federal-Aid Project No. NH-030-1(047)

Scale: As Shown Date: July, 2011

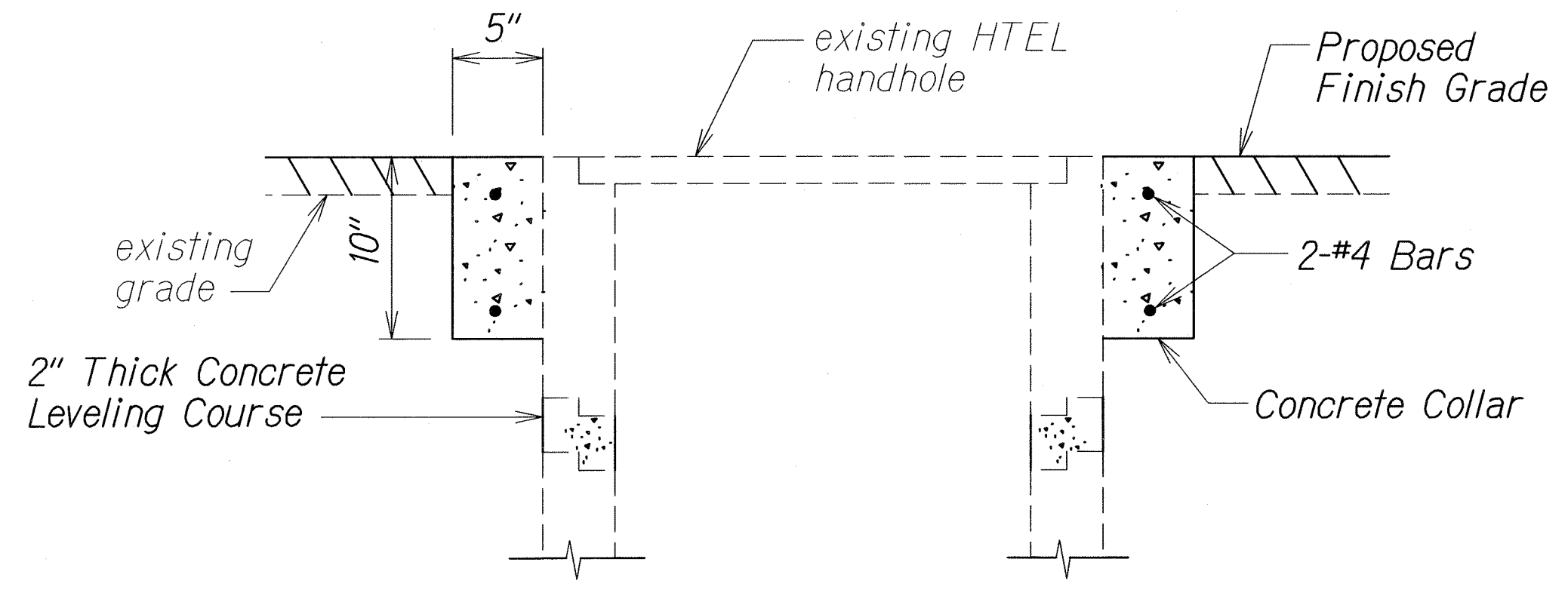
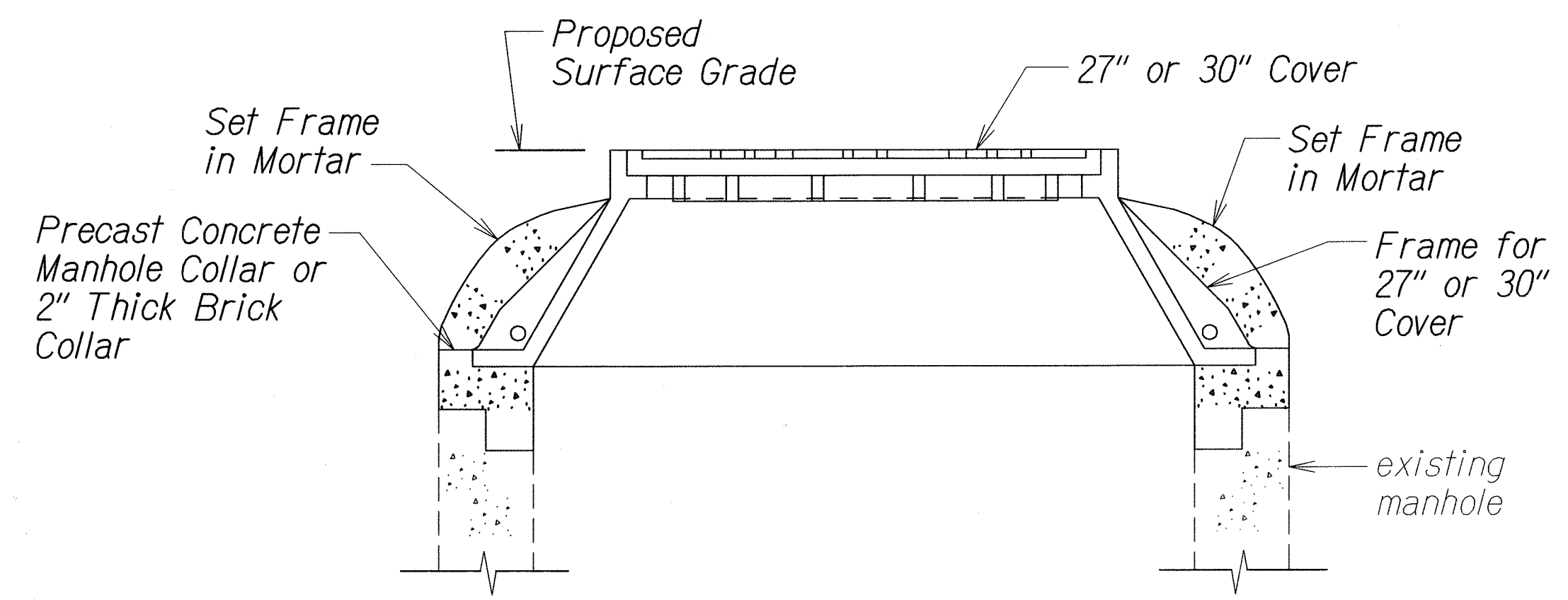
SHEET No. 1 OF 2 SHEETS

SURVEY PLOTTED BY	DATE
DESIGNED BY	04.1.09
TRACED BY	
NOTE BOOK	
DESIGNED BY	
QUANTITIES BY	
CHECKED BY	

FED. ROAD DIST. NO.	STATE	FED. AID PROJ. NO.	FISCAL YEAR	SHEET NO.	TOTAL SHEETS
HAWAII	HAW.	NH-030-1(047)	2012	ADD.7	45



Note: In cold planing the pavement over the structure, the Contractor shall exercise care not to damage any portion of the structure, especially the slab, joints, drainage pipes or reinforcement. Any damage to the structure during the cold planing operations shall be repaired by the Contractor at his expense. Repair work shall be directed by the Engineer. The Contractor shall verify the thickness of the pavement by taking several measurements throughout the structure.



10/25/11	Revised Typical Section Notes.
DATE	REVISION
STATE OF HAWAII DEPARTMENT OF TRANSPORTATION HIGHWAYS DIVISION TYPICAL SECTIONS & DETAILS HONOAPIILANI HIGHWAY PAVEMENT PREVENTIVE MAINTENANCE Vicinity of Wind Farm Access Road to Olowalu Federal-Aid Project No. NH-030-1(047) Scale: As Shown Date: July, 2011 SHEET No. 2 OF 2 SHEETS	

SURVEY PLOTTED BY	DATE
DRAWN BY	10/25/11
TRACED BY	
CHECKED BY	
NOTED BY	
DESIGNED BY	
APPROVED BY	
ORIGINAL PLAN	
NOTE BOOK	
log in: lay	
04/01/11	