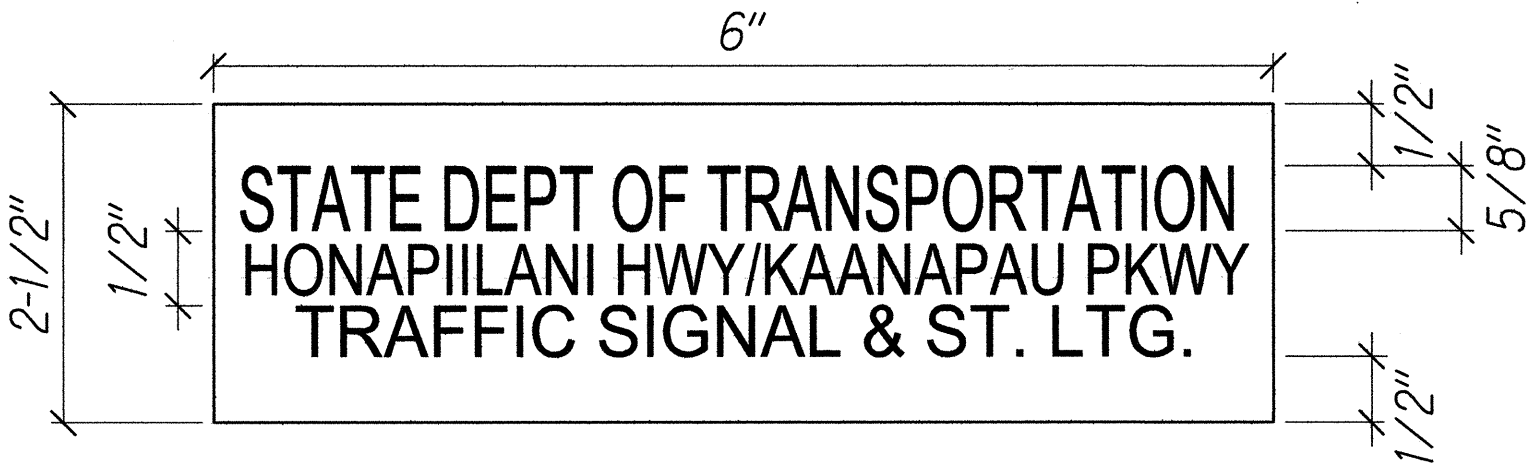


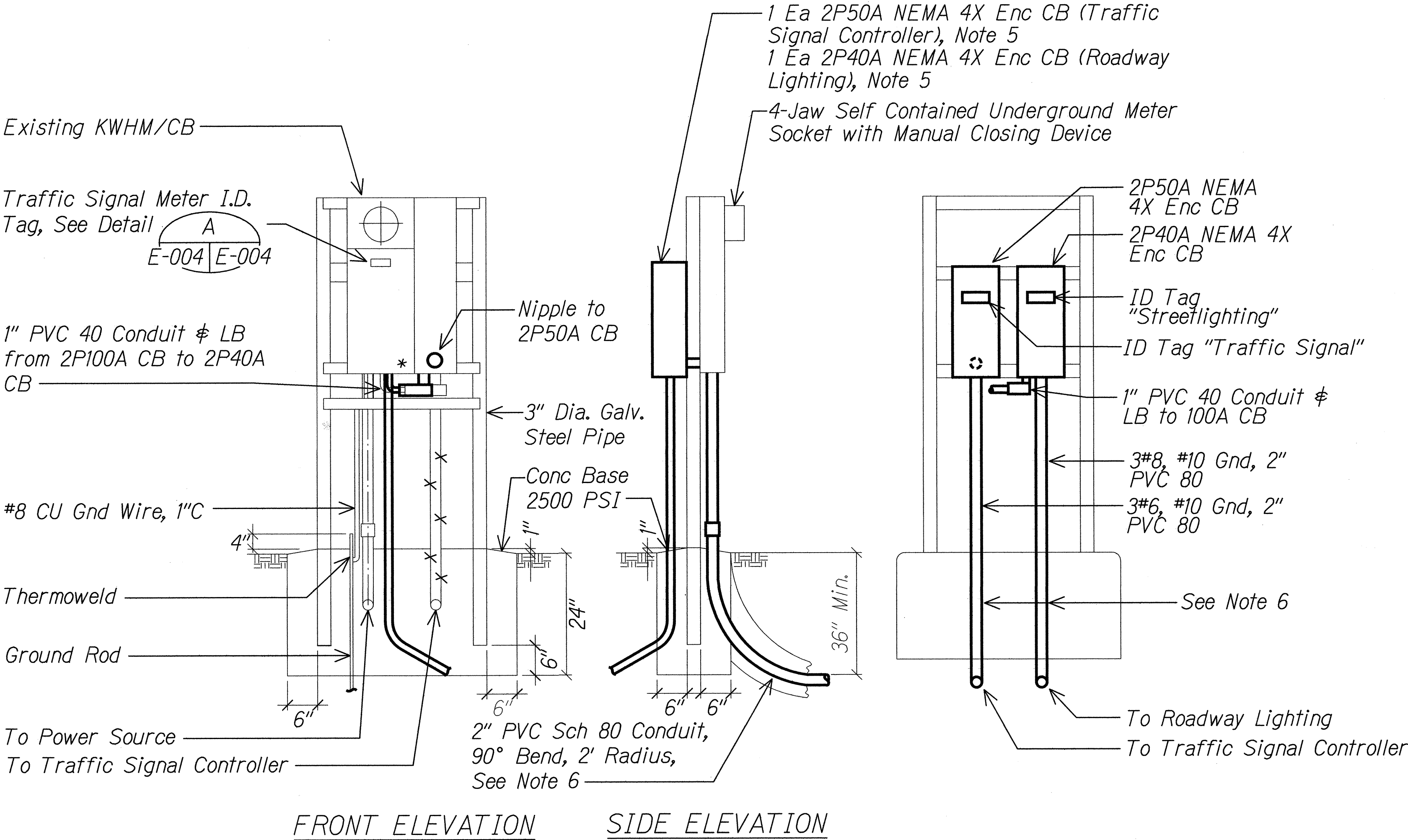
FED. ROAD DIST. NO.	STATE	PROJ. NO.	FISCAL YEAR	SHEET NO.	TOTAL SHEETS
HAWAII	HAW.	HSIP-030-1(42)	2013	18	21



A **METER I.D. TAG DETAIL**
E-004 E-004 NTS DUCT-100

NOTES:

1. Use 3-Ply Laminated Flexible Plastic, Black-White-Black Tickness: Black Cap Sheet - 0.010", White Base Sheet - 0.052", Black Base Sheet - 0.010".
2. Attach to Meter Box UsingScotch 3M Brand Very High Bond (VHB) Double Coated Acrylic Foam Tape or Equivalent.
3. Letters/Numbers Shall be 1/16" Stroke, (White in Color).
3. Leters/Numbers Shall be Inscribed by Cutting Through "Black Cap Sheet" to Expose White Letters/Numbers.



B **SERVICE AND METERING EQUIPMENT ASSEMBLY DETAIL**
E-002 E-004 NTS DUCT-100

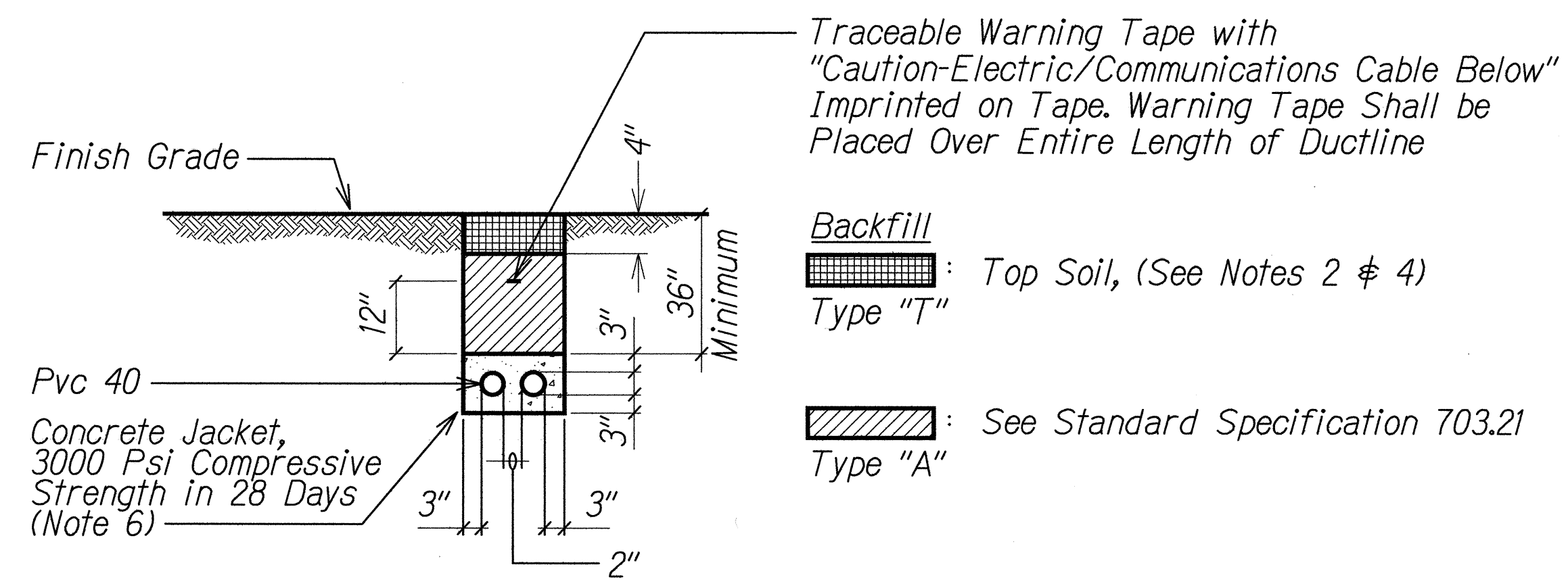
NOTES:

1. Pedestal Shall be Hot Dipped Galvanized After Fabrication.
2. All Fastening Bolts, Nuts, and Washers Shall be Stainless Steel.
3. Provide 4 Feet Clearance in Front of Meter.
4. * Denotes Sealable, NEMA 3R.
5. Provide Addition Structure to Support New Equipment. All Material Shall be Hot Dipped Galvanized Steel, use Stainless Steel Fasteners.
6. Chip Existing Concrete Foundation to Receive New Conduits and Restore Foundation After New Conduits are Installed.

SURVEY PLOTTED BY	DATE
DRAWN BY	
DESIGNED BY	
QUANTITIES BY	
CHECKED BY	
ORIGINAL PLAN	
NOTE BOOK	
N.	

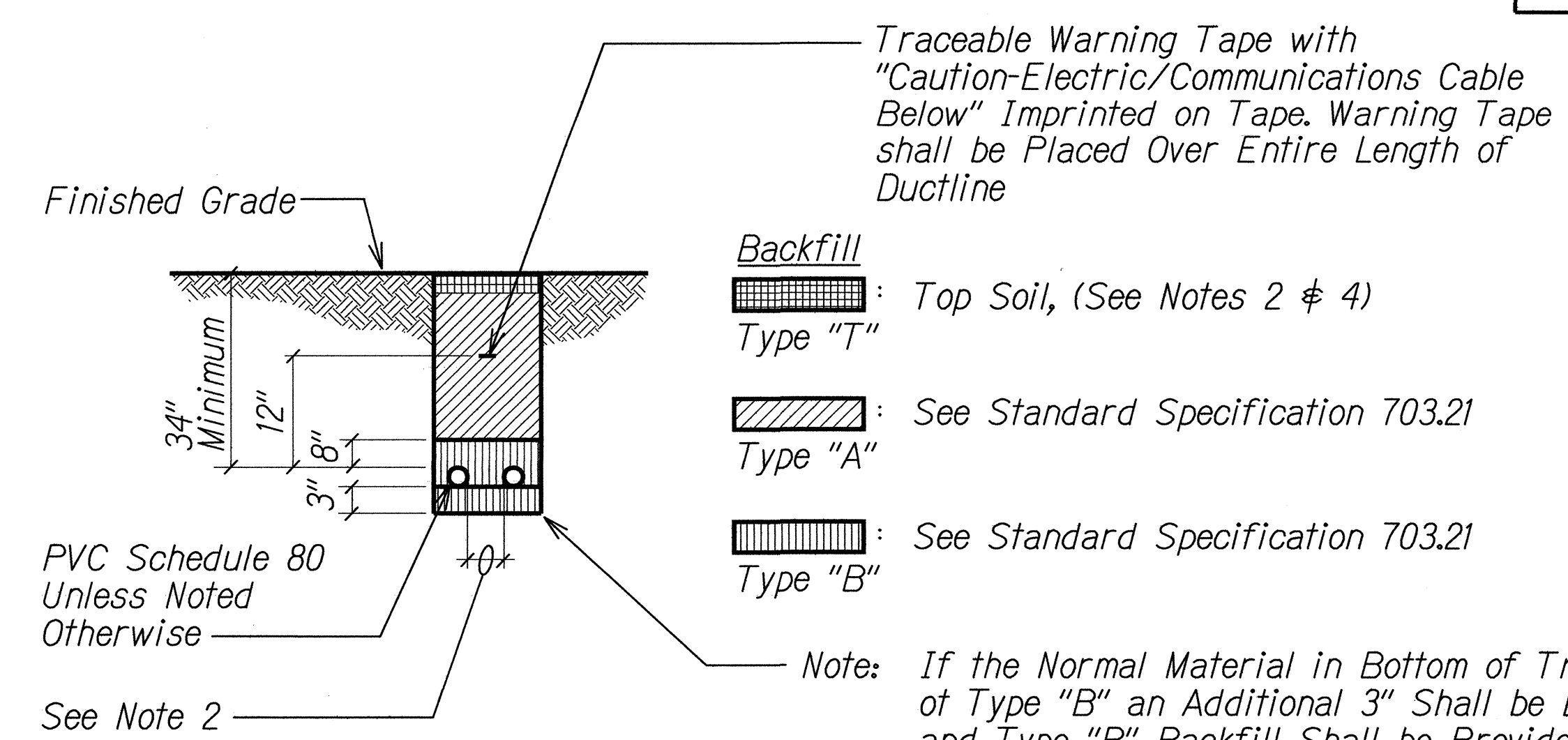
STATE OF HAWAII
DEPARTMENT OF TRANSPORTATION
HIGHWAYS DIVISION
MISCELLANEOUS DETAILS
HONAPIILANI HIGHWAY, SAFETY IMPROVEMENTS AT KAAHAPALI PARKWAY AND HALELO STREET
Federal Aid Project No. HSIP-030-1(42)
Scale: As Noted Date: July 2013
SHEET No. E-004 OF 7 SHEETS

FED. ROAD DIST. NO.	STATE	PROJ. NO.	FISCAL YEAR	SHEET NO.	TOTAL SHEETS
HAWAII	HAW.	HSIP-030-1(42)	2013	19	21



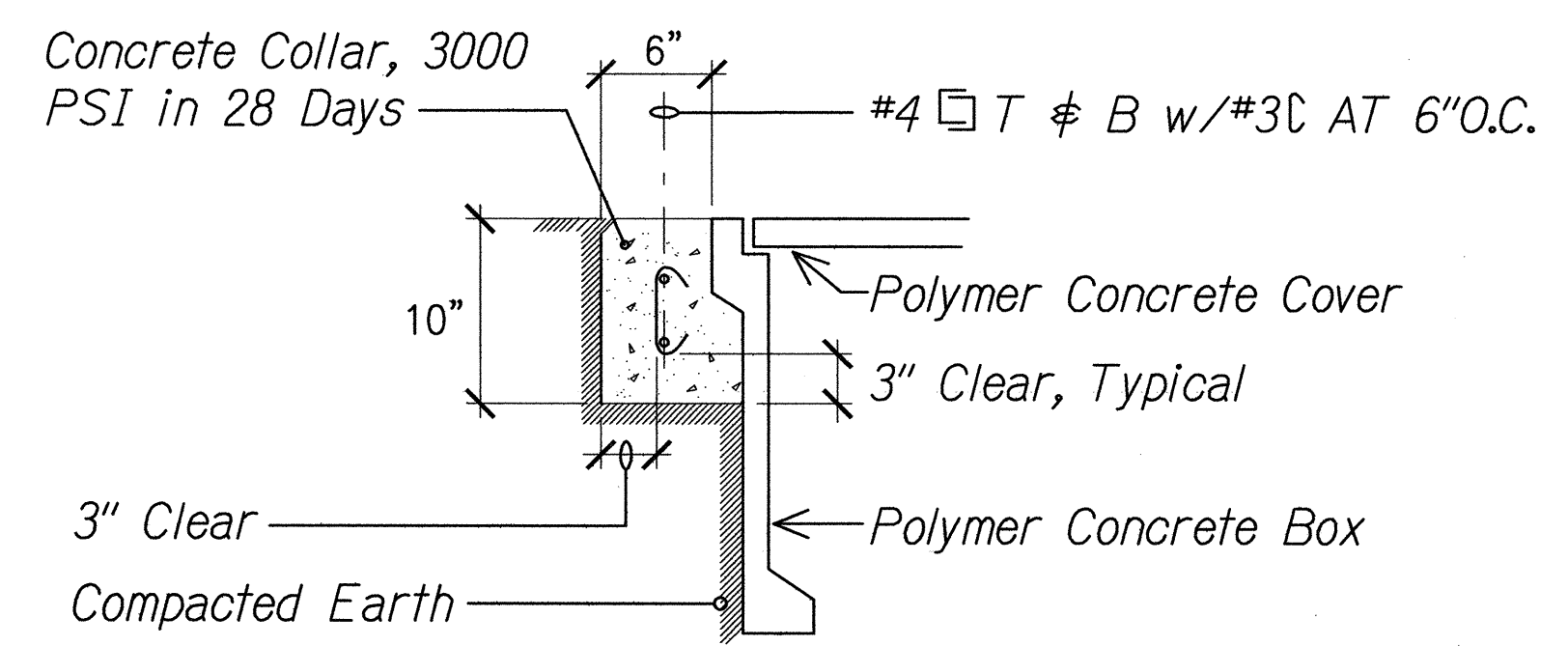
A TYPICAL DUCT SECTION (CONCRETE-ENCASED)
E-005 | E-005 FOR UNPAVED AREA

- NTS
- NOTES:**
1. Provide 2" Separation Between Ducts of Same System and 3" Between Ducts of Different Systems.
 2. Where Trench Encounters Grass or Landscaping, Provide 4" Top Soil After Trench is Backfilled, and Restore Landscaping to Match Existing Adjacent Areas.
 3. See Duct Section Details for Conduit Arrangement.
 4. Where Trench Encounters Existing Concrete Sidewalk, Sidewalk Shall be Demolished. Backfill, Compact and Replace Sidewalk to Match Existing. Omit Top Soil in Trench Restoration and Provide Minimum 4" Thick Concrete Sidewalk to Match Original Finish. Replace Entire Width of Sidewalk so that there is No Evidence that a Duct was Installed Below the Sidewalk.
 5. See State Highway Standard Plan TE-36 for Trench Details at Asphalt Concrete Pavement Areas.

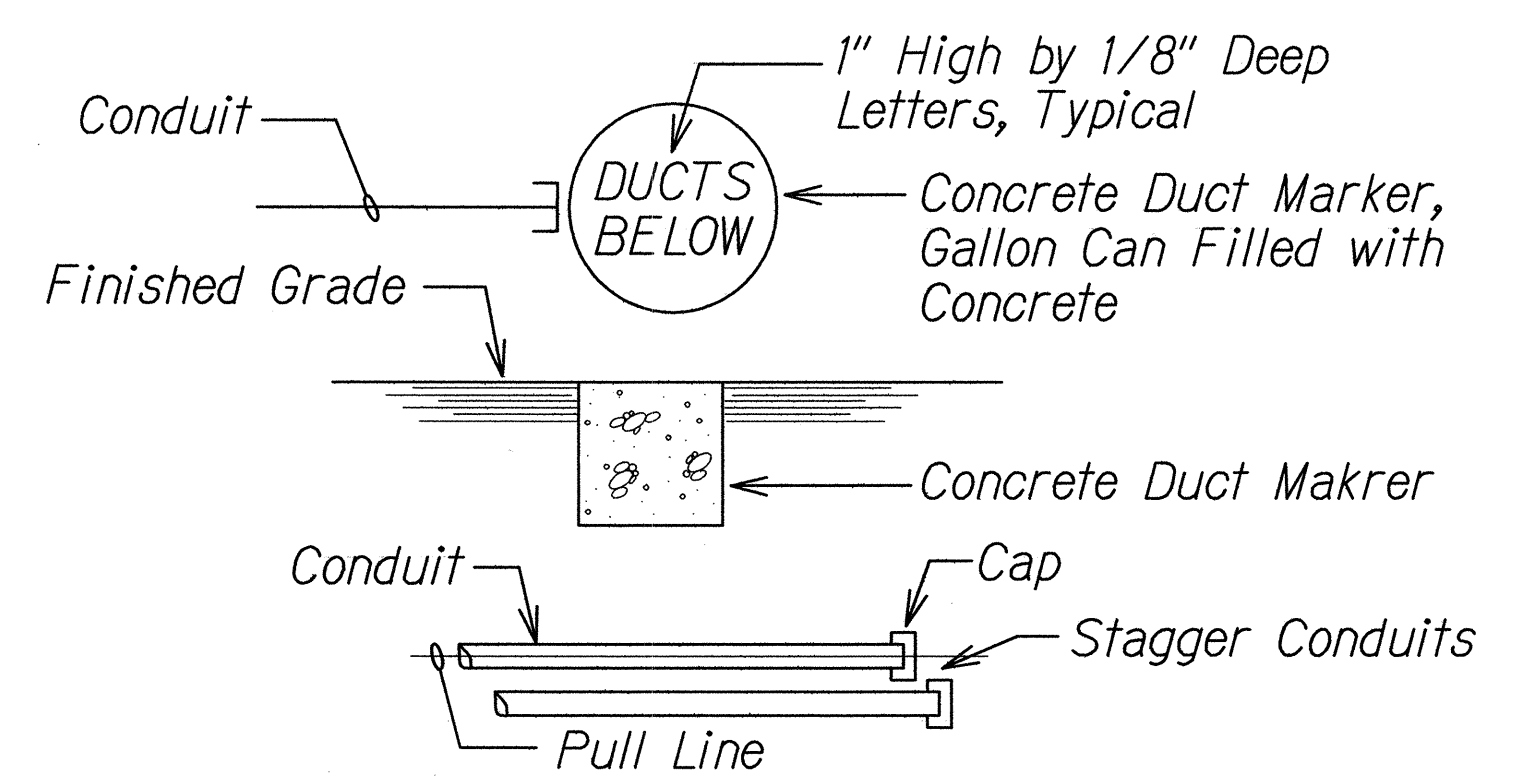


b TYPICAL DUCT SECTION (DIRECT BURIED) FOR UNPAVED AREA
E-005 | E-005 NTS

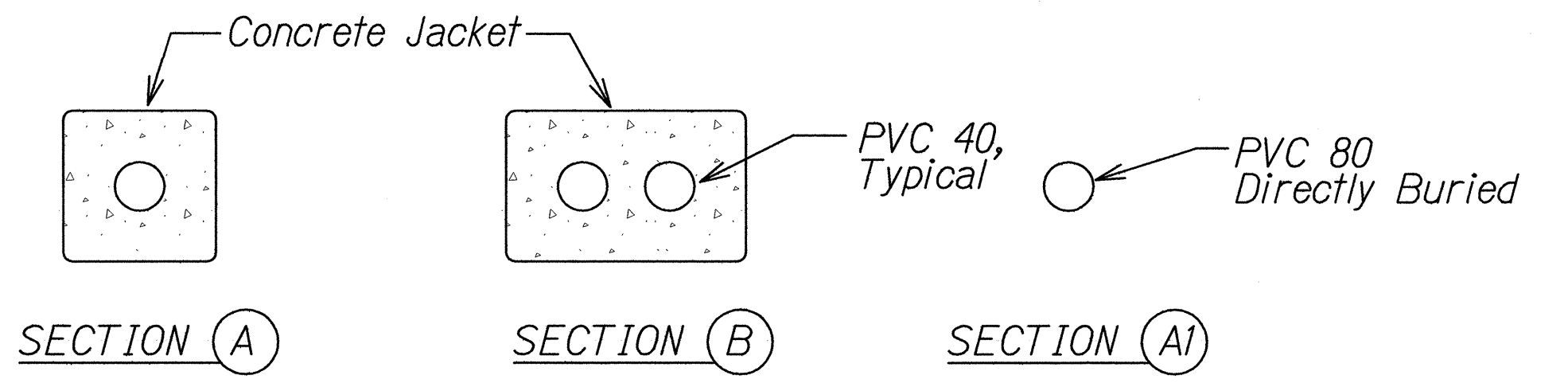
- NOTES:**
1. Provide 3" Separation Between Ducts of Same System and 12" Separation Between Electrical Ducts and Ducts of Different Systems.
 2. Where Trench Encounters Grass or Landscaping, Provide 4" Top Soil After Trench is Backfilled, and Restore Landscaping to Match Existing Adjacent Areas.
 3. See Duct Section Details for Conduit Arrangement.
 4. Where Trench Encounters Existing Concrete Sidewalk, Sidewalk Shall be Demolished. Backfill, Compact and Replace Sidewalk to Match Existing. Omit Top Soil in Trench Restoration and Provide Minimum 4" Thick Concrete Sidewalk to Match Original Finish. Replace Entire Width of Sidewalk so that there is No Evidence that a Duct was Installed Below the Sidewalk.



C CONCRETE COLLAR RING
E-001 | E-005 NTS



D DUCT MARKER DETAIL
E-005 | E-005 NTS



DUCT SECTION DETAILS

- NOTES:**
1. See Standard Plan TE-36 for Trench Details in Asphalt Concrete Paved Areas.
 2. See Details on this Sheet for Trench Details in Non-Traffic Areas.

RUSSELL K. MOORE
LICENSED PROFESSIONAL ENGINEER
No. 9013-E
HAWAII, U.S.A.

STATE OF HAWAII
DEPARTMENT OF TRANSPORTATION
HIGHWAYS DIVISION

MISCELLANEOUS DETAILS

HONOAPIILANI HIGHWAY, SAFETY IMPROVEMENTS AT KAAHAPALI PARKWAY AND HALELO STREET
Federal Aid Project No. HSIP-030-1(42)

Scale: As Noted Date: July 2013