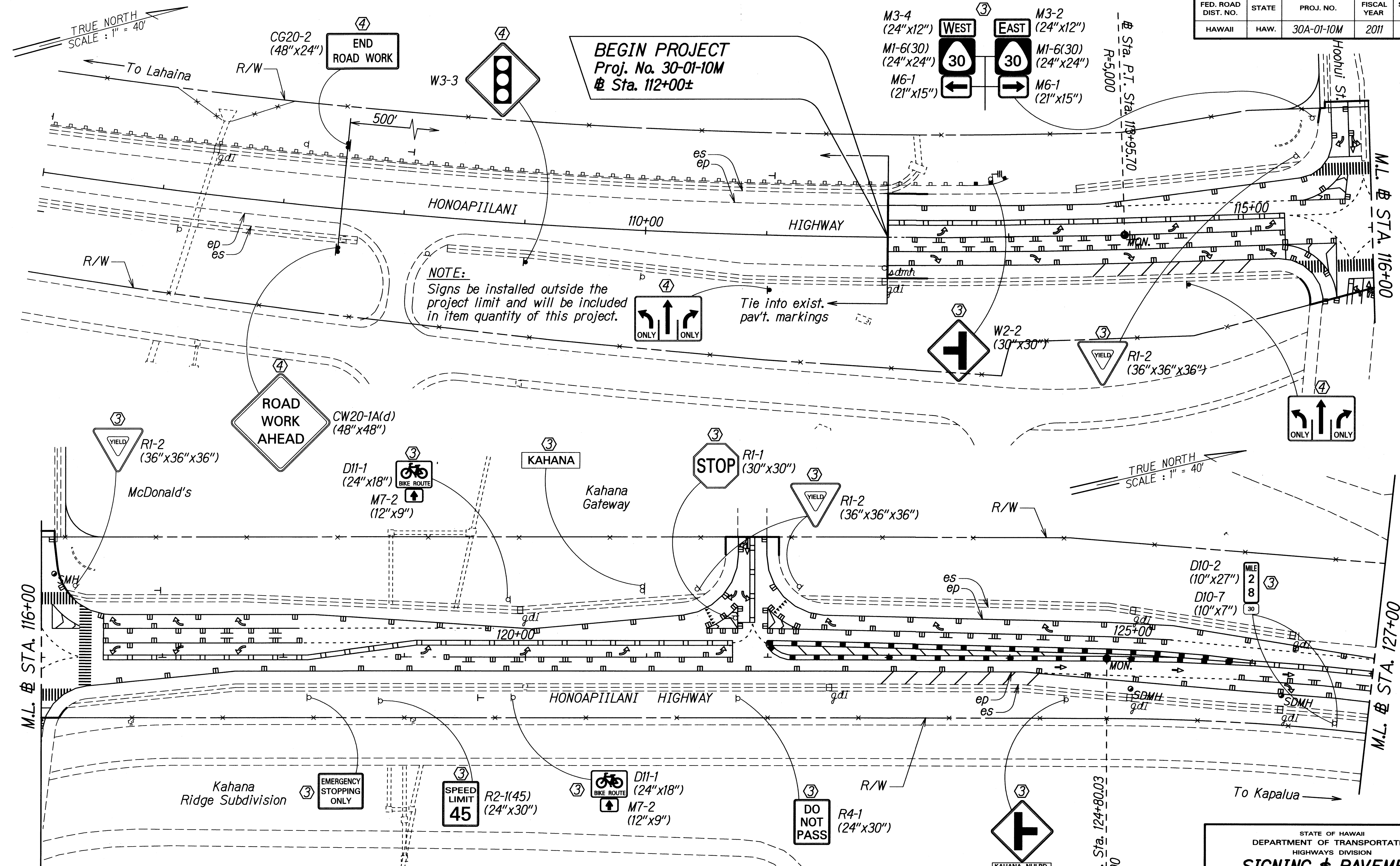


FED. ROAD DIST. NO.	STATE	PROJ. NO.	FISCAL YEAR	SHEET NO.	TOTAL SHEETS
HAWAII	HAW.	30A-01-10M	2011	32	40



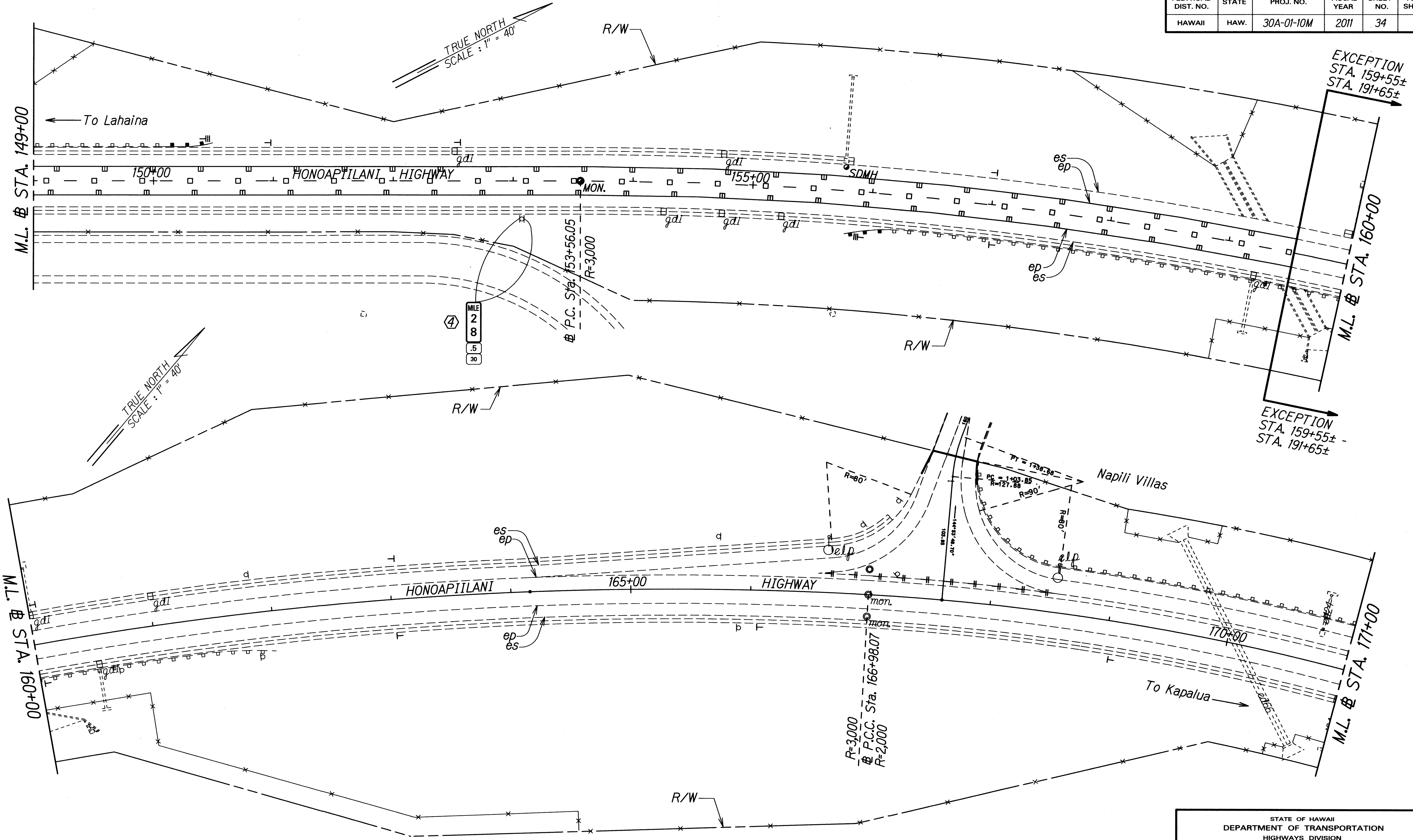
- KEY:**
- ① Exist. Sign(s) & Post(s) to Remain
  - ② Remove Exist. Sign(s) & Post(s)
  - ③ Remove Exist. & Install New Sign(s) & Post(s)
  - ④ Install New Sign(s) & Post(s)

SURVEY PLOTTED BY: \_\_\_\_\_ DATE: \_\_\_\_\_  
 ORIGINAL PLAN: \_\_\_\_\_  
 DRAWN BY: \_\_\_\_\_  
 NOTED BOOK: \_\_\_\_\_  
 DESIGNED BY: \_\_\_\_\_  
 CHECKED BY: \_\_\_\_\_  
 DATE: \_\_\_\_\_

STATE OF HAWAII  
 DEPARTMENT OF TRANSPORTATION  
 HIGHWAYS DIVISION  
**SIGNING & PAVEMENT MARKING PLAN**  
**HONOAPIILANI HIGHWAY RESURFACING**  
 Vicinity of Hoohui Road to Plantation Estates Golf Course  
 Project No. 30A-01-10M  
 Scale: 1" = 40' Date: May, 2009  
 SHEET No. 1 OF 9 SHEETS



FED. ROAD DIST. NO.	STATE	PROJ. NO.	FISCAL YEAR	SHEET NO.	TOTAL SHEETS
HAWAII	HAW.	30A-01-10M	2011	34	40



SURVEY PLOTTED BY	DATE
DRAWN BY	
DESIGNED BY	
CHECKED BY	
ORIGINAL PLAN	
NOTE BOOK	
NO. 1000	
DATE	
BY	
NO.	

- KEY:**
- ① Exist. Sign(s) & Post(s) to Remain
  - ② Remove Exist. Sign(s) & Post(s)
  - ③ Remove Exist. & Install New Sign(s) & Post(s)
  - ④ Install New Sign(s) & Post(s)

STATE OF HAWAII  
DEPARTMENT OF TRANSPORTATION  
HIGHWAYS DIVISION

**SIGNING & PAVEMENT  
MARKING PLAN**

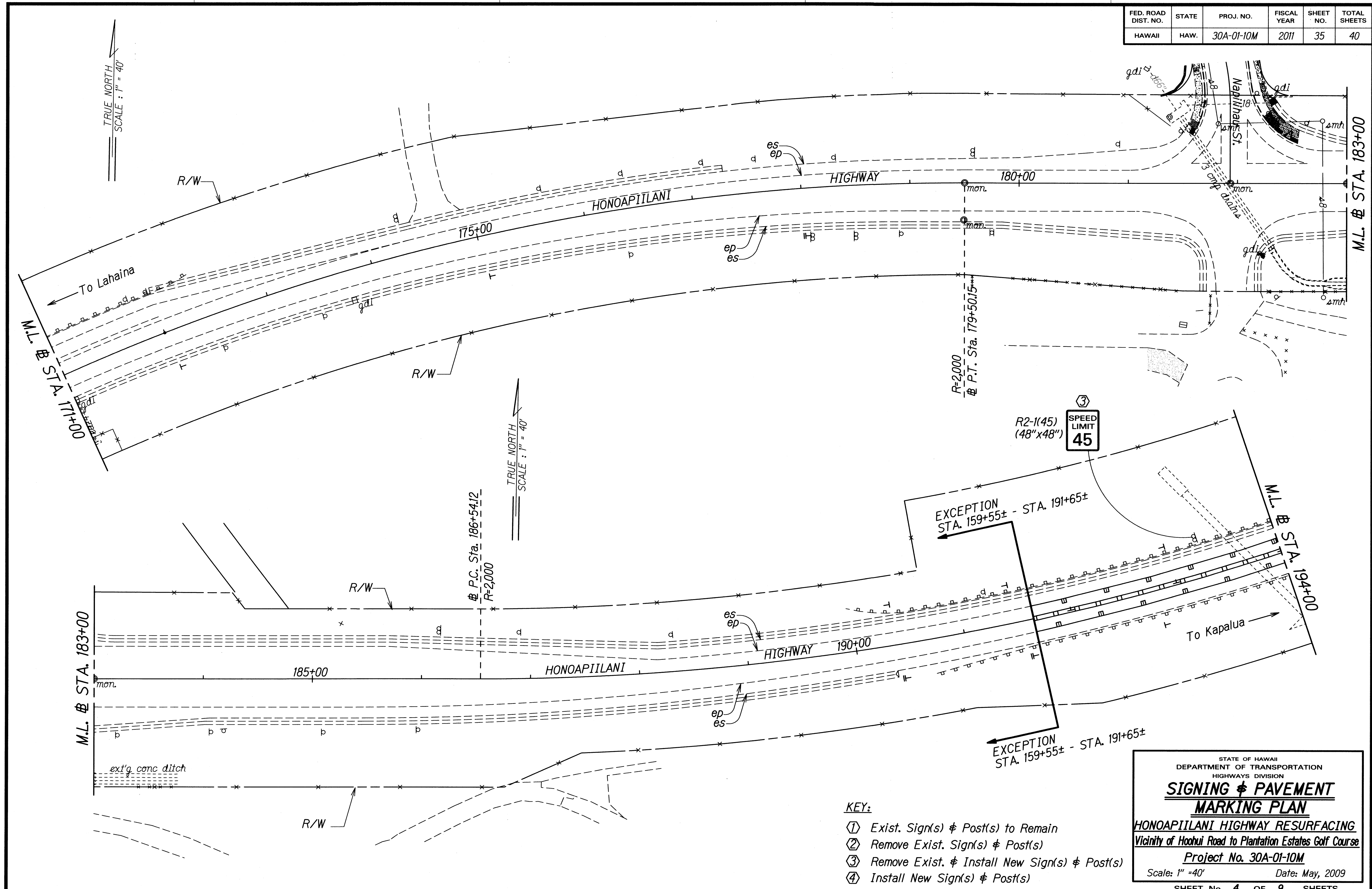
**HONOAPIILANI HIGHWAY RESURFACING**  
Vicinity of Hoohei Road to Plantation Estates Golf Course

**Project No. 30A-01-10M**

Scale: 1" = 40'      Date: May, 2009

SHEET No. 3 OF 9 SHEETS

FED. ROAD DIST. NO.	STATE	PROJ. NO.	FISCAL YEAR	SHEET NO.	TOTAL SHEETS
HAWAII	HAW.	30A-01-10M	2011	35	40



DESIGNED BY	DATE
DRAWN BY	
TRACED BY	
DESIGNED BY	
QUANTITIES BY	
CHECKED BY	

- KEY:**
- ① Exist. Sign(s) & Post(s) to Remain
  - ② Remove Exist. Sign(s) & Post(s)
  - ③ Remove Exist. & Install New Sign(s) & Post(s)
  - ④ Install New Sign(s) & Post(s)

STATE OF HAWAII  
DEPARTMENT OF TRANSPORTATION  
HIGHWAYS DIVISION

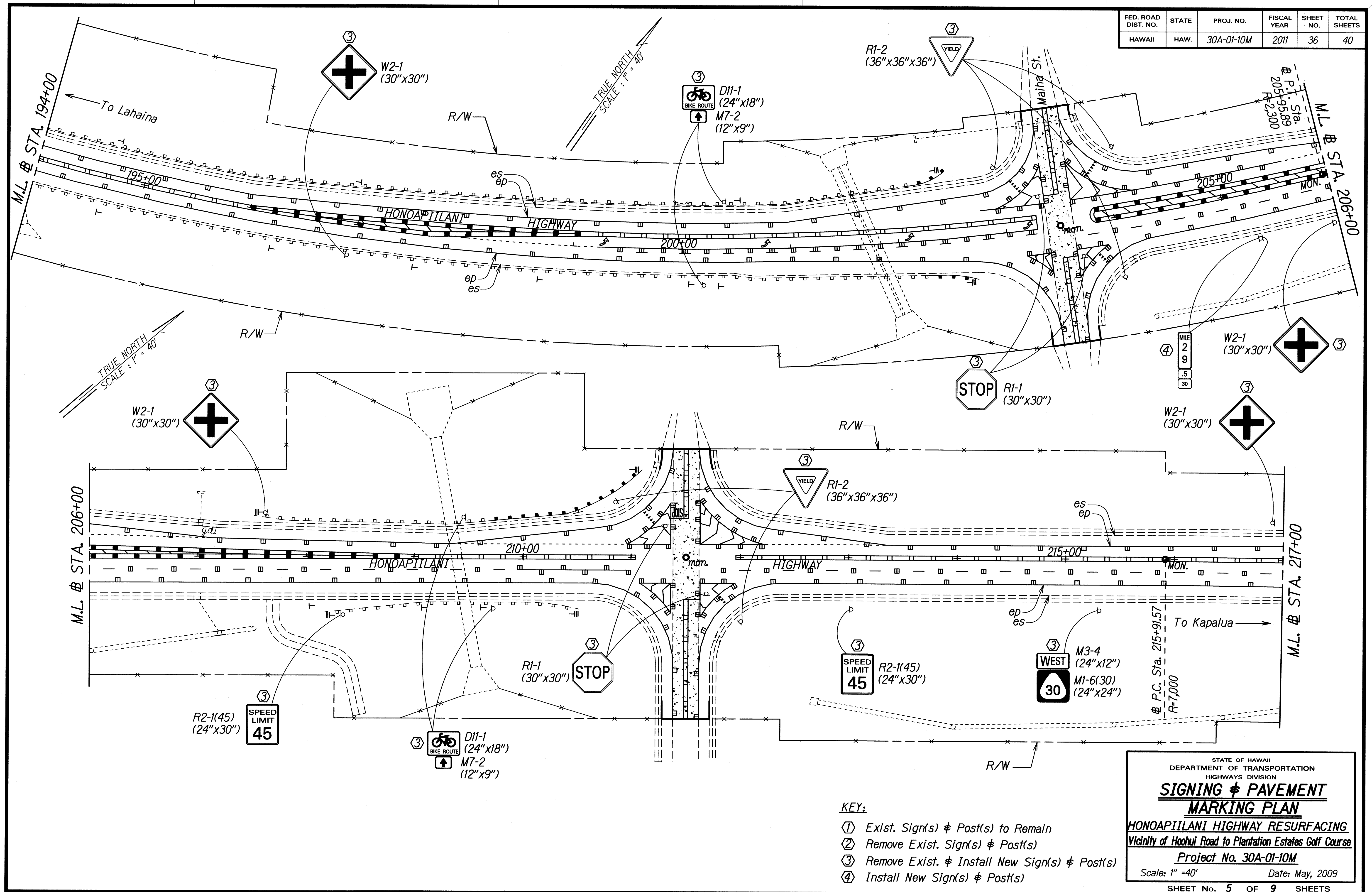
**SIGNING & PAVEMENT  
MARKING PLAN**

**HONOAPIILANI HIGHWAY RESURFACING**  
Vicinity of Hooihui Road to Plantation Estates Golf Course  
Project No. 30A-01-10M

Scale: 1" = 40'      Date: May, 2009

SHEET No. 4 OF 9 SHEETS

FED. ROAD DIST. NO.	STATE	PROJ. NO.	FISCAL YEAR	SHEET NO.	TOTAL SHEETS
HAWAII	HAW.	30A-01-10M	2011	36	40



TRUE NORTH  
SCALE: 1" = 40'

TRUE NORTH  
SCALE: 1" = 40'

DATE: \_\_\_\_\_  
 SURVEY PLOTTED BY: \_\_\_\_\_  
 DRAWN BY: \_\_\_\_\_  
 DESIGNED BY: \_\_\_\_\_  
 CHECKED BY: \_\_\_\_\_  
 ORIGINAL PLAN NOTE BOOK NO. \_\_\_\_\_

- KEY:**
- ① Exist. Sign(s) & Post(s) to Remain
  - ② Remove Exist. Sign(s) & Post(s)
  - ③ Remove Exist. & Install New Sign(s) & Post(s)
  - ④ Install New Sign(s) & Post(s)

STATE OF HAWAII  
 DEPARTMENT OF TRANSPORTATION  
 HIGHWAYS DIVISION

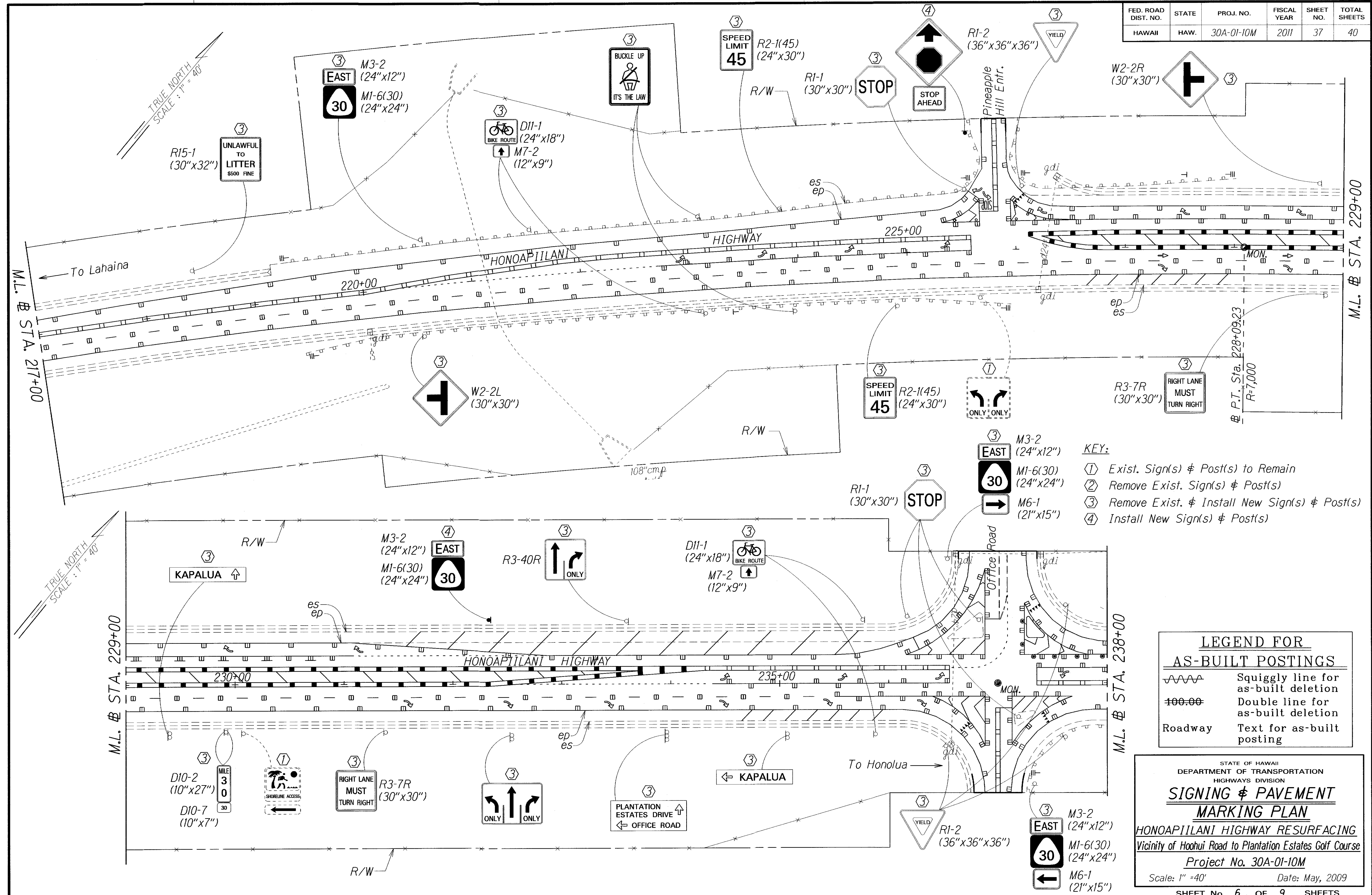
**SIGNING & PAVEMENT MARKING PLAN**

**HONOAPIILANI HIGHWAY RESURFACING**  
 Vicinity of Hooiui Road to Plantation Estates Golf Course

Project No. 30A-01-10M  
 Scale: 1" = 40' Date: May, 2009

SHEET No. 5 OF 9 SHEETS

FED. ROAD DIST. NO.	STATE	PROJ. NO.	FISCAL YEAR	SHEET NO.	TOTAL SHEETS
HAWAII	HAW.	30A-01-10M	2011	37	40



- KEY:**
- ① Exist. Sign(s) & Post(s) to Remain
  - ② Remove Exist. Sign(s) & Post(s)
  - ③ Remove Exist. & Install New Sign(s) & Post(s)
  - ④ Install New Sign(s) & Post(s)

**LEGEND FOR AS-BUILT POSTINGS**

	Squiggly line for as-built deletion
	Double line for as-built deletion
Roadway	Text for as-built posting

STATE OF HAWAII  
DEPARTMENT OF TRANSPORTATION  
HIGHWAYS DIVISION

**SIGNING & PAVEMENT MARKING PLAN**

HONOAPIILANI HIGHWAY RESURFACING  
Vicinity of Hoohei Road to Plantation Estates Golf Course  
Project No. 30A-01-10M

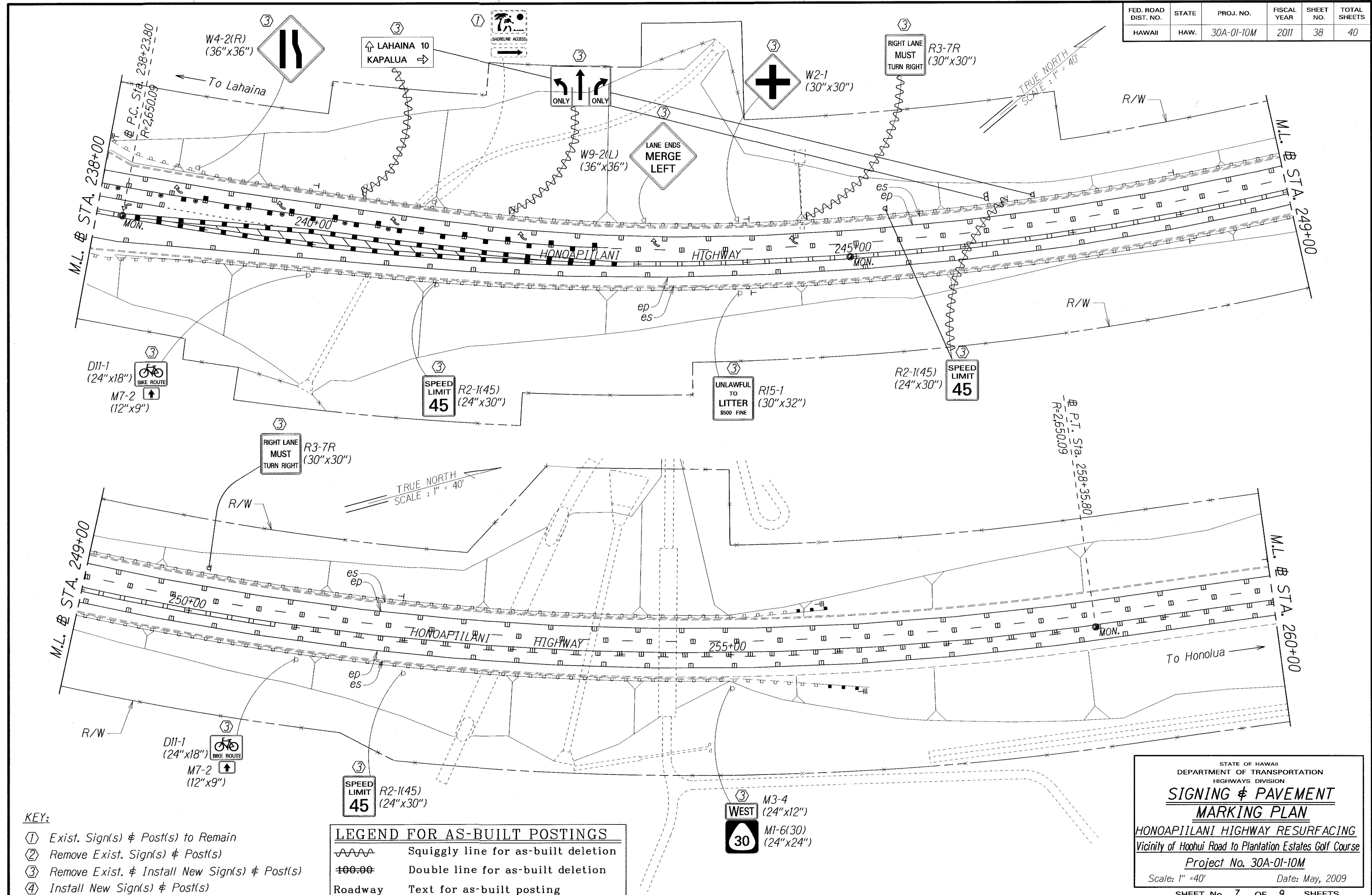
Scale: 1" = 40' Date: May, 2009

SHEET No. 6 OF 9 SHEETS

ORIGINAL PLAN	DATE
SURVEY PLOTTED BY	
DESIGNED BY	
QUANTITIES BY	
CHECKED BY	

"AS-BUILT"

FED. ROAD DIST. NO.	STATE	PROJ. NO.	FISCAL YEAR	SHEET NO.	TOTAL SHEETS
HAWAII	HAW.	30A-01-10M	2011	38	40



SURVEY PLOTTED BY	DATE
DESIGNED BY	
QUANTITIES BY	
CHECKED BY	

- KEY:**
- ① Exist. Sign(s) & Post(s) to Remain
  - ② Remove Exist. Sign(s) & Post(s)
  - ③ Remove Exist. & Install New Sign(s) & Post(s)
  - ④ Install New Sign(s) & Post(s)

LEGEND FOR AS-BUILT POSTINGS	
	Squiggly line for as-built deletion
	Double line for as-built deletion
Roadway	Text for as-built posting

STATE OF HAWAII  
DEPARTMENT OF TRANSPORTATION  
HIGHWAYS DIVISION

**SIGNING & PAVEMENT  
MARKING PLAN**

**HONOAPIILANI HIGHWAY RESURFACING**  
Vicinity of Hoohei Road to Plantation Estates Golf Course  
Project No. 30A-01-10M

Scale: 1" = 40'      Date: May, 2009

SHEET No. 7 OF 9 SHEETS

"AS-BUILT"



