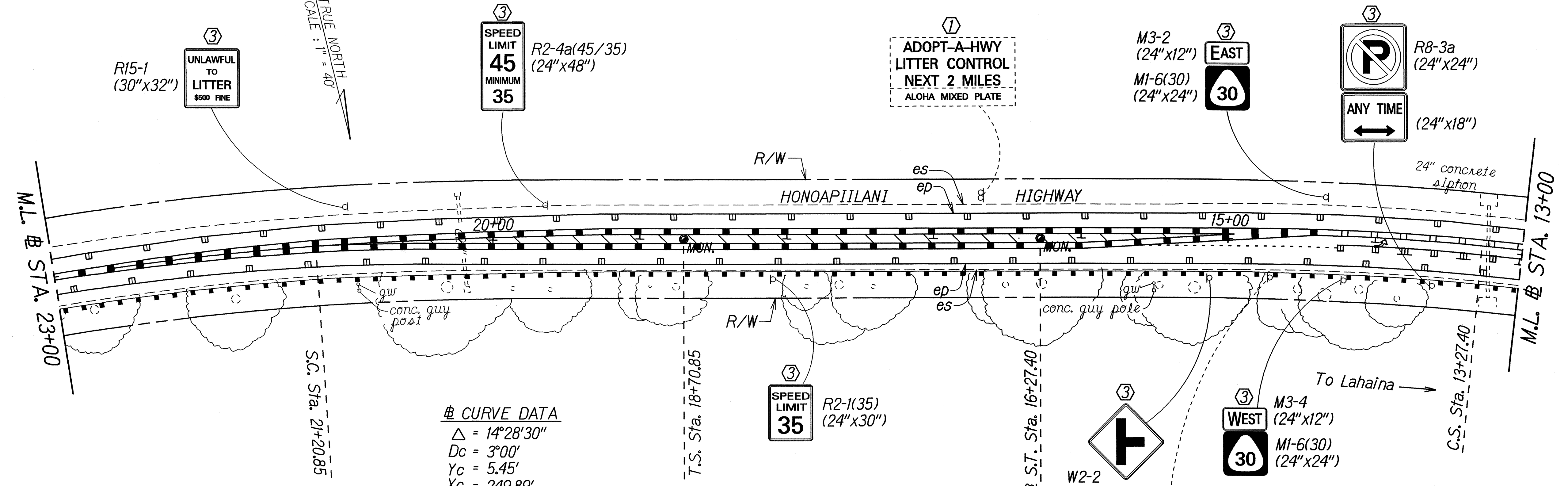
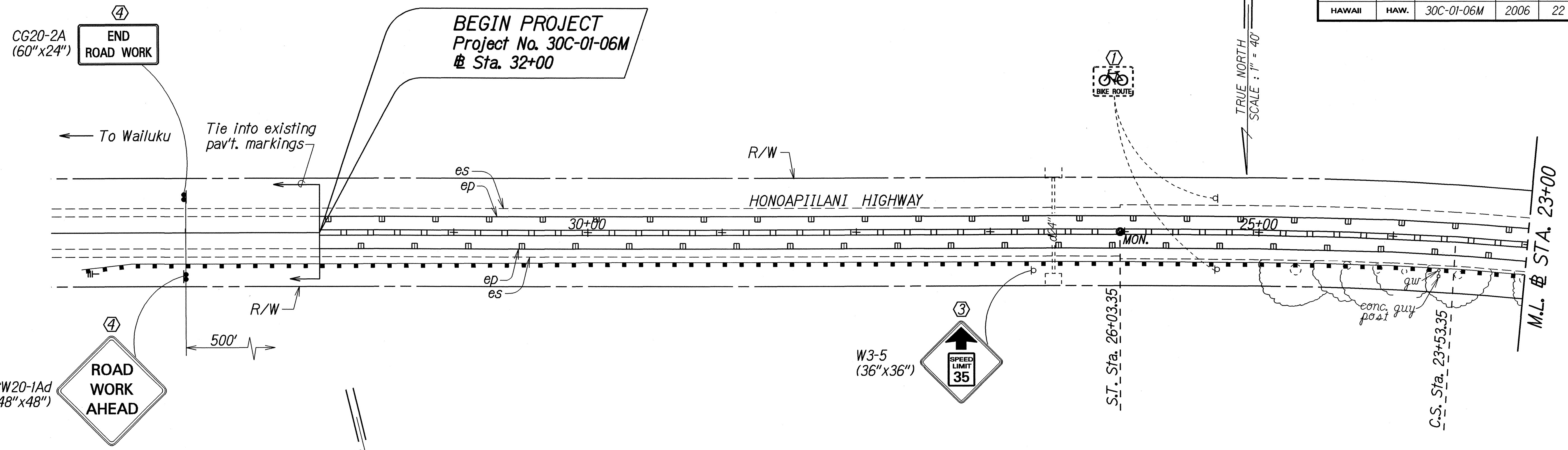


FED. ROAD DIST. NO.	STATE	PROJ. NO.	FISCAL YEAR	SHEET NO.	TOTAL SHEETS
HAWAII	HAW.	30C-01-06M	2006	22	38



CURVE DATA
 $\Delta = 14^\circ 28' 30''$
 $Dc = 3' 00''$
 $Yc = 5.45'$
 $Xc = 249.89'$
 $Ts = 367.70'$
 $Ls = 250.00'$
 $L.T. = 166.70'$
 $\theta s = 3^\circ 45' 00''$
 $S.E. = 0.07 \text{ ft/ft}$

- KEY:**
- ① Exist. Sign(s) & Post(s) to Remain
 - ② Remove Exist. Sign(s) & Post(s)
 - ③ Remove Exist. & Install New Sign(s) & Post(s)
 - ④ Install New Sign(s) & Post(s)
 - ⑤ Remove Existing Sign(s) & Install New Sign(s) at New Location

DESIGNED BY	DATE
CHECKED BY	12/05
QUANTITIES BY	
PLANNED BY	
ORIGINAL PLAN	

STATE OF HAWAII
DEPARTMENT OF TRANSPORTATION
HIGHWAYS DIVISION

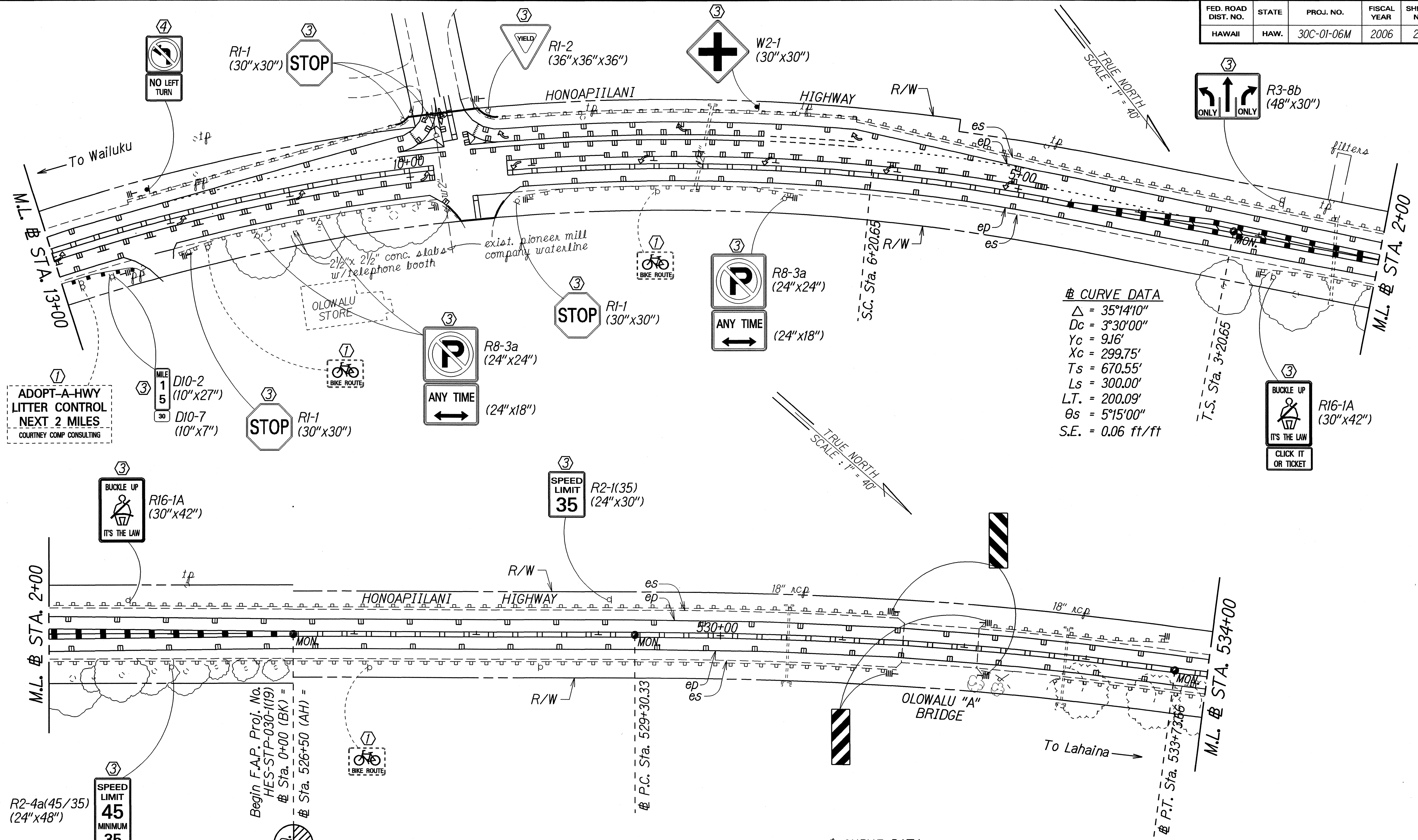
SIGNING & PAVEMENT MARKING PLAN

HONOAPIILANI HIGHWAY RESURFACING
Olowalu to Puamana
Project No. 30C-01-06M

Scale: 1" = 40' Date: December, 2005

SHEET No. 1 OF 12 SHEETS

FED. ROAD DIST. NO.	STATE	PROJ. NO.	FISCAL YEAR	SHEET NO.	TOTAL SHEETS
HAWAII	HAW.	30C-01-06M	2006	23	38



③ CURVE DATA
 $\Delta = 35^{\circ}14'10''$
 $D_c = 3^{\circ}30'00''$
 $Y_c = 9.16'$
 $X_c = 299.75'$
 $T_s = 670.55'$
 $L_s = 300.00'$
 $LT = 200.09'$
 $\theta_s = 5^{\circ}15'00''$
 $S.E. = 0.06 \text{ ft/ft}$

③ CURVE DATA
 $\Delta = 7^{\circ}23'20''$
 $D = 1^{\circ}40'00''$
 $R = 3437.75'$
 $T = 221.97'$
 $C = 443.03'$
 $L_c = 443.33'$

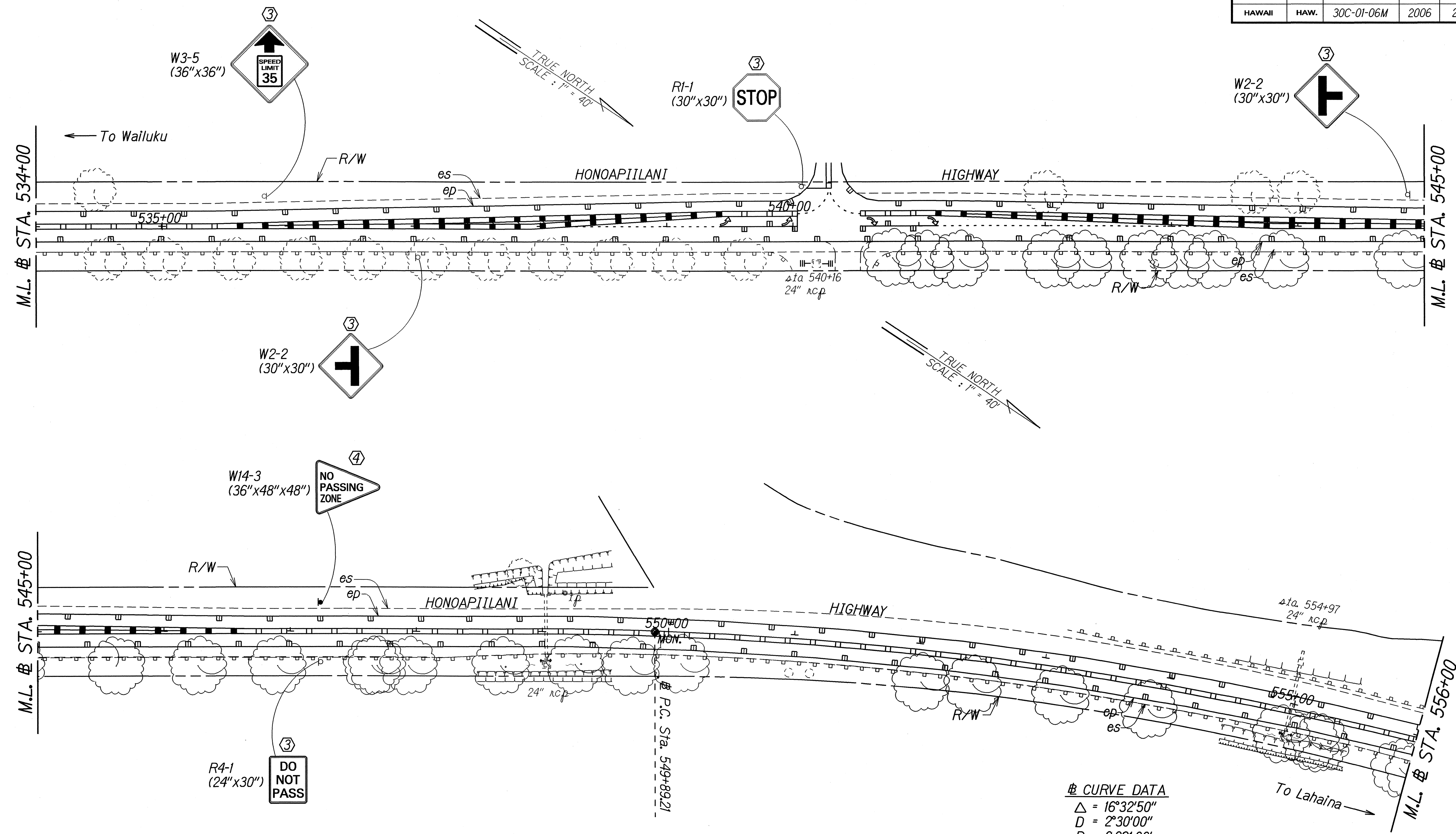
- KEY:**
- ① Exist. Sign(s) & Post(s) to Remain
 - ② Remove Exist. Sign(s) & Post(s)
 - ③ Remove Exist. & Install New Sign(s) & Post(s)
 - ④ Install New Sign(s) & Post(s)
 - ⑤ Remove Existing Sign(s) & Install New Sign(s) at New Location

DESIGNED BY	DATE
DRAWN BY	12/05
NOTE BOOK	
QUANTITIES BY	
CHECKED BY	

Begin F.A.P. Proj. No. HES-STP-030-1(19)
 @ Sta. 0+00 (BK) =
 @ Sta. 526+50 (AH) =

STATE OF HAWAII
 DEPARTMENT OF TRANSPORTATION
 HIGHWAYS DIVISION
SIGNING & PAVEMENT MARKING PLAN
 HONOAPIILANI HIGHWAY RESURFACING
 Olowalu to Puamana
 Project No. 30C-01-06M
 Scale: 1" = 40' Date: December, 2005
 SHEET No. 2 OF 12 SHEETS

FED. ROAD DIST. NO.	STATE	PROJ. NO.	FISCAL YEAR	SHEET NO.	TOTAL SHEETS
HAWAII	HAW.	30C-01-06M	2006	24	38



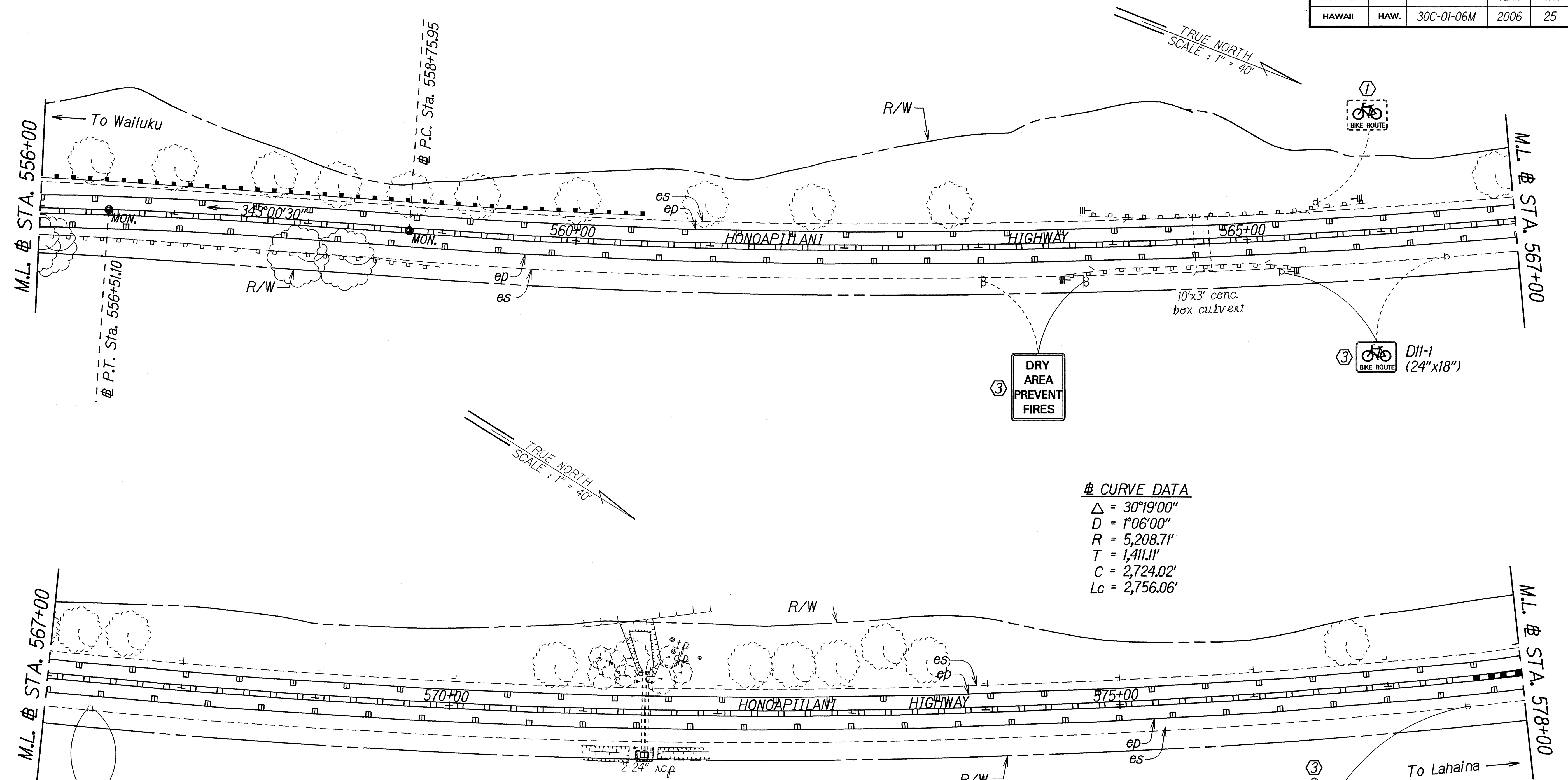
☉ CURVE DATA
 $\Delta = 16^{\circ}32'50''$
 $D = 2^{\circ}30'00''$
 $R = 2,291.83'$
 $T = 333.26'$
 $C = 659.59'$
 $Lc = 661.89'$

- KEY:**
- ① Exist. Sign(s) & Post(s) to Remain
 - ② Remove Exist. Sign(s) & Post(s)
 - ③ Remove Exist. & Install New Sign(s) & Post(s)
 - ④ Install New Sign(s) & Post(s)
 - ⑤ Remove Existing Sign(s) & Install New Sign(s) at New Location

SURVEY PLOTTED BY	DATE
DESIGNED BY	
TRACED BY	
NOTE BOOK	
DESIGNED BY	
QUANTITIES BY	
CHECKED BY	

STATE OF HAWAII
DEPARTMENT OF TRANSPORTATION
HIGHWAYS DIVISION
SIGNING & PAVEMENT
MARKING PLAN
HONOAPIILANI HIGHWAY RESURFACING
Olowalu to Puamana
Project No. 30C-01-06M
Scale: 1" = 40' Date: December, 2005
SHEET No. 3 OF 12 SHEETS

FED. ROAD DIST. NO.	STATE	PROJ. NO.	FISCAL YEAR	SHEET NO.	TOTAL SHEETS
HAWAII	HAW.	30C-01-06M	2006	25	38



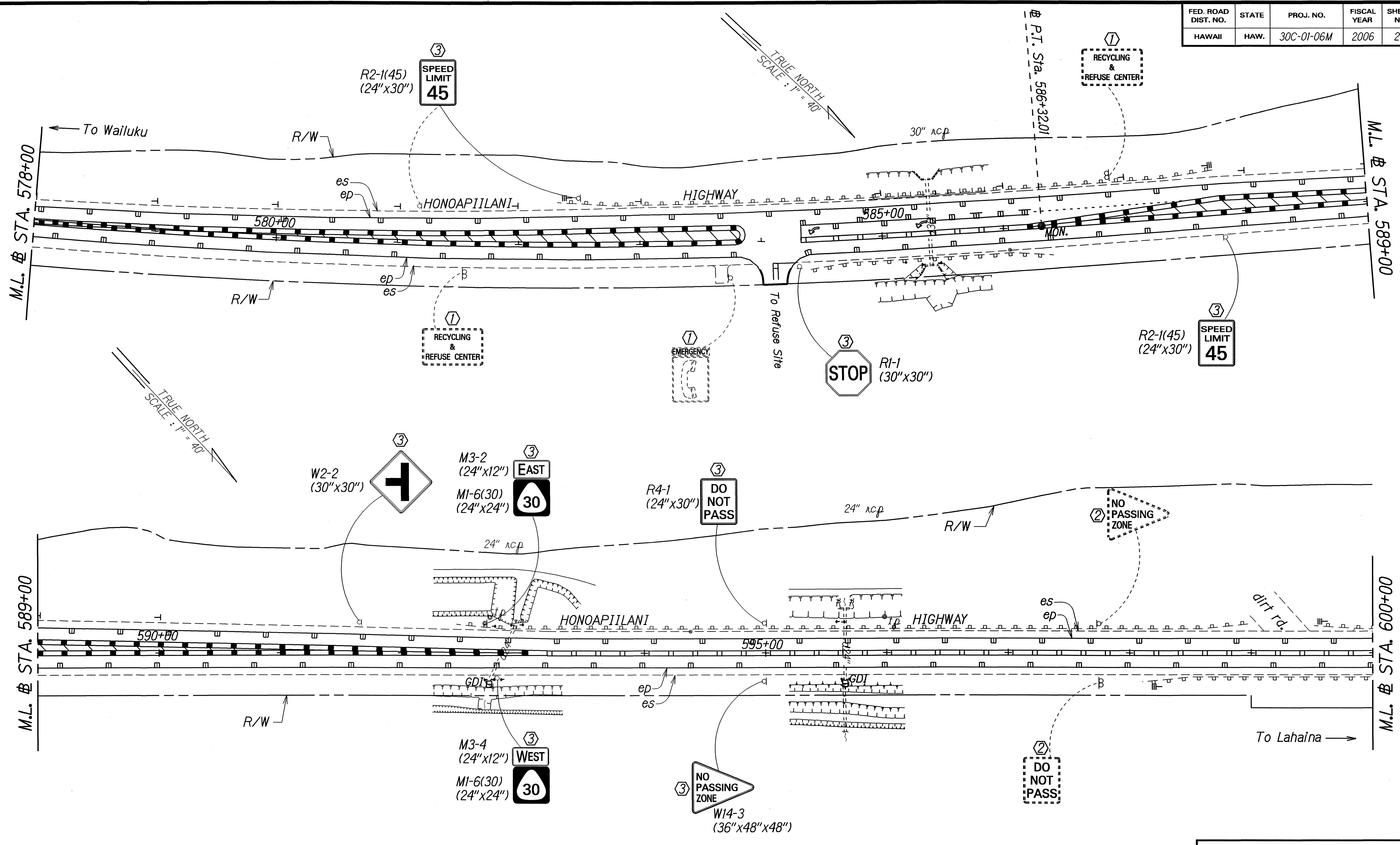
☼ CURVE DATA
 $\Delta = 30^{\circ}19'00''$
 $D = 1^{\circ}06'00''$
 $R = 5,208.71'$
 $T = 1,411.11'$
 $C = 2,724.02'$
 $Lc = 2,756.06'$

- KEY:**
- ① Exist. Sign(s) & Post(s) to Remain
 - ② Remove Exist. Sign(s) & Post(s)
 - ③ Remove Exist. & Install New Sign(s) & Post(s)
 - ④ Install New Sign(s) & Post(s)
 - ⑤ Remove Existing Sign(s) & Install New Sign(s) at New Location

DESIGNED BY	DATE
DRAWN BY	12/05
TRACED BY	
NOTE BOOK	
QUANTITIES BY	
CHECKED BY	

STATE OF HAWAII
DEPARTMENT OF TRANSPORTATION
HIGHWAYS DIVISION
SIGNING & PAVEMENT
MARKING PLAN
HONOAPIILANI HIGHWAY RESURFACING
Olowalu to Puamana
Project No. 30C-01-06M
Scale: 1" = 40' Date: December, 2005
SHEET No. 4 OF 12 SHEETS

FED. ROAD DIST. NO.	STATE	PROJ. NO.	FISCAL YEAR	SHEET NO.	TOTAL SHEETS
HAWAII	HAW.	30C-01-06M	2006	26	38



DESIGNED BY	DATE
DRAWN BY	12/05
TRACED BY	
NOTED BY	
QUANTITIES BY	
CHECKED BY	

- KEY:**
- ① Exist. Sign(s) & Post(s) to Remain
 - ② Remove Exist. Sign(s) & Post(s)
 - ③ Remove Exist. & Install New Sign(s) & Post(s)
 - ④ Install New Sign(s) & Post(s)
 - ⑤ Remove Existing Sign(s) & Install New Sign(s) at New Location

STATE OF HAWAII
DEPARTMENT OF TRANSPORTATION
HIGHWAYS DIVISION

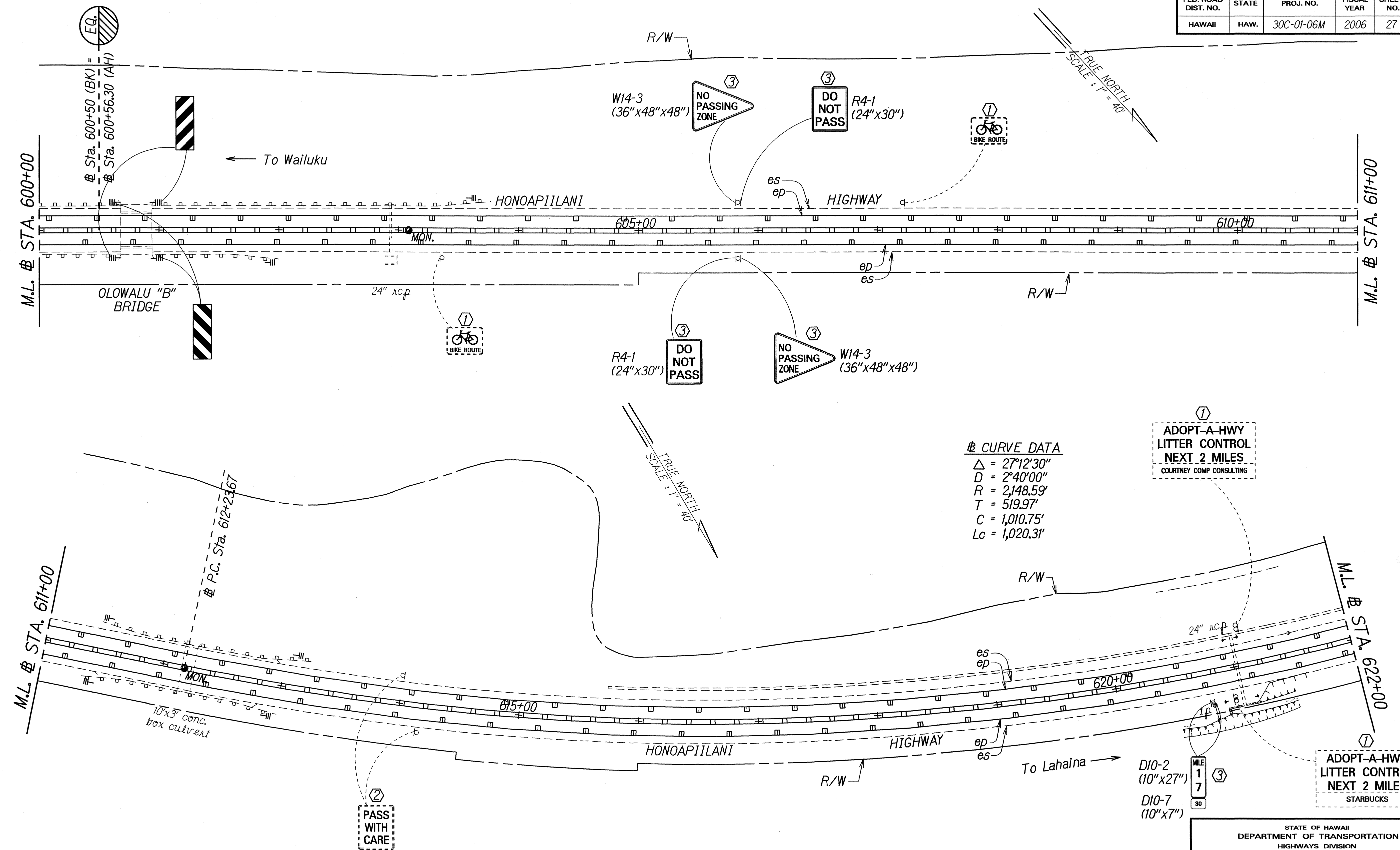
**SIGNING & PAVEMENT
MARKING PLAN**

HONOAPIILANI HIGHWAY RESURFACING
Olowalu to Puamana
Project No. 30C-01-06M

Scale: 1" = 40' Date: December, 2005

SHEET No. 5 OF 12 SHEETS

FED. ROAD DIST. NO.	STATE	PROJ. NO.	FISCAL YEAR	SHEET NO.	TOTAL SHEETS
HAWAII	HAW.	30C-01-06M	2006	27	38



① CURVE DATA

Δ	= 27°12'30"
D	= 2°40'00"
R	= 2,148.59'
T	= 519.97'
C	= 1,010.75'
Lc	= 1,020.31'

① ADOPT-A-HWY
LITTER CONTROL
NEXT 2 MILES
COURTNEY COMP CONSULTING

① ADOPT-A-HWY
LITTER CONTROL
NEXT 2 MILES
STARBUCKS

ORIGINAL PLAN	DATE
DESIGNED BY	12/05
TRACED BY	
NOTED BY	
QUANTITIES BY	
CHECKED BY	

- KEY:**
- ① Exist. Sign(s) & Post(s) to Remain
 - ② Remove Exist. Sign(s) & Post(s)
 - ③ Remove Exist. & Install New Sign(s) & Post(s)
 - ④ Install New Sign(s) & Post(s)
 - ⑤ Remove Existing Sign(s) & Install New Sign(s) at New Location

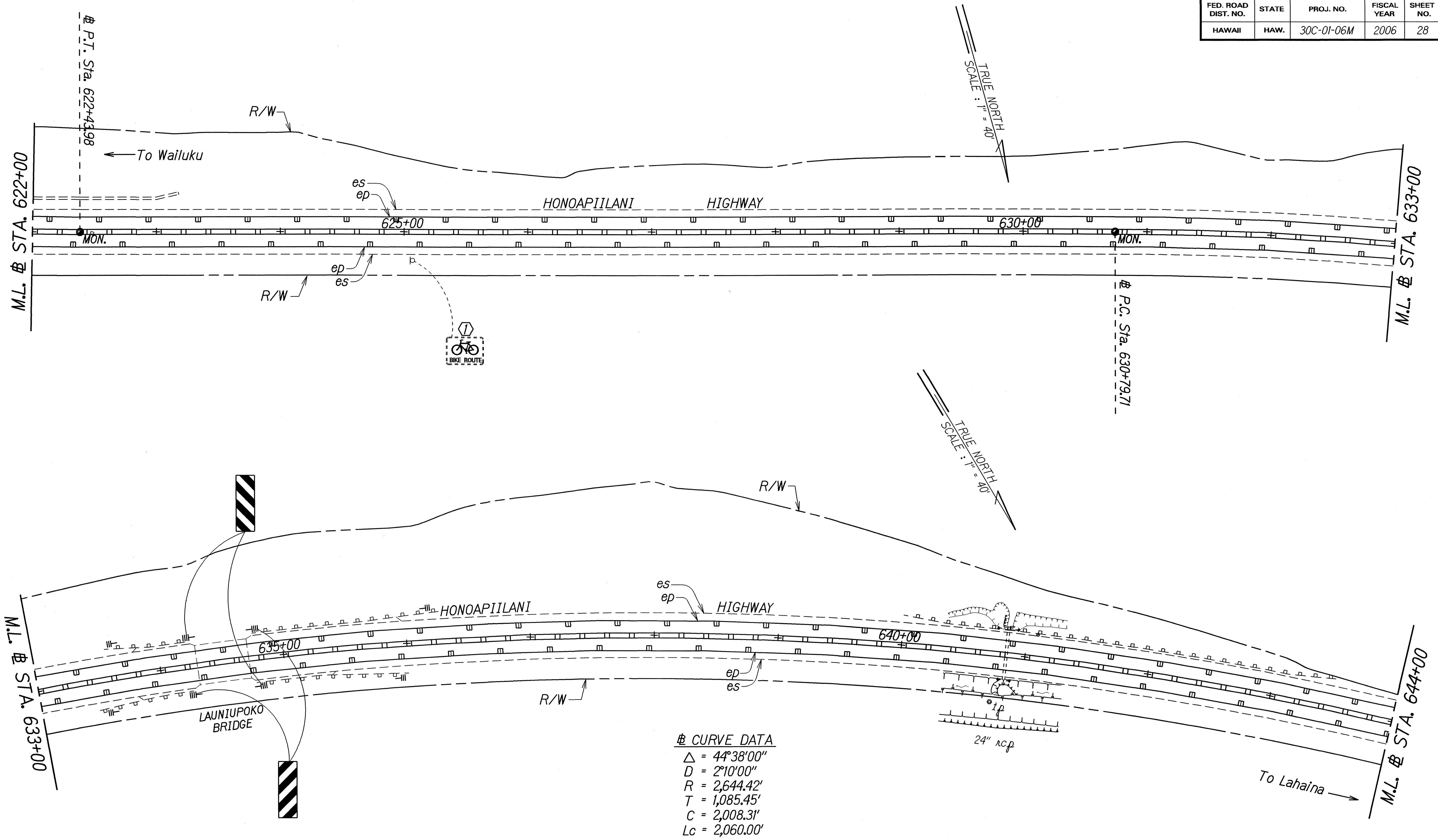
STATE OF HAWAII
DEPARTMENT OF TRANSPORTATION
HIGHWAYS DIVISION

SIGNING & PAVEMENT MARKING PLAN

HONOAPIILANI HIGHWAY RESURFACING
Olowalu to Puamana
Project No. 30C-01-06M
Scale: 1" = 40' Date: December, 2005

SHEET No. 6 OF 12 SHEETS

FED. ROAD DIST. NO.	STATE	PROJ. NO.	FISCAL YEAR	SHEET NO.	TOTAL SHEETS
HAWAII	HAW.	30C-01-06M	2006	28	38



⊕ CURVE DATA
 $\Delta = 44^{\circ}38'00''$
 $D = 2^{\circ}10'00''$
 $R = 2,644.42'$
 $T = 1,085.45'$
 $C = 2,008.31'$
 $Lc = 2,060.00'$

- KEY:**
- ① Exist. Sign(s) ⊕ Post(s) to Remain
 - ② Remove Exist. Sign(s) ⊕ Post(s)
 - ③ Remove Exist. ⊕ Install New Sign(s) ⊕ Post(s)
 - ④ Install New Sign(s) ⊕ Post(s)
 - ⑤ Remove Existing Sign(s) ⊕ Install New Sign(s) at New Location

SURVEY PLOTTED BY	DATE
DESIGNED BY	12/05
TRACED BY	
NOTE BOOK	
QUANTITIES BY	
CHECKED BY	

STATE OF HAWAII
DEPARTMENT OF TRANSPORTATION
HIGHWAYS DIVISION

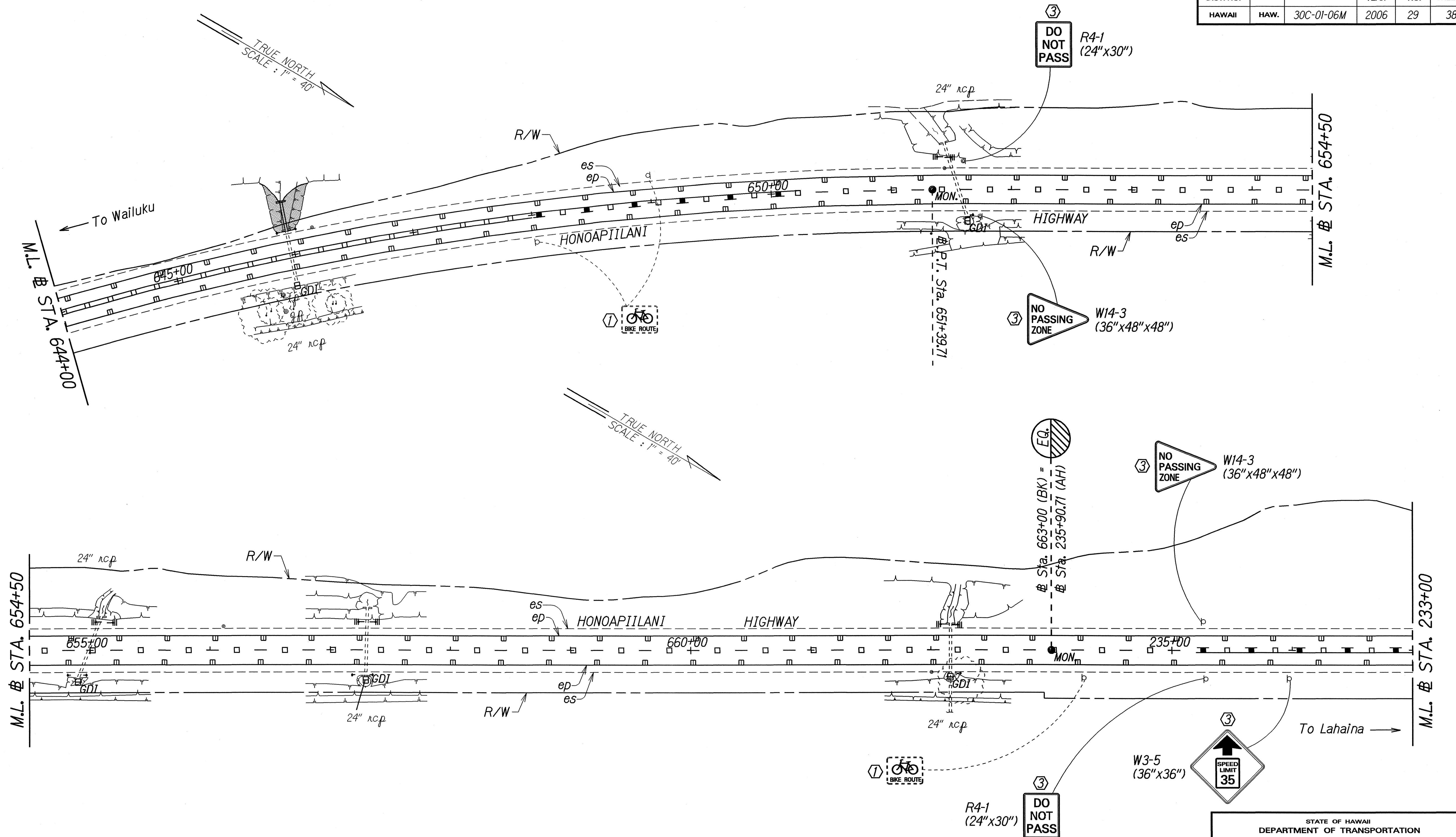
**SIGNING & PAVEMENT
MARKING PLAN**

HONOAPIILANI HIGHWAY RESURFACING
Olowalu to Puamana
Project No. 30C-01-06M

Scale: 1" = 40' Date: December, 2005

SHEET No. 7 OF 12 SHEETS

FED. ROAD DIST. NO.	STATE	PROJ. NO.	FISCAL YEAR	SHEET NO.	TOTAL SHEETS
HAWAII	HAW.	30C-01-06M	2006	29	38



- KEY:**
- ① Exist. Sign(s) & Post(s) to Remain
 - ② Remove Exist. Sign(s) & Post(s)
 - ③ Remove Exist. & Install New Sign(s) & Post(s)
 - ④ Install New Sign(s) & Post(s)
 - ⑤ Remove Existing Sign(s) & Install New Sign(s) at New Location

DESIGNED BY	DATE
DRAWN BY	12/05
CHECKED BY	
QUANTITIES BY	
NOTED BY	
TRACED BY	
ORIGINAL PLAN	

STATE OF HAWAII
DEPARTMENT OF TRANSPORTATION
HIGHWAYS DIVISION

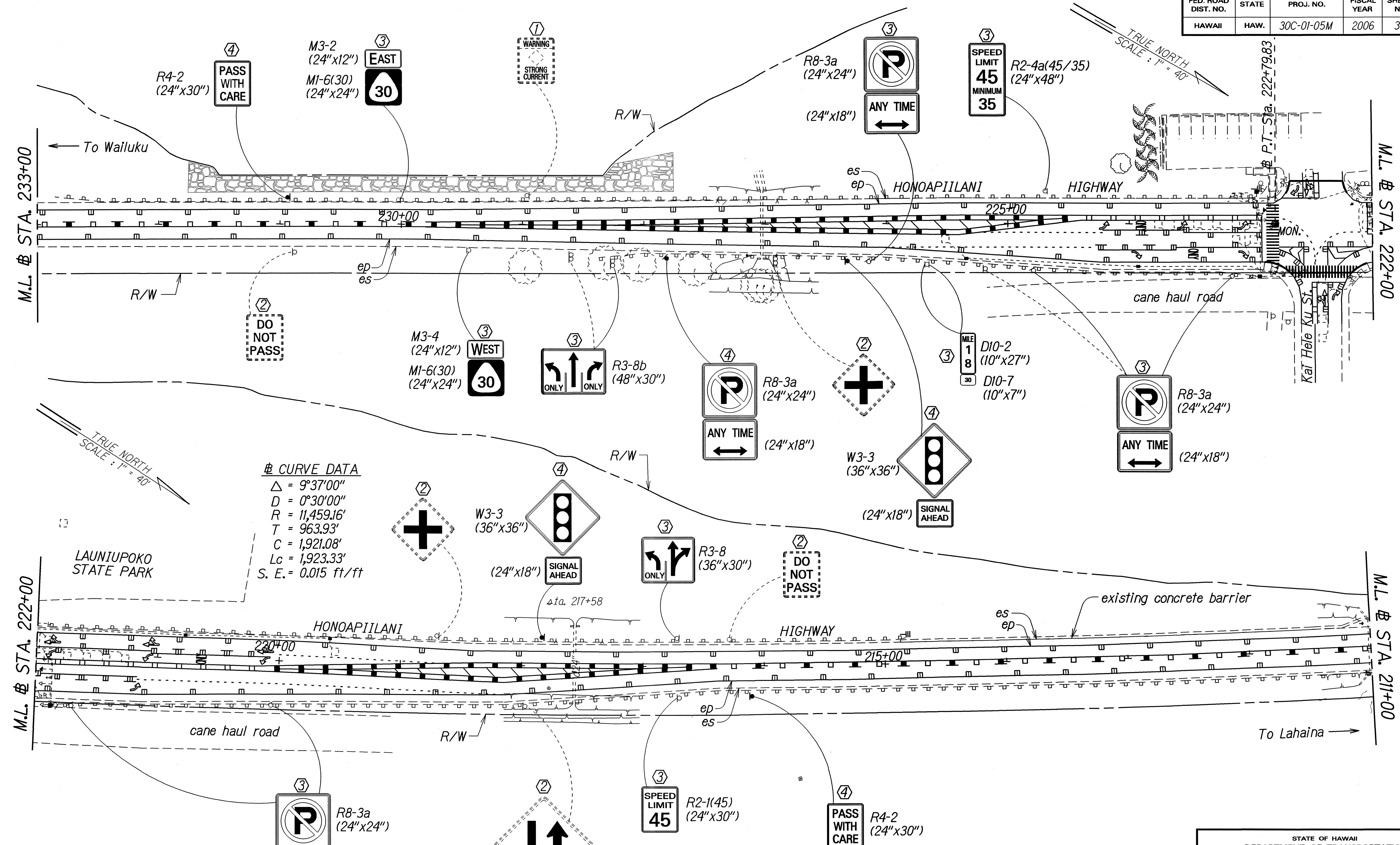
**SIGNING & PAVEMENT
MARKING PLAN**

HONOAPIILANI HIGHWAY RESURFACING
Olowalu to Puamana
Project No. 30C-01-06M

Scale: 1" = 40' Date: December, 2005

SHEET No. 8 OF 12 SHEETS

FED. ROAD DIST. NO.	STATE	PROJ. NO.	FISCAL YEAR	SHEET NO.	TOTAL SHEETS
HAWAII	HAW.	30C-01-05M	2006	30	38



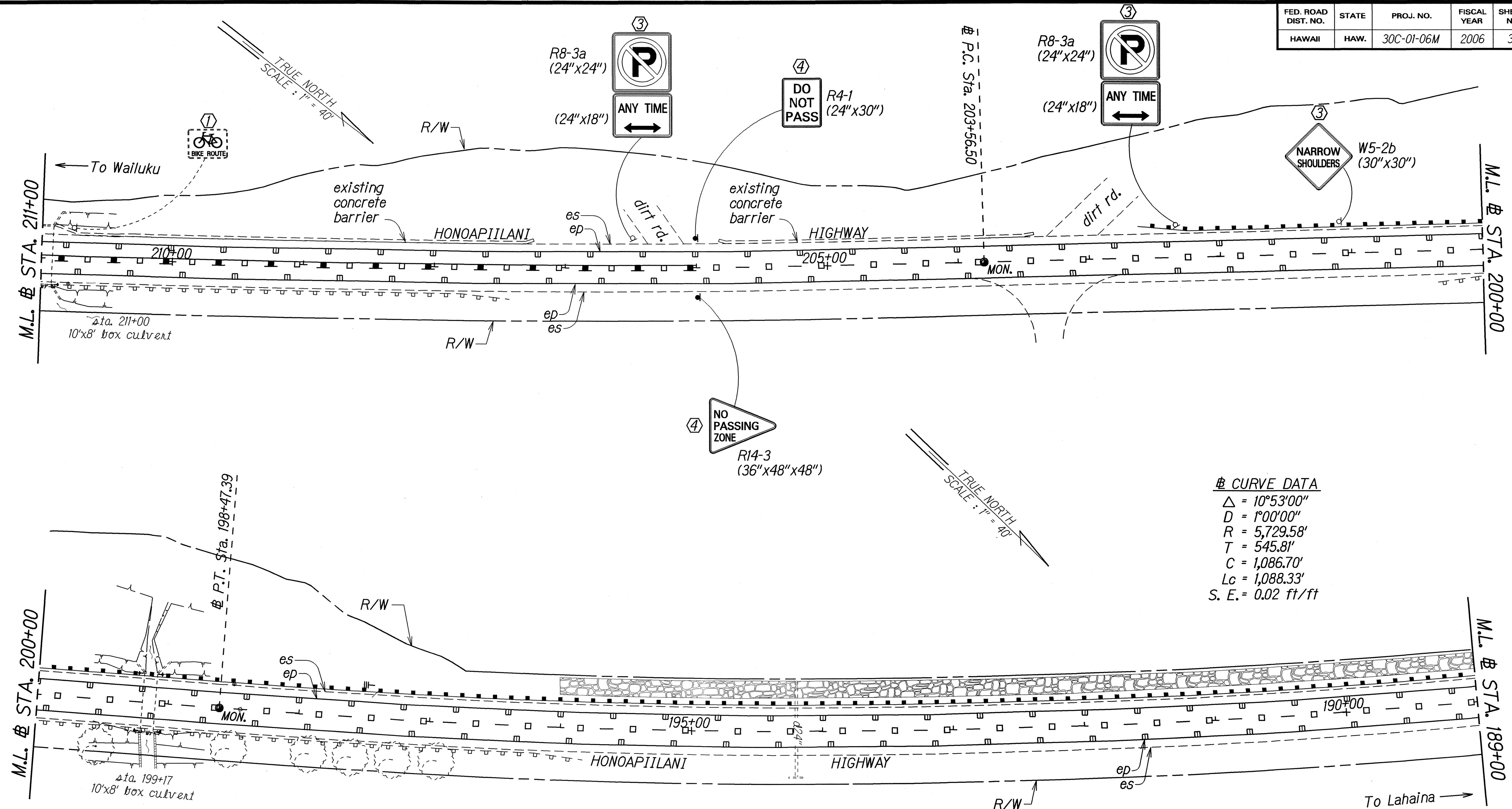
CURVE DATA
 $\Delta = 9^{\circ}37'00''$
 $D = 0^{\circ}30'00''$
 $R = 11,459.16'$
 $T = 963.93'$
 $C = 1,921.08'$
 $L_c = 1,923.33'$
 $S. E. = 0.015 \text{ ft/ft}$

- KEY:**
- ① Exist. Sign(s) & Post(s) to Remain
 - ② Remove Exist. Sign(s) & Post(s)
 - ③ Remove Exist. & Install New Sign(s) & Post(s)
 - ④ Install New Sign(s) & Post(s)
 - ⑤ Remove Existing Sign(s) & Install New Sign(s) at New Location

DESIGNED BY	DATE
DRAWN BY	12/05
CHECKED BY	
QUANTITIES BY	
NOTED BY	
ORIGINAL PLAN	

STATE OF HAWAII
DEPARTMENT OF TRANSPORTATION
HIGHWAYS DIVISION
SIGNING & PAVEMENT MARKING PLAN
HONOAPIILANI HIGHWAY RESURFACING
Olowalu to Puamana
Project No. 30C-01-06M
Scale: 1" = 40' Date: December, 2005
SHEET No. 9 OF 12 SHEETS

FED. ROAD DIST. NO.	STATE	PROJ. NO.	FISCAL YEAR	SHEET NO.	TOTAL SHEETS
HAWAII	HAW.	30C-01-06M	2006	31	38



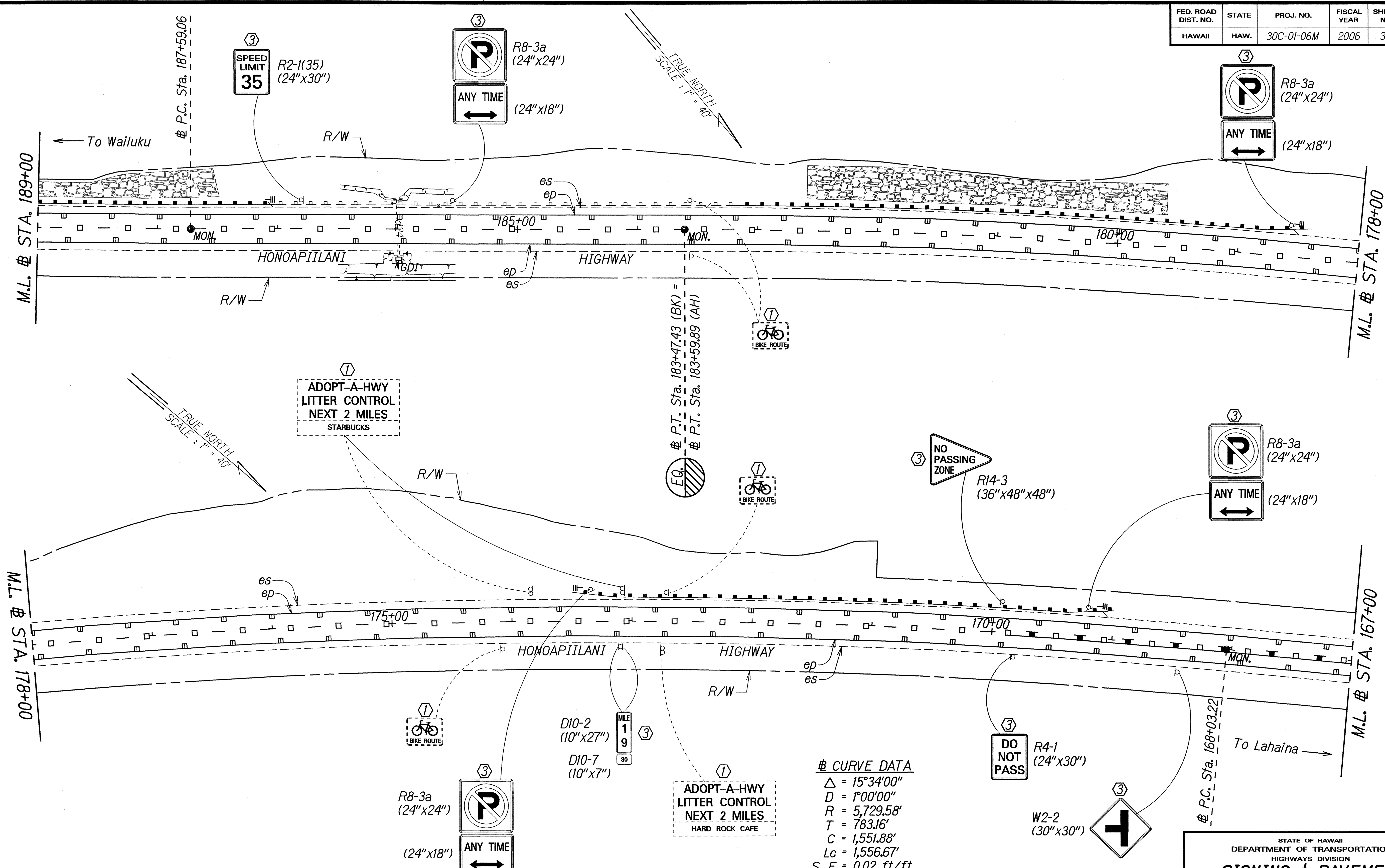
CURVE DATA
 $\Delta = 10^{\circ}53'00''$
 $D = 1^{\circ}00'00''$
 $R = 5,729.58'$
 $T = 545.81'$
 $C = 1,086.70'$
 $Lc = 1,088.33'$
 $S. E. = 0.02 \text{ ft/ft}$

ORIGINAL PLAN	DATE
DESIGNED BY	12/05
TRACED BY	
NOTED BY	
QUANTITIES BY	
CHECKED BY	

- KEY:**
- ① Exist. Sign(s) & Post(s) to Remain
 - ② Remove Exist. Sign(s) & Post(s)
 - ③ Remove Exist. & Install New Sign(s) & Post(s)
 - ④ Install New Sign(s) & Post(s)
 - ⑤ Remove Existing Sign(s) & Install New Sign(s) at New Location

STATE OF HAWAII
DEPARTMENT OF TRANSPORTATION
HIGHWAYS DIVISION
SIGNING & PAVEMENT
MARKING PLAN
HONOAPIILANI HIGHWAY RESURFACING
Olowalu to Puamana
Project No. 30C-01-06M
Scale: 1" = 40' Date: December, 2005
SHEET No. 10 OF 12 SHEETS

FED. ROAD DIST. NO.	STATE	PROJ. NO.	FISCAL YEAR	SHEET NO.	TOTAL SHEETS
HAWAII	HAW.	30C-01-06M	2006	32	38



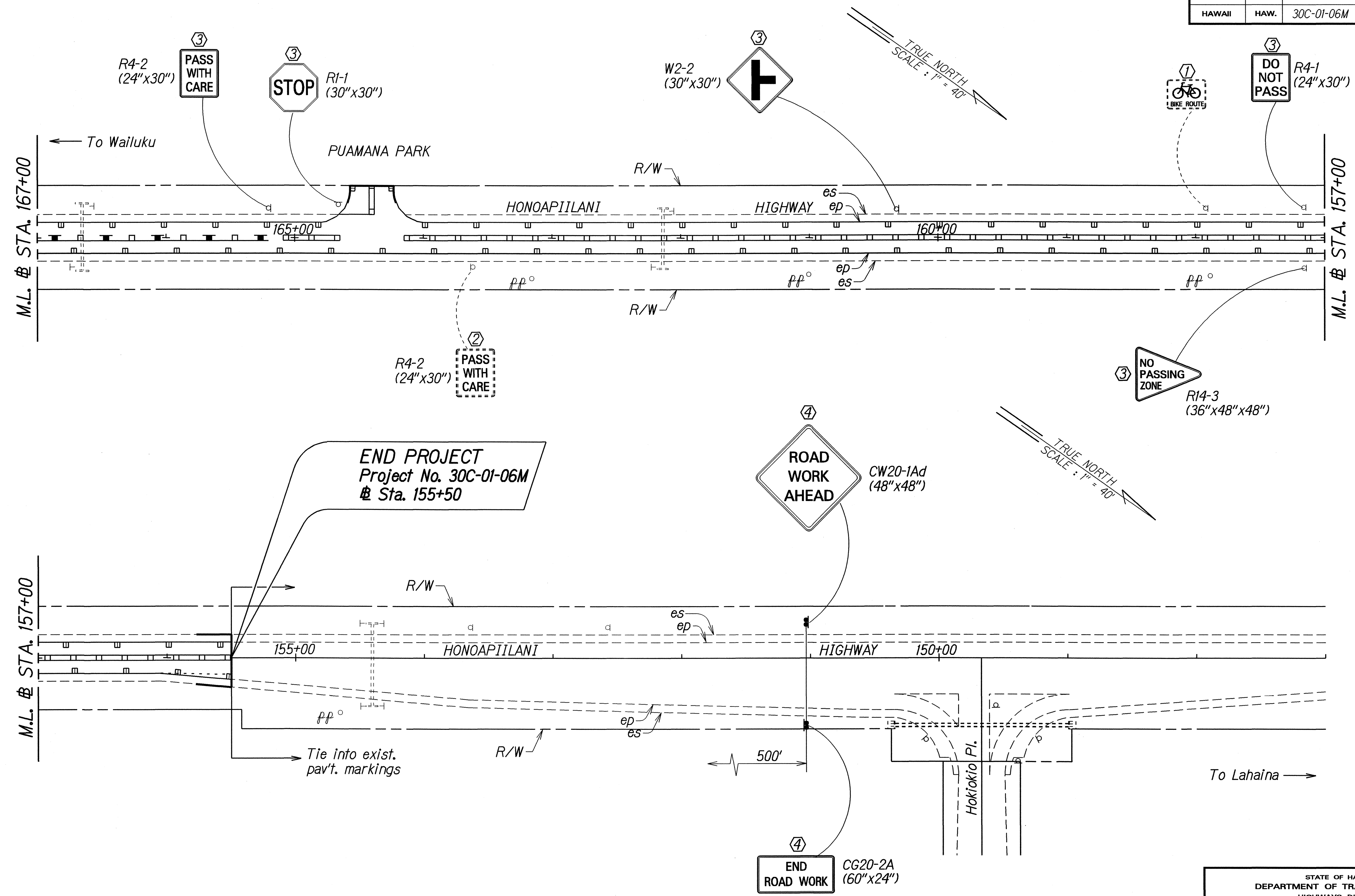
CURVE DATA
 $\Delta = 15^{\circ}34'00''$
 $D = 1^{\circ}00'00''$
 $R = 5,729.58'$
 $T = 783.16'$
 $C = 1,551.88'$
 $Lc = 1,556.67'$
 $S. E. = 0.02 \text{ ft/ft}$

- KEY:**
- ① Exist. Sign(s) & Post(s) to Remain
 - ② Remove Exist. Sign(s) & Post(s)
 - ③ Remove Exist. & Install New Sign(s) & Post(s)
 - ④ Install New Sign(s) & Post(s)
 - ⑤ Remove Existing Sign(s) & Install New Sign(s) at New Location

DESIGNED BY	DATE
DRAWN BY	12/05
TRACED BY	
NOTE BOOK	
QUANTITIES BY	
CHECKED BY	

STATE OF HAWAII
DEPARTMENT OF TRANSPORTATION
HIGHWAYS DIVISION
SIGNING & PAVEMENT MARKING PLAN
HONOAPIILANI HIGHWAY RESURFACING
Olowalu to Puamana
Project No. 30C-01-06M
Scale: 1" = 40' Date: December, 2005
SHEET No. 11 OF 12 SHEETS

FED. ROAD DIST. NO.	STATE	PROJ. NO.	FISCAL YEAR	SHEET NO.	TOTAL SHEETS
HAWAII	HAW.	30C-01-06M	2006	33	38



- KEY:**
- ① Exist. Sign(s) & Post(s) to Remain
 - ② Remove Exist. Sign(s) & Post(s)
 - ③ Remove Exist. & Install New Sign(s) & Post(s)
 - ④ Install New Sign(s) & Post(s)
 - ⑤ Remove Existing Sign(s) & Install New Sign(s) at New Location

DESIGNED BY	DATE
DRAWN BY	12/05
TRACED BY	
NOTE BOOK	
DESIGNED BY	
QUANTITIES BY	
CHECKED BY	

STATE OF HAWAII
DEPARTMENT OF TRANSPORTATION
HIGHWAYS DIVISION

**SIGNING & PAVEMENT
MARKING PLAN**

HONOAPIILANI HIGHWAY RESURFACING
Olowalu to Puamana
Project No. 30C-01-06M

Scale: 1" = 40' Date: December, 2005

SHEET No. 12 OF 12 SHEETS