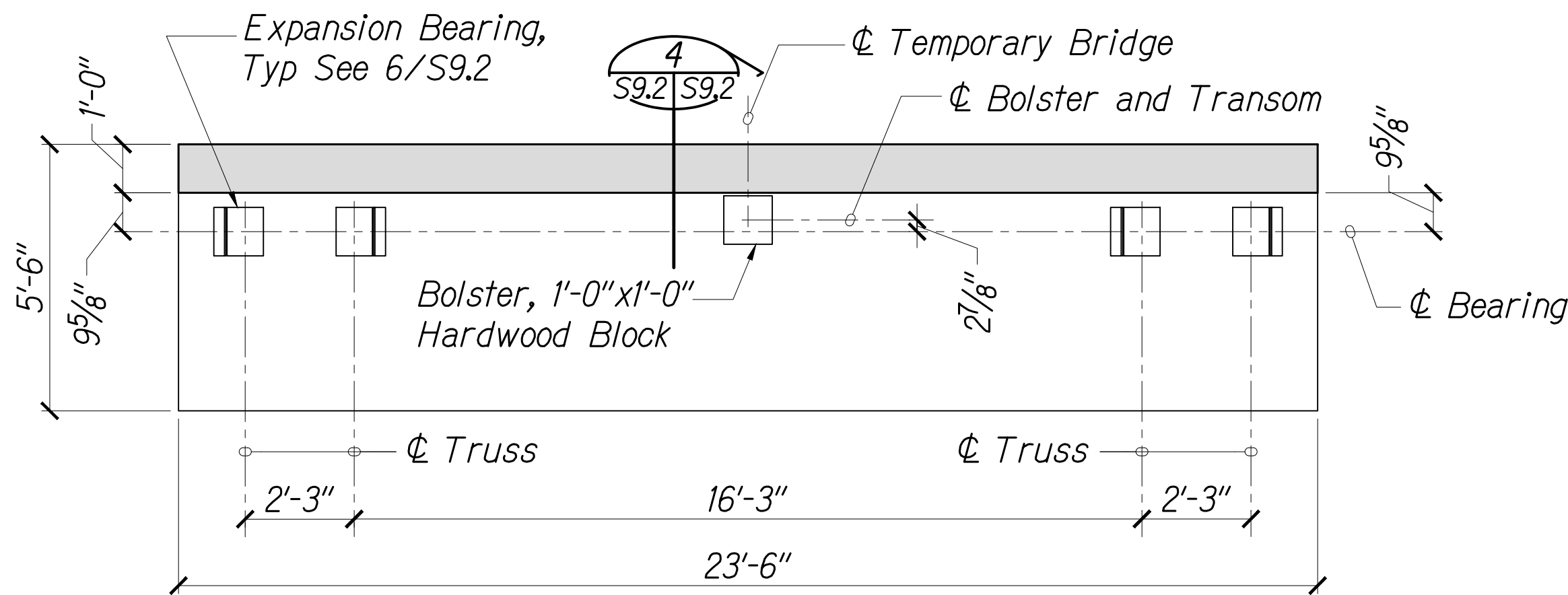


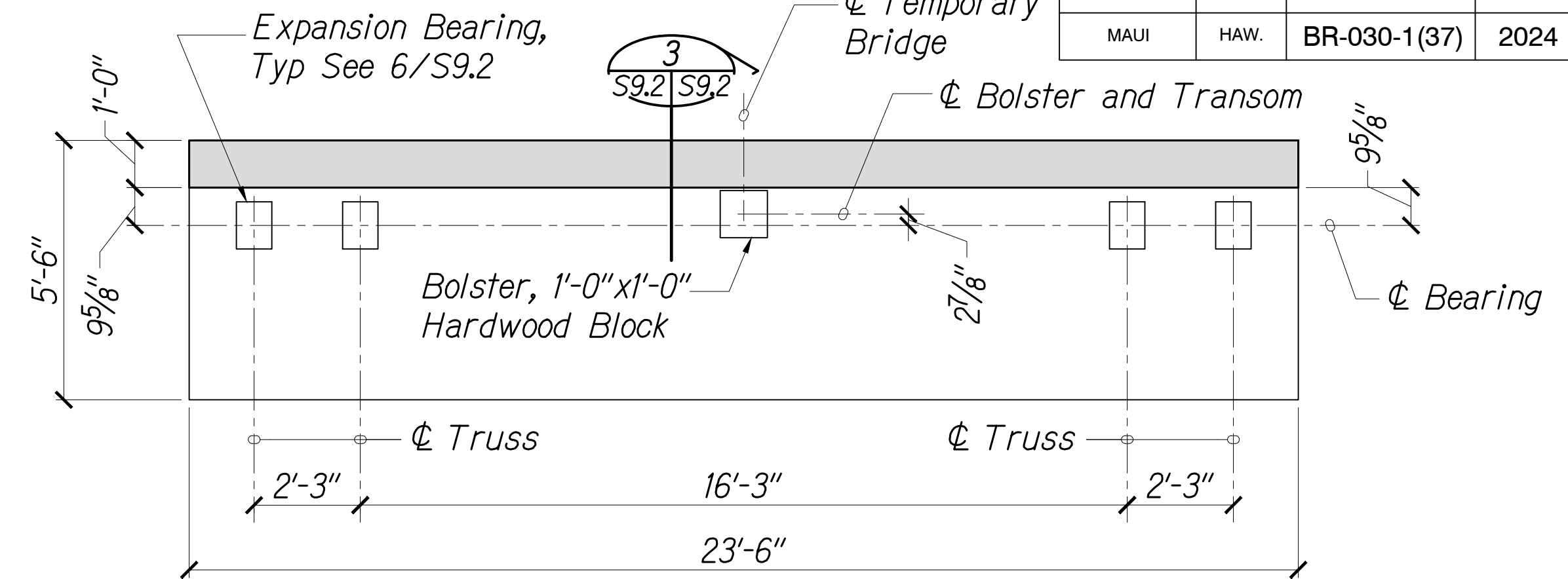
DIST. NO.	STATE	FED. AID PROJ. NO.	FISCAL YEAR	SHEET NO.	TOTAL SHEETS
MAUI	HAW.	BR-030-1(37)	2024	42	42



SOUTH ABUTMENT FOUNDATION PLAN - EXPANSION END

Scale: 3/8" = 1'-0"

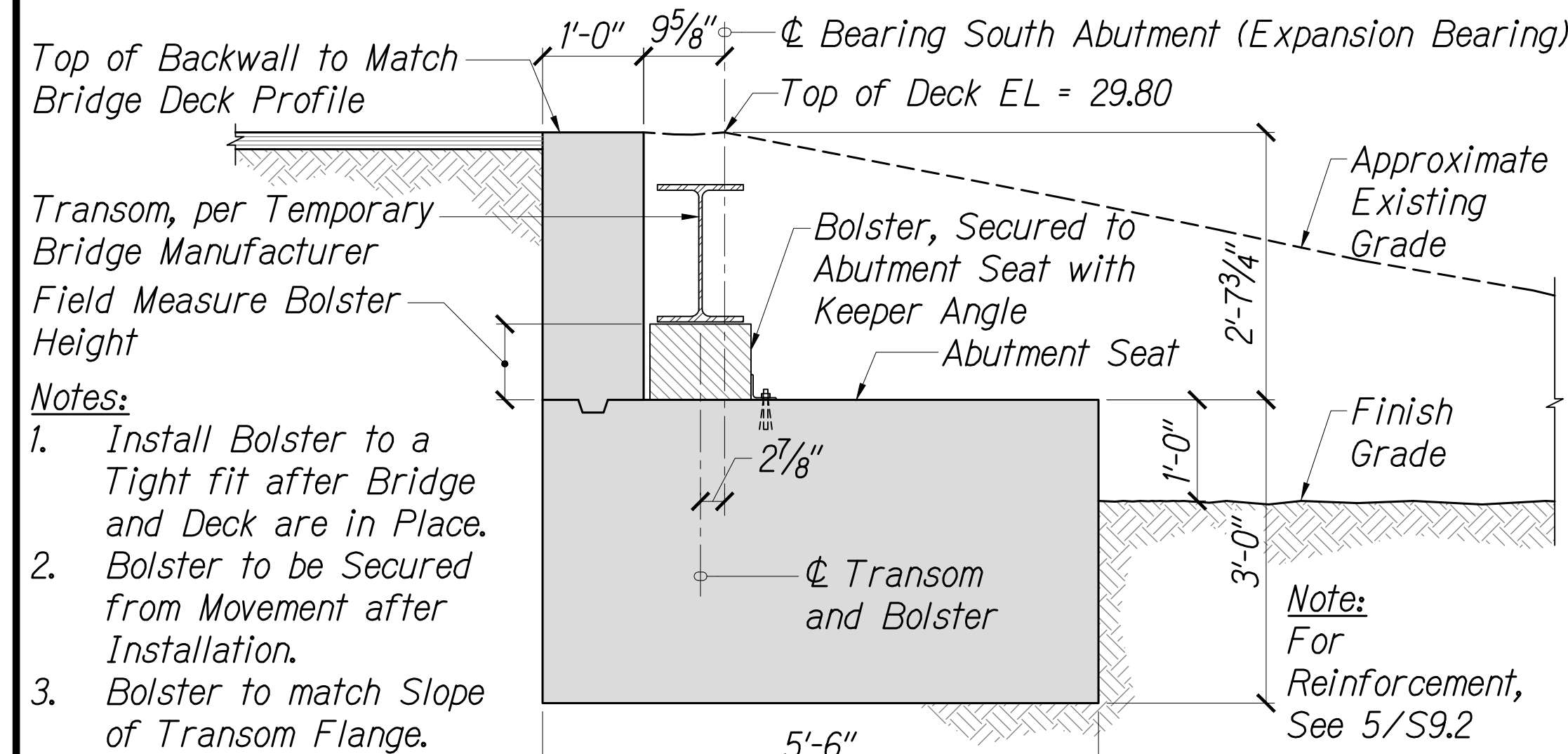
1
S9.2 S9.2



NORTH ABUTMENT FOUNDATION PLAN - FIXED END

Scale: 3/8" = 1'-0"

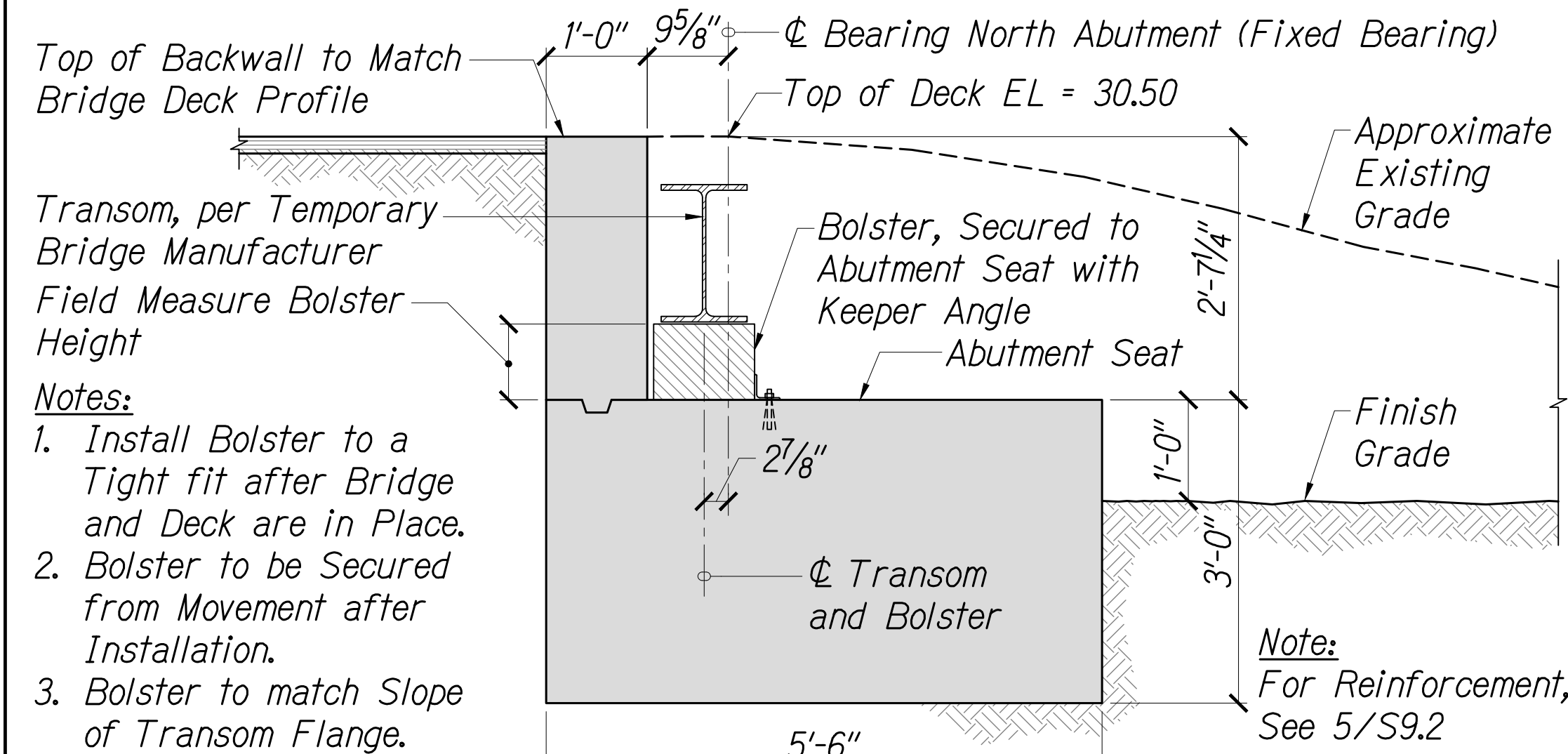
2
S9.2 S9.2



SOUTH ABUTMENT SECTION SHOWING DIMENSIONS

Scale: 3/4" = 1'-0"

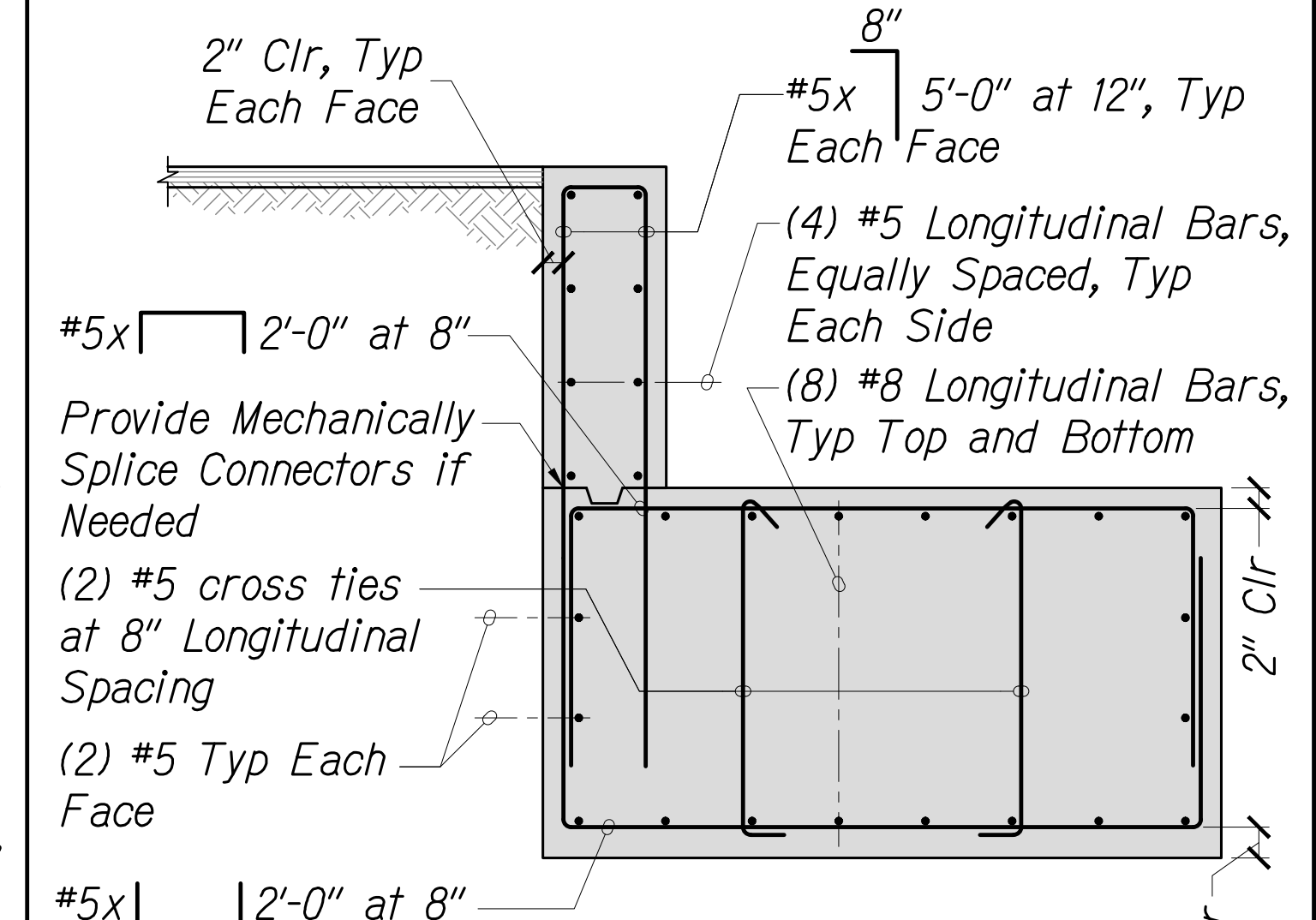
3
S9.2 S9.2



NORTH ABUTMENT SECTION SHOWING DIMENSIONS

Scale: 3/4" = 1'-0"

4
S9.2 S9.2



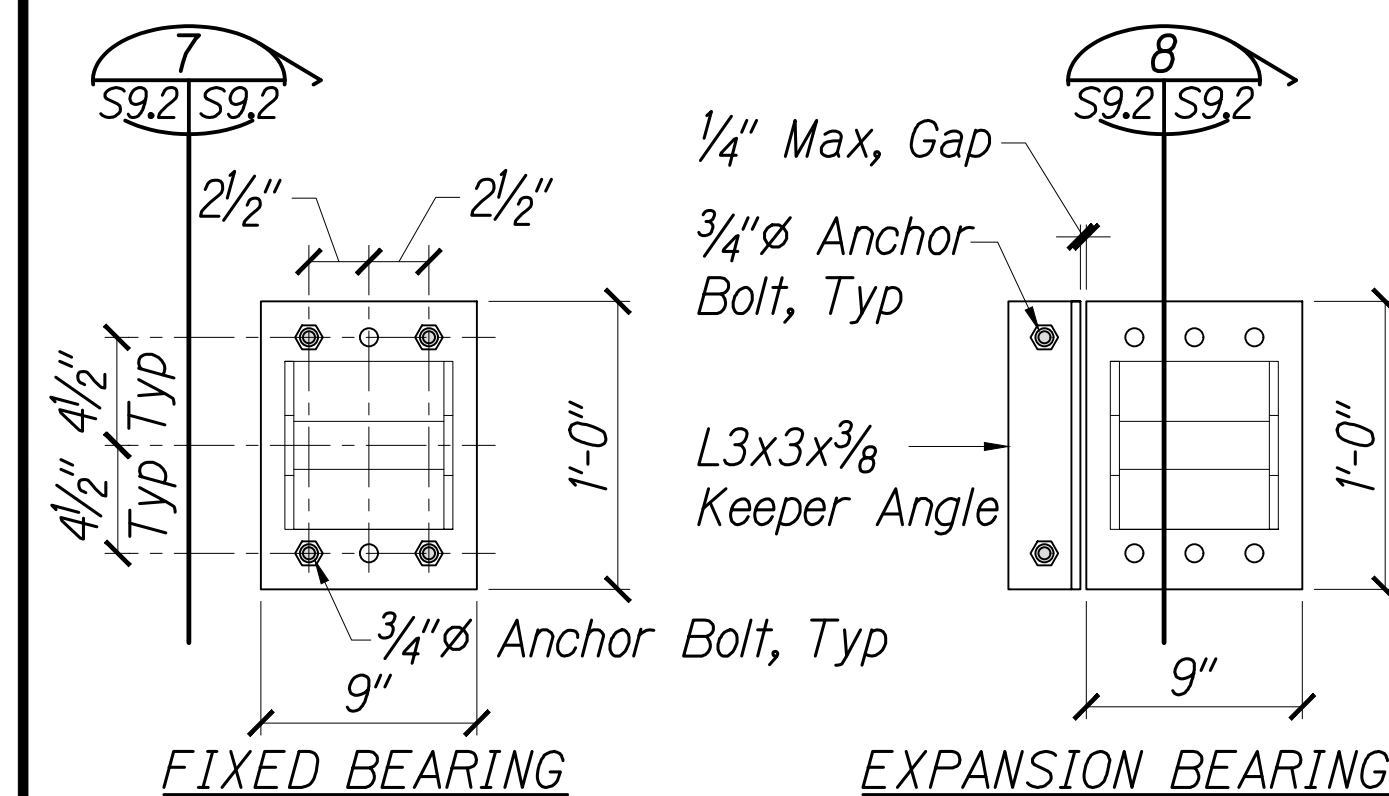
TYPICAL ABUTMENT SECTION SHOWING REINFORCING

Scale: 3/4" = 1'-0"

5
S9.2 S9.2

Legend:

- Denotes 3/4" ϕ x 1'-6" (Embedment) Headed Anchor Bolt, With Nuts and Washers.
- Denotes no Bolts



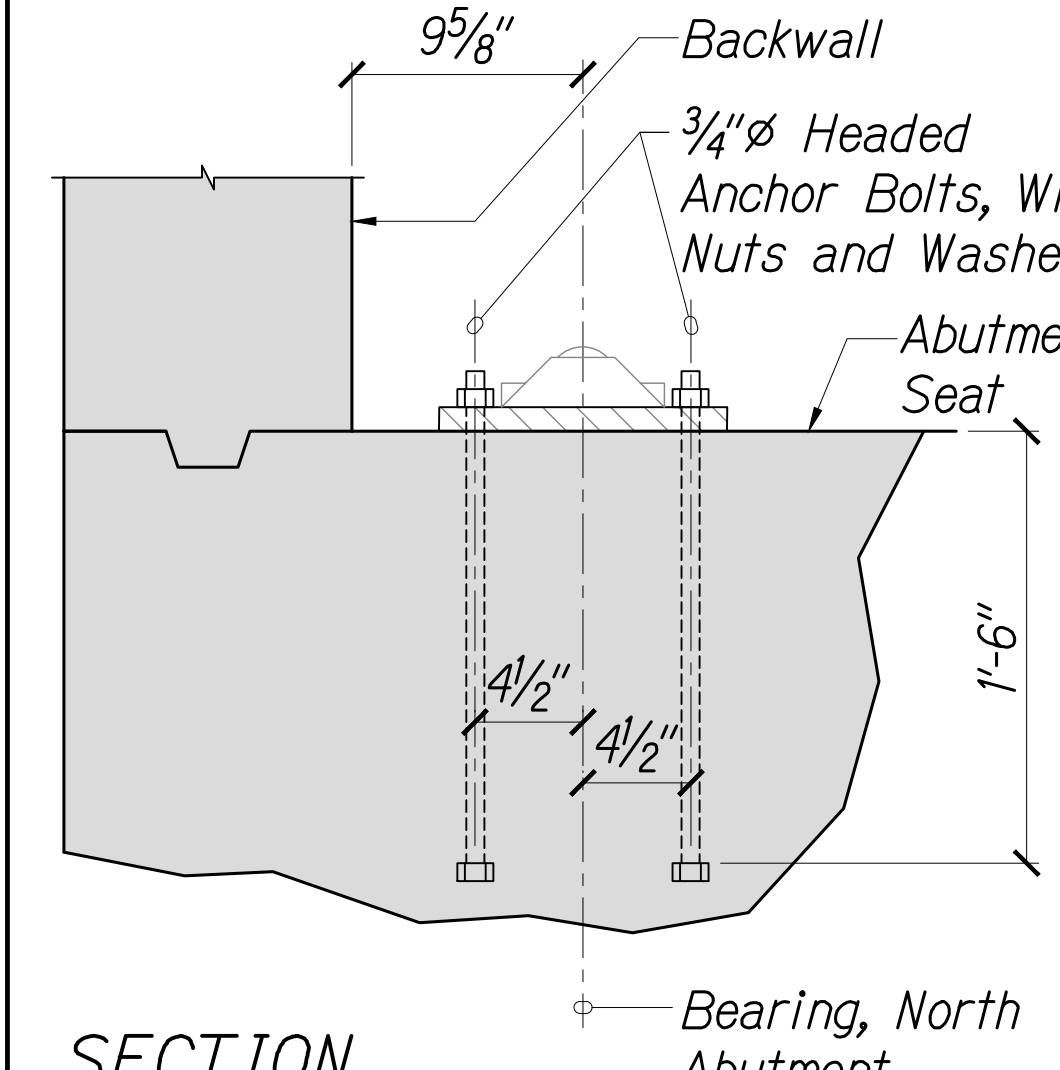
FIXED BEARING BEARING DETAIL

Scale: 1 1/2" = 1'-0"

6
S9.2 S9.2

Notes:

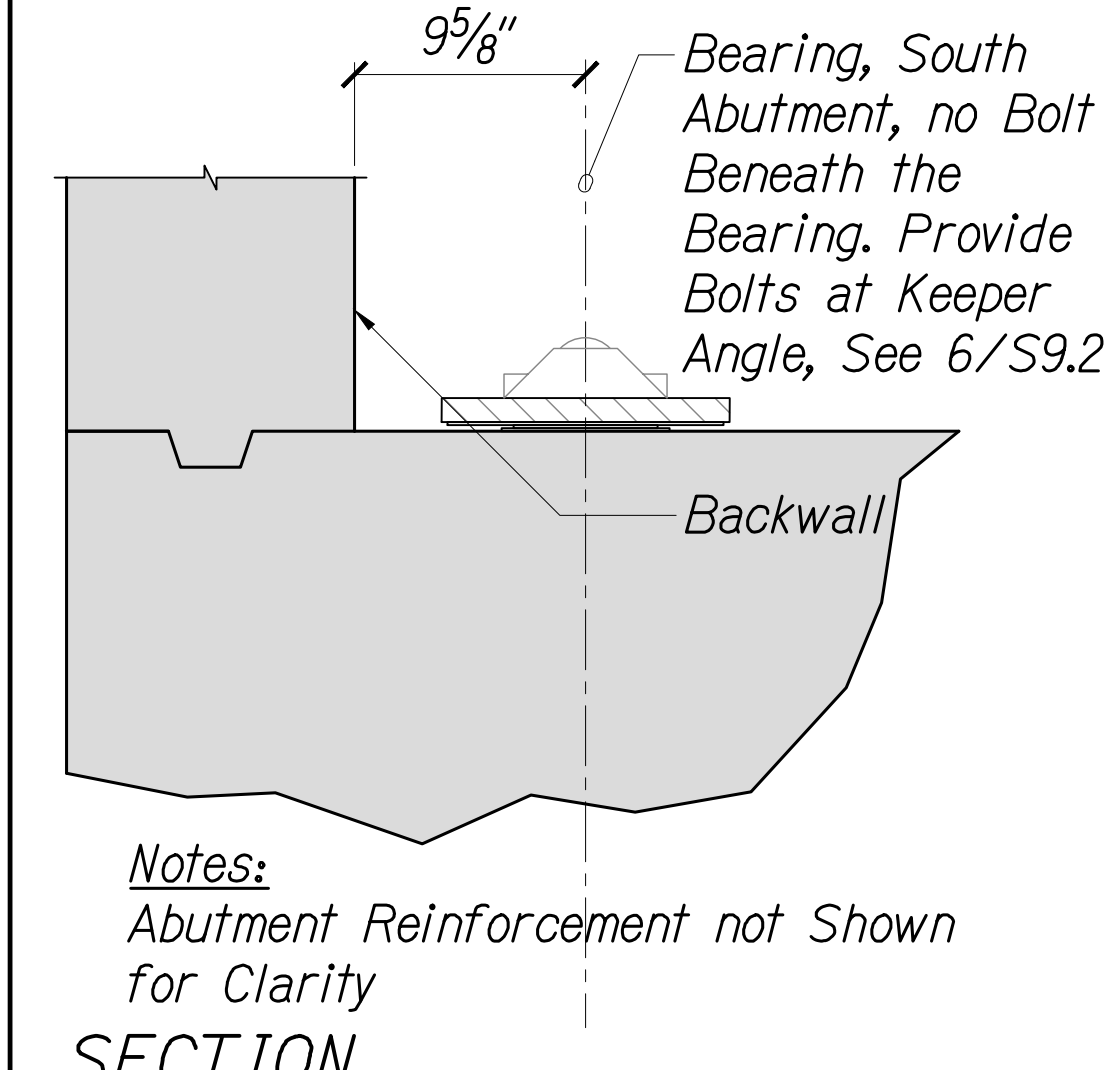
- All Bearing Appurtenances, Except the Anchor Bolts, Nuts, Washers and Keeper Angles, are Supplied by the Temporary Bridge Manufacturer.
- Anchor Bolts Shall Conform to ASTM F1554, Grade 105, Hot-Dip Galvanized According to ASTM A153.
- Steel Angles Shall Conform to ASTM A36, Hot-Dip Galvanized According to ASTM A123.



SECTION FIXED BEARING

Scale: 1 1/2" = 1'-0"

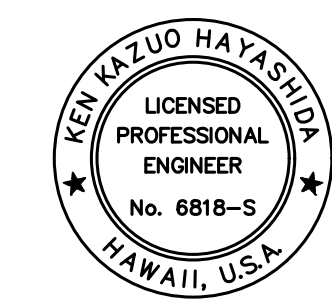
7
S9.2 S9.2



SECTION EXPANSION BEARING

Scale: 1 1/2" = 1'-0"

8
S9.2 S9.2



THIS WORK WAS PREPARED BY ME OR UNDER MY SUPERVISION.
APRIL 30, 2026
LIC. EXP. DATE

STATE OF HAWAII
DEPARTMENT OF TRANSPORTATION
HIGHWAYS DIVISION

Temporary Bridge Abutment Plans,
Sections, and Details

Honopailani Highway
Rehabilitation of Honolulu Bridge
F.A.P. No. BR-030-1(37)

Scale: As Shown Date: August 2024
SHEET No. S9.2 OF 42 SHEETS