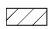
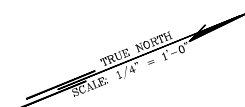


DIST. NO.	STATE	FED. AID PROJ. NO.	FISCAL YEAR	SHEET NO.	TOTAL SHEETS
MAUI	HAW.	BR-030-1(37)	2024	ADD.29	42


#### Legend:

 Denotes to be demolished, removed and disposed of.



#### Site specific BMP Notes:

1. A suggested BMP plan is presented to clarify requirements of the project.
2. Contractor shall submit BMP plan for approval to the engineer to show means of debris containment.
3. Provide BMPs to keep debris out of stream during demolition.
4. Water shall be used to minimize and control grinding generated dust and residues. All grinding water shall be removed via vacuum from the bridge roadway on a continuous basis immediately behind the grinding operations and transported for off-site disposal.
5. During demolition, water shall be used to dampen the area that is being demolished prior to starting the demolition. During the demolition process a water spray shall be used to minimize fugitive dust. The ground shall be sprayed with water either by water truck or some type of water spray to minimize fugitive particulate emissions from haul trucks and demolition equipment.
6. Avoid working in high winds.

11/26/24  Added BMP Plan and Notes

DATE REVISION

STATE OF HAWAII  
DEPARTMENT OF TRANSPORTATION  
HIGHWAYS DIVISION

Existing Bridge Demolition and BMP Plan

Honoapiʻilani Highway  
Rehabilitation of Honouliuli Bridge  
F.A.P. No. BR-030-1(37)

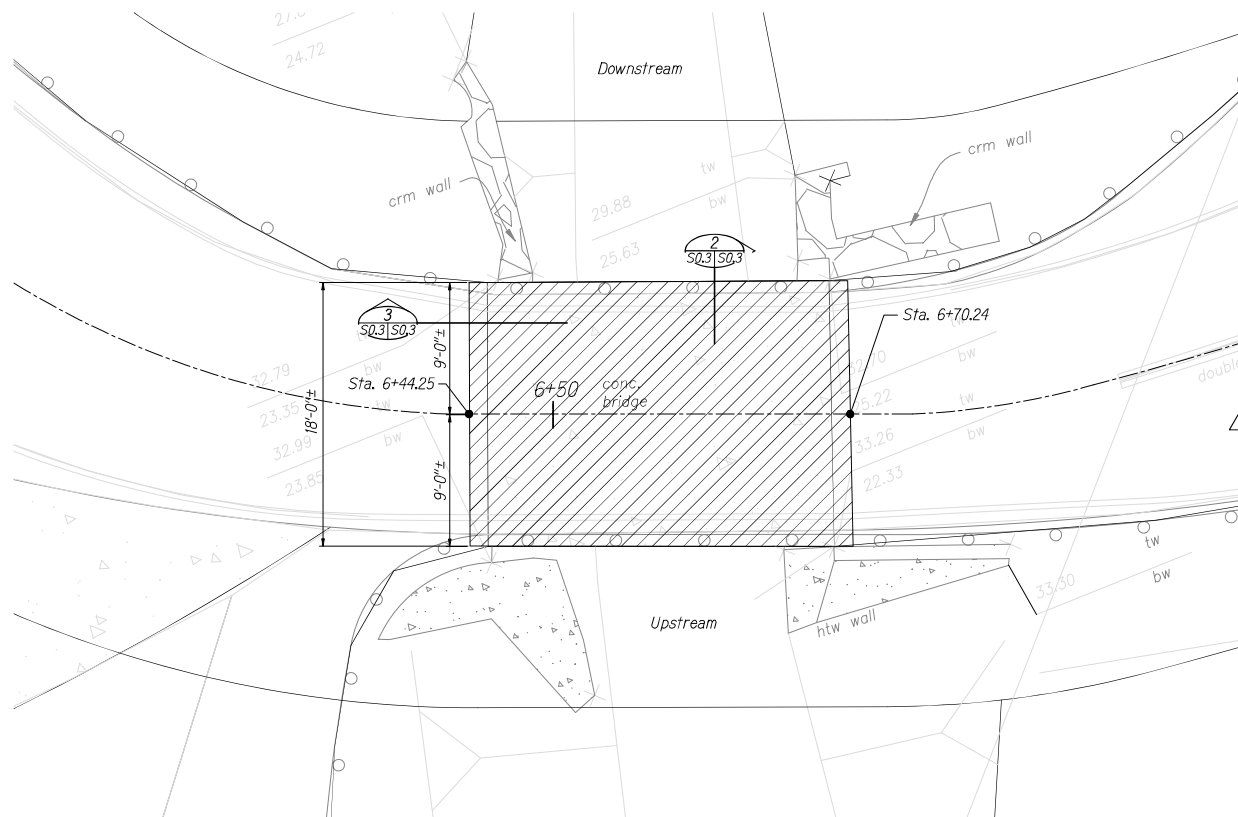
Scale: As Shown Date: August 2024

SHEET No. S0.3 OF 42 SHEETS



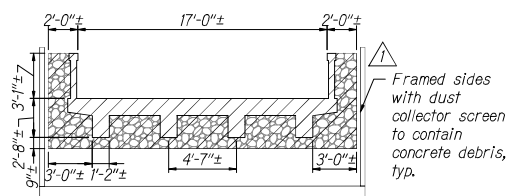
THIS WORK WAS PREPARED BY ME, OR UNDER MY SUPERVISION.  
*[Signature]*  
APR 30, 2025  
LIC. EXP. DATE

0' 2' 4' 8' 12'  
1/4" = 1'-0"



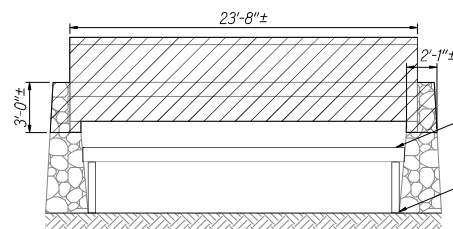
EXISTING BRIDGE PLAN  
Scale: 1/4" = 1'-0"

 S0.3 S0.3



EXISTING BRIDGE SECTION  
Scale: 1/4" = 1'-0"

 S0.3 S0.3



EXISTING BRIDGE SECTION  
Scale: 1/4" = 1'-0"

 S0.3 S0.3

DESIGNED BY	SAFETY CHECKED BY
DRAWN BY	SAFETY CHECKED BY
NOTED BY	SAFETY CHECKED BY
IN CHARGE	SAFETY CHECKED BY
DATE	DATE