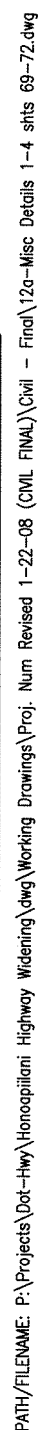


PLOT DATE: 19-29-2008 @ 01:19 pm

LAST UPDATE: 09-13-2008 @ 10:09 am

PATH/FILENAME: P:\Projects\Dot-Hwy\Honoopiitani Highway Widening\dwg\Working Drawings\Proj. Num Revised 1-22-08 (CIVIL\_FINAL)\Cvll - Final\12a-Misc Details 1-4 shts 69-72.dwg



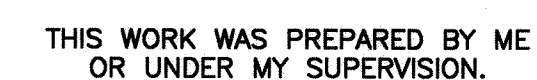
TYPICAL GATE DETAIL  
Not To Scale

DETECTABLE WARNING NOTES:

- 
- The diagram shows a cross-section of a sidewalk and ramp assembly. At the top, a horizontal line is labeled "SIDEWALK" with arrows pointing to the left and right edges. Below this, there are four rectangular sections. The first section on the left is labeled "RAMP" with an arrow pointing to the right. The second section is empty. The third section is labeled "RAMP" with an arrow pointing to the left. The fourth section on the right is empty. Below these sections, there is a horizontal line. Underneath this line, there is a rectangular area filled with a cross-hatch pattern, labeled "CURB RAMP" with an arrow pointing to the right. To the right of this patterned area, there is a vertical dimension line labeled "24\"/>

Technical drawing of a dome section. The main view is a circular cross-section of a dome. It features a grid of 12 circular holes arranged in 3 rows and 4 columns. The center-to-center distance between adjacent holes is 2.35". The distance from the center of the grid to the left edge of the dome is 6". The distance from the center of the grid to the bottom edge of the dome is 2.35". The top of the dome is labeled "Dome" and "See Detail This Sht". The bottom edge is labeled "Curb Face". A bracketed area on the left side is labeled "Detectable Warning Surface". To the right, a detailed view of the dome's top is shown, labeled "DOME SECTION". This detail shows a semi-circular top with a width of 0.9" and a height of 0.2". The distance from the center of the dome to the left edge of the detail is 0.4".

*Not To Scale*



Alan G. Seward

MISCELLANEOUS DETAILS - 1

Scale: As Shown      Date: October 2008

**SHEET No. 1 OF 4 SHEETS**

PLOT DATE: 19-29-2008 @ 01:19 pm

AST UPDATE: 09-13-2008 @ 10:09 am

PATH/FILENAME: P:\Projects\Dot-Hwy\Honoopi\Highway Widening\dwg\Working Drawings\Proj. Num Revised 1-22-08 (CIVIL FINAL)\Civil - Final\12a-Misc Details 1-4 shts 69-72.dwg



- TYPICAL GATE STOP POST

*Not To Scale*



### TYPE 3 STANDARD BARRICADE

*Not To Scale*



*Not To Scale*



1. *Omit 8" Thick Conc. Slab & Rebars When Gate Post Is Installed In Conc. Walks & Conc. Pavements. (Make Saw-Cut In Existing Conc. When Installing Gate Posts In Conc. Walk & Pavements)*
2. *Where The Existing Grade Slopes, The Finish Grade Of The 8" Slab Shall Follow The General Slope Of The Ground.*



1. *The Orange And White Stripes Shall Slant Downward Toward The Side On Which Traffic Is To Pass And Shall Be ReflectORIZED With Reflective Sheeting.*
2. *The Contractor May Submit Alternate Designs For Approval.*
3. *Barricade Details Shall Conform To The "Manual On Uniform Traffic Control Devices For Streets And Highways," 2003, By The Federal Highway Administration And As Amended.*



Alamy Gernot

MISCELLANEOUS DETAILS - 2

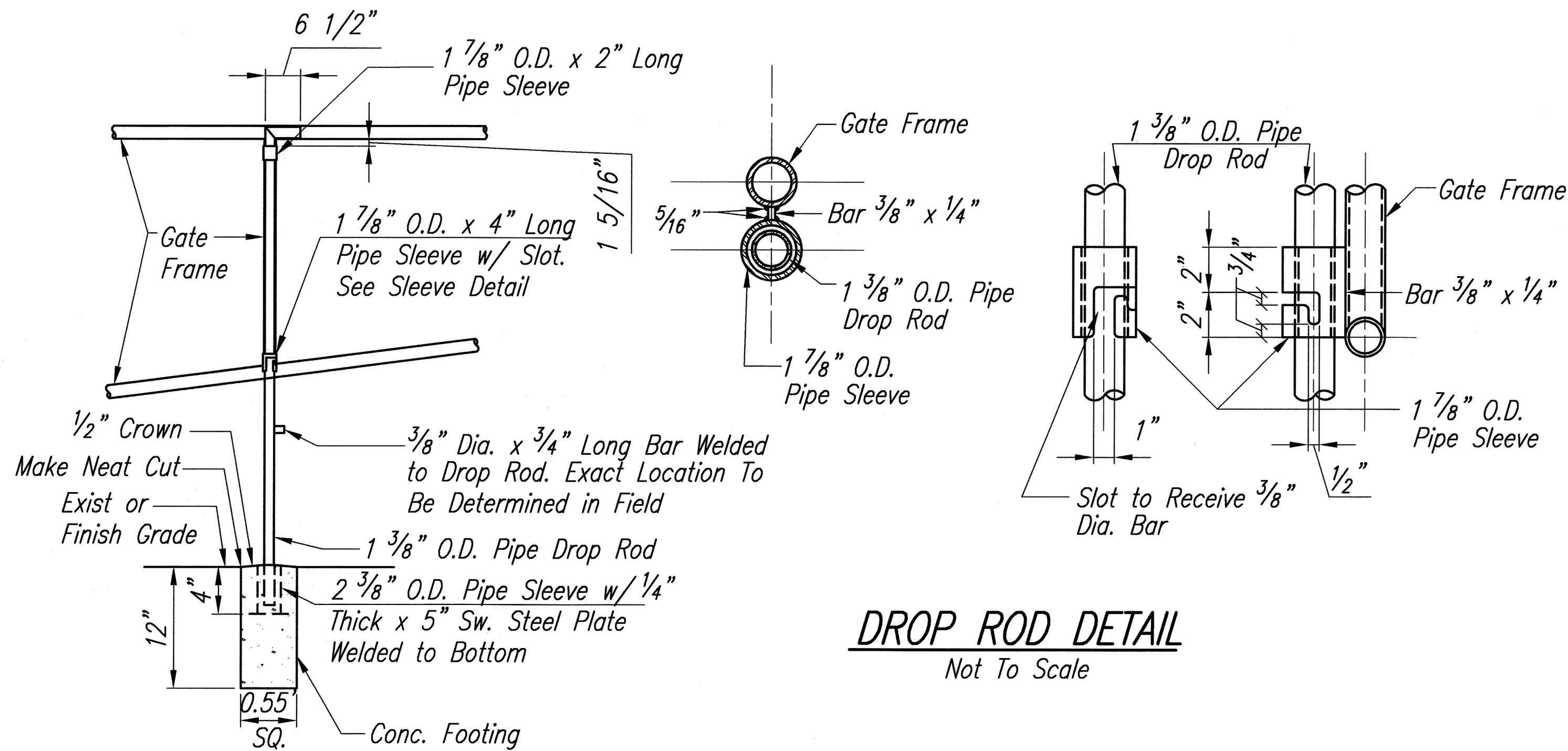
Honoapiilani Highway Widening  
Lahainaluna Road to Aholo Road  
Project No. STP-030-1(39)

Scale: As Shown Date: October 2008

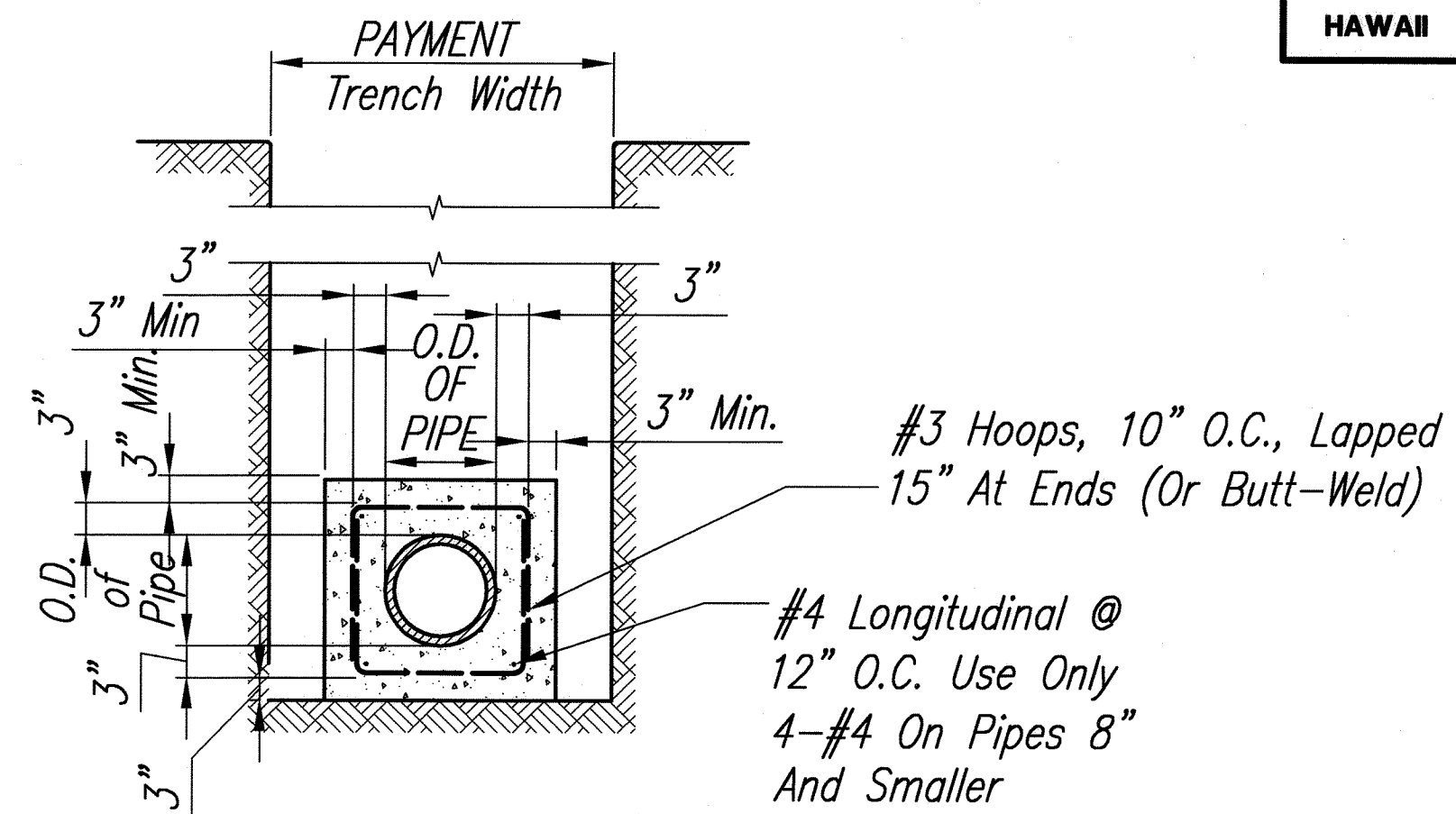
SHEET No. 2 OF 4 SHEETS



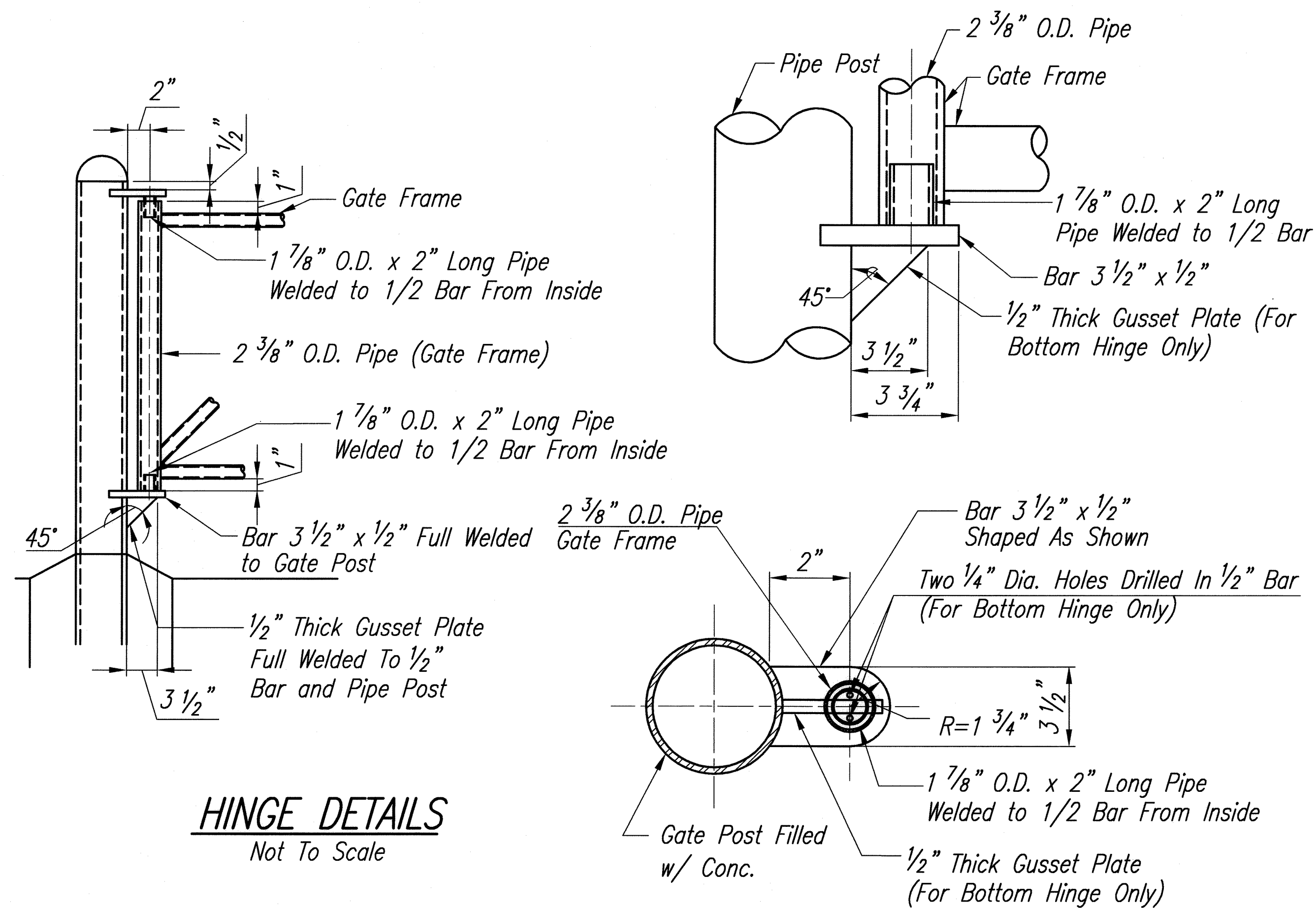
FED. ROAD DIST. NO.	STATE	PROJ. NO.	FISCAL YEAR	SHEET NO.	TOTAL SHEETS
HAWAII	HAW.	STP-030-1(39)	2008	71	194



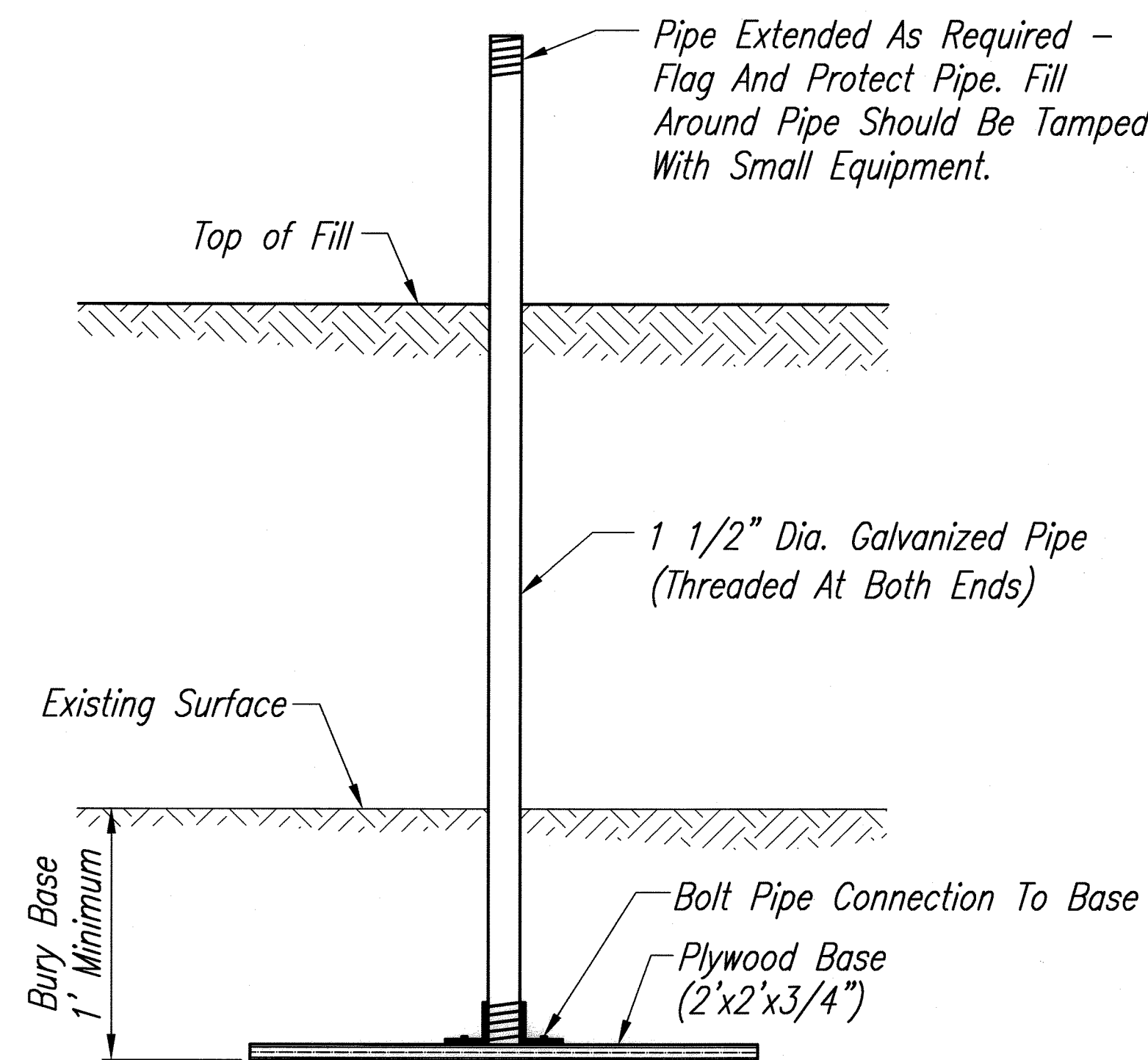
**DROP ROD DETAIL**  
Not To Scale



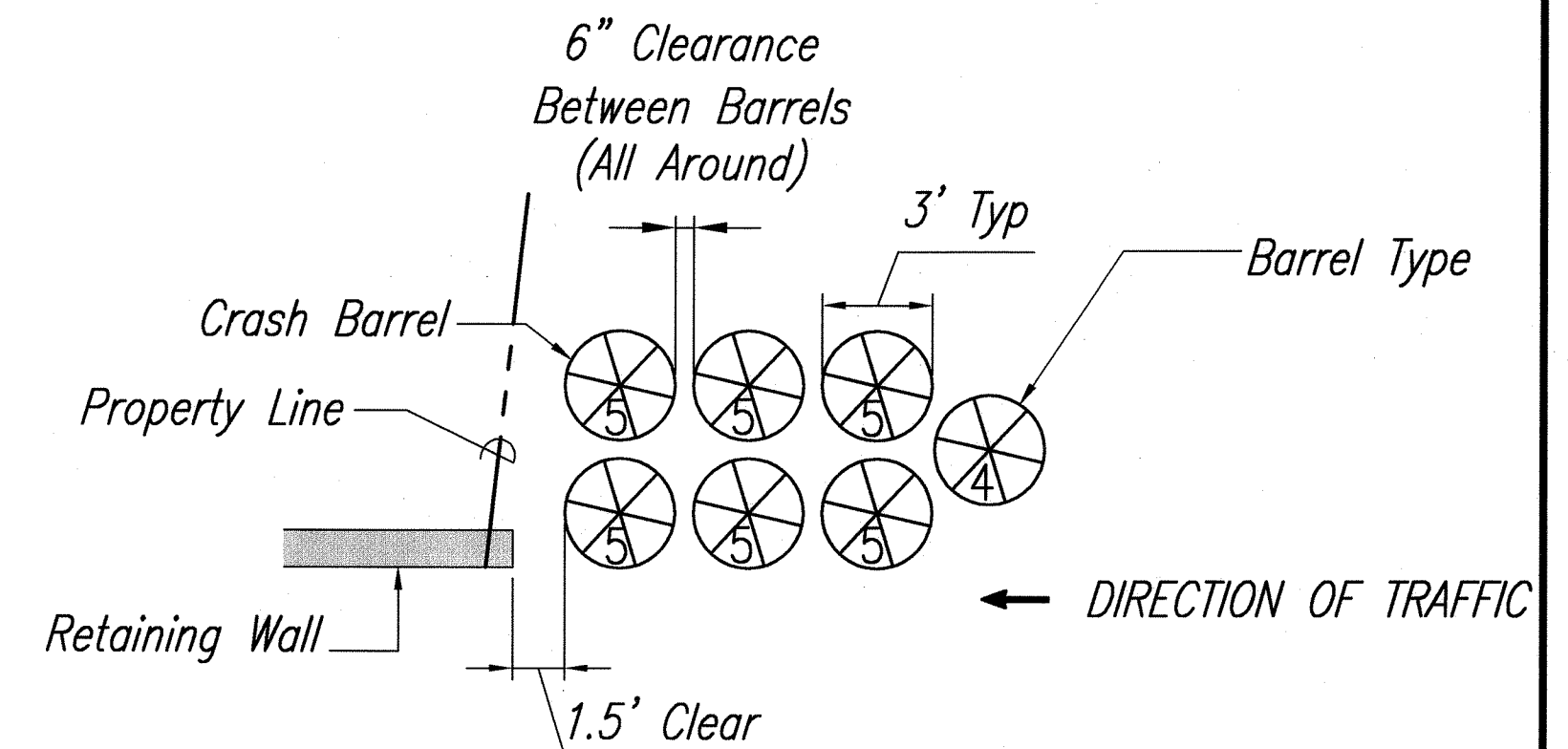
**DETAIL OF REINFORCED CONCRETE JACKET**  
Scale: 3/4" = 1'-0"



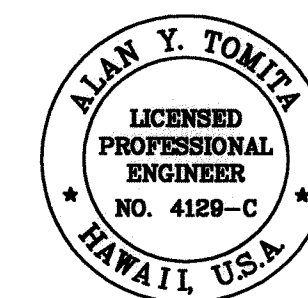
**HINGE DETAILS**  
Not To Scale



**TYPICAL SETTLEMENT GAGE DETAIL**  
Scale: Not To Scale



**Sta 77+77± CRASH BARRELS DETAIL**  
Scale: Not To Scale



THIS WORK WAS PREPARED BY ME  
OR UNDER MY SUPERVISION.

*Alan Y. Tomita*

STATE OF HAWAII  
DEPARTMENT OF TRANSPORTATION  
HIGHWAYS DIVISION

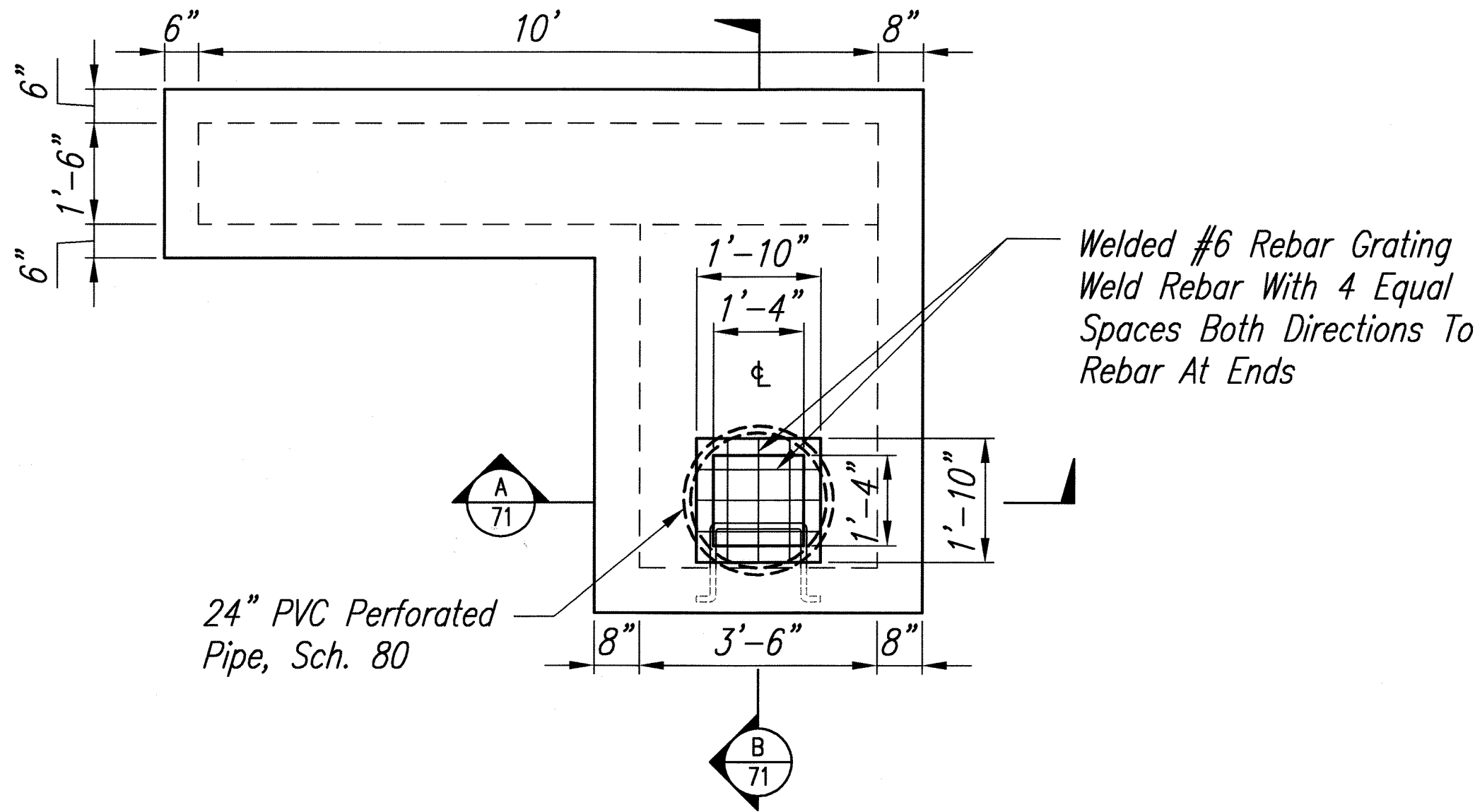
**MISCELLANEOUS DETAILS - 3**

*Honoapiilani Highway Widening  
Lahainaluna Road to Aholo Road  
Project No. STP-030-1(39)*

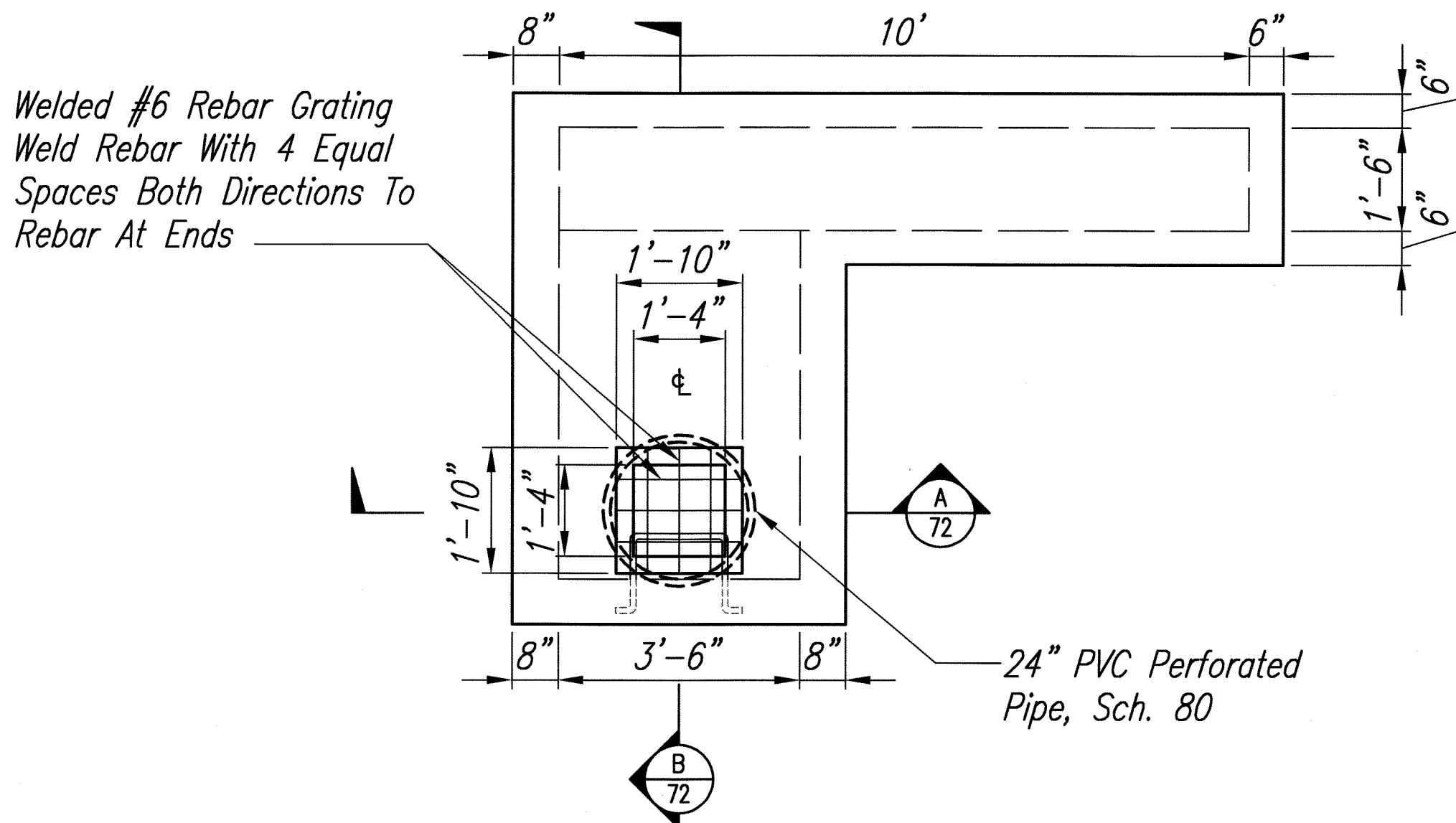
Scale: As Shown Date: October 2008

SHEET No. 3 OF 4 SHEETS

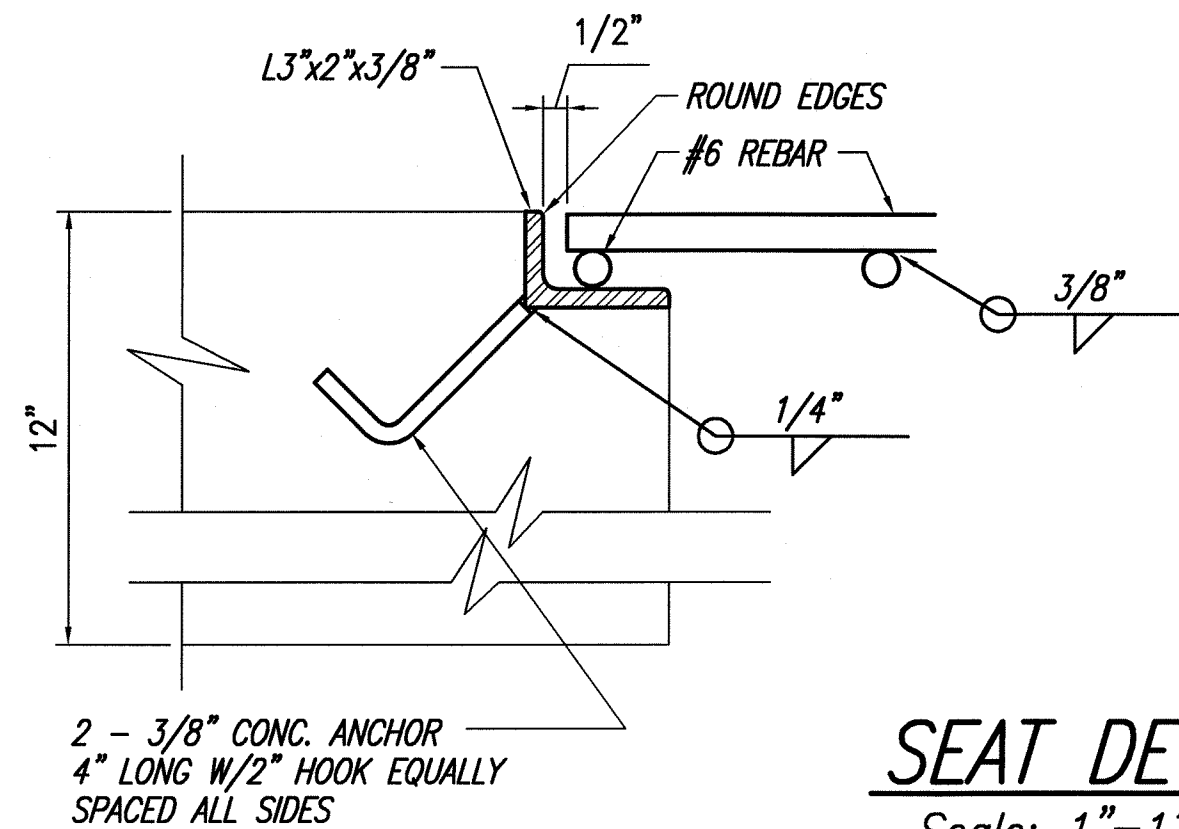
FED. ROAD DIST. NO.	STATE	PROJ. NO.	FISCAL YEAR	SHEET NO.	TOTAL SHEETS
HAWAII	HAW.	STP-030-1(39)	2008	72	194



TYPE "B1" CATCH BASIN / DRYWELL - PLAN  
Scale: 1/2" = 1'-0"

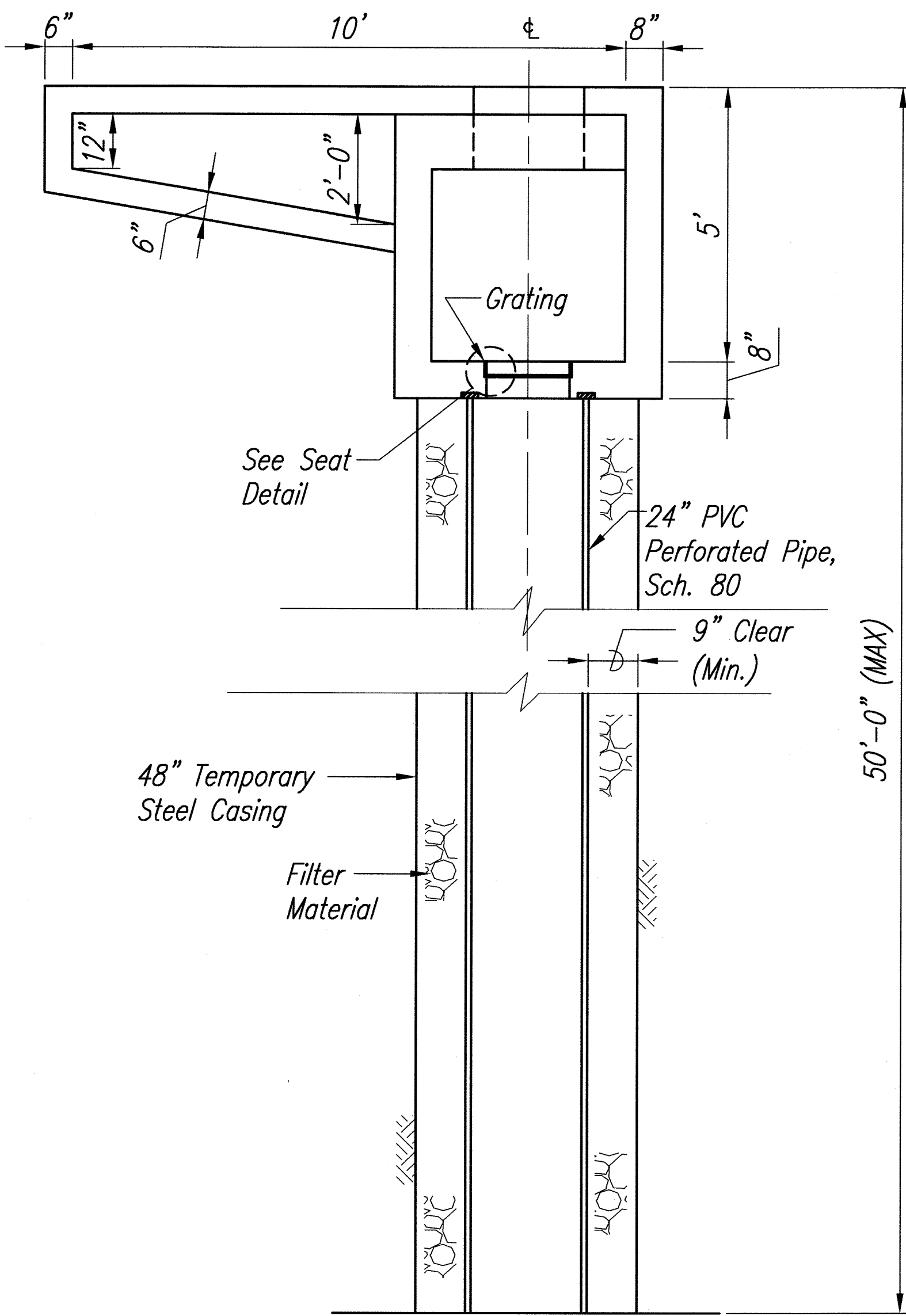


TYPE "C1" CATCH BASIN / DRYWELL - PLAN  
Scale: 1/2" = 1'-0"



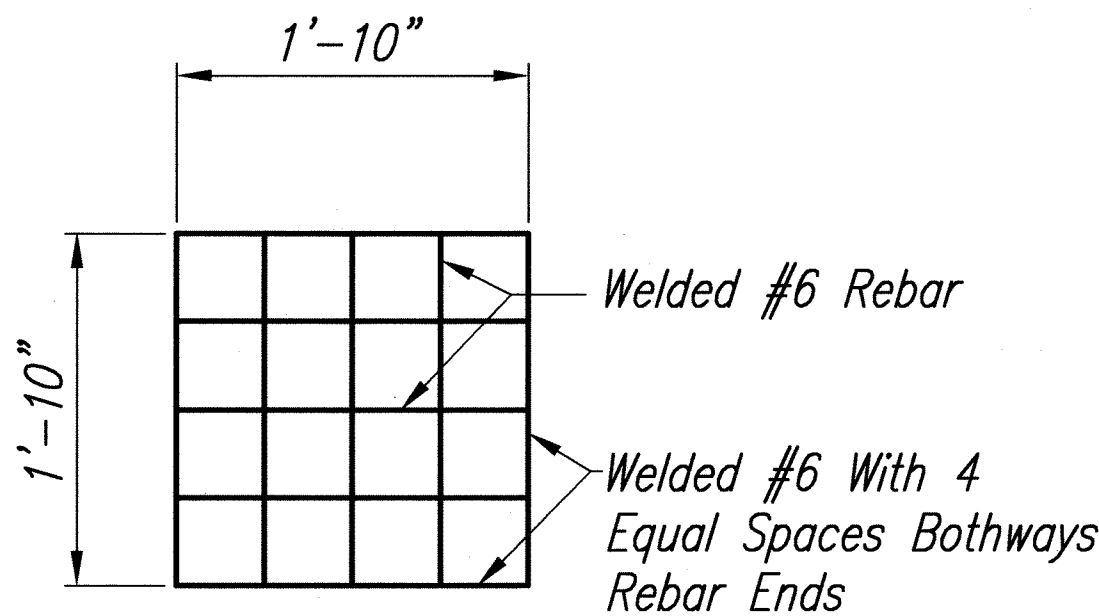
SEAT DETAIL  
Scale: 1" = 1'-0"

- NOTES:
- Grating Shall Be Hot Dipped Galvanized After Fabrication.
  - All Steel Shall Be Structural Grade (ASTM A36 Min.)
  - All Welds 5/16" Unless Otherwise Noted.
  - All Welding Shall Be in Accordance With Current Edition Of Reinf. Steel Welding Code AWS D1.4.

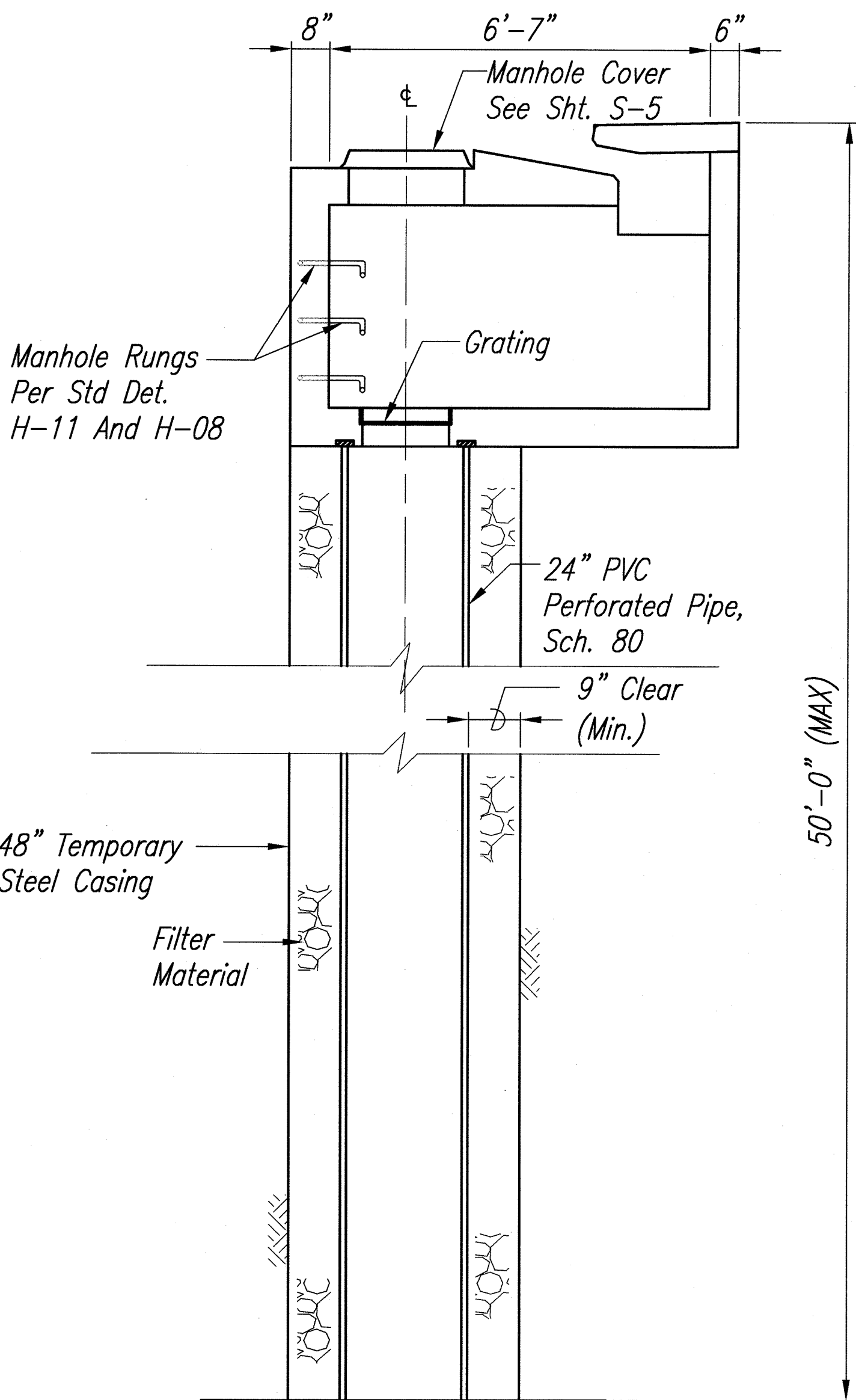


TYPE "B1" & "C1" CATCH BASIN / DRYWELL  
SECTION "A"  
Scale: 1/2" = 1'-0"

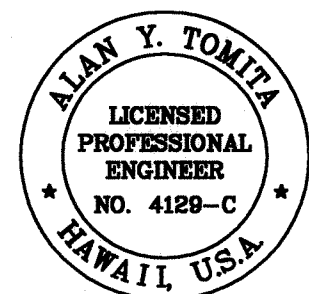
NOTE:  
See Structural Sht. S-5 for Reinforcing.



PLAN - REBAR GRATING  
Scale: 1" = 1'-0"



TYPE "B1" & "C1" CATCH BASIN / DRYWELL  
SECTION "B"  
Scale: 1/2" = 1'-0"



THIS WORK WAS PREPARED BY ME  
OR UNDER MY SUPERVISION.

Alan Y. Tomita

STATE OF HAWAII  
DEPARTMENT OF TRANSPORTATION  
HIGHWAYS DIVISION

MISCELLANEOUS DETAILS - 4

Honoapiilani Highway Widening  
Lahainaluna Road to Aholo Road  
Project No. STP-030-1(39)

Scale: As Shown Date: October 2008

SHEET No. 4 OF 4 SHEETS