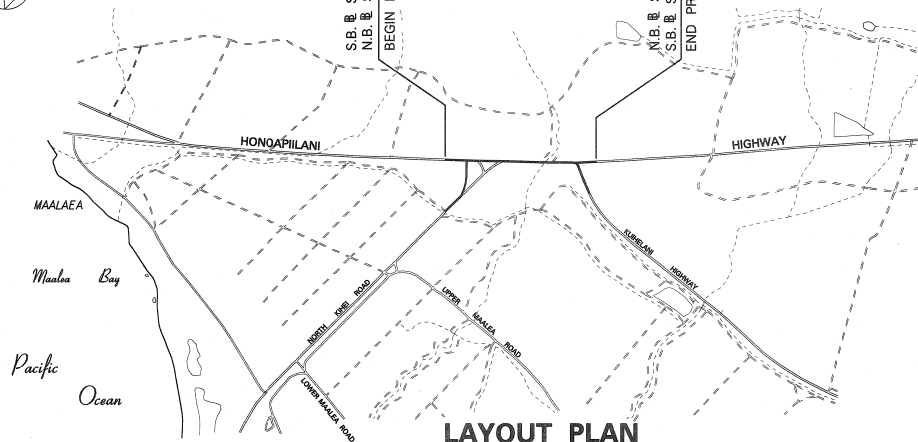
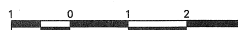


INDEX TO DRAWINGS	
SHEET NO.	DESCRIPTION
1	TITLE SHEET
2	STANDARD PLANS SUMMARY
3	GENERAL NOTES AND LEGEND
4	NPDES GENERAL NOTES
5 - 7	TYPICAL SECTIONS AND DETAILS
8 - 12	ROADWAY PLANS AND PROFILES
13	DETAIL PLAN OF NORTH KIHAI ROAD
14	DETAIL PLAN OF KUIHELANI HIGHWAY
15	PROFILE AND SUPERELEVATION OF NORTH KIHAI ROAD
16	PROFILE OF KUIHELANI HIGHWAY
17 - 23	GRADING PLANS
24 - 40	CROSS SECTIONS
41	QUADGUARD SCHEDULE
42	GUARDRAIL DETAIL PLAN AT PARKING FACILITY
43	DOUBLE NESTED GUARDRAIL DETAIL
44	FLEAT 350 DETAILS
45	QUADGUARD DETAILS
46 - 47	GUARDRAIL DETAILS
48	INERTIAL BARRIER DETAILS
49 - 85	BRIDGE PLANS
86 - 104	DRAINAGE PLANS
105 - 126	ELECTRICAL PLANS
127 - 139	PAVEMENT MARKING AND SIGNING PLANS



LAYOUT PLAN

NET LENGTH OF PROJECT.....0.90 MILES



STATE OF HAWAII

DEPARTMENT OF TRANSPORTATION

HIGHWAYS DIVISION

HONOLULU, HAWAII

"AS-BUILT"

PLANS FOR

HONOAPIILANI HIGHWAY WIDENING

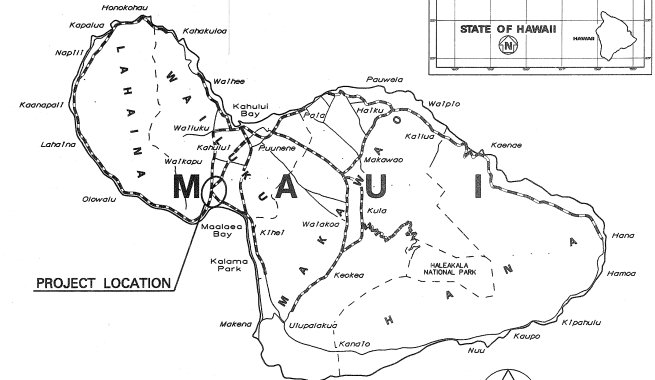
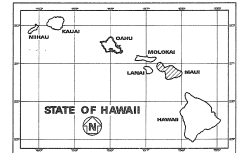
NORTH KIHAI ROAD TO KUIHELANI HIGHWAY

FEDERAL AID PROJECT NO. BR-NH-030-1(24)

DISTRICT OF WAILUKU

ISLAND OF MAUI

FED. ROAD DIST. NO.	STATE	FED. AID PROJ. NO.	FISCAL YEAR	SHEET NO.	TOTAL SHEETS
HAWAII	HAW.	BR-NH-030-1(24)	2000	1	139



SCALE IN MILES

----- FEDERAL AID PROJECTS PREVIOUSLY CONSTRUCTED OR UNDER CONSTRUCTION

MILE POST 5.800 TO MILE POST 4.900

DESIGN DESIGNATION

ADT (1996).....29,400
ADT (2016).....58,900
DHV.....4,700
D.....55/45
T.....3.5 %
V.....55 M.P.H.

CHANGES MADE DURING CONSTRUCTION HAVE BEEN INCORPORATED ON THESE PLANS EXCEPT CHANGES IN THE ORIGINAL THEORETICAL QUANTITIES. FOR ACTUAL QUANTITIES, REFER TO PROJECT LEDGER AND/OR COMPUTATION BOOK.

RESIDENT ENGINEER

DATE 7/19/06

DEPARTMENT OF TRANSPORTATION
STATE OF HAWAII

APPROVED:
DIR. OF TRANSPORTATION
DATE 4/12/06