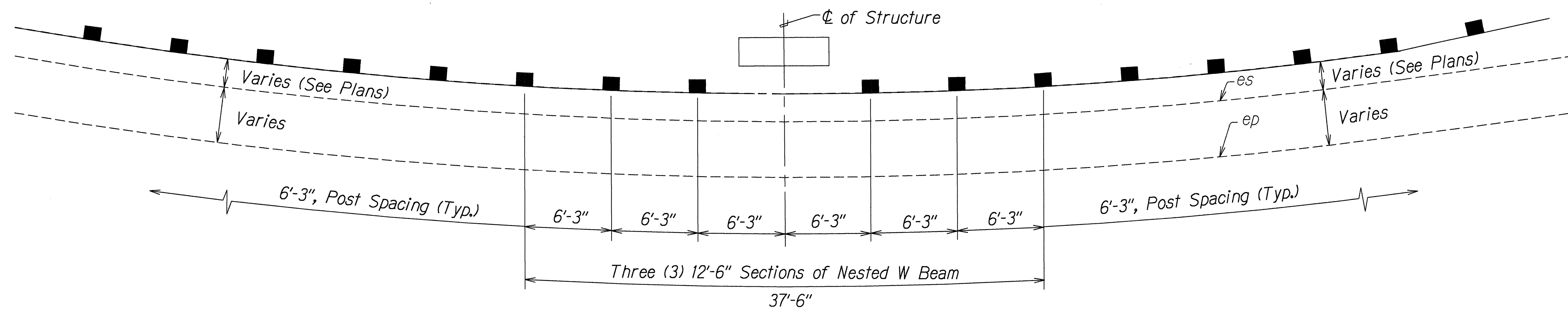


FED. ROAD DIST. NO.	STATE	FED. AID PROJ. NO.	FISCAL YEAR	SHEET NO.	TOTAL SHEETS
HAWAII	HAW.	BR-NH-030-K(24)	2000	43	139



*Note: All work associated with the Nested W Beam shall be incidental to Guardrail, Type 3 - Double Nested with Steel Post. This work shall be approved and as directed by the Engineer.*

DOUBLE NESTED GUARDRAIL DETAIL

Scale:  $\frac{1}{4}" = 1'-0"$

ORIGINAL	SURVEY PLOTTED BY _____	DATE _____
	DRAWN BY <u>G. Albrecht</u>	<u>12-19-98</u>
	TRACED BY _____	_____
NOTE BOOK	DESIGNED BY <u>K. Talsiguchi</u>	_____
<u>addxi</u>	QUANTITIES BY _____	_____
<u>phonms02</u>	CHECKED BY _____	_____

STATE OF HAWAII  
DEPARTMENT OF TRANSPORTATION  
HIGHWAYS DIVISION

**DETAILS**

*HONOAPIILANI HIGHWAY WIDENING*  
*North Kihei road to Kuihelani Highway*  
*F. A. Project No. BR-NH-030-1(24)*

Scale:  $\frac{1}{4}"=1'-0"$  Date: Feb., 2000

SHEET No. 1 OF 1 SHEETS