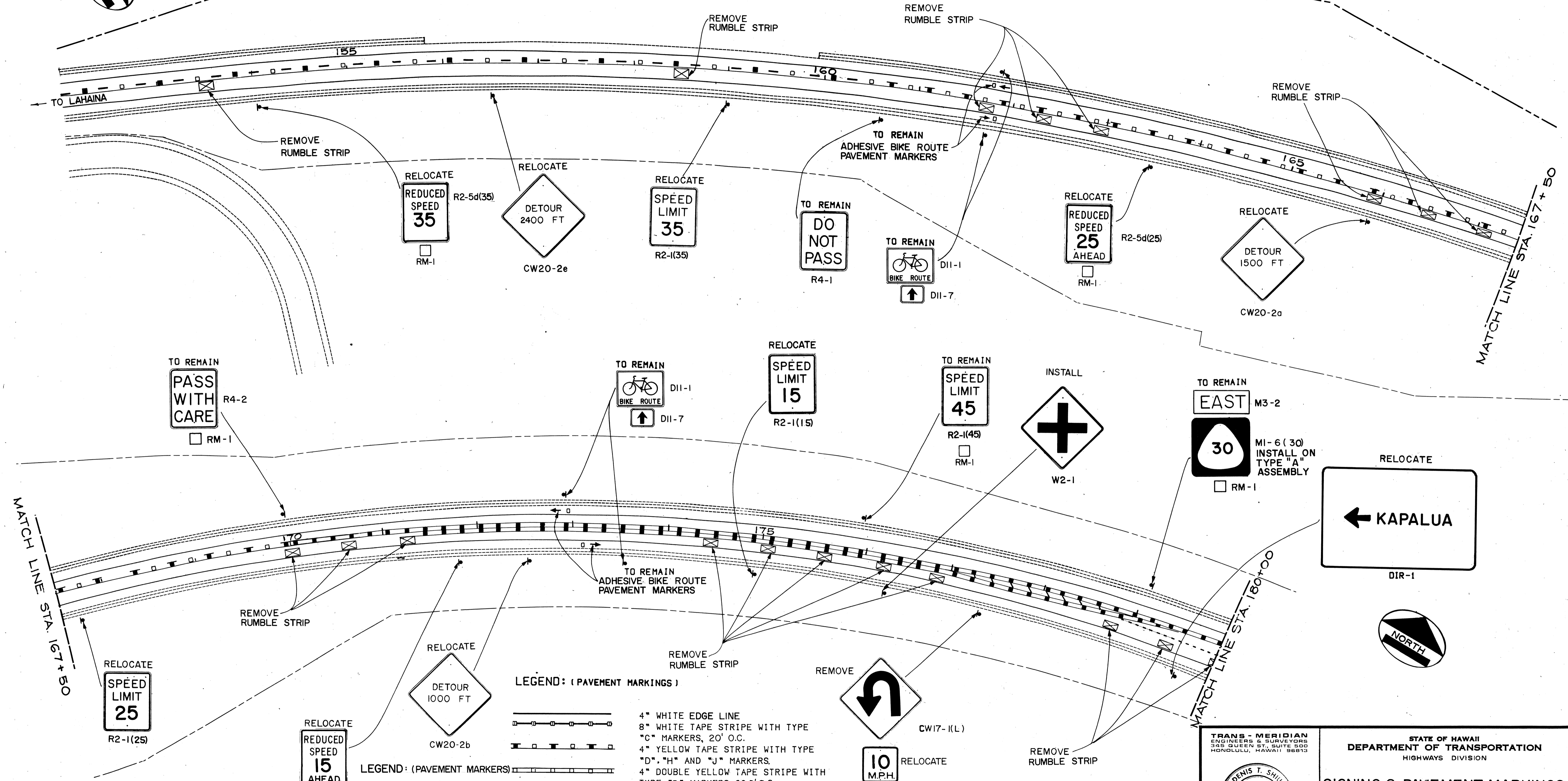
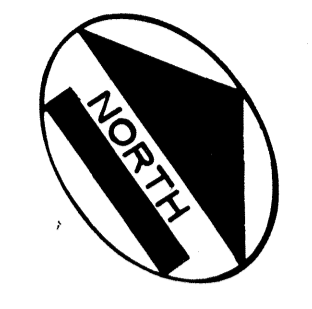


FED. ROAD DIST. NO.	STATE	FED. AID PROJ. NO.	FISCAL YEAR	SHEET NO.	TOTAL SHEETS
HAWAII	HAW.	F-030-(8)	1981	53	52



DATE
SURVEY PLOTTED BY
DRAWN BY
TRACED BY
QUANTITIES BY
CHECKED BY
NO.

LEGEND: (PAVEMENT MARKINGS)

- 4" WHITE EDGE LINE
- 8" WHITE TAPE STRIPE WITH TYPE "C" MARKERS, 20' O.C.
- 4" YELLOW TAPE STRIPE WITH TYPE "D", "H" AND "J" MARKERS.
- 4" DOUBLE YELLOW TAPE STRIPE WITH TYPE "D" MARKERS 20.0' O.C.
- 4" WHITE TAPE GUIDE LINE, TYPE "A" AND "C" MARKERS
- 4" DOUBLE YELLOW TAPE STRIPE AND 12" YELLOW TAPE DIAGONAL LINES 20.0' O.C. WITH TYPE "H" MARKERS 20.0' O.C.

LEGEND: (PAVEMENT MARKERS)

- 4 TYPE "A" OR 4 TYPE "J"
- TYPE "C"
- TYPE "D"
- TYPE "H"

NOTE: All Pavement Markings Shown on this Sheet are Existing and are to Remain.

TRANS - MERIDIAN
 ENGINEERS & SURVEYORS
 345 QUEEN ST., SUITE 500
 HONOLULU, HAWAII 96813

DENNIS T. SHIU
 REGISTERED PROFESSIONAL ENGINEER
 No. 2447
 HAWAII, U.S.A.

THIS WORK WAS PREPARED BY ME OR UNDER MY SUPERVISION.

STATE OF HAWAII
 DEPARTMENT OF TRANSPORTATION
 HIGHWAYS DIVISION

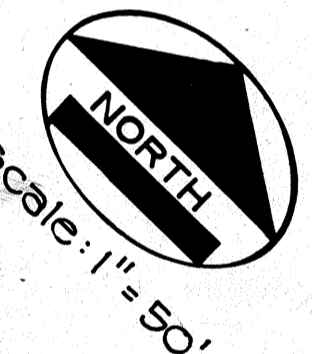
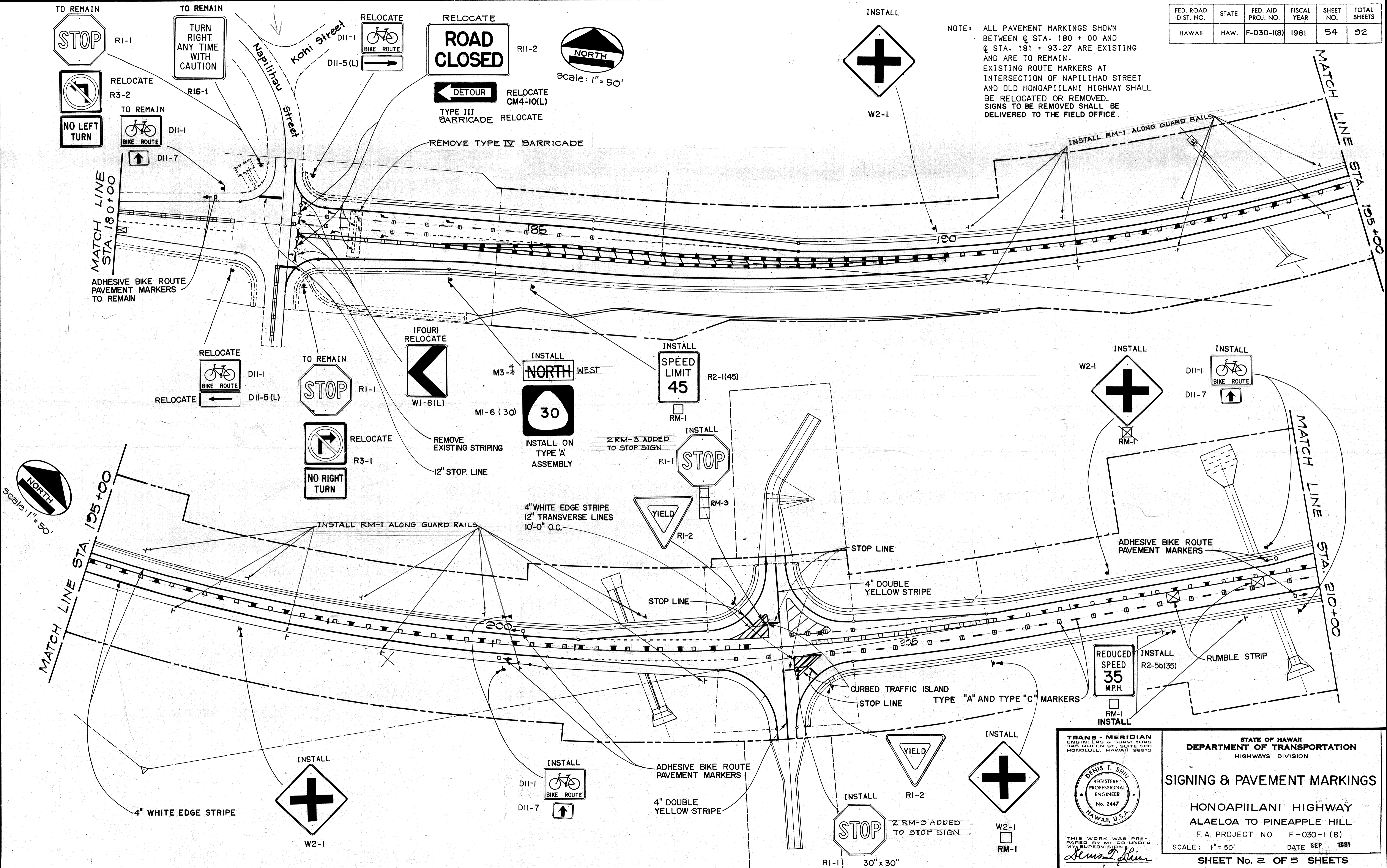
SIGNING & PAVEMENT MARKINGS

HONOAPIILANI HIGHWAY
 ALAELOA TO PINEAPPLE HILL
 F.A. PROJECT NO. F-030-1(8)
 SCALE: 1" = 50' DATE SEP 1981

SHEET No. 1 OF 5 SHEETS

FED. ROAD DIST. NO.	STATE	FED. AID PROJ. NO.	FISCAL YEAR	SHEET NO.	TOTAL SHEETS
HAWAII	HAW.	F-030-1(8)	1981	54	92

NOTE: ALL PAVEMENT MARKINGS SHOWN BETWEEN @ STA. 180 + 00 AND @ STA. 181 + 93.27 ARE EXISTING AND ARE TO REMAIN. EXISTING ROUTE MARKERS AT INTERSECTION OF NAPILIHAI STREET AND OLD HONOAPIILANI HIGHWAY SHALL BE RELOCATED OR REMOVED. SIGNS TO BE REMOVED SHALL BE DELIVERED TO THE FIELD OFFICE.



DATE
SURVEY PLOTTED BY
ORIGINAL PLAN
DRAWN BY
TRACED BY
NOTE BOOK
QUANTITIES BY
CHECKED BY
No.

DENIS T. SHIU
REGISTERED PROFESSIONAL ENGINEER
No. 2447
HAWAII, U.S.A.

THIS WORK WAS PREPARED BY ME OR UNDER MY SUPERVISION
Denis T. Shiu

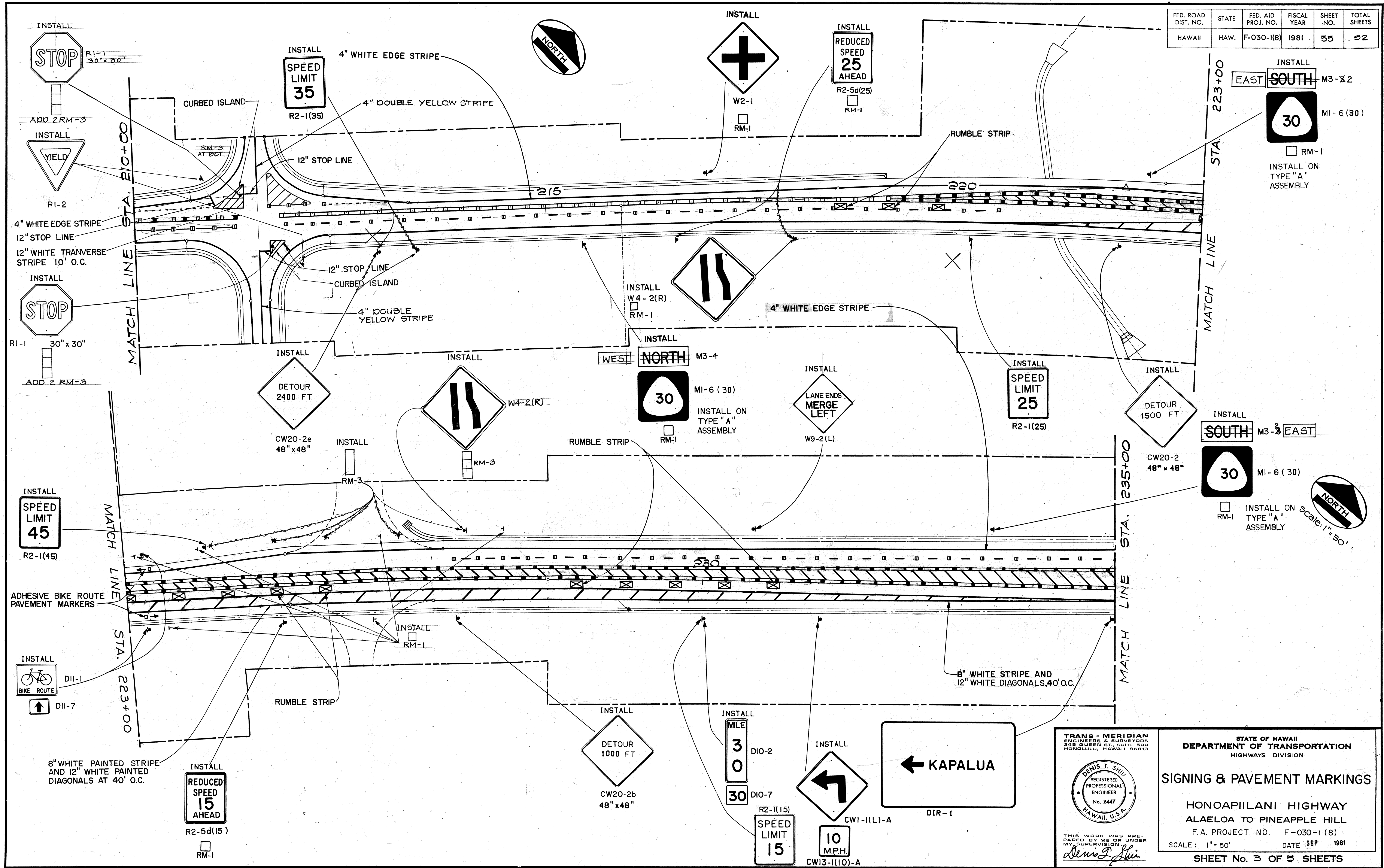
STATE OF HAWAII
DEPARTMENT OF TRANSPORTATION
HIGHWAYS DIVISION

SIGNING & PAVEMENT MARKINGS

HONOAPIILANI HIGHWAY
ALAELOA TO PINEAPPLE HILL
F.A. PROJECT NO. F-030-1(8)
SCALE: 1" = 50' DATE SEP 1981

SHEET No. 2 OF 5 SHEETS

FED. ROAD DIST. NO.	STATE	FED. AID PROJ. NO.	FISCAL YEAR	SHEET NO.	TOTAL SHEETS
HAWAII	HAW.	F-030-1(8)	1981	55	52



DATE
SURVEYED BY
DRAWN BY
DESIGNED BY
QUANTITIES BY
CHECKED BY
ORIGINAL PLAN
NOTE BOOK
No.

TRANS-MERIDIAN
ENGINEERS & SURVEYORS
545 QUEEN ST., SUITE 500
HONOLULU, HAWAII 96813

DENIS T. SHIU
REGISTERED PROFESSIONAL ENGINEER
No. 2447
HAWAII, U.S.A.

THIS WORK WAS PREPARED BY ME OR UNDER MY SUPERVISION
Denis T. Shiu

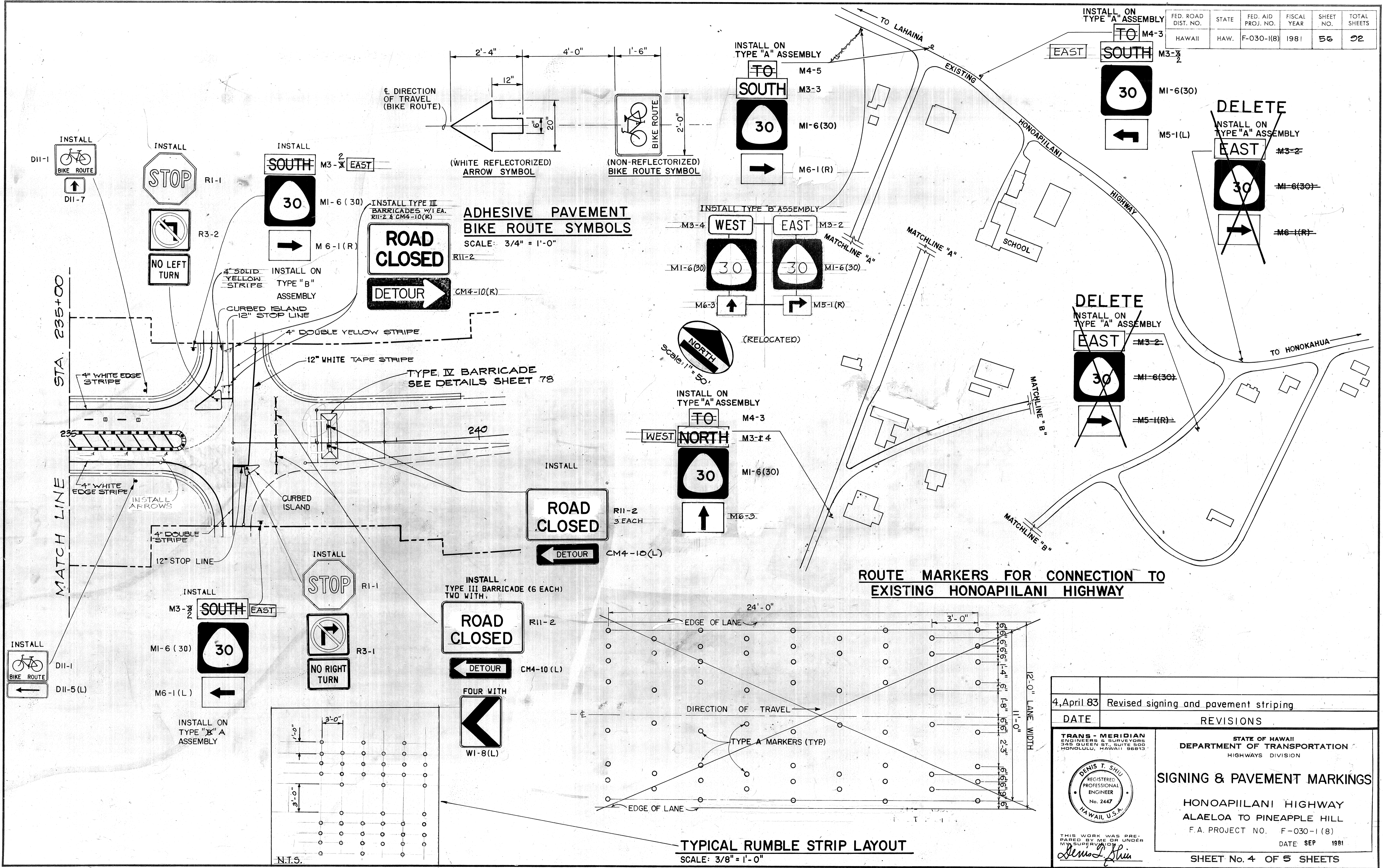
STATE OF HAWAII
DEPARTMENT OF TRANSPORTATION
HIGHWAYS DIVISION

SIGNING & PAVEMENT MARKINGS

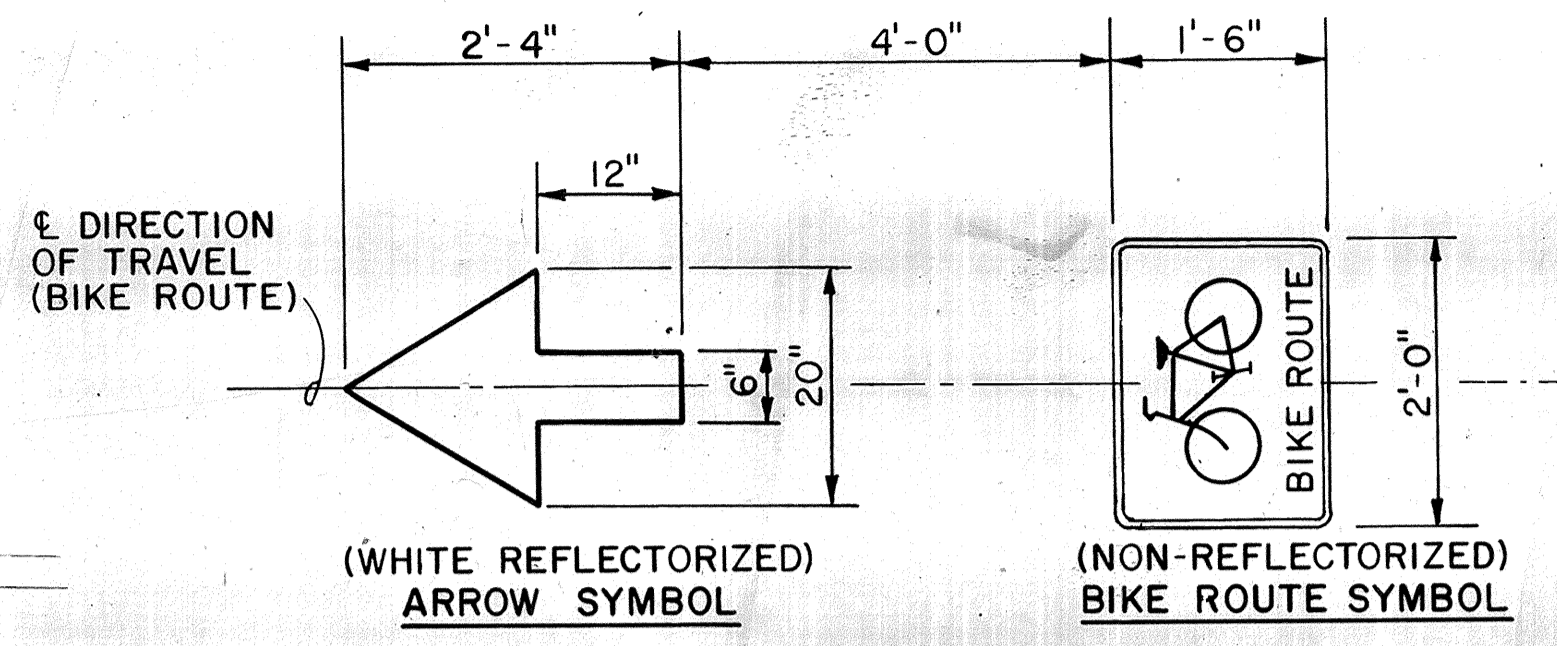
HONOAPIILANI HIGHWAY
ALAELOA TO PINEAPPLE HILL
F.A. PROJECT NO. F-030-1(8)
SCALE: 1" = 50' DATE SEP 1981

SHEET No. 3 OF 5 SHEETS

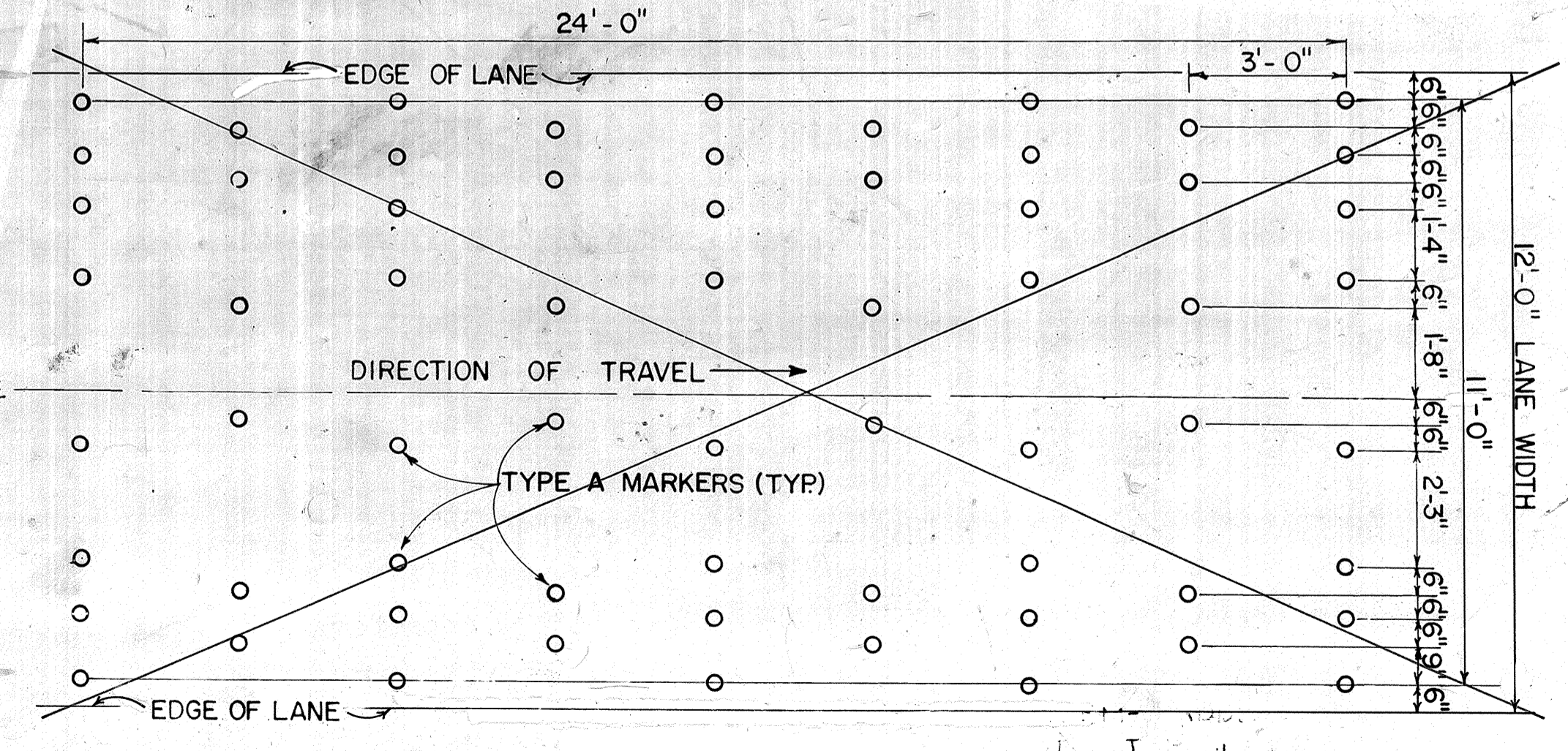
FED. ROAD DIST. NO.	STATE	FED. AID PROJ. NO.	FISCAL YEAR	SHEET NO.	TOTAL SHEETS
M4-3	HAWAII	F-030-1(8)	1981	56	92



ADHESIVE PAVEMENT BIKE ROUTE SYMBOLS
SCALE: 3/4" = 1'-0"



ROUTE MARKERS FOR CONNECTION TO EXISTING HONOAPIILANI HIGHWAY



TYPICAL RUMBLE STRIP LAYOUT
SCALE: 3/8" = 1'-0"

DATE	4, April 83	REVISIONS	Revised signing and pavement striping
<p>TRANS - MERIDIAN ENGINEERS & SURVEYORS 345 QUEEN ST., SUITE 500 HONOLULU, HAWAII 96813</p> <p>DENIS T. SHIU REGISTERED PROFESSIONAL ENGINEER No. 2447 HAWAII, U.S.A.</p> <p>THIS WORK WAS PREPARED BY ME OR UNDER MY SUPERVISION</p>			
<p>STATE OF HAWAII DEPARTMENT OF TRANSPORTATION HIGHWAYS DIVISION</p> <p>SIGNING & PAVEMENT MARKINGS</p> <p>HONOAPIILANI HIGHWAY ALAELOA TO PINEAPPLE HILL F.A. PROJECT NO. F-030-1(8) DATE SEP 1981</p>			
SHEET No. 4 OF 5 SHEETS			

DATE _____
DESIGNED BY _____
CHECKED BY _____
NO. _____

