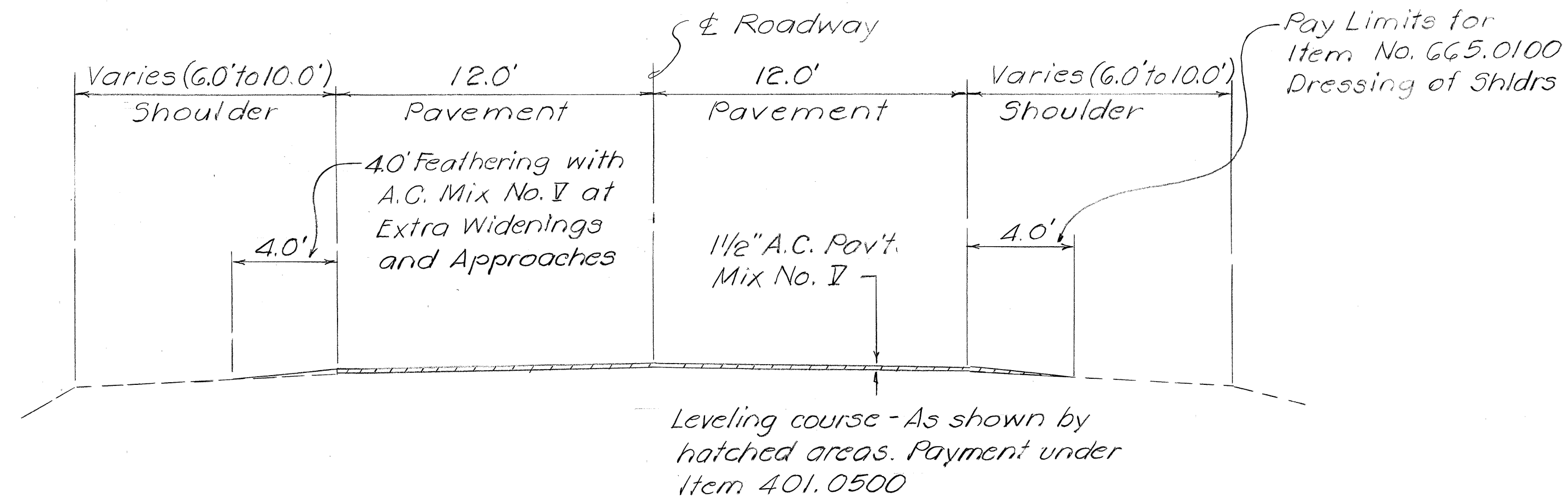
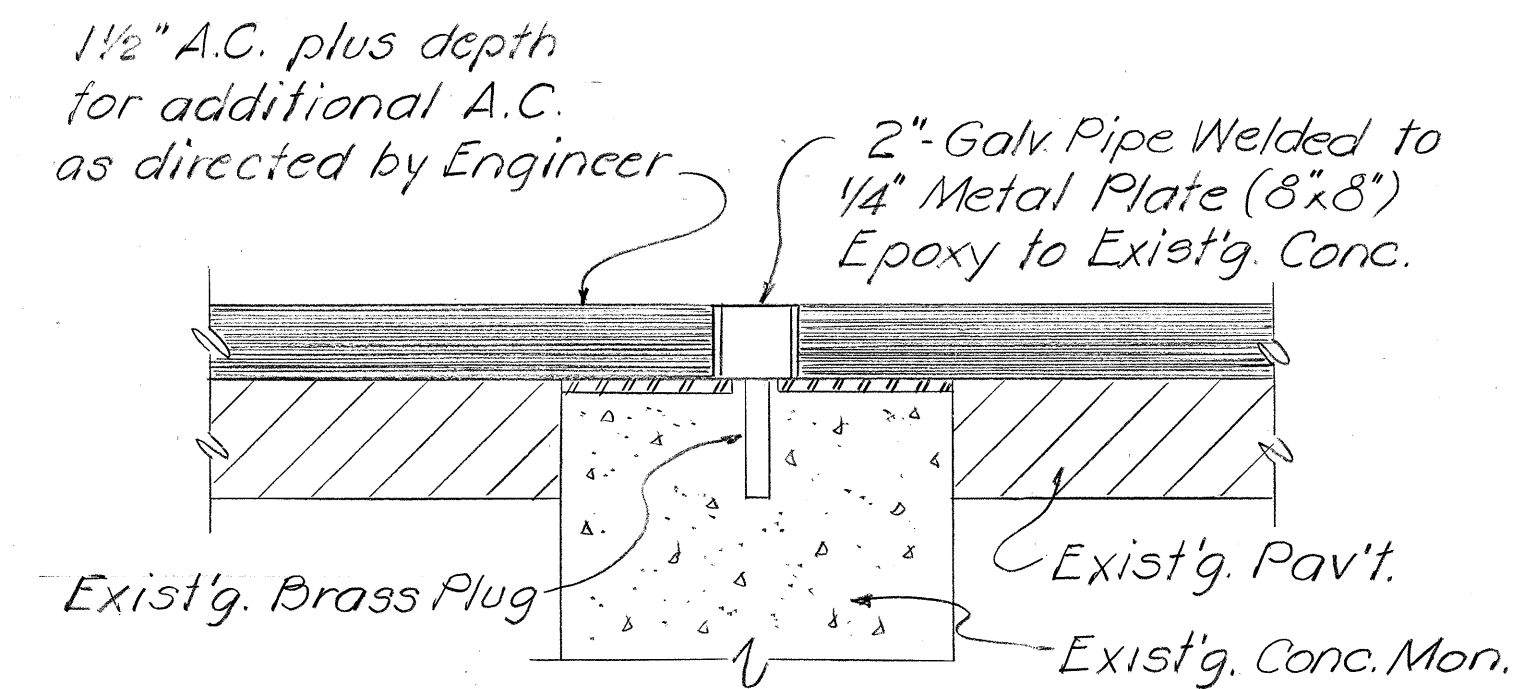


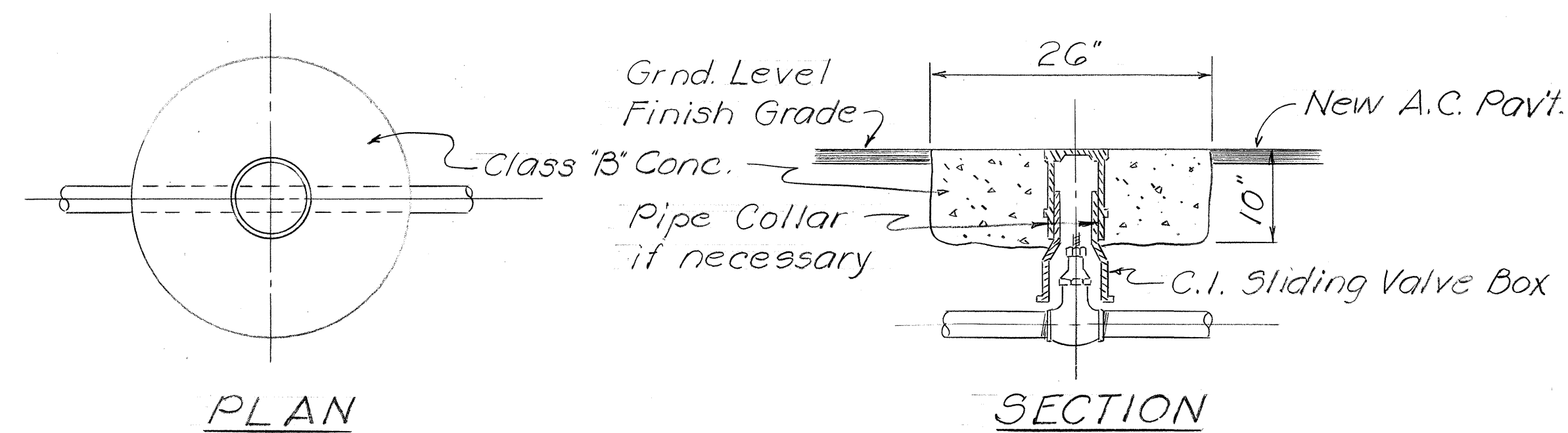
FED. ROAD DIST. NO.	STATE	PROJ. NO.	FISCAL YEAR	SHEET NO.	TOTAL SHEETS
HAWAII	HAW.	30AB-01-72M	1972	2	2



TYPICAL SECTION
Scale: 1/4" = 1'-0"



ADJUSTED MONUMENT
Scale: 3" = 1'-0"



ADJUSTED WATER VALVE BOX
Not to Scale

GENERAL NOTES

1. Prior to filling or resurfacing, the existing surface shall be cleaned as described in Section 310 of the Standard Specification. Payment shall be considered incidental to A.C. Pavement Mix V Item No. 401.0500
2. All holes, cracks and large depressions shall be filled and compacted with A.C. Mix V prior to resurfacing. Payment will be made under Item No. 401.0500
3. In general, the A.C. pavement overlay thickness shall be 1 1/2 inches unless otherwise directed by the Engineer or as indicated on the Plans.
4. Smooth riding connection shall be constructed at the beginning and the end of the project and all connecting approaches and at extra widenings, as required by the Engineer.
5. The contractor's attention is directed to Sub-Section 104.04 of the Standard Specifications concerning maintenance of traffic flow.
6. All centerline monuments shall be adjusted as shown on the plan. Payment will be made under Item 670.0100.
7. The shoulder shall be constructed in accordance with Section 665, Dressing of Shoulders of the Special Provisions.
8. The contractor shall remove all existing raised pavement markers prior to resurfacing. Payment incidental to 401.0500.

SURVEY PLOTTED BY	DATE
DRAWN BY	
DESIGNED BY	
QUANTITIES BY	
CHECKED BY	
ORIGINAL PLAN	
NOTE BOOK	
No.	

STATE OF HAWAII	
DEPARTMENT OF TRANSPORTATION	
LAND TRANSPORTATION FACILITIES DIVISION	
<u>TYPICAL SECTION, DETAIL,</u>	
<u>GENERAL NOTES</u>	
HONOAPIILANI HWY. RESURFACING	
VICINITY OF KANIAU ST. TOWARD MALA	
PROJ. NO 30AB-01-72M	
SCALE: AS NOTED	APR. 1972
SHEET No. 1 OF 1 SHEETS	