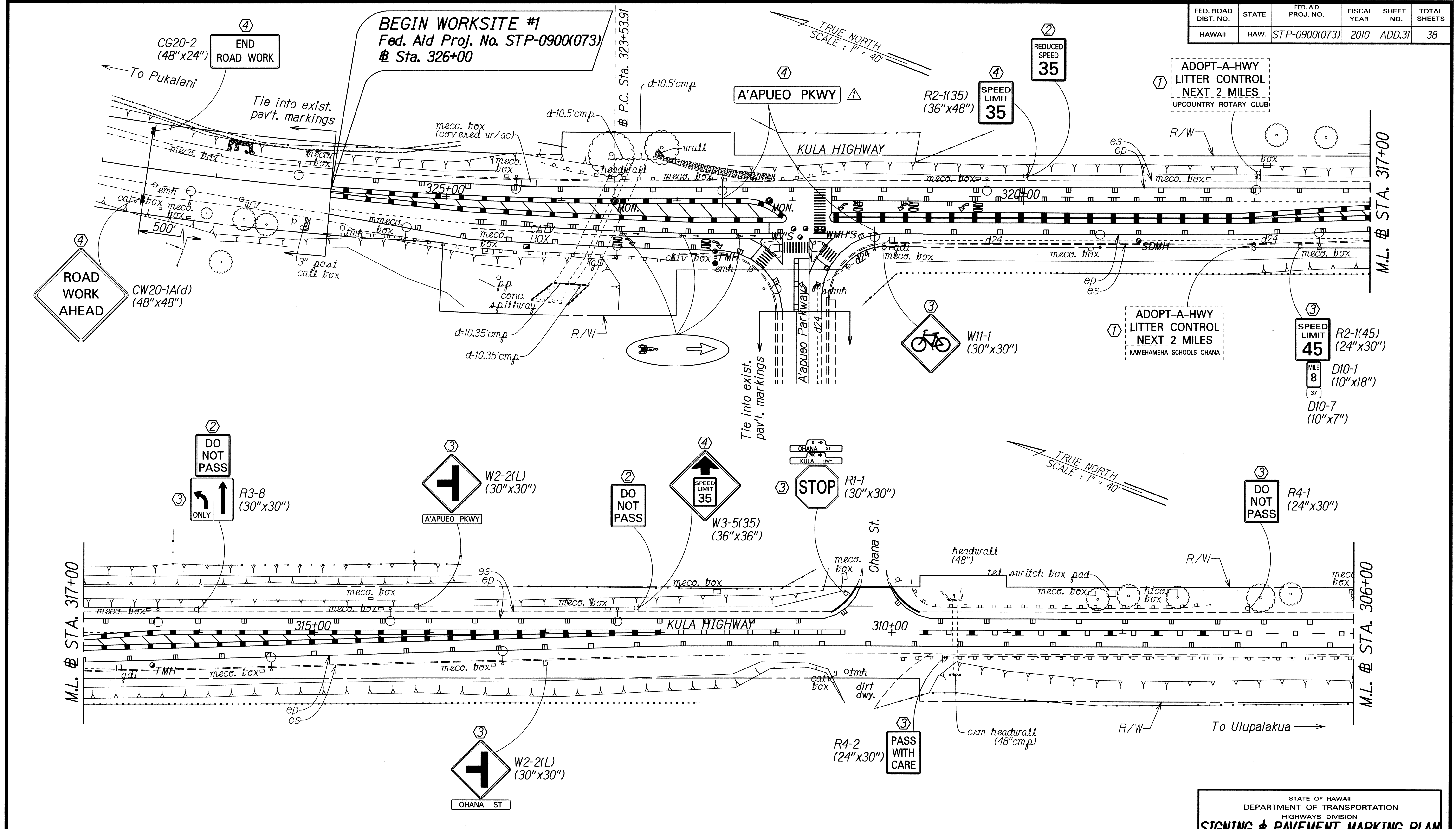


FED. ROAD DIST. NO.	STATE	FED. AID PROJ. NO.	FISCAL YEAR	SHEET NO.	TOTAL SHEETS
HAWAII	HAW.	STP-0900(073)	2010	ADD.31	38



ORIGINAL PLAN	DATE
DRAWN BY	
DESIGNED BY	
CHECKED BY	
NOTE BOOK	
DATE	
BY	
CHECKED BY	

DATE	REVISION
6-9-11	Added A'apueo Pkwy. sign.
6-9-11	Deleted work for painting A.C. curb.

- KEY:**
- ① Exist. Sign(s) & Post(s) to Remain
 - ② Remove Exist. Sign(s) & Post(s)
 - ③ Remove Exist. & Install New Sign(s) & Post(s)
 - ④ Install New Sign(s) & Post(s)

STATE OF HAWAII
DEPARTMENT OF TRANSPORTATION
HIGHWAYS DIVISION

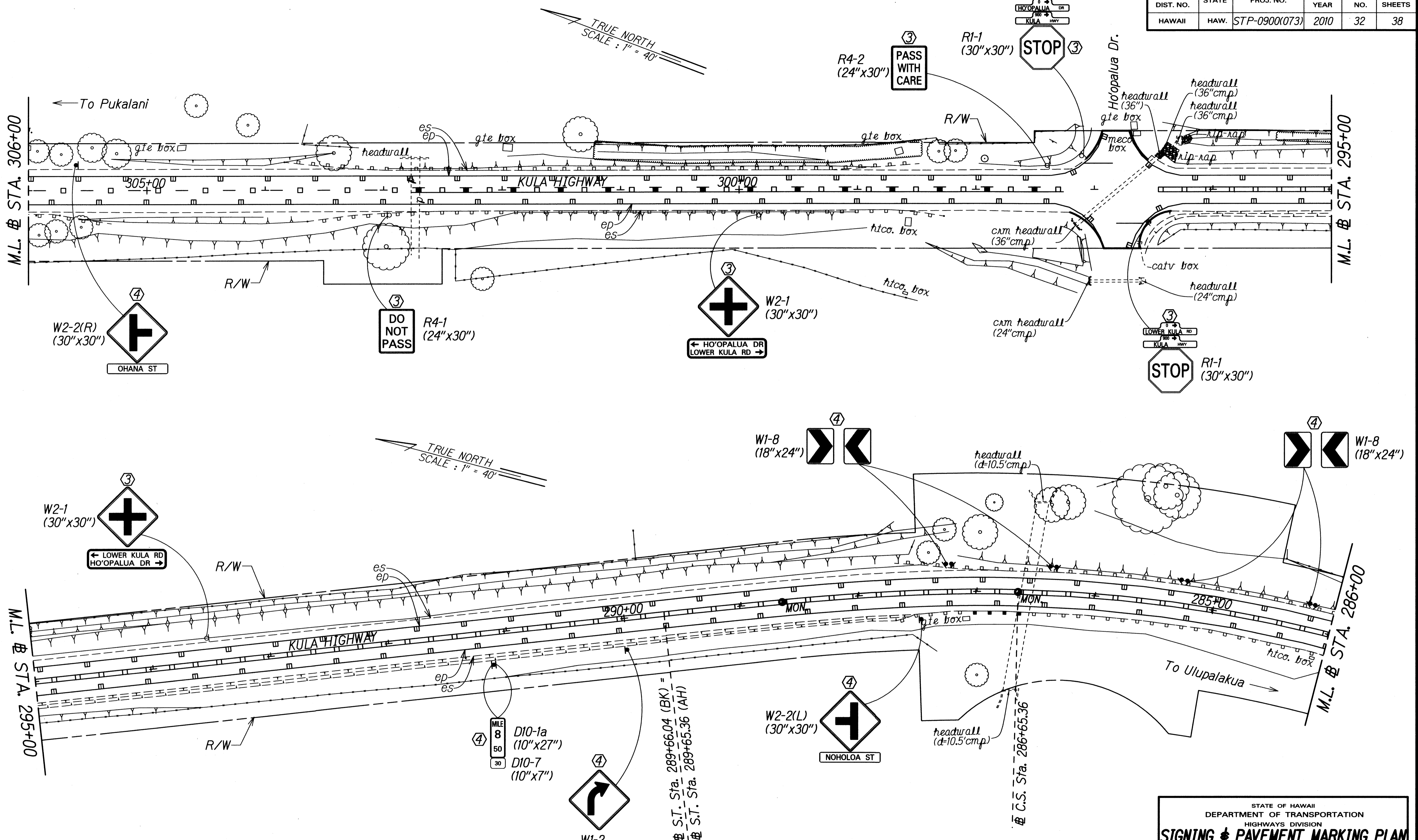
SIGNING & PAVEMENT MARKING PLAN

KULA HIGHWAY RESURFACING
Haakakai Bridge towards Old Lower Kula Rd. and
HONOAPIILANI HIGHWAY RESURFACING
Kapoli St. to Kaheawa Wind Farm Access Rd.
Federal-Aid Project No. STP-0900(073)

Scale: 1" = 40' Date: May, 2009

SHEET No. 1 OF 7 SHEETS

FED. ROAD DIST. NO.	STATE	FED. AID PROJ. NO.	FISCAL YEAR	SHEET NO.	TOTAL SHEETS
HAWAII	HAW.	STP-0900(073)	2010	32	38



SURVEY PLOTTED BY	DATE
DRAWN BY	
TRACED BY	
QUANTITIES BY	
CHECKED BY	
ORIGINAL PLAN	
NOTE BOOK	
DATE	
NO.	

- KEY:**
- ① Exist. Sign(s) & Post(s) to Remain
 - ② Remove Exist. Sign(s) & Post(s)
 - ③ Remove Exist. & Install New Sign(s) & Post(s)
 - ④ Install New Sign(s) & Post(s)

STATE OF HAWAII
DEPARTMENT OF TRANSPORTATION
HIGHWAYS DIVISION

SIGNING & PAVEMENT MARKING PLAN

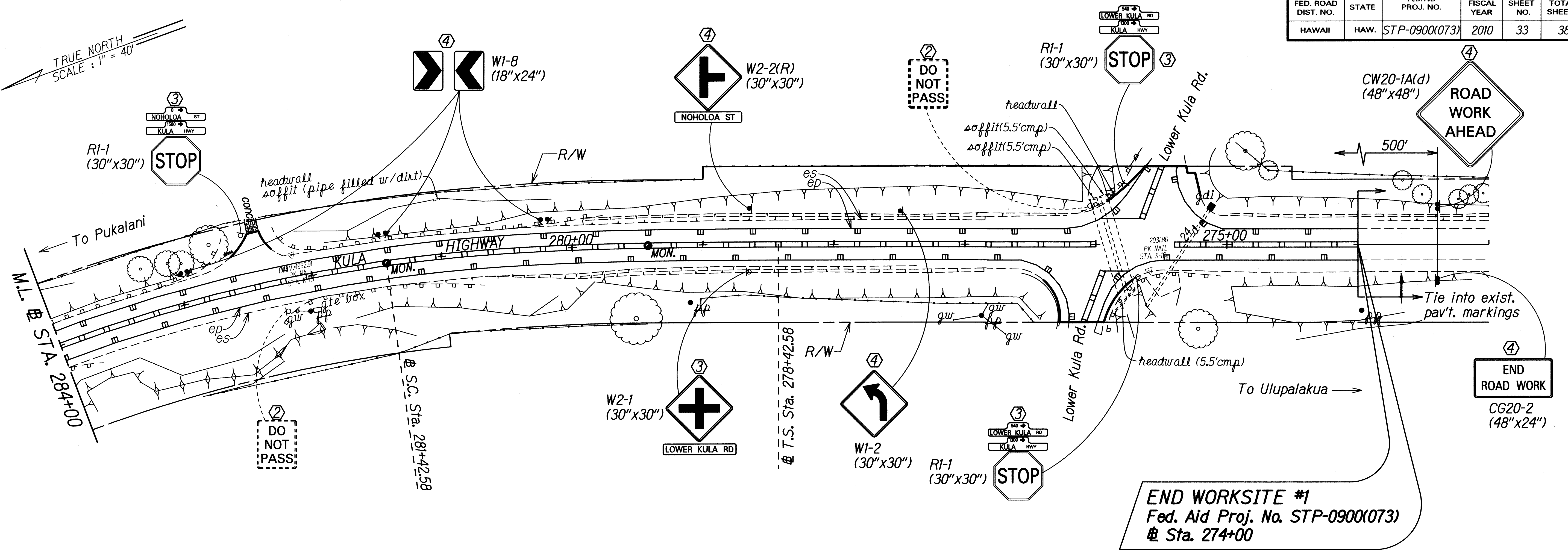
KULA HIGHWAY RESURFACING
Haakakai Bridge towards Old Lower Kula Rd. and
HONOAPIILANI HIGHWAY RESURFACING
Kapoli St. to Kaheawa Wind Farm Access Rd.
Federal-Aid Project No. STP-0900(073)

Scale: 1" = 40' Date: May, 2009

SHEET No. 2 OF 7 SHEETS

FED. ROAD DIST. NO.	STATE	FED. AID PROJ. NO.	FISCAL YEAR	SHEET NO.	TOTAL SHEETS
HAWAII	HAW.	STP-0900(073)	2010	33	38

TRUE NORTH
SCALE: 1" = 40'



END WORKSITE #1
 Fed. Aid Proj. No. STP-0900(073)
 @ Sta. 274+00

SURVEY PLOTTED BY	DATE
DRAWN BY	
TRACED BY	
QUANTITIES BY	
CHECKED BY	
ORIGINAL PLAN	
NOTE BOOK	
No.	

- KEY:**
- ① Exist. Sign(s) & Post(s) to Remain
 - ② Remove Exist. Sign(s) & Post(s)
 - ③ Remove Exist. & Install New Sign(s) & Post(s)
 - ④ Install New Sign(s) & Post(s)

STATE OF HAWAII
 DEPARTMENT OF TRANSPORTATION
 HIGHWAYS DIVISION

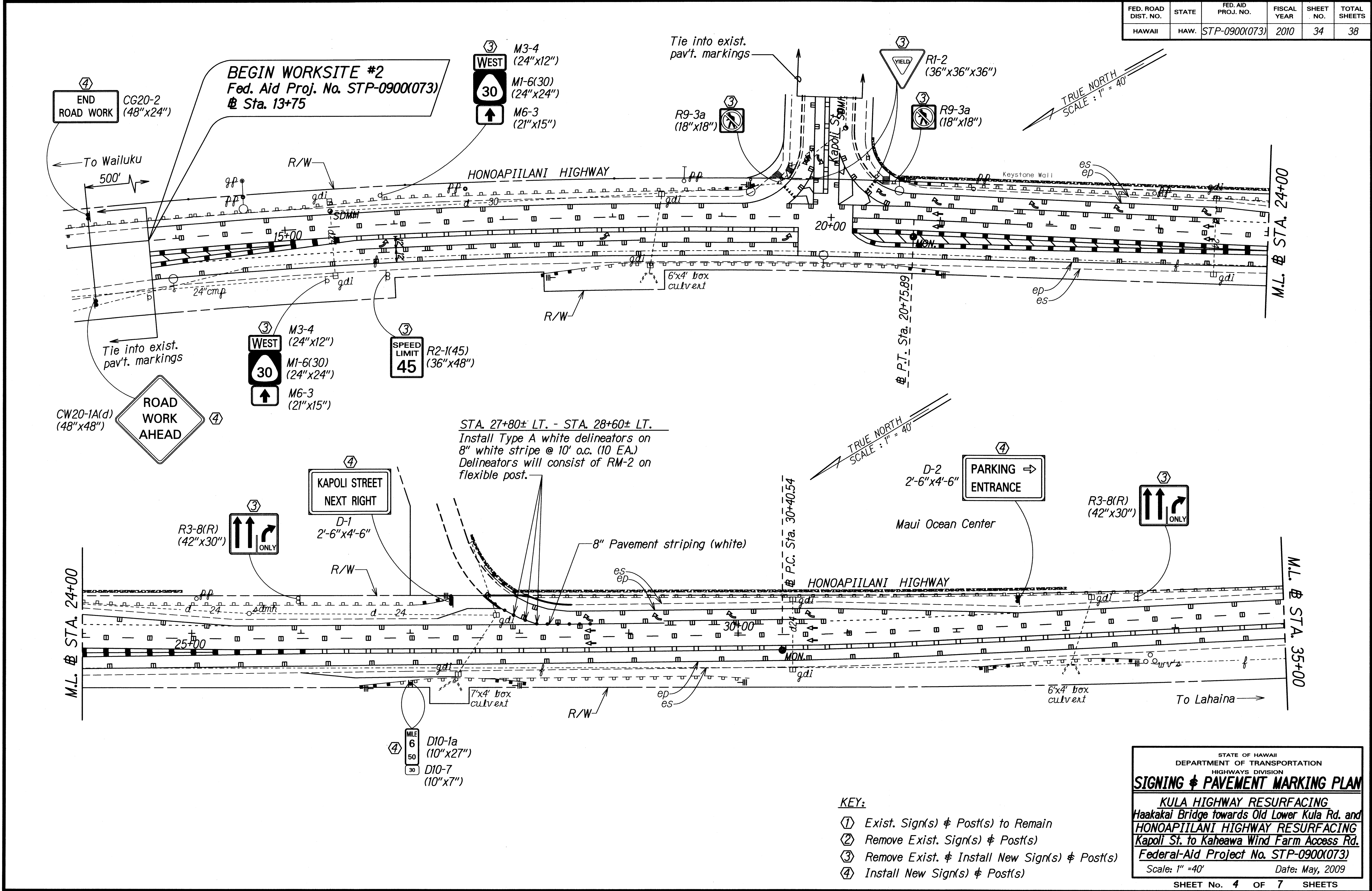
SIGNING & PAVEMENT MARKING PLAN

KULA HIGHWAY RESURFACING
 Haakakai Bridge towards Old Lower Kula Rd. and
HONOAPIILANI HIGHWAY RESURFACING
 Kapoli St. to Kaheawa Wind Farm Access Rd.
 Federal-Aid Project No. STP-0900(073)

Scale: 1" = 40' Date: May, 2009

SHEET No. 3 OF 7 SHEETS

FED. ROAD DIST. NO.	STATE	FED. AID PROJ. NO.	FISCAL YEAR	SHEET NO.	TOTAL SHEETS
HAWAII	HAW.	STP-0900(073)	2010	34	38



④ END ROAD WORK CG20-2 (48"x24")

BEGIN WORKSITE #2
Fed. Aid Proj. No. STP-0900(073)
@ Sta. 13+75

③ M3-4 (24"x12")
WEST
③ M1-6(30) (24"x24")
③ M6-3 (21"x15")

Tie into exist. pav't. markings

③ R1-2 (36"x36"x36")
YIELD
③ R9-3a (18"x18")

TRUE NORTH
SCALE: 1" = 40'

To Wailuku
500'

CW20-1A(d) (48"x48")
ROAD WORK AHEAD ④

③ M3-4 (24"x12")
WEST
③ M1-6(30) (24"x24")
③ M6-3 (21"x15")

③ SPEED LIMIT 45
R2-1(45) (36"x48")

STA. 27+80± LT. - STA. 28+60± LT.
Install Type A white delineators on 8" white stripe @ 10' o.c. (10 EA.)
Delineators will consist of RM-2 on flexible post.

④ KAPOLI STREET NEXT RIGHT
D-1 2'-6"x4'-6"

③ R3-8(R) (42"x30")
ONLY

TRUE NORTH
SCALE: 1" = 40'

D-2 2'-6"x4'-6"
PARKING ENTRANCE ④

③ R3-8(R) (42"x30")
ONLY

M.L. @ STA. 24+00

M.L. @ STA. 35+00

SURVEY PLOTTED BY	DATE
DRAWN BY	
TRACED BY	
QUANTITIES BY	
CHECKED BY	
ORIGINAL PLAN	
NOTE BOOK	
DATE	
NO.	

④ MILE 6 50
D10-1a (10"x27")
D10-7 (10"x7")

- KEY:**
- ① Exist. Sign(s) & Post(s) to Remain
 - ② Remove Exist. Sign(s) & Post(s)
 - ③ Remove Exist. & Install New Sign(s) & Post(s)
 - ④ Install New Sign(s) & Post(s)

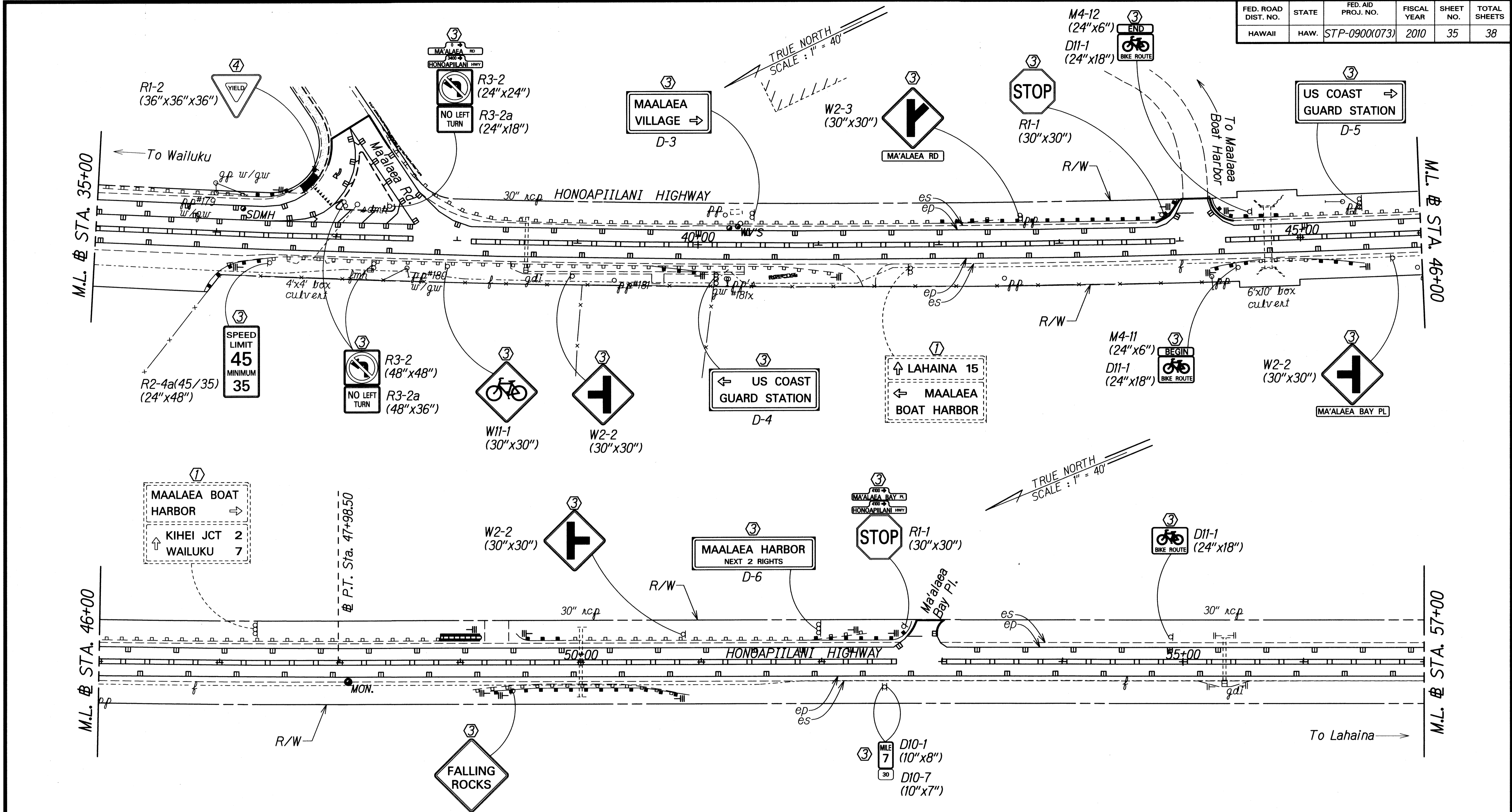
STATE OF HAWAII
DEPARTMENT OF TRANSPORTATION
HIGHWAYS DIVISION

SIGNING & PAVEMENT MARKING PLAN

KULA HIGHWAY RESURFACING
Haakakai Bridge towards Old Lower Kula Rd. and
HONOAPIILANI HIGHWAY RESURFACING
Kapoli St. to Kaheawa Wind Farm Access Rd.
Federal-Aid Project No. STP-0900(073)

Scale: 1" = 40' Date: May, 2009

FED. ROAD DIST. NO.	STATE	FED. AID PROJ. NO.	FISCAL YEAR	SHEET NO.	TOTAL SHEETS
HAWAII	HAW.	STP-0900(073)	2010	35	38



SURVEY PLOTTED BY	DATE
DRAWN BY	
TRACED BY	
NOTE BOOK	
QUANTITIES BY	
CHECKED BY	
N. X. 0999	

- KEY:**
- ① Exist. Sign(s) & Post(s) to Remain
 - ② Remove Exist. Sign(s) & Post(s)
 - ③ Remove Exist. & Install New Sign(s) & Post(s)
 - ④ Install New Sign(s) & Post(s)

STATE OF HAWAII
DEPARTMENT OF TRANSPORTATION
HIGHWAYS DIVISION

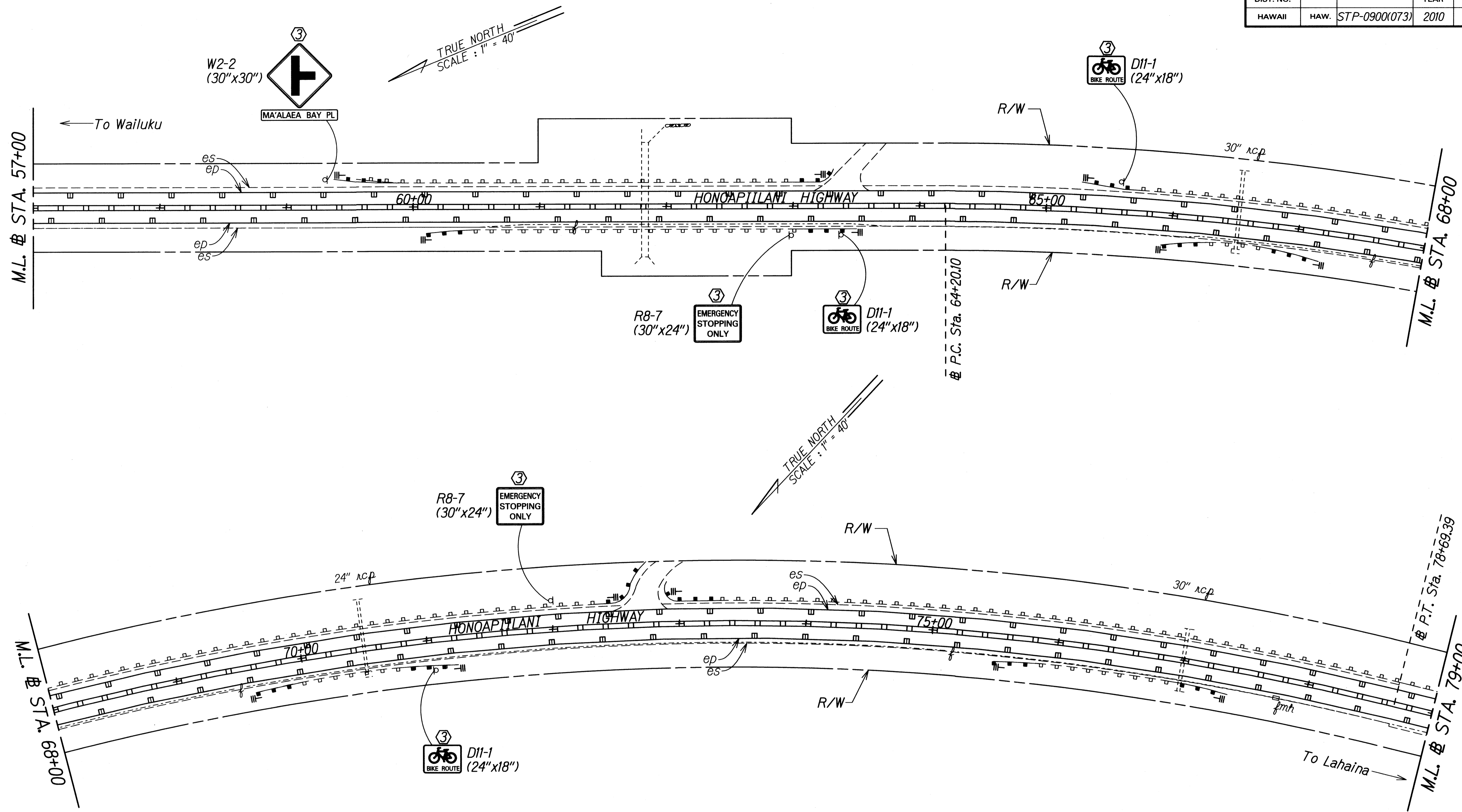
SIGNING & PAVEMENT MARKING PLAN

KULA HIGHWAY RESURFACING
Haakakai Bridge towards Old Lower Kula Rd. and
HONOAPIILANI HIGHWAY RESURFACING
Kapoli St. to Kaheawa Wind Farm Access Rd.
Federal-Aid Project No. STP-0900(073)

Scale: 1" = 40' Date: May, 2009

SHEET No. 5 OF 7 SHEETS

FED. ROAD DIST. NO.	STATE	FED. AID PROJ. NO.	FISCAL YEAR	SHEET NO.	TOTAL SHEETS
HAWAII	HAW.	STP-0900(073)	2010	36	38



SURVEY PLOTTED BY	DATE
DRAWN BY	
TRACED BY	
NOTE BOOK	
QUANTITIES BY	
CHECKED BY	

- KEY:**
- ① Exist. Sign(s) & Post(s) to Remain
 - ② Remove Exist. Sign(s) & Post(s)
 - ③ Remove Exist. & Install New Sign(s) & Post(s)
 - ④ Install New Sign(s) & Post(s)

STATE OF HAWAII
DEPARTMENT OF TRANSPORTATION
HIGHWAYS DIVISION

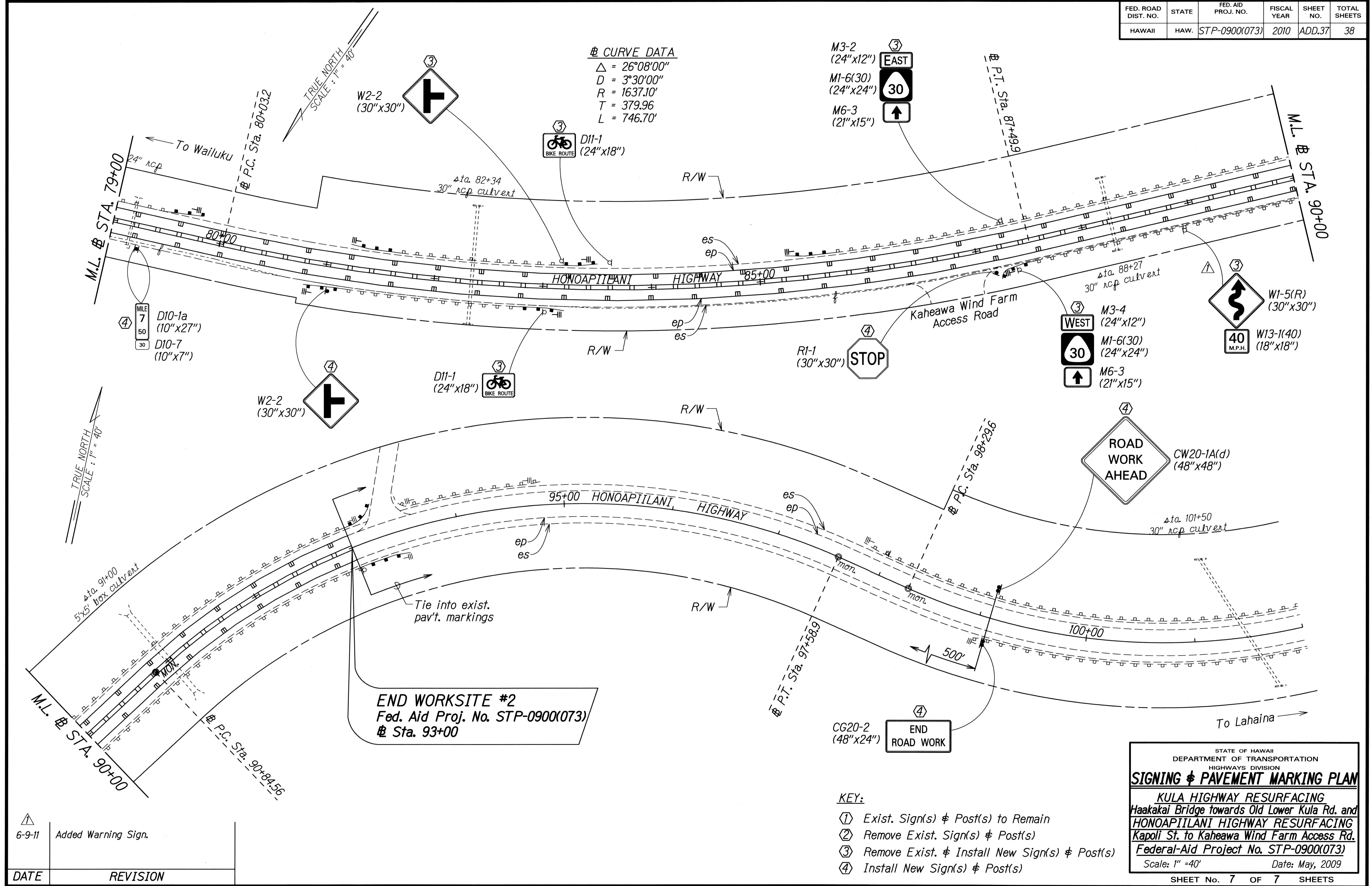
SIGNING & PAVEMENT MARKING PLAN

KULA HIGHWAY RESURFACING
Haakakai Bridge towards Old Lower Kula Rd. and
HONOAPIILANI HIGHWAY RESURFACING
Kapoli St. to Kaheawa Wind Farm Access Rd.
Federal-Aid Project No. STP-0900(073)

Scale: 1" = 40' Date: May, 2009

SHEET No. 6 OF 7 SHEETS

FED. ROAD DIST. NO.	STATE	FED. AID PROJ. NO.	FISCAL YEAR	SHEET NO.	TOTAL SHEETS
HAWAII	HAW.	STP-0900(073)	2010	ADD.37	38



DATE	REVISION
6-9-11	Added Warning Sign.

DATE	REVISION
6-9-11	Added Warning Sign.

END WORKSITE #2
 Fed. Aid Proj. No. STP-0900(073)
 @ Sta. 93+00

- KEY:**
- ① Exist. Sign(s) & Post(s) to Remain
 - ② Remove Exist. Sign(s) & Post(s)
 - ③ Remove Exist. & Install New Sign(s) & Post(s)
 - ④ Install New Sign(s) & Post(s)

STATE OF HAWAII
 DEPARTMENT OF TRANSPORTATION
 HIGHWAYS DIVISION

SIGNING & PAVEMENT MARKING PLAN

KULA HIGHWAY RESURFACING
 Haakakai Bridge towards Old Lower Kula Rd. and
HONOAPIILANI HIGHWAY RESURFACING
 Kapoli St. to Kaheawa Wind Farm Access Rd.
 Federal-Aid Project No. STP-0900(073)

Scale: 1" = 40' Date: May, 2009

SHEET No. 7 OF 7 SHEETS