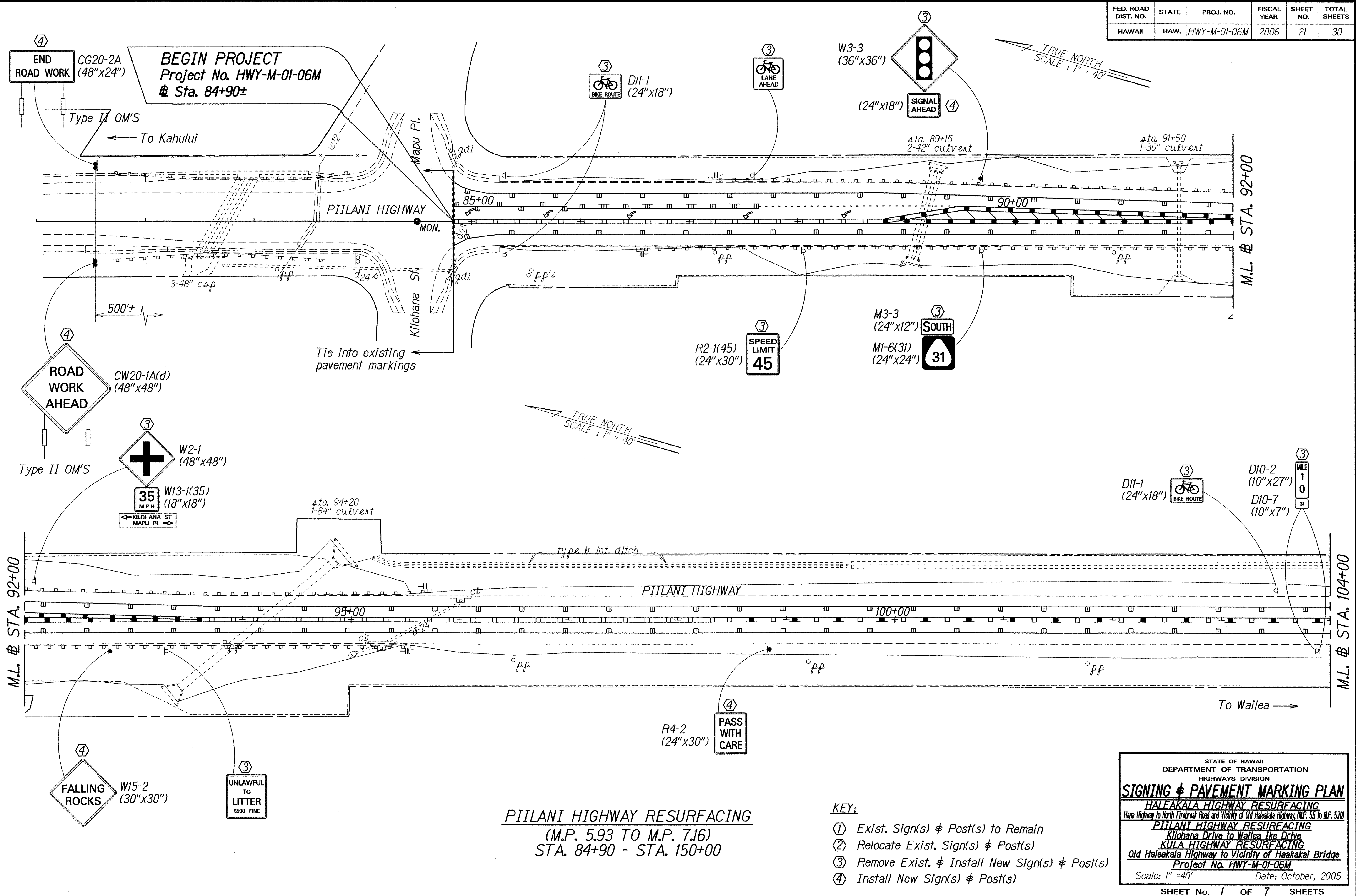


FED. ROAD DIST. NO.	STATE	PROJ. NO.	FISCAL YEAR	SHEET NO.	TOTAL SHEETS
HAWAII	HAW.	HWY-M-01-06M	2006	21	30



SURVEY PLOTTED BY	DATE
DRAWN BY	
TRACED BY	
NOTE BOOK	
QUANTITIES BY	
CHECKED BY	

PIILANI HIGHWAY RESURFACING
(M.P. 5.93 TO M.P. 7.16)
STA. 84+90 - STA. 150+00

- KEY:**
- ① Exist. Sign(s) & Post(s) to Remain
 - ② Relocate Exist. Sign(s) & Post(s)
 - ③ Remove Exist. & Install New Sign(s) & Post(s)
 - ④ Install New Sign(s) & Post(s)

STATE OF HAWAII
DEPARTMENT OF TRANSPORTATION
HIGHWAYS DIVISION

SIGNING & PAVEMENT MARKING PLAN

HALEAKALA HIGHWAY RESURFACING
Hana Highway to North Firebreak Road and Vicinity of Old Haleakala Highway, (M.P. 5.5 to M.P. 5.70)

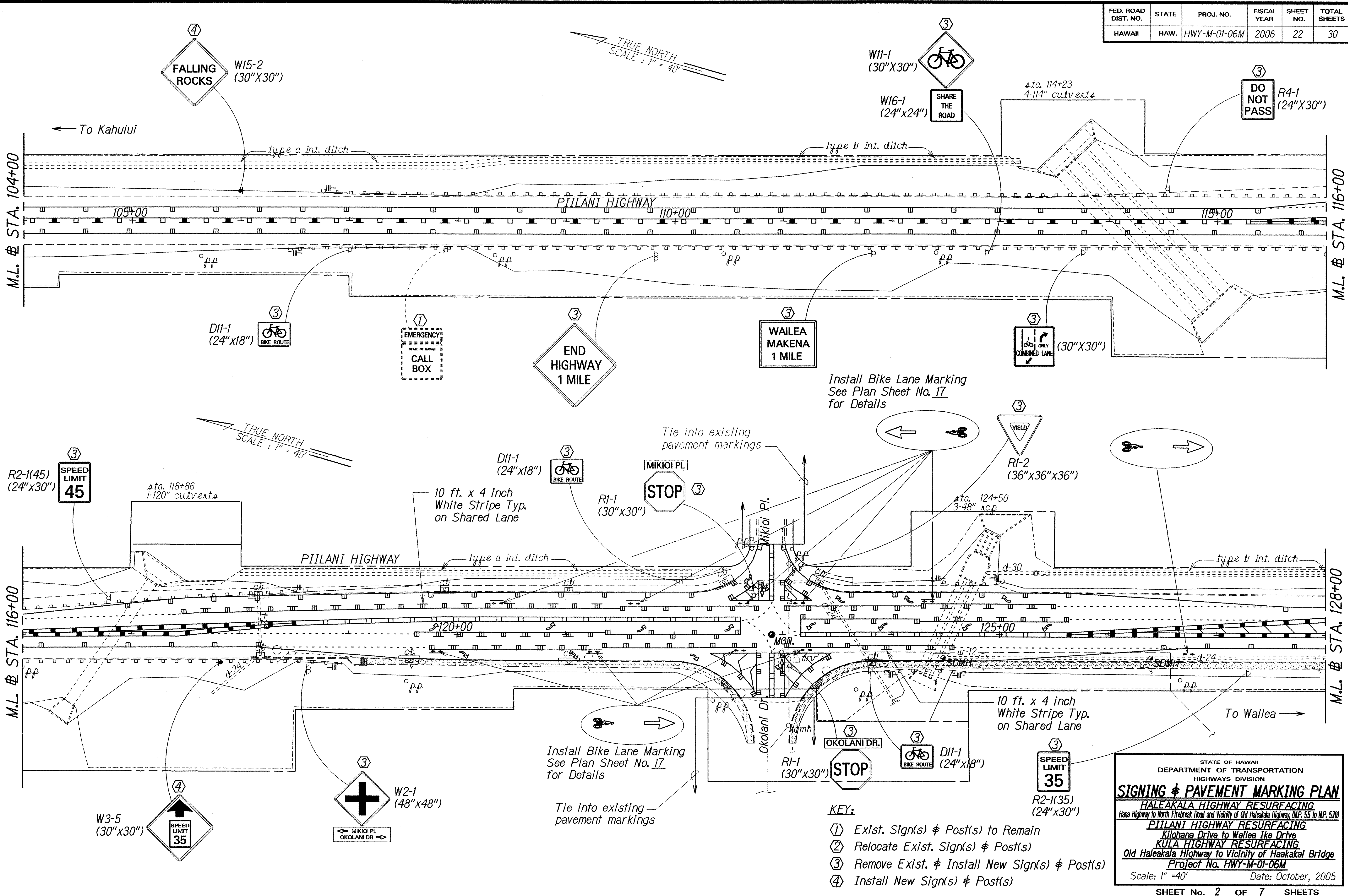
PIILANI HIGHWAY RESURFACING
Kilohana Drive to Wailea Ike Drive

KULA HIGHWAY RESURFACING
Old Haleakala Highway to Vicinity of Haakakala Bridge

Project No. HWY-M-01-06M
Scale: 1" = 40' Date: October, 2005

SHEET No. 1 OF 7 SHEETS

FED. ROAD DIST. NO.	STATE	PROJ. NO.	FISCAL YEAR	SHEET NO.	TOTAL SHEETS
HAWAII	HAW.	HWY-M-01-06M	2006	22	30



SURVEY PLOTTED BY	DATE
DESIGNED BY	10/2005
NOTE BOOK	
QUANTITIES BY	
CHECKED BY	

STATE OF HAWAII
DEPARTMENT OF TRANSPORTATION
HIGHWAYS DIVISION

SIGNING & PAVEMENT MARKING PLAN

HALEAKALA HIGHWAY RESURFACING
Hana Highway to North Firebreak Road and Vicinity of Old Haleakala Highway, U.M.P. 5.5 to M.P. 5.70

PIILANI HIGHWAY RESURFACING
Kilohana Drive to Wailea Ike Drive

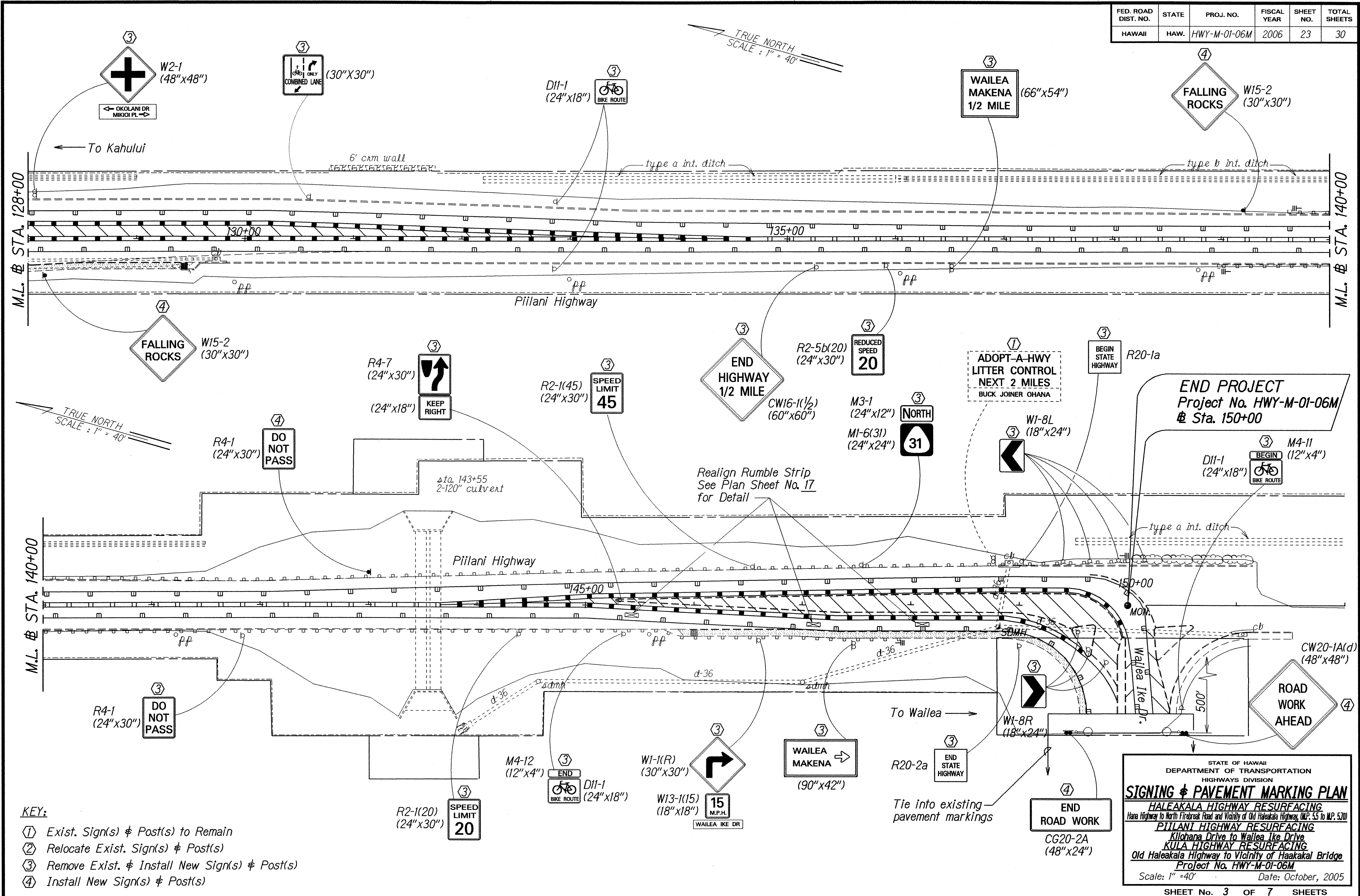
KULA HIGHWAY RESURFACING
Old Haleakala Highway to Vicinity of Haakakai Bridge

Project No. HWY-M-01-06M
Scale: 1" = 40' Date: October, 2005

SHEET No. 2 OF 7 SHEETS

- KEY:**
- ① Exist. Sign(s) & Post(s) to Remain
 - ② Relocate Exist. Sign(s) & Post(s)
 - ③ Remove Exist. & Install New Sign(s) & Post(s)
 - ④ Install New Sign(s) & Post(s)

FED. ROAD DIST. NO.	STATE	PROJ. NO.	FISCAL YEAR	SHEET NO.	TOTAL SHEETS
HAWAII	HAW.	HWY-M-01-06M	2006	23	30



- KEY:**
- ① Exist. Sign(s) & Post(s) to Remain
 - ② Relocate Exist. Sign(s) & Post(s)
 - ③ Remove Exist. & Install New Sign(s) & Post(s)
 - ④ Install New Sign(s) & Post(s)

STATE OF HAWAII
DEPARTMENT OF TRANSPORTATION
HIGHWAYS DIVISION

SIGNING & PAVEMENT MARKING PLAN

HALEAKALA HIGHWAY RESURFACING
Hana Highway to North Firebreak Road and Vicinity of Old Haleakala Highway, (M.P. 5.5 to M.P. 5.70)

PIILANI HIGHWAY RESURFACING
Kilohana Drive to Wailea Ike Drive

KULA HIGHWAY RESURFACING
Old Haleakala Highway to Vicinity of Haakakal Bridge

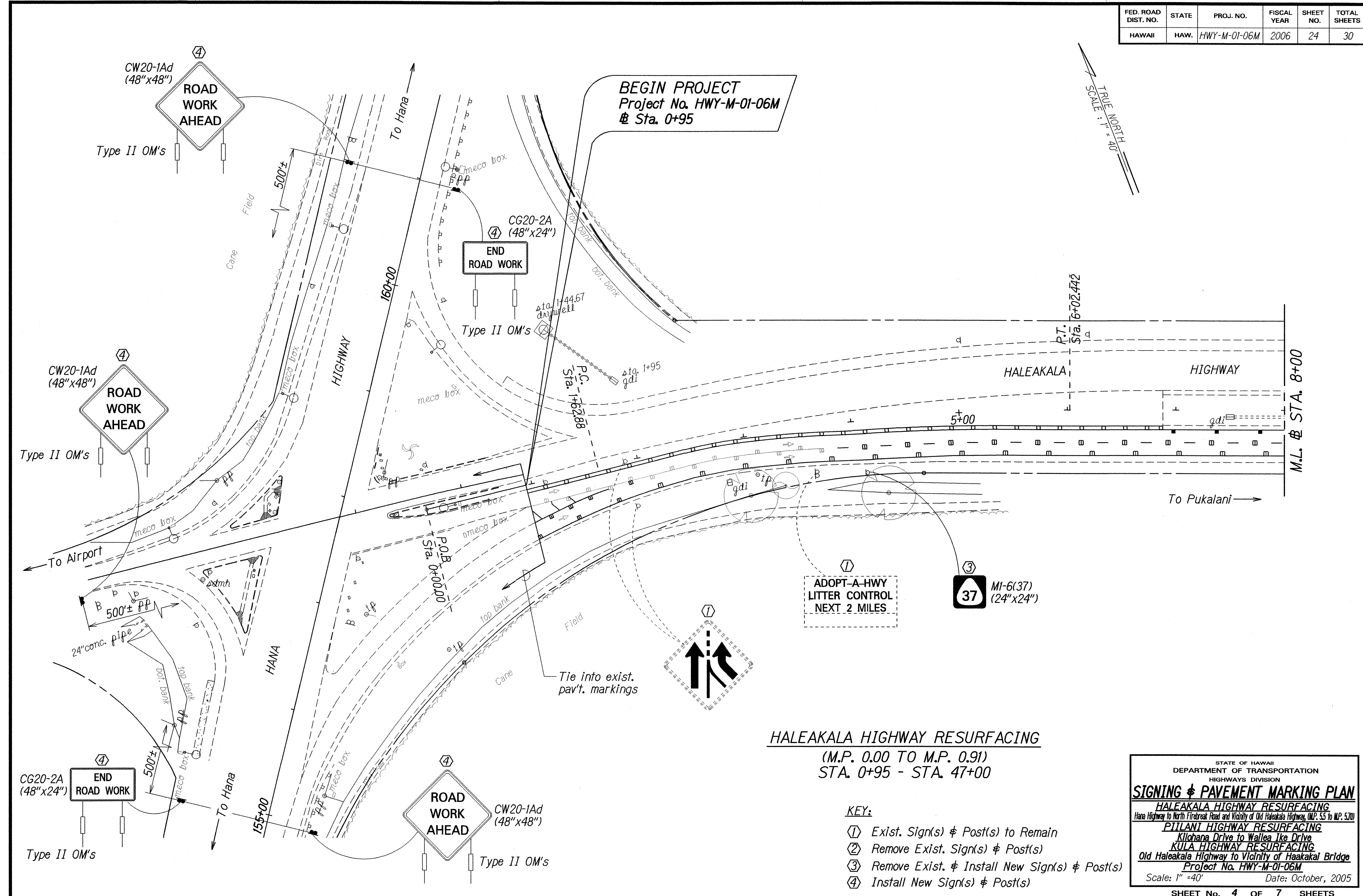
Project No. HWY-M-01-06M

Scale: 1" = 40' Date: October, 2005

SHEET No. 3 OF 7 SHEETS

DATE: 10/20/05
SURVEY PLOTTED BY: [blank]
DRAWN BY: [blank]
DESIGNED BY: [blank]
NOTE BOOK: [blank]
QUANTITIES BY: [blank]
CHECKED BY: [blank]

FED. ROAD DIST. NO.	STATE	PROJ. NO.	FISCAL YEAR	SHEET NO.	TOTAL SHEETS
HAWAII	HAW.	HWY-M-01-06M	2006	24	30



DATE	10/25/05
SURVEY PLOTTED BY	
DRAWN BY	
NOTE BOOK DESIGNED BY	
QUANTITIES BY	
CHECKED BY	

HALEAKALA HIGHWAY RESURFACING
(M.P. 0.00 TO M.P. 0.91)
STA. 0+95 - STA. 47+00

- KEY:**
- ① Exist. Sign(s) & Post(s) to Remain
 - ② Remove Exist. Sign(s) & Post(s)
 - ③ Remove Exist. & Install New Sign(s) & Post(s)
 - ④ Install New Sign(s) & Post(s)

STATE OF HAWAII
DEPARTMENT OF TRANSPORTATION
HIGHWAYS DIVISION

SIGNING & PAVEMENT MARKING PLAN

HALEAKALA HIGHWAY RESURFACING
Hana Highway to North Firebreak Road and Vicinity of Old Haleakala Highway (M.P. 5.5 to M.P. 5.70)

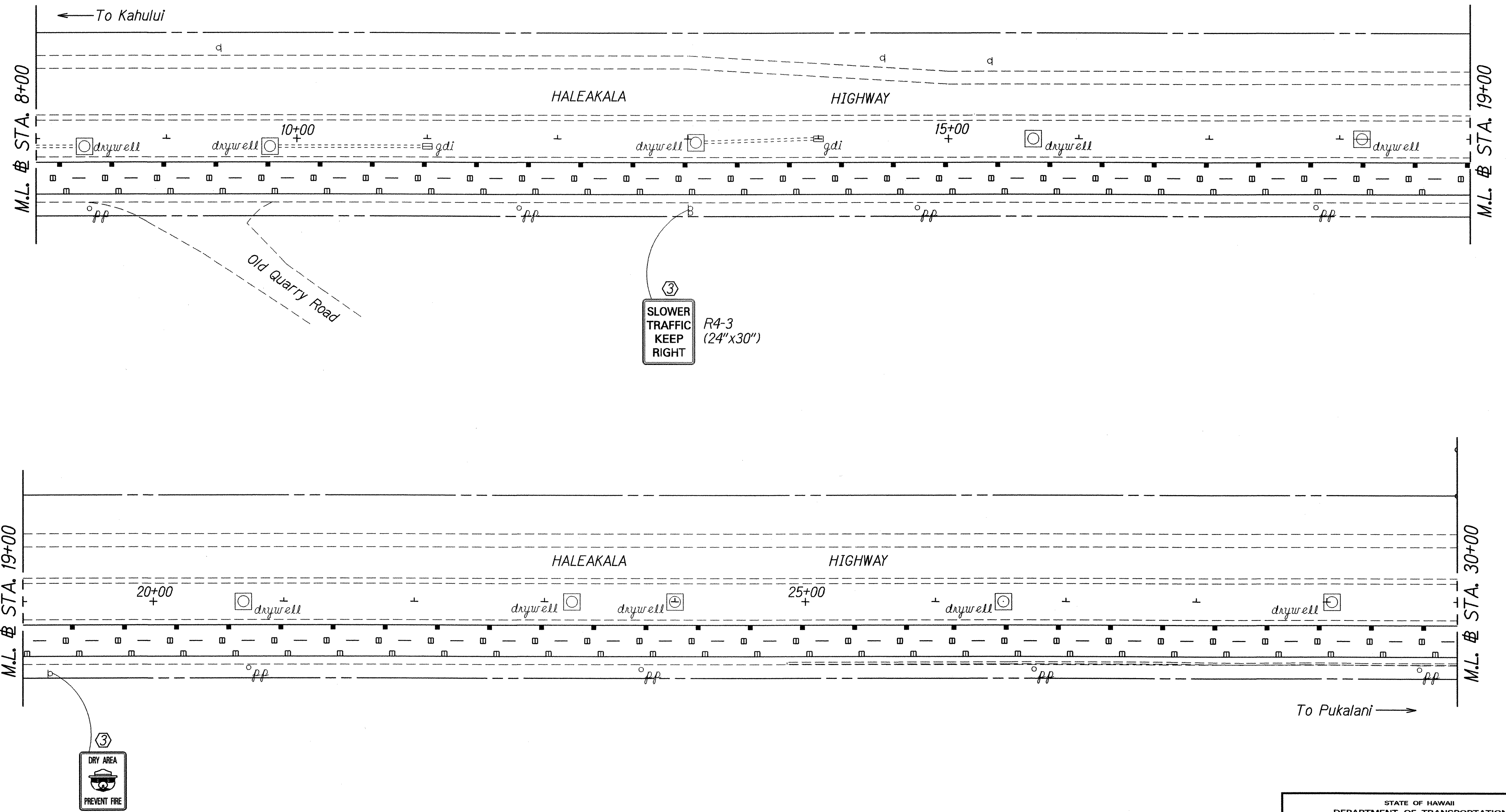
PILANI HIGHWAY RESURFACING
Kilohana Drive to Wailea Ike Drive

KULA HIGHWAY RESURFACING
Old Haleakala Highway to Vicinity of Haakakal Bridge

Project No. HWY-M-01-06M
Scale: 1" = 40' Date: October, 2005

SHEET No. 4 OF 7 SHEETS

FED. ROAD DIST. NO.	STATE	PROJ. NO.	FISCAL YEAR	SHEET NO.	TOTAL SHEETS
HAWAII	HAW.	HWY-M-01-06M	2006	25	30



ORIGINAL PLAN	DATE
DESIGNED BY	10/2005
DESIGNED BY	
QUANTITIES BY	
CHECKED BY	

- KEY:**
- ① Exist. Sign(s) & Post(s) to Remain
 - ② Remove Exist. Sign(s) & Post(s)
 - ③ Remove Exist. & Install New Sign(s) & Post(s)
 - ④ Install New Sign(s) & Post(s)

STATE OF HAWAII
DEPARTMENT OF TRANSPORTATION
HIGHWAYS DIVISION

SIGNING & PAVEMENT MARKING PLAN

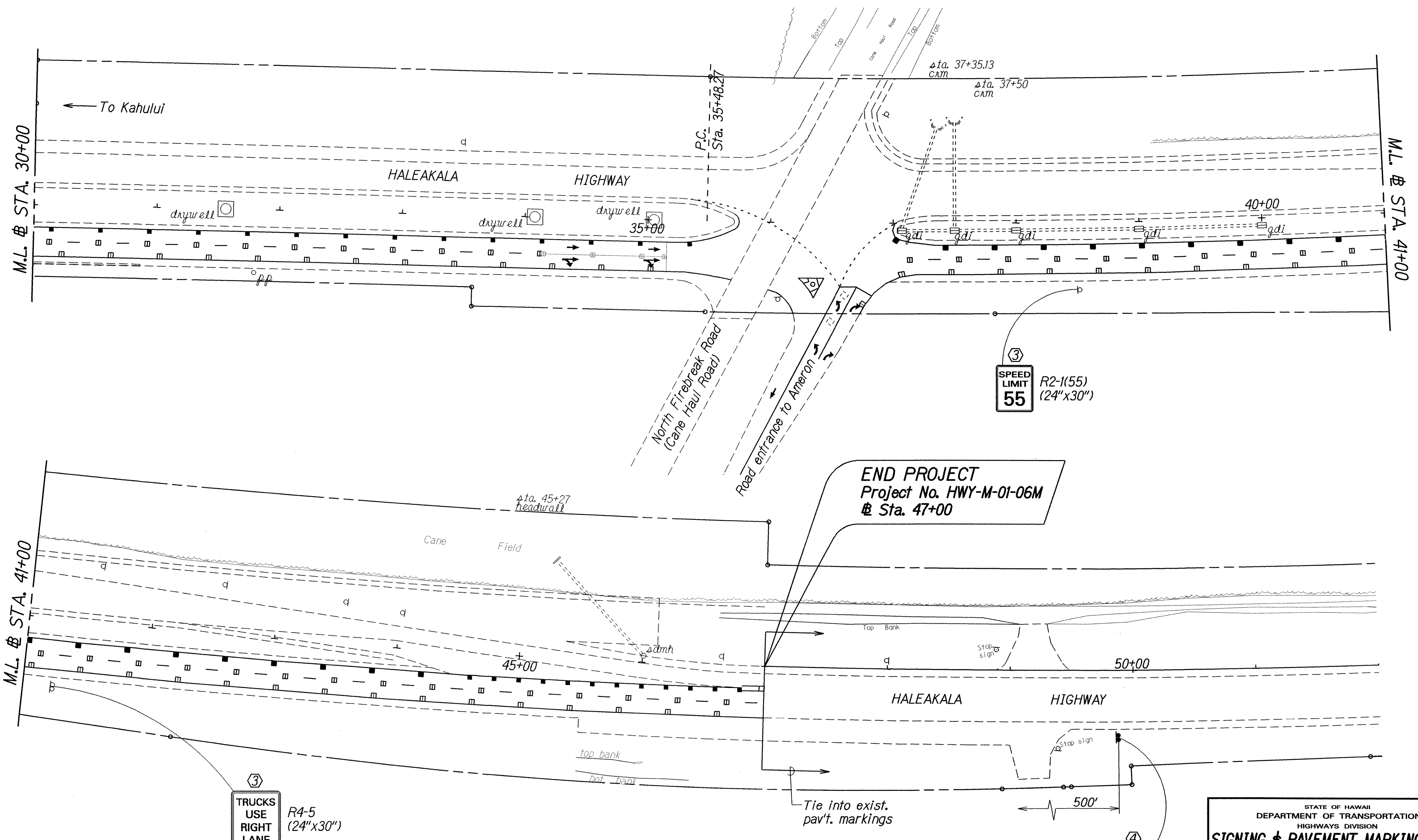
HALEAKALA HIGHWAY RESURFACING
Hana Highway to North Firebreak Road and Vicinity of Old Haleakala Highway, (M.P. 5.5 to M.P. 5.70)

PILANI HIGHWAY RESURFACING
Kilohana Drive to Wailea Ike Drive

KULA HIGHWAY RESURFACING
Old Haleakala Highway to Vicinity of Haakakal Bridge

Project No. HWY-M-01-06M
Scale: 1" = 40' Date: October, 2005

FED. ROAD DIST. NO.	STATE	PROJ. NO.	FISCAL YEAR	SHEET NO.	TOTAL SHEETS
HAWAII	HAW.	HWY-M-01-06M	2006	26	30



- KEY:**
- ① Exist. Sign(s) & Post(s) to Remain
 - ② Remove Exist. Sign(s) & Post(s)
 - ③ Remove Exist. & Install New Sign(s) & Post(s)
 - ④ Install New Sign(s) & Post(s)

ORIGINAL PLAN	DATE
SURVEY PLOTTED BY	10/2005
DRAWN BY	
NOTE BOOK	
DESIGNED BY	
QUANTITIES BY	
CHECKED BY	

STATE OF HAWAII
DEPARTMENT OF TRANSPORTATION
HIGHWAYS DIVISION

SIGNING & PAVEMENT MARKING PLAN

HALEAKALA HIGHWAY RESURFACING
Hana Highway to North Firebreak Road and Vicinity of Old Haleakala Highway, (M.P. 55 to M.P. 57)

PIILANI HIGHWAY RESURFACING
Kilohana Drive to Wailea Ike Drive

KULA HIGHWAY RESURFACING
Old Haleakala Highway to Vicinity of Haakakal Bridge

Project No. HWY-M-01-06M
Scale: 1" = 40' Date: October, 2005

