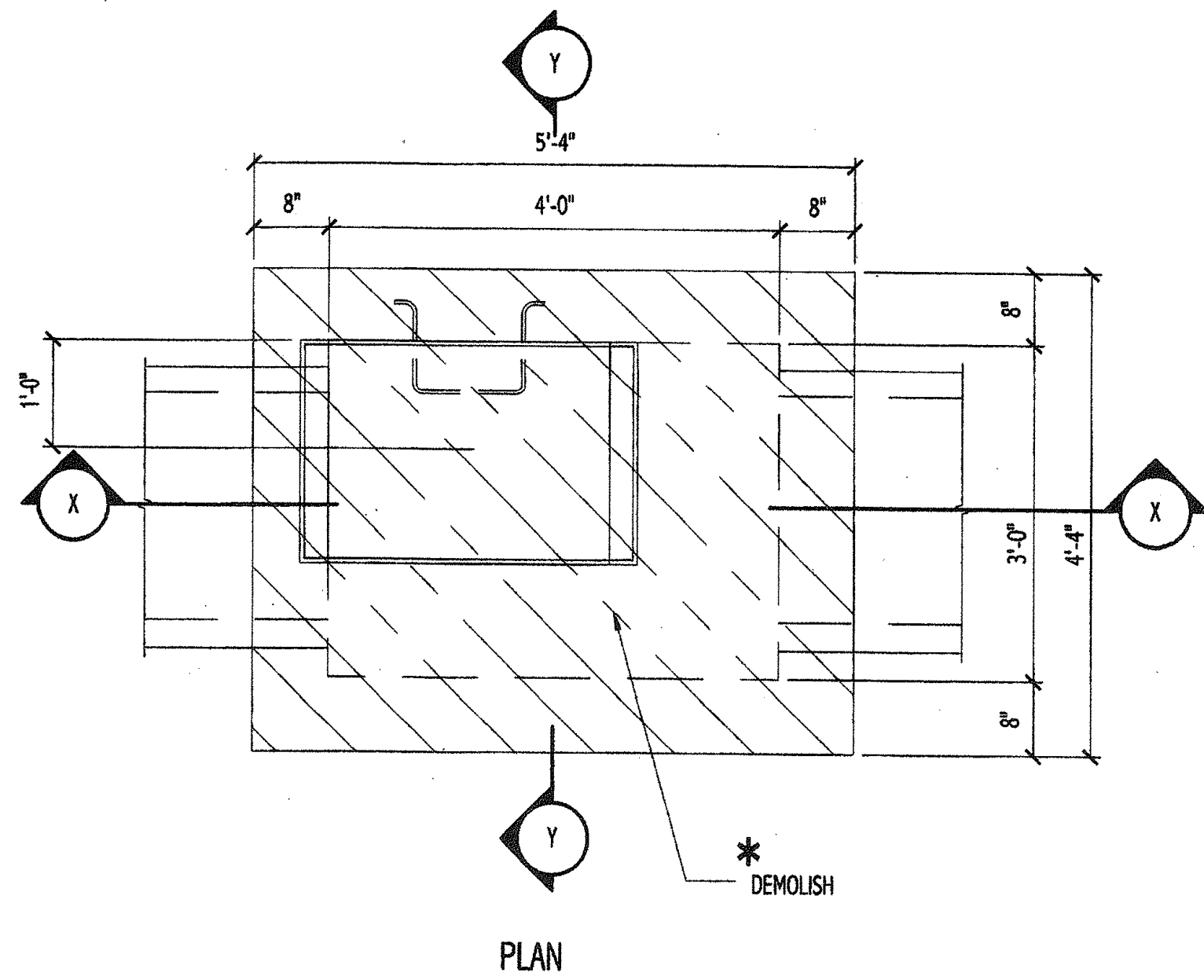
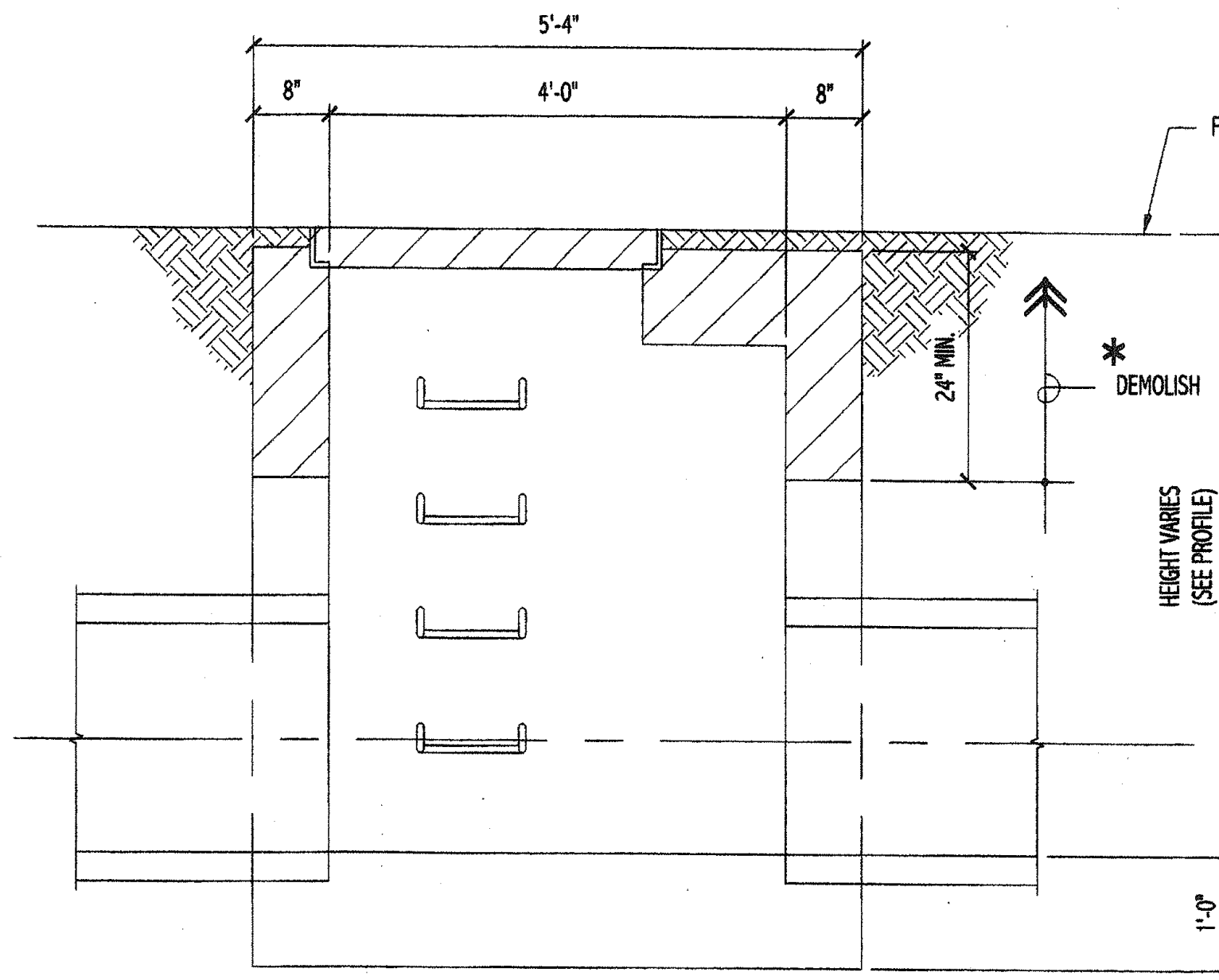


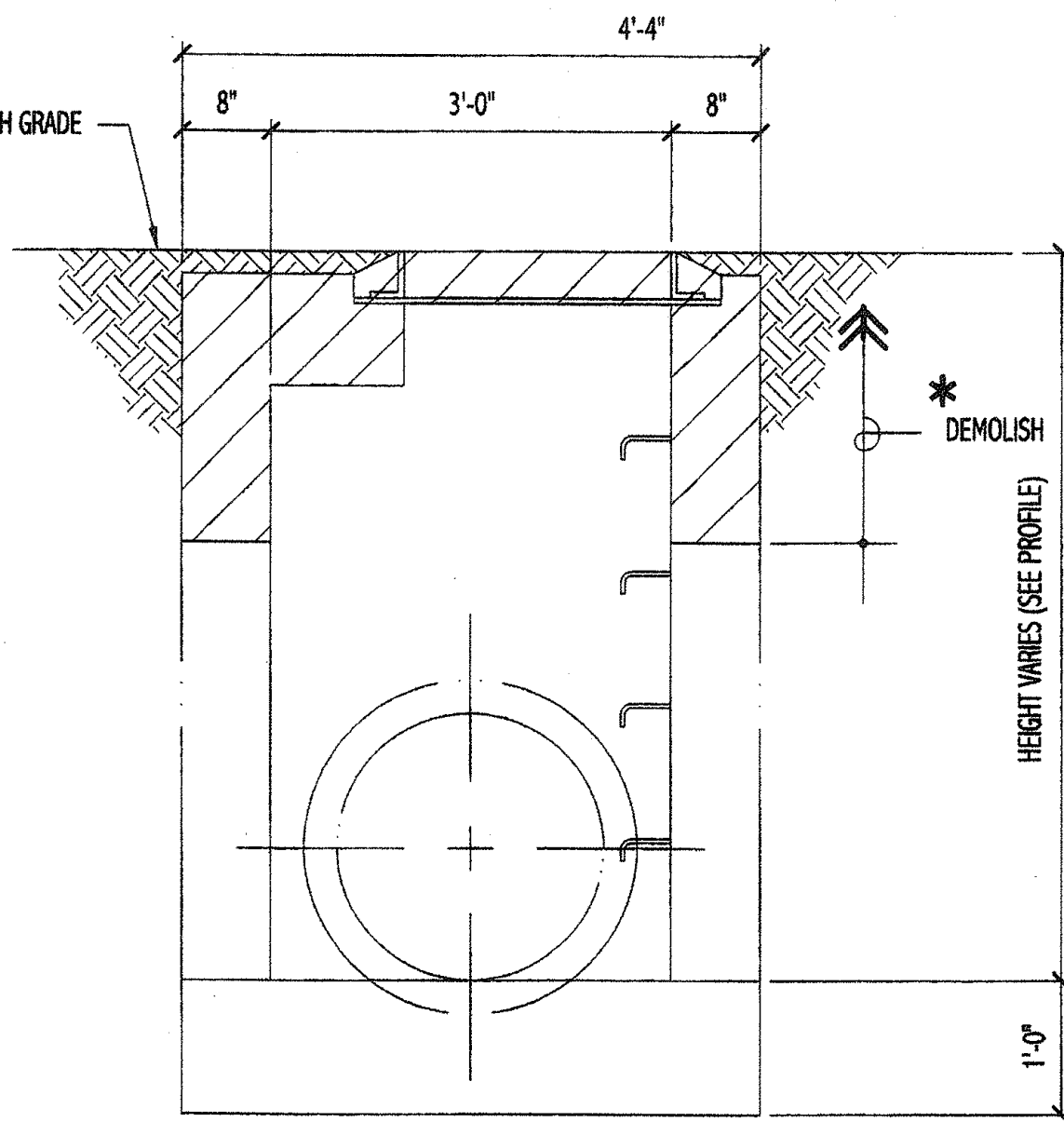
FED. ROAD DIST. NO.	STATE	PROJ. NO.	FISCAL YEAR	SHEET NO.	TOTAL SHEETS
HAWAII	HAW.	HWY-M-04-00	2002	45	63



- \* DEMOLITION NOTES**
1. SAW-CUT CONCRETE WALLS OF EXISTING GRATED DROP INLET 1" (ON EACH SIDE WALL) PRIOR TO DEMOLISHING.
  2. DEMOLISH CONCRETE AS REQUIRED WITHOUT DAMAGING EXISTING VERTICAL REINFORCING OF WALL.

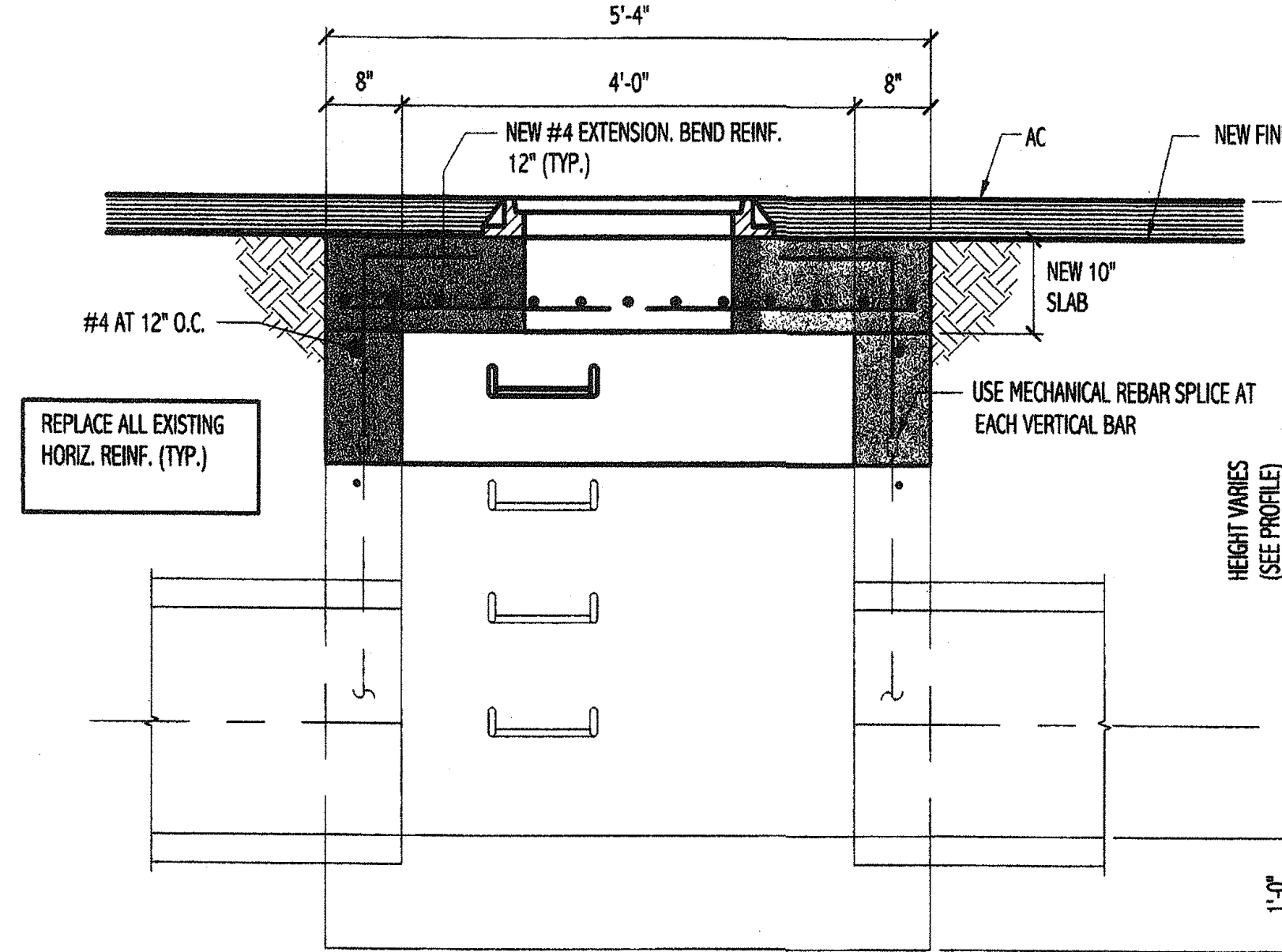
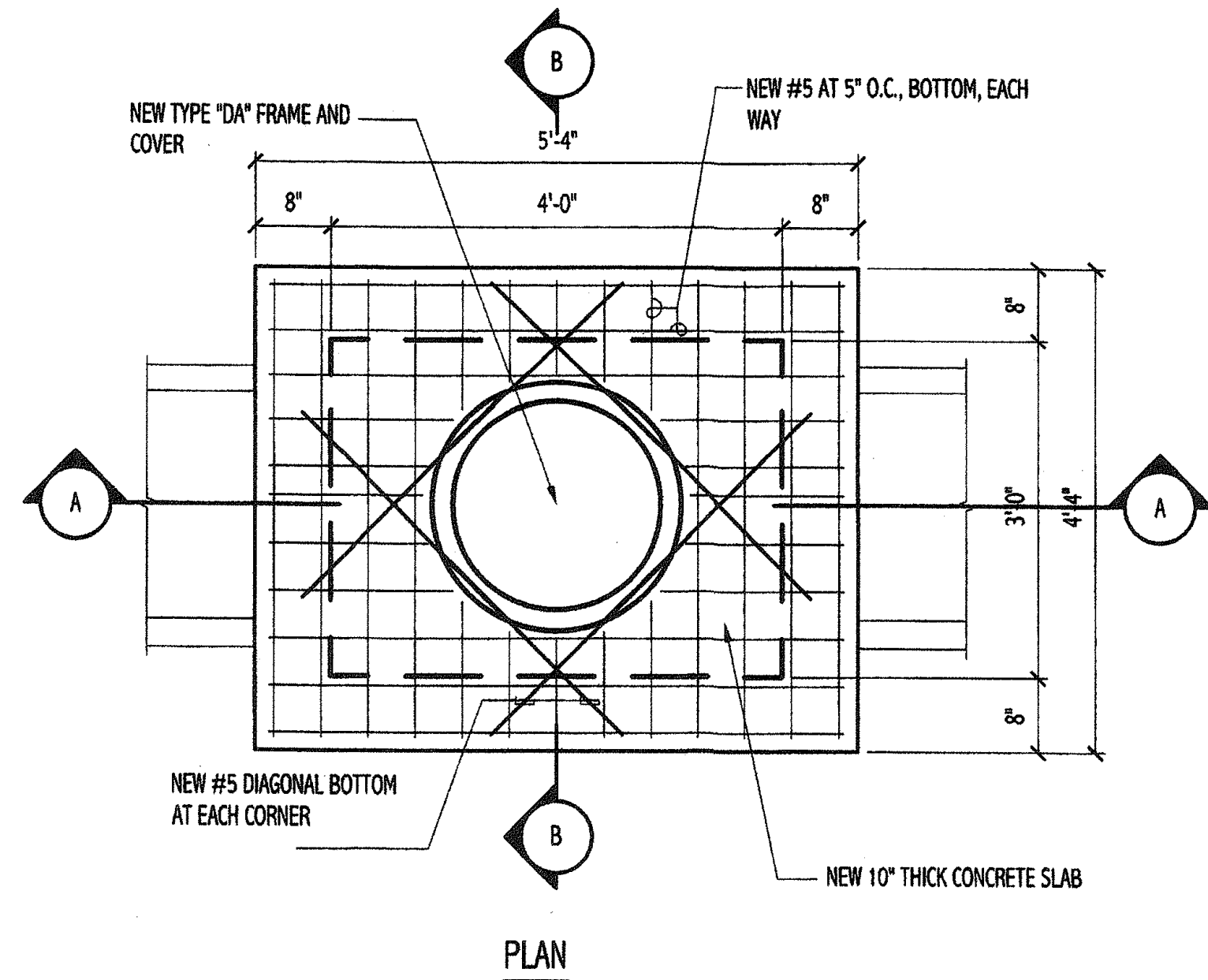


**SECTION X-X**  
SCALE: 3/4" = 1'-0"

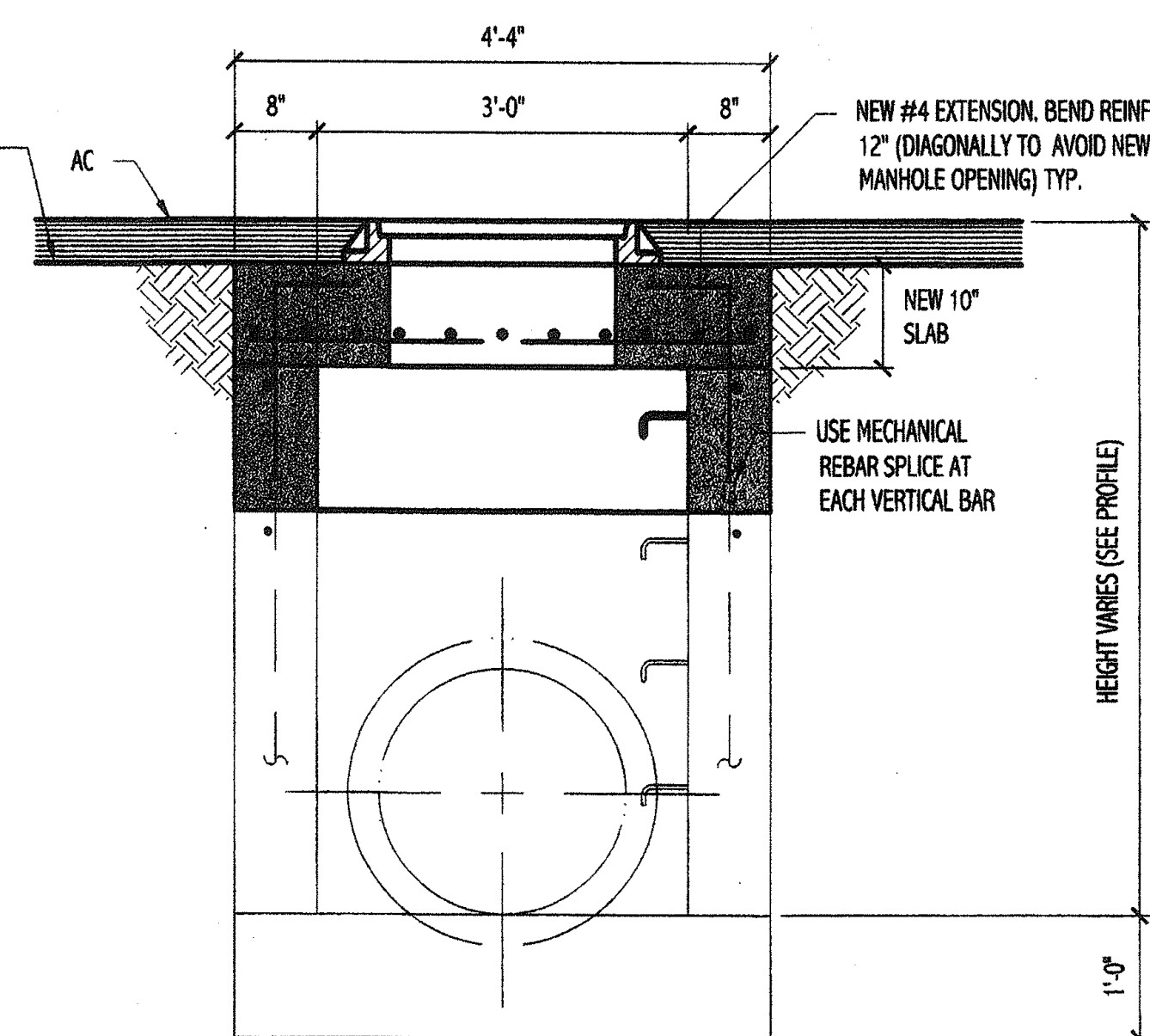


**SECTION Y-Y**  
SCALE: 3/4" = 1'-0"

**TYPICAL DEMOLITION PLANS OF EXISTING GRATED DROP INLET**  
AS NOTED

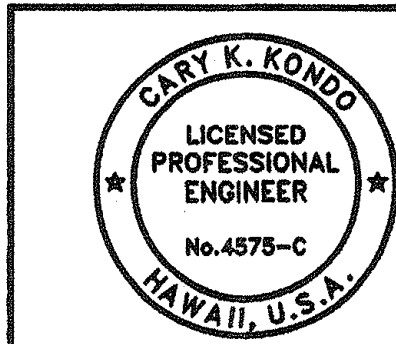
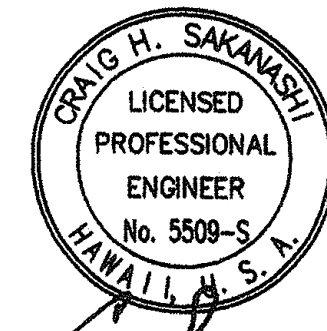
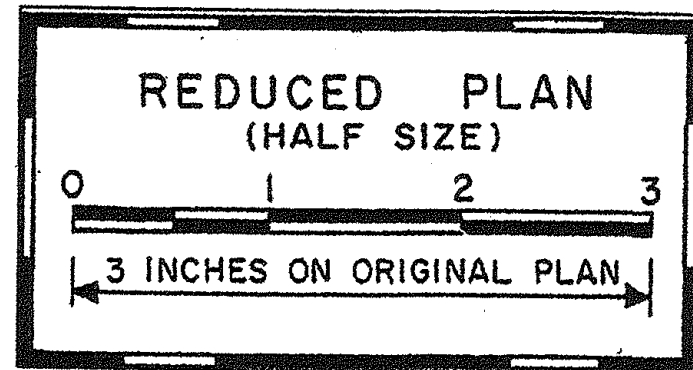


**SECTION A-A**  
SCALE: 3/4" = 1'-0"



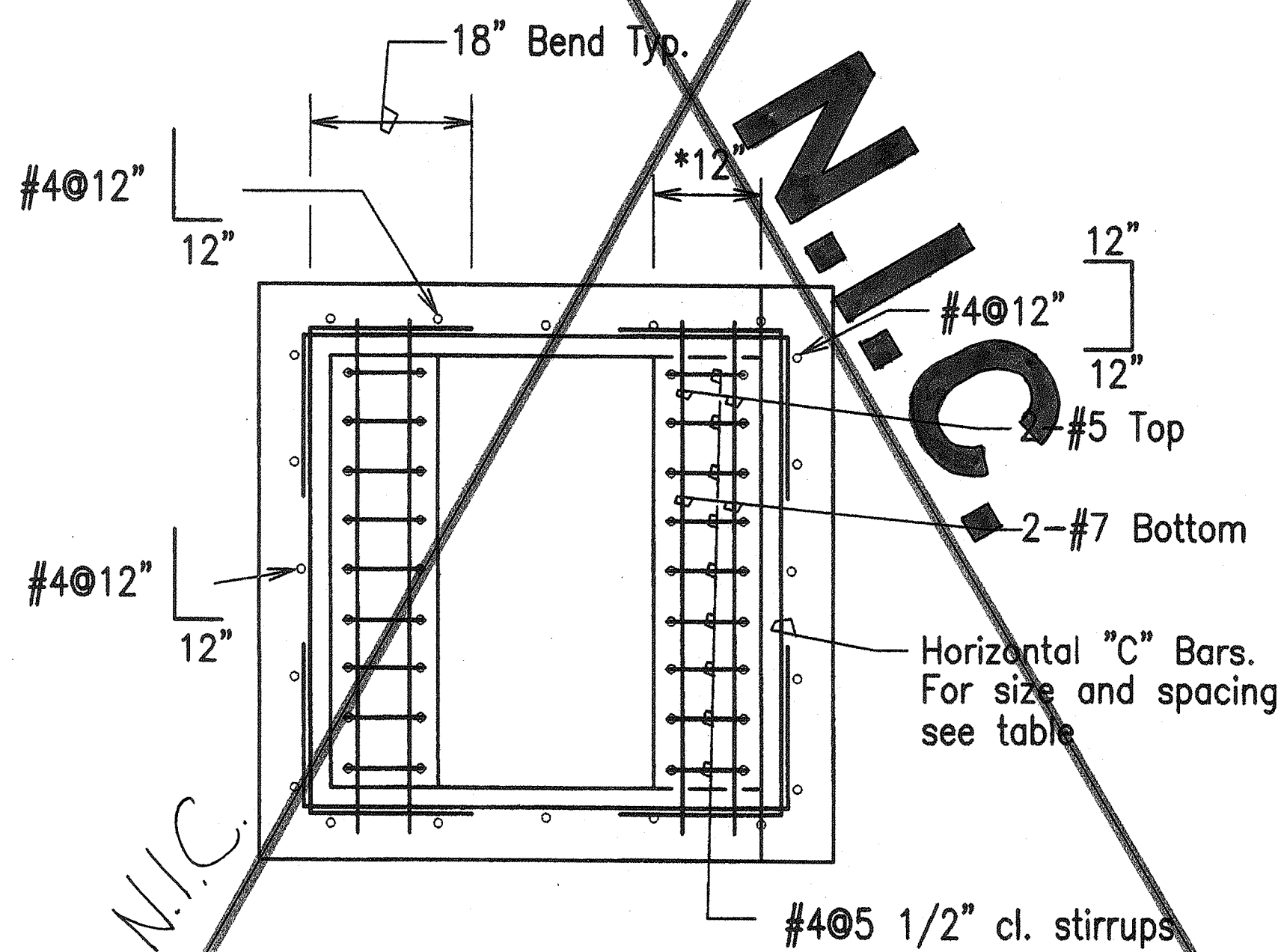
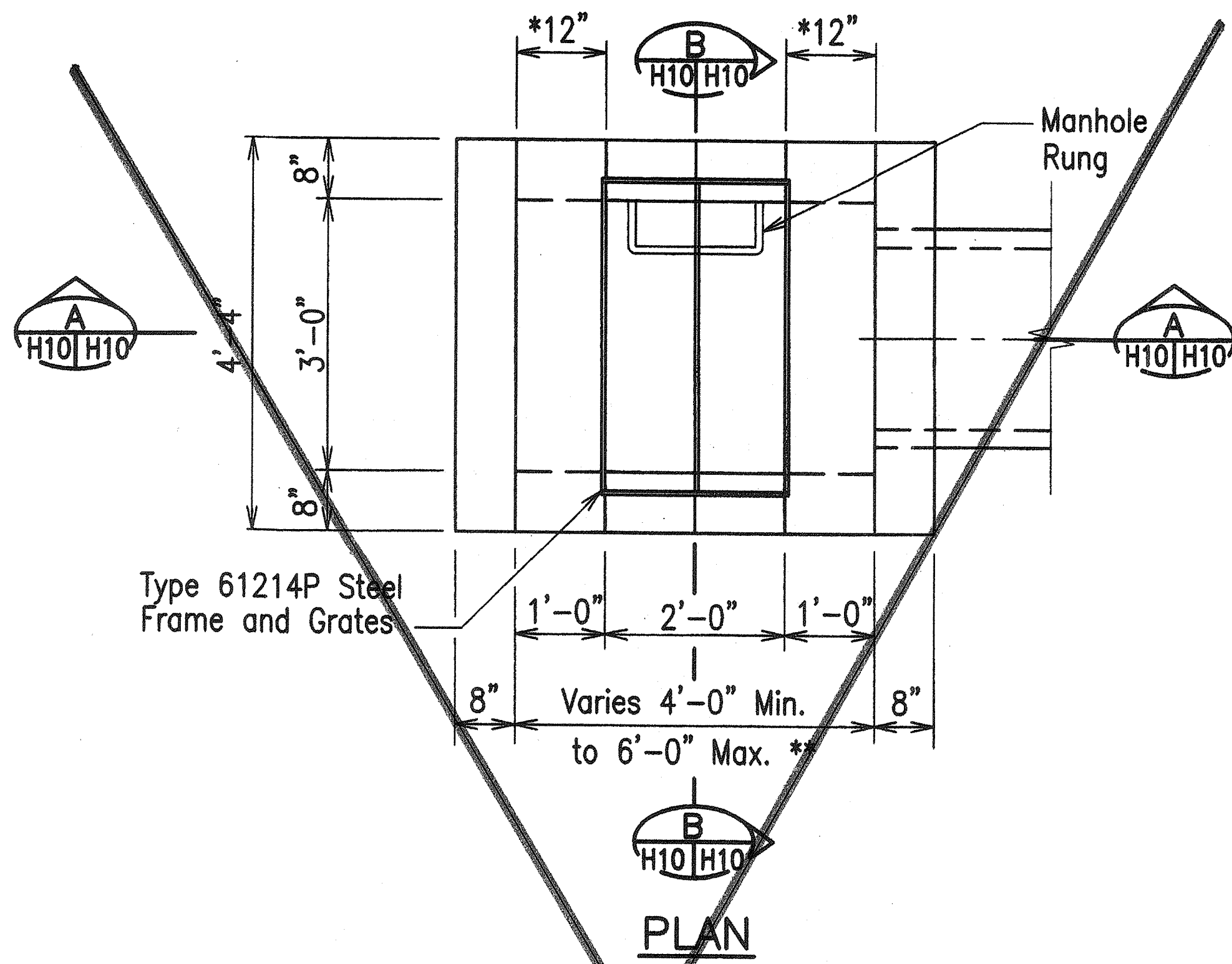
**SECTION B-B**  
SCALE: 3/4" = 1'-0"

**TYPICAL RE-CONSTRUCTION OF EXISTING GRATED DROP INLET TO MANHOLE COVER**  
AS NOTED



STATE OF HAWAII DEPARTMENT OF TRANSPORTATION HIGHWAYS DIVISION	
<b>DRAINAGE DETAILS</b>	
TRAFFIC OPERATIONAL IMPROVEMENTS AT VARIOUS LOCATIONS KAHULUI BEACH ROAD	
Project No. HWY-M-04-00	
Scale: AS NOTED	Date: Apr. 2002
SHEET No. 1 OF 3 SHEETS	





### GENERAL NOTE

- \* For Minimum size box, eliminate beam and use typical wall and wall reinforcing shown in the top portion.
- \*\* For Culverts larger than 30", the minimum dimension shall be D'.
- \*\*\* For details of Type 61214P steel frame and grate, see Standard Plan H-13 on Sheet 47. The cross slopes along the frame shall be 20:1 in lieu of 2:1 & 6:1.

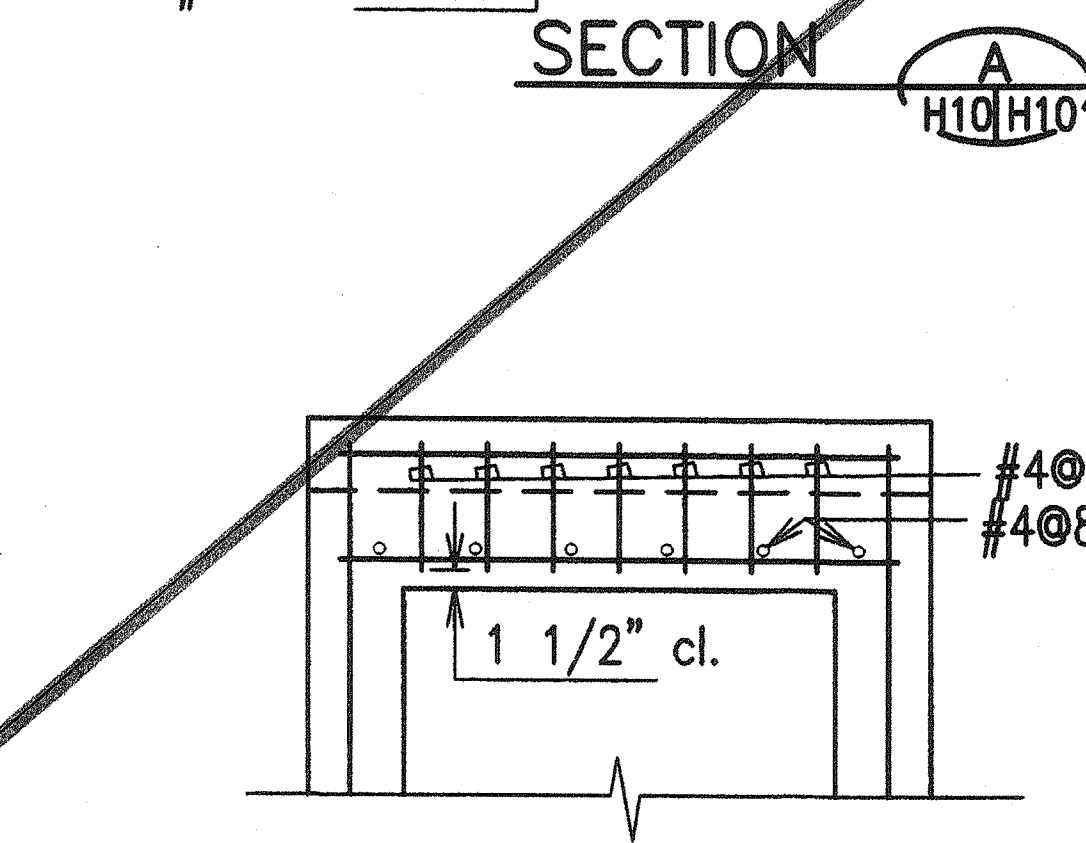
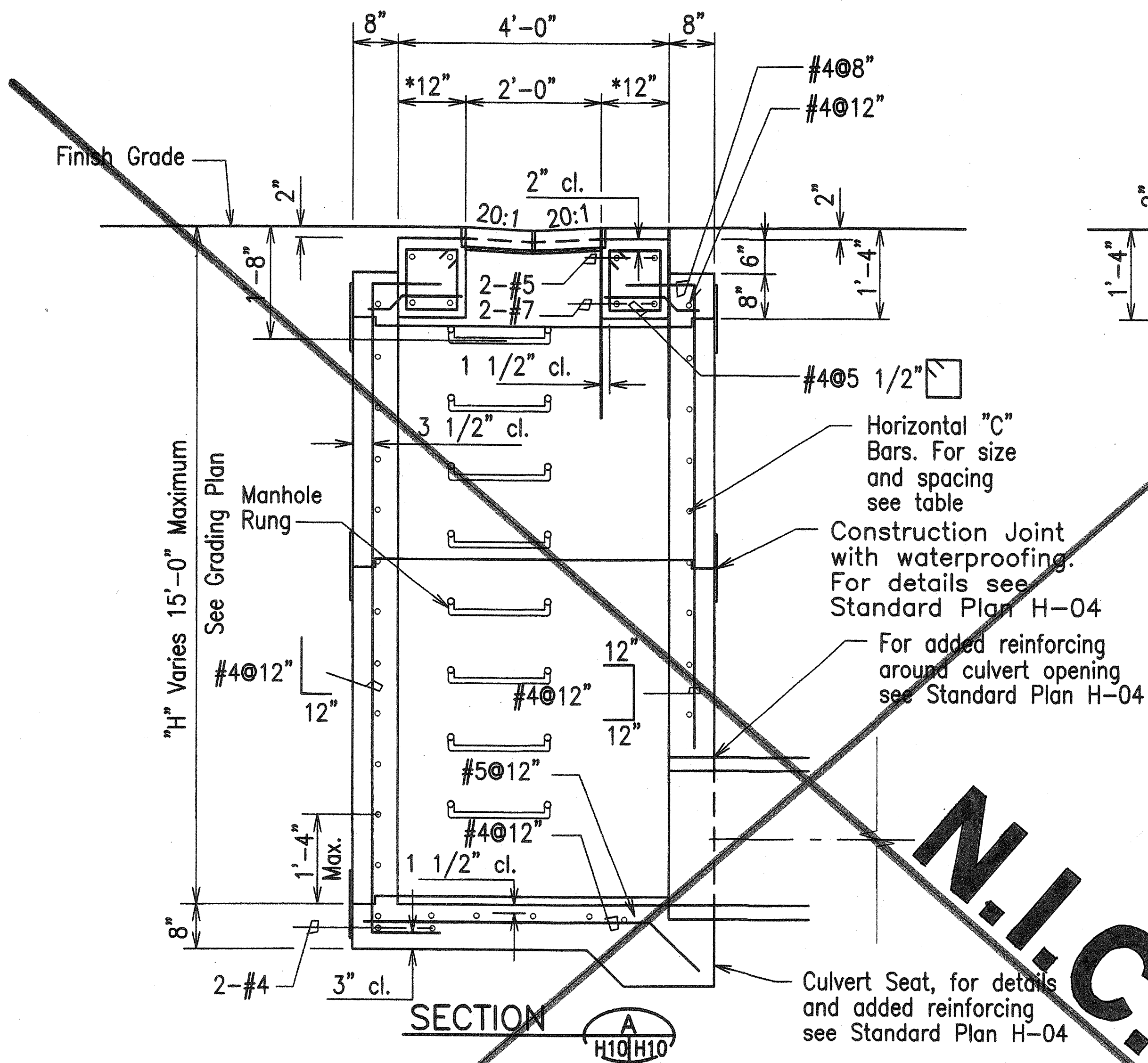
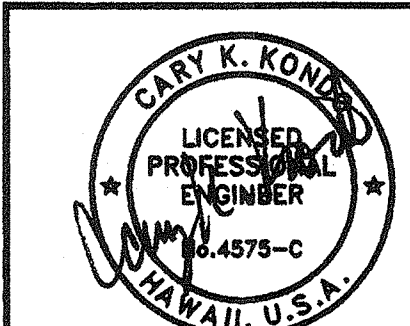
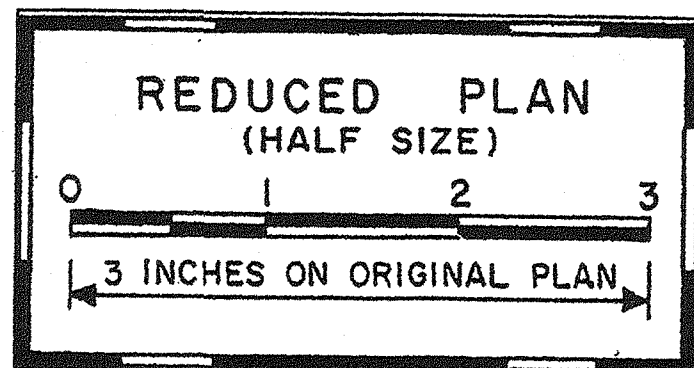


TABLE: GRATED DROP INLET	
DEPTH "H"	"C" BARS
0'-0" to 5'-0"	#4 @ 10"
5'-1" to 10'-0"	#5 @ 9"
10'-1" to 15'-0"	#5 @ 6"

DATE	_____
DESIGNED BY	_____
CHECKED BY	_____
NO.	_____

**STANDARD PLAN H-11**  
**TYPICAL DETAIL OF TYPE 61214 GRATED DROP INLET**  
 Scale: 3/4"=1'-0"



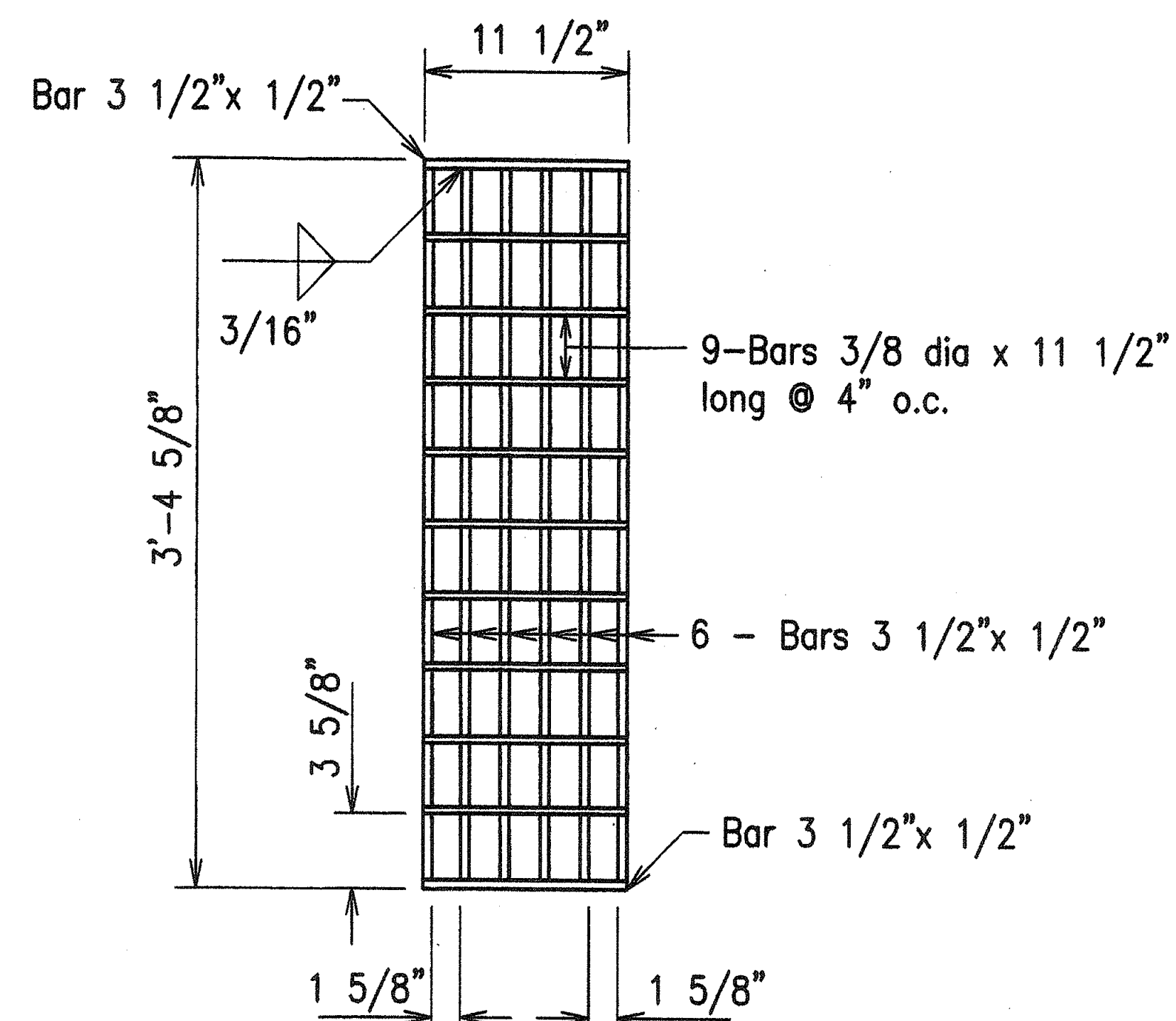
STATE OF HAWAII  
 DEPARTMENT OF TRANSPORTATION  
 HIGHWAYS DIVISION

**DRAINAGE DETAILS**

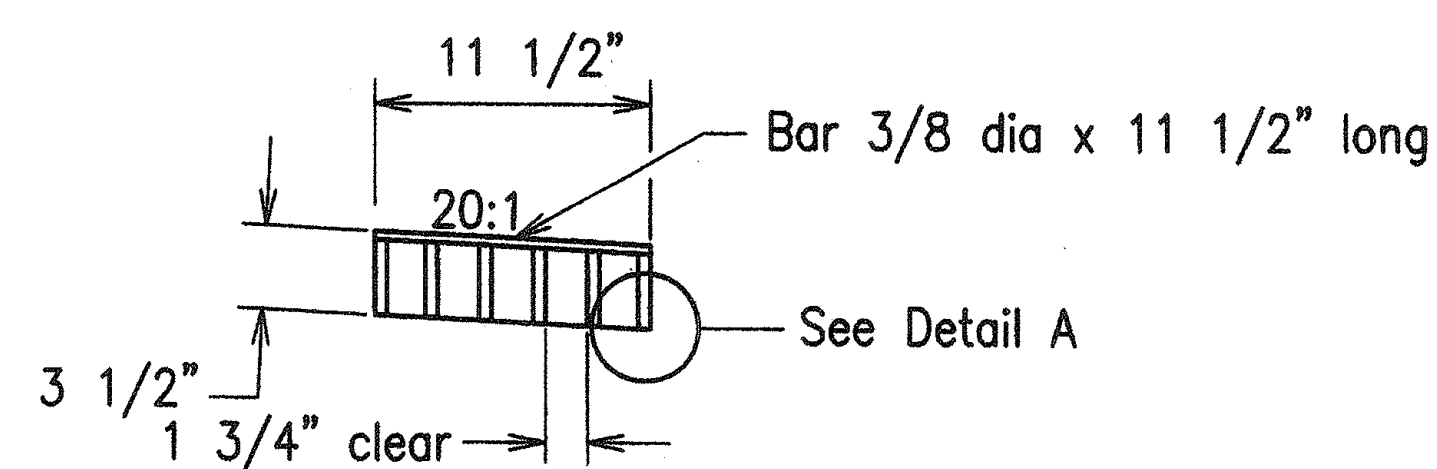
TRAFFIC OPERATIONAL IMPROVEMENTS  
 AT VARIOUS LOCATIONS  
 KAHULUI BEACH ROAD  
 AT SMALL BOAT HARBOR ROAD AND KAIHEE PLACE  
 Project No. HWY-M-04-00  
 Scale: AS NOTED Date: Apr. 2002  
 SHEET No. 2 OF 3 SHEETS

"AS BUILT"

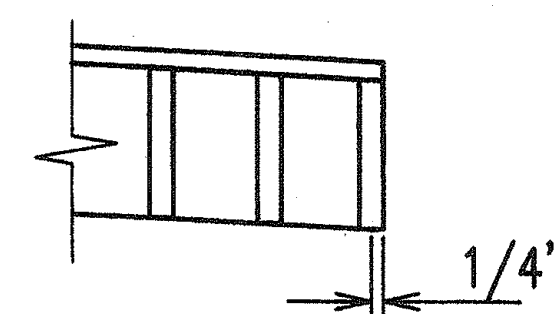
FED. ROAD DIST. NO.	STATE	PROJ. NO.	FISCAL YEAR	SHEET NO.	TOTAL SHEETS
HAWAII	HAW.	HWY-M-04-00	2002	47	63



PLAN



SECTION



DETAIL A

Half Size

GRATE

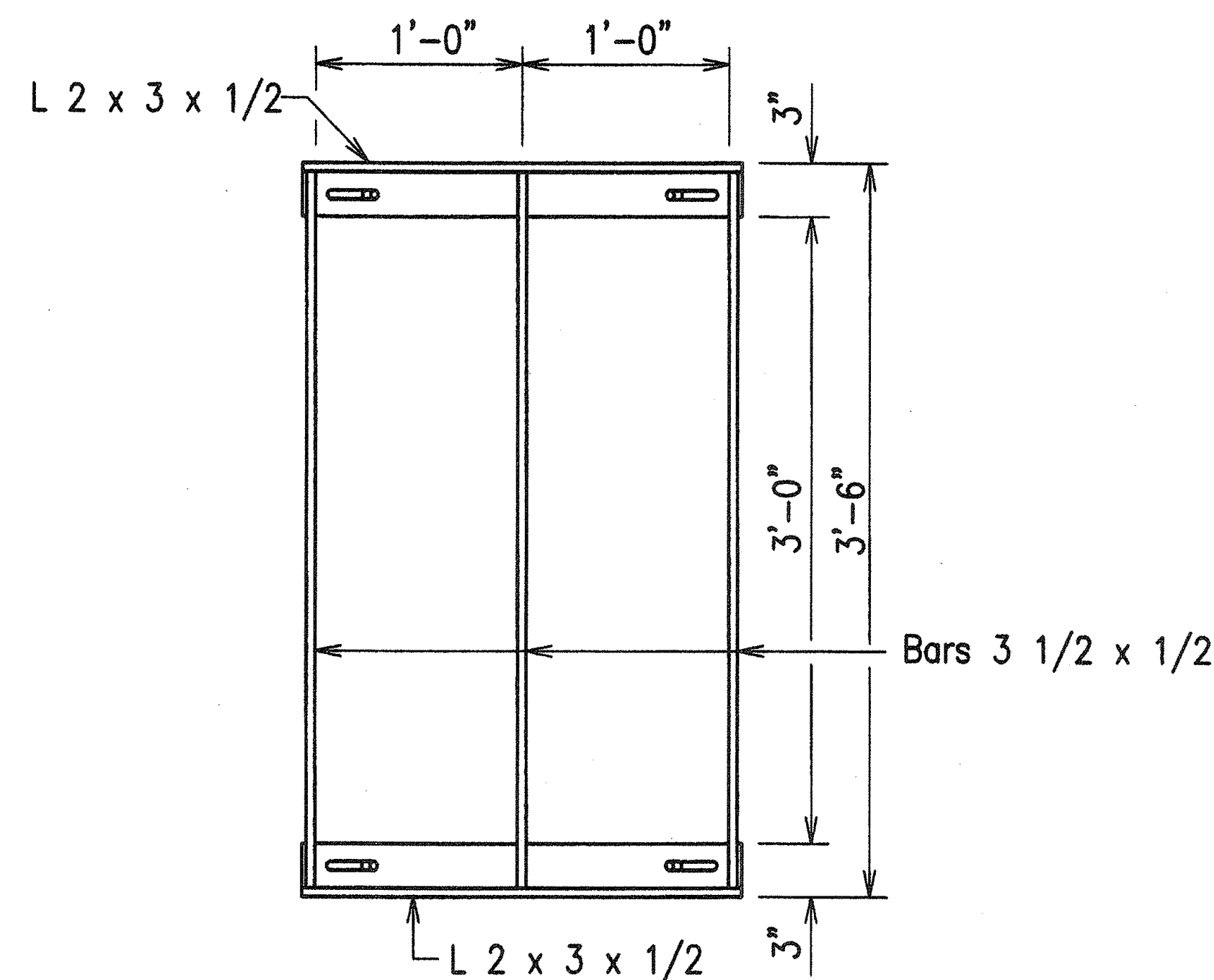
### GENERAL NOTES

1. Frames and Grates shall be hot dip galvanized after fabrication.
2. The cross slope along the frame and grate shall be 20:1 in lieu of 2:1 and 6:1.
3. All welds 3/8" unless otherwise noted.

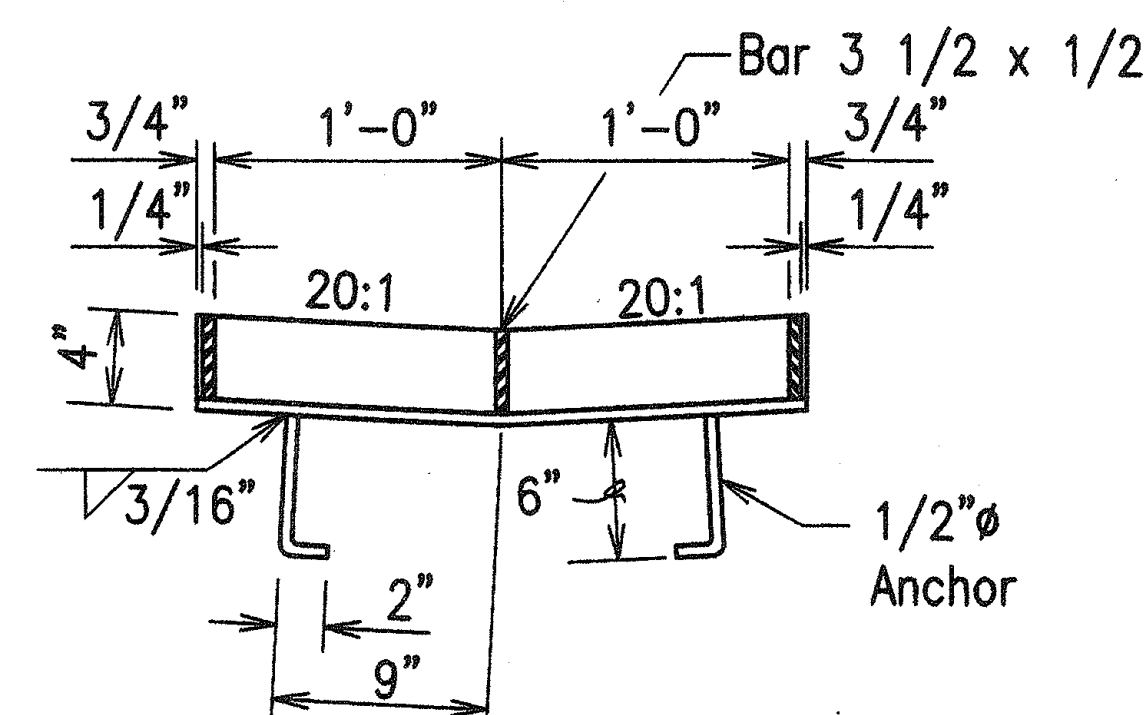
### STANDARD PLANS H-13 AND H-18

### TYPICAL DETAIL OF TYPE 2012012B STEEL FRAME AND GRATE

Scale: 1 1/2"=1'-0"

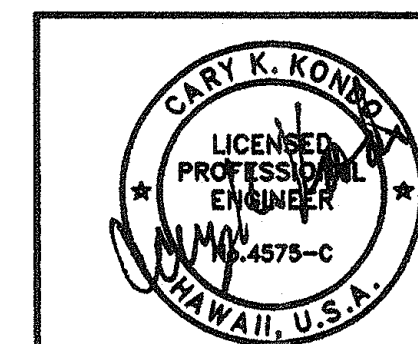
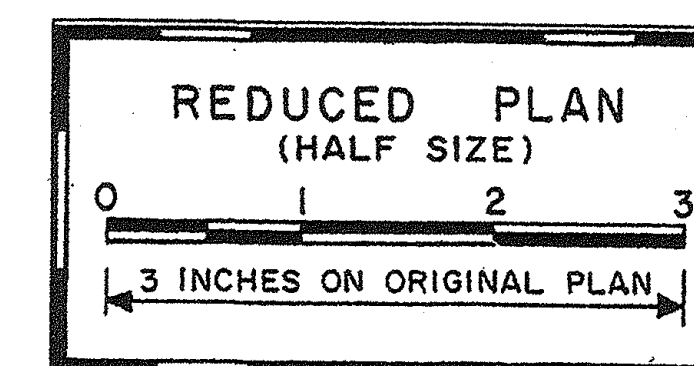


PLAN



SECTION

FRAME



THIS WORK WAS PREPARED BY ME OR UNDER MY SUPERVISION

STATE OF HAWAII DEPARTMENT OF TRANSPORTATION HIGHWAYS DIVISION
<b>DRAINAGE DETAILS</b>
TRAFFIC OPERATIONAL IMPROVEMENTS AT VARIOUS LOCATIONS KAHULUI BEACH ROAD AT SMALL BOAT HARBOR ROAD AND KAIHEE PLACE Project No. HWY-M-04-00
Scale: AS NOTED Date: Apr. 2002
SHEET No. 3 OF 3 SHEETS