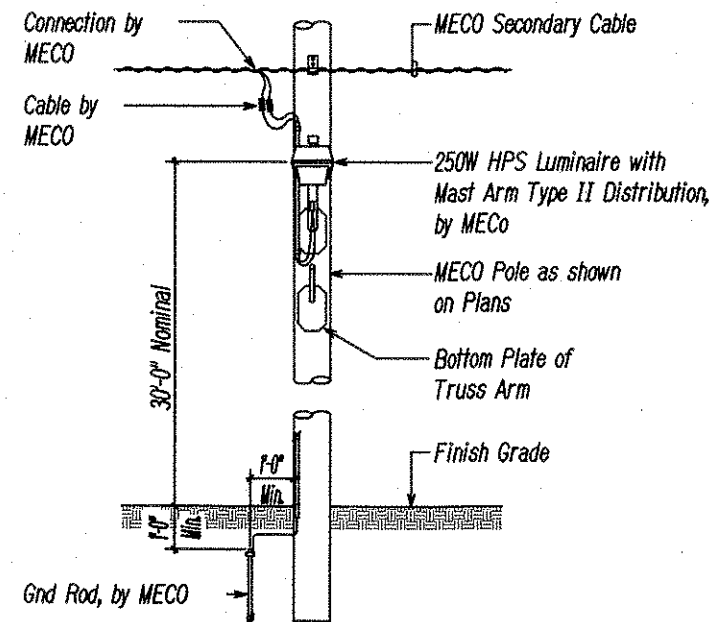
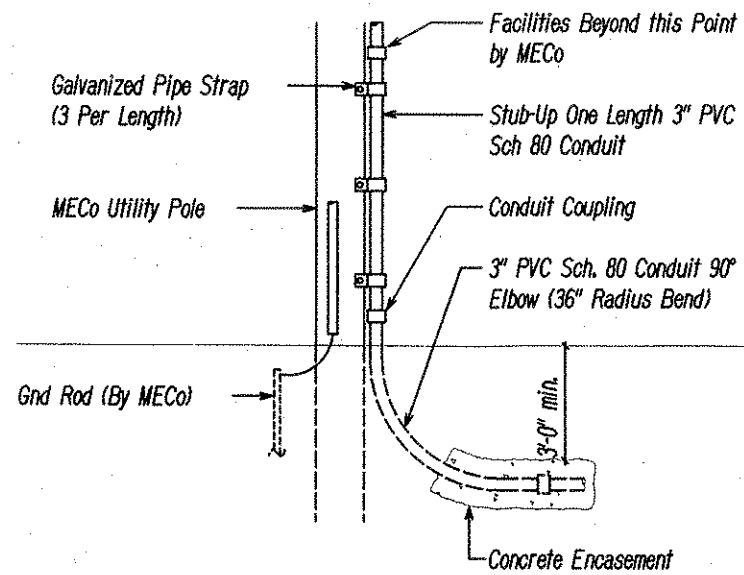


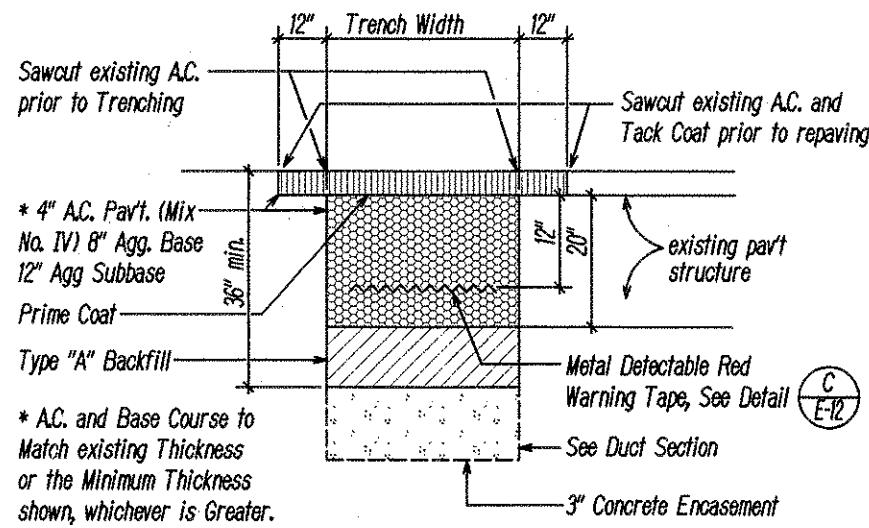
| FED. ROAD DIST. NO. | STATE | PROJ. NO. | FISCAL YEAR | SHEET NO. | TOTAL SHEETS |
|---------------------|-------|-------------|-------------|-----------|--------------|
| HAWAII | HAW. | HWY-M-06-98 | 2000 | 14 | 14 |



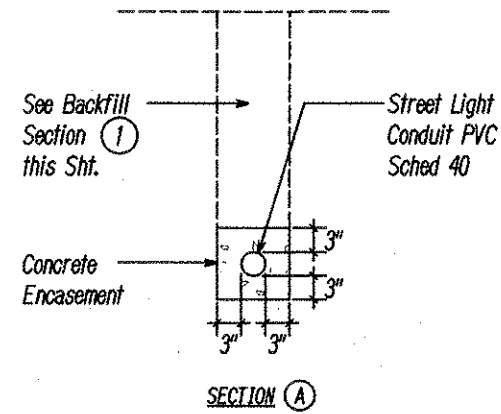
A TYPICAL STREET LIGHT ELEVATION AT TANGENT POLE
E-12
Not to Scale



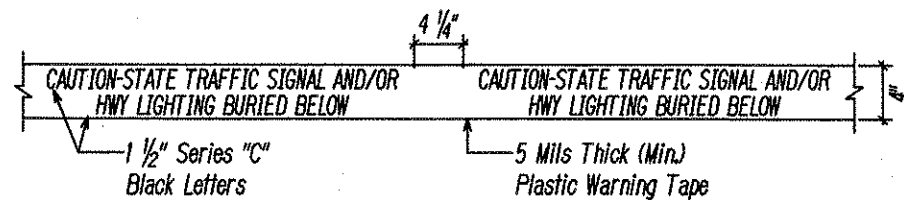
B TYPICAL POLE RISER DETAIL
E-12
Not to Scale



C TYPICAL BACKFILL SECTION WITH CONCRETE ENCASED DUCTS (STATE R.O.W.)
E-12
Not to Scale



DUCT SECTION DETAILS
Not to Scale



Note:

- The metal detectable red plastic warning tape shall be a minimum 5 mils thick and 4" wide with a continuous metallic backing and corrosion resistant 1* mil thick foil core. The message on the tape shall read, "CAUTION - STATE TRAFFIC SIGNAL AND/OR HWY LIGHTING BURIED BELOW", utilizing 1 1/2 inches series "c" black lettering. The message will be repeated with a 4 1/4" spacing between top line of message and start of next repeat.

C METAL DETECTABLE RED PLASTIC WARNING TAPE
E-12
Not to Scale

BACKFILL NOTES

Not to Scale

- Trench Backfill Material "A" Beach Sand, Earth, or Earth and Gravel. If Earth and Gravel used, the maximum shall contain not more than 50% by volume of rock particles. Maximum 8" loose fill per lift. Obtain 95% compaction for each lift.
- Concrete - 3" Encasement, 3000 PSI Compressive Strength @ 3 Days.

| CONDUIT SCHEDULE | |
|------------------|--|
| Item | Description |
| 2L | 2" C, MECO (Street Lighting) with Pullwire |
| 3L | 3" C, MECO (Street Lighting) with Pullwire |

TRENCHING NOTES

- If trench is located on unpaved area, the Contractor shall replace 8" Agg. Base Course, 12" Agg. Subbase Course and 4" A.C. Pavement with Type "A" backfill material.
- The Contractor may begin backfilling the conduit trench when the concrete reaches 3000 psi compressive strength after 3 days.

| | |
|-------------------|------|
| SURVEY PLOTTED BY | DATE |
| DRAWN BY | |
| DESIGNED BY | |
| QUANTITIES BY | |
| CHECKED BY | |
| NO. | |

19 May 2000
This Work was Prepared by Me or Under My Supervision

STATE OF HAWAII
DEPARTMENT OF TRANSPORTATION
HIGHWAYS DIVISION

MISCELLANEOUS DETAILS

Street Lights at
Various Highway Locations
Project No. HWY-M-06-98

Scale: AS NOTED Date: May, 2000

SHEET No. E-12 OF 12 SHEETS