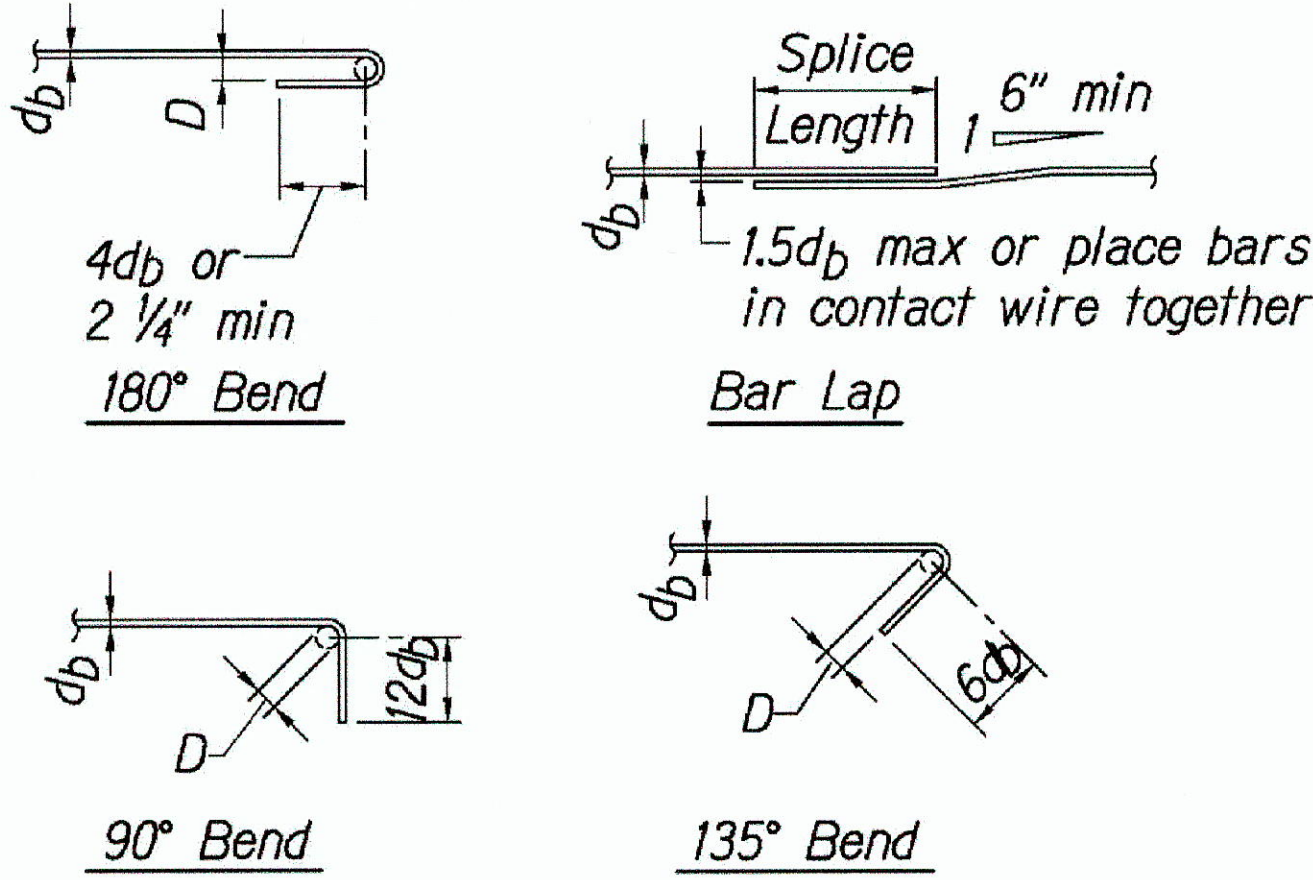


FED. ROAD DIST. NO.	STATE	FED. AID PROJ. NO.	FISCAL YEAR	SHEET NO.	TOTAL SHEETS
MAUI	HAW.	ER-16(009)	2012	6	13

Minimum Splice and Development Lengths					
Bar Size	Lap Splice		Development		
	Top Bars	Other Bars	Straight		with Standard Hook
			Top Bars	Other Bars	
#3	26"	20"	20"	16"	8"
#4	34"	26"	26"	20"	10"
#5	42"	32"	32"	24"	12"
#6	50"	38"	38"	30"	16"
#7	72"	54"	54"	42"	18"
#8	82"	62"	62"	48"	20"

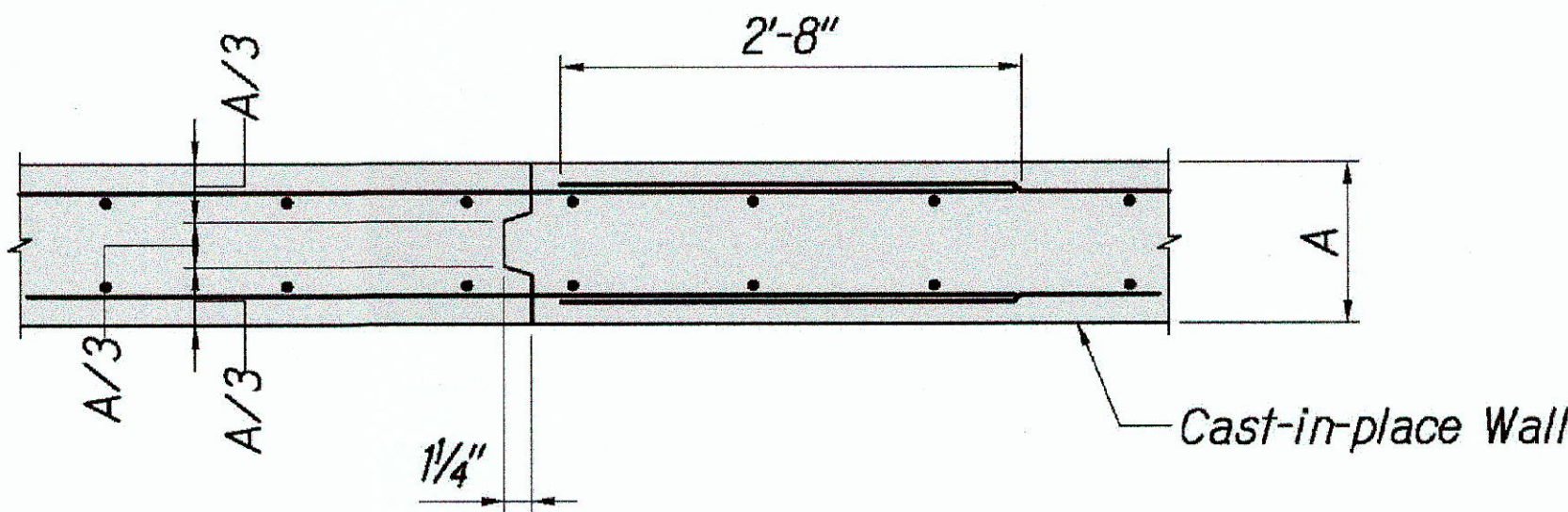
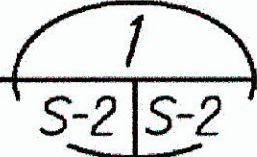


- Notes:
- Lengths are for concrete with rebar space 6 bar diameters minimum. Increase 25% for bars spaced less than 6 bar diameters.
  - "Top Bars" are horizontal bars with 12" or more of concrete cast below.

$$D = 6d_b$$

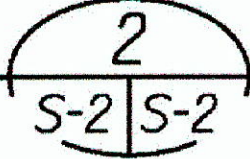
### TYPICAL REBAR SPLICE AND EMBEDMENT LENGTH SCHEDULE

Not to Scale



### TYPICAL WALL CONSTRUCTION JOINT DETAIL

Not to Scale

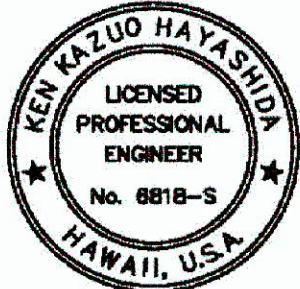


ORIGINAL PLAN	SURVEY PLOTTED BY	DATE
NOTE BOOK	DRAWN BY	6/30/05
DESIGNED BY	REVIEWED BY	
QUANTITIES BY	CHECKED BY	
NO.		

PROJECT: P-1601-2007(009) S-2 - New Highway Construction, Segment 009, Hana Highway, Maui, Hawaii. DRAWN: 6/30/05. CHECKED: 6/30/05. DATE: 6/30/05. SCALE: 1/4" = 1'-0".

#### LEGEND FOR AS-BUILT POSTINGS

- Squiggly line for as-built deletion
- Double line for as-built deletion
- Roadway Text for as-built posting



STATE OF HAWAII  
DEPARTMENT OF TRANSPORTATION  
HIGHWAYS DIVISION

TYPICAL DETAILS  
HANA HIGHWAY EMERGENCY REPAIRS  
MILEPOST 14.0  
FEDERAL AID PROJECT No. ER-16(009)

Scale: As Noted  
Date: June 2012

SHEET No. S-2 OF 6 SHEETS

EXPIRATION DATE OF THE LICENSE: 4/30/2014  
THIS WORK WAS PREPARED BY ME OR UNDER MY SUPERVISION.

"AS-BUILT"