

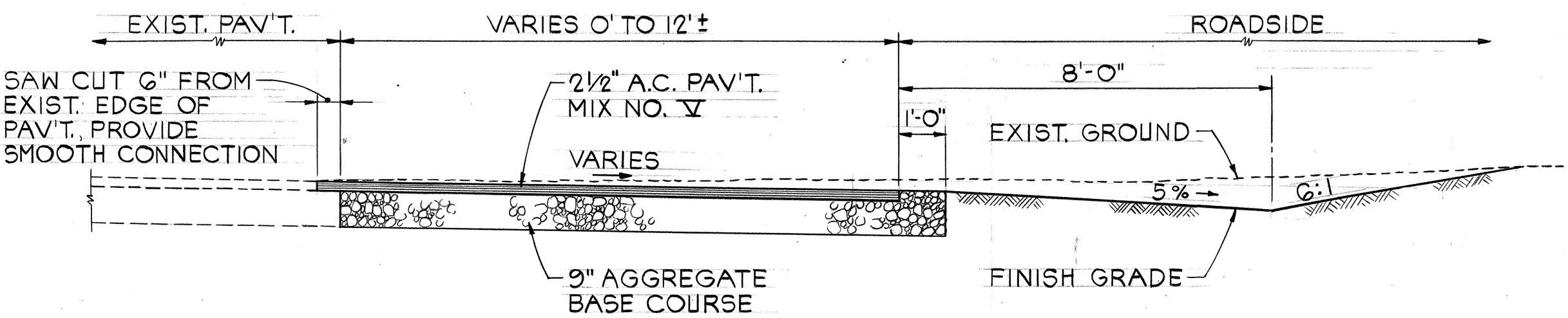
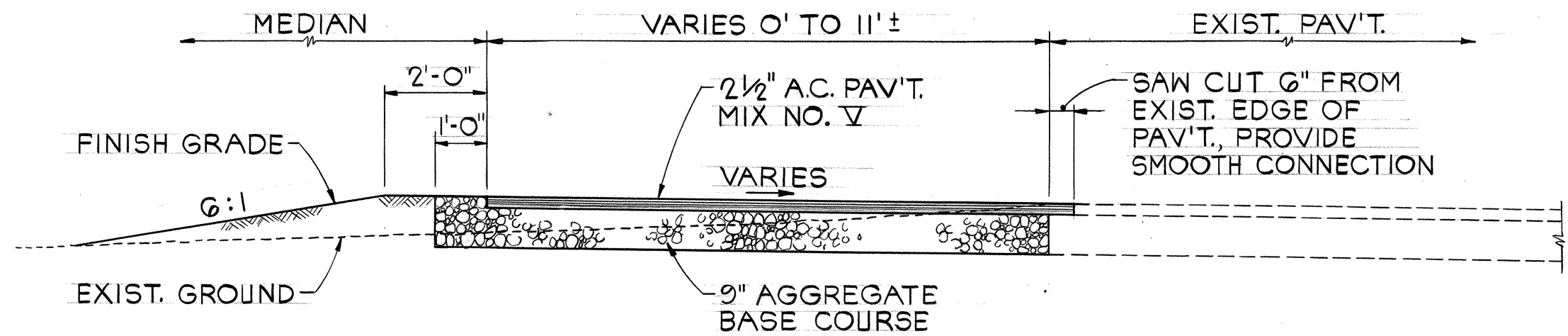
CONSTRUCTION NOTES

1. LOCATIONS OF EXISTING UNDERGROUND STRUCTURES AND UTILITIES, SUCH AS PIPELINES, CONDUITS, CABLES, ETC., SHOWN ON PLANS ARE APPROXIMATE ONLY. IT IS NOT THE INTENT OF THESE PLANS TO SHOW THE EXACT LOCATION OF ALL UNDERGROUND UTILITIES AND STRUCTURES. IT IS THE RESPONSIBILITY OF THE CONTRACTOR TO VERIFY THE LOCATIONS OF ALL EXISTING UTILITIES WITH THE RESPECTIVE OWNERS. EXISTING UTILITIES DAMAGED BY THE CONTRACTOR SHALL BE REPAIRED BY THE CONTRACTOR AT HIS OWN COST.
2. THE LOCATIONS OF THE TRAFFIC SIGNAL STANDARDS, TRAFFIC SIGNAL STANDARDS WITH MAST-ARM, TRAFFIC CONTROLLER, PULLBOXES, CONDUITS AND LOOP DETECTORS SHALL BE STAKED OUT IN THE FIELD BY THE CONTRACTOR AND APPROVAL OF THE LOCATIONS OBTAINED FROM THE ENGINEER PRIOR TO CONSTRUCTION AND INSTALLATION.
3. ALL TRAFFIC SIGNAL WORK SHALL CONFORM TO THE REQUIREMENTS OF THE "MANUAL ON UNIFORM TRAFFIC CONTROL DEVICES FOR STREETS AND HIGHWAYS", FEDERAL HIGHWAY ADMINISTRATION (1978) AND AMENDMENTS.
4. REMOVAL OF EXISTING SIGNS SHALL ALSO INCLUDE THE REMOVAL OF POSTS AND FOUNDATIONS UNLESS OTHERWISE NOTED. ALL SUCH MATERIALS SHALL BE STORED WITHIN THE PROJECT LIMITS WHERE DIRECTED BY THE ENGINEER. COST SHALL BE INCIDENTAL TO OTHER ITEMS OF WORK.
5. THE CONTRACTOR SHALL VERIFY WITH THE ENGINEER THE LOCATIONS OF TRAFFIC MARKINGS AND MARKERS (LANE LINES, STOP LINES, PAV'T. ARROWS, ETC.) SHOWN ON THE PLANS PRIOR TO THE INSTALLATION OF THE TRAFFIC SIGNAL SYSTEM.
6. REMOVAL OF PAV'T. MARKINGS AND STRIPINGS SHALL BE DONE BY THE CONTRACTOR.
7. STOP SIGN INDICATED TO BE REMOVED SHALL BE REMOVED AFTER THE TRAFFIC SIGNAL SYSTEM BECOMES OPERATIONAL.
8. EXISTING TRAFFIC SIGNAL SYSTEM SHALL BE REMOVED AFTER THE NEW TRAFFIC SIGNAL SYSTEM IS OPERATIONAL. ALL TRAFFIC SIGNAL HEADS, THE CONTROLLER AND APPURTENANCES, AND THE CONTROL CABLE SHALL BE STORED WITHIN THE PROJECT LIMITS WHERE DIRECTED BY THE ENGINEER.
9. MAINTENANCE OF TRAFFIC THROUGH THE CONSTRUCTION AREA SHALL BE IN ACCORDANCE WITH PART VI OF THE "MANUAL ON UNIFORM TRAFFIC CONTROL DEVICES FOR STREETS AND HIGHWAYS", FEDERAL HIGHWAY ADMINISTRATION (1978) AND AS SPECIFIED IN THE SPECIAL PROVISIONS. THE CONTRACTOR SHALL FURNISH AND MAINTAIN ADEQUATE BARRICADES, BLINKERS, CONSTRUCTION SIGNS, ETC. FOR THE SAFETY OF THE MOTORING PUBLIC. COST SHALL BE INCIDENTAL TO OTHER ITEMS OF WORK.

TRAFFIC SIGNAL NOTES

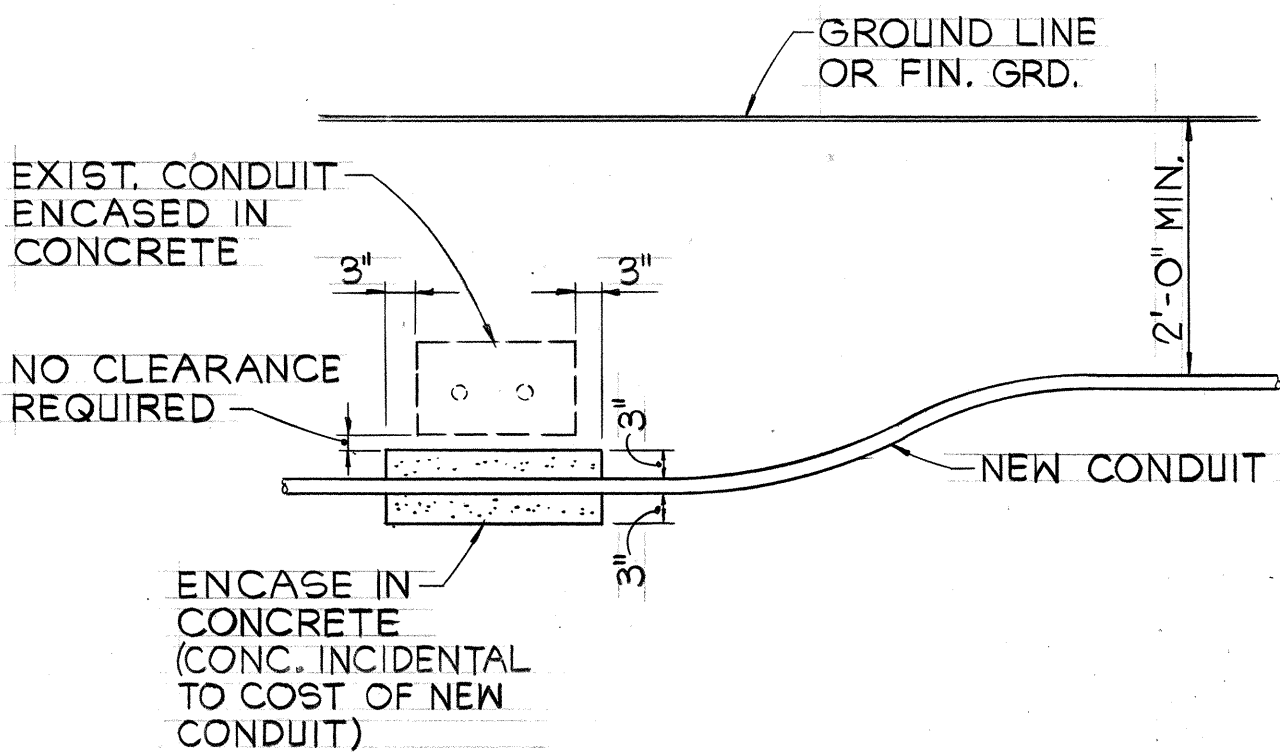
1. ALL TRAFFIC SIGNAL CONTROLLER EQUIPMENT SHALL BE COMPLETELY WIRED IN THE CABINET AND SHALL CONTROL THE TRAFFIC SIGNALS AS CALLED FOR ON THE PLANS.
2. SIGNAL INDICATIONS DURING CLEARANCE INTERVAL:
  - a. IF A SIGNAL IS G OR ~~G~~ AND WILL REMAIN G OR ~~G~~ DURING THE NEXT PHASE, IT SHALL BE G OR ~~G~~ DURING THE CLEARANCE INTERVAL.
  - b. IF A SIGNAL IS G OR ~~G~~ AND WILL BECOME R OR EXTINGUISHED DURING THE NEXT PHASE, IT SHALL BE Y OR ~~Y~~ DURING THE CLEARANCE INTERVAL.
  - c. IF A SIGNAL IS R AND WILL REMAIN R OR BECOME G DURING THE NEXT PHASE, IT SHALL REMAIN R DURING THE CLEARANCE INTERVAL.
3. THE CONTROLLERS FURNISHED SHALL BE A 2-8 PHASE CONTROLLER. COORDINATION UNITS ARE NOT REQUIRED FOR THIS PROJECT. HOWEVER, THE CABINETS SHALL BE WIRED FOR INSTALLING IN THE FUTURE A COORDINATION UNIT OF THE SAME MANUFACTURER AS THE CONTROLLER UNITS.
4. THE LOOP AMPLIFIER UNITS FURNISHED FOR THIS PROJECT SHALL BE CAPABLE OF OPERATING THE LOOP DETECTOR CONFIGURATIONS SHOWN ON THE PLANS.
5. MINIMUM CONTROLLER CABINET SIZE SHALL BE 40" HIGH, 24" WIDE AND 14" DEEP.
6. CONTRACTOR SHALL FURNISH A 50-AMP CIRCUIT BREAKER.
7. A SOLID #8 BARE COPPER WIRE SHALL BE PULLED WITH THE TRAFFIC CONTROL CABLE FOR EQUIPMENT GROUND. COST SHALL BE INCIDENTAL TO THE INSTALLATION OF THE CONTROL CABLE.

FED. ROAD DIST. NO.	STATE	FED. AID PROJ. NO.	FISCAL YEAR	SHEET NO.	TOTAL SHEETS
HAWAII	HAW.	FAU MG-0900(15)	1981	3	23



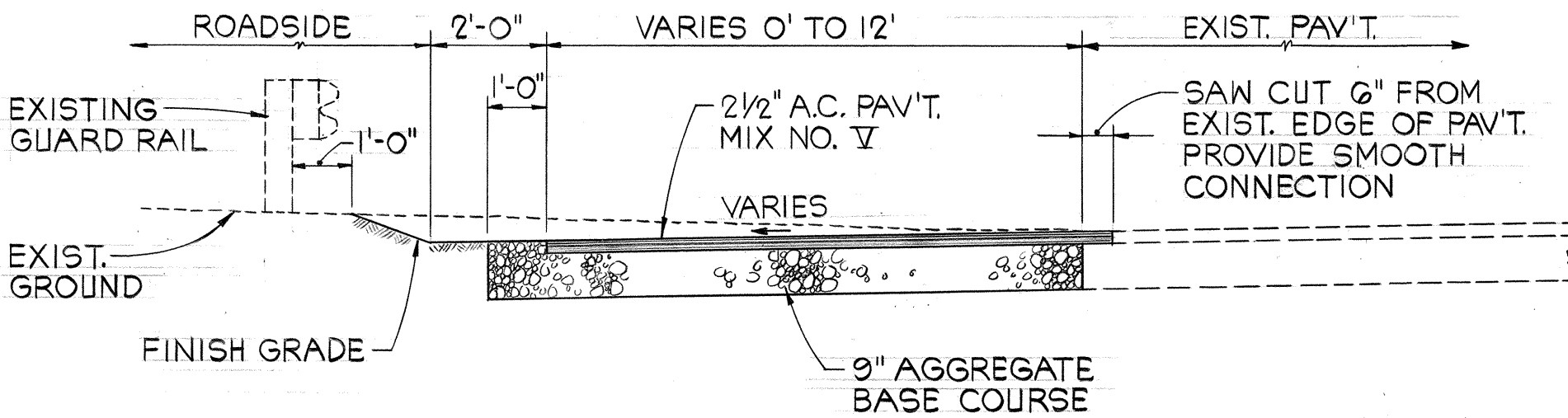
TYPICAL PAVEMENT SECTIONS

SCALE: 3/8"=1'-0" (HANA HIGHWAY/DAIRY ROAD)



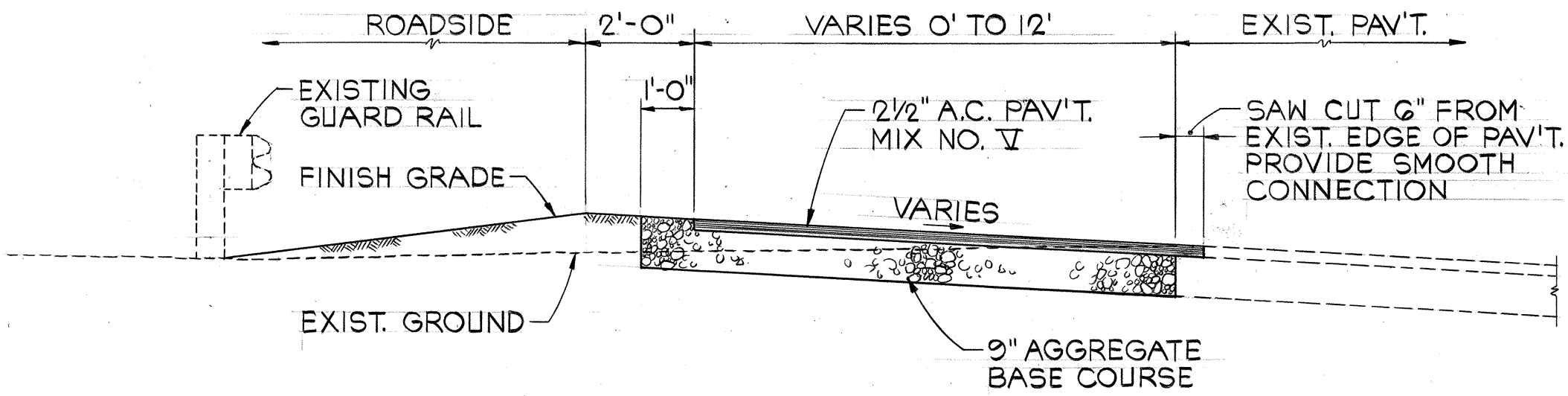
CONDUIT BY-PASS DETAIL

NOT TO SCALE



CUT SECTION

PAVEMENT WIDENING FOR RIGHT TURN LANE



FILL SECTION

PAVEMENT WIDENING FOR RIGHT TURN LANE

TYPICAL PAVEMENT SECTIONS

SCALE: 3/8"=1'-0" (KAHULUI BEACH RD./WAIHEHU BEACH RD.)



THIS WORK WAS PREPARED BY ME OR UNDER MY SUPERVISION  
*Theodore S. Kawahigashi*  
Signature

STATE OF HAWAII  
DEPARTMENT OF TRANSPORTATION  
HIGHWAYS DIVISION  
TYPICAL PAVEMENT SECTIONS  
AND NOTES  
KAHULUI BEACH RD, TRAFFIC SIGNALS  
AT WAIHEHU BEACH ROAD AND  
HANA HIGHWAY, TRAFFIC SIGNALS  
AT DAIRY ROAD  
FAU PROJECT NO. MG-0900(15)  
SCALE: AS SHOWN  
DATE: MAY 20, 1981  
SHEET No. 1 OF 1 SHEETS