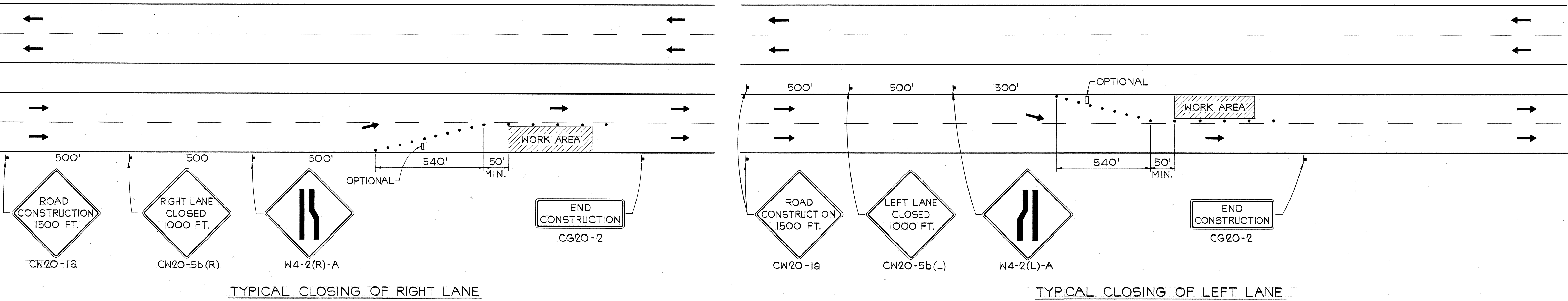


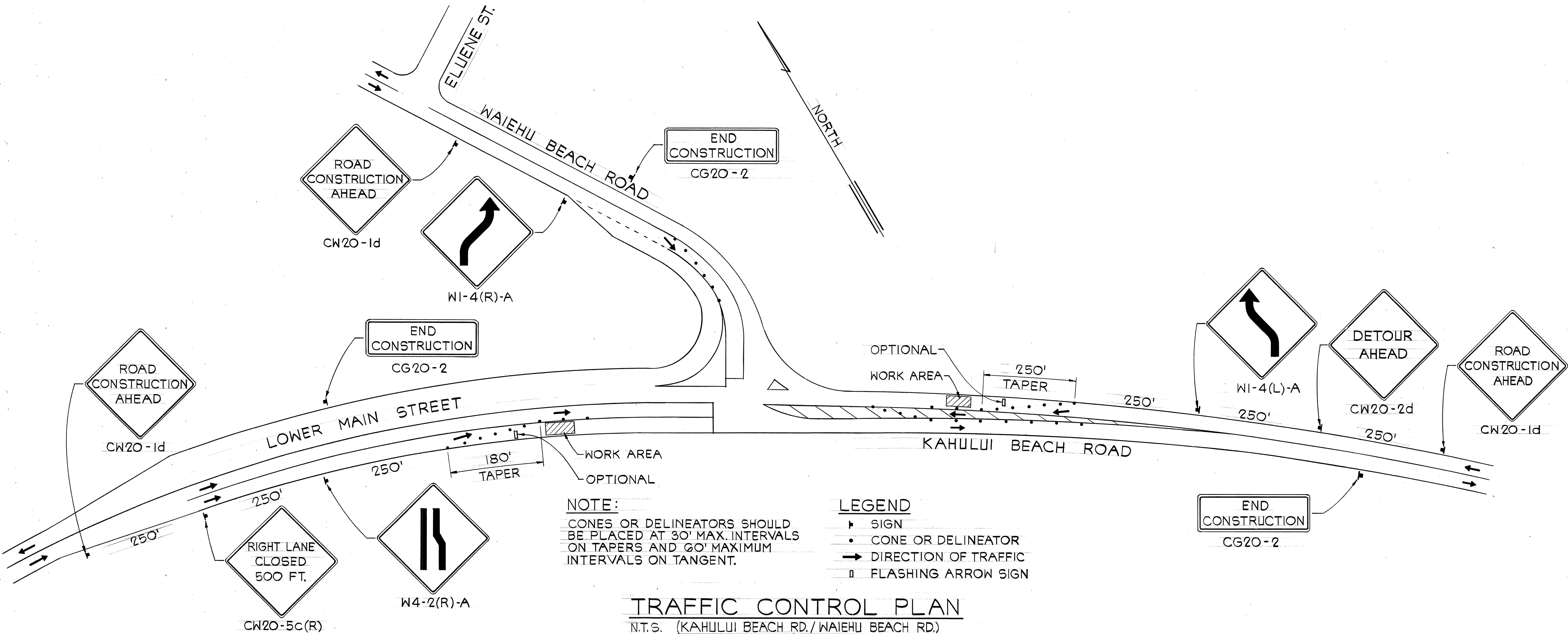
FED. ROAD DIST. NO.	STATE	FED. AID PROJ. NO.	FISCAL YEAR	SHEET NO.	TOTAL SHEETS
HAWAII	HAW.	FAU MG-0900(15)	1981	2	23



NOTE:
 1. DELINEATORS: CONES OR DELINEATORS SHOULD BE PLACED AT 30' SPACING ON TAPER AND 60' SPACING ON TANGENT.

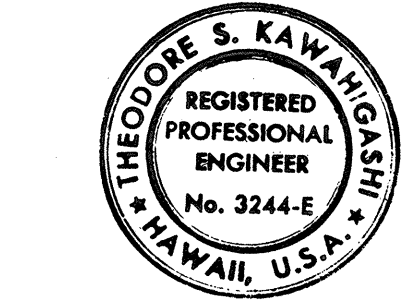
TRAFFIC CONTROL PLAN

N.T.S. (HANA HIGHWAY/DAIRY ROAD)



TRAFFIC CONTROL PLAN

N.T.S. (KAHULUI BEACH RD./WAIEHU BEACH RD.)



THIS WORK WAS PREPARED BY ME OR UNDER MY SUPERVISION
Theodore S. Kawahigashi
 Signature

STATE OF HAWAII
DEPARTMENT OF TRANSPORTATION
HIGHWAYS DIVISION

TRAFFIC CONTROL PLAN
KAHULUI BEACH RD, TRAFFIC SIGNALS
AT WAIEHU BEACH ROAD AND
HANA HIGHWAY, TRAFFIC SIGNALS
AT DAIRY ROAD
FAU PROJECT NO. MG-0900(15)
SCALE: AS SHOWN

DATE: MAY 20, 1981
SHEET No. 1 OF 2 SHEETS

SURVEY PLOTTED BY	DATE
DRAWN BY	
DESIGNED BY	
NOTE BOOK	
QUANTITIES BY	
CHECKED BY	
No.	