

2.0' Taper

6.0' New Paved Shoulder

E.P.

11.0' & Varies

11.0' & Varies

E.P.

Varies Paved Shoulder

2.0' Taper

Dressed Shoulder See Gen. Note No. 10 Plan Sht. No. 3

existing ground

3" Thick ACB

Saw Cut

S.E. Cont.

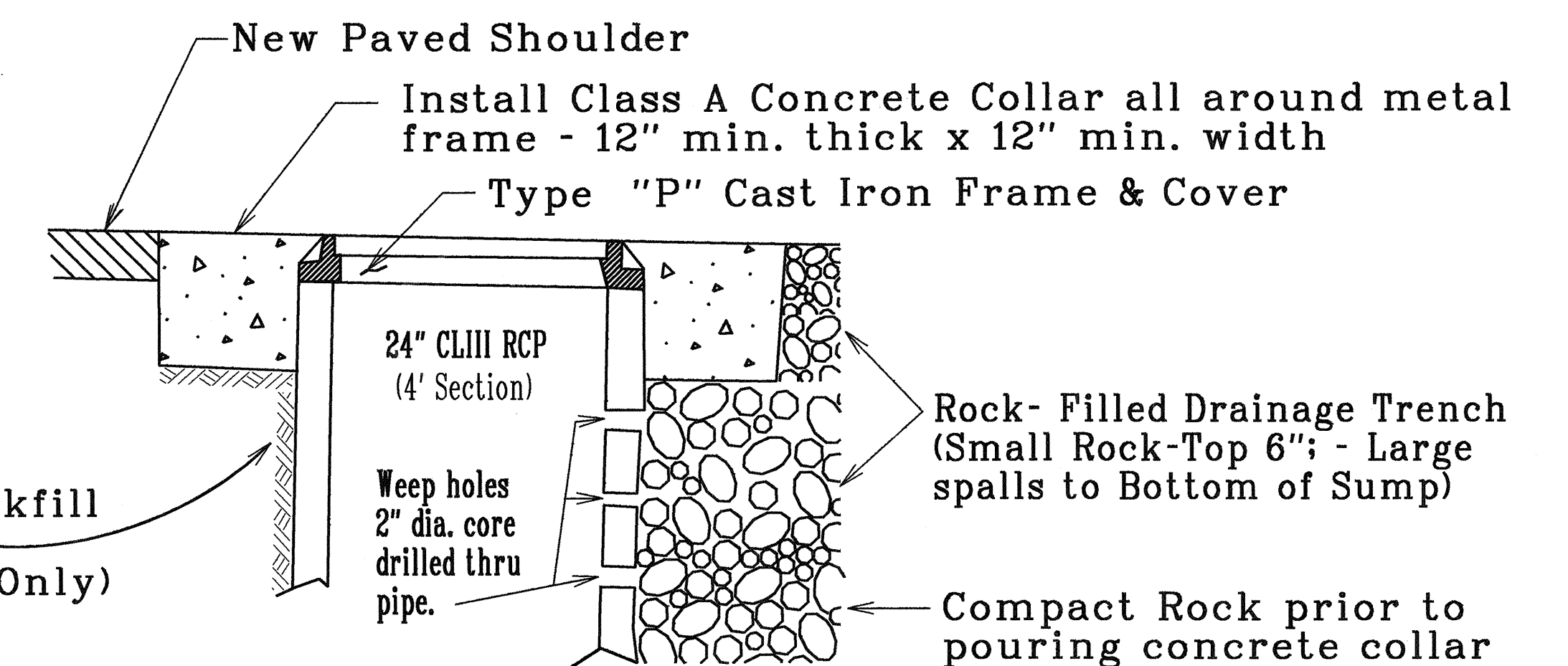
1 1/2" A.C. Pav't. Mix No. IV Resurfacing

Top of Exist. A.C. Pav't

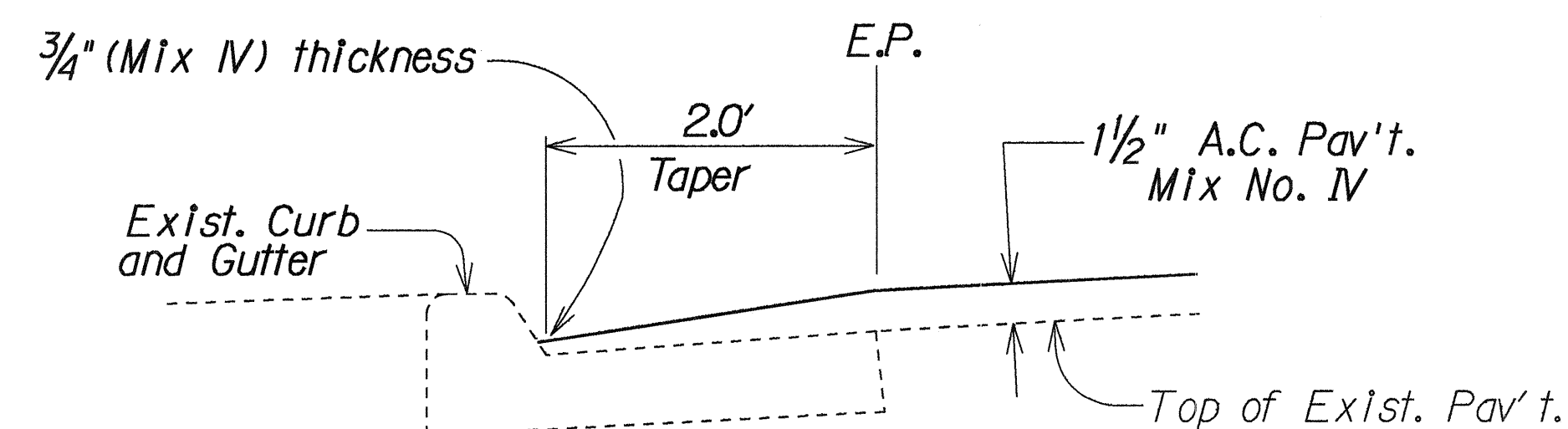
HOBRON ST. & WHARF ST.  
SEE PLANS FOR LOCATION  
Scale: 1/2" = 1'-0"

Dressed Shoulder See Gen. Note No. 10 Plan Sht. No. 3

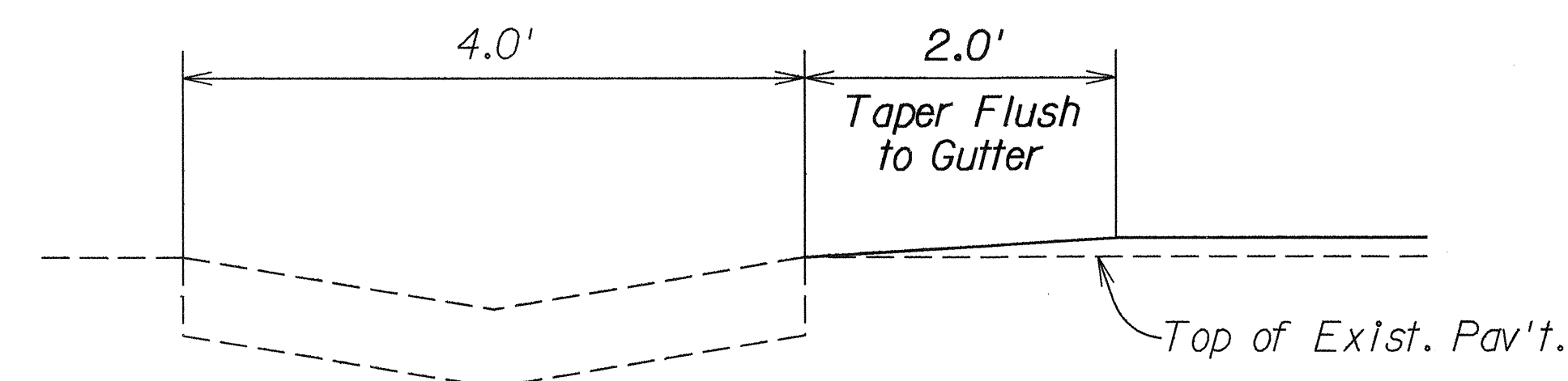
existing ground



SUMP DETAIL AT HOBRON AVE.  
( NO SCALE )



DETAIL "A"  
TYPICAL SECTION  
AT CURB AND GUTTER  
*Not To Scale*



DETAIL "B"  
TYPICAL SECTION AT  
THRU GUTTER  
*Not To Scale*

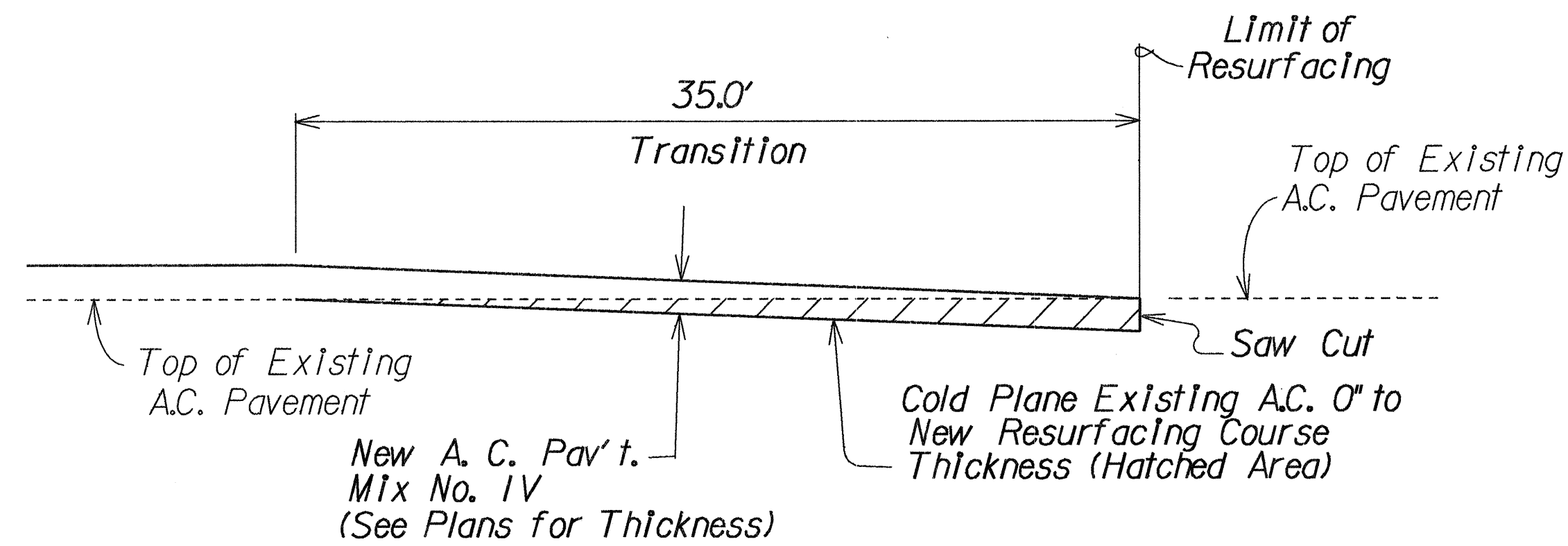
STATE OF HAWAII  
DEPARTMENT OF TRANSPORTATION  
HIGHWAYS DIVISION

HALEAKALA HIGHWAY, HOBRON STREET &  
WHARF STREET RESURFACING  
PROJECT NO. HWY-M-01-91M

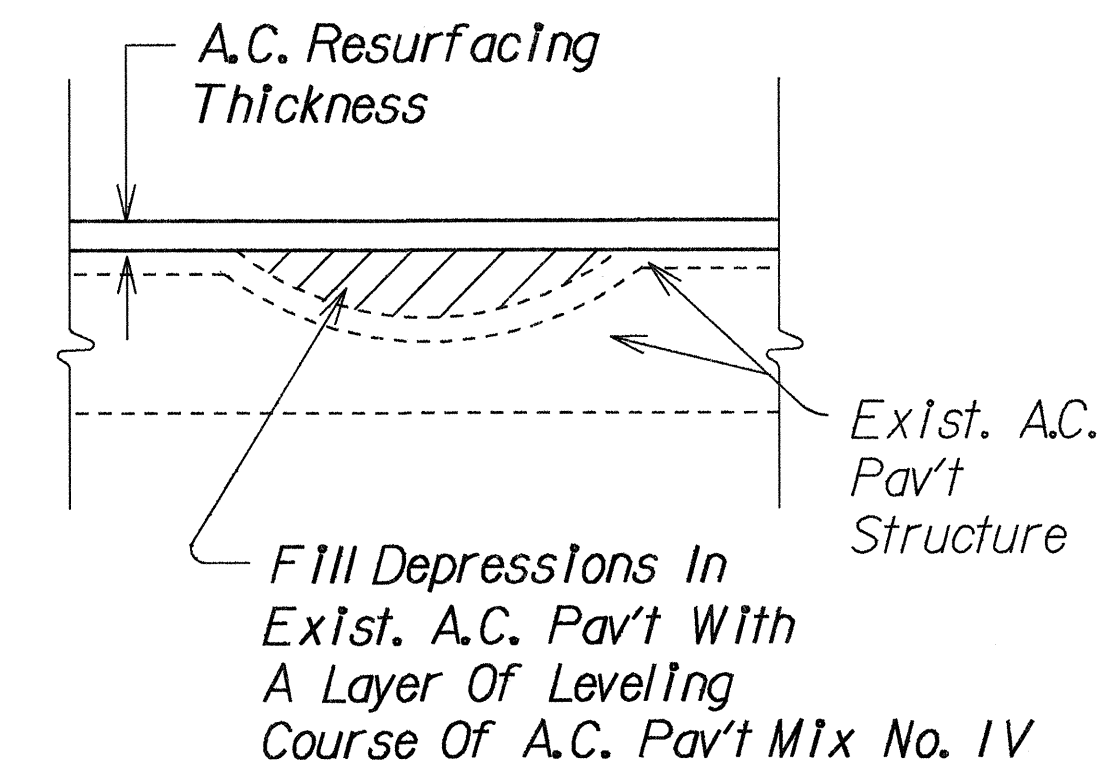
Scale: As Shown Date: March 1991

SHEET No. 1 OF 1 SHEETS

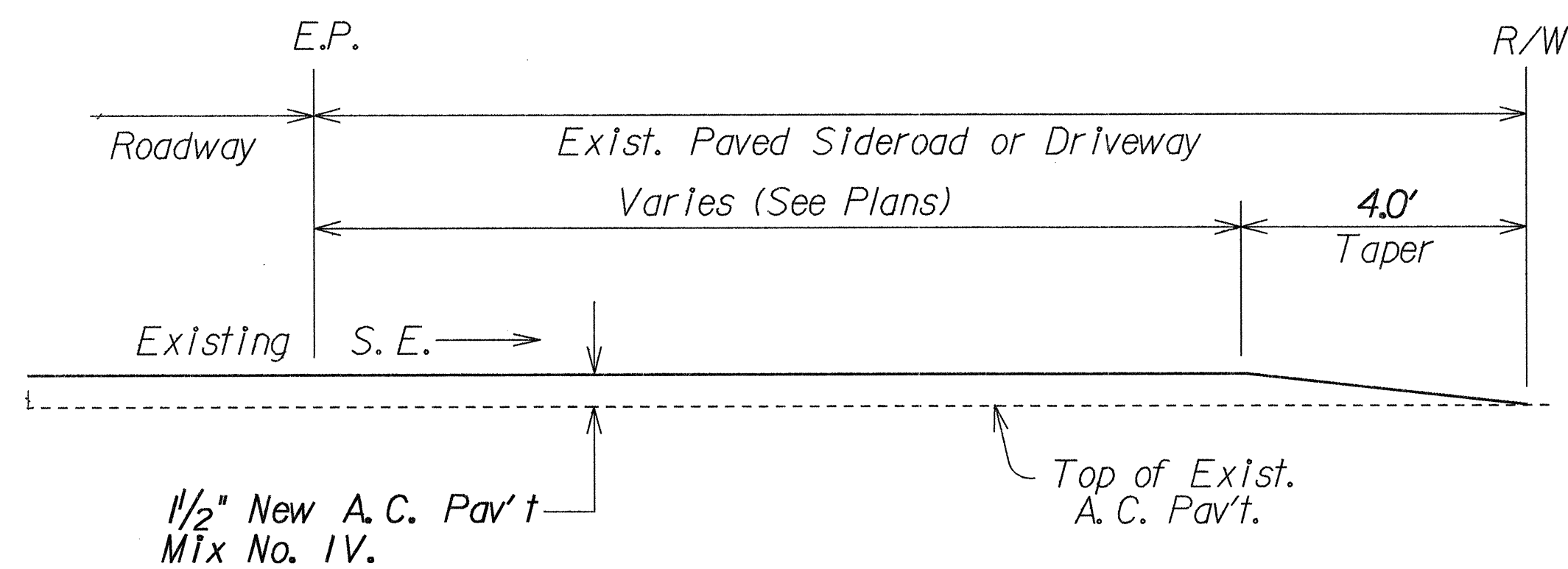
FED. ROAD DIST. NO.	STATE	PROJ. NO.	FISCAL YEAR	SHEET NO.	TOTAL SHEETS
HAWAII	HAW.	HWY-M-01-91M	1991	5	14



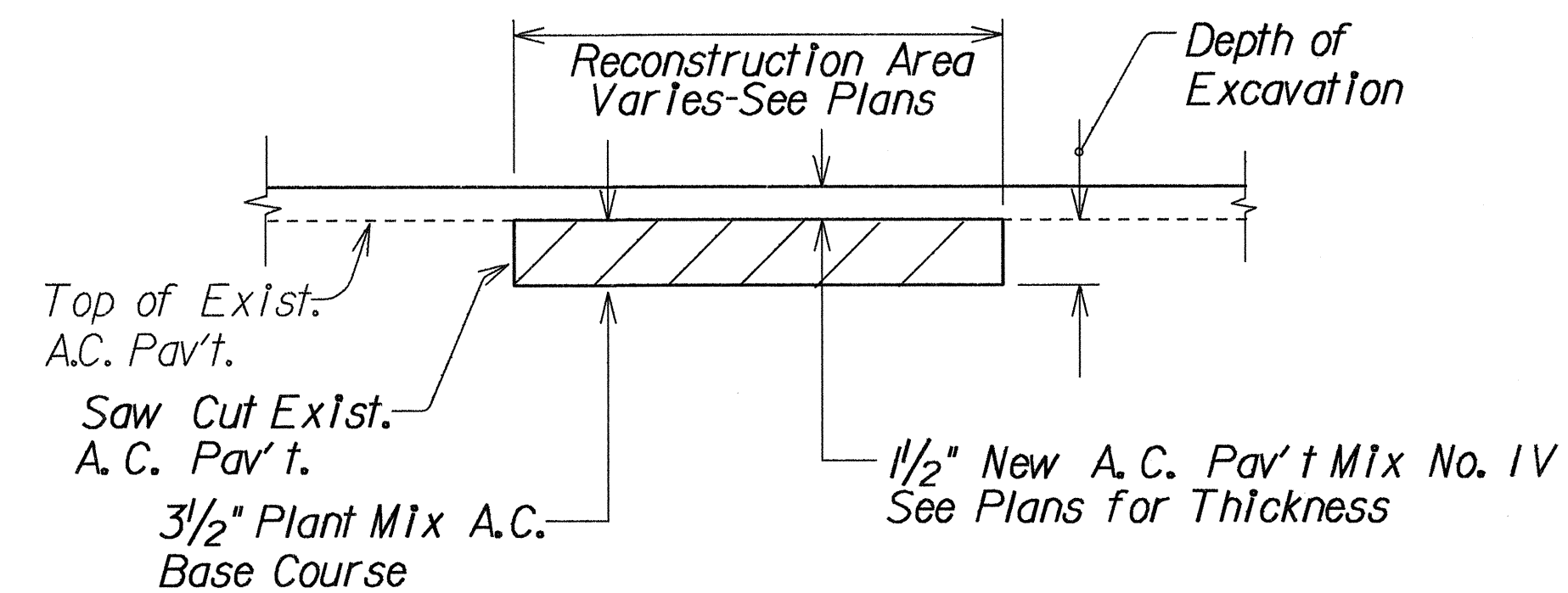
COLD PLANED TRANSITION  
TO EXISTING A.C. PAVEMENT DETAIL  
(BEGINNING, END & SIDE STREETS TRANSITIONS)  
Not To Scale



LEVELING COURSE DETAIL  
Not To Scale



A.C. RESURFACING AT PAVED SIDEROAD  
OR PAVED DRIVEWAY DETAIL  
Not To Scale



A.C. PAVEMENT RECONSTRUCTION DETAIL  
Not To Scale

DATE	_____
SURVEY PLOTTED BY	_____
DESIGNED BY	_____
TRACED BY	_____
NOTE BOOK	_____
QUANTITIES BY	_____
CHECKED BY	_____
No.	_____

STATE OF HAWAII DEPARTMENT OF TRANSPORTATION HIGHWAYS DIVISION	
<b><u>TYPICAL DETAILS</u></b>	
<b><u>HALEAKALA HIGHWAY, HOBSON STREET &amp; WHARF STREET RESURFACING</u></b>	
<b><u>PROJECT NO. HWY-M-01-91M</u></b>	
Scale: As Shown	Date: March, 1991
SHEET No. 1 OF 1 SHEETS	

AS-BUILT

5