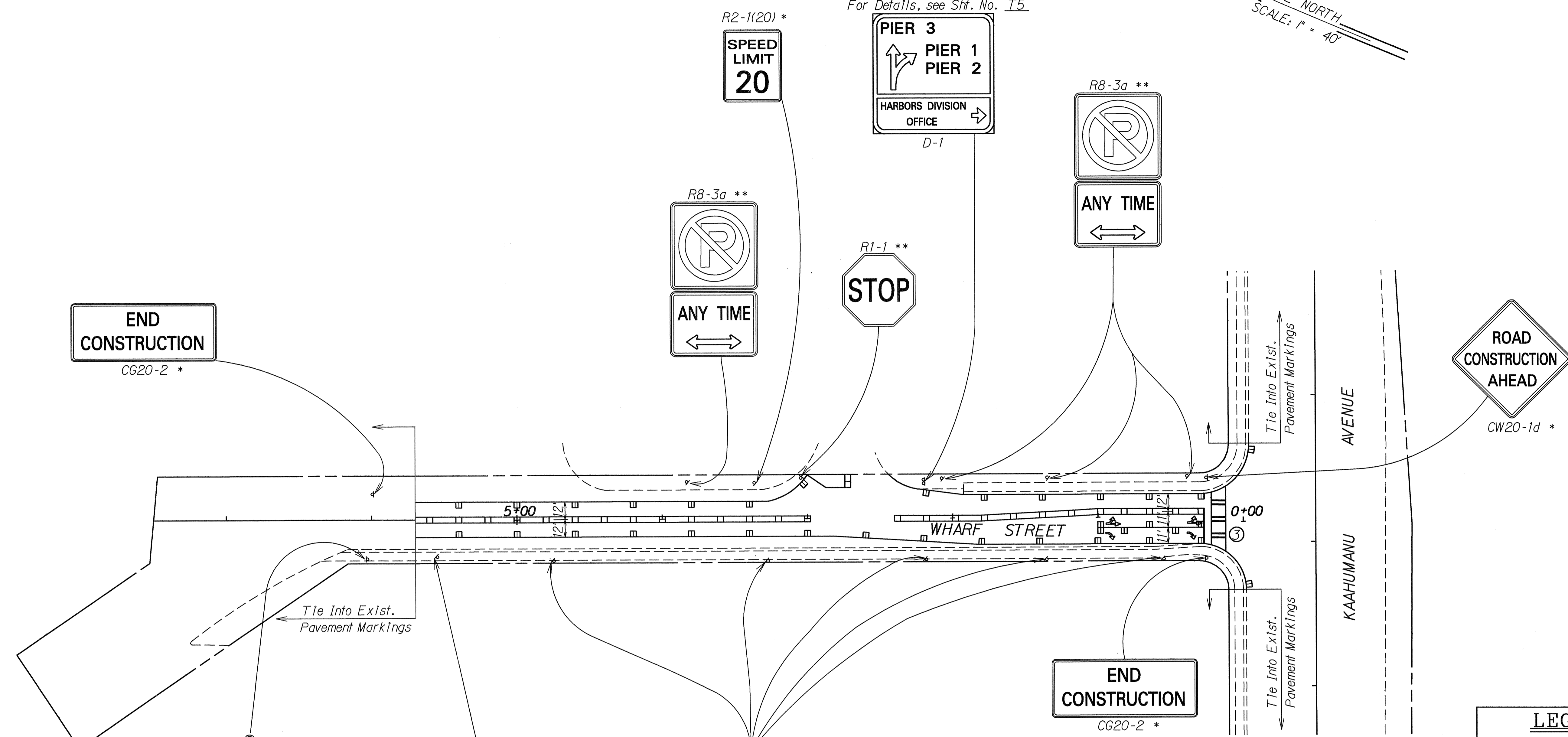


FED. ROAD DIST. NO.	STATE	PROJ. NO.	FISCAL YEAR	SHEET NO.	TOTAL SHEETS
HAWAII	HAW.	HWY-M-01-91M	1991	10	14

Remove Ex1st. Sign w/ Posts & Install New Sign w/ Posts For Details, see Sht. No. T5

TRUE NORTH  
SCALE: 1" = 40'



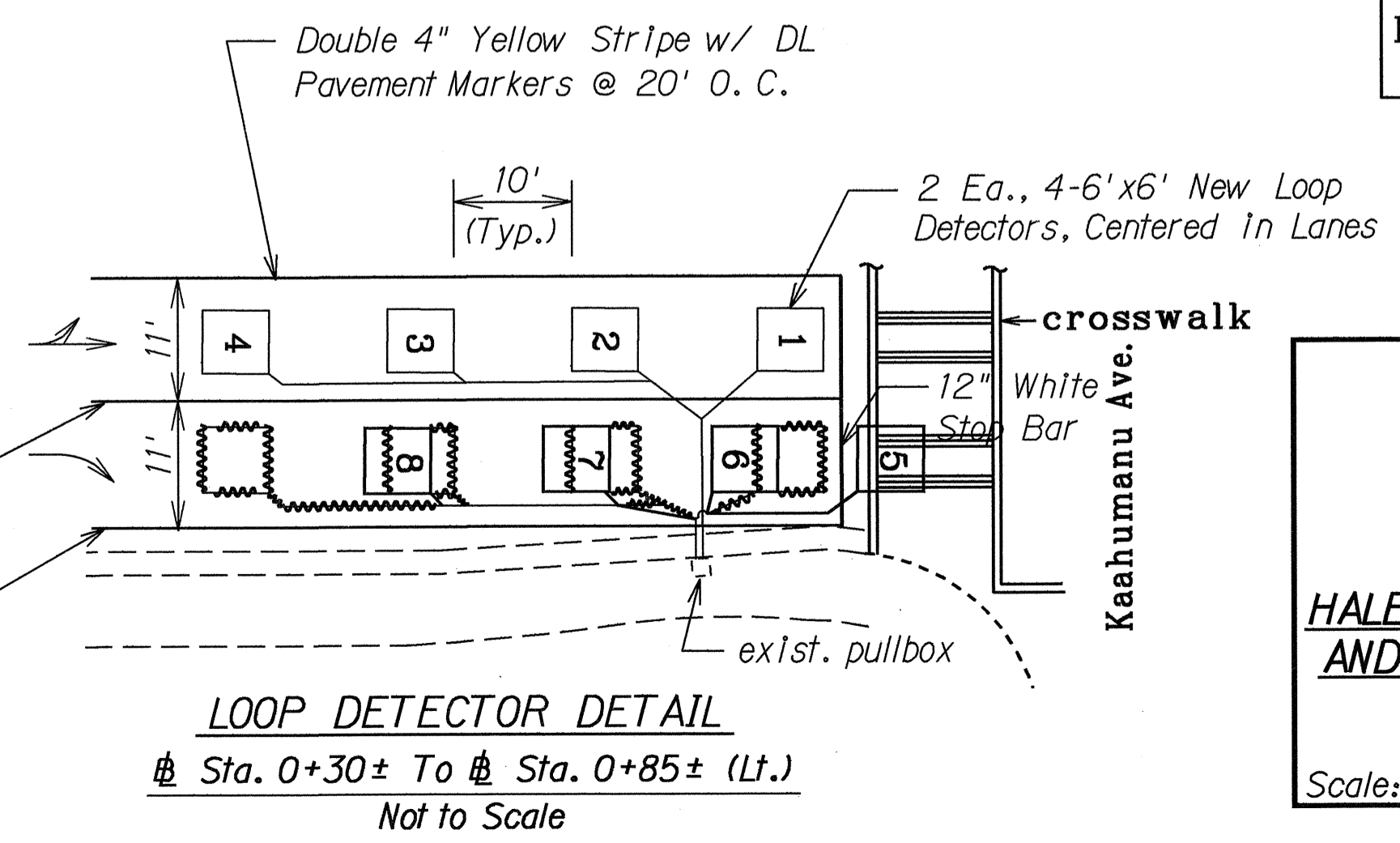
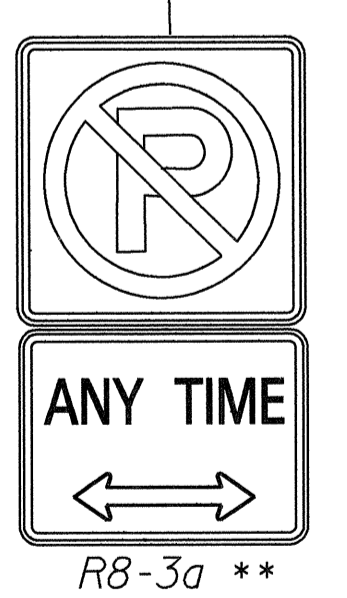
**LEGEND FOR AS-BUILT POSTINGS**

	Squiggly line for as-built deletion
	Double line for as-built deletion
Roadway	Text for as-built posting

SURVEY PLOTTED BY	DATE
DRAWN BY	
TRACED BY	
QUANTITIES BY	
CHECKED BY	
ORIGINAL PLAN	
NOTE BOOK	
No.	

**NOTE**

- \* Install New Sign w/ Post
- \*\* Remove Ex1st. Sign w/ Post & Install New Sign w/ Post
- \*\*\* Remove Ex1st. Sign w/ Post



STATE OF HAWAII  
DEPARTMENT OF TRANSPORTATION  
HIGHWAYS DIVISION

**SIGNING & PAVEMENT MARKING PLAN**

HALEAKALA HIGHWAY, WHARF STREET AND HOBORN STREET RESURFACING

PROJECT NO. HWY-M-01-91M

Scale: 1" = 40' Date: Jan., 1991

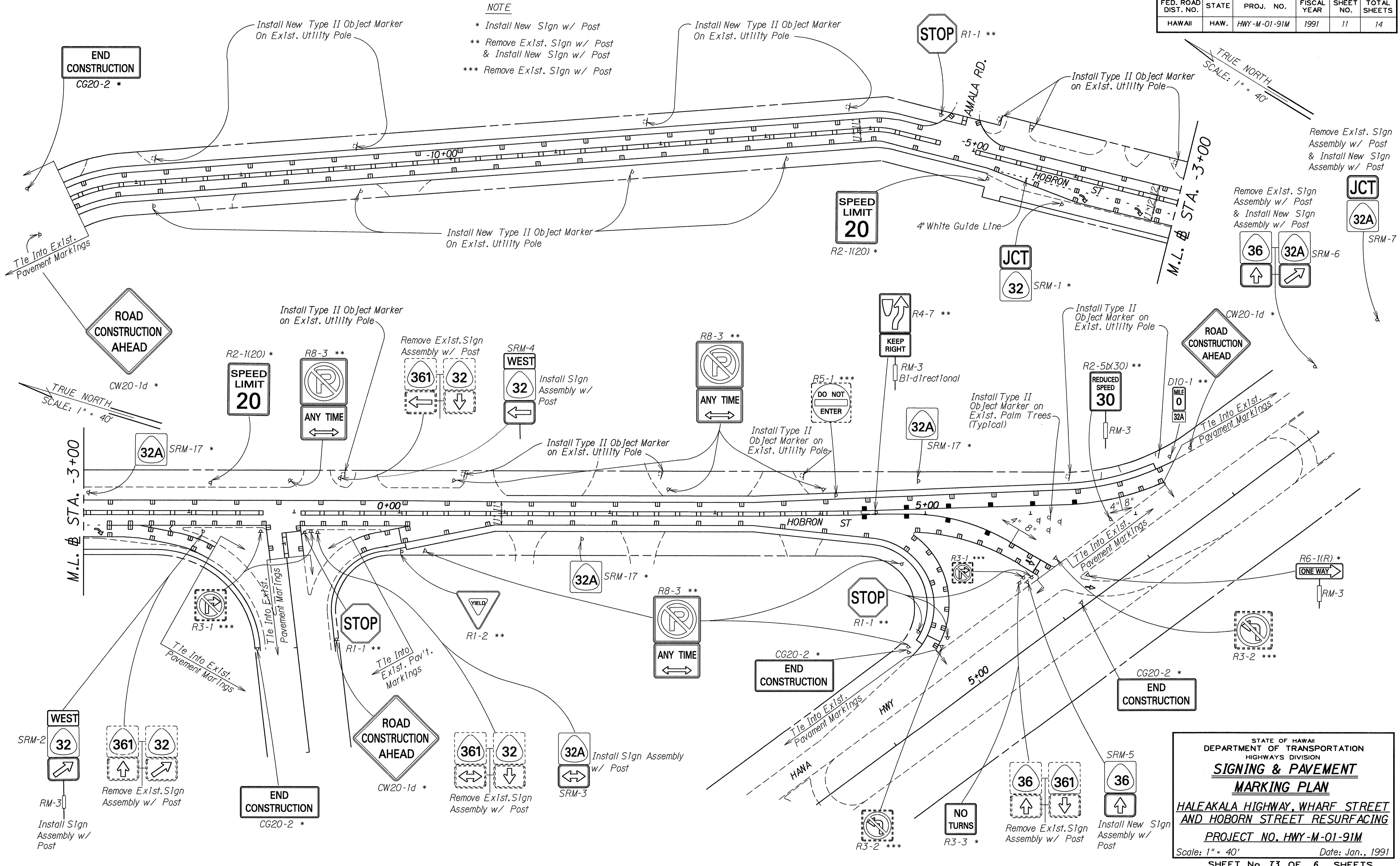
SHEET No. T2 OF 6 SHEETS

FED. ROAD DIST. NO.	STATE	PROJ. NO.	FISCAL YEAR	SHEET NO.	TOTAL SHEETS
HAWAII	HAW.	HWY-M-01-91M	1991	11	14

**NOTE**

- \* Install New Sign w/ Post
- \*\* Remove Exist. Sign w/ Post & Install New Sign w/ Post
- \*\*\* Remove Exist. Sign w/ Post

TRUE NORTH  
SCALE: 1" = 40'



SURVEY PLOTTED BY	DATE
DRAWN BY	
DESIGNED BY	
QUANTITIES BY	
CHECKED BY	
ORIGINAL PLAN	
NOTE BOOK	
DATE	

STATE OF HAWAII  
DEPARTMENT OF TRANSPORTATION  
HIGHWAYS DIVISION

**SIGNING & PAVEMENT MARKING PLAN**

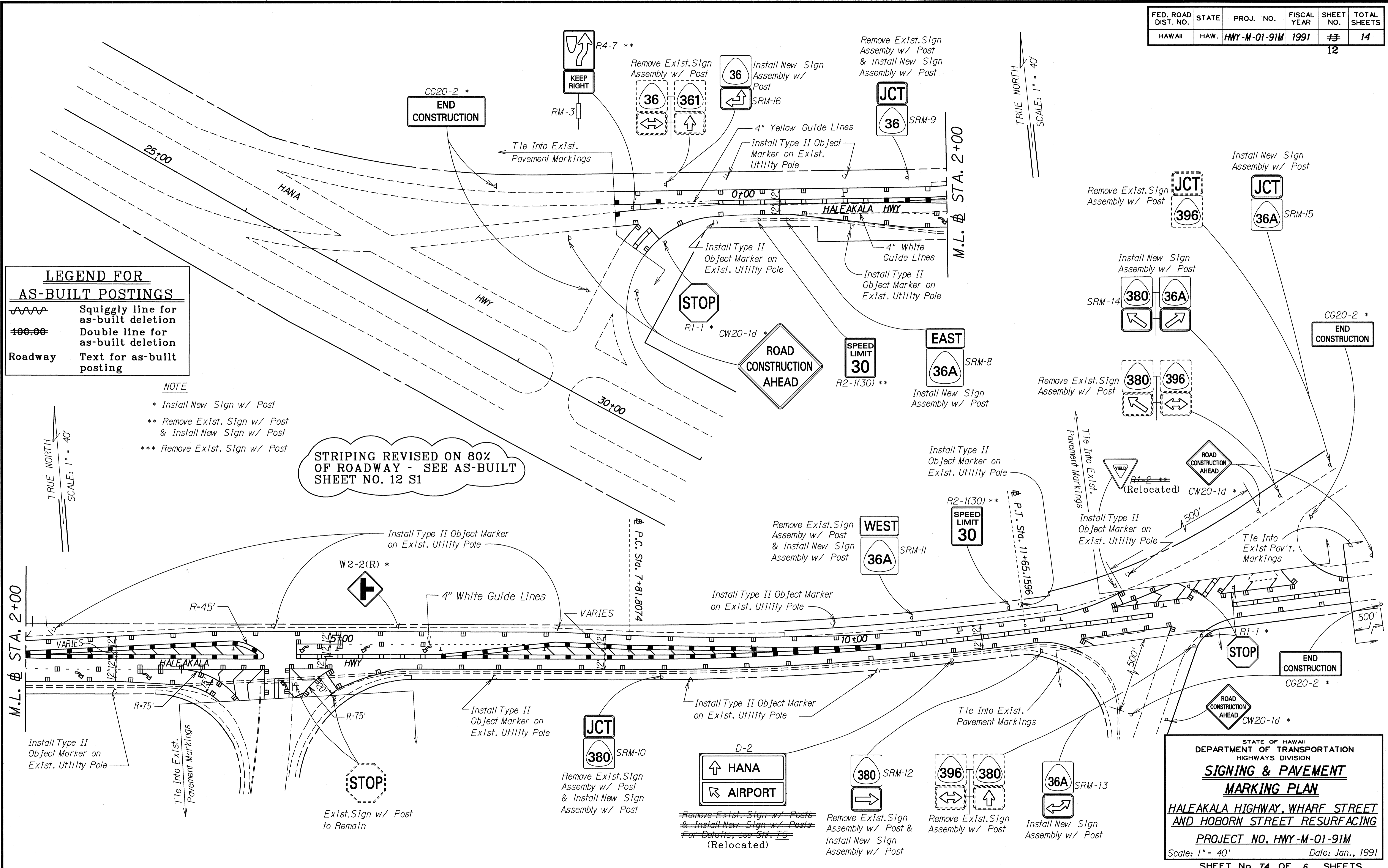
**HALEKALA HIGHWAY, WHARF STREET AND HOBORN STREET RESURFACING**

PROJECT NO. HWY-M-01-91M

Scale: 1" = 40' Date: Jan., 1991

SHEET No. 11 OF 6 SHEETS

FED. ROAD DIST. NO.	STATE	PROJ. NO.	FISCAL YEAR	SHEET NO.	TOTAL SHEETS
HAWAII	HAW.	HWY-M-01-91M	1991	12	14



**LEGEND FOR AS-BUILT POSTINGS**

~~~~~ Squiggly line for as-built deletion

==== Double line for as-built deletion

Roadway Text for as-built posting

**NOTE**

\* Install New Sign w/ Post

\*\* Remove Exist. Sign w/ Post & Install New Sign w/ Post

\*\*\* Remove Exist. Sign w/ Post

STRIPING REVISED ON 80% OF ROADWAY - SEE AS-BUILT SHEET NO. 12 S1

|                   |  |
|-------------------|--|
| DATE              |  |
| SURVEY PLOTTED BY |  |
| DRAWN BY          |  |
| TRACED BY         |  |
| QUANTITIES BY     |  |
| CHECKED BY        |  |
| ORIGINAL PLAN     |  |
| NOTE BOOK         |  |
| NO.               |  |

STATE OF HAWAII  
DEPARTMENT OF TRANSPORTATION  
HIGHWAYS DIVISION

**SIGNING & PAVEMENT MARKING PLAN**

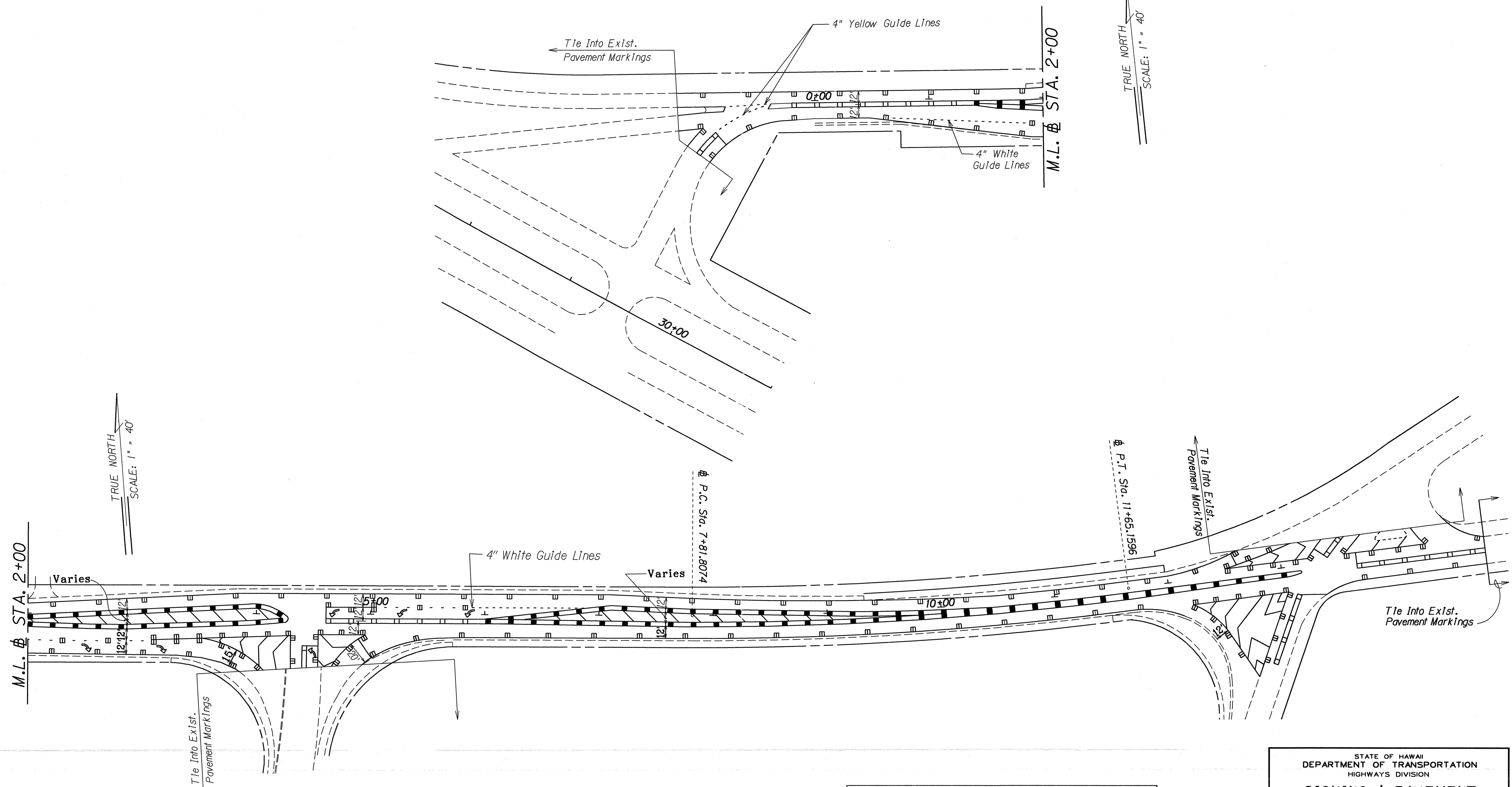
HALEAKALA HIGHWAY, WHARF STREET AND HOBORN STREET RESURFACING

PROJECT NO. HWY-M-01-91M

Scale: 1" = 40' Date: Jan., 1991

SHEET No. 14 OF 6 SHEETS

| FED. ROAD DIST. NO. | STATE | PROJ. NO.    | FISCAL YEAR | SHEET NO. | TOTAL SHEETS |
|---------------------|-------|--------------|-------------|-----------|--------------|
| HAWAII              | HAW.  | HWY-M-01-91M | 1991        | 12SI      | 14           |



|                   |  |
|-------------------|--|
| DATE              |  |
| SURVEY PLOTTED BY |  |
| DRAWN BY          |  |
| DESIGNED BY       |  |
| NOTE BOOK         |  |
| QUANTITIES BY     |  |
| CHECKED BY        |  |
| N.                |  |

| LEGEND FOR AS-BUILT POSTINGS |                                     |
|------------------------------|-------------------------------------|
|                              | Squiggly line for as-built deletion |
|                              | Double line for as-built deletion   |
| Roadway                      | Text for as-built posting           |

Note: This tracing prepared during "As-Built" posting.

STATE OF HAWAII  
DEPARTMENT OF TRANSPORTATION  
HIGHWAYS DIVISION

**SIGNING & PAVEMENT MARKING PLAN**

HALEAKALA HIGHWAY, WHARF STREET AND HOBORN STREET RESURFACING PROJECT NO. HWY-M-01-91M

Scale: 1"=40' Date: Nov., 1992

SHEET No. OF SHEETS