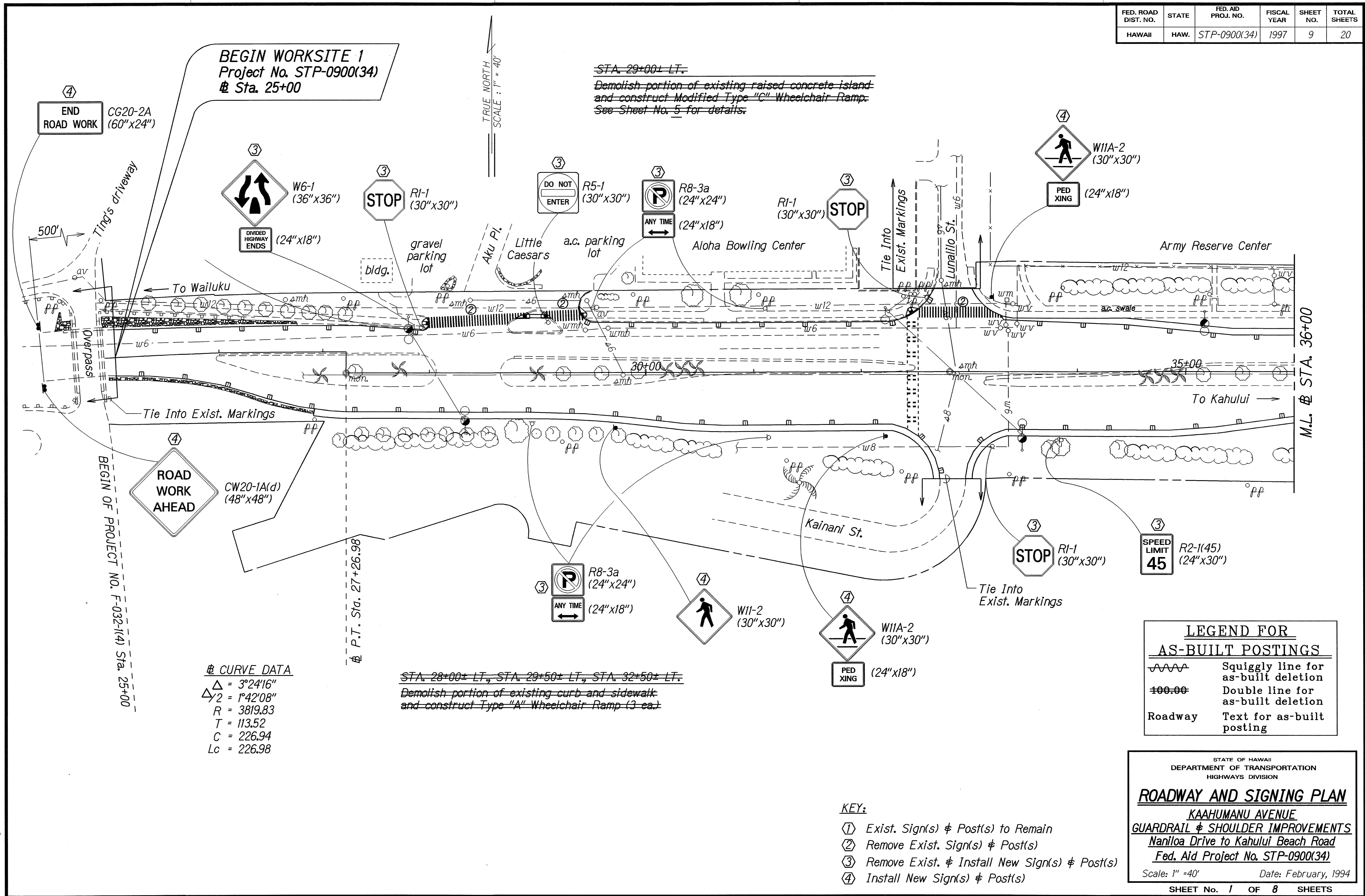


FED. ROAD DIST. NO.	STATE	FED. AID PROJ. NO.	FISCAL YEAR	SHEET NO.	TOTAL SHEETS
HAWAII	HAW.	STP-0900(34)	1997	9	20



BEGIN WORKSITE 1
Project No. STP-0900(34)
Sta. 25+00

~~STA. 29+00+ LT.~~
~~Demolish portion of existing raised concrete island and construct Modified Type "C" Wheelchair Ramp. See Sheet No. 5 for details.~~

~~STA. 28+00+ LT., STA. 29+50+ LT., STA. 32+50+ LT.~~
~~Demolish portion of existing curb and sidewalk and construct Type "A" Wheelchair Ramp (3 ea.)~~

CURVE DATA
 $\Delta = 3^{\circ}24'16''$
 $\Delta/2 = 1^{\circ}42'08''$
 $R = 3819.83$
 $T = 113.52$
 $C = 226.94$
 $L_c = 226.98$

LEGEND FOR AS-BUILT POSTINGS

	Squiggly line for as-built deletion
	Double line for as-built deletion
Roadway	Text for as-built posting

STATE OF HAWAII
DEPARTMENT OF TRANSPORTATION
HIGHWAYS DIVISION

ROADWAY AND SIGNING PLAN
KAAHUMANU AVENUE
GUARDRAIL & SHOULDER IMPROVEMENTS
Naniloa Drive to Kahului Beach Road
Fed. Aid Project No. STP-0900(34)

Scale: 1" = 40' Date: February, 1994

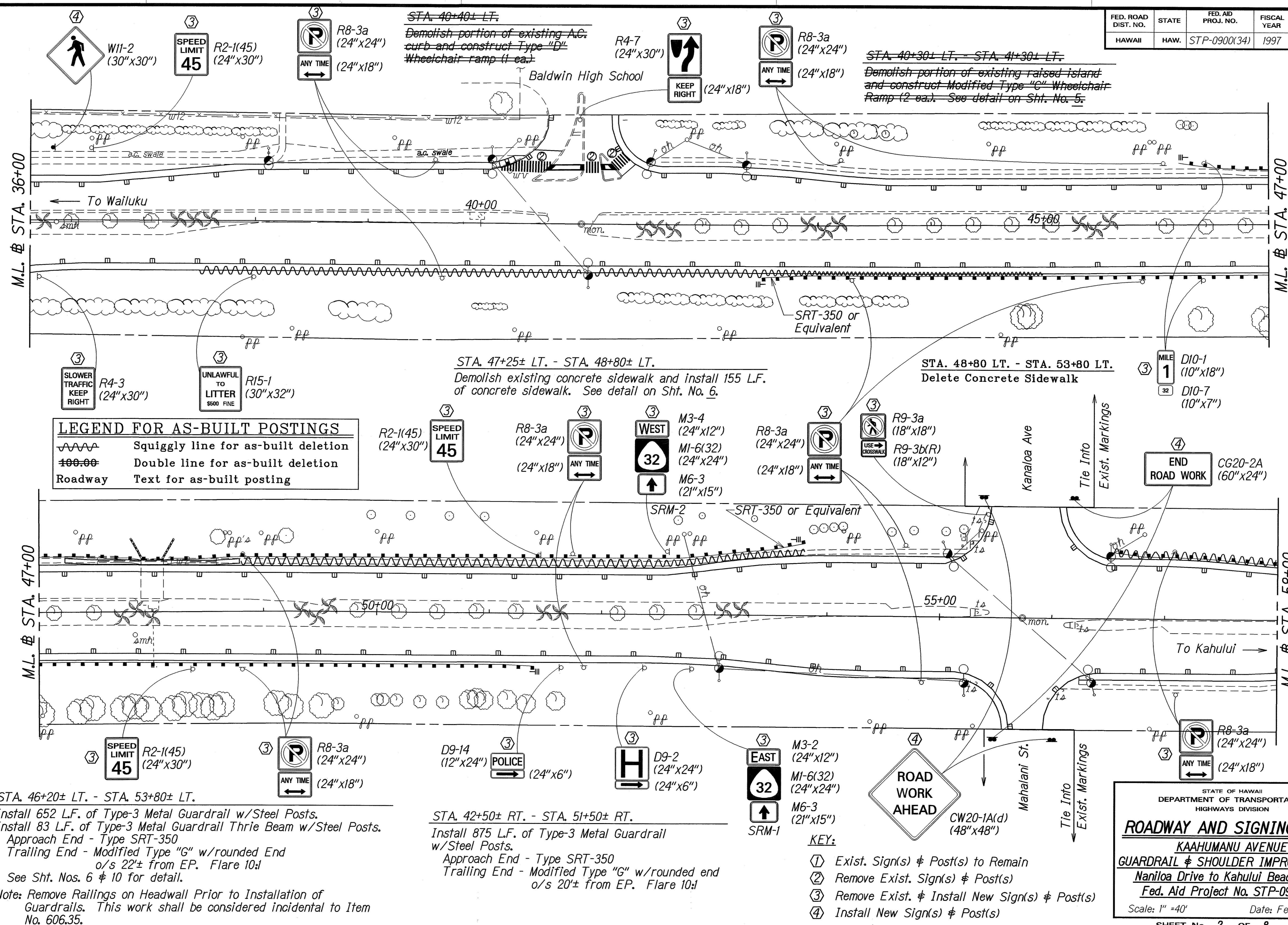
SHEET No. 1 OF 8 SHEETS

- KEY:**
- ① Exist. Sign(s) & Post(s) to Remain
 - ② Remove Exist. Sign(s) & Post(s)
 - ③ Remove Exist. & Install New Sign(s) & Post(s)
 - ④ Install New Sign(s) & Post(s)

SURVEY PLOTTED BY	DATE
DRAWN BY	
DESIGNED BY	
NOTE BOOK	
QUANTITIES BY	
CHECKED BY	

"AS-BUILT"

FED. ROAD DIST. NO.	STATE	FED. AID PROJ. NO.	FISCAL YEAR	SHEET NO.	TOTAL SHEETS
HAWAII	HAW.	STP-0900(34)	1997	10	20



LEGEND FOR AS-BUILT POSTINGS

~~~~~ Squiggly line for as-built deletion  
 =00-00 Double line for as-built deletion  
 Roadway Text for as-built posting

STA. 46+20± LT. - STA. 53+80± LT.  
 Install 652 L.F. of Type-3 Metal Guardrail w/Steel Posts.  
 Install 83 L.F. of Type-3 Metal Guardrail Thrie Beam w/Steel Posts.  
 Approach End - Type SRT-350  
 Trailing End - Modified Type "G" w/rounded End  
 o/s 22± from EP. Flare 10!  
 See Sht. Nos. 6 & 10 for detail.  
 Note: Remove Railings on Headwall Prior to Installation of  
 Guardrails. This work shall be considered incidental to Item  
 No. 606.35.

STA. 42+50± RT. - STA. 51+50± RT.  
 Install 875 L.F. of Type-3 Metal Guardrail  
 w/Steel Posts.  
 Approach End - Type SRT-350  
 Trailing End - Modified Type "G" w/rounded end  
 o/s 20± from EP. Flare 10!

- KEY:**
- ① Exist. Sign(s) & Post(s) to Remain
  - ② Remove Exist. Sign(s) & Post(s)
  - ③ Remove Exist. & Install New Sign(s) & Post(s)
  - ④ Install New Sign(s) & Post(s)

|                   |      |         |
|-------------------|------|---------|
| SURVEY PLOTTED BY | DATE | 1/24/92 |
| DESIGNED BY       |      |         |
| QUANTITIES BY     |      |         |
| CHECKED BY        |      |         |

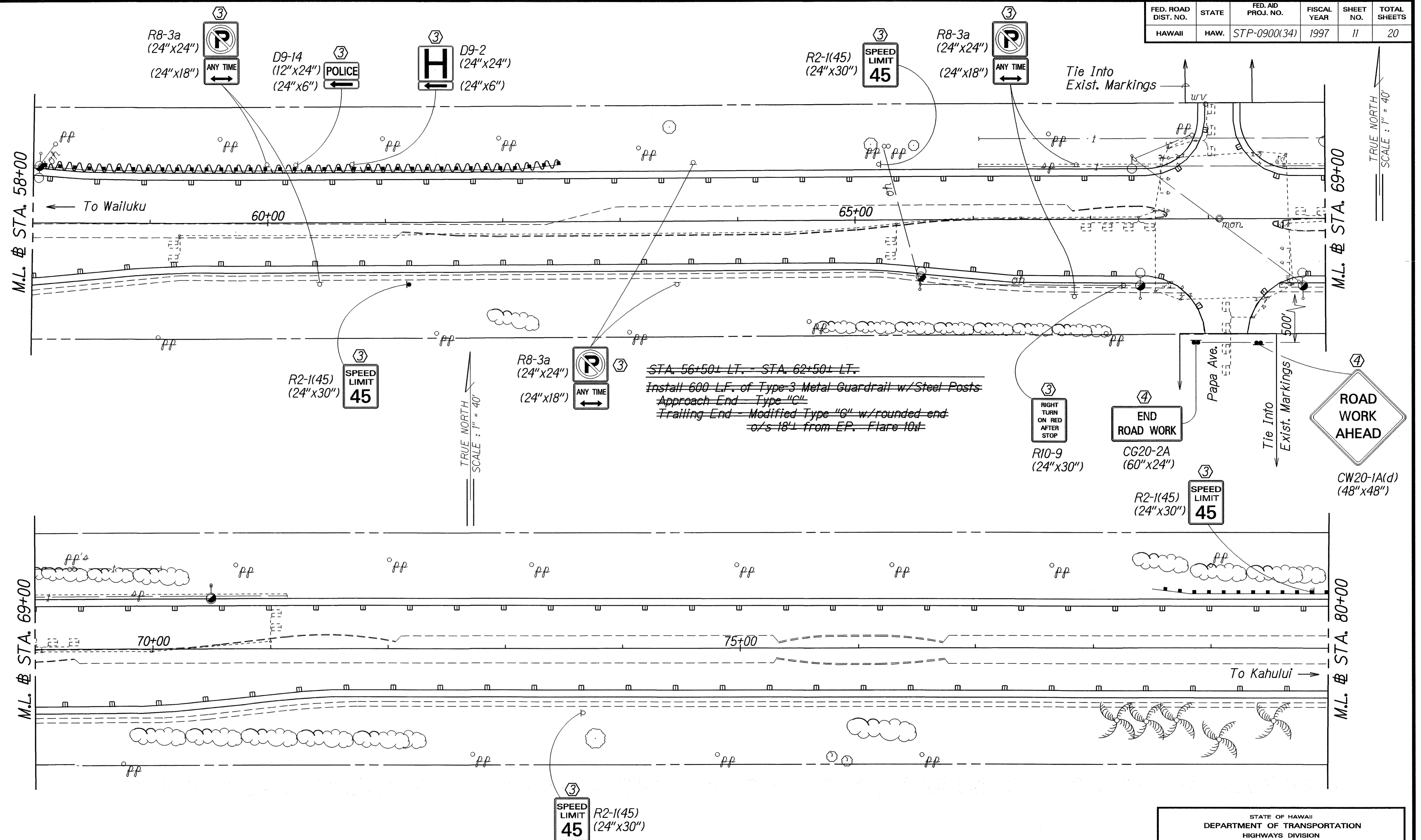
STATE OF HAWAII  
 DEPARTMENT OF TRANSPORTATION  
 HIGHWAYS DIVISION

**ROADWAY AND SIGNING PLAN**  
 KAAHUMANU AVENUE  
 GUARDRAIL & SHOULDER IMPROVEMENTS  
 Naniioa Drive to Kahului Beach Road  
 Fed. Aid Project No. STP-0900(34)

Scale: 1" = 40' Date: February, 1994

"AS-BUILT"

| FED. ROAD DIST. NO. | STATE | FED. AID PROJ. NO. | FISCAL YEAR | SHEET NO. | TOTAL SHEETS |
|---------------------|-------|--------------------|-------------|-----------|--------------|
| HAWAII              | HAW.  | STP-0900(34)       | 1997        | 11        | 20           |



STA. 56+50+ LT. - STA. 62+50+ LT.  
 Install 600 L.F. of Type 3 Metal Guardrail w/ Steel Posts  
 Approach End Type "C"  
 Trailing End Modified Type "G" w/ rounded end  
 o/s 18' L from EP. Flare 10'

| LEGEND FOR AS-BUILT POSTINGS |                                     |
|------------------------------|-------------------------------------|
|                              | Squiggly line for as-built deletion |
|                              | Double line for as-built deletion   |
| Roadway                      | Text for as-built posting           |

- KEY:**
- ① Exist. Sign(s) & Post(s) to Remain
  - ② Remove Exist. Sign(s) & Post(s)
  - ③ Remove Exist. & Install New Sign(s) & Post(s)
  - ④ Install New Sign(s) & Post(s)

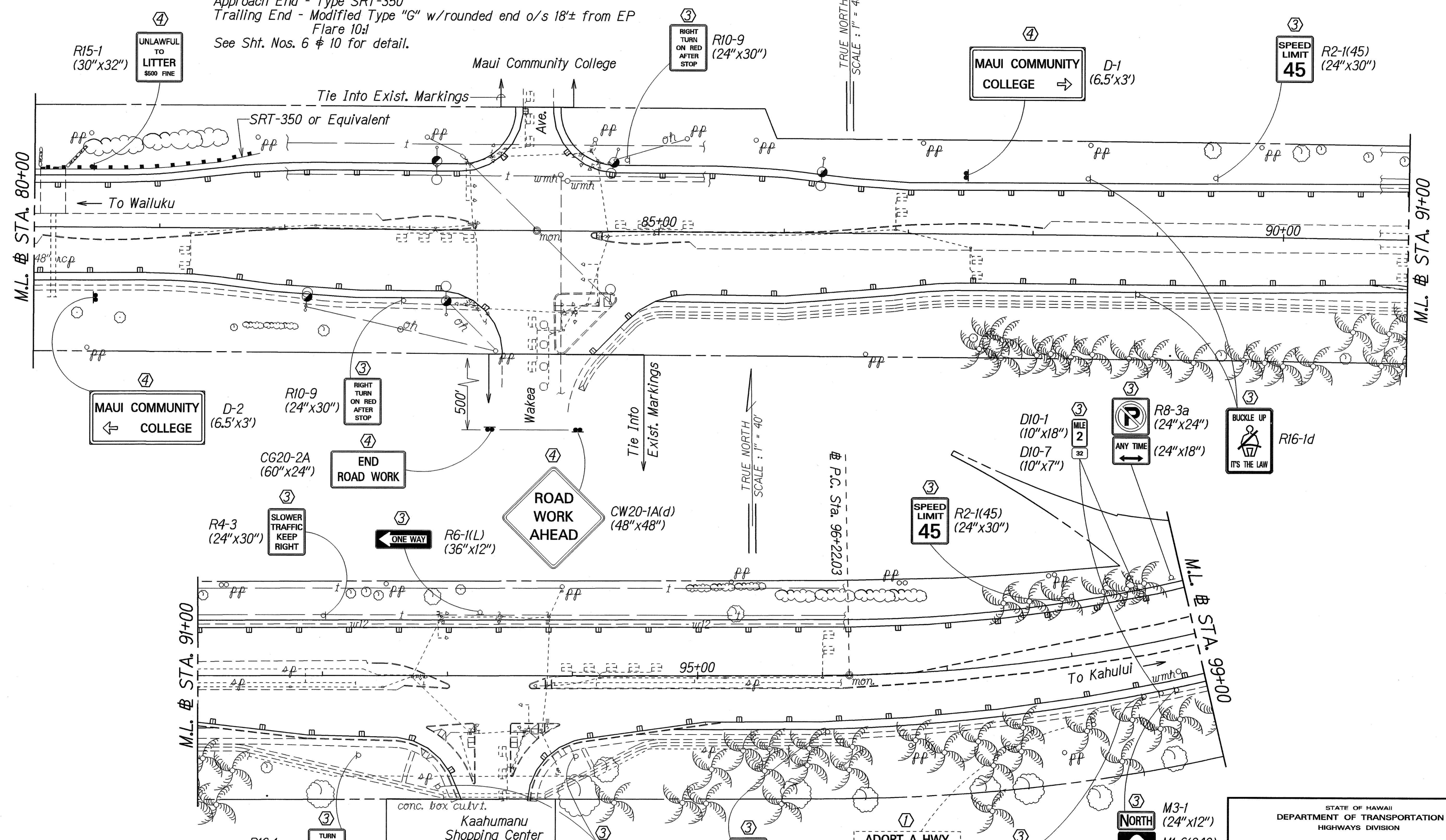
STATE OF HAWAII  
 DEPARTMENT OF TRANSPORTATION  
 HIGHWAYS DIVISION  
**ROADWAY AND SIGNING PLAN**  
 KAAHUMANU AVENUE  
 GUARDRAIL & SHOULDER IMPROVEMENTS  
 Nanihoa Drive to Kahului Beach Road  
 Fed. Aid Project No. STP-0900(34)  
 Scale: 1" = 40' Date: February, 1994  
 SHEET No. 3 OF 8 SHEETS

|                   |      |           |
|-------------------|------|-----------|
| SURVEY PLOTTED BY | DATE | Feb. 1994 |
| DRAWN BY          |      |           |
| DESIGNED BY       |      |           |
| QUANTITIES BY     |      |           |
| CHECKED BY        |      |           |

"AS-BUILT"

| FED. ROAD DIST. NO. | STATE | FED. AID PROJ. NO. | FISCAL YEAR | SHEET NO. | TOTAL SHEETS |
|---------------------|-------|--------------------|-------------|-----------|--------------|
| HAWAII              | HAW.  | STP-0900(34)       | 1997        | 12        | 20           |

STA. 78+50± LT. - STA. 81+80± LT.  
 Install 222 L.F. of Type-3 Metal Guardrail w/Steel Posts.  
 Install 83 L.F. of Type-3 Metal Guardrail Thrie Beam w/Steel Posts.  
 Approach End - Type SRT-350  
 Trailing End - Modified Type "G" w/rounded end o/s 18± from EP Flare 10±  
 See Sht. Nos. 6 & 10 for detail.



- KEY:**
- ① Exist. Sign(s) & Post(s) to Remain
  - ② Remove Exist. Sign(s) & Post(s)
  - ③ Remove Exist. & Install New Sign(s) & Post(s)
  - ④ Install New Sign(s) & Post(s)

|                   |            |
|-------------------|------------|
| SURVEY PLOTTED BY | DATE       |
| DESIGNED BY       | REVISED BY |
| NOTED BY          | CHECKED BY |
| QUANTITIES BY     |            |
| DESIGNED BY       |            |
| CHECKED BY        |            |

STATE OF HAWAII  
 DEPARTMENT OF TRANSPORTATION  
 HIGHWAYS DIVISION

**ROADWAY AND SIGNING PLAN**  
 KAAHUMANU AVENUE  
 GUARDRAIL & SHOULDER IMPROVEMENTS  
 Naniloa Drive to Kahului Beach Road  
 Fed. Aid Project No. STP-0900(34)

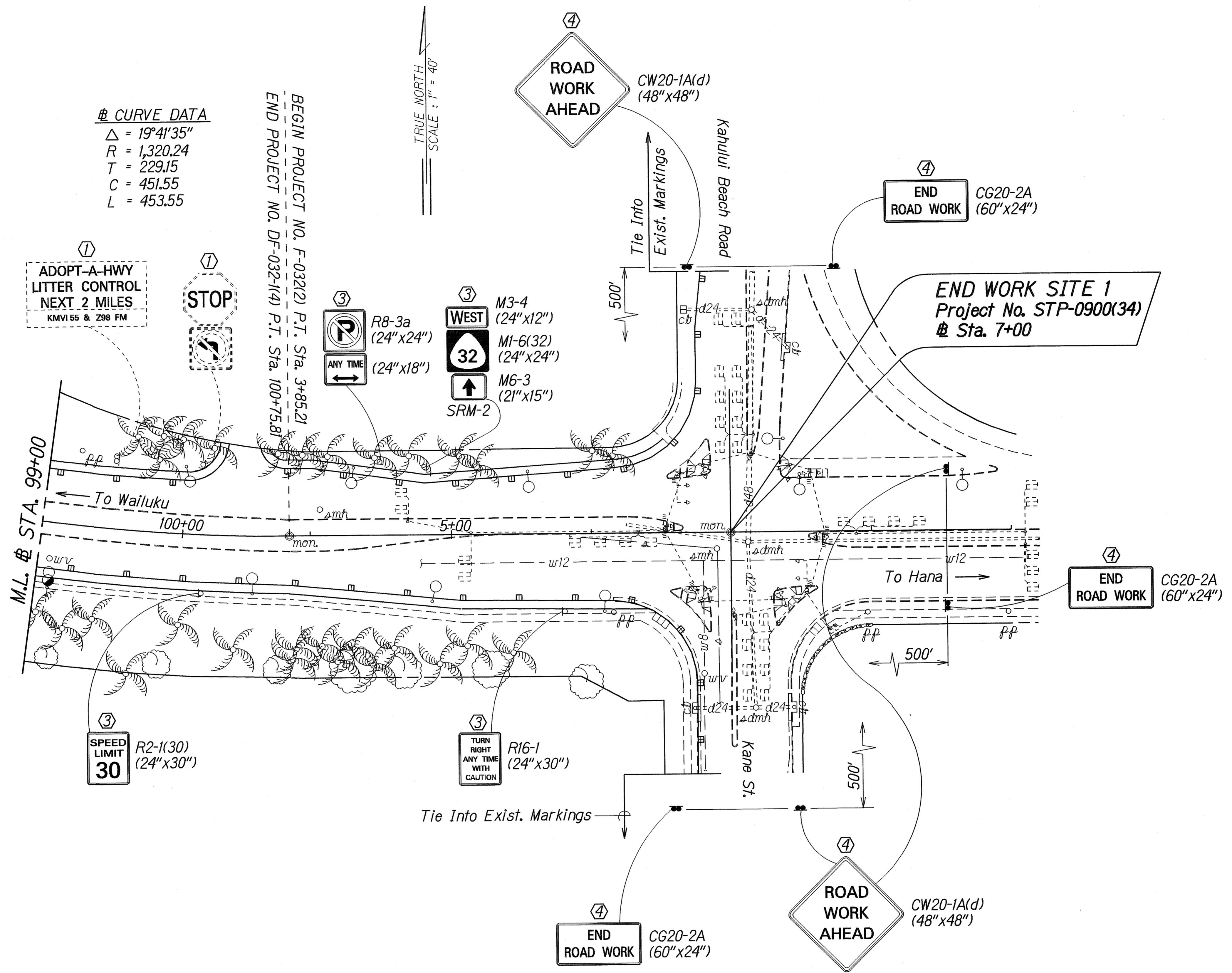
Scale: 1" = 40'      Date: February, 1994  
 SHEET No. 4 OF 8 SHEETS

| FED. ROAD DIST. NO. | STATE | FED. AID PROJ. NO. | FISCAL YEAR | SHEET NO. | TOTAL SHEETS |
|---------------------|-------|--------------------|-------------|-----------|--------------|
| HAWAII              | HAW.  | STP-0900(34)       | 1997        | 13        | 20           |

**# CURVE DATA**  
 $\Delta = 19^{\circ}41'35''$   
 $R = 1,320.24$   
 $T = 229.15$   
 $C = 451.55$   
 $L = 453.55$

BEGIN PROJECT NO. F-03212 P.T. Sta. 3+85.21  
 END PROJECT NO. DF-032-114 P.T. Sta. 100+75.81

TRUE NORTH  
 SCALE: 1" = 40'



DATE: Feb. 1994  
 SURVEY BLOTTED BY: [Name]  
 PLAN DRAWN BY: [Name]  
 NEW BOOK DESIGNED BY: [Name]  
 QUANTITIES BY: [Name]  
 CHECKED BY: [Name]

- KEY:**
- ① Exist. Sign(s) & Post(s) to Remain
  - ② Remove Exist. Sign(s) & Post(s)
  - ③ Remove Exist. & Install New Sign(s) & Post(s)
  - ④ Install New Sign(s) & Post(s)

STATE OF HAWAII  
 DEPARTMENT OF TRANSPORTATION  
 HIGHWAYS DIVISION

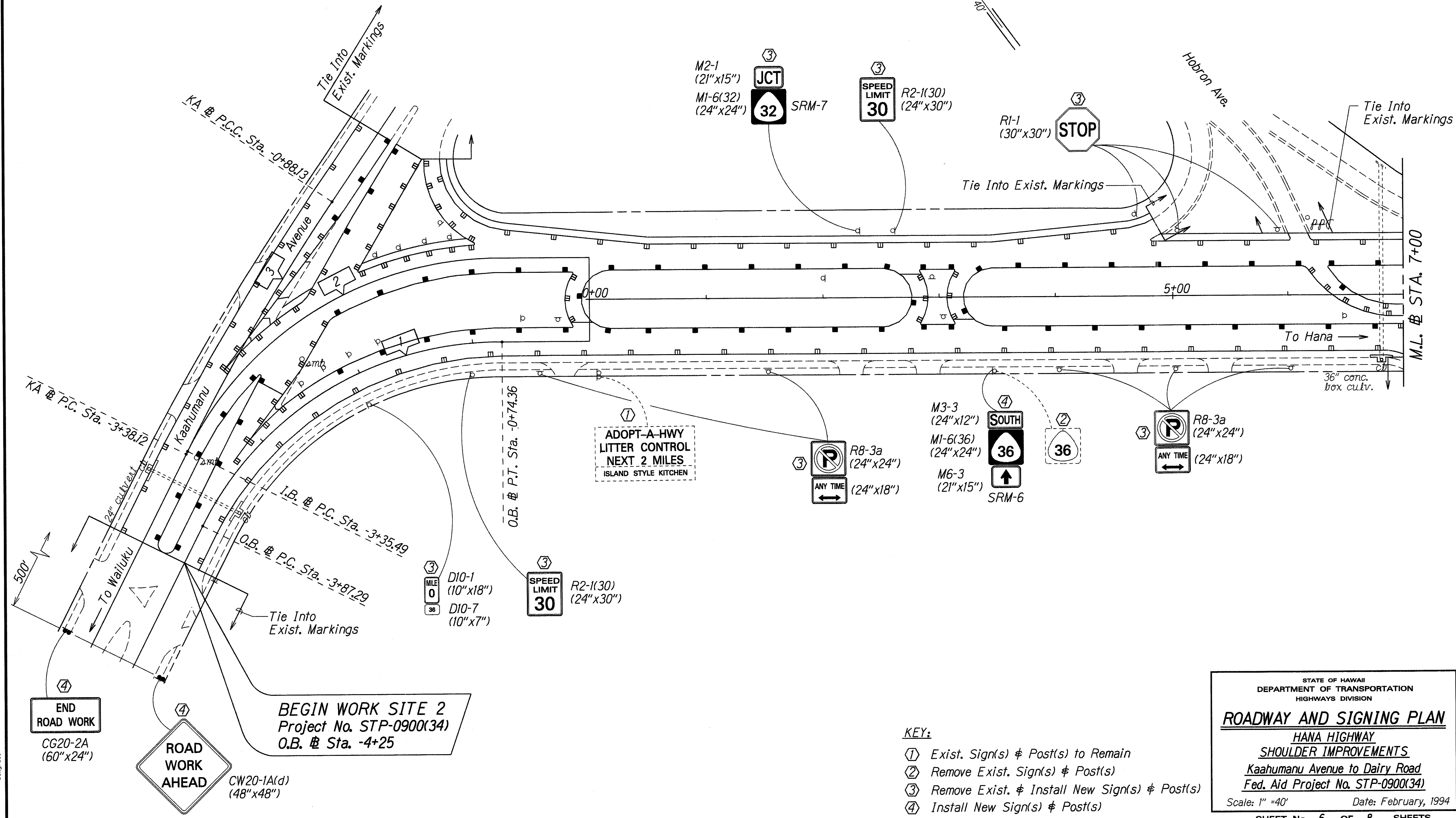
**ROADWAY AND SIGNING PLAN**  
 KAAHUMANU AVENUE  
 GUARDRAIL & SHOULDER IMPROVEMENTS  
 Nanioloa Drive to Kahului Beach Road  
 Fed. Aid Project No. STP-0900(34)

Scale: 1" = 40' Date: February, 1994  
 SHEET No. 5 OF 8 SHEETS

| FED. ROAD DIST. NO. | STATE | FED. AID PROJ. NO. | FISCAL YEAR | SHEET NO. | TOTAL SHEETS |
|---------------------|-------|--------------------|-------------|-----------|--------------|
| HAWAII              | HAW.  | STP-0900(34)       | 1997        | 14        | 20           |

⊕ CURVE DATA

|   | 1         | 2         | 3        |
|---|-----------|-----------|----------|
| Δ | 63°25'00" | 63°25'00" | 7°29'20" |
| R | 282.73'   | 296.81'   | 1912.57' |
| T | 174.67'   | 183.37'   | 125.17'  |
| L | 312.93'   | 328.52'   | 249.98'  |
| C | 297.20'   | 312.00'   | 249.81'  |



ORIGINAL PLAN SURVEY PLATTED BY DATE Feb. 1994  
 DRAWN BY  
 TRACED BY  
 DESIGNED BY  
 CHECKED BY

END ROAD WORK  
 CG20-2A  
 (60"x24")

ROAD WORK AHEAD  
 CW20-1A(d)  
 (48"x48")

BEGIN WORK SITE 2  
 Project No. STP-0900(34)  
 O.B. Sta. -4+25

ADOPT-A-HWY  
 LITTER CONTROL  
 NEXT 2 MILES  
 ISLAND STYLE KITCHEN

- KEY:
- ① Exist. Sign(s) & Post(s) to Remain
  - ② Remove Exist. Sign(s) & Post(s)
  - ③ Remove Exist. & Install New Sign(s) & Post(s)
  - ④ Install New Sign(s) & Post(s)

STATE OF HAWAII  
 DEPARTMENT OF TRANSPORTATION  
 HIGHWAYS DIVISION

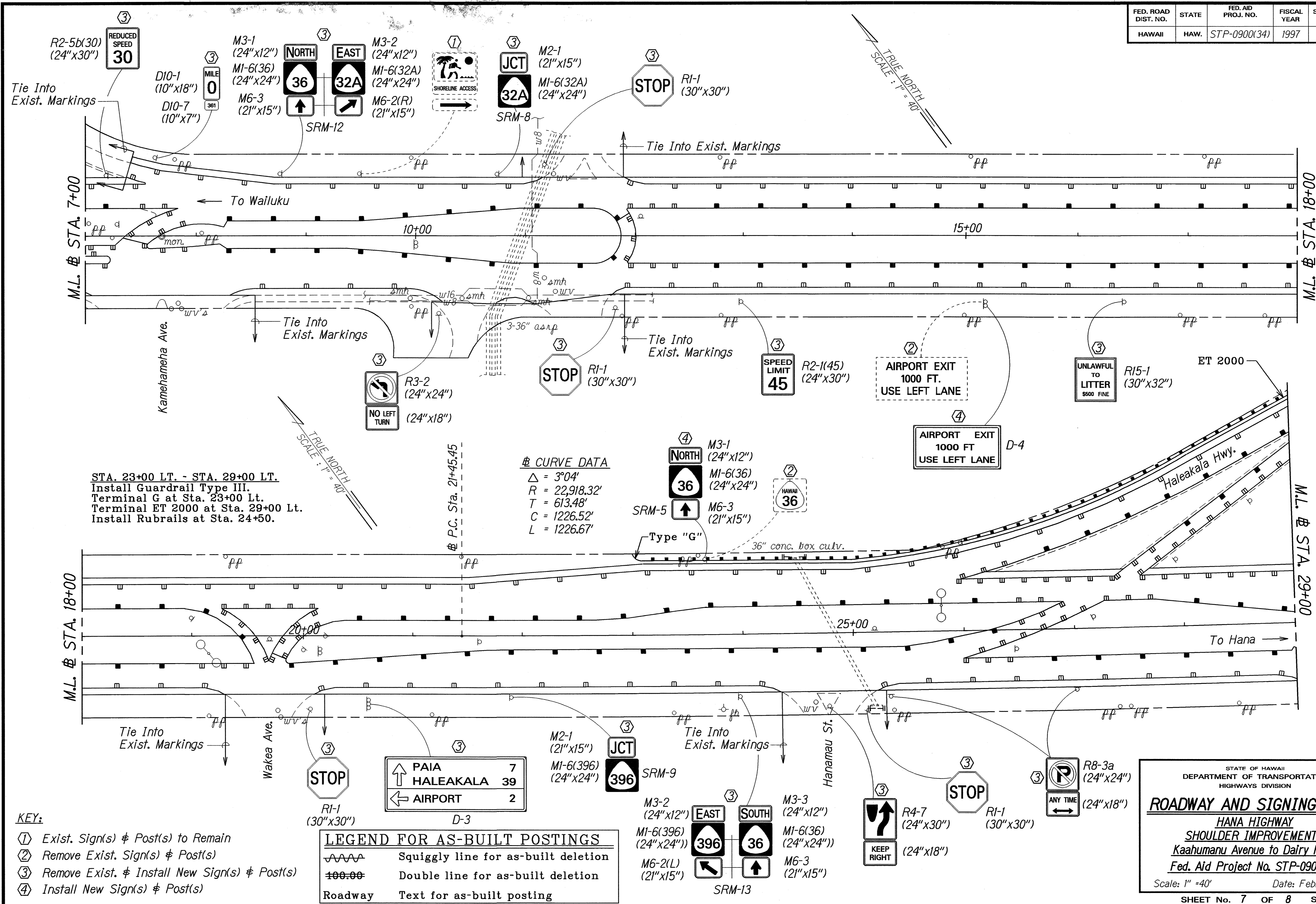
**ROADWAY AND SIGNING PLAN**

**HANA HIGHWAY**  
**SHOULDER IMPROVEMENTS**  
**Kaahumanu Avenue to Dairy Road**  
**Fed. Aid Project No. STP-0900(34)**

Scale: 1" = 40' Date: February, 1994

SHEET No. 6 OF 8 SHEETS

| FED. ROAD DIST. NO. | STATE | FED. AID PROJ. NO. | FISCAL YEAR | SHEET NO. | TOTAL SHEETS |
|---------------------|-------|--------------------|-------------|-----------|--------------|
| HAWAII              | HAW.  | STP-0900(34)       | 1997        | 15        | 20           |



STA. 23+00 LT. - STA. 29+00 LT.  
 Install Guardrail Type III.  
 Terminal G at Sta. 23+00 Lt.  
 Terminal ET 2000 at Sta. 29+00 Lt.  
 Install Rubrails at Sta. 24+50.

**CURVE DATA**

|          |              |
|----------|--------------|
| $\Delta$ | = 3°04'      |
| R        | = 22,918.32' |
| T        | = 613.48'    |
| C        | = 1226.52'   |
| L        | = 1226.67'   |

- KEY:**
- ① Exist. Sign(s) & Post(s) to Remain
  - ② Remove Exist. Sign(s) & Post(s)
  - ③ Remove Exist. & Install New Sign(s) & Post(s)
  - ④ Install New Sign(s) & Post(s)

**LEGEND FOR AS-BUILT POSTINGS**

|  |                                     |
|--|-------------------------------------|
|  | Squiggly line for as-built deletion |
|  | Double line for as-built deletion   |
|  | Roadway Text for as-built posting   |

|                   |      |
|-------------------|------|
| SURVEY PLOTTED BY | DATE |
| DRAWN BY          |      |
| DESIGNED BY       |      |
| PROPOSED BY       |      |
| QUANTITIES BY     |      |
| CHECKED BY        |      |

STATE OF HAWAII  
 DEPARTMENT OF TRANSPORTATION  
 HIGHWAYS DIVISION

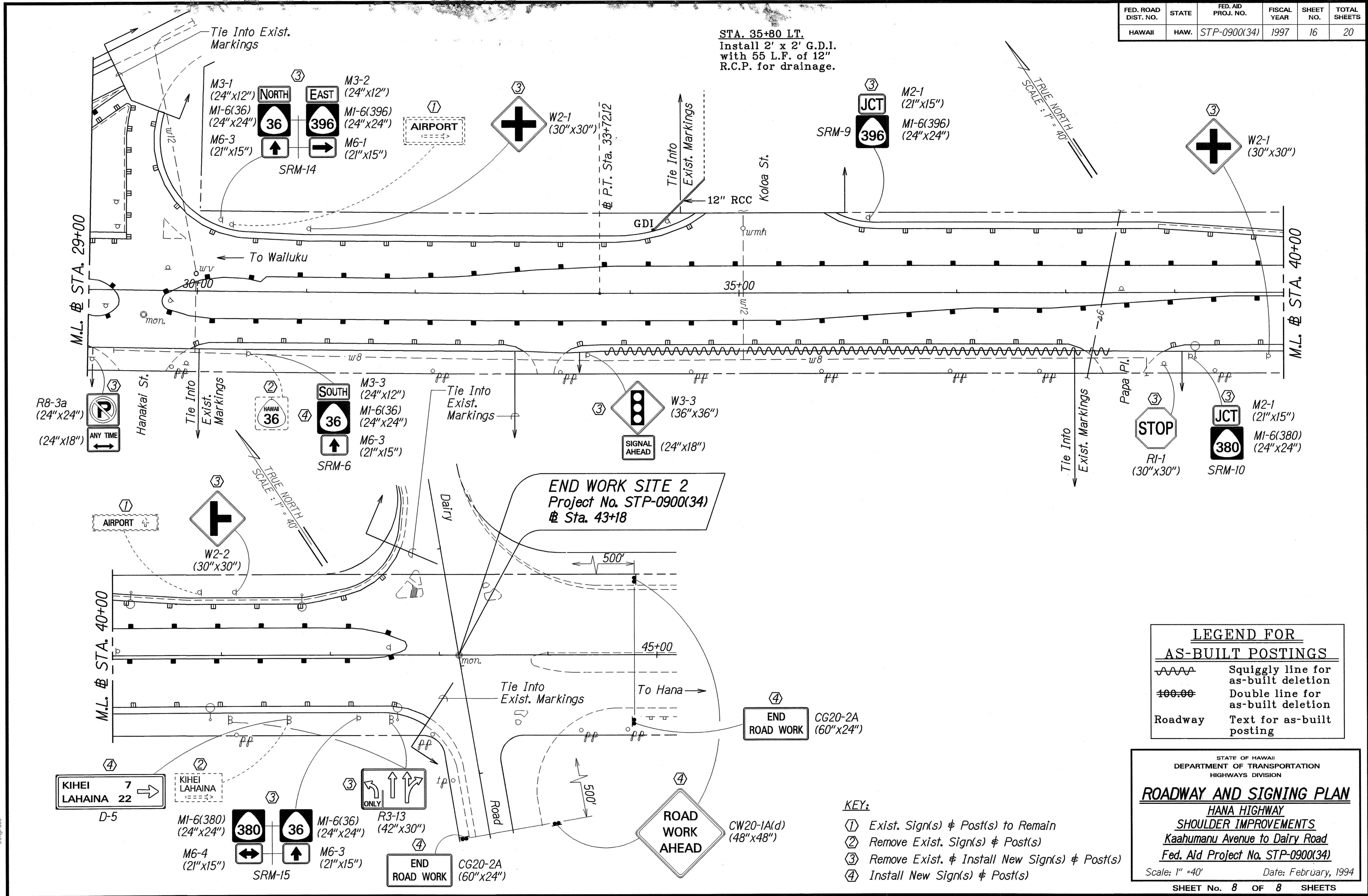
**ROADWAY AND SIGNING PLAN**  
**HANA HIGHWAY**  
**SHOULDER IMPROVEMENTS**  
 Kaahumanu Avenue to Dairy Road  
 Fed. Aid Project No. STP-0900(34)

Scale: 1" = 40'      Date: February, 1994

SHEET No. 7 OF 8 SHEETS

"AS-BUILT"

| FED. ROAD DIST. NO. | STATE | FED. AID PROJ. NO. | FISCAL YEAR | SHEET NO. | TOTAL SHEETS |
|---------------------|-------|--------------------|-------------|-----------|--------------|
| HAWAII              | HAW.  | STP-0900(34)       | 1997        | 16        | 20           |



|                   |      |
|-------------------|------|
| DATE              | 1994 |
| SURVEY PLOTTED BY | JG   |
| DRAWN BY          | CB   |
| NOTE BOOK         |      |
| QUANTITIES BY     |      |
| CHECKED BY        |      |

| LEGEND FOR AS-BUILT POSTINGS |                                     |
|------------------------------|-------------------------------------|
|                              | Squiggly line for as-built deletion |
|                              | Double line for as-built deletion   |
| Roadway                      | Text for as-built posting           |

STATE OF HAWAII  
DEPARTMENT OF TRANSPORTATION  
HIGHWAYS DIVISION

**ROADWAY AND SIGNING PLAN**  
HANA HIGHWAY  
SHOULDER IMPROVEMENTS  
Kaahumanu Avenue to Dairy Road  
Fed. Aid Project No. STP-0900(34)

Scale: 1" = 40' Date: February, 1994

SHEET No. 8 OF 8 SHEETS

"AS-BUILT"