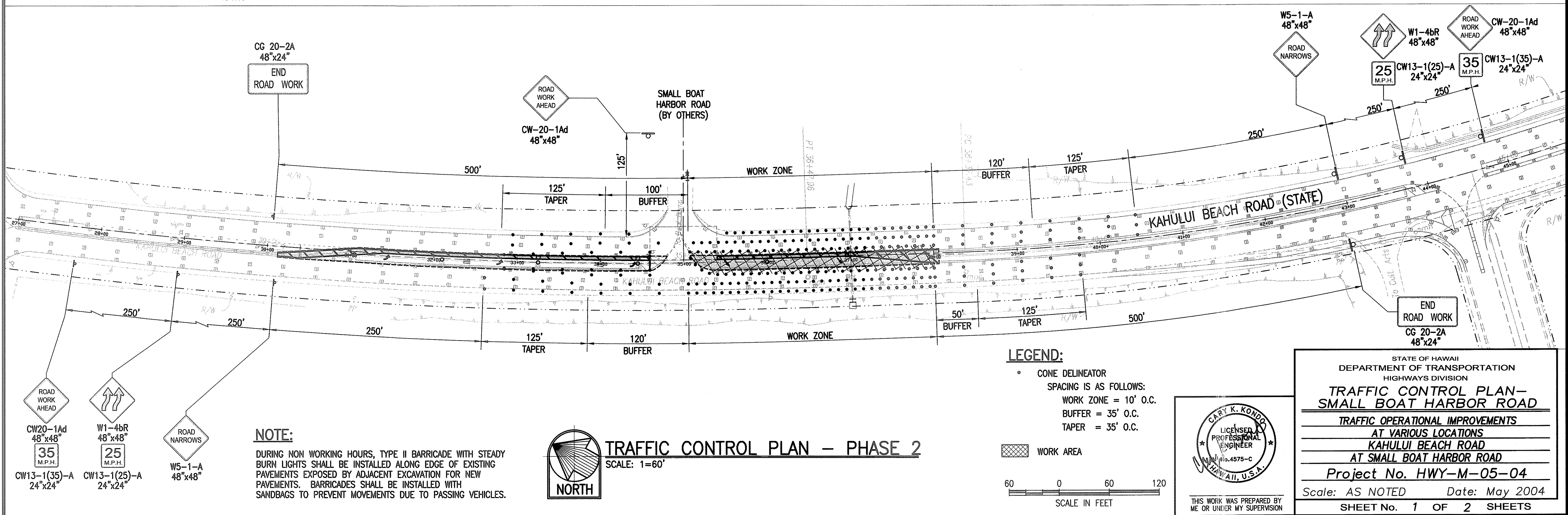
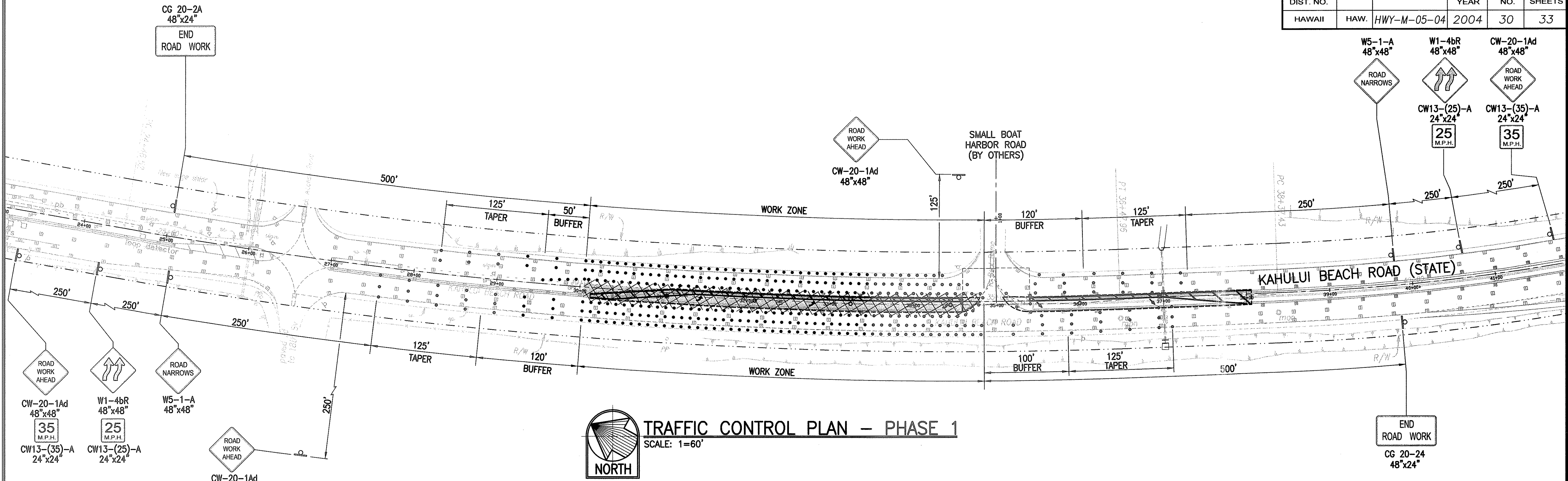


FED. ROAD DIST. NO.	STATE	PROJ. NO.	FISCAL YEAR	SHEET NO.	TOTAL SHEETS
HAWAII	HAW.	HWY-M-05-04	2004	30	33

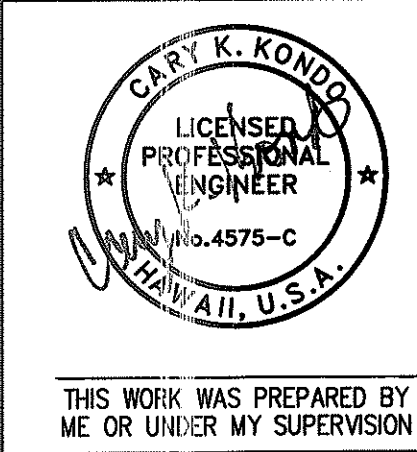


NOTE:
DURING NON WORKING HOURS, TYPE II BARRICADE WITH STEADY BURN LIGHTS SHALL BE INSTALLED ALONG EDGE OF EXISTING PAVEMENTS EXPOSED BY ADJACENT EXCAVATION FOR NEW PAVEMENTS. BARRICADES SHALL BE INSTALLED WITH SANDBAGS TO PREVENT MOVEMENTS DUE TO PASSING VEHICLES.

LEGEND:

- CONE DELINEATOR
- SPACING IS AS FOLLOWS:
WORK ZONE = 10' O.C.
BUFFER = 35' O.C.
TAPER = 35' O.C.
- [Cross-hatch pattern] WORK AREA

60 0 60 120
SCALE IN FEET



STATE OF HAWAII
DEPARTMENT OF TRANSPORTATION
HIGHWAYS DIVISION

TRAFFIC CONTROL PLAN - SMALL BOAT HARBOR ROAD

TRAFFIC OPERATIONAL IMPROVEMENTS
AT VARIOUS LOCATIONS
KAHULUI BEACH ROAD
AT SMALL BOAT HARBOR ROAD

Project No. HWY-M-05-04
Scale: AS NOTED Date: May 2004
SHEET No. 1 OF 2 SHEETS

DATE	2004
SURVEY PLOTTED BY	
DESIGNED BY	
NOTE BOOK	
QUANTITIES BY	
CHECKED BY	
No.	

Tue, 20 Apr 2004 - 9:00am
M:\DOT\1999\00700 Maui Intersections\CAD\Kahului\2-032.dwg
EPS: 1=60'
PLAN ROW=29906