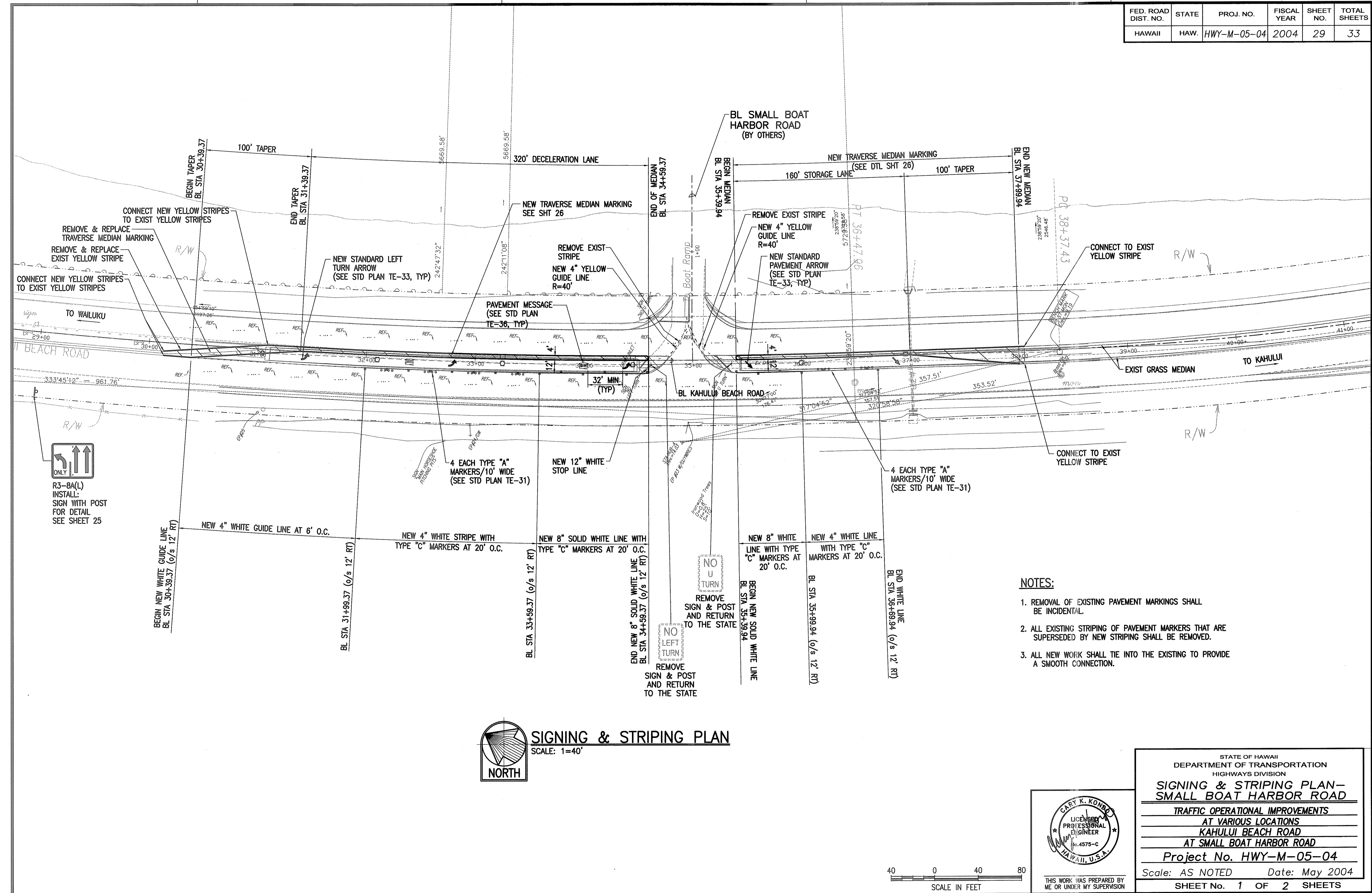


FED. ROAD DIST. NO.	STATE	PROJ. NO.	FISCAL YEAR	SHEET NO.	TOTAL SHEETS
HAWAII	HAW.	HWY-M-05-04	2004	29	33



CONNECT NEW YELLOW STRIPES TO EXIST YELLOW STRIPES

REMOVE & REPLACE TRAVERSE MEDIAN MARKING

REMOVE & REPLACE EXIST YELLOW STRIPE

CONNECT NEW YELLOW STRIPES TO EXIST YELLOW STRIPES

TO WAILUKU

333'45"12" = 961.76'

R/W

R3-8A(L) ONLY

INSTALL: SIGN WITH POST FOR DETAIL SEE SHEET 25

BEGIN TAPER BL STA 30+39.37

100' TAPER

END TAPER BL STA 31+39.37

NEW STANDARD LEFT TURN ARROW (SEE STD PLAN TE-33, TYP)

NEW TRAVERSE MEDIAN MARKING (SEE DTL SHT 26)

NEW 4" YELLOW GUIDE LINE R=40'

PAVEMENT MESSAGE (SEE STD PLAN TE-36, TYP)

32" MIN. (TYP)

4 EACH TYPE "A" MARKERS/10' WIDE (SEE STD PLAN TE-31)

NEW 12" WHITE STOP LINE

320' DECELERATION LANE

5669.58'

242'11.08"

REMOVE EXIST STRIPE

NEW 4" YELLOW GUIDE LINE R=40'

NEW 8" SOLID WHITE LINE WITH TYPE "C" MARKERS AT 20' O.C.

END NEW 8" SOLID WHITE LINE BL STA 34+59.37 (o/s 12' RT)

REMOVE SIGN & POST AND RETURN TO THE STATE

NO LEFT TURN

BL SMALL BOAT HARBOR ROAD (BY OTHERS)

BEGIN MEDIAN BL STA 35+39.94

END OF MEDIAN BL STA 34+59.37

REMOVE EXIST STRIPE

NEW 4" YELLOW GUIDE LINE R=40'

NEW STANDARD PAVEMENT ARROW (SEE STD PLAN TE-33, TYP)

BL KAHULUI BEACH ROAD

NEW 8" WHITE LINE WITH TYPE "C" MARKERS AT 20' O.C.

BEGIN NEW SOLID WHITE LINE BL STA 35+39.94

REMOVE SIGN & POST AND RETURN TO THE STATE

NO TURN

NEW TRAVERSE MEDIAN MARKING (SEE DTL SHT 26)

160' STORAGE LANE

100' TAPER

CONNECT TO EXIST YELLOW STRIPE

R/W

EXIST GRASS MEDIAN

TO KAHULUI

CONNECT TO EXIST YELLOW STRIPE

R/W

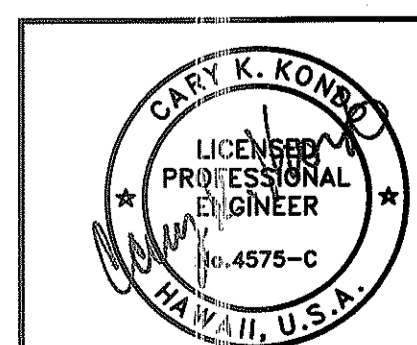
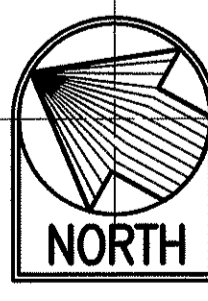
4 EACH TYPE "A" MARKERS/10' WIDE (SEE STD PLAN TE-31)

NEW 4" WHITE LINE WITH TYPE "C" MARKERS AT 20' O.C.

END WHITE LINE BL STA 36+69.94 (o/s 12' RT)

- NOTES:**
1. REMOVAL OF EXISTING PAVEMENT MARKINGS SHALL BE INCIDENTAL.
 2. ALL EXISTING STRIPING OF PAVEMENT MARKERS THAT ARE SUPERSEDED BY NEW STRIPING SHALL BE REMOVED.
 3. ALL NEW WORK SHALL TIE INTO THE EXISTING TO PROVIDE A SMOOTH CONNECTION.

SIGNING & STRIPING PLAN
SCALE: 1=40'



THIS WORK WAS PREPARED BY ME OR UNDER MY SUPERVISION



STATE OF HAWAII
DEPARTMENT OF TRANSPORTATION
HIGHWAYS DIVISION

SIGNING & STRIPING PLAN - SMALL BOAT HARBOR ROAD

TRAFFIC OPERATIONAL IMPROVEMENTS
AT VARIOUS LOCATIONS
KAHULUI BEACH ROAD
AT SMALL BOAT HARBOR ROAD

Project No. HWY-M-05-04
Scale: AS NOTED Date: May 2004
SHEET No. 1 OF 2 SHEETS

SURVEY PLOTTED BY	DATE
DRAWN BY	
DESIGNED BY	
QUANTITIES BY	
CHECKED BY	
ORIGINAL PLAN	
NOTE BOOK	
No.	

Tue, 20 Apr 2004 - 8:56am
M:\DOT\1589700\00 Maui Intersections\CA0\Kahului\2-030.dwg
EPS: 1=40'
PLAN KAH-29906