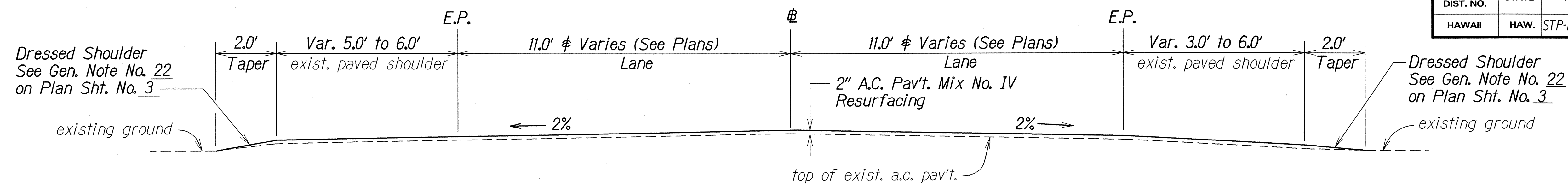
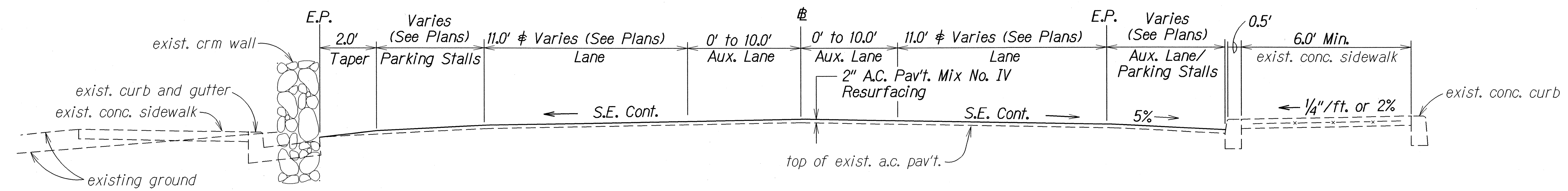


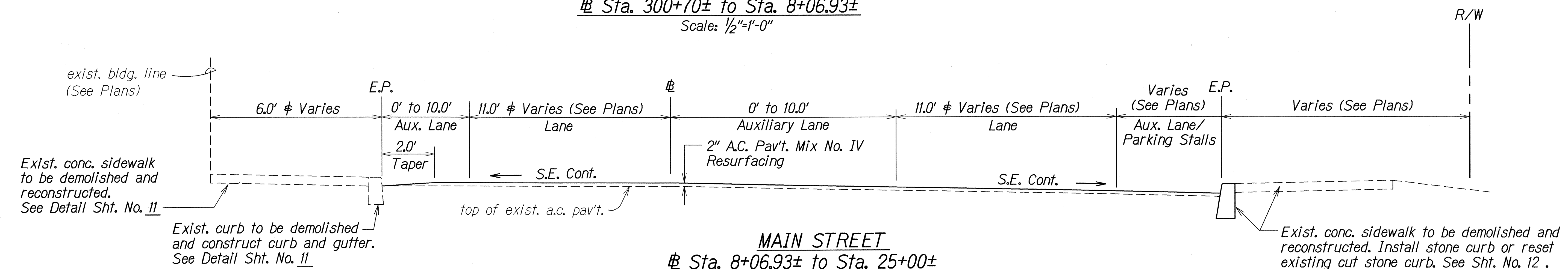
FED. ROAD DIST. NO.	STATE	FED. AID PROJ. NO.	FISCAL YEAR	SHEET NO.	TOTAL SHEETS
HAWAII	HAW.	STP-NH-0900(62)R	2003	10	34



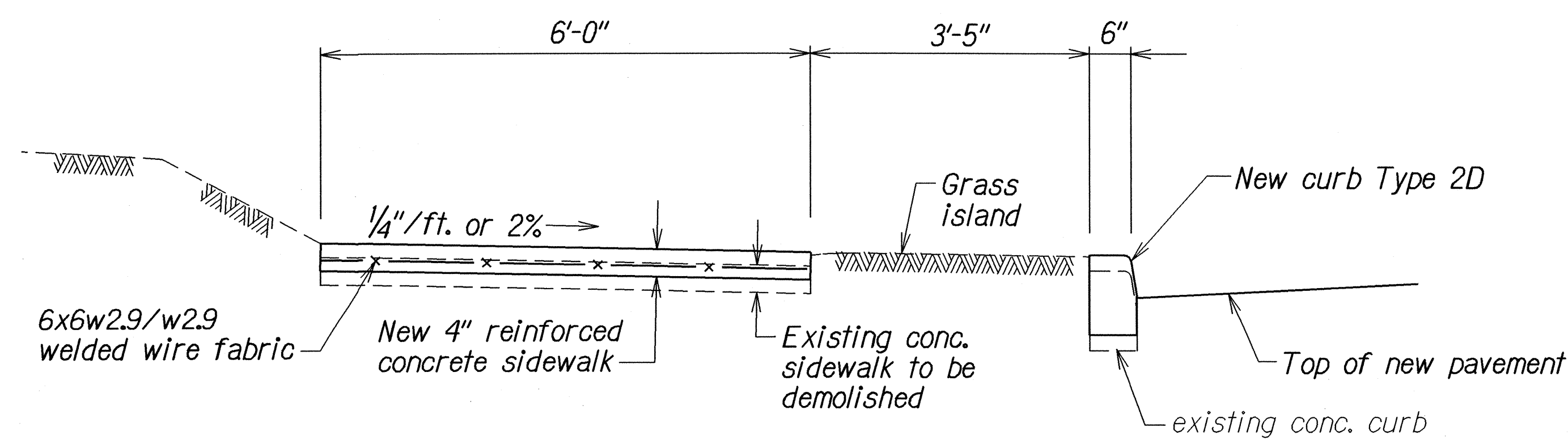
**HIGH STREET**  
 Sta. 287+50± to Sta. 300+70±  
 Scale: 1/2"=1'-0"



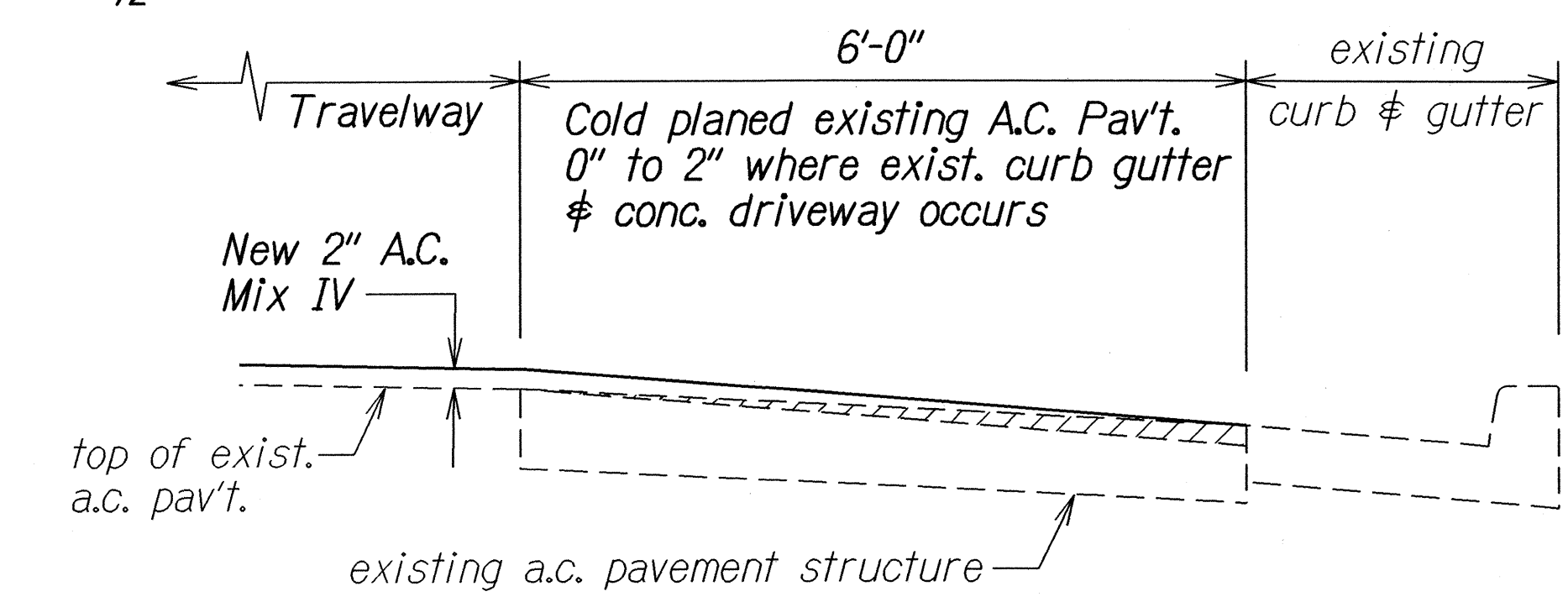
**HIGH STREET**  
 Sta. 300+70± to Sta. 8+06.93±  
 Scale: 1/2"=1'-0"



**MAIN STREET**  
 Sta. 8+06.93± to Sta. 25+00±  
 Scale: 1/2"=1'-0"



**TYPICAL DETAIL OF  
 REINFORCED CONCRETE SIDEWALK AND CURB TYPE 2D**  
 (STA. 301+10± LT. - STA. 307+20± LT.)  
 Scale: 3/4"=1'-0"



**TYPICAL DETAIL - COLD PLANING  
 OF EXISTING A.C. PAVEMENT @ CURB & GUTTER**  
 (STA. 287+50 LT. - STA. 290+90 LT.)  
 (STA. 287+50 RT. - STA. 291+90 RT.)  
 Scale: 3/4"=1'-0"

STATE OF HAWAII

DEPARTMENT OF TRANSPORTATION

HIGHWAYS DIVISION

TYPICAL SECTIONS & DETAILS

HIGH STREET RESURFACING

Main Street to Keanu Street and

MAIN STREET RESURFACING

High Street to Central Avenue

Federal Aid Project No. STP-NH-0900(62)R

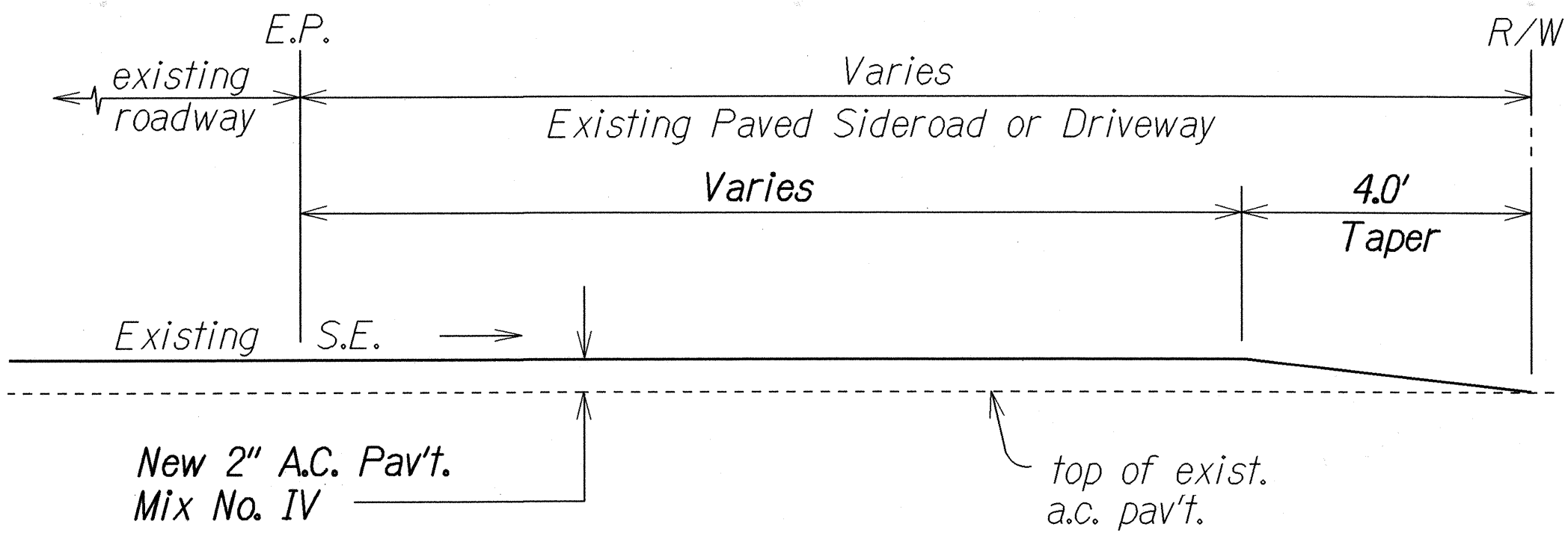
Scale: As Shown

Date: October, 2002

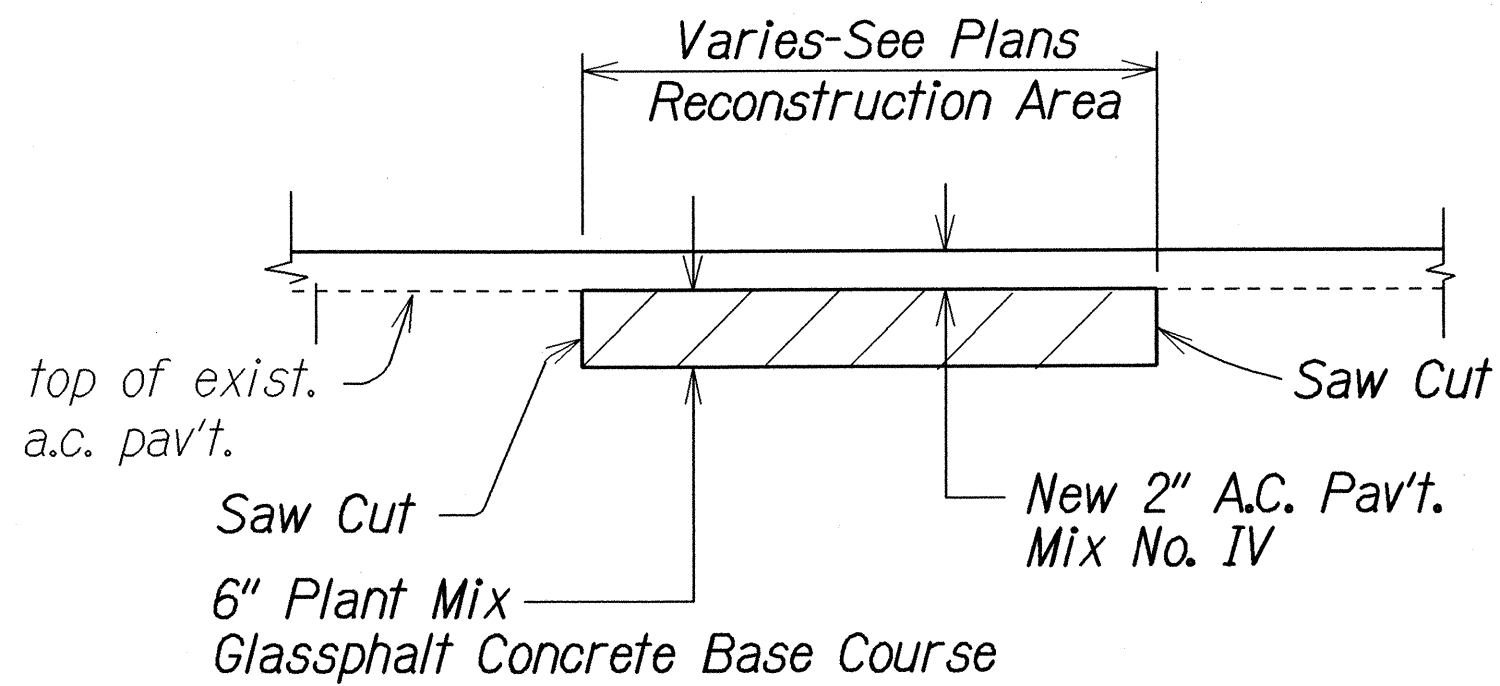
SHEET No. 1 OF 4 SHEETS

10

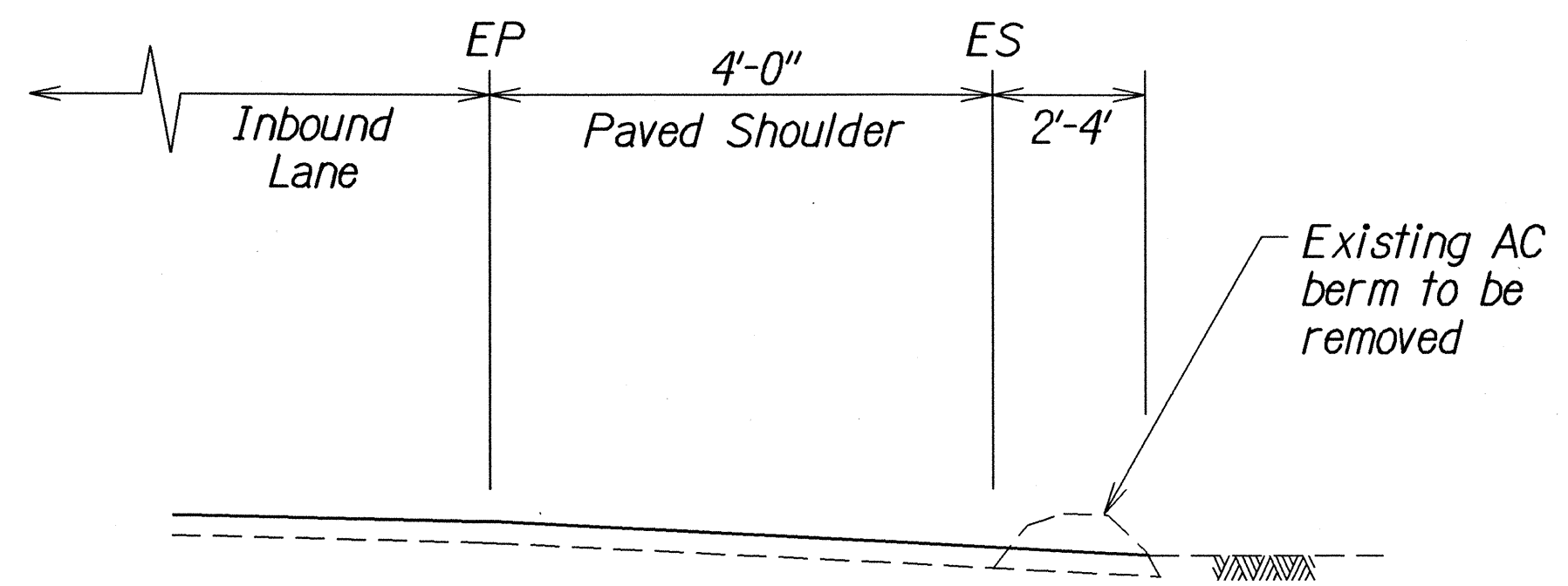
FED. ROAD DIST. NO.	STATE	FED. AID PROJ. NO.	FISCAL YEAR	SHEET NO.	TOTAL SHEETS
HAWAII	HAW.	STP-NH-0900(62)R	2003	11	34



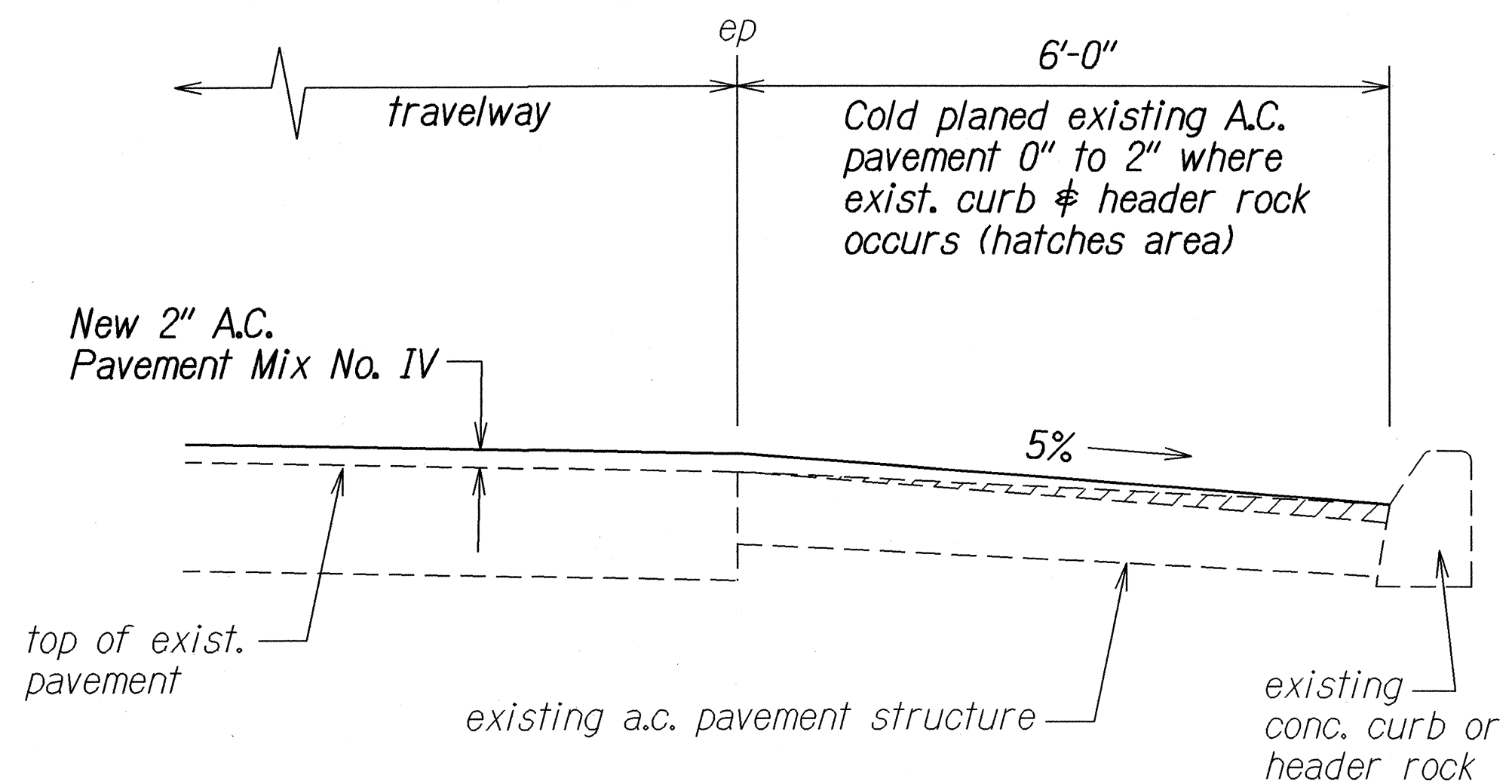
**A.C. RESURFACING AT PAVED SIDEROAD  
OR PAVED DRIVEWAY DETAIL**  
Not to Scale



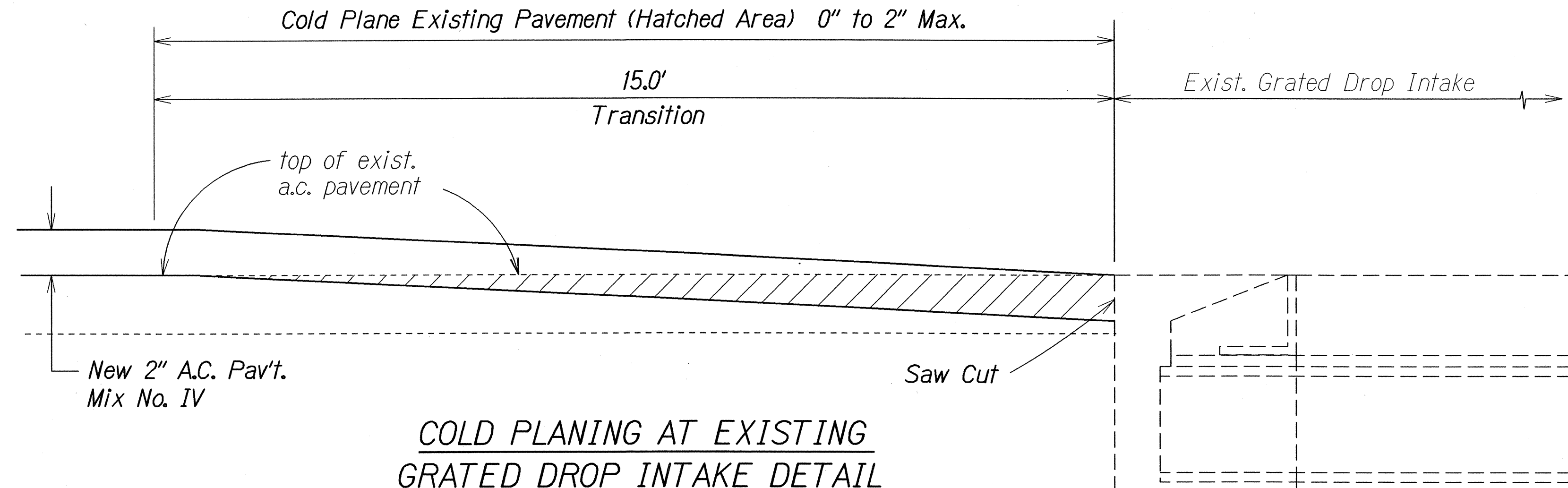
**A.C. PAVEMENT RECONSTRUCTION DETAIL**  
Not to Scale



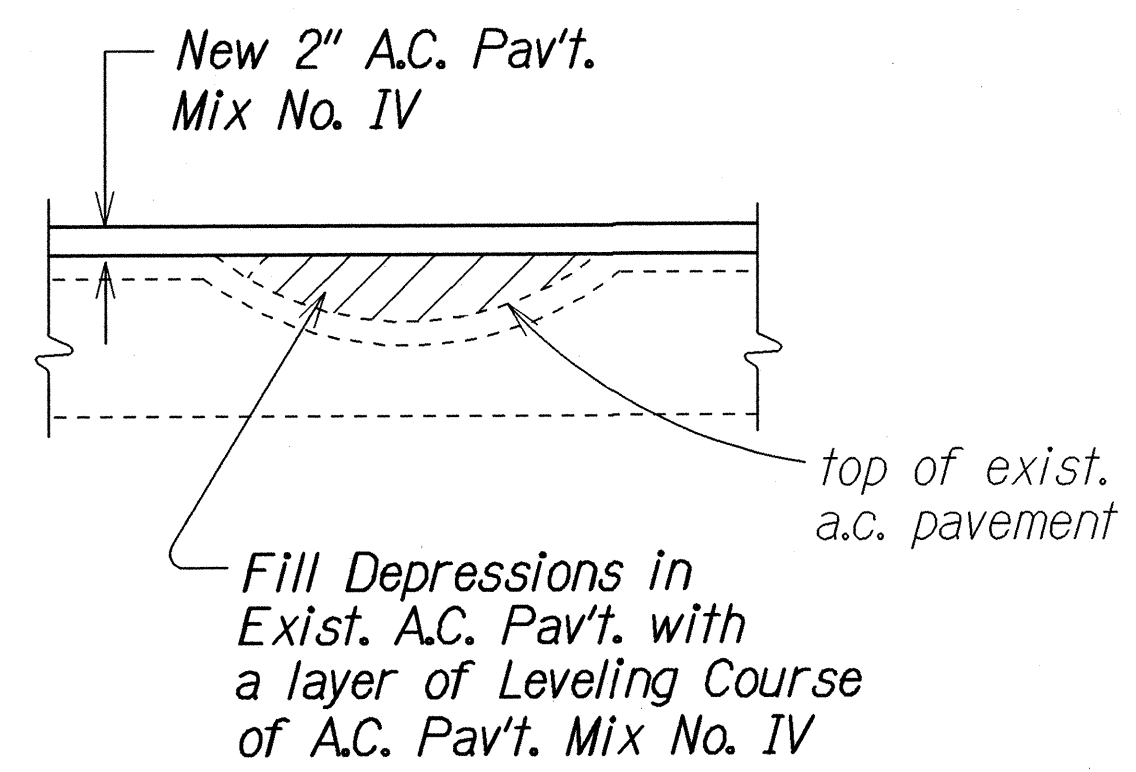
**HALF TYPICAL SECTION  
HIGH STREET**  
Scale:  $\frac{3}{4}$ " = 1'-0"



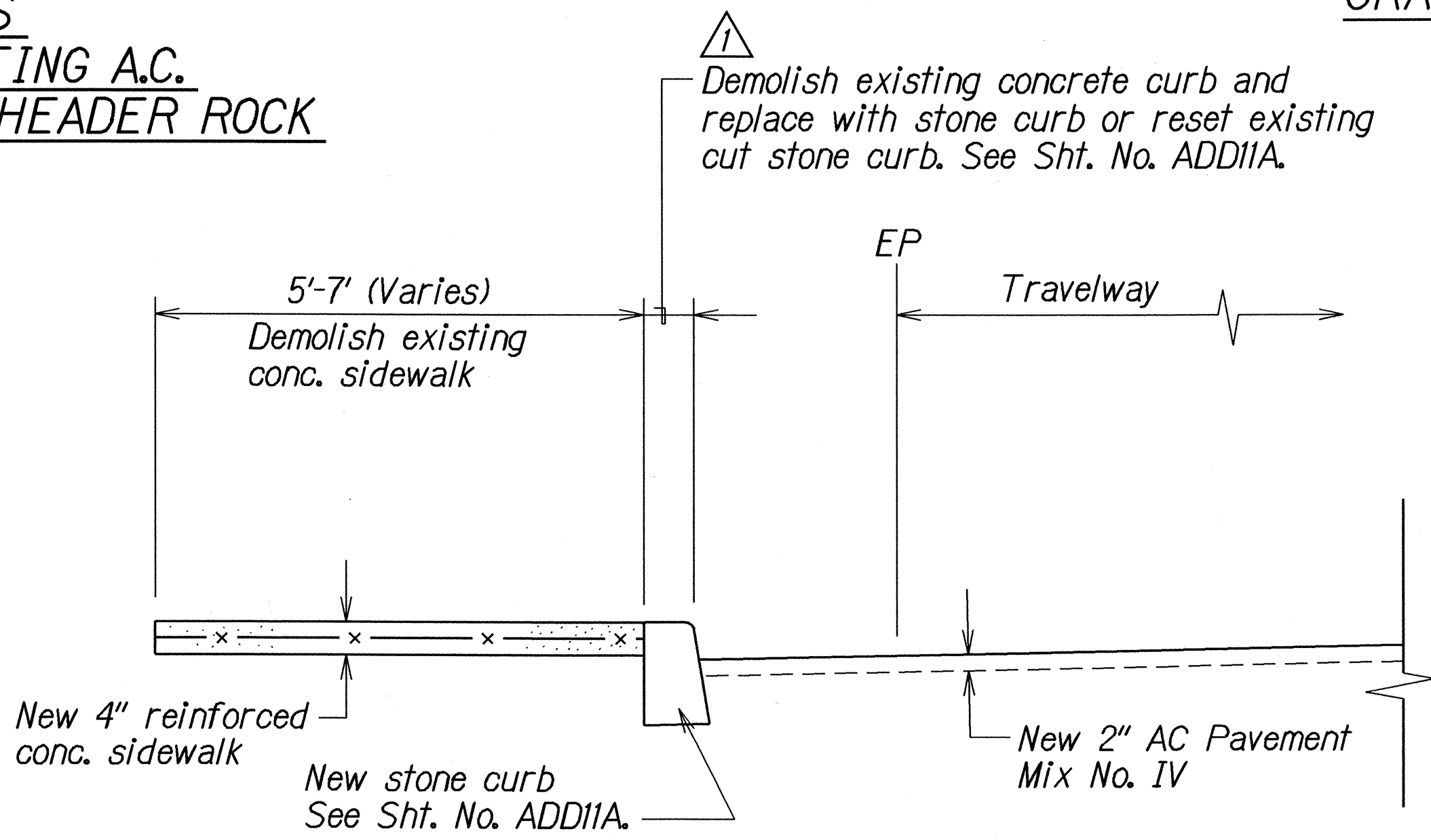
**TYPICAL DETAILS  
COLD PLANING OF EXISTING A.C.  
PAVEMENT @ CONC. CURB OR HEADER ROCK**  
Scale:  $\frac{3}{4}$ " = 1'-0"



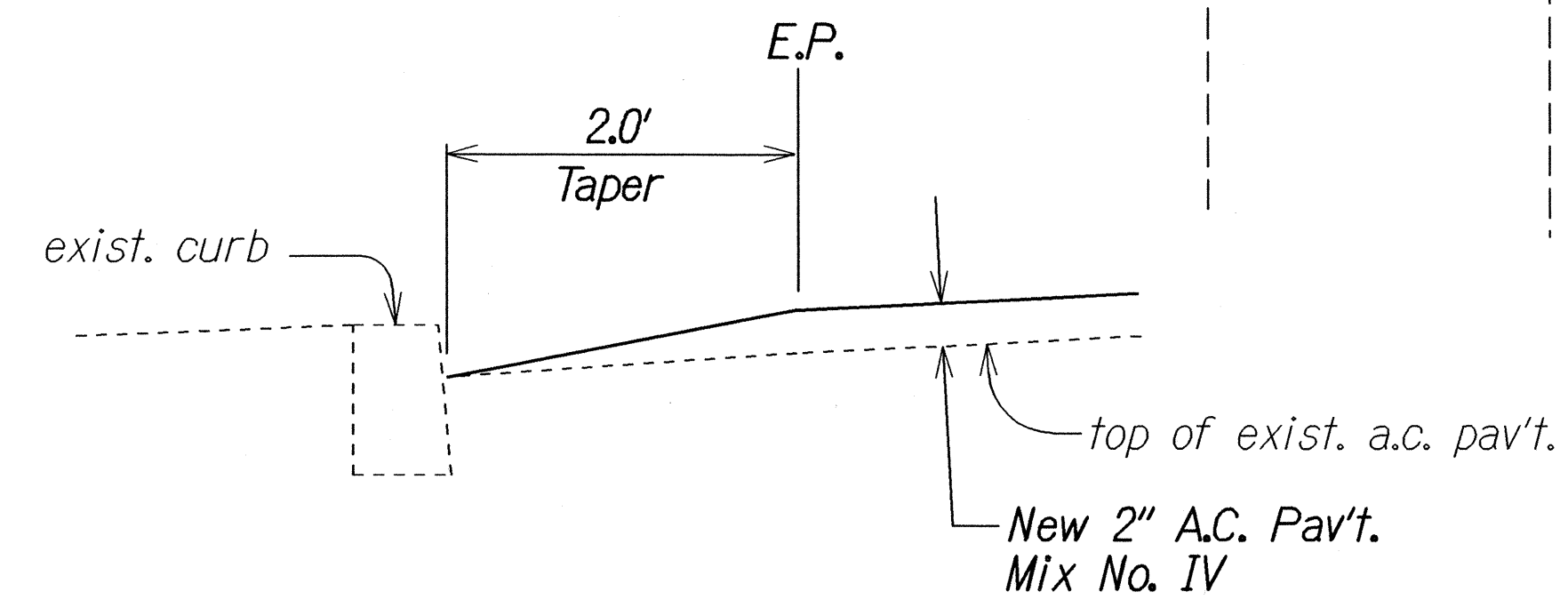
**COLD PLANING AT EXISTING  
GRATED DROP INTAKE DETAIL**  
Not to Scale



**LEVELING COURSE DETAIL**  
Not to Scale



**TYPICAL HALF SECTION  
CURB AND GUTTER TYPE 2DG  
4-INCH CONC. SIDEWALK @  
MAIN STREET STA. 9+30± LT. & RT. TO STA. 23+30± LT. & RT.**  
Scale:  $\frac{3}{4}$ " = 1'-0"



**TYPICAL SECTION  
A.C. PAV'T. RESURFACING  
AT CURB DETAIL**  
Not to Scale

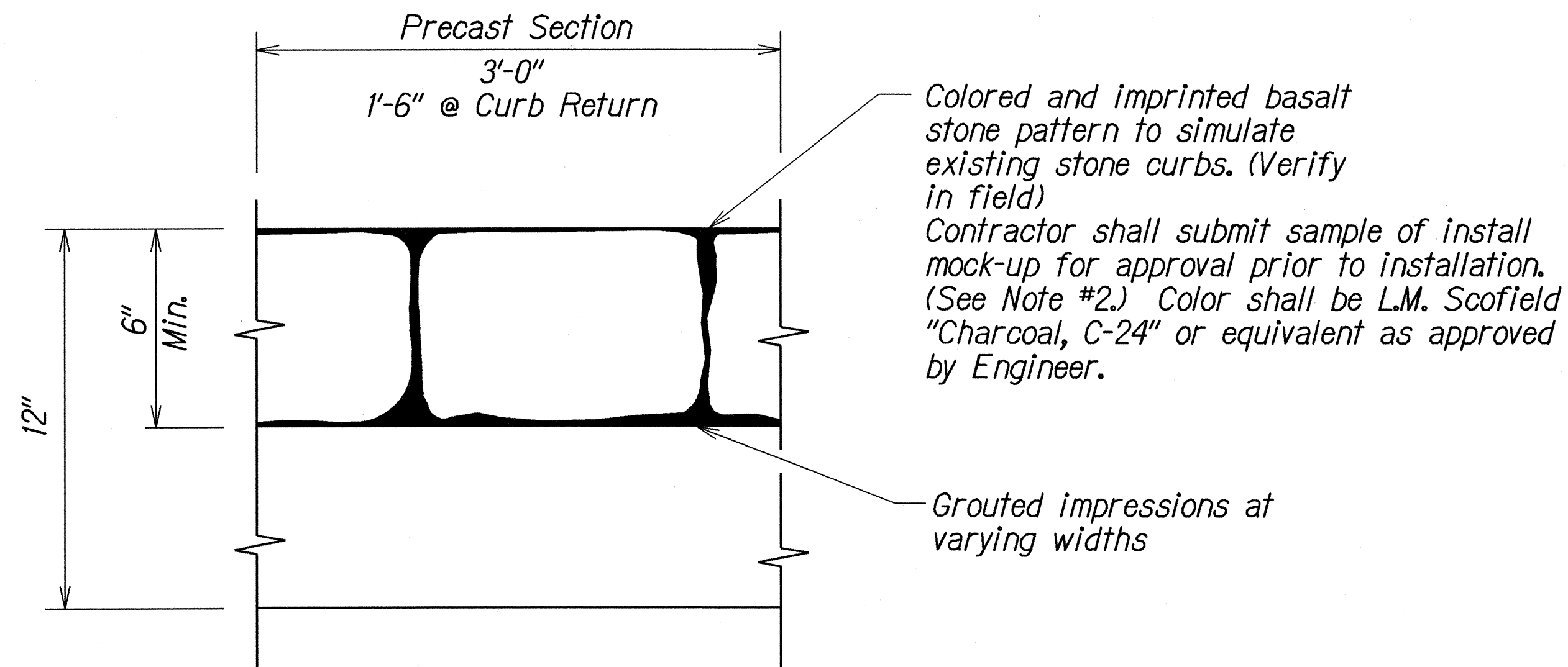
SURVEY PLOTTED BY	DATE
DRAWN BY	
TRACED BY	
QUANTITIES BY	
CHECKED BY	
ORIGINAL PLAN	
NOTE BOOK	
NO.	

STATE OF HAWAII  
DEPARTMENT OF TRANSPORTATION  
HIGHWAYS DIVISION

**TYPICAL SECTIONS & DETAILS**

HIGH STREET RESURFACING  
Main Street to Keanu Street and  
MAIN STREET RESURFACING  
High Street to Central Avenue  
Federal Aid Project No. STP-NH-0900(62)R  
Scale: As Shown Date: October, 2002

FED. ROAD DIST. NO.	STATE	FED. AID PROJ. NO.	FISCAL YEAR	SHEET NO.	TOTAL SHEETS
HAWAII	HAW.	STP-NH-0900(62)R	2003	12	33



FRONT ELEVATION - CURB  
Not To Scale

- NOTES:
- Contractor shall verify existing sidewalk surface finishes in the field and shall provide shop drawings or, if required by Engineer, submit samples or mock-ups of colors, imprints and textures for approval prior to the reconstruction of the specified stamped sidewalks.
  - Concrete curbs and stamped sidewalks that are colored, imprinted with patterns and textured shall be "isomanite" or approved equal installation of these concrete curbs and stamped sidewalks shall be by a "isomanite" licensed contractor trained and equipped by isomanite corporation.

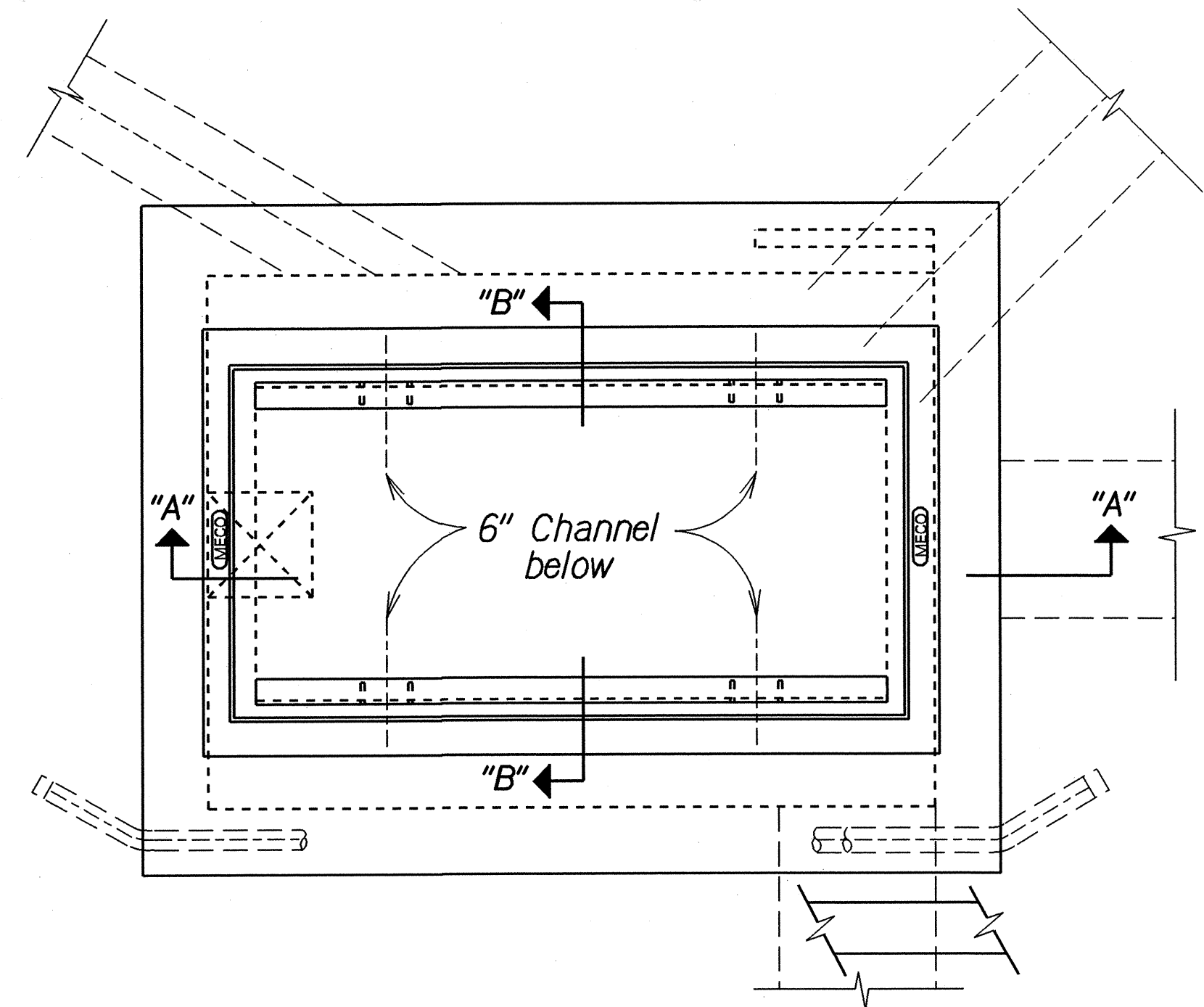
ORIGINAL PLAN	SURVEY PLOTTED BY	DATE
NOTE BOOK	DRAWN BY	12/01
	DESIGNED BY	
	CHECKED BY	
	CHECKED BY	

STATE OF HAWAII  
DEPARTMENT OF TRANSPORTATION  
HIGHWAYS DIVISION

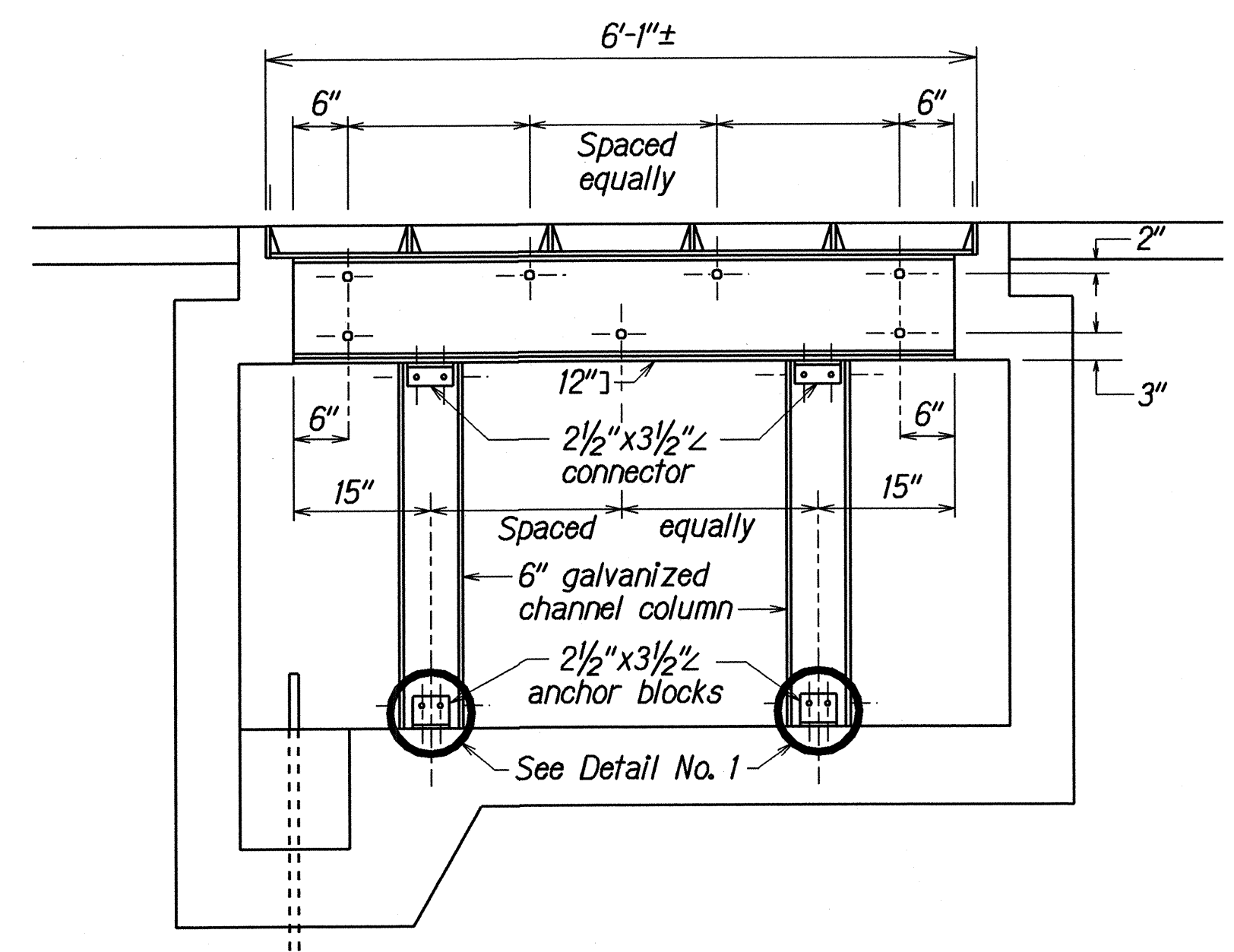
**TYPICAL SECTIONS & DETAILS**  
HIGH STREET RESURFACING  
Main Street to Keanu Street and  
MAIN STREET RESURFACING  
High Street to Central Avenue  
Federal Aid Project No. STP-NH-0900(62)R  
Scale: As Shown      Date: October, 2002



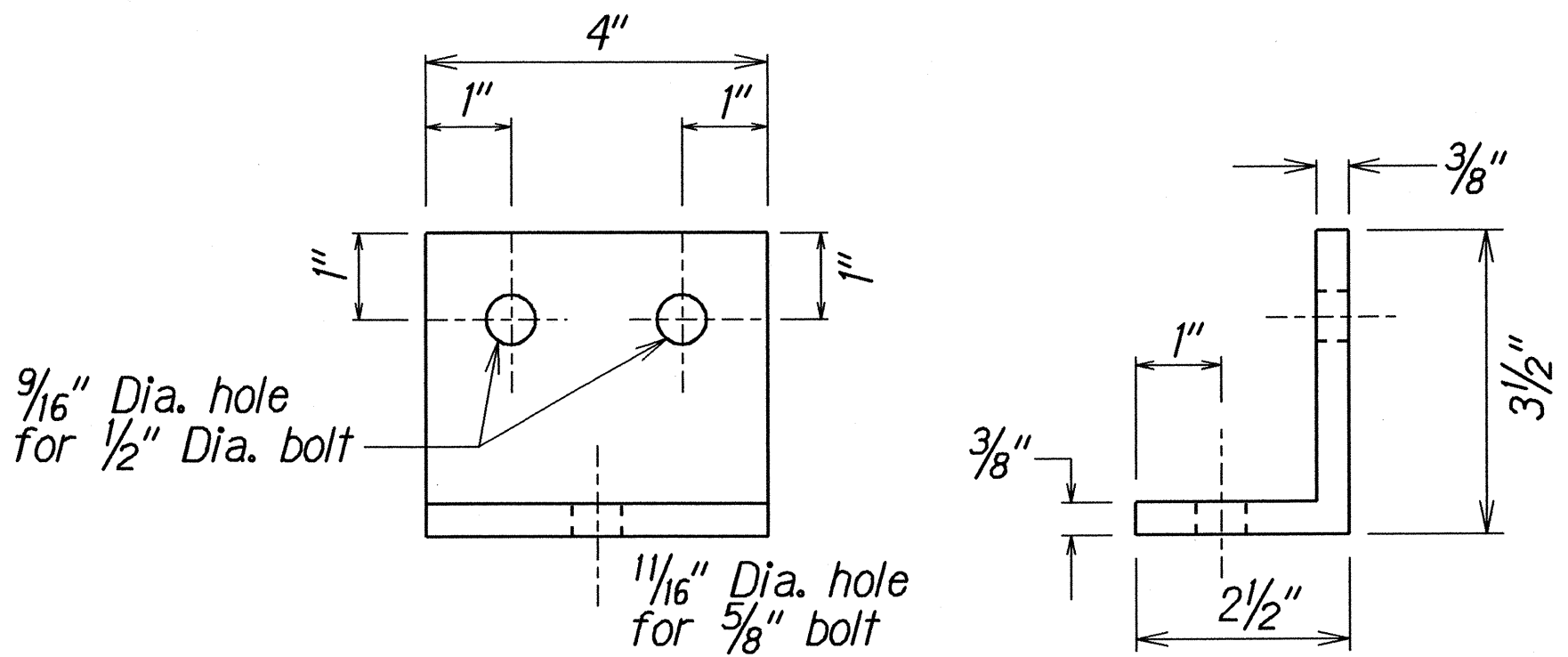
FED. ROAD DIST. NO.	STATE	FED. AID PROJ. NO.	FISCAL YEAR	SHEET NO.	TOTAL SHEETS
HAWAII	HAW.	STP-NH-0900(62)R	2003	13	34



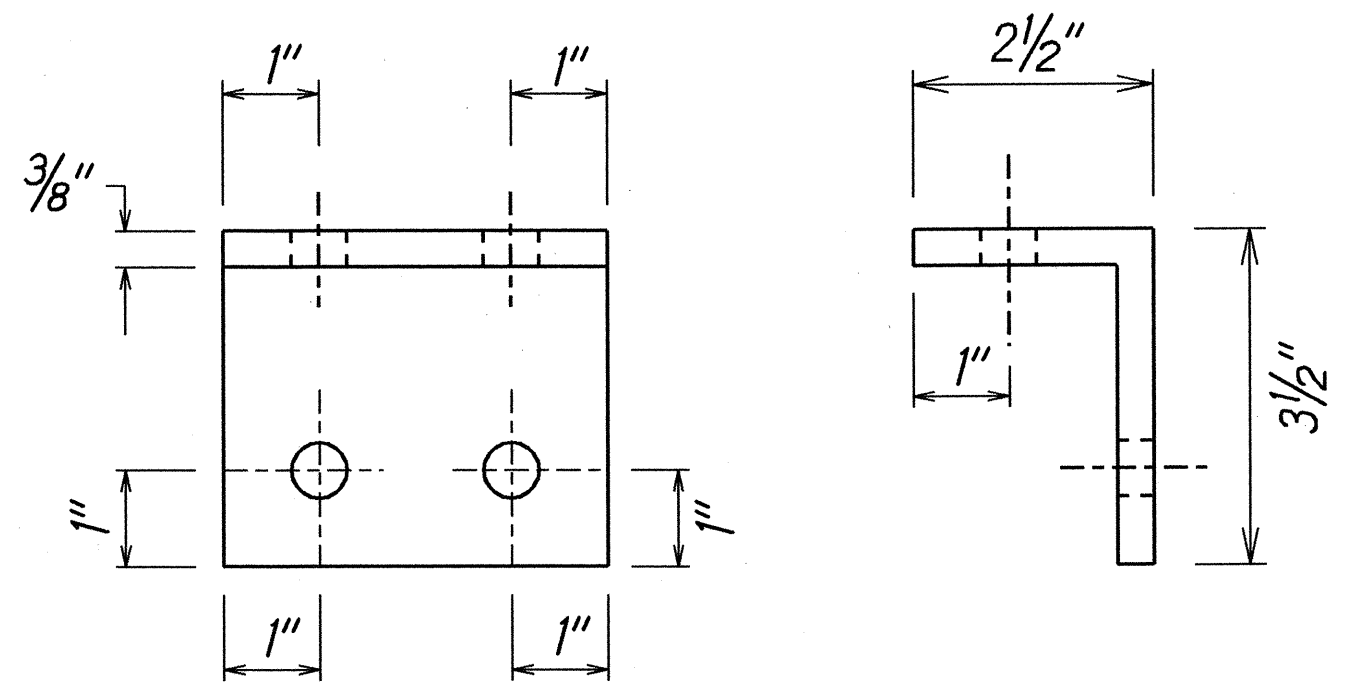
TOP PLAN  
Scale: 3/4" = 1'-0"



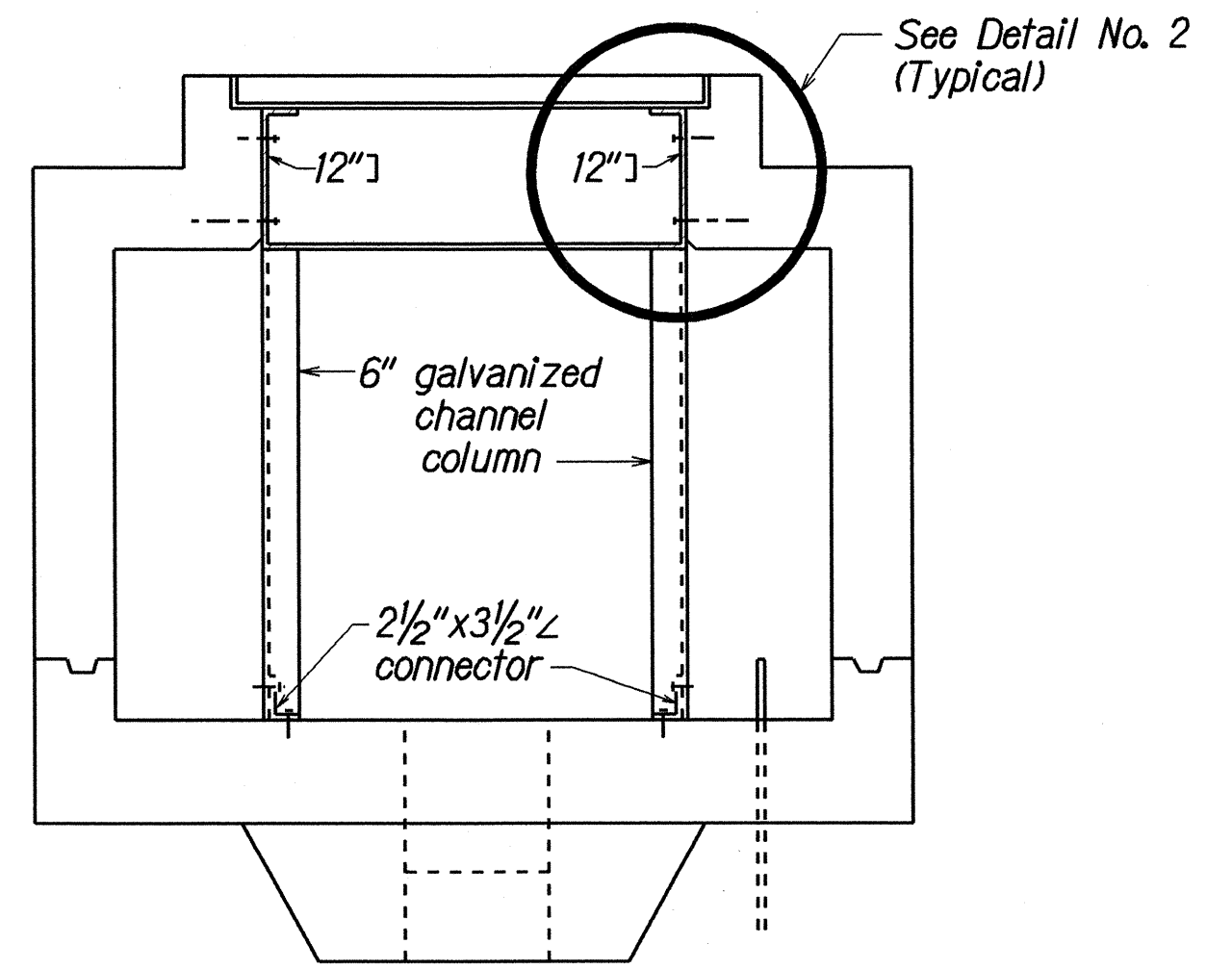
SECTION "A-A"  
Scale: 3/4" = 1'-0"



FRONT VIEW SIDE VIEW  
ANGLE IRON ANCHOR BLOCK  
Scale: 1/2" = 1"



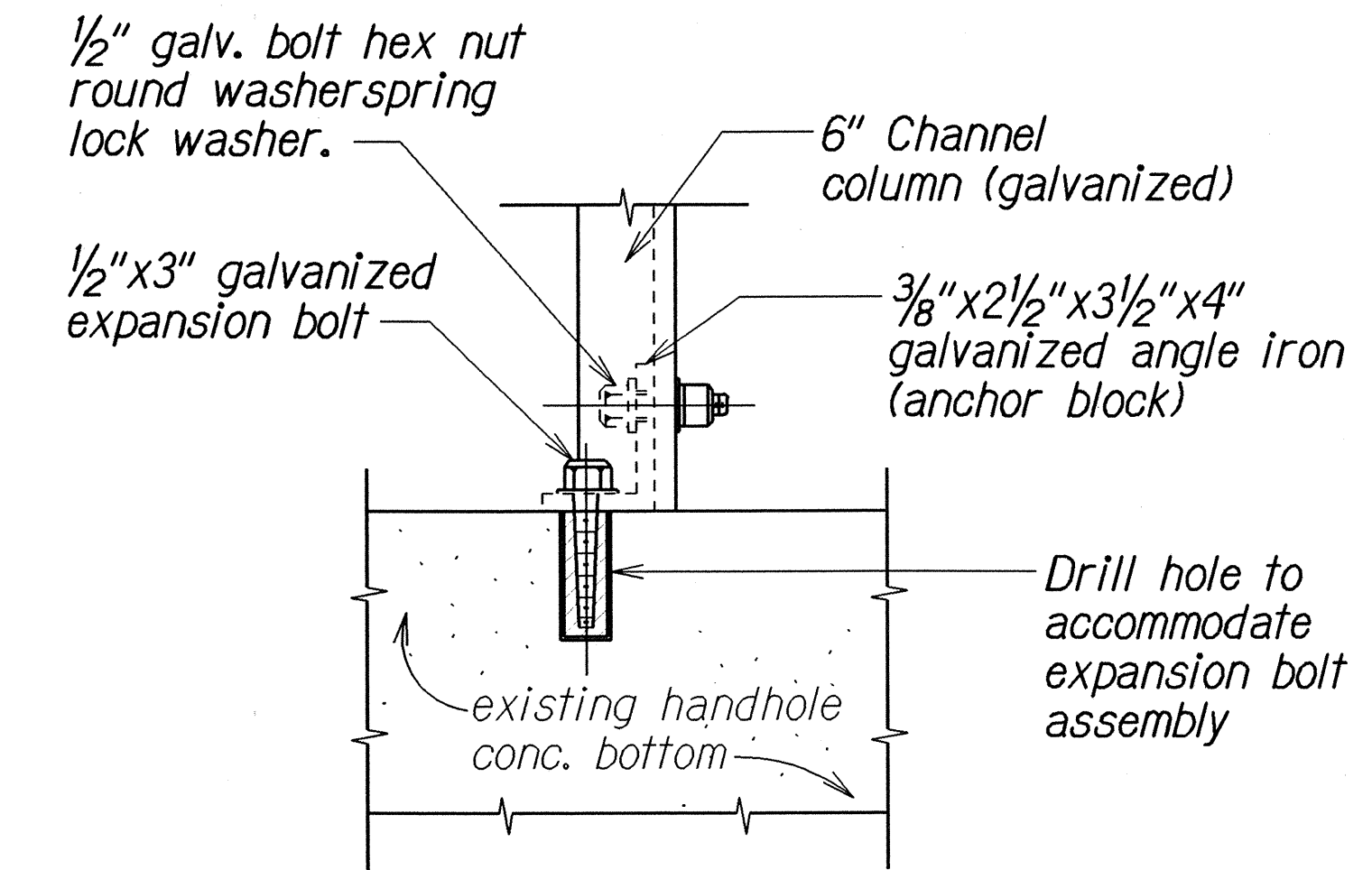
FRONT VIEW SIDE VIEW  
ANCHOR IRON CHANNEL CONNECTOR  
Scale: 1/2" = 1"



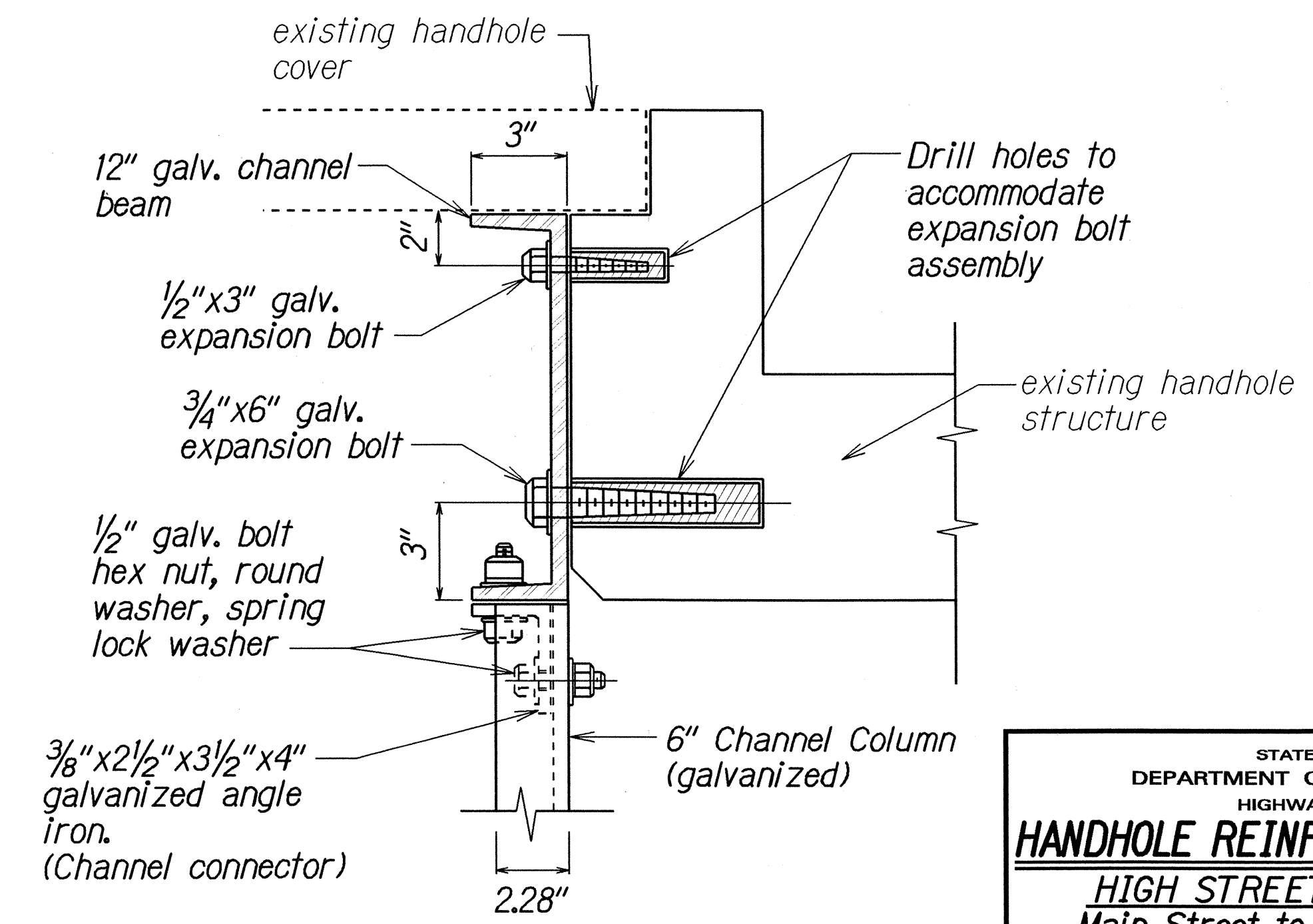
SECTION "B-B"  
Scale: 3/4" = 1'-0"

GENERAL NOTES:

1. Apply one coat of rust preventive primer paint on steel. Reinforcement structure components prior to assembling if necessary.
2. Do necessary primer paint touch-up at all exposed surfaces of steel structure after assembly and installation in the hand hole.
3. All work shall be inspected and approved by the Maui Electric Company underground field inspector.
4. The Contractor shall obtain the necessary Highway Construction permits from the State Highways Division and or City and County of Maui.



① CHANNEL COLUMN ANCHOR DETAIL  
Scale: 1/4" = 1"



② CHANNEL MOUNTING AND ASSEMBLY DETAIL  
Scale: 3" = 1'-0"

STATE OF HAWAII  
DEPARTMENT OF TRANSPORTATION  
HIGHWAYS DIVISION

**HANDHOLE REINFORCEMENT DETAILS**  
HIGH STREET RESURFACING  
Main Street to Keanu Street and  
MAIN STREET RESURFACING  
High Street to Central Avenue  
Federal Aid Project No. STP-NH-0900(62)R  
Scale: As Shown      Date: October, 2002

DESIGNED BY	DATE
TRACED BY	4/02
NOTED BY	
QUANTITIES BY	
CHECKED BY	